



The use of administrative data for weighting (education level) & evaluation of survey data quality

16th Workshop on LFS Survey Methodology, Lisbon 2023

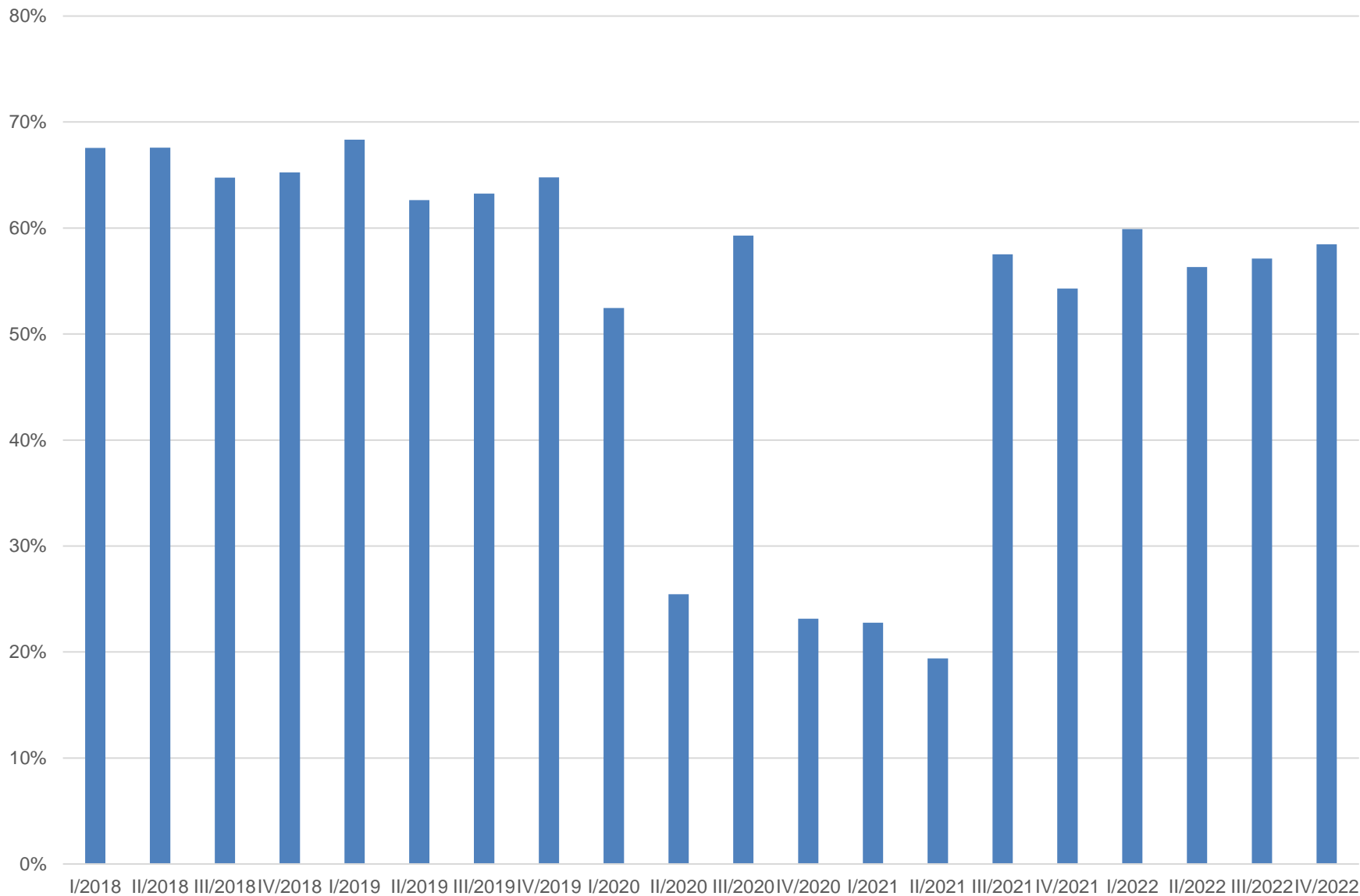
Katja.Rutar@gov.si

Contents

- Response rates development
- Unemployment estimates development
- Coherence of education level data
- Defining education level weighting classes
- Comparison of results
- Coherence of comparable data
- Issues for discussion

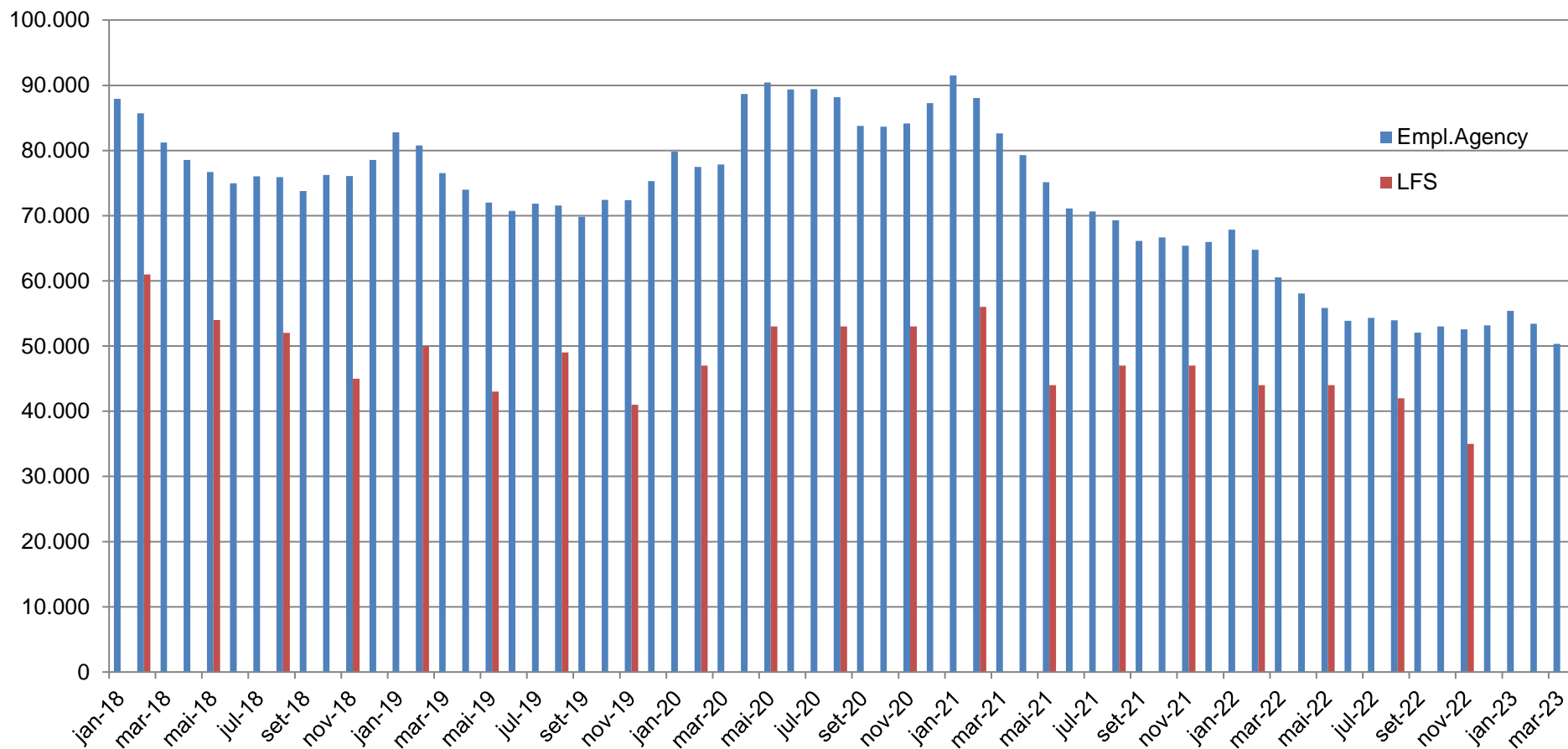


Response Rates, 1 wave, Face-to-Face*, 2018 - 2022

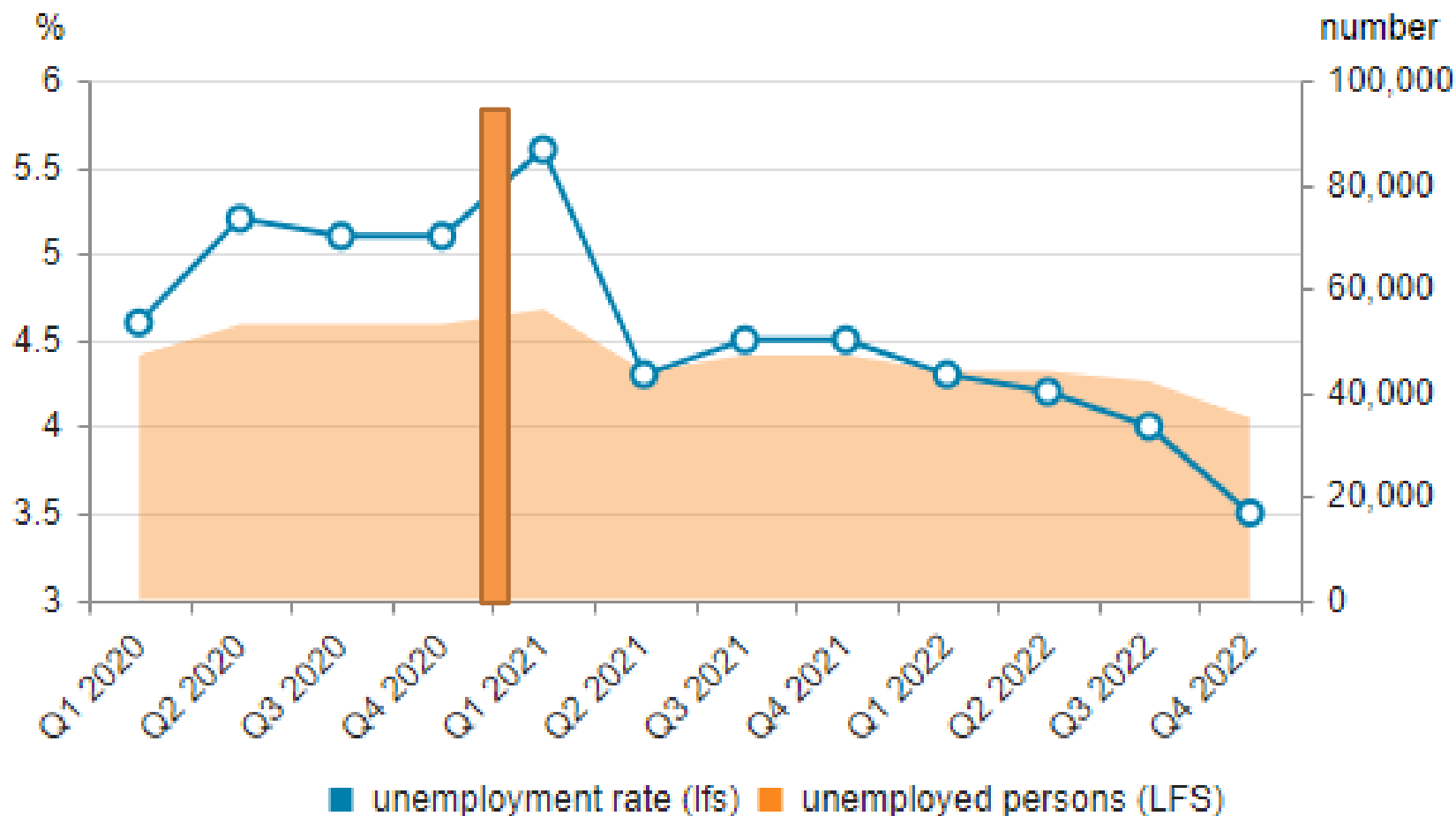




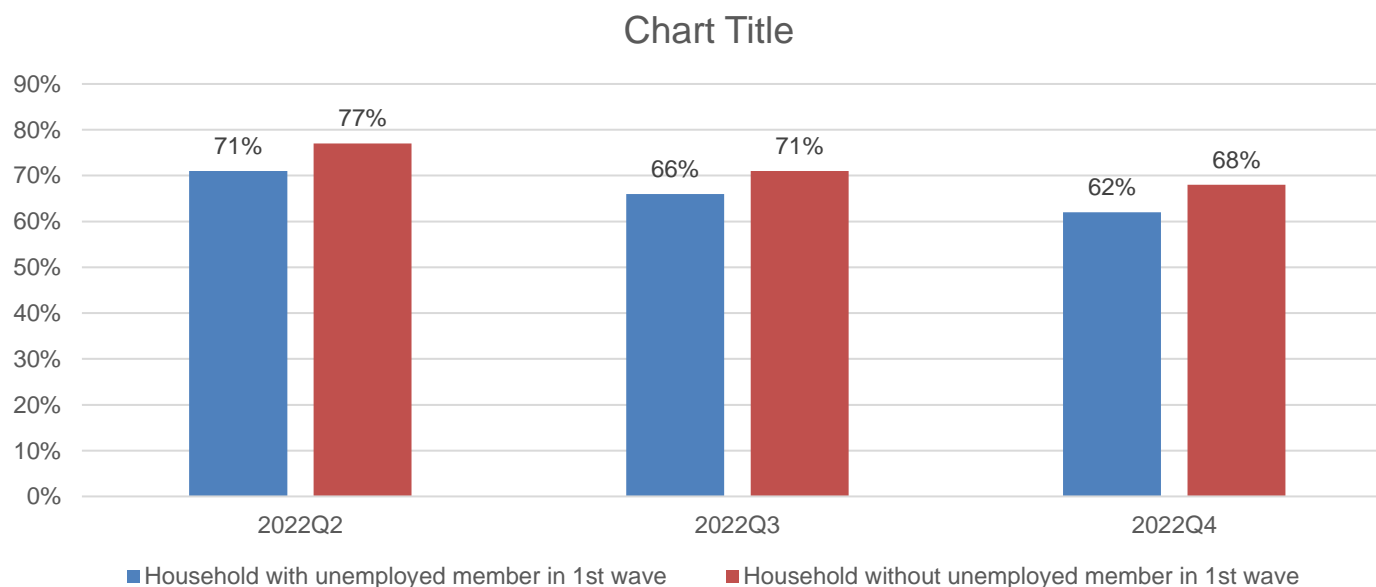
Number of unemployed persons



LFS vs. Census Unemployment Estimates (1.1.2021 – 93.000 / 9,2 %)



‘Informative’ Response Rates in 2nd wave (average 71%)



Attrition is higher in households with unemployed members.



Education level for respondents from survey and administrative data

		Administrative source, 1. 1. 2022				
		Primary Education	Vocational Education	Secondary Education	Tertiary Education	
	Primary Education	2.519	292	71	9	2.891
LFS	Vocational Education	411	2.318	592	27	3.348
2022Q4	Secondary Education	388	711	4.053	151	5.303
	Tertiary Education	28	28	354	4.537	4.947
		3.346	3.349	5.070	4.724	16.489

81% in the same education level group.



Educatin level estimates (LFS target population)

	Demographic estimates 1. 1. 2022	LFS 2022
Primary Education	21,3%	17,1%
Vocational Education	22,5%	19,5%
Secondary Education	30,3%	31,9%
Tertiary Education	25,9%	31,5%

LFS data overestimate group of tertially educated population.

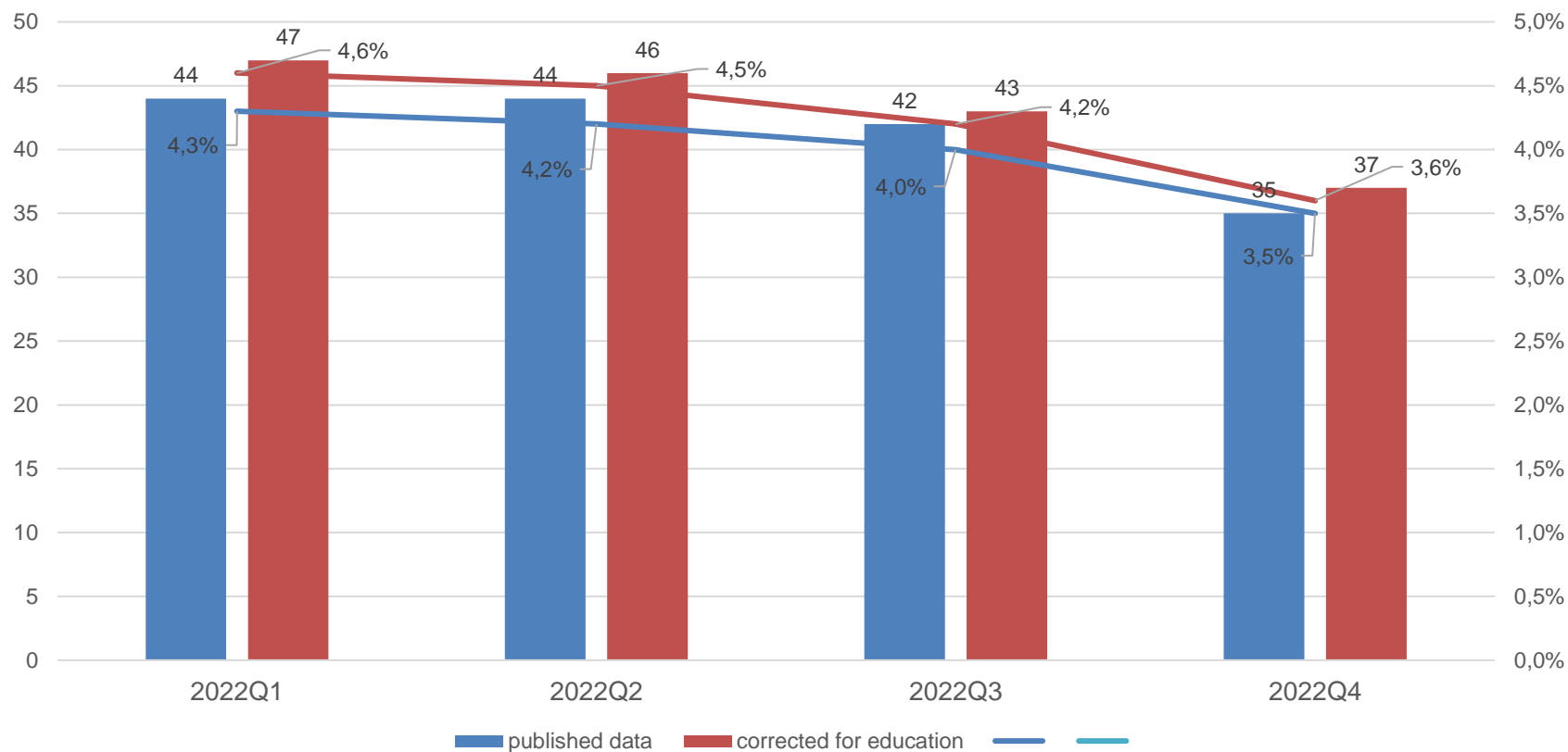
Education level groups for weighting

1.01.2022	M E N			
	15-29	30-64	65-89	
Primary Education	32,5%	11,9%	23,6%	18,1%
Vocational Education	16,9%	30,7%	35,6%	29,2%
Secondary Education	36,8%	32,9%	23,5%	31,6%
Tertiary Education	13,9%	24,6%	17,3%	21,1%
	1	1	1	1

	W O M E N			
	15-29	30-64	65-89	
Primary Education	31,4%	13,4%	45,5%	25,0%
Vocational Education	6,9%	16,0%	19,8%	15,5%
Secondary Education	37,7%	30,5%	21,4%	29,2%
Tertiary Education	24,1%	40,2%	13,3%	30,3%
	1	1	1	1

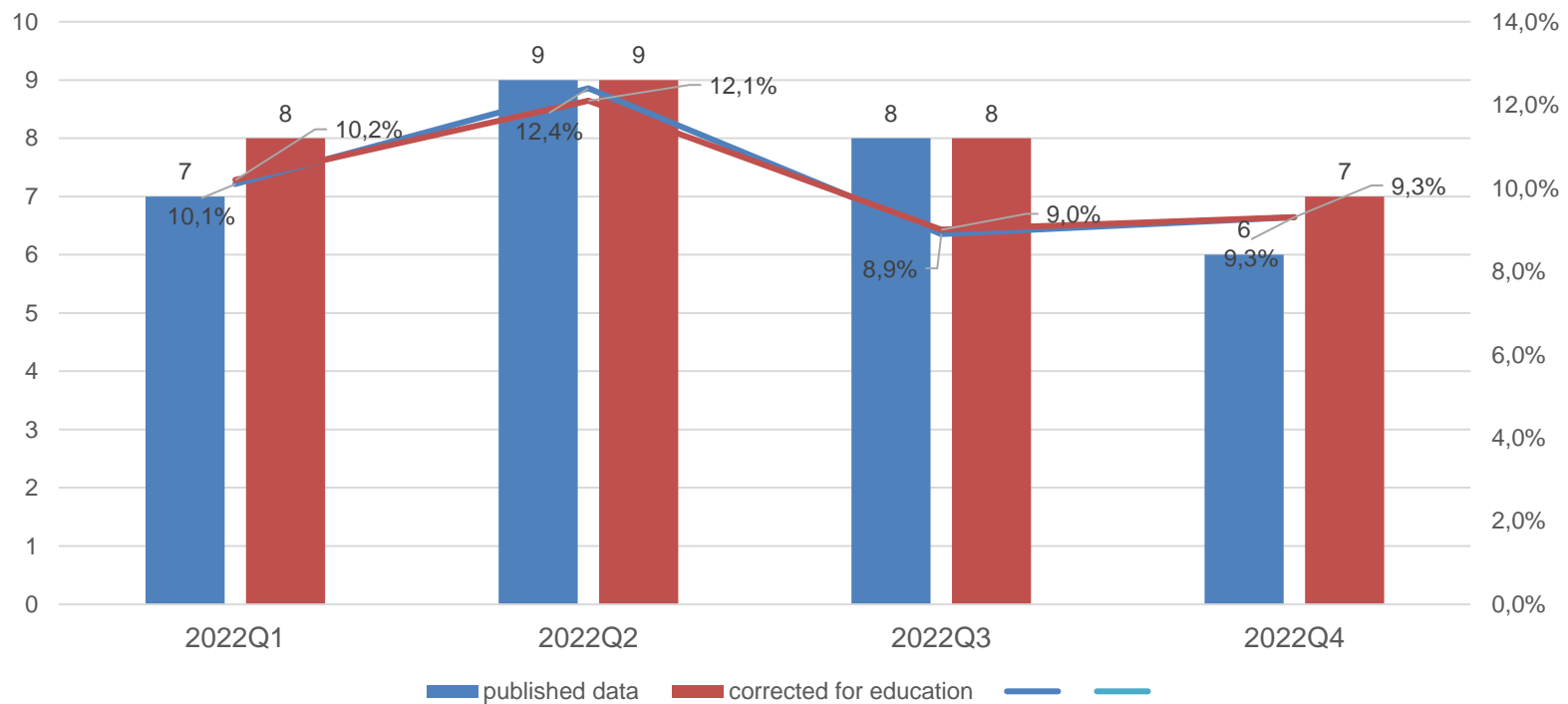


Unemployed – Number & Rate





Young Unemployed – Number & Rate



Are you registered at Employment Agency?

		Administrative Source		
		- Reference Week		
		YES	NO	
LFS	YES	259	134	393
2022Q4	NO	131	11.712	11.843
		390	11.846	12.236

From 2023 on we use administrative data in LFS.

Number of household members

		Population Census 1.1.2021						
		One member	Two members	Three members	Four members	Five + members		
LFS	One member	427	190	141	101	88	947	24%
2021Q3	Two members	77	697	201	113	155	1243	31%
	Three members	31	85	431	110	85	742	19%
1st wave	Four members	12	13	88	467	124	704	18%
	Five or more members	9	5	16	35	247	312	8%
		556	990	877	826	699	3.948	
		14%	25%	22%	21%	18%		

57% of households have same number of members.

Issues for discussion

- Do you have some minimum threshold for response-rate under which you don't publish results?
- Consistency of register based census (demographic) data and LFS data



Thank you for your attention!

- ?
 - ?
 - ?
- ?
 - ?
 - » ?
 - + ?
 - » ?