

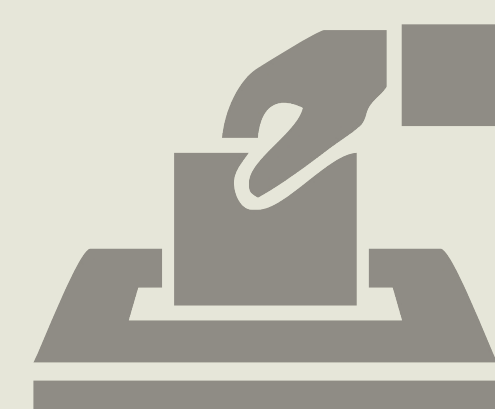
Guiding principles of Social Economy



People First



Free membership



Democratic control



Conciliation of Interests



Solidarity



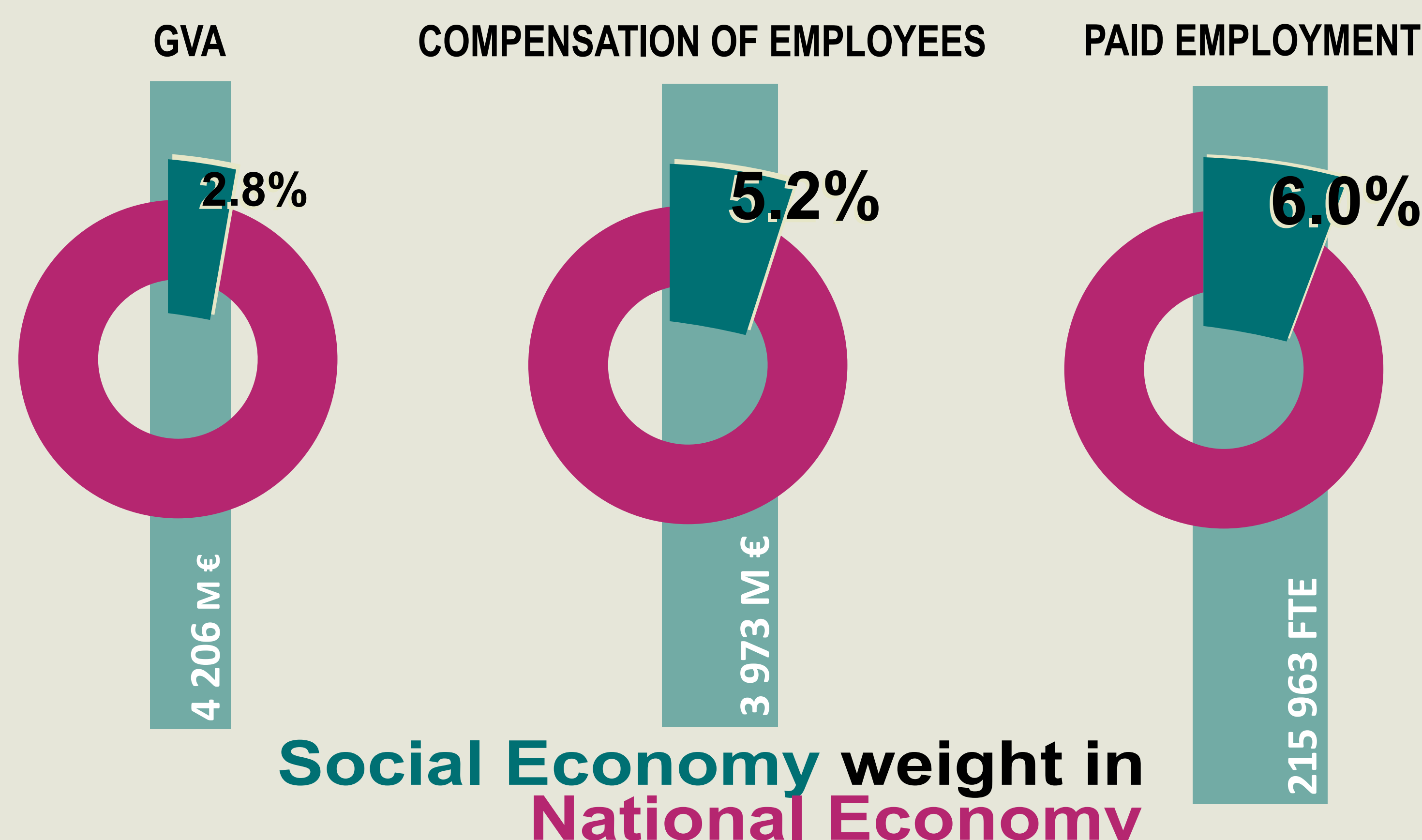
Autonomous management



Surplus linked to SE

MAIN INDICATORS

No OF UNITS = 61 268



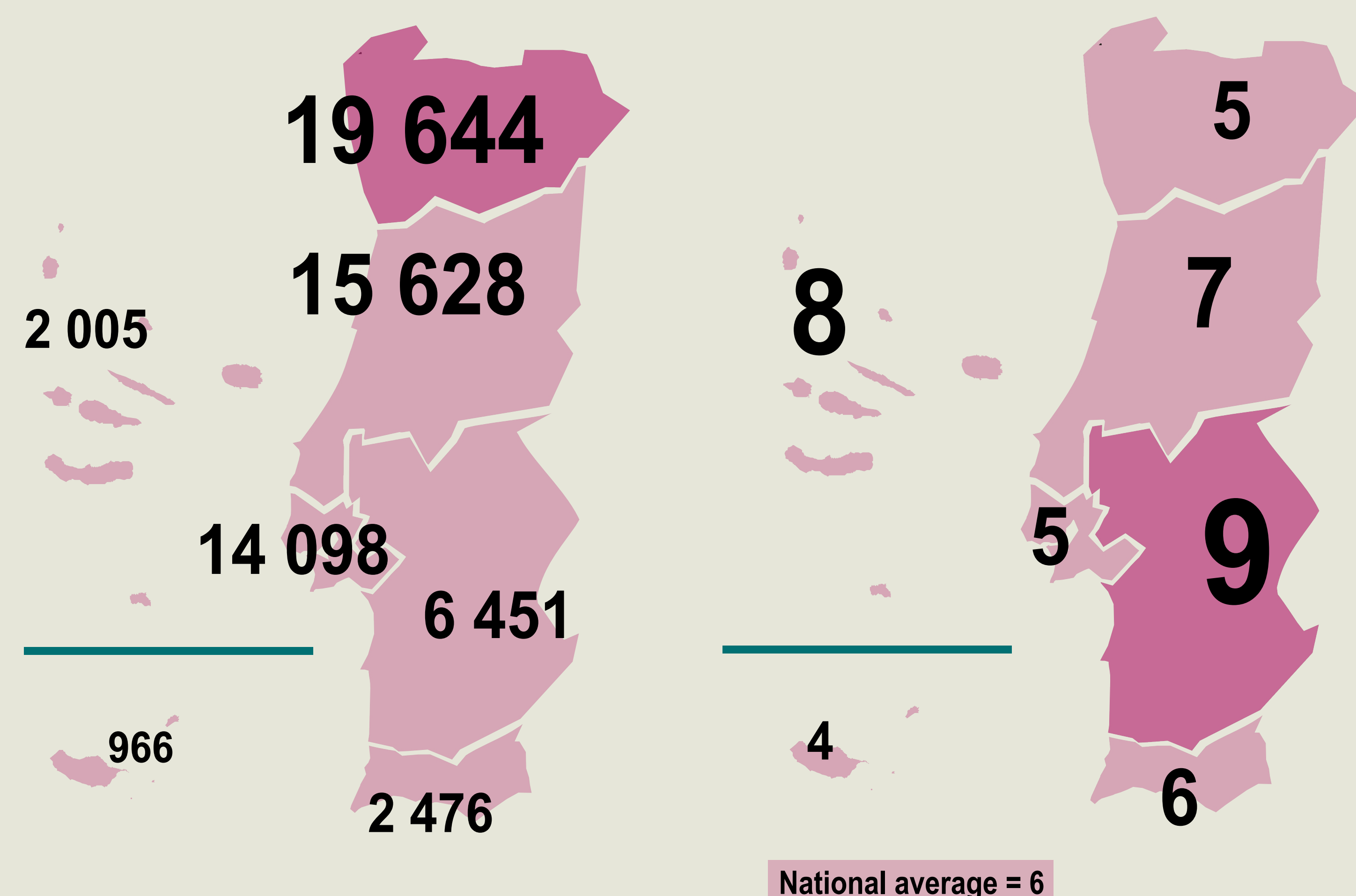
GROUPS OF ENTITIES

	Number of units	GVA (M €)	Paid employment (FTE)
Cooperatives	2 117	490	24 316
Mutual associations	111	352	4 896
Holy houses of mercy	389	541	35 469
Foundations	578	251	10 871
Associations with altruistic goals	57 196	2 566	140 050
Community and self management subsectors	877	6	361
TOTAL OF SE	61 268	4 206	215 963

TERRITORIAL ANALYSIS (NUTS 2)

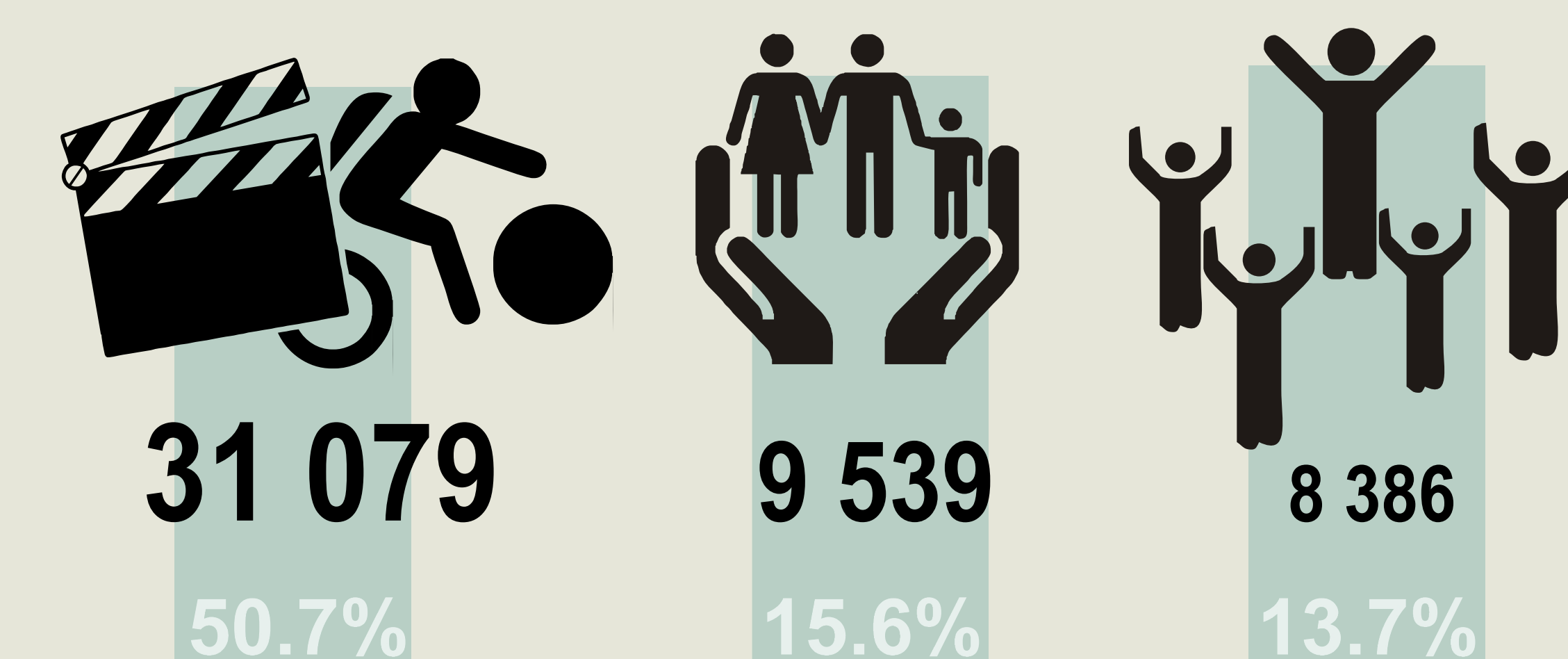
No OF UNITS

No OF UNITS / 1000 residents

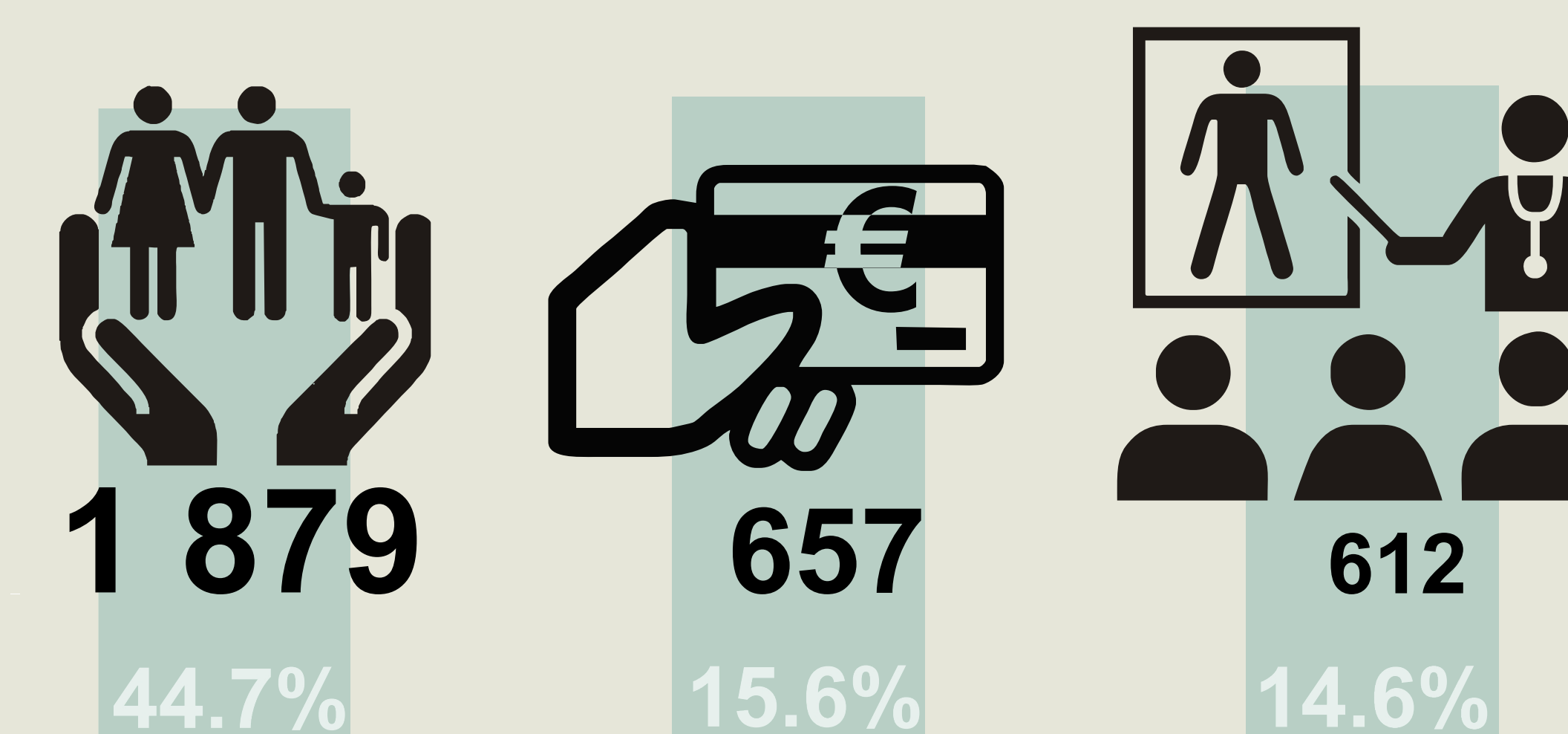


MAIN ACTIVITIES

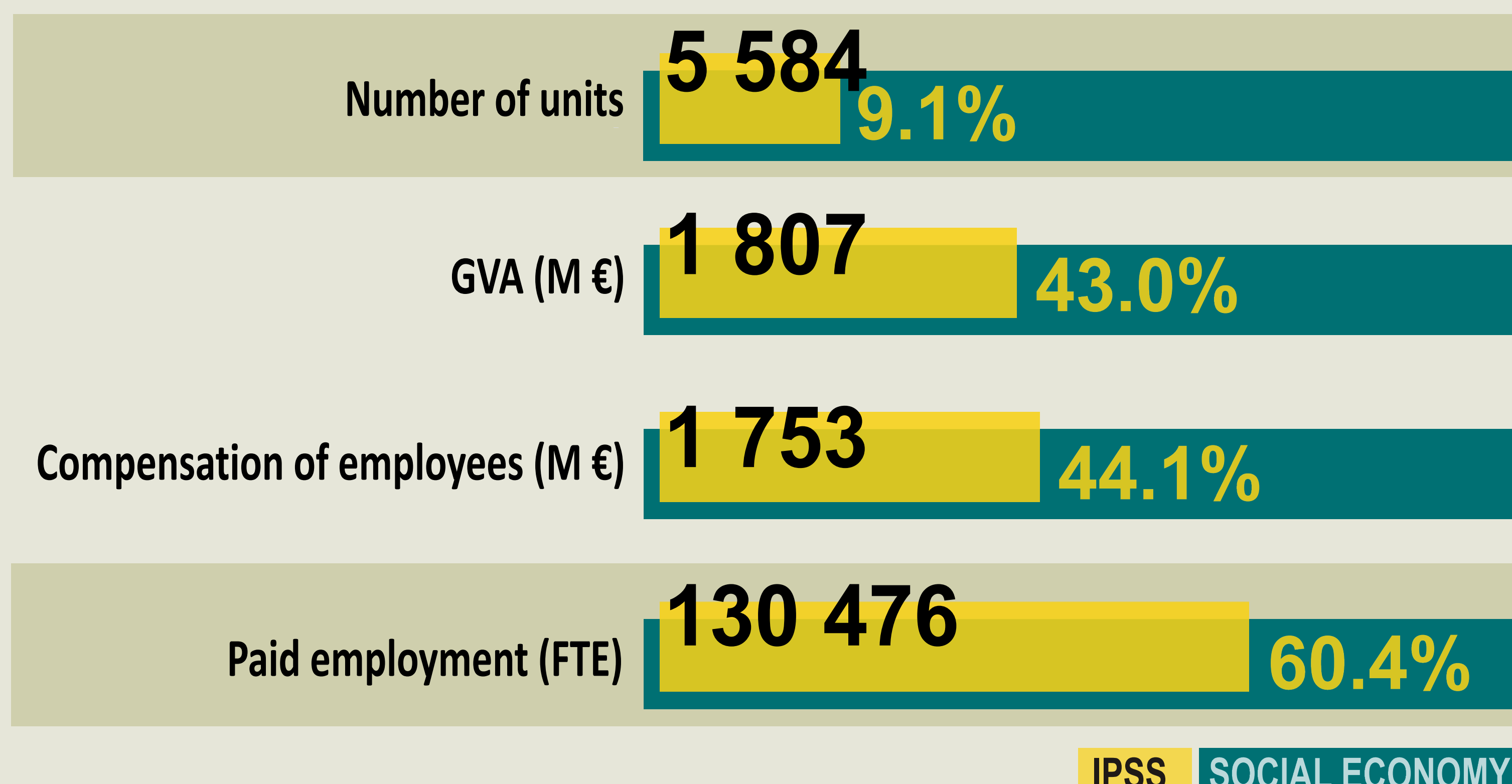
No OF UNITS



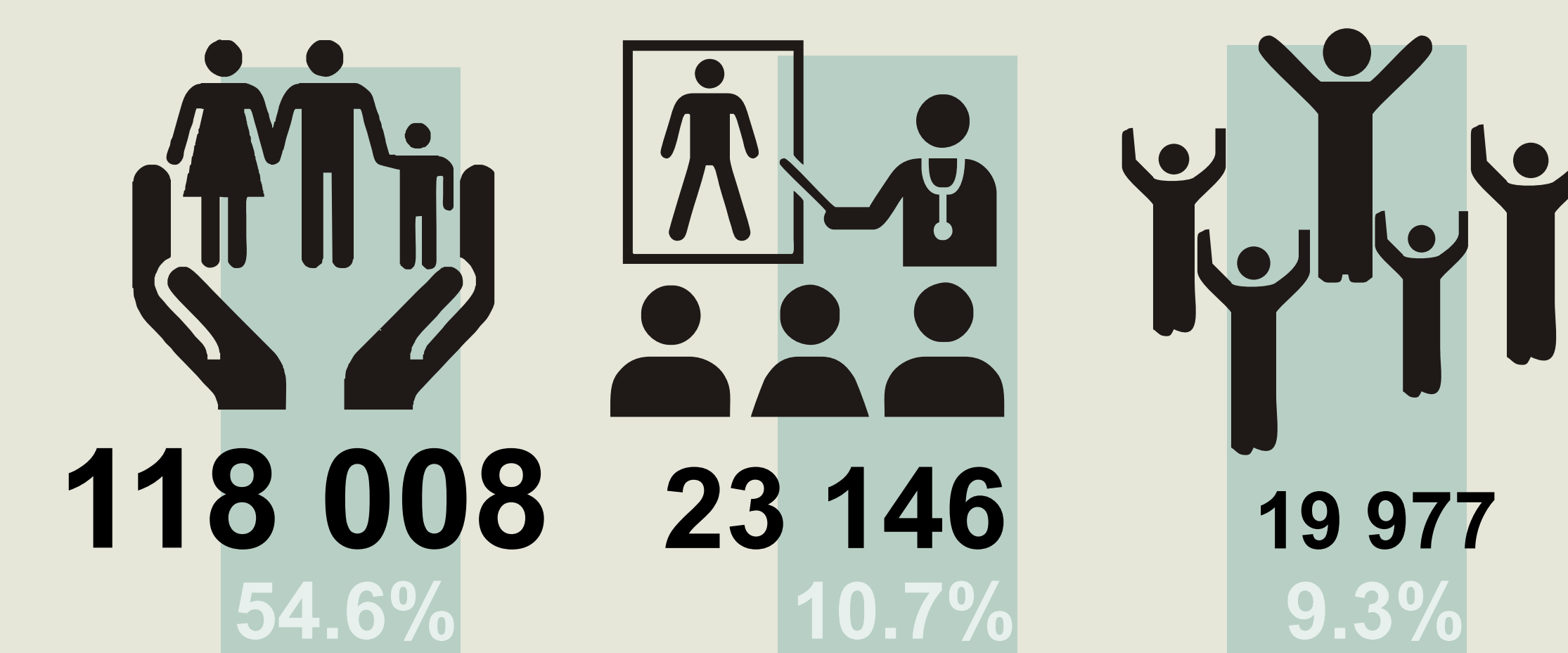
GVA (M €)



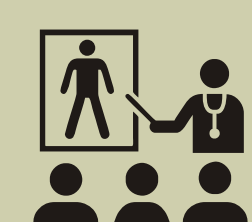
IPSS IN SOCIAL ECONOMY



PAID EMPLOYMENT (FTE)



Financial Activities



Education and Research



Social action and Social security



Culture, Sports and Recreation



Cults and Congregations