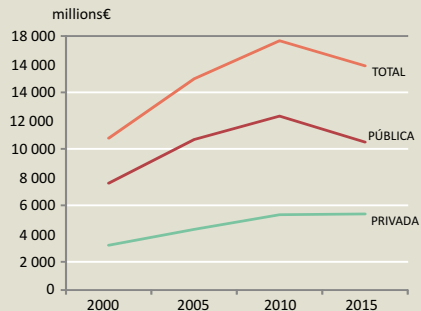


CURRENT HEALTH EXPENDITURE IN PORTUGAL

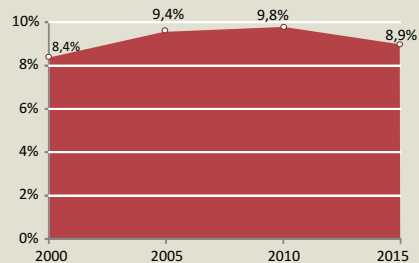
How much do we spend?

CURRENT HEALTHCARE EXPENDITURE



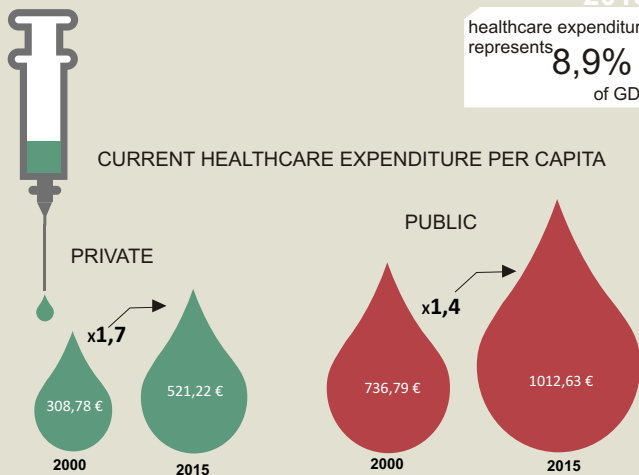
2015
1 534 €
per person
+2,0%
(Compared to last year)

CURRENT HEALTHCARE EXPENDITURE (% GDP)



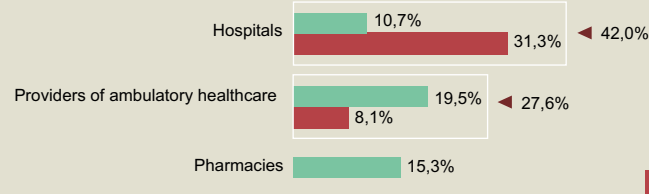
2015
healthcare expenditure
represents
8,9%
of GDP

CURRENT HEALTHCARE EXPENDITURE PER CAPITA

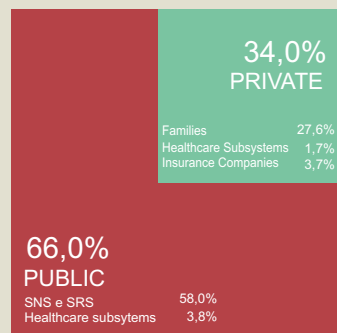


Where do we spend more?

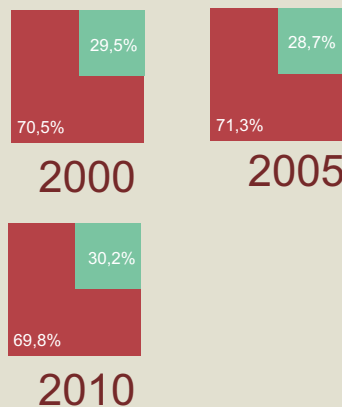
2014



Public and private current healthcare expenditure

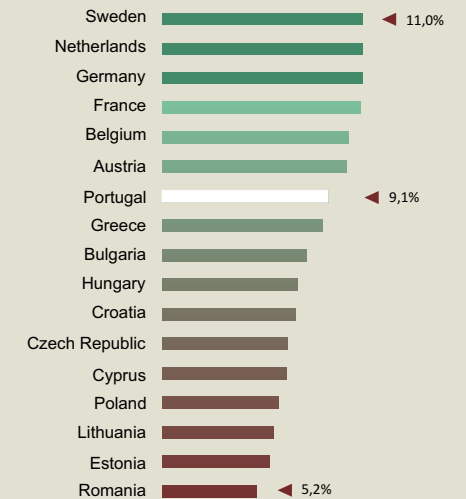


2015



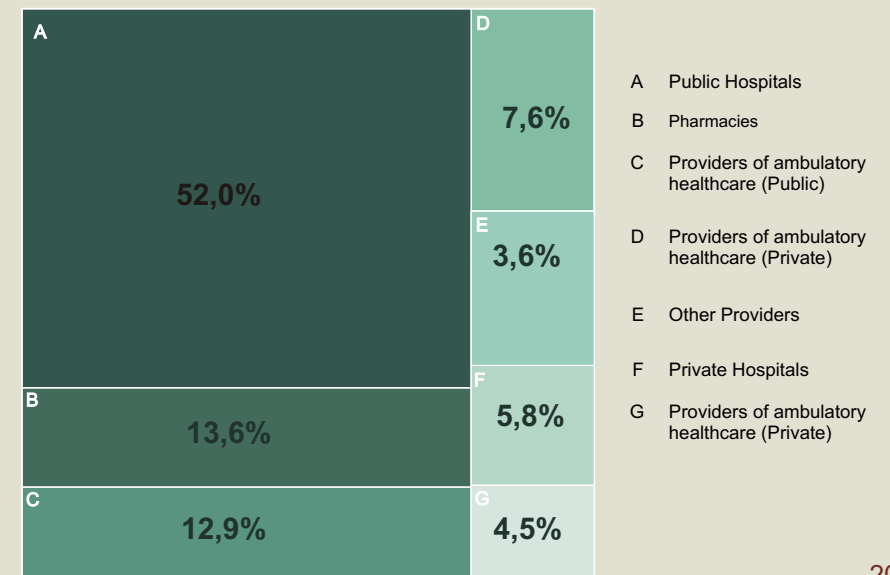
Which countries spend more?

CURRENT HEALTHCARE EXPENDITURE (% GDP)



2013

Current Expenditure of National and Regional Health Services by provider



2014