



09 July, 2010

## CHARACTERIZATION OF SOCIAL HOUSING IN PORTUGAL 2009

### **Social housing stock distributed by 246 municipalities, consisting of approximately 97 thousands dwellings and 22 thousands buildings**

In 2009, there were around 919 social housing dwellings by 100 000 inhabitants (national average) which were owned by municipalities. The social housing stock is distributed by 246 municipalities, consisting of approximately 97 thousands dwellings and 22 thousands buildings.

The cities of Lisbon and Porto held respectively 22 315 and 12 682 dwellings, summing up together 36% of the total for Portugal.

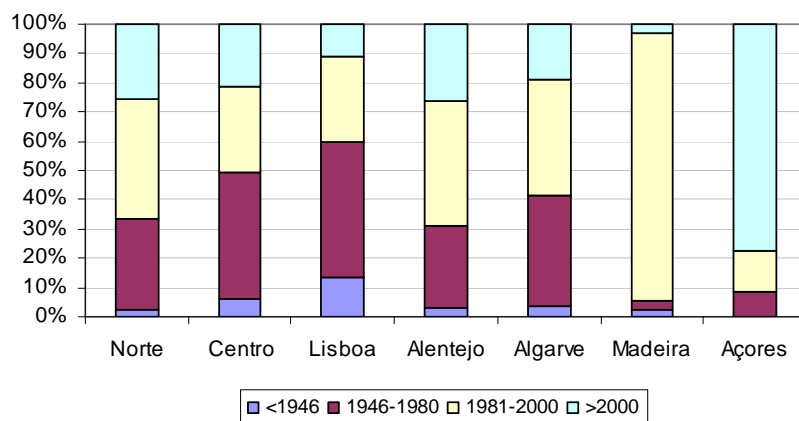
During 2009, the Portuguese municipalities performed conservation work on 2252 buildings (10.2% of total) and proceeded to the rehabilitation of 6636 dwellings (6.8% of total).

In 2009, the municipal social housing generated an average revenue per dwelling of 706 euro, from collected rents and sold houses. By the other hand, the average expense (including fixed costs) reached 676 euro per dwelling.

### **Number of social housing buildings and dwellings, by NUTS II - 2009**

Region (NUTS II)	Total number of buildings	Total number of dwellings	Number of dwellings by building
Norte	4616	37643	8,2
Centro	3203	6941	2,2
Lisboa	8976	41604	4,6
Alentejo	2600	4094	1,6
Algarve	1338	3985	3,0
Região Autónoma da Madeira	92	1426	15,5
Região Autónoma dos Açores	1331	1392	1,0
<b>Total</b>	<b>22156</b>	<b>97085</b>	<b>4,4</b>

**Number of social housing buildings, by period of construction, by NUTS II - 2009**

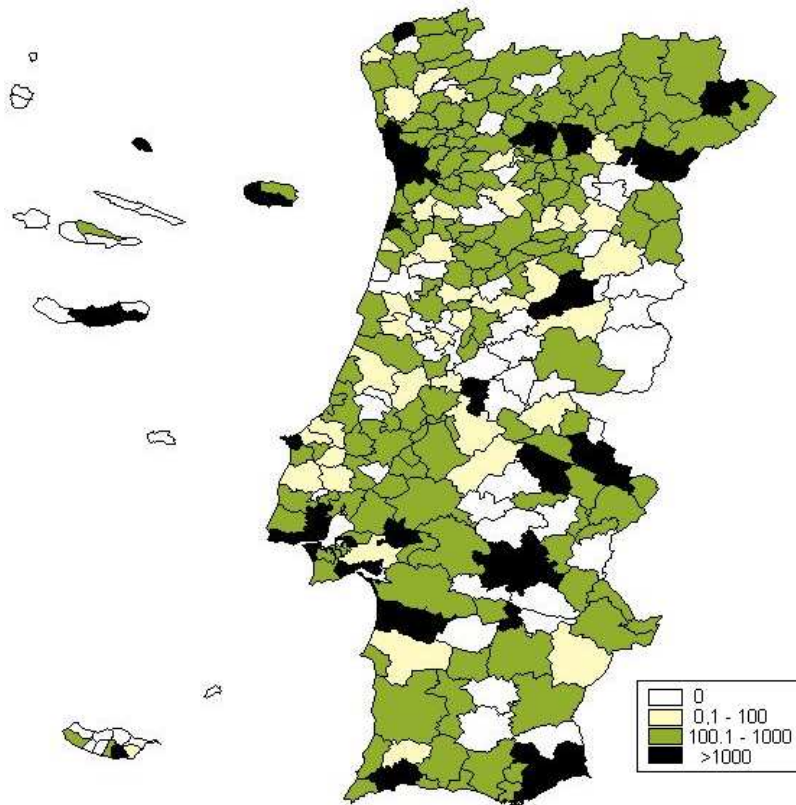


**Number of social housing dwellings by typology, by NUTS II - 2009**

NUTSII	Total number of dwellings	Number of dwellings by typology		
		T0 and T1	T2 and T3	T4 or more
Norte	37643	3762	30294	3587
Centro	6941	590	5892	459
Lisboa	41604	5791	32502	3311
Alentejo	4094	453	3281	360
Algarve	3985	523	3185	277
Região Autónoma da Madeira	1426	166	1206	54
Região Autónoma dos Açores	1392	125	1033	234
<b>Total</b>	<b>97085</b>	<b>11410</b>	<b>77393</b>	<b>8282</b>

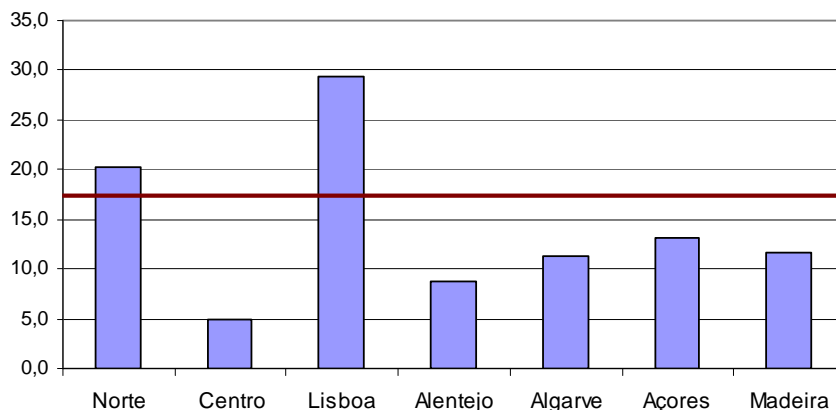


## Number of municipal social housing dwellings per 100 thousands inhabitants - 2009 <sup>1</sup>



<sup>1</sup> Annual estimates of resident population - 2009

**Number of social housing dwellings per 1 000 residential dwellings, by NUTS II -2009 <sup>2</sup>**



**Number and proportion of social housing buildings and dwellings subject to conservation and rehabilitation works, by NUTS II - 2009**

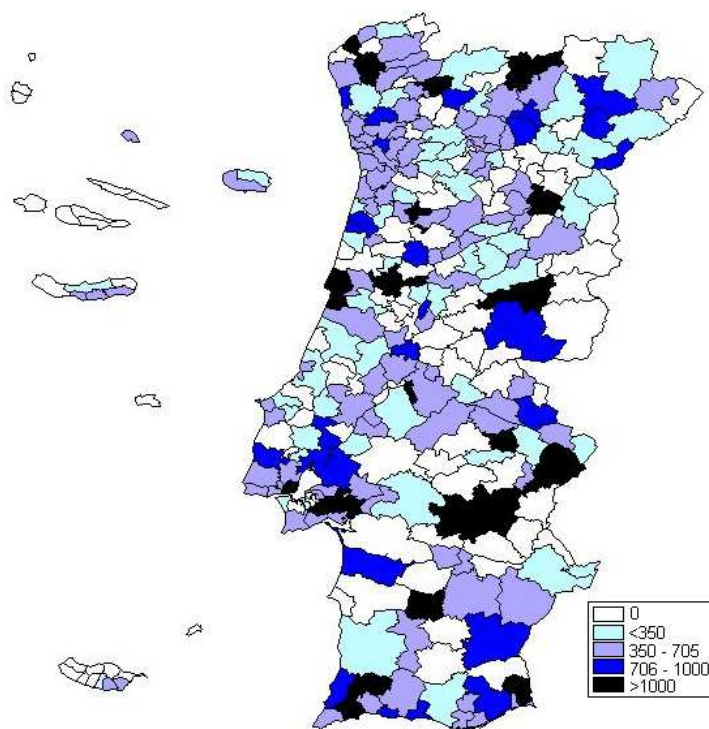
Region (NUTS II)	Buildings that suffered conservation work in 2009		Dwellings subject to rehabilitation in 2009	
	Nº	%	Nº	%
Norte	425	9,2	3227	8,6
Centro	481	15,0	408	5,9
Lisboa	453	5,0	1558	3,7
Alentejo	497	19,1	716	17,5
Algarve	98	7,3	399	10,0
Região Autónoma da Madeira	20	21,7	244	17,1
Região Autónoma dos Açores	278	20,9	84	6,0
<b>Total</b>	<b>2252</b>	<b>10,2</b>	<b>6636</b>	<b>6,8</b>

<sup>2</sup> Estimates of housing stock (number of residential dwellings) - 2009  
Characterization Of Social Housing In Portugal 2009

### Revenue and expenditures with social housing dwellings, by NUTS II - 2009

Region (NUTS II)	Collected Revenue		Expenditure in works	Value of fixed costs
	From rents	From sales		
Norte	19631,5	1594,5	30552,2	3427,8
Centro	4007,6	1904,2	5503,9	1579,3
Lisboa	27358,4	5950,5	13647,8	5035,3
Alentejo	2406,4	752,0	2026,1	407,0
Algarve	2079,2	1497,4	1558,0	476,2
Região Autónoma da Madeira	826,1	52,0	658,1	148,5

### Average revenue per municipal social housing dwelling - 2009 (€/dwelling)



## Average expenditure per municipal social housing dwelling - 2009 (€/dwelling)

