



13 March 2026  
VITAL STATISTICS – MONTHLY DATA  
February 2026

### MORTALITY DECREASED 1.0% COMPARED TO THE SAME MONTH OF 2025.

In February 2026, there were 10,094 deaths, 3,543 less (-26,0%) than in the previous month. Compared to the same month of 2025, there was a decrease of 100 deaths (-1.0%). The number of deaths of children under 1 year of age was 13, 14 less than in February 2025.

In January 2026, 7,346 live births were registered, 139 less (-0.02%) compared to December 2025, but 240 more (+3.4%) compared to the same month of 2025.

In January 2026, the natural balance was -6,243<sup>1</sup>, having worsened in relation to the same month of 2025, when it reached -5,145.

In January 2026, 1,662 marriages were celebrated, 604 less (-26,7%) than in December 2025 and 50 less (-2,9%) than in January 2025.

---

In this press release, Statistics Portugal provides **preliminary data** on the number of deaths per month until February 2026<sup>2</sup>, and the number of live births and marriages per month until January 2026, that occurred in national territory. The indicators published and analyzed are available on the Official Statistics Portal ([www.ine.pt](http://www.ine.pt)), with geographical breakdowns NUTS 2 and NUTS 3. The hyperlinks to these statistics can be found in the Excel file published together with this Press Release. The information is obtained from the Sistema Integrado do Registo e Identificação Civil (SIRIC) until March 6<sup>th</sup>, 2026.

---

<sup>1</sup> The natural balance is calculated based on the difference between the number of live births of mothers residing in Portugal and the number of deaths of residents in Portugal.

<sup>2</sup> After the release of mortality data for 2022 and considering the decrease of the impact of deaths due to COVID-19 on mortality, the analysis regarding the number of deaths per week was suspended. However, the release of indicators regarding the number of weekly deaths, by NUTS 3 breakdown, until the 9<sup>th</sup> week of 2026, and daily deaths, by NUTS 2 breakdown, until March 1<sup>st</sup>, 2026, is assured.

## 1. IN FEBRUARY 2026, THE NUMBER OF DEATHS DECREASED 1,0% COMPARED TO THE SAME MONTH OF 2025

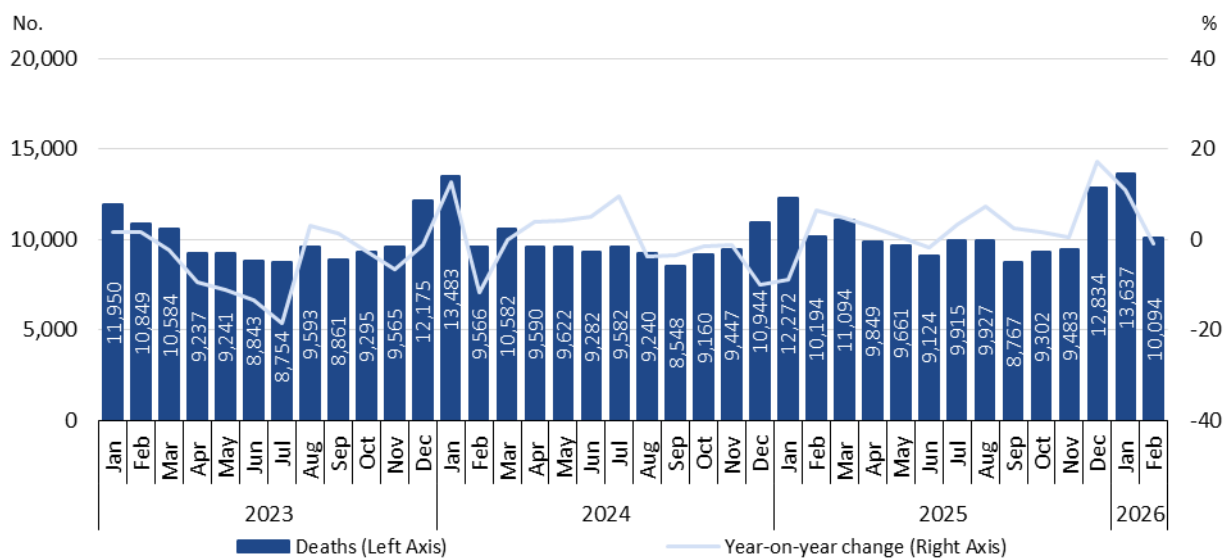
In February 2026, there were 10,094 deaths (of which 22 were from residents abroad), 3,543 less (-26.0%) than in the previous month. Compared to the same month of 2025, there was a decrease of 100 deaths (-1.0%).

In that month, the number of deaths of children under 1 year old was 13 (all of them born to mothers residing in Portugal), eight less than in the previous month and 14 less than in February 2025.

In the first two months of the year, there were 23,731 deaths in national territory (1,265 more than in same period of 2025), of which 34 were deaths of children under 1 year of age (40 in 2025).

Figure 1

DEATHS AND YEAR-ON-YEAR CHANGE, JANUARY 2023 TO FEBRUARY 2026

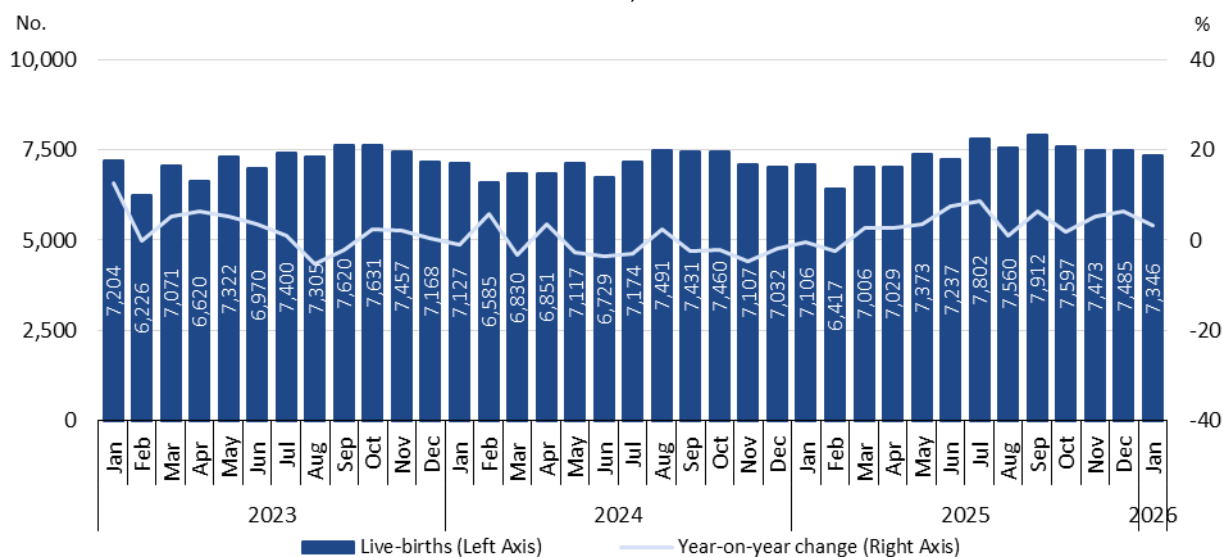


## 2. IN JANUARY 2026, THE NUMBER OF LIVE BIRTHS INCREASED 3.4% COMPARED TO JANUARY 2025

In January 2026, there were 7,346 live births (of which 13 were born to mothers residing abroad), corresponding to a decrease of 0.02% (139 less) compared to December 2025, but to an increase of 3.4% (240 more) compared to the same month of 2025.

Figure 2

LIVE BIRTHS AND YEAR-ON-YEAR CHANGE, JANUARY 2023 TO JANUARY 2026

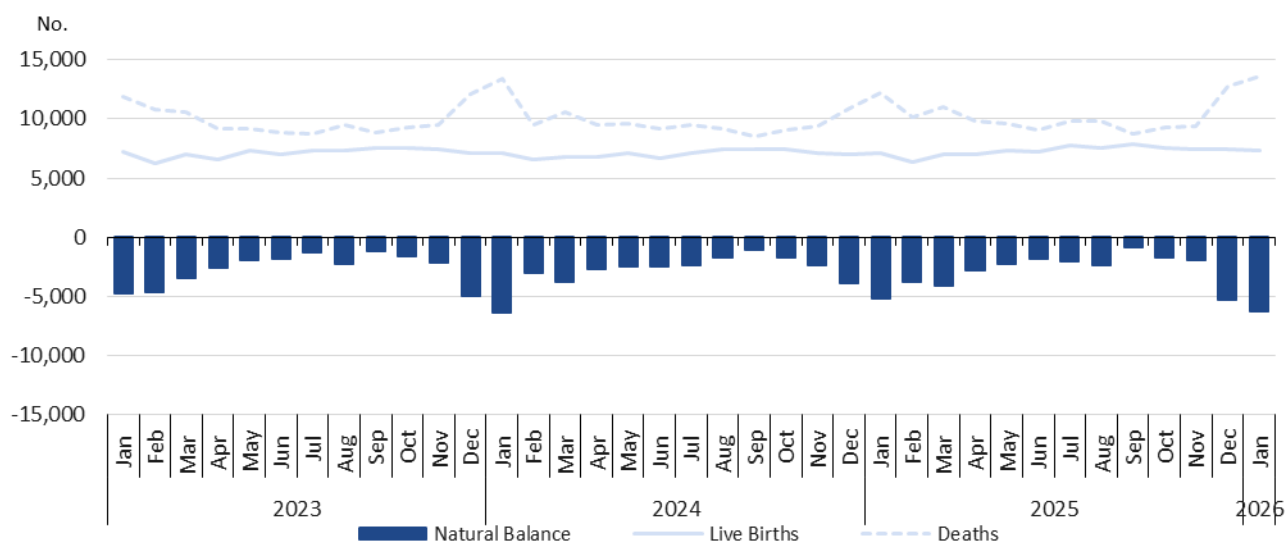


### 3. NATURAL BALANCE OF -6,243 IN JANUARY 2026

In January 2026, the natural balance registered the value of -6,243, having worsened compared to the figure of December 2025 (-5,330), and compared to the same month of 2025 (-5,145).

Figure 3

LIVE BIRTHS, DEATHS, AND NATURAL BALANCE, PORTUGAL, JANUARY 2023 TO JANUARY 2026



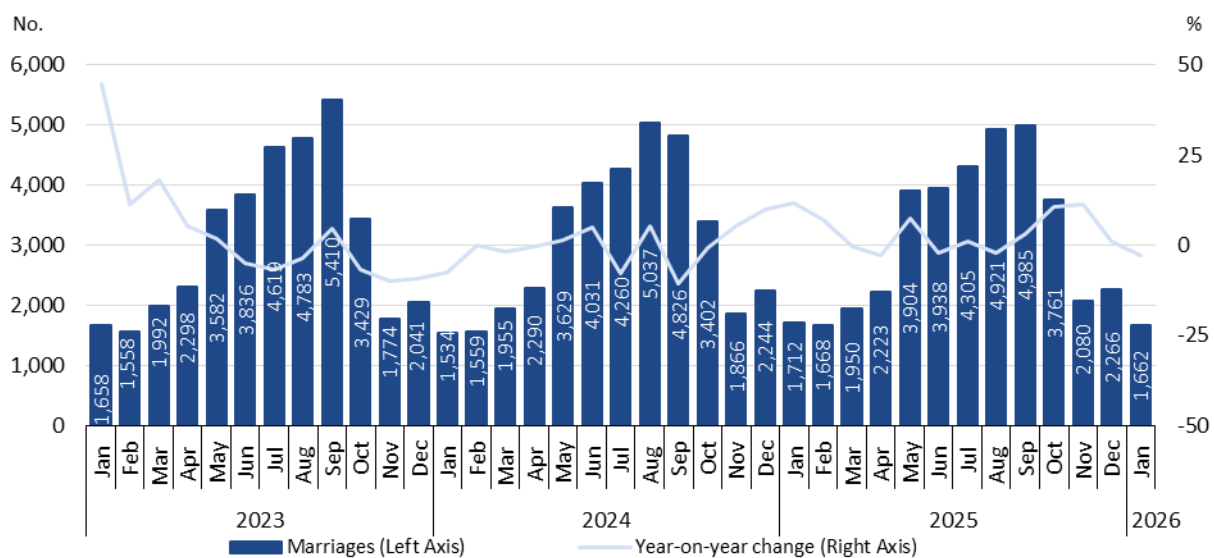
**Note:** The natural balance is calculated based on the number of live births of mothers residing in Portugal and the number of deaths of residents in Portugal.

#### 4. IN JANUARY 2026, THE NUMBER OF CELEBRATED MARRIAGES INCREASED 2.9% COMPARED TO JANUARY 2025

In January 2026, 1,662 marriages were celebrated, lower than the number registered in December 2025 (604 less; -26.7%) and that registered in January 2025 (50 less; -2.9%).

Figure 4

MARRIAGES AND YEAR-ON-YEAR CHANGE, JANUARY 2023 TO JANUARY 2026



## TECHNICAL NOTE

Statistics Portugal releases the **preliminary** monthly **numbers** of deaths, live births, and marriages based on the information registered in the Civil Register Offices until March 6<sup>th</sup>, 2026. Indicators on the preliminary monthly number of live births, deaths, and marriages, from January 2025 to January 2026, with geographical breakdowns up to NUTS 3, by NUTS 2024, as well as weekly number of deaths, until the 9<sup>th</sup> week of 2026, by NUTS 3 and daily number of deaths, until March 1<sup>st</sup>, 2026, by NUTS 2 are made available on the Statistics Portugal Website.

Data are obtained from statistical operations of direct and exhaustive collection on live births, deaths and marriages in Portuguese territory using facts that are subject to compulsory civil registration (birth and death) in the Sistema Integrado do Registo e Identificação Civil (SIRIC).

In addition to administrative information obtained from Civil Register Offices, Statistics Portugal collects an additional set of variables identified as statistically pertinent to the National Statistic System (NSS) and the European Statistical System (EES). Data is recorded and sent electronically, in compliance with the requirements set out by Statistics Portugal and laid down in liaison with the Instituto de Registos e Notariado (IRN) and the Instituto de Gestão Financeira e Equipamentos da Justiça (IGFEJ).

## CONCEPTS

**Marriage:** Contract signed by two persons that intend to start a family in full partnership and cohabitation according to legislation. Note: marriage can be held between persons from different or same sex.

**Live birth:** This is the complete expulsion or extraction from the mother's body, irrespective of the duration of the pregnancy, of a product of fertilization that, after separation, breathes or shows any other signs of life, such as a beating of the heart or umbilical cord or actual contraction of any muscle subject to voluntary movement, whether the umbilical cord has been severed and whether the placenta is retained.

**Death:** The permanent disappearance of vital functions.

**Natural balance:** The difference between the number of live births and the number of deaths during a given period.

**Year-on-year change:** The year-on-year change compares the level of a variable between the reference month and the same month of the previous year.

---

Next Press Release – 17 April 2026

---