

13 February 2026  
VITAL STATISTICS – MONTHLY DATA  
January 2026

### IN 2025, LIVE BIRTHS INCREASED 3.3% COMPARED TO 2024

In January 2026, there were 13,405 deaths, 614 more (+4.8%) than in the previous month. Compared to the same month of 2025, there was an increase of 1,133 deaths (+9.2%). The number of deaths of children under 1 year of age was 16, three more than in January 2025.

In total, in 2025, there were 122,332 deaths in Portugal, higher than in 2024 (119,027), representing an increase of 3,305 deaths (+2.8%).

In December 2025, 7,421 live births were registered, 25 less (-0.3%) compared to November 2025, but 389 more (+5.5%) compared to the same month of 2024. In total, in 2025, 87,732 live births were born in Portugal, 2,798 more (+3.3%) than in 2024 (84,934).

In December 2025, the natural balance was -5,352<sup>1</sup>, having worsened in relation to the same month of 2024, when it reached -3,878. In 2025, the natural balance was -34,244, having worsened compared to that recorded in 2024 (-33,732).

In December 2025, 2,264 marriages were celebrated, 185 more (+8.9%) than in November 2025 and 20 more (+0.9%) than in December 2024. In total, in 2025, 37,702 marriages were celebrated in Portugal, 1,069 (+2.9%) more than in 2024 (36,633).

---

In this press release, Statistics Portugal provides **preliminary data** on the number of deaths per month until January 2026<sup>2</sup>, and the number of live births and marriages per month until December 2025, that occurred in national territory. The indicators published and analyzed are available on the Official Statistics Portal ([www.ine.pt](http://www.ine.pt)), with geographical breakdowns NUTS 2 and NUTS 3. The hyperlinks to these statistics can be found in the Excel file published together with this Press Release. The information is obtained from the Sistema Integrado do Registo e Identificação Civil (SIRIC) until February 6<sup>th</sup>, 2026.

---

<sup>1</sup> The natural balance is calculated based on the difference between the number of live births of mothers residing in Portugal and the number of deaths of residents in Portugal.

<sup>2</sup> After the release of mortality data for 2022 and considering the decrease of the impact of deaths due to COVID-19 on mortality, the analysis regarding the number of deaths per week was suspended. However, the release of indicators regarding the number of weekly deaths, by NUTS 3 breakdown, until the 5<sup>th</sup> week of 2026, and daily deaths, by NUTS 2 breakdown, until February 1<sup>st</sup>, 2026, is assured.

## 1. IN JANUARY 2026, THE NUMBER OF DEATHS INCREASED 9,2% COMPARED TO THE SAME MONTH OF 2025

In January 2026, there were 13,405 deaths (of which 56 were from residents abroad), 614 more (+4.8%) than in the previous month. Compared to the same month of 2025, there was an increase of 1,133 deaths (+9.2%).

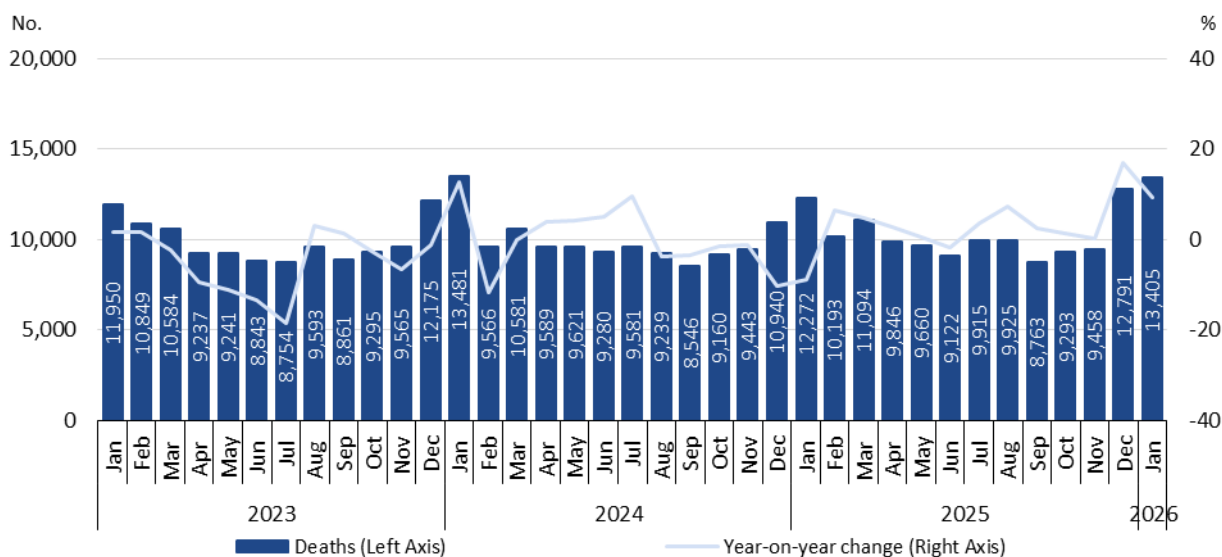
In that month, the number of deaths of children under 1 year old was 16 (all of them born to mothers residing in Portugal), seven less than in the previous month, but three more than in January 2025.

In 2025, there were 122,332 deaths in Portugal (including 620 deaths of residents abroad), 3,305 (+2.8%) more than in 2024.

Most deaths occurred at advanced ages: 87.0% of deaths corresponded to people aged 65 or over and more than half (61.1%) to people aged 80 or over. The number of deaths of children under 1 year old was 246 (including two deaths of children whose mothers lived abroad), which corresponded to a decrease of nine child deaths compared to 2024.

Figure 1

DEATHS AND YEAR-ON-YEAR CHANGE, JANUARY 2023 TO JANUARY 2026



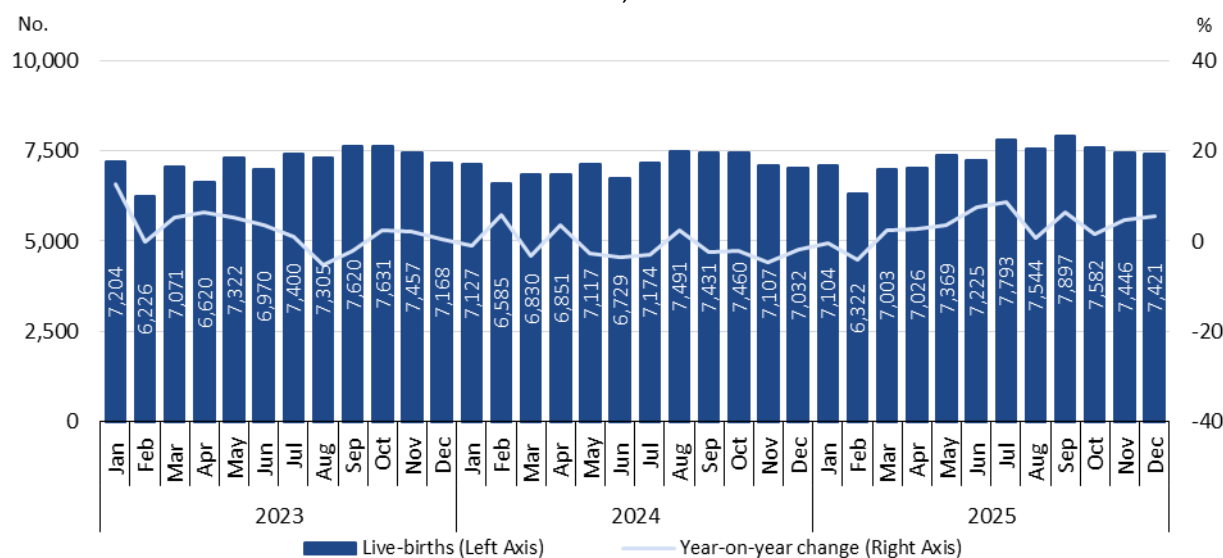
## 2. IN DECEMBER 2025, THE NUMBER OF LIVE BIRTHS INCREASED 5.5% COMPARED TO DECEMBER 2024

In December 2025, there were 7,421 live births (of which 28 were born to mothers residing abroad), corresponding to a decrease of 0.3% (25 less) compared to November 2025, but to an increase of 5.5% (389 more) compared to the same month of 2024.

In total, in 2025, there were 87,732 live births (of which 264 were born to mothers residing abroad), a figure higher than that recorded in 2024, by 2,798 (+3.3%). Throughout the year, the number of live births was always higher than that registered in 2024, except for the months of January (-0.3%) and February (-4.0%).

Figure 2

LIVE BIRTHS AND YEAR-ON-YEAR CHANGE, JANUARY 2023 TO DECEMBER 2025



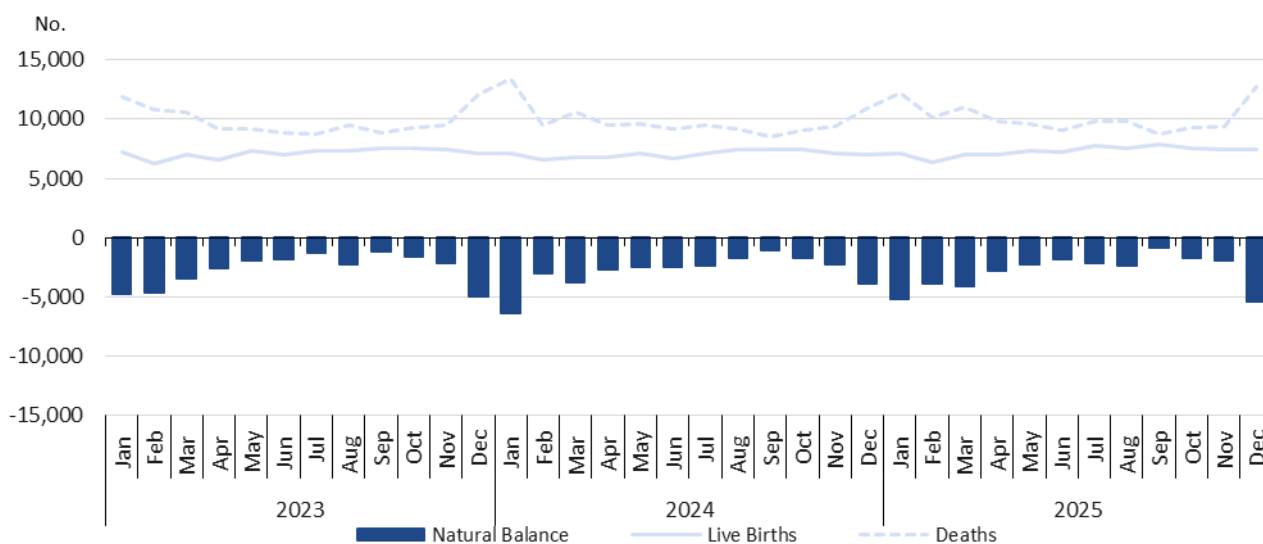
### 3. NATURAL BALANCE OF -5,352 IN DECEMBER 2025

In December 2025, the natural balance registered the value of -5,352, having worsened compared to the figure of November 2025 (-1,980), and compared to the same month of 2024 (-3,878).

In 2025, the natural balance was -34,244, worsening compared to that recorded in 2024 (-33,732).

Figure 3

LIVE BIRTHS, DEATHS, AND NATURAL BALANCE, PORTUGAL, JANUARY 2023 TO DECEMBER 2025



**Note:** The natural balance is calculated based on the number of live births of mothers residing in Portugal and the number of deaths of residents in Portugal.

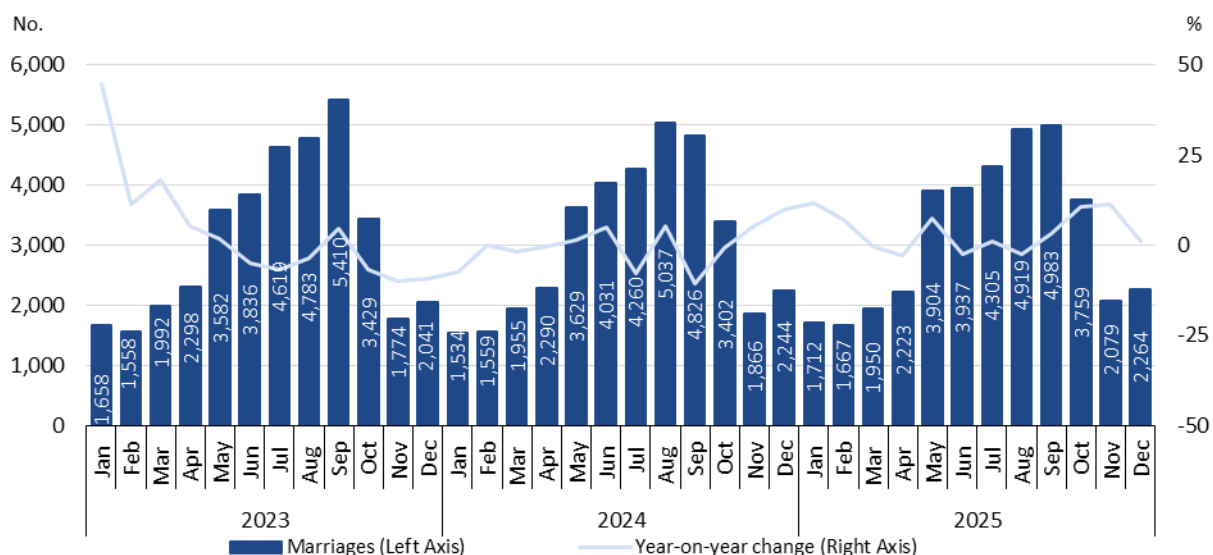
#### 4. IN DECEMBER 2025, THE NUMBER OF CELEBRATED MARRIAGES INCREASED 0.9% COMPARED TO DECEMBER 2024

In December 2025, 2,264 marriages were celebrated, higher than the number registered in November 2025 (185 more; +8.9%) and that registered in December 2024 (20 more; +0.9%).

In 2025, 37,702 marriages were celebrated, 1,069 more (+2.9%) than in 2024. The number of celebrated marriages registered negative year-on-year changes only in four months of the year (March, April, June and August). The highest positive change was registered in January 2025 (+11.6%).

Figure 4

MARRIAGES AND YEAR-ON-YEAR CHANGE, JANUARY 2023 TO DECEMBER 2025





## TECHNICAL NOTE

Statistics Portugal releases the **preliminary** monthly **numbers** of deaths, live births, and marriages based on the information registered in the Civil Register Offices until February 6<sup>th</sup>, 2026. Indicators on the preliminary monthly number of live births, deaths, and marriages, from January 2025 to December 2025, with geographical breakdowns up to NUTS 3, by NUTS 2024, as well as weekly number of deaths, until the 5<sup>th</sup> week of 2026, by NUTS 3 and daily number of deaths, until February 1<sup>st</sup>, 2026, by NUTS 2 are made available on the Statistics Portugal Website.

Data are obtained from statistical operations of direct and exhaustive collection on live births, deaths and marriages in Portuguese territory using facts that are subject to compulsory civil registration (birth and death) in the Sistema Integrado do Registo e Identificação Civil (SIRIC).

In addition to administrative information obtained from Civil Register Offices, Statistics Portugal collects an additional set of variables identified as statistically pertinent to the National Statistic System (NSS) and the European Statistical System (EES). Data is recorded and sent electronically, in compliance with the requirements set out by Statistics Portugal and laid down in liaison with the Instituto de Registos e Notariado (IRN) and the Instituto de Gestão Financeira e Equipamentos da Justiça (IGFEJ).

## CONCEPTS

**Marriage:** Contract signed by two persons that intend to start a family in full partnership and cohabitation according to legislation. Note: marriage can be held between persons from different or same sex.

**Live birth:** This is the complete expulsion or extraction from the mother's body, irrespective of the duration of the pregnancy, of a product of fertilization that, after separation, breathes or shows any other signs of life, such as a beating of the heart or umbilical cord or actual contraction of any muscle subject to voluntary movement, whether the umbilical cord has been severed and whether the placenta is retained.

**Death:** The permanent disappearance of vital functions.

**Natural balance:** The difference between the number of live births and the number of deaths during a given period.

**Year-on-year change:** The year-on-year change compares the level of a variable between the reference month and the same month of the previous year.

---

Next Press Release – 13 March 2026

---