

12th February 2026
TRANSPORT ACTIVITIES
Air Transport Flash Statistics
December 2025

MOVEMENT OF PASSENGERS AT NATIONAL AIRPORTS INCREASED 4.7% IN 2025

In **December 2025**, 4.9 million passengers and 20.2 thousand tonnes of freight and mail were handled at national airports, corresponding to year-on-year variations of +4.6% and -8.8%, respectively (+5.0% and -2.3%, in the previous month, in the same order).

In that month, there was a daily average of 82.1 thousand passengers disembarked, higher than the approximately 78 thousand recorded in December 2024, which represents an increase of 5.2%.

In **2025** (preliminary data), the movement of passengers increased by 4.7%, while the traffic of freight and mail decreased by 0.5% (+4.3% and +14.2%, respectively, in 2024).

In 2025, the ranking of the five main countries of origin and destination of flights remained unchanged compared with the previous year. The United Kingdom remained as the main country, recording increases of 2.4% for disembarked passengers and 2.2% for embarked passengers. France kept the 2nd position, despite presenting decreases of 2.3% in the number of disembarked passengers and 1.9% in the number of embarked passengers. Spain, Germany and Italy completed the group of the main countries of origin and destination of flights, ranking 3rd, 4th and 5th, respectively.

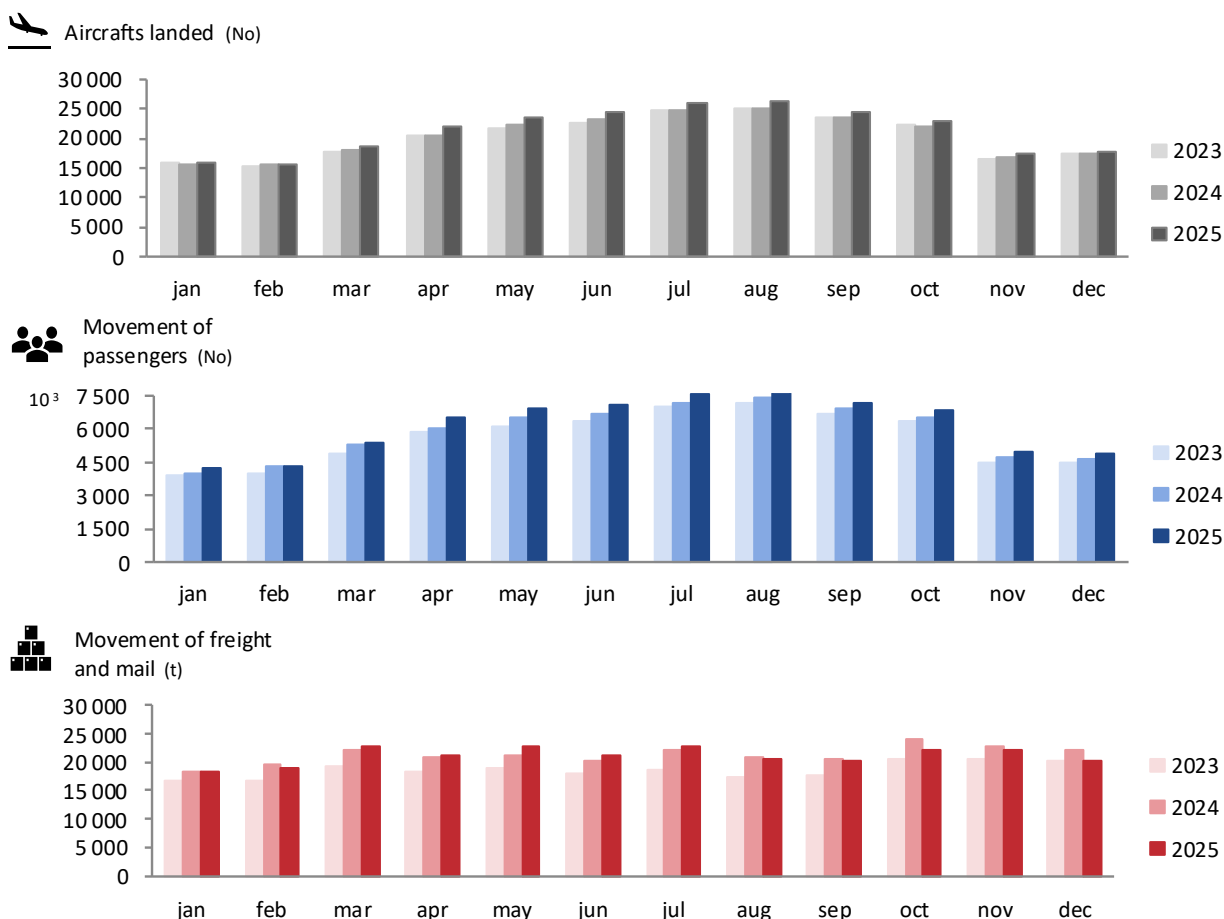
Consult the information on the [Interactive Application](#) (available only in Portuguese).

TRAFFIC AT NATIONAL AIRPORTS – MONTHLY VALUES

In **December 2025**, there were 17.7 thousand commercial aircraft landings at national airports. That month, 4.9 million passengers (embarked, disembarked and direct transits) and 20.2 thousand tonnes of freight and mail were handled. These movements corresponded to year-on-year changes of +1.4% in the number of aircraft landings, +4.6% of passengers handled and -8.8% in freight and mail. In the previous month the year-on-year changes were: +4.8%, +5.0% and -2.3%, in the same order.

Figure 1

AIRCRAFTS LANDED, PASSENGERS AND FREIGHT/MAIL MOVEMENT AT NATIONAL AIRPORTS



Source: Survey to airports and aerodromes (ANA/ANAC/Statistics Portugal)

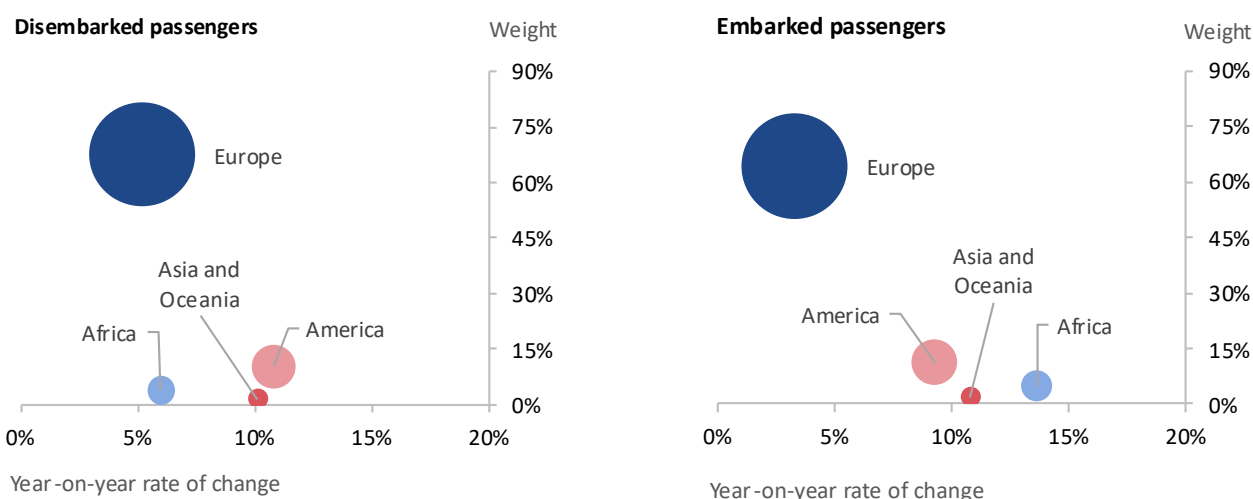
In December 2025, 83.4% of passengers disembarked at national airports corresponded to international traffic, reaching 2.1 million passengers (+6.0%¹). Most of these passengers' flights departed from the European continent, which represented 67.8% of the total, reflecting an increase of 5.2% compared with December 2024. The American continent remained the second main origin, concentrating 10.2% of the total passengers disembarked (+10.8%).

¹ Unless stated otherwise, the rates of change presented in this press release correspond to year-on-year rates of change.

Regarding embarked passengers, 82.0% corresponded to international traffic, totalling 1.9 million passengers (+4.8%). The main destination region was the European continent (64.3% of the total), which represents an increase of 3.3% compared with December 2024. Airports of the American continent were the second main destination of embarked passengers (11.1% of the total; +9.3%).

Figure 2

PASSENGERS DISEMBARKED AND EMBARKED AT NATIONAL AIRPORTS BY NATURE AT INTERNATIONAL TRAFFIC,
 BY CONTINENT OF ORIGIN/DESTINATION – DECEMBER 2025



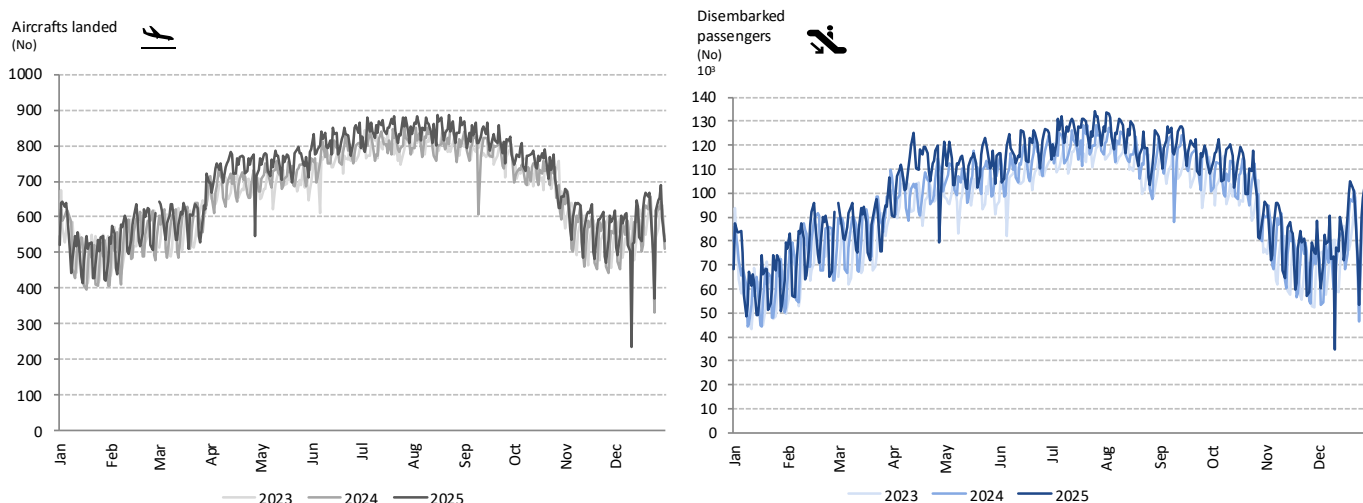
Source: Survey to airports and aerodromes (ANA/ANAC/Statistics Portugal)

The daily movement of aircrafts and passengers is strongly influenced by seasonal and weekly cycle fluctuations. The highest daily values are usually recorded during the summer period, and, in 2025, Sunday was the day of the week with the highest number of disembarked passengers.

In 2025, there have been historic monthly highs in the number of passengers handled at national airports, except for February. In December, the daily average disembarks reached 82.1 thousand passengers, higher than the approximately 78 thousand recorded in December 2024, corresponding to an increase of 5.2%.

Figure 3

AIRCRAFTS LANDED AND DISEMBARKED PASSENGERS AT NATIONAL AIRPORTS – DAILY



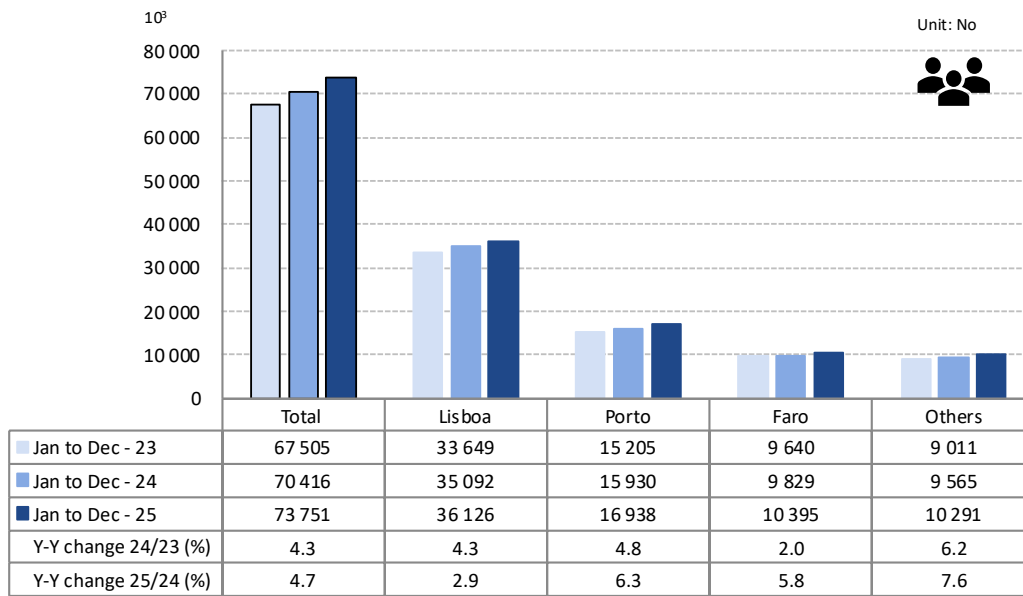
Source: Survey to airports and aerodromes (ANA/ANAC/Statistics Portugal)

TRAFFIC AT NATIONAL AIRPORTS – ACCUMULATED VALUES

In **2025** (preliminary data), the movement of passengers at national airports increased by 4.7% compared with 2024 (+4.3% in 2024). Lisboa airport concentrated 49.0% of the total passengers, handling 36.1 million, which represents a growth of 2.9% compared with 2024. Porto airport recorded 16.9 million passengers handled, corresponding to 23.0% of the total and an increase of 6.3%. Faro airport recorded 10.4 million passengers handled (14.1% of the total), an increase of 5.8% compared with the previous year.

Figure 4

MOVEMENT OF PASSENGERS AT NATIONAL AIRPORTS



Source: Survey to airports and aerodromes (ANA/ANAC/Statistics Portugal)

Considering the volume of passengers disembarked and embarked on international flights in 2025, the ranking of the five main countries of origin and destination of flights remained unchanged compared with the previous year. The United Kingdom remained as the main country, recording increases of 2.4% for disembarked passengers and 2.2% for embarked passengers. France kept the 2nd position, despite presenting decreases of 2.3% in the number of disembarked passengers and 1.9% in the number of embarked passengers. Spain, Germany and Italy completed the group of the main countries of origin and destination of flights, ranking 3rd, 4th and 5th, respectively.

Table 1

MAIN COUNTRIES OF ORIGIN AND DESTINATION OF FLIGHTS WITH PASSENGERS AT NATIONAL AIRPORTS

Ranking	Country of origin (of the flight)	Jan to Dec 2025		Ranking	Country of destination (of the flight)	Jan to Dec 2025	
		Passengers disembarked (10 ³)	Y-on-Y change (%)			Passengers embarked (10 ³)	Y-on-Y change (%)
1	United Kingdom	4 930.3	2.4	1	United Kingdom	4 899.7	2.2
2	France	4 137.4	-2.3	2	France	4 135.2	-1.9
3	Spain	3 709.6	2.6	3	Spain	3 660.7	3.2
4	Germany	2 772.6	6.9	4	Germany	2 781.3	6.9
5	Italy	1 803.0	9.5	5	Italy	1 790.0	9.4

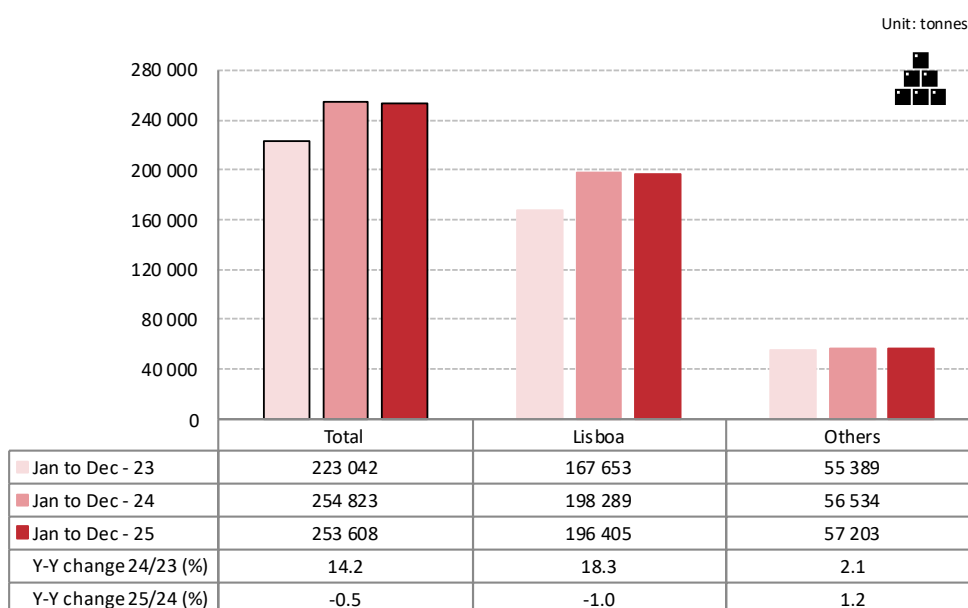
Source: Survey to airports and aerodromes (ANA/ANAC/Statistics Portugal)

In 2025, the movement of freight and mail at national airports decreased by 0.5% compared with 2024 (+14.2% in 2024), totalling 253.6 thousand tonnes. Lisbon airport accounted for 77.4% of this total, handling 196.4 thousand tonnes, which represented a decrease of 1.0% compared to 2024.

Considering the of other airports, the movement of freight and mail increased by 1.2%.

Figure 5

FREIGHT AND MAIL MOVEMENT AT NATIONAL AIRPORTS



Source: Survey to airports and aerodromes (ANA/ANAC/Statistics Portugal)



METHODOLOGICAL NOTES

In this Press Release the following statistical data are used:

2025: preliminary results;

2024: definitive results;

2023: definitive results.

Main national airports (considered in this Press Release as national airports): Lisboa, Porto, Faro, Ponta Delgada, Madeira, Porto Santo, Beja, Horta, Flores, Santa Maria, Terceira, Pico, Graciosa, São Jorge, Corvo, Portimão, Bragança, Cascais, Vila Real and Viseu.

SOURCES:

Survey to airports and aerodromes (ANA/ANAC/Statistics Portugal)

MAIN CONCEPTS:

Commercial aviation - Air transport flight performed for the public transport of passengers, freight or mail, for remuneration and for hire.

Commercial air traffic - Movement of aircrafts, passengers, freight and mail in commercial aviation.

INTERACTIVE APPLICATION AT STATISTICS PORTUGAL:

[Interactive Application \(available only in Portuguese\)](#)

MONTHLY INDICATORS AT STATISTICS PORTUGAL PORTAL:

[Aircrafts landed \(No.\) in airports by Geographic localization, Type of traffic and Nature of traffic; Monthly](#)

[Aircrafts landed \(No.\) in airports by Continent of origin; Monthly](#)

[Aircrafts take-offs \(No.\) in airports by Geographic localization, Type of traffic and Nature of traffic; Monthly](#)

[Disembarked passengers \(No.\) in airports by Geographic localization, Type of traffic and Nature of traffic; Monthly](#)

[Disembarked passengers \(No.\) in Airports by Continent of origin; Monthly](#)

[Embarked passengers \(No.\) in airports by Geographic localization, Type of traffic and Nature of traffic; Monthly](#)

[Embarked passengers \(No.\) in airports by Destination continent; Monthly](#)

[Passengers in direct transit \(No.\) in airports by Geographic localization, Type of traffic and Nature of traffic; Monthly](#)

[Disembarked load \(t\) in airports by Geographic localization, Type of traffic and Nature of traffic; Monthly](#)

[Embarked load \(t\) in airports by Geographic localization, Type of traffic and Nature of traffic; Monthly](#)

[Disembarked mail \(t\) in airports by Geographic localization, Type of traffic and Nature of traffic; Monthly](#)

[Embarked mail \(t\) in airports by Geographic localization, Type of traffic and Nature of traffic; Monthly](#)



ACRONYMS AND DESIGNATIONS

ANA	Portugal Airports, S.A.
ANAC	National Civil Aviation Authority
INE	Statistics Portugal

Next Press Release (monthly) - Air Transport Flash Statistics – 13th March 2026

Next Press Release (quarterly) - Transport activities (Q4 2025) – 6th March 2026
