

16 January 2026
 VITAL STATISTICS – MONTHLY DATA
 December 2025

MORTALITY INCREASES 15.8% COMPARED WITH THE SAME MONTH OF 2024

In December 2025, there were 12,669 deaths, 3,250 more (+34.5%) than in the previous month. Compared to the same month of 2024, there was an increase of 1,729 deaths (+15.8%). The number of deaths of children under 1 year of age was 20, same value as December 2024.

In total, in 2025, there were 122,151 deaths in Portugal, higher than in 2024 (119,027), representing an increase of 3,124 deaths (+2.6%).

In November 2025, 7,400 live births were registered, 164 less (-2.2%) compared to October 2025, but 293 more (+4.1%) compared to the same month of 2024.

In November 2025, the natural balance was -1,985¹, having improved in relation to the same month of 2024, when it reached -2,304.

In November 2025, 2,076 marriages were celebrated, 1,676 less (-44,7%) than in October 2025, but 210 more (+11.3%) than in November 2024.

In this press release, Statistics Portugal provides **preliminary data** on the number of deaths per month until December 2025², and the number of live births and marriages per month until November 2025, that occurred in national territory. The indicators published and analyzed are available on the Official Statistics Portal (www.ine.pt), with geographical breakdowns NUTS 2 and NUTS 3. The hyperlinks to these statistics can be found in the Excel file published together with this Press Release. The information is obtained from the Sistema Integrado do Registo e Identificação Civil (SIRIC) until January 13th, 2026.

¹ The natural balance is calculated based on the difference between the number of live births of mothers residing in Portugal and the number of deaths of residents in Portugal.

² After the release of mortality data for 2022 and considering the decrease of the impact of deaths due to COVID-19 on mortality, the analysis regarding the number of deaths per week was suspended. However, the release of indicators regarding the number of weekly deaths, by NUTS 3 breakdown, until the 1st week of 2026, and daily deaths, by NUTS 2 breakdown, until January 4th, 2026, is assured.



PRESS RELEASE

1. IN DECEMBER 2025, THE NUMBER OF DEATHS INCREASED 15.8% COMPARED TO THE SAME MONTH OF 2024

In December 2025, there were 12,669 deaths (of which 45 were from residents abroad), 3,250 more (+34.5%) than in the previous month. Compared to the same month of 2024, there was an increase of 1,729 deaths (+15.8%).

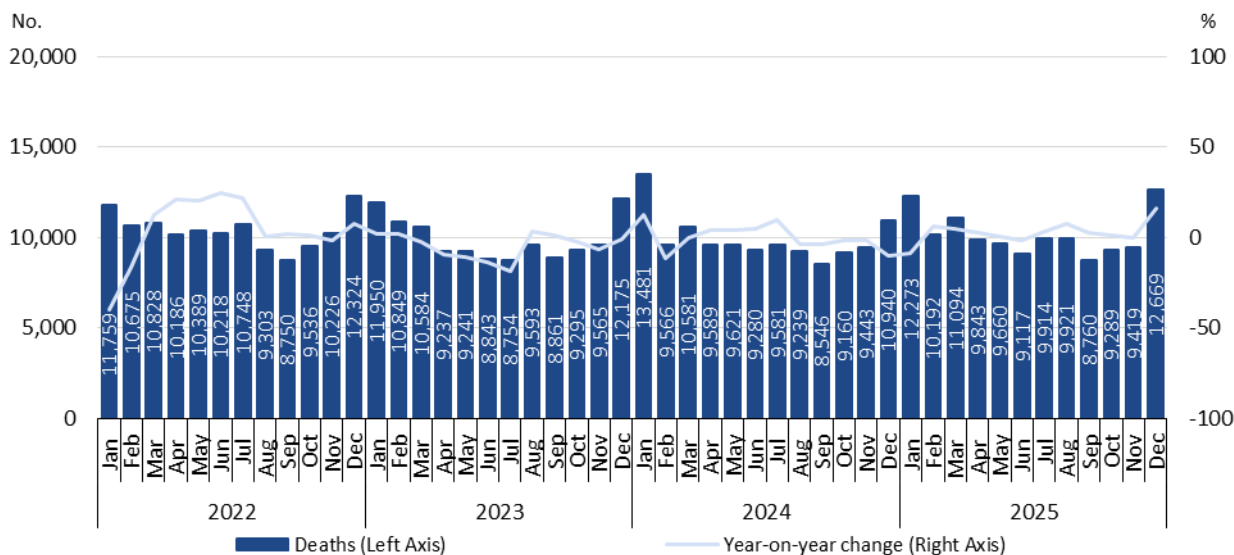
In that month, the number of deaths of children under 1 year old was 20 (all of them born to mothers residing in Portugal), two less than in the previous month, but equal to the same month of 2024.

In 2025, there were 122,151 deaths in Portugal (including 619 deaths of residents abroad), 3,124 (+2.6%) more than in 2024.

Most deaths occurred at advanced ages: 87.0% of deaths corresponded to people aged 65 or over and more than half (61.2%) to people aged 80 or over. The number of deaths of children under 1 year old was 241 (including two deaths of children whose mothers lived abroad), which corresponded to a decrease of 14 child deaths compared to 2024.

Figure 1

DEATHS AND YEAR-ON-YEAR CHANGE, JANUARY 2022 TO DECEMBER 2025





PRESS RELEASE

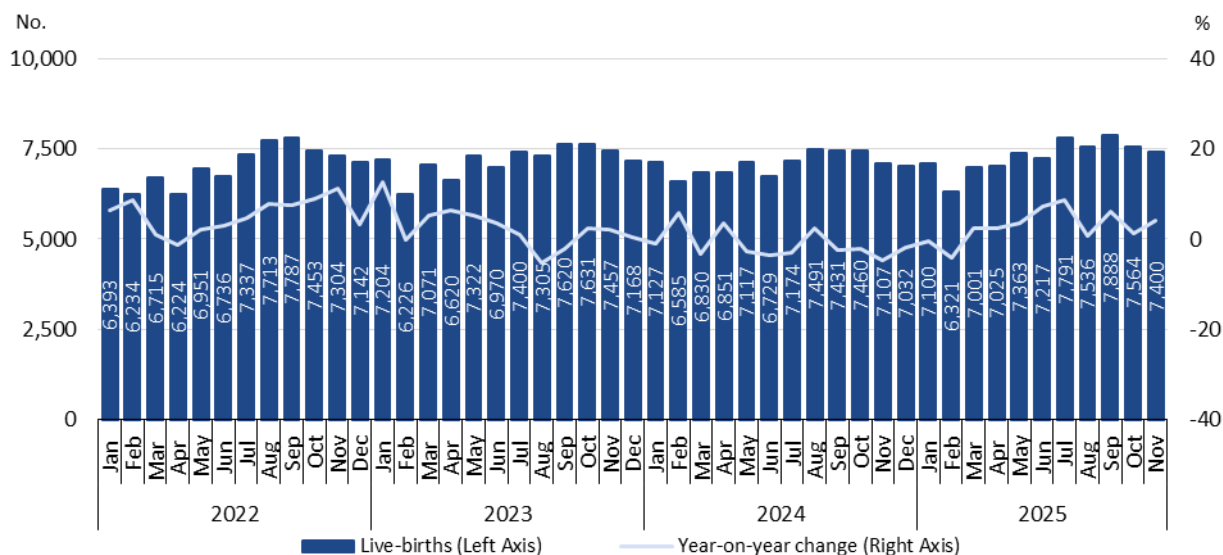
2. IN NOVEMBER 2025, THE NUMBER OF LIVE BIRTHS INCREASED 4.1% COMPARED TO NOVEMBER 2024

In November 2025, there were 7,400 live births (of which 18 were born to mothers residing abroad), corresponding to a decrease of 2.2% (164 less) compared to October 2025, but to an increase of 4.1% (293 more) compared to the same month of 2024.

From January to November 2025, 80,206 live births were registered in the country, 2,304 (+3.0%) more than in the same period of 2024, of which 235 were born to mothers residing abroad (268 in 2024).

Figure 2

LIVE BIRTHS AND YEAR-ON-YEAR CHANGE, JANUARY 2022 TO NOVEMBER 2025



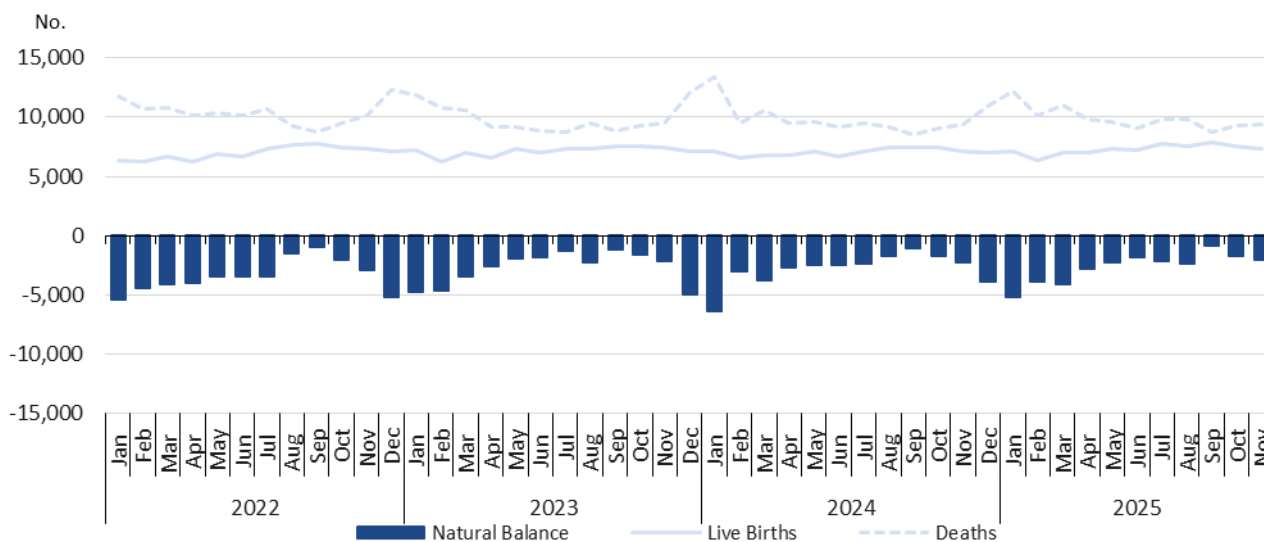
3. NATURAL BALANCE OF -1,985 IN NOVEMBER 2025

In November 2025, the natural balance registered the value of -1,985, having worsened compared to the figure of October 2025 (-1,690), but having improved compared to the same month of 2024 (-2,304).

In the first eleven months of the year, the cumulative value of the natural balance was -28,937 (-29,854 in the same period of 2024).

Figure 3

LIVE BIRTHS, DEATHS, AND NATURAL BALANCE, PORTUGAL, JANUARY 2022 TO NOVEMBER 2025



Note: The natural balance is calculated based on the number of live births of mothers residing in Portugal and the number of deaths of residents in Portugal.

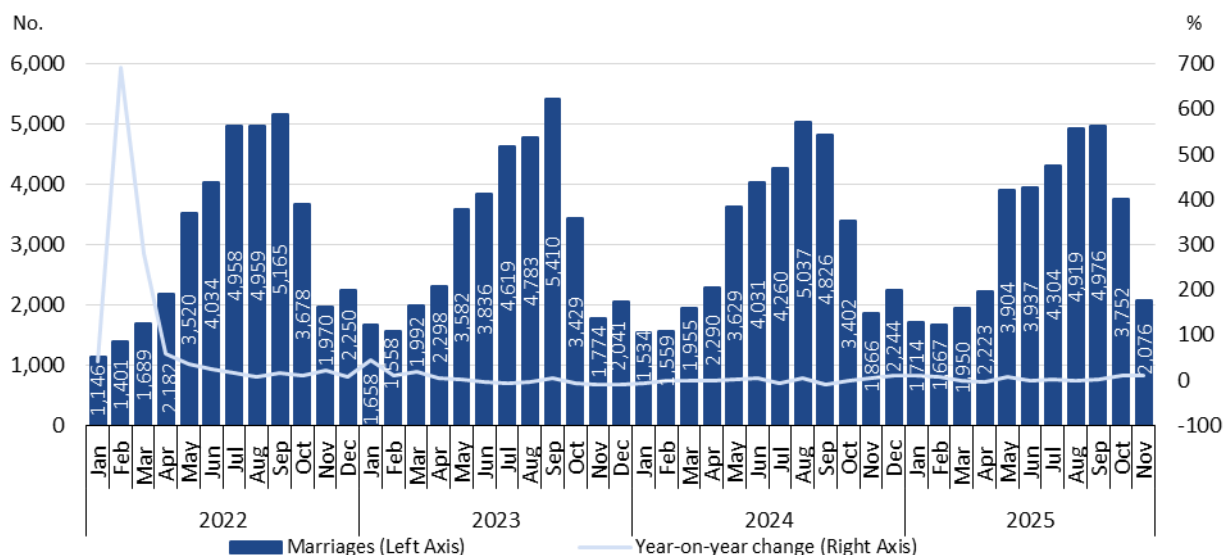
4. IN NOVEMBER 2025, THE NUMBER OF CELEBRATED MARRIAGES INCREASED 11.3% COMPARED TO NOVEMBER 2024

In November 2025, 2,076 marriages were celebrated, lower than the number registered in October 2025 (1,677 less; -44.7%), but higher than that registered in November 2024 (210 more; +11.3%).

From January to November 2025, 35,422 marriages were celebrated, 1,033 more (+3.0%) than in the same period of 2024.

Figure 4

MARRIAGES AND YEAR-ON-YEAR CHANGE, JANUARY 2022 TO NOVEMBER 2025



TECHNICAL NOTE

Statistics Portugal releases the **preliminary** monthly **numbers** of deaths, live births, and marriages based on the information registered in the Civil Register Offices until January 13th, 2026. Indicators on the preliminary monthly number of live births, deaths, and marriages, from January 2025 to November 2025, with geographical breakdowns up to NUTS 3, by NUTS 2024, as well as weekly number of deaths, until the 1st week of 2026, by NUTS 3 and daily number of deaths, until January 4th, 2026, by NUTS 2 are made available on the Statistics Portugal Website.

Data are obtained from statistical operations of direct and exhaustive collection on live births, deaths and marriages in Portuguese territory using facts that are subject to compulsory civil registration (birth and death) in the Sistema Integrado do Registo e Identificação Civil (SIRIC).

In addition to administrative information obtained from Civil Register Offices, Statistics Portugal collects an additional set of variables identified as statistically pertinent to the National Statistic System (NSS) and the European Statistical System (EES). Data is recorded and sent electronically, in compliance with the requirements set out by Statistics Portugal and laid down in liaison with the Instituto de Registos e Notariado (IRN) and the Instituto de Gestão Financeira e Equipamentos da Justiça (IGFEJ).

CONCEPTS

Marriage: Contract signed by two persons that intend to start a family in full partnership and cohabitation according to legislation. Note: marriage can be held between persons from different or same sex.

Live birth: This is the complete expulsion or extraction from the mother's body, irrespective of the duration of the pregnancy, of a product of fertilization that, after separation, breathes or shows any other signs of life, such as a beating of the heart or umbilical cord or actual contraction of any muscle subject to voluntary movement, whether the umbilical cord has been severed and whether the placenta is retained.

Death: The permanent disappearance of vital functions.

Natural balance: The difference between the number of live births and the number of deaths during a given period.

Year-on-year change: The year-on-year change compares the level of a variable between the reference month and the same month of the previous year.

Next Press Release – 13 February 2026
