

12<sup>th</sup> December 2025  
TRANSPORT ACTIVITIES  
Air Transport Flash Statistics  
October 2025

## NATIONAL AIRPORTS HANDLED 6.8 MILLION PASSENGERS IN OCTOBER

In **October 2025**, 6.8 million passengers and 22.2 thousand tonnes of freight and mail were handled at national airports, corresponding to year-on-year variations of +4.5% and -7.5%, respectively (+3.4% and -2.3%, in the previous month, in the same order).

In that month, there was a daily average of 108.6 thousand passengers disembarked, above the 103,700 recorded in October 2024, which represents an increase of 4.8%.

From **January to October of 2025**, the movement of passengers increased by 4.7%, while the traffic of freight and mail increased by 0.6% (in the same period of 2024: +4.2% and +15.2%, respectively).

The United Kingdom remained the main country of origin and destination of flights, having recorded increases both in the disembarked passengers (+2.3%), and embarked passengers (+2.2%), compared with the same period of 2024. France and Spain ranked, respectively, 2<sup>nd</sup> and 3<sup>rd</sup> between the main countries of origin and destination of flights.

Consult the information on the [Interactive Application](#) (available only in Portuguese).

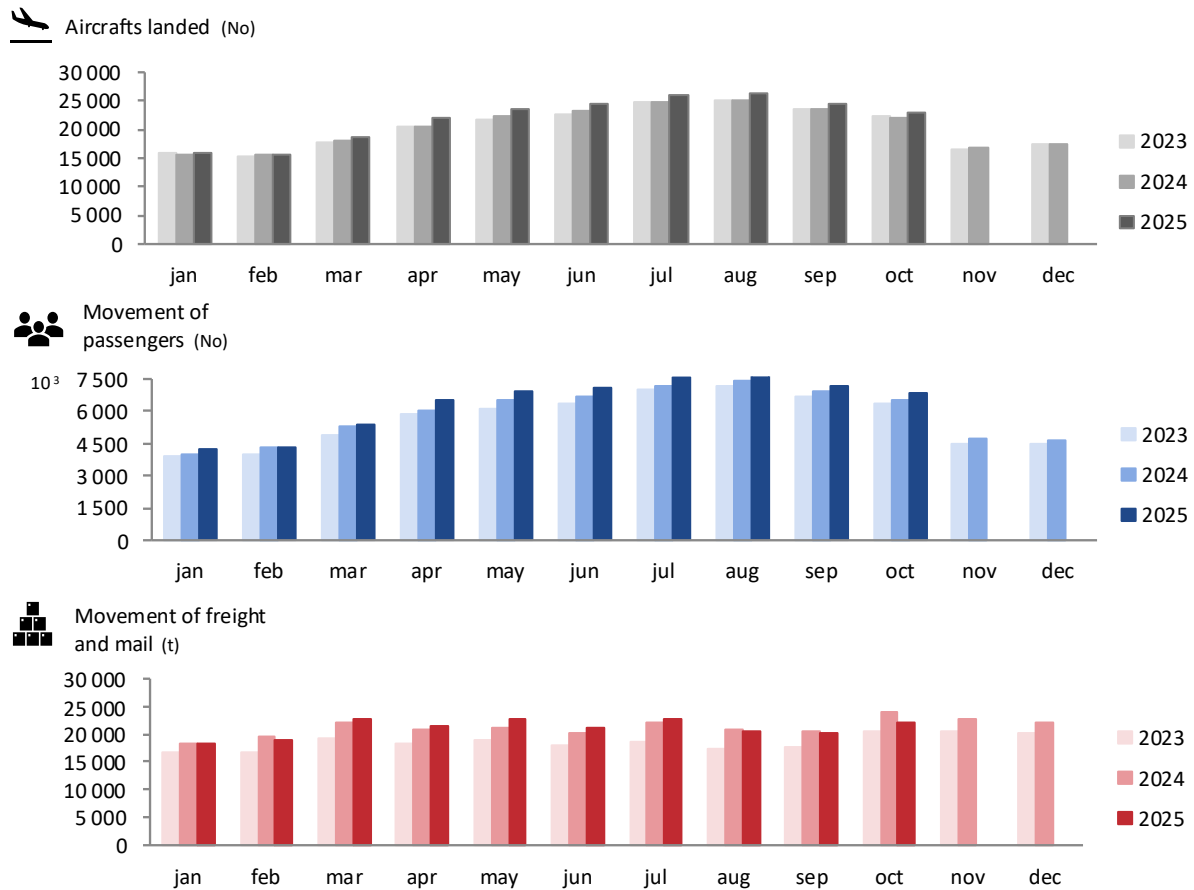
---

## TRAFFIC AT NATIONAL AIRPORTS – MONTHLY VALUES

In **October 2025**, there were 23.0 thousand commercial aircraft landings at national airports, and 6.8 million passengers (embarked, disembarked and direct transits) and 22.2 thousand tonnes of freight and mail were handled. These movements corresponded to year-on-year changes of +4.4% in the number of aircraft landings, +4.5% of passengers handled and -7.5% in freight and mail. In the previous month the year-on-year changes were: +4.0%, +3.4% and -2.3%, in the same order.

Figure 1

## AIRCRAFTS LANDED, PASSENGERS AND FREIGHT/MAIL MOVEMENT AT NATIONAL AIRPORTS



Source: Survey to airports and aerodromes (ANA/ANAC/Statistics Portugal)

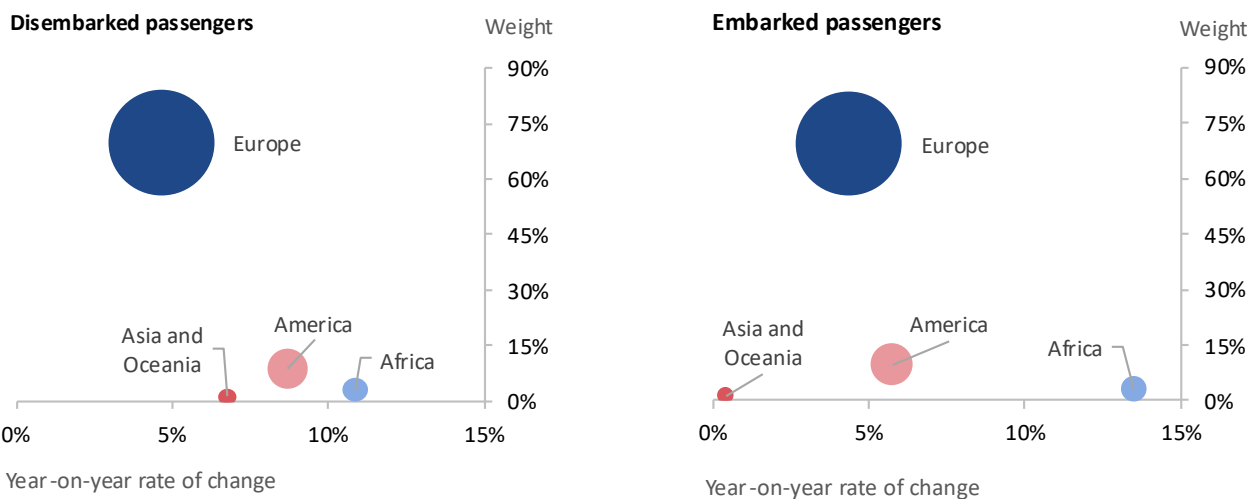
In October 2025, 83.1% of passengers disembarked at national airports corresponded to international traffic, reaching 2.8 million passengers (+5.3%<sup>1</sup>). Most of these passengers' flights departed from the European continent, which represented 70.0% of the total, reflecting growth an increase of 4.6% compared with October 2024. The American continent remained the second main origin, concentrating 8.9% of the total passengers disembarked (+8.7%).

<sup>1</sup> Unless stated otherwise, the rates of change presented in this press release correspond to year-on-year rates of change.

Regarding embarked passengers, 83.6% corresponded to international traffic, totalling 2.9 million passengers (+4.8%). The majority had, as main destination, airports on the European continent (69.5% of the total), which represents an increase of 4.4% compared with October 2024. Airports of the American continent were the second main destination of embarked passengers (9.7% of the total; +5.7%).

Figure 2

PASSENGERS DISEMBARKED AND EMBARKED AT NATIONAL AIRPORTS BY NATURE AT INTERNATIONAL TRAFFIC,  
 BY CONTINENT OF ORIGIN/DESTINATION – OCTOBER 2025



Source: Survey to airports and aerodromes (ANA/ANAC/Statistics Portugal)

The daily movement of aircrafts and passengers is strongly influenced by seasonal and weekly cycle fluctuations. The highest daily values are generally recorded during the summer period, and, in 2024, Sunday was the day of the week with the highest number of disembarked passengers.

Since the beginning of 2025, there have been historic monthly highs in the number of passengers handled at national airports, except for February. In October, the daily average disembarks reached 108.6 thousand passengers, higher than the value recorded in October 2024 (103.7 thousand), corresponding to an increase of 4.8%.

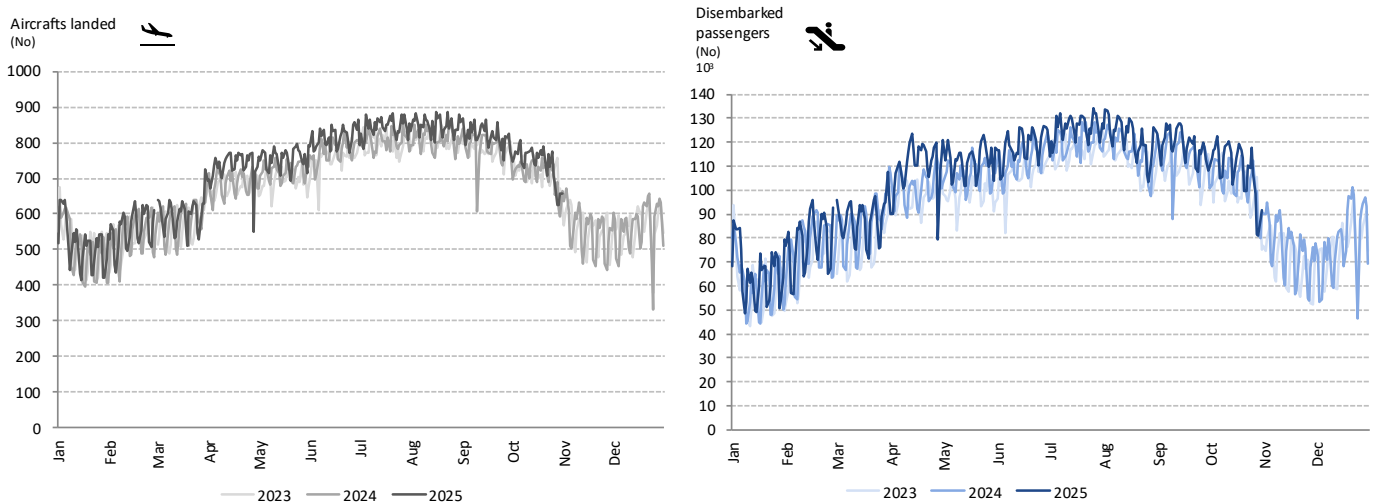


PRESS RELEASE



Figure 3

## AIRCRAFTS LANDED AND DISEMBARKED PASSENGERS AT NATIONAL AIRPORTS – DAILY



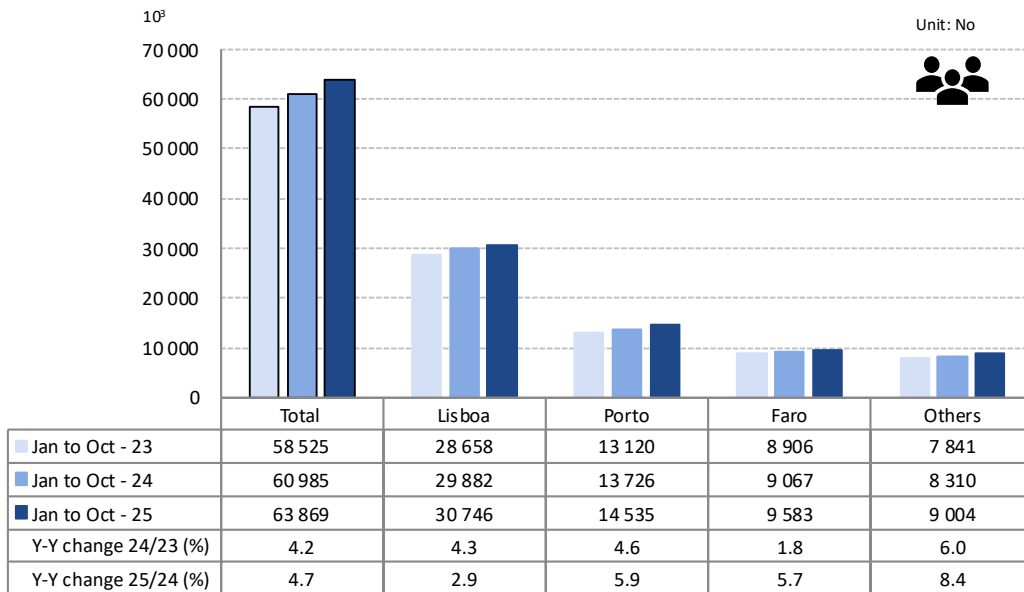
Source: Survey to airports and aerodromes (ANA/ANAC/Statistics Portugal)

## TRAFFIC AT NATIONAL AIRPORTS – ACCUMULATED VALUES

Between **January and October of 2025**, the movement of passengers at national airports increased by 4.7% compared with the same period of 2024 (+4.2% in 2024). Lisboa airport concentrated 48.1% of the total passengers, handling 30.7 million, which represents a growth of 2.9% compared with the same period of 2024. Porto airport accounted for 22.8% of the total passengers handled, reaching 14.5 million (+5.9%) and Faro airport recorded an increase of 5.7% in the movement of passengers, totalling 9.6 million (15.0% of the total).

Figure 4

## MOVEMENT OF PASSENGERS AT NATIONAL AIRPORTS



Source: Survey to airports and aerodromes (ANA/ANAC/Statistics Portugal)

Considering the volume of passengers disembarked and embarked on international flights between January and October of 2025, the United Kingdom remained the main country of origin and destination, recording increases of 2.3% in the number of disembarked and 2.2% in the number of embarked passengers, compared with the same period of 2024. In the opposite direction, France recorded decreases of 1.9% in the number of disembarked and 1.5% in the embarked passengers, occupying, nevertheless, the 2<sup>nd</sup> position. Spain, Germany and Italy completed the list of the main countries of origin and destination, ranking 3<sup>rd</sup>, 4<sup>th</sup> and 5<sup>th</sup>, respectively.

Table 1

## MAIN COUNTRIES OF ORIGIN AND DESTINATION OF FLIGHTS WITH PASSENGERS AT NATIONAL AIRPORTS

Ranking	Country of origin (of the flight)	Jan to Oct 2025		Ranking	Country of destination (of the flight)	Jan to Oct 2025	
		Passengers disembarked (10 <sup>3</sup> )	Y-on-Y change (%)			Passengers embarked (10 <sup>3</sup> )	Y-on-Y change (%)
1	United Kingdom	4 389.3	2.3	1	United Kingdom	4 369.4	2.2
2	France	3 603.8	-1.9	2	France	3 594.5	-1.5
3	Spain	3 190.2	1.9	3	Spain	3 153.7	2.7
4	Germany	2 400.8	7.5	4	Germany	2 410.0	7.5
5	Italy	1 550.4	10.2	5	Italy	1 547.3	10.0

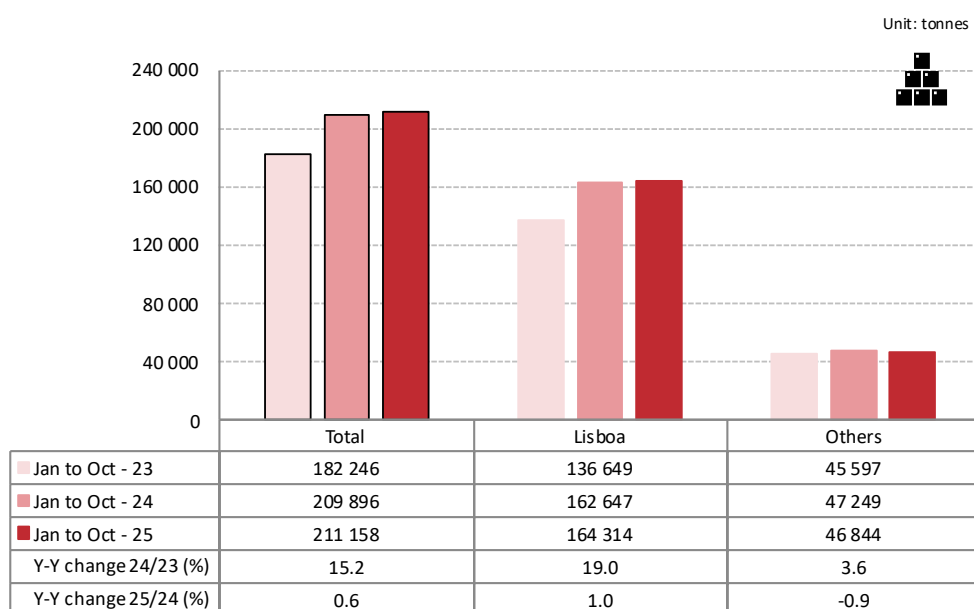
Source: Survey to airports and aerodromes (ANA/ANAC/Statistics Portugal)

Between January and October of 2025, there was an increase of 0.6% in freight and mail handled at national airports, compared with the same period of 2024 (+15.2% in 2024), totalling 211.2 thousand tonnes. The movement of freight and mail at Lisboa airport represented 77.8% of the total, reaching 164.3 thousand tonnes (+1.0% compared with the same period of 2024).

Considering the group of other airports, the movement of freight and mail decreased by 0.9%.

Figure 5

## FREIGHT AND MAIL MOVEMENT AT NATIONAL AIRPORTS



Source: Survey to airports and aerodromes (ANA/ANAC/Statistics Portugal)

## METHODOLOGICAL NOTES

In this Press Release the following statistical data are used:

2025: preliminary results;

2024: provisional results;

2023: definitive results.

**Main national airports** (considered in this Press Release as national airports): Lisboa, Porto, Faro, Ponta Delgada, Madeira, Porto Santo, Beja, Horta, Flores, Santa Maria, Terceira, Pico, Graciosa, São Jorge, Corvo, Portimão, Bragança, Cascais, Vila Real and Viseu.

## SOURCES:

Survey to airports and aerodromes (ANA/ANAC/Statistics Portugal)

## MAIN CONCEPTS:

**Commercial aviation** - Air transport flight performed for the public transport of passengers, freight or mail, for remuneration and for hire.

**Commercial air traffic** - Movement of aircrafts, passengers, freight and mail in commercial aviation.

## INTERACTIVE APPLICATION AT STATISTICS PORTUGAL:

[Interactive Application](#) (available only in Portuguese)

## MONTHLY INDICATORS AT STATISTICS PORTUGAL PORTAL:

[Aircrafts landed \(No.\) in airports by Geographic localization, Type of traffic and Nature of traffic; Monthly](#)

[Aircrafts landed \(No.\) in airports by Continent of origin; Monthly](#)

[Aircrafts take-offs \(No.\) in airports by Geographic localization, Type of traffic and Nature of traffic; Monthly](#)

[Disembarked passengers \(No.\) in airports by Geographic localization, Type of traffic and Nature of traffic; Monthly](#)

[Disembarked passengers \(No.\) in Airports by Continent of origin; Monthly](#)

[Embarked passengers \(No.\) in airports by Geographic localization, Type of traffic and Nature of traffic; Monthly](#)

[Embarked passengers \(No.\) in airports by Destination continent; Monthly](#)

[Passengers in direct transit \(No.\) in airports by Geographic localization, Type of traffic and Nature of traffic; Monthly](#)

[Disembarked load \(t\) in airports by Geographic localization, Type of traffic and Nature of traffic; Monthly](#)

[Embarked load \(t\) in airports by Geographic localization, Type of traffic and Nature of traffic; Monthly](#)

[Disembarked mail \(t\) in airports by Geographic localization, Type of traffic and Nature of traffic; Monthly](#)

[Embarked mail \(t\) in airports by Geographic localization, Type of traffic and Nature of traffic; Monthly](#)



DIISTAQUE

PRESS RELEASE

#### ACRONYMS AND DESIGNATIONS

ANA	Portugal Airports, S.A.
ANAC	National Civil Aviation Authority
INE	Statistics Portugal

---

**Next Press Release (monthly) - Air Transport Flash Statistics – 13<sup>th</sup> January 2026**

**Next Press Release (quarterly) - Transport activities (Q4 2025) – 6<sup>th</sup> March 2026**

---