

17 October 2025
 VITAL STATISTICS – MONTHLY DATA
 September 2025

MORTALITY INCREASES 1.9% COMPARED TO THE SAME MONTH OF 2024

In September 2025, there were 8,707 deaths, 1,196 less (-12.1%) than in the previous month. Compared to the same month of 2024, there was an increase of 161 deaths (+1.9%). The number of deaths of children under 1 year of age was 19 (22 in the same month of 2024).

In August 2025, 7,508 live births were registered, 263 less (-3.4%) compared to July 2025, but 17 more (+0.2%) compared to the same month of 2024.

In August 2025, the natural balance was -2,347¹, having worsened in relation to the same month of 2024, when it reached -1,698.

In August 2025, 4,896 marriages were celebrated, 595 more (+13.8%) than in July 2025, but 141 less (-2.8%) than in August 2024.

In this press release, Statistics Portugal provides **preliminary data** on the number of deaths per month until September 2025², and the number of live births and marriages per month until August 2025, that occurred in national territory. The indicators published and analyzed are available on the Official Statistics Portal (www.ine.pt), with geographical breakdowns NUTS 2 and NUTS 3. The hyperlinks to these statistics can be found in the Excel file published together with this Press Release. The information is obtained from the Sistema Integrado do Registo e Identificação Civil (SIRIC) until October 10th, 2025.

¹ The natural balance is calculated based on the difference between the number of live births of mothers residing in Portugal and the number of deaths of residents in Portugal.

² After the release of mortality data for 2022 and considering the decrease of the impact of deaths due to COVID-19 on mortality, the analysis regarding the number of deaths per week was suspended. However, the release of indicators regarding the number of weekly deaths, by NUTS 3 breakdown, until the 40th week of 2025, and daily deaths, by NUTS 2 breakdown, until October 5th, 2025, is assured.



PRESS RELEASE

1. IN SEPTEMBER 2025, THE NUMBER OF DEATHS INCREASED 1.9% COMPARED TO THE SAME MONTH OF 2024

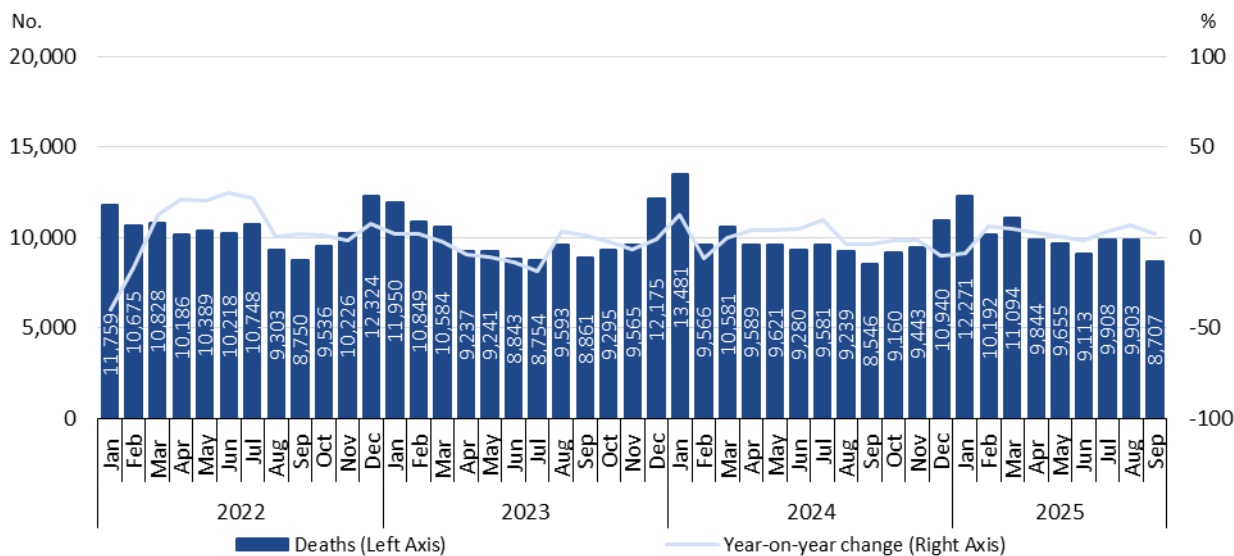
In September 2025, there were 8,707 deaths (of which 54 were from residents abroad), 1,196 less (-12.1%) than in the previous month. Compared to the same month of 2024, there was an increase of 161 deaths (+1.9%).

In that month, the number of deaths of children under 1 year old was 19 (all of them born to mothers residing in Portugal), two less than in the previous month and three less compared with the same month of 2024.

In the first nine months of the year there were 90,687 deaths in national territory, 1,203 more (+1.3%) than in the same period of 2024, of which 174 were deaths of children under 1 year of age (193 in 2024).

Figure 1

DEATHS AND YEAR-ON-YEAR CHANGE, JANUARY 2022 TO SEPTEMBER 2025





PRESS RELEASE

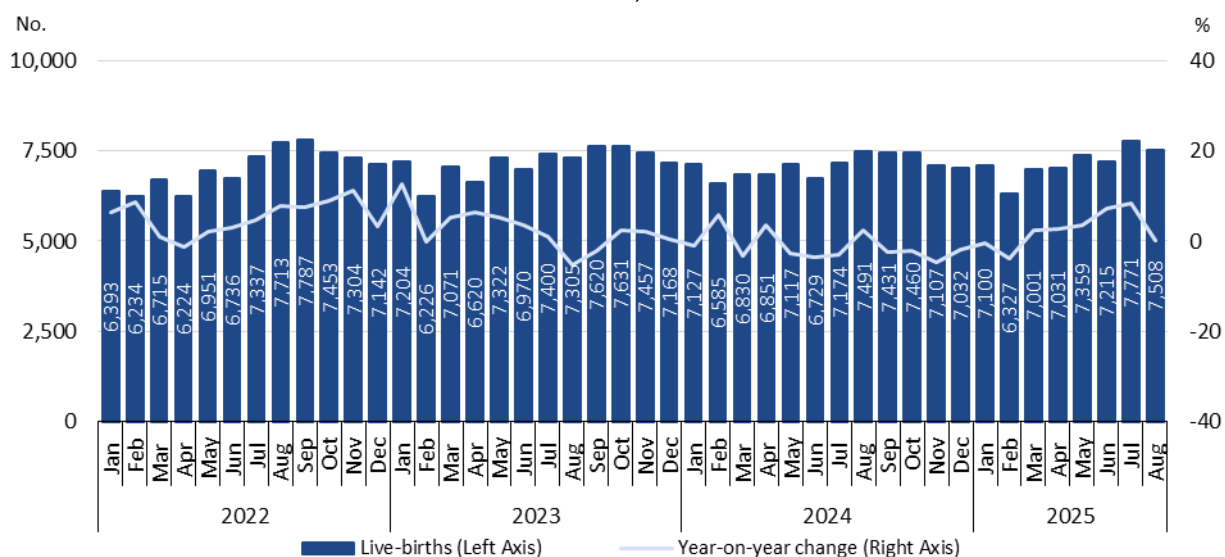
2. IN AUGUST 2025, THE NUMBER OF LIVE BIRTHS INCREASED 0.2% COMPARED TO AUGUST 2024

In August 2025, there were 7,508 live births (of which 20 were born to mothers residing abroad), corresponding to a decrease of 3.4% (263 less) compared to July 2025, but to an increase of 0.2% (17 more) compared to the same month of 2024.

In the first eight months of the year, 57,312 live births were registered in the country, 1,408 more (+2.5%) than in the same period of 2024, of which 166 were born to mothers residing abroad (199 in 2024).

Figure 2

LIVE BIRTHS AND YEAR-ON-YEAR CHANGE, JANUARY 2022 TO AUGUST 2025



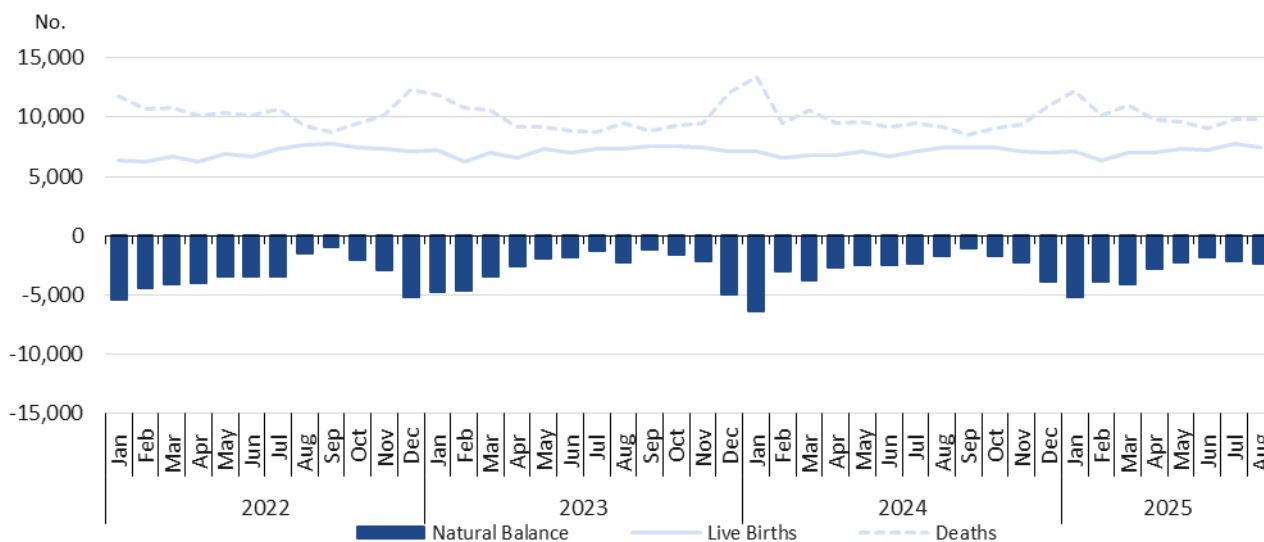
3. NATURAL BALANCE OF -2,347 IN AUGUST 2025

In August 2025, the natural balance registered the value of -2,347, having worsened compared to the figure of July 2025 (-2,106) and compared to the same month of 2024 (-1,698).

In the first eight months of the year, the cumulative value of the natural balance was -24,435 (24,793 in the same period of 2024).

Figure 3

LIVE BIRTHS, DEATHS, AND NATURAL BALANCE, PORTUGAL, JANUARY 2022 TO AUGUST 2025



Note: The natural balance is calculated based on the number of live births of mothers residing in Portugal and the number of deaths of residents in Portugal.

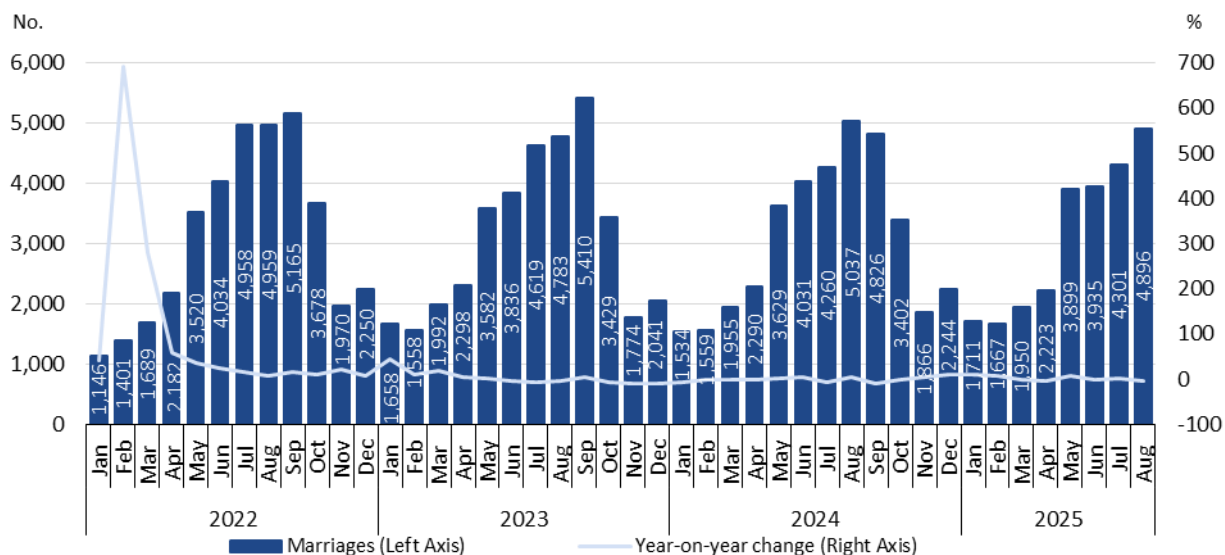
4. IN AUGUST 2025, THE NUMBER OF CELEBRATED MARRIAGES DECREASED 2.8% COMPARED TO AUGUST 2024

In August 2025, 4,896 marriages were celebrated, higher than the number registered in July 2025 (595 more; +13.8%), but lower than that registered in August 2024 (141 less; -2.8%).

In the first eight months of 2025, 24,582 marriages were celebrated, 287 more (+1.2%) than in the same period of 2024.

Figure 4

MARRIAGES AND YEAR-ON-YEAR CHANGE, JANUARY 2022 TO AUGUST 2025



TECHNICAL NOTE

Statistics Portugal releases the **preliminary** monthly **numbers** of deaths, live births, and marriages based on the information registered in the Civil Register Offices until October 10th, 2025. Indicators on the preliminary monthly number of live births, deaths, and marriages, from January 2025 to August 2025, with geographical breakdowns up to NUTS 3, by NUTS 2024, as well as weekly number of deaths, until the 40th week 2025, by NUTS 3 and daily number of deaths, until October 5th, 2025, by NUTS 2 are made available on the Statistics Portugal Website.

Data are obtained from statistical operations of direct and exhaustive collection on live births, deaths and marriages in Portuguese territory using facts that are subject to compulsory civil registration (birth and death) in the Sistema Integrado do Registo e Identificação Civil (SIRIC).

In addition to administrative information obtained from Civil Register Offices, Statistics Portugal collects an additional set of variables identified as statistically pertinent to the National Statistic System (NSS) and the European Statistical System (EES). Data is recorded and sent electronically, in compliance with the requirements set out by Statistics Portugal and laid down in liaison with the Instituto de Registos e Notariado (IRN) and the Instituto de Gestão Financeira e Equipamentos da Justiça (IGFEJ).

CONCEPTS

Marriage: Contract signed by two persons that intend to start a family in full partnership and cohabitation according to legislation. Note: marriage can be held between persons from different or same sex.

Live birth: This is the complete expulsion or extraction from the mother's body, irrespective of the duration of the pregnancy, of a product of fertilization that, after separation, breathes or shows any other signs of life, such as a beating of the heart or umbilical cord or actual contraction of any muscle subject to voluntary movement, whether the umbilical cord has been severed and whether the placenta is retained.

Death: The permanent disappearance of vital functions.

Natural balance: The difference between the number of live births and the number of deaths during a given period.

Year-on-year change: The year-on-year change compares the level of a variable between the reference month and the same month of the previous year.

Next Press Release – 14 November 2025
