

14 August 2025
 VITAL STATISTICS – MONTHLY DATA
 July 2025

NUMBER OF LIVE BIRTHS INCREASES 1.7% IN THE FIRST HALF OF 2025 COMPARED TO THE SAME PERIOD OF 2024

In July 2025 there were 9,842 deaths, 759 more (+8.4%) than in the previous month. Compared to the same month of 2024, there was an increase of 261 deaths (+2.7%). The number of deaths of children under 1 year of age was 26 (21 in the same month of 2024).

In June 2025 7,140 live births were registered, 206 less (-2.8%) compared to May 2025, but 411 more (+6.1%) compared to the same month of 2024.

In the first half of the year, 41,929 live births were registered in Portugal (690 more than in the same period of 2024), of which 130 were born to mothers residing abroad (148 in 2024).

In June 2025 the natural balance was -1,921¹, improving in relation to the same month of 2024, when it reached -2,509.

In June 2025 3,888 marriages were celebrated, three less (-0.1%) than in May 2025 and 143 less (-3.5%) than in June 2024.

In the first half of the year, 15,330 marriages were celebrated in the country (332 more than in the same period of 2024).

In this press release, Statistics Portugal provides **preliminary data** on the number of deaths per month until July 2025², and the number of live births and marriages per month until June 2025, that occurred in national territory. The indicators published and analyzed are available on the Official Statistics Portal (www.ine.pt), with geographical breakdowns NUTS 2 and NUTS 3. The hyperlinks to these statistics can be found in the Excel file published together with this Press Release. The information is obtained from the Sistema Integrado do Registo e Identificação Civil (SIRIC) until August 8th, 2025.

¹ The natural balance is calculated based on the difference between the number of live births of mothers residing in Portugal and the number of deaths of residents in Portugal.

² After the release of mortality data for 2022 and considering the decrease of the impact of deaths due to COVID-19 on mortality, the analysis regarding the number of deaths per week was suspended. However, the release of indicators regarding the number of weekly deaths, by NUTS 3 breakdown, until the 31st week of 2025, and daily deaths, by NUTS 2 breakdown, until August 3rd, 2025, is assured.



PRESS RELEASE

1. IN JULY 2025, THE NUMBER OF DEATHS INCREASED 2.7% COMPARED TO THE SAME MONTH OF 2024

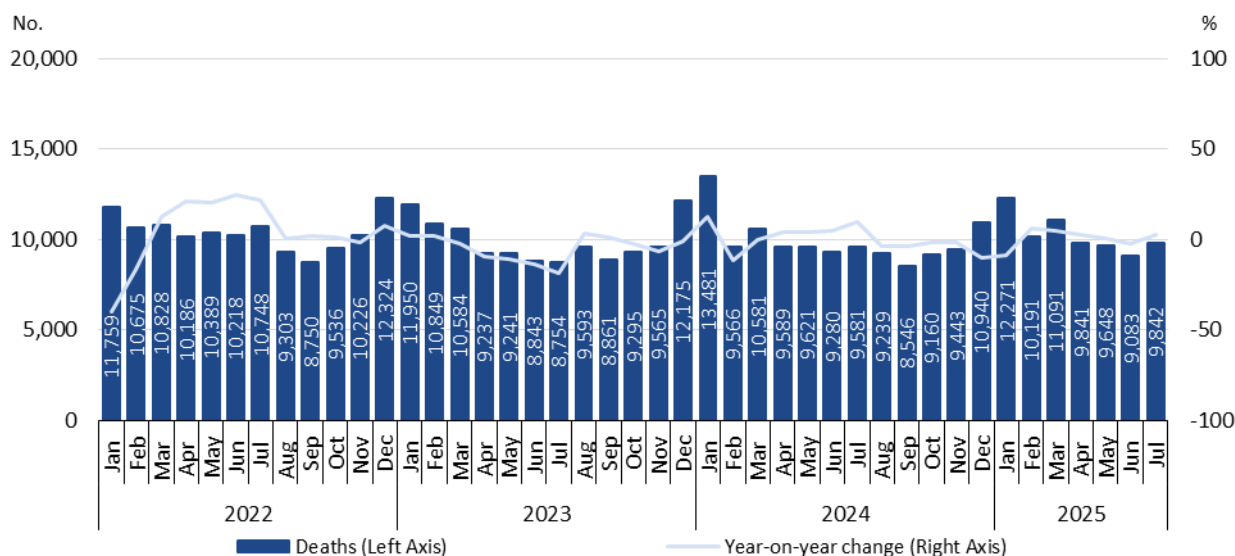
In July 2025 there were 9,842 deaths (of which 52 were from residents abroad), 759 more (+8.4%) than in the previous month. Compared to the same month of 2024, there was an increase of 261 deaths (+2.7%).

In that month, the number of deaths of children under 1 year old was 26 (all of them born to mothers residing in Portugal), eight more than in the previous month and five more compared with the same month of 2024.

In the first seven months of the year there were 71,967 deaths in national territory, 268 more (+0.4%) than in the same period of 2024, of which 131 were deaths of children under 1 year of age (150 in 2024).

Figure 1

DEATHS AND YEAR-ON-YEAR CHANGE, JANUARY 2022 TO JULY 2025





PRESS RELEASE

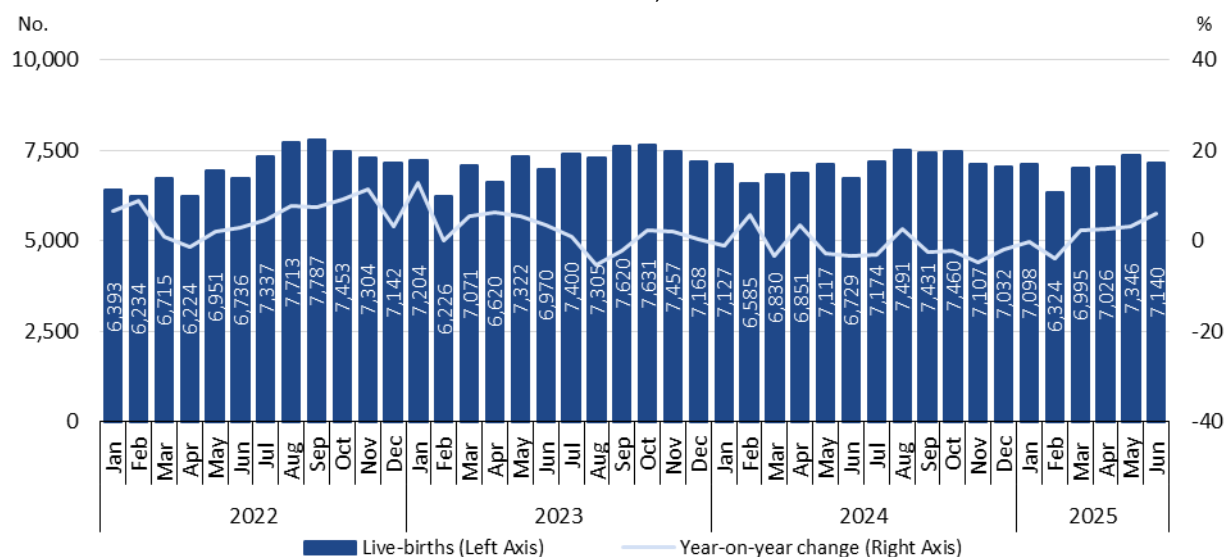
2. IN JUNE 2025, THE NUMBER OF LIVE BIRTHS INCREASED 6.1% COMPARED TO JUNE 2024

In June 2025 there were 7,140 live births (of which 27 were born to mothers residing abroad), corresponding to a decrease of 2.8% (206 less) compared to May 2025, but to an increase of 6.1% (411 more) compared to the same month of 2024.

In the first half of the year, 41,929 live births were registered in the country, 690 more (+1.7%) than in the same period of 2024, of which 130 were born to mothers residing abroad (148 in 2024).

Figure 2

LIVE BIRTHS AND YEAR-ON-YEAR CHANGE, JANUARY 2022 TO JUNE 2025



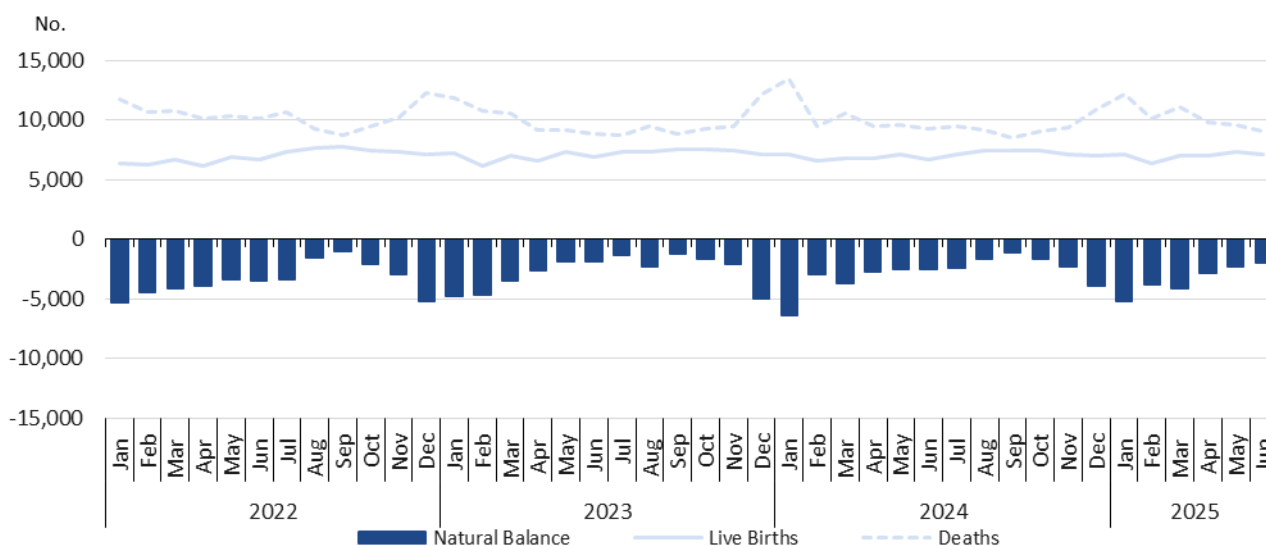
3. NATURAL BALANCE OF -1,921 IN JUNE 2025

In June 2025 the natural balance registered the value of -1,921, improving compared to the figure of May 2025 (-2,273) and to the same month of 2024 (-2,509).

In the first half of the year, the cumulative value of the natural balance was -20,050, improving in relation to that registered in the same period of 2024 (-20,710).

Figure 3

LIVE BIRTHS, DEATHS, AND NATURAL BALANCE, PORTUGAL, JANUARY 2022 TO JUNE 2025



Note: The natural balance is calculated based on the number of live births of mothers residing in Portugal and the number of deaths of residents in Portugal.

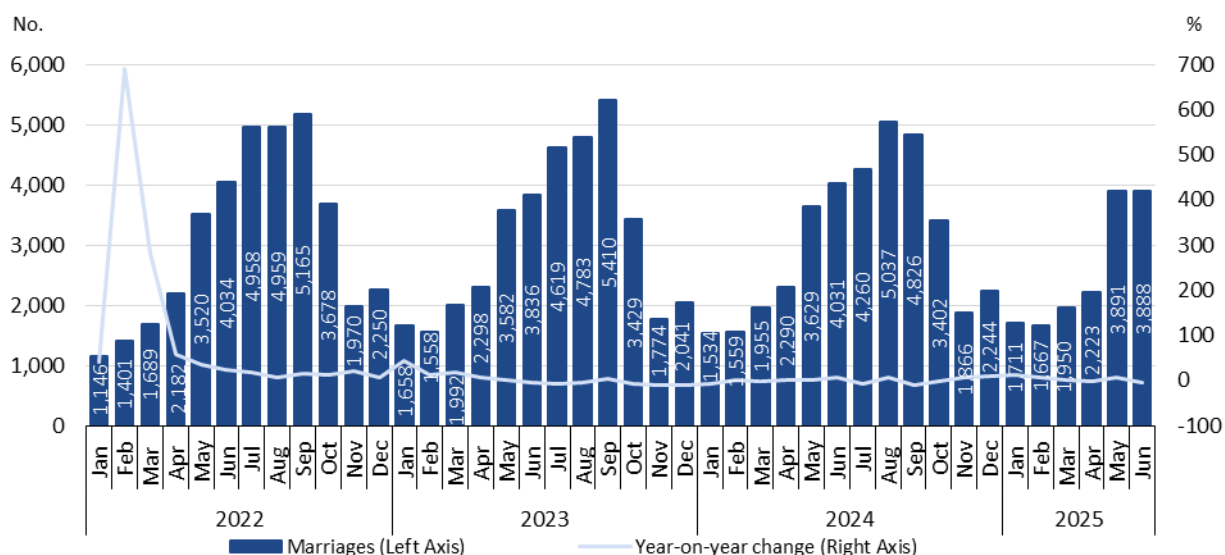
4. IN JUNE 2025, THE NUMBER OF CELEBRATED MARRIAGES DECREASED 3.5% COMPARED TO JUNE 2024

In June 2025 3,888 marriages were celebrated, lower than the number registered in May 2025 (three less; -0.1%), and that registered in June 2024 (143 less; -3.5%).

In the first half of 2025, 15,330 marriages were celebrated, 332 more (+2.2%) than in the same period of 2024.

Figure 4

MARRIAGES AND YEAR-ON-YEAR CHANGE, JANUARY 2022 TO JUNE 2025



TECHNICAL NOTE

Statistics Portugal releases the **preliminary** monthly **numbers** of deaths, live births, and marriages based on the information registered in the Civil Register Offices until August 8th, 2025. Indicators on the preliminary monthly number of live births, deaths, and marriages, from January 2025 to June 2025, with geographical breakdowns up to NUTS 3, by NUTS 2024, as well as weekly number of deaths, until the 31st week 2025, by NUTS 3 and daily number of deaths, until August 3rd, 2025, by NUTS 2 are made available on the Statistics Portugal Website.

Data are obtained from statistical operations of direct and exhaustive collection on live births, deaths and marriages in Portuguese territory using facts that are subject to compulsory civil registration (birth and death) in the Sistema Integrado do Registo e Identificação Civil (SIRIC).

In addition to administrative information obtained from Civil Register Offices, Statistics Portugal collects an additional set of variables identified as statistically pertinent to the National Statistic System (NSS) and the European Statistical System (EES). Data is recorded and sent electronically, in compliance with the requirements set out by Statistics Portugal and laid down in liaison with the Instituto de Registos e Notariado (IRN) and the Instituto de Gestão Financeira e Equipamentos da Justiça (IGFEJ).

CONCEPTS

Marriage: Contract signed by two persons that intend to start a family in full partnership and cohabitation according to legislation. Note: marriage can be held between persons from different or same sex.

Live birth: This is the complete expulsion or extraction from the mother's body, irrespective of the duration of the pregnancy, of a product of fertilization that, after separation, breathes or shows any other signs of life, such as a beating of the heart or umbilical cord or actual contraction of any muscle subject to voluntary movement, whether the umbilical cord has been severed and whether the placenta is retained.

Death: The permanent disappearance of vital functions.

Natural balance: The difference between the number of live births and the number of deaths during a given period.

Year-on-year change: The year-on-year change compares the level of a variable between the reference month and the same month of the previous year.

Next Press Release – 12 September 2025
