

August 13th 2025

INDICES OF PRODUCTION, EMPLOYMENT AND WAGES IN CONSTRUCTION

June 2025

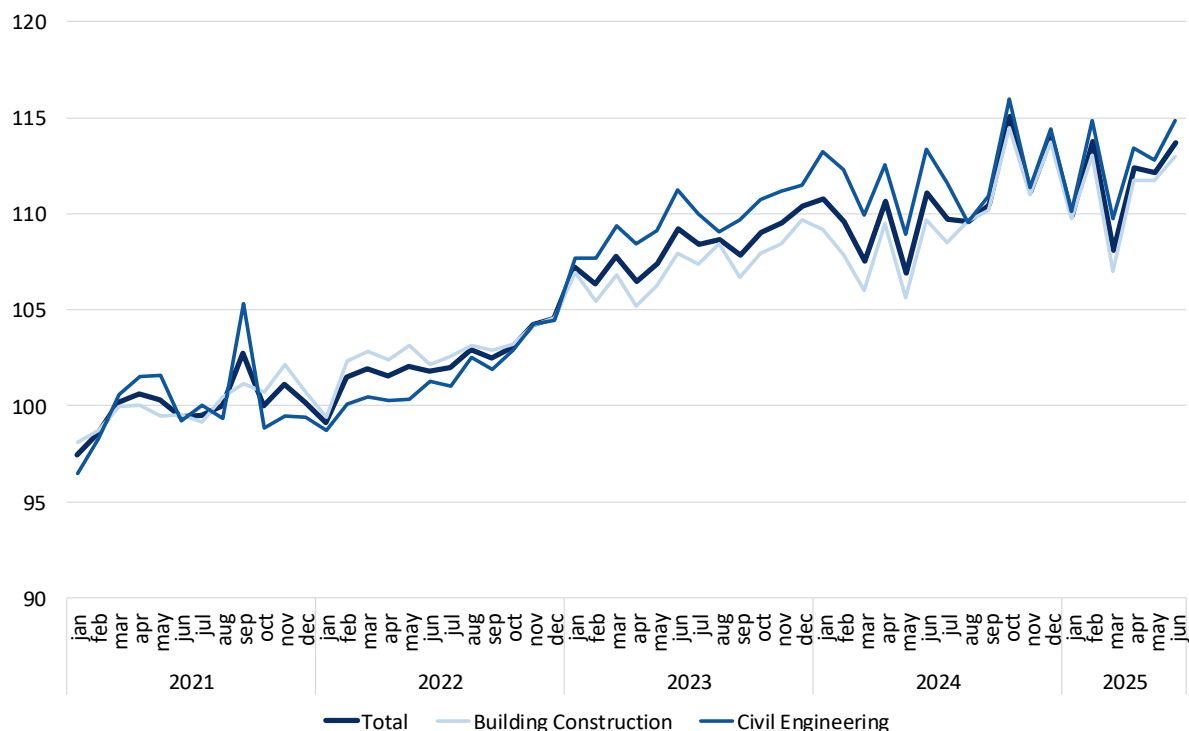
PRODUCTION IN CONSTRUCTION ACCELERATED TO 2.9%

The Index of Production in Construction increased 2.9% in year-on-year terms (3-month moving average, working days and seasonally adjusted) in June, up by 0.6 percentage points from May.

The employment and wages indices rose 2.9% and 12.2% in June, respectively (3.2% and 10.5% in the previous month).

Figure 1

Indices of Production in Construction (2021=100)



Next Press release – 12th September 2025

Indices of Production, Employment and Wages in Construction – June 2025