

18 July 2025
 VITAL STATISTICS – MONTHLY DATA
 June 2025

MORTALITY DECREASES 0.1% IN THE FIRST HALF OF 2025 COMPARED TO THE SAME PERIOD IN 2024

In June 2025 there were 9,046 deaths, 592 less (-6.1%) than in the previous month. Compared to the same month of 2024, there was a decrease of 234 deaths (-2.5%). The number of deaths of children under 1 year of age was 17 (20 in the same month of 2024).

In the first half of the year, 62,068 deaths occurred in the national territory (50 less than in the same period in 2024), of which 104 were deaths of children under 1 year age (129 in 2024).

In May 2025 7,320 live births were registered, 305 more (+4.3%) compared to April 2025 and 203 more (+2.9%) compared to the same month of 2024.

In May 2025 the natural balance was -2,289¹, improving in relation to the same month of 2024, when it reached -2,478.

In May 2025 3,868 marriages were celebrated, 1,646 more (+74,1%) than in April 2025 and 239 more (-6.6%) than in May 2024.

In this press release, Statistics Portugal provides **preliminary data** on the number of deaths per month until June 2025², and the number of live births and marriages per month until May 2025, that occurred in the national territory. The indicators published and analyzed are available on the Official Statistics Portal (www.ine.pt), with geographical breakdowns NUTS 2 and NUTS 3. The hyperlinks to these statistics can be found in the Excel file published together with this Press Release. The information is obtained from the Sistema Integrado do Registo e Identificação Civil (SIRIC) until July 11th, 2025.

¹ The natural balance is calculated based on the difference between the number of live births of mothers residing in Portugal and the number of deaths of residents in Portugal.

² After the release of mortality data for 2022 and considering the decrease of the impact of deaths due to COVID-19 on mortality, the analysis regarding the number of deaths per week was suspended. However, the release of indicators regarding the number of weekly deaths, by NUTS 3 breakdown, until the 27th week of 2025, and daily deaths, by NUTS 2 breakdown, until July 6th, 2025, is assured.



PRESS RELEASE

1. IN JUNE 2025, THE NUMBER OF DEATHS DECREASED 2.5% COMPARED TO THE SAME MONTH OF 2024

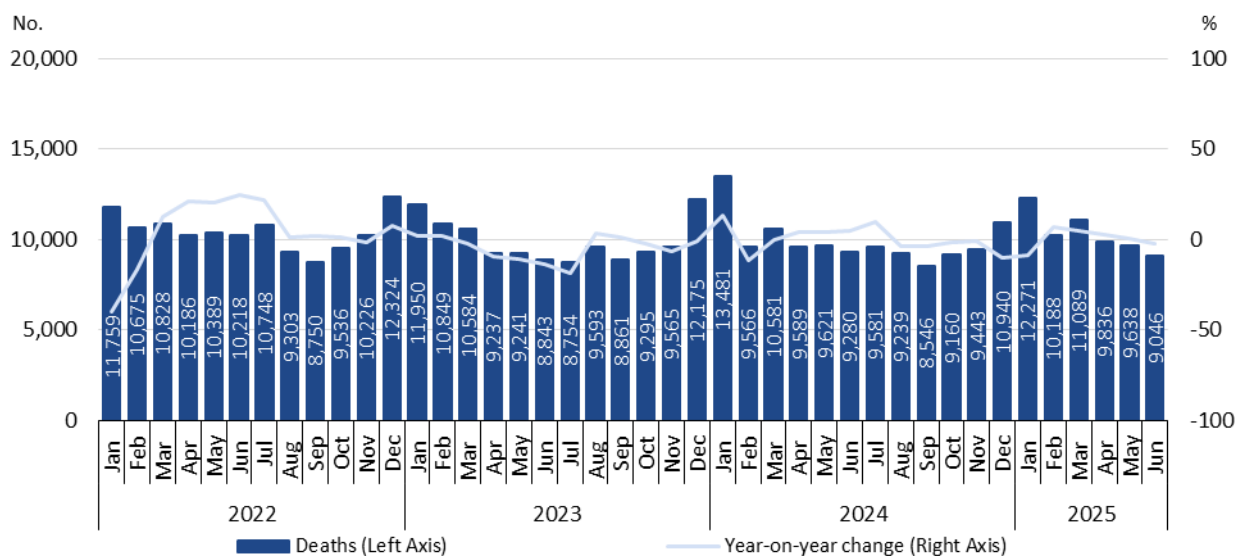
In June 2025 there were 9,046 deaths (of which 47 were from residents abroad), 592 less (-6.1%) than in the previous month. Compared to the same month of 2024, there was a decrease of 234 deaths (-2.5%).

In that month, the number of deaths of children under 1 year old was 17 (all of them born to mothers residing in Portugal), two less than in the previous month and three less compared with the same month of 2024.

In the first half of the year there were 62,068 deaths in national territory (50 less than in the same period of 2024), of which 104 were deaths of children under 1 year of age (129 in 2024).

Figure 1

DEATHS AND YEAR-ON-YEAR CHANGE, JANUARY 2022 TO JUNE 2025





PRESS RELEASE

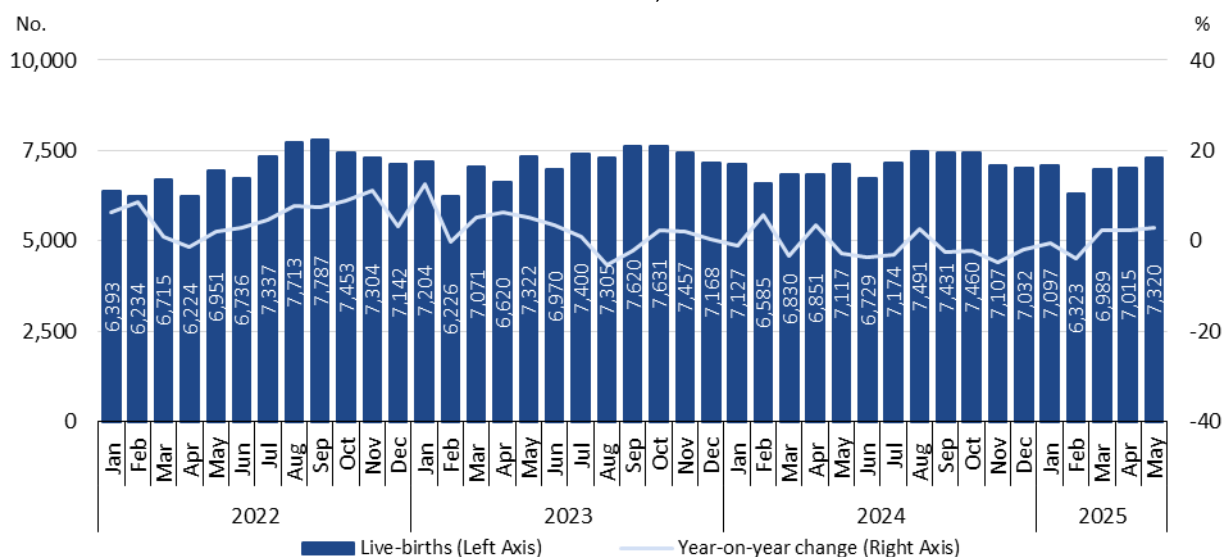
2. IN MAY 2025, THE NUMBER OF LIVE BIRTHS INCREASED 2.9% COMPARED TO MAY 2024

In May 2025 there were 7,320 live births (of which 27 were born to mothers residing abroad), corresponding to an increase of 4.3% (305 more) compared to April 2025 and to an increase of 2.9% (203 more) compared to the same month of 2024.

In the first five months of the year, 34,744 live births were registered in the country (234 more than in the same period of 2024), of which 102 were born to mothers residing abroad (130 in 2024).

Figure 2

LIVE BIRTHS AND YEAR-ON-YEAR CHANGE, JANUARY 2022 TO MAY 2025



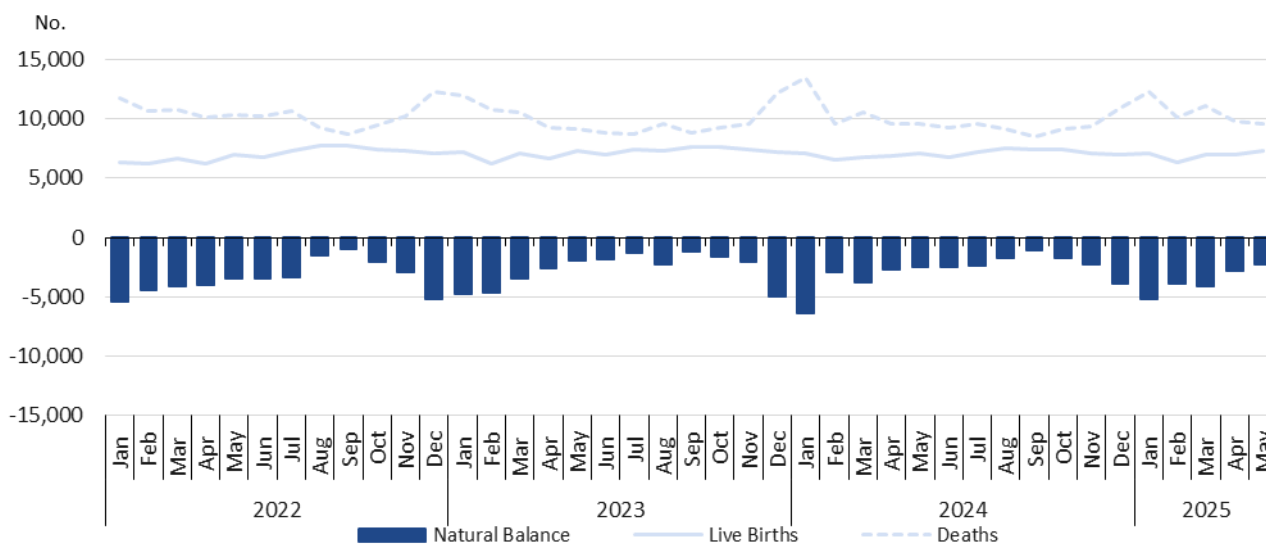
3. NATURAL BALANCE OF -2,289 IN MAY 2025

In May 2025, the natural balance registered the value of -2,289, improving compared to the figure of April 2025 (-2,784), and compared to that of the same month of 2024 (-2,478).

In the first five months of the year, the cumulative value of the natural balance was -18,153, slightly improving in relation to that registered in the same period of 2024 (-18,201).

Figure 3

LIVE BIRTHS, DEATHS, AND NATURAL BALANCE, PORTUGAL, JANUARY 2022 TO MAY 2025



Note: The natural balance is calculated based on the number of live births of mothers residing in Portugal and the number of deaths of residents in Portugal.



PRESS RELEASE



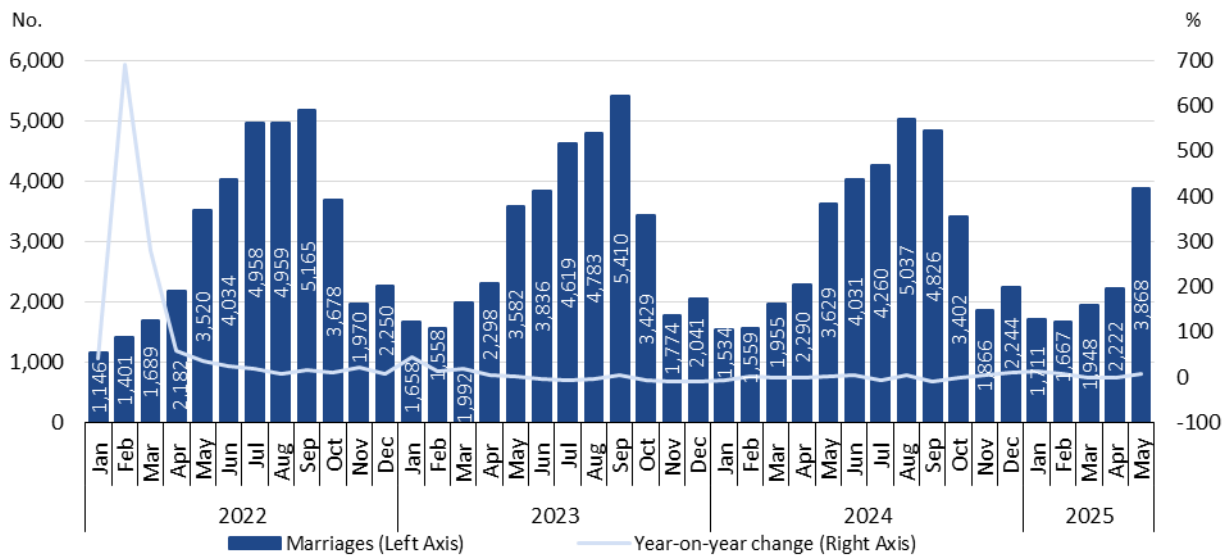
4. IN MAY 2025, THE NUMBER OF CELEBRATED MARRIAGES INCREASED 6.6% COMPARED TO MAY 2024

In May 2025, 3,868 marriages were celebrated, higher than the number registered in April 2025 (1,646 more; +74.1%), and that registered in April 2024 (239 more; +6.6%).

In the first five months of 2025, 11,416 marriages were celebrated, 449 more (+4.1%) than in the same period of 2024.

Figure 4

MARRIAGES AND YEAR-ON-YEAR CHANGE, JANUARY 2022 TO MAY 2025



TECHNICAL NOTE

Statistics Portugal releases the **preliminary** monthly **numbers** of deaths, live births, and marriages based on the information registered in the Civil Register Offices until July 11th, 2025. Indicators on the preliminary monthly number of live births, deaths, and marriages, from January 2025 to May 2025, with geographical breakdowns up to NUTS 3, by NUTS 2024, as well as weekly number of deaths, until the 27th week 2025, by NUTS 3 and daily number of deaths, until July 6th, 2025, by NUTS 2 are made available on the Statistics Portugal Website.

Data are obtained from statistical operations of direct and exhaustive collection on live births, deaths and marriages in Portuguese territory using facts that are subject to compulsory civil registration (birth and death) in the Sistema Integrado do Registo e Identificação Civil (SIRIC).

In addition to administrative information obtained from Civil Register Offices, Statistics Portugal collects an additional set of variables identified as statistically pertinent to the National Statistic System (NSS) and the European Statistical System (EES). Data is recorded and sent electronically, in compliance with the requirements set out by Statistics Portugal and laid down in liaison with the Instituto de Registos e Notariado (IRN) and the Instituto de Gestão Financeira e Equipamentos da Justiça (IGFEJ).

CONCEPTS

Marriage: Contract signed by two persons that intend to start a family in full partnership and cohabitation according to legislation. Note: marriage can be held between persons from different or same sex.

Live birth: This is the complete expulsion or extraction from the mother's body, irrespective of the duration of the pregnancy, of a product of fertilization that, after separation, breathes or shows any other signs of life, such as a beating of the heart or umbilical cord or actual contraction of any muscle subject to voluntary movement, whether the umbilical cord has been severed and whether the placenta is retained.

Death: The permanent disappearance of vital functions.

Natural balance: The difference between the number of live births and the number of deaths during a given period.

Year-on-year change: The year-on-year change compares the level of a variable between the reference month and the same month of the previous year.

Next Press Release – 14 August 2025
