



March 12th 2025

INDICES OF PRODUCTION, EMPLOYMENT AND WAGES IN CONSTRUCTION

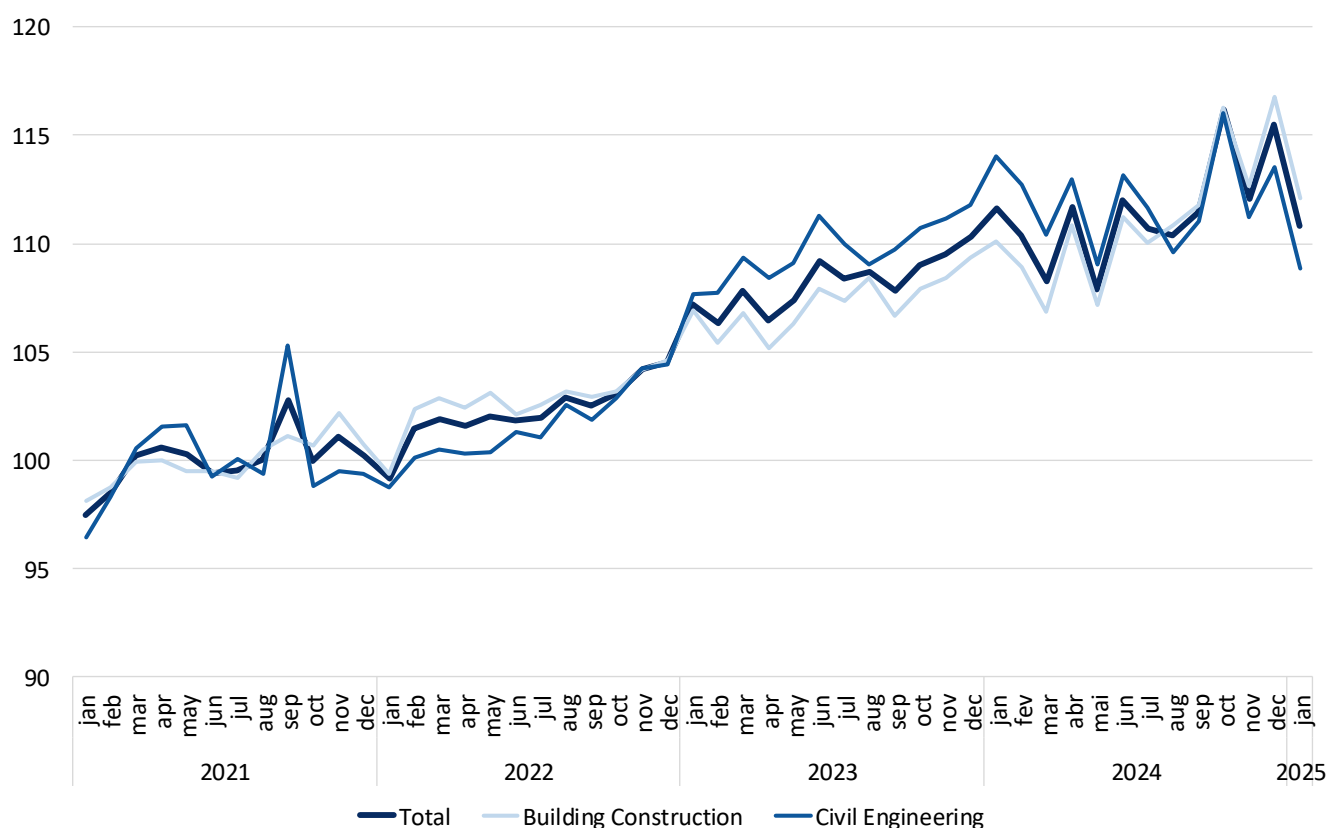
January 2025

PRODUCTION IN CONSTRUCTION GREW 2.1%

The Index of Production in Construction increased 2.1% in year-on-year terms (3-month moving average, working days and seasonally adjusted) in January, down to 2.5 percentage points from December.

The employment and wages indices rose 2.4% and 10.0% in January, respectively (3.3% and 12.7% in the previous month).

Figure 1. Indices of Production in Construction (2021=100)



Next press release – April 14th 2025