



6 January 2025
MONTHLY EMPLOYMENT AND UNEMPLOYMENT ESTIMATES
November 2024

THE UNEMPLOYMENT RATE STOOD AT 6.7% AND THE LABOUR UNDERUTILISATION RATE AT 11.0%

October 2024 (definitive estimates):

- The active population (5,468.3 thousand people) increased from the previous month (0.1%), from three months before (1.1%) and from a year earlier (1.4%).
- The employed population (5,105.5 thousand) increased from the three periods under comparison: 0.1%, 0.9% and 1.4%, respectively.
- The unemployed population (362.8 thousand) increased from September (1.2%) and from July 2024 (3.7%), as well as from October 2023 (0.8%).
- The unemployment rate stood at 6.6%, equal to September, up 0.1 percentage points (pp) from July and down 0.1 pp from October 2023.
- The inactive population (2,476.1 thousand) stood practically unchanged from the previous month, having decreased from three months before (1.7%) and from the same month of 2023 (0.2%).
- The labour underutilisation rate was estimated at 10.9%, down from the three periods under comparison: 0.1 pp, 0.3 pp and 0.7 pp.

November 2024 (provisional estimates)¹:

- The active population (5,470.9 thousand) increased from October of 2024 (2.6 thousand, which corresponded to a nearly null relative change), from August 2024 (0.6%) and from November 2023 (1.4%).
- The employed population (5,107.0 thousand) increased from the previous month (1.5 thousand, which corresponded to a nearly null relative change), from three months before (0.3%) and from one year earlier (1.3%).
- The unemployed population (363.8 thousand) increased from the three periods under comparison: 0.3%, 5.0% and 3.1%, respectively.
- The unemployment rate stood at 6.7%, up from October (0.1 pp), up from August 2024 (0.3 pp) and up from November 2023 (0.2 pp).
- The inactive population (2,484.1 thousand) increased by 0.3% from the previous month and decreased by 0.4% from three months before and by 0.3% from the same month of 2023.
- The labour underutilisation rate stood at 11.0%, up from October (0.1 pp), up from August 2024 (0.2 pp) and down from November 2023 (0.6 pp).

¹ The estimates for the last reference month (in this case, the quarter centred in November 2024: from October to December 2024) are calculated with incomplete information for the last month of the quarter (December 2024). These estimates will be revised next month (as described in the methodological note).



The table below presents the main indicators of the Monthly Employment and Unemployment Estimates.

Monthly Employment and Unemployment Estimates (16 to 74 years)

Main Indicators

	Unit	Seasonally adjusted data						
		Oct 2023	Nov 2023	Jul 2024	Aug 2024	Sep 2024	Oct 2024	Nov 2024 (p)
Active population	Thousands	5,393.4	5,393.1	5,408.1	5,436.4	5,460.8	5,468.3	5,470.9
Employed population		5,033.4	5,040.3	5,058.3	5,089.8	5,102.2	5,105.5	5,107.0
Unemployed population		360.0	352.8	349.8	346.6	358.6	362.8	363.8
Inactive population		2,481.7	2,491.4	2,517.8	2,494.3	2,475.8	2,476.1	2,484.1
Labour underutilisation		642.9	639.5	618.8	602.4	612.9	610.1	613.7
Activity rate	%	68.5	68.4	68.2	68.5	68.8	68.8	68.8
Employment rate		63.9	63.9	63.8	64.2	64.3	64.3	64.2
Unemployment rate		6.7	6.5	6.5	6.4	6.6	6.6	6.7
Inactivity rate		31.5	31.6	31.8	31.5	31.2	31.2	31.2
Labour underutilisation rate		11.6	11.6	11.2	10.8	11.0	10.9	11.0

Source: Statistics Portugal, Labour Force Survey.

Note: (p) – Provisional estimates.

In **October 2024**, the active population increased from the previous month (7.5 thousand people; 0.1%) due to the increase of the employed population (3.3 thousand; 0.1%) and of the unemployed population (4.2 thousand; 1.2%). The inactive population remained practically unchanged due to the increase in the number of other inactive persons, those not searching for a job nor available to work (9.7 thousand; 0.4%), which compensated the decrease in the number of inactive persons searching for a job, but not available to work (6.8 thousand; 22.5%), and in the number of inactive persons available to work, but not looking for a job (2.8 thousand; 3.0%).

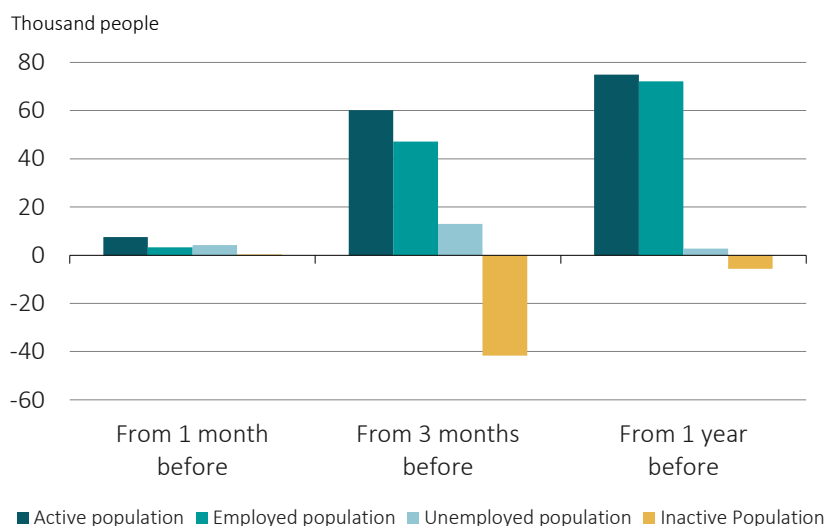
From three months before, the active population increased by 60.2 thousand (1.1%) due to the increase of 47.2 thousand (0.9%) in the employed population and of 13.0 thousand (3.7%) in the unemployed population. The inactive population decreased by 41.7 thousand people (1.7%) due to the decrease in all population groups that comprise it, especially that of other inactive persons (16.7 thousand; 0.7%) and that of inactive persons searching for a job but not available to work (16.3 thousand; 41.0%).

Compared to October 2023, the active population increase of 74.9 thousand people (1.4%) resulted from the increase observed in both the employed population (72.1 thousand; 1.4%) and the unemployed population (2.8 thousand; 0.8%). The inactive population decreased by 5.6 thousand (0.2%) due, mainly, to the decrease in the number of inactive persons available to work, but not looking for a job (20.2 thousand; 18.7%).

These results determined the following changes in the unemployment rate, which stood at 6.6% in October 2024: same value as in September, up from July 2024 (0.1 pp) and down from October 2023 (0.1 pp).



Figure 1. Change in the active, employed, unemployed and inactive population in October 2024
(seasonally adjusted data)



Also in October 2024, labour underutilisation covered 610.1 thousand people, down from the previous month (2.8 thousand; 0.5%), down from three months before (8.7 thousand; 1.4%) and down from the same month of 2023 (32.8 thousand; 5.1%). Similarly, the labour underutilisation rate, estimated at 10.9%, has also decreased from the three periods under comparison: 0.1 pp, 0.3 pp and 0.7 pp.

In **November 2024**, compared to the previous month, the active population increased by 2.6 thousand people (which represented a nearly null relative change) and the inactive population increased by 8.0 thousand (0.3%). The active population variation resulted from the increase of 1.5 thousand people (which represented a nearly null relative change) in the employed population and of 1.0 thousand (0.3%) in the unemployed population. The change of the inactive population was mostly the result of the increase in the number of other inactive persons, those not searching for a job nor available to work (8.9 thousand; 0.4%).

The increase observed in the active population compared to three months before (34.5 thousand; 0.6%) resulted from the increase of the employed population (17.2 thousand; 0.3%) and of the unemployed population (17.2 thousand; 5.0%). The decrease of the inactive population (10.2 thousand; 0.4%) was due, essentially, to the decrease in the number of inactive persons looking for a job, but not available to work (12.4 thousand; 37.7%).

The active population increased by 77.8 thousand (1.4%) from November 2023 following the increase of the employed population (66.7 thousand; 1.3%) and of the unemployed population (11.0 thousand; 3.1%). The inactive population decreased by 7.3 thousand (0.3%) due to the decrease in the number of inactive persons available to work, but not looking for a job (19.5 thousand; 17.9%), and in the number of inactive persons looking for a job, but not available to work (11.3 thousand; 35.5%), which surpassed the increase in the number of other inactive persons (23.6 thousand; 1.0%).



These results determined the following changes in the unemployment rate, which stood at 6.7% in November 2024: up from October (0.1 pp), up from August 2024 (0.3 pp) and up from November 2023 (0.2 pp).

Figure 2. Change in the active, employed, unemployed and inactive population in November 2024
(seasonally adjusted data)



Note: The November 2024 estimates are provisional.

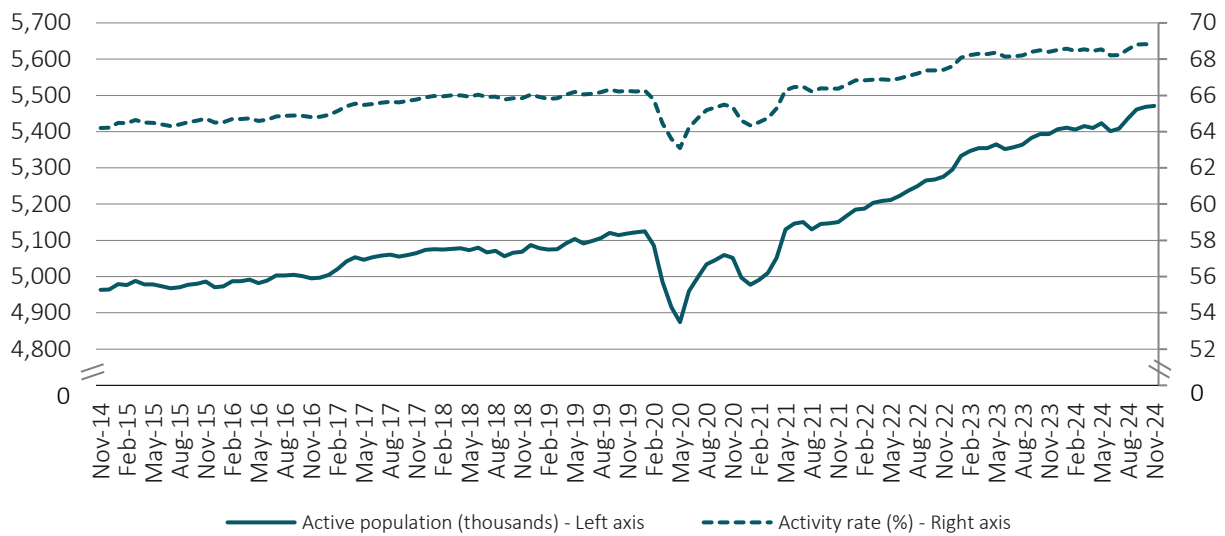
Also in November 2024, labour underutilisation covered 613.7 thousand people, up from the previous month (3.6 thousand; 0.6%) and from three months before (11.3 thousand; 1.9%), but down from one year earlier (25.8 thousand; 4.0%). The labour underutilisation rate – estimated at 11.0% – increased from October and August 2024 (0.1 pp and 0.2 pp, respectively) and decreased from November 2023 (0.6 pp).



The following figures show the evolution in the last 10 years of the main indicators analysed in this Press Release. In November 2024, the active population (5,470.9 thousand) totalled its highest value since the beginning of the series starting in February 1998. Similarly, the employed population, estimated at 5,107.0 thousand, as also reached its highest value.

Figure 3. Active population and activity rate

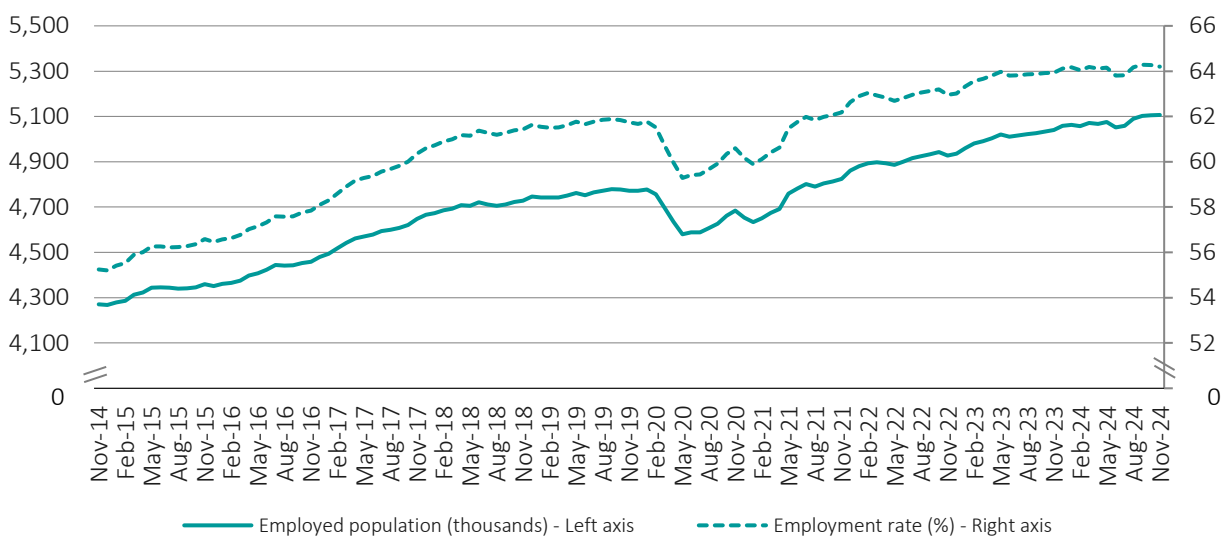
(seasonally adjusted data)



Note: The November 2024 estimates are provisional.

Figure 4. Employed population and employment rate

(seasonally adjusted data)

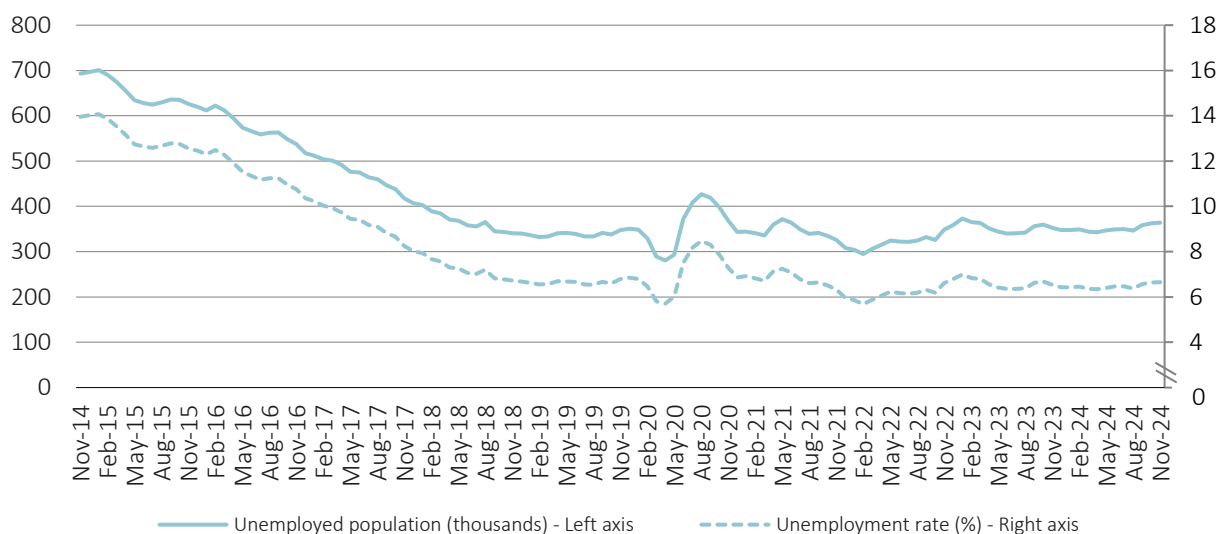


Note: The November 2024 estimates are provisional.



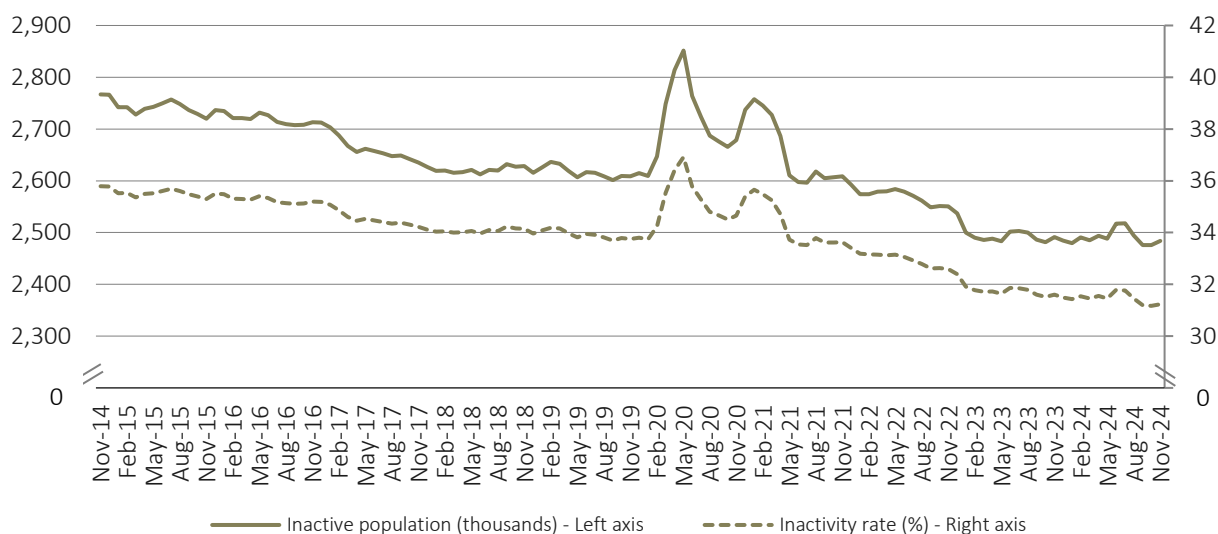
In November 2024, the unemployment rate stood at 6.7%, which is the highest value since October 2023 when this value was matched. In November 2024, the inactivity rate remained at 31.2%, the lowest value since the beginning of the time series.

Figure 5. Unemployed population and unemployment rate
(seasonally adjusted data)



Note: The November 2024 estimates are provisional.

Figure 6. Inactive population and inactivity rate
(seasonally adjusted data)

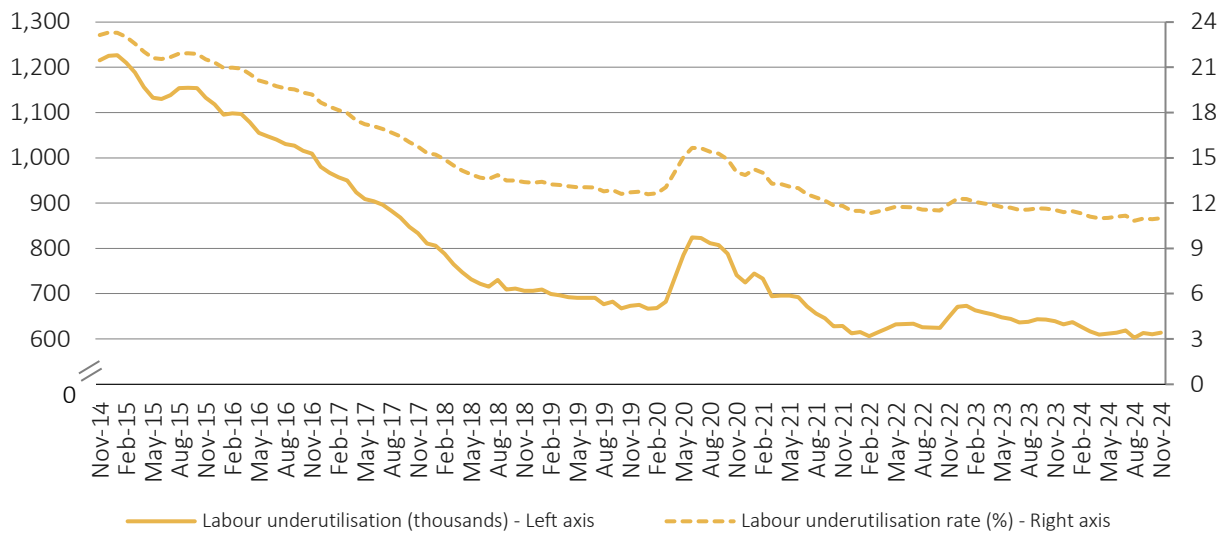


Note: The November 2024 estimates are provisional.



In November 2024, the labour underutilisation covered 613.7 thousand people, more than in August of the same year (602.4 thousand), which corresponded to the lowest value since February 2011, when its analysis began. The labour underutilisation rate was estimated at 11.0% for the fourth time since April 2024.

Figure 7. Labour underutilisation and labour underutilisation rate
(seasonally adjusted data)



Note: The November 2024 estimates are provisional.



Criteria used when classifying the population aged 16 to 74 by labour status

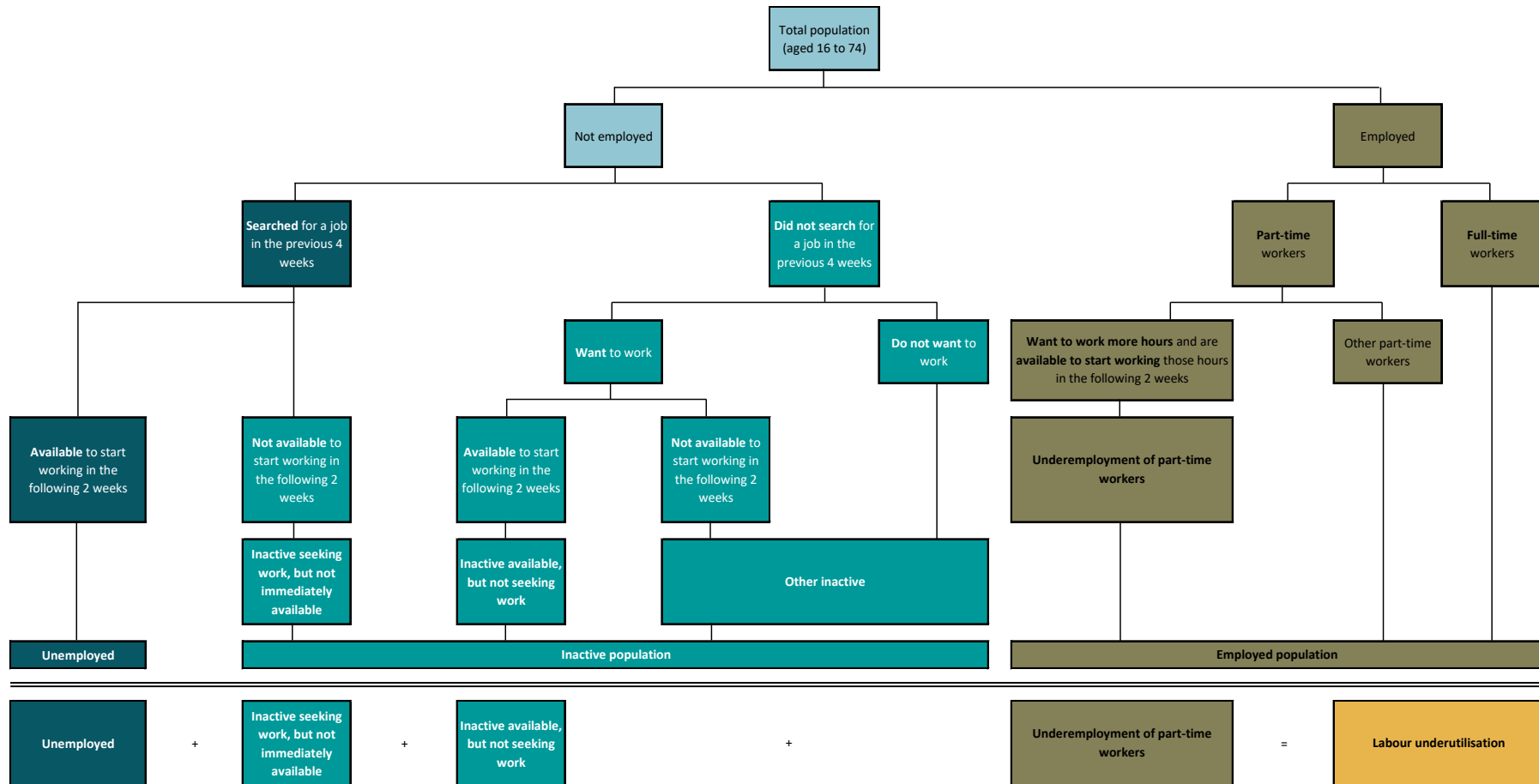




Table 1: Active population and activity rate by sex and age group (16 to 74 years)

	Seasonally adjusted data					Not seasonally adjusted data				
	Nov 2023	Aug 2024	Sep 2024	Oct 2024	Nov 2024 (p)	Nov 2023	Aug 2024	Sep 2024	Oct 2024	Nov 2024 (p)
	Thousands									
Active population	5,393.1	5,436.4	5,460.8	5,468.3	5,470.9	5,409.4	5,449.0	5,474.2	5,487.5	5,487.3
Men	2,717.7	2,747.8	2,754.4	2,758.6	2,748.8	2,726.6	2,758.2	2,764.9	2,769.2	2,757.7
Women	2,675.4	2,688.6	2,706.4	2,709.6	2,722.1	2,682.8	2,690.8	2,709.2	2,718.3	2,729.6
Youth (aged 16 to 24)	383.6	368.0	377.0	387.6	394.6	386.2	382.4	387.8	395.2	397.2
Adults (aged 25 to 74)	5,009.5	5,068.5	5,083.8	5,080.7	5,076.2	5,023.3	5,066.6	5,086.4	5,092.3	5,090.0
	%									
Activity rate	68.4	68.5	68.8	68.8	68.8	68.6	68.7	69.0	69.1	69.0
Men	71.4	71.8	71.9	72.0	71.6	71.6	72.1	72.2	72.3	71.8
Women	65.6	65.5	65.9	65.9	66.1	65.8	65.6	66.0	66.1	66.3
Youth (aged 16 to 24)	39.2	37.6	38.5	39.6	40.2	39.4	39.0	39.6	40.3	40.5
Adults (aged 25 to 74)	72.5	72.9	73.1	73.0	72.8	72.7	72.9	73.1	73.1	73.0

Source: Statistics Portugal, Labour Force Survey.

Note: (p) – Provisional estimates.

Table 2: Employed population and employment rate by sex and age group (16 to 74 years)

	Seasonally adjusted data					Not seasonally adjusted data				
	Nov 2023	Aug 2024	Sep 2024	Oct 2024	Nov 2024 (p)	Nov 2023	Aug 2024	Sep 2024	Oct 2024	Nov 2024 (p)
	Thousands									
Employed population	5,040.3	5,089.8	5,102.2	5,105.5	5,107.0	5,050.7	5,114.4	5,118.9	5,121.6	5,117.5
Men	2,546.0	2,578.8	2,580.8	2,582.9	2,569.7	2,552.3	2,598.4	2,598.1	2,595.8	2,576.0
Women	2,494.3	2,511.0	2,521.4	2,522.6	2,537.4	2,498.4	2,516.0	2,520.8	2,525.8	2,541.5
Youth (aged 16 to 24)	292.0	294.0	295.3	302.0	309.9	292.9	307.1	303.0	305.5	310.8
Adults (aged 25 to 74)	4,748.3	4,795.8	4,806.9	4,803.5	4,797.1	4,757.9	4,807.3	4,815.9	4,816.1	4,806.7
	%									
Employment rate	63.9	64.2	64.3	64.3	64.2	64.1	64.5	64.5	64.5	64.3
Men	66.9	67.4	67.4	67.4	66.9	67.1	67.9	67.8	67.7	67.1
Women	61.2	61.2	61.4	61.4	61.6	61.3	61.3	61.4	61.4	61.7
Youth (aged 16 to 24)	29.8	30.0	30.2	30.8	31.6	29.9	31.4	30.9	31.2	31.7
Adults (aged 25 to 74)	68.8	69.0	69.1	69.0	68.8	68.9	69.2	69.2	69.2	68.9

Source: Statistics Portugal, Labour Force Survey.

Note: (p) – Provisional estimates.



Table 3: Unemployed population and unemployment rate by sex and age group (16 to 74 years)

	Seasonally adjusted data					Not seasonally adjusted data				
	Nov 2023	Aug 2024	Sep 2024	Oct 2024	Nov 2024 (p)	Nov 2023	Aug 2024	Sep 2024	Oct 2024	Nov 2024 (p)
	Thousands									
Unemployed population	352.8	346.6	358.6	362.8	363.8	358.7	334.7	355.3	365.8	369.8
Men	171.7	169.0	173.7	175.7	179.1	174.3	159.8	166.8	173.3	181.7
Women	181.1	177.6	185.0	187.0	184.7	184.4	174.9	188.5	192.5	188.1
Youth (aged 16 to 24)	91.6	73.9	81.7	85.6	84.8	93.3	75.4	84.8	89.6	86.4
Adults (aged 25 to 74)	261.1	272.7	276.9	277.2	279.1	265.4	259.3	270.4	276.2	283.4
	%									
Unemployment rate	6.5	6.4	6.6	6.6	6.7	6.6	6.1	6.5	6.7	6.7
Men	6.3	6.2	6.3	6.4	6.5	6.4	5.8	6.0	6.3	6.6
Women	6.8	6.6	6.8	6.9	6.8	6.9	6.5	7.0	7.1	6.9
Youth (aged 16 to 24)	23.9	20.1	21.7	22.1	21.5	24.2	19.7	21.9	22.7	21.8
Adults (aged 25 to 74)	5.2	5.4	5.4	5.5	5.5	5.3	5.1	5.3	5.4	5.6

Source: Statistics Portugal, Labour Force Survey.

Note: (p) – Provisional estimates.

Table 4: Inactive population and inactivity rate by sex and age group (16 to 74 years)

	Seasonally adjusted data					Not seasonally adjusted data				
	Nov 2023	Aug 2024	Sep 2024	Oct 2024	Nov 2024 (p)	Nov 2023	Aug 2024	Sep 2024	Oct 2024	Nov 2024 (p)
	Thousands									
Inactive population	2,491.4	2,494.3	2,475.8	2,476.1	2,484.1	2,475.1	2,481.7	2,462.5	2,456.8	2,467.7
Men	1,088.4	1,079.2	1,075.2	1,074.1	1,089.4	1,079.5	1,068.8	1,064.7	1,063.6	1,080.5
Women	1,403.0	1,415.1	1,400.6	1,401.9	1,394.7	1,395.5	1,412.9	1,397.8	1,393.3	1,387.1
Youth (aged 16 to 24)	595.5	611.5	602.5	592.4	586.3	593.0	597.1	591.7	584.8	583.7
Adults (aged 25 to 74)	1,895.9	1,882.8	1,873.4	1,883.7	1,897.8	1,882.1	1,884.7	1,870.8	1,872.0	1,884.0
	%									
Inactivity rate	31.6	31.5	31.2	31.2	31.2	31.4	31.3	31.0	30.9	31.0
Men	28.6	28.2	28.1	28.0	28.4	28.4	27.9	27.8	27.7	28.2
Women	34.4	34.5	34.1	34.1	33.9	34.2	34.4	34.0	33.9	33.7
Youth (aged 16 to 24)	60.8	62.4	61.5	60.4	59.8	60.6	61.0	60.4	59.7	59.5
Adults (aged 25 to 74)	27.5	27.1	26.9	27.0	27.2	27.3	27.1	26.9	26.9	27.0

Source: Statistics Portugal, Labour Force Survey.

Note: (p) – Provisional estimates.



Table 5: Labour underutilisation and labour underutilisation rate (16 to 74 years)

	Seasonally adjusted data					Not seasonally adjusted data				
	Nov 2023	Aug 2024	Sep 2024	Oct 2024	Nov 2024 (p)	Nov 2023	Aug 2024	Sep 2024	Oct 2024	Nov 2024 (p)
	Thousands									
Labour underutilisation	639.5	602.4	612.9	610.1	613.7	645.7	585.4	603.0	612.6	626.4
Unemployed population	352.8	346.6	358.6	362.8	363.8	358.7	334.7	355.3	365.8	369.8
Underemployed part-time workers	145.6	133.4	133.6	136.2	139.5	149.6	123.4	124.2	138.0	149.5
Persons seeking work but not immediately available	31.9	33.0	30.1	23.3	20.6	31.9	33.0	30.1	23.3	20.6
Persons available to work but not seeking	109.2	89.4	90.6	87.8	89.7	105.5	94.4	93.4	85.4	86.6
	%									
Labour underutilisation rate	11.6	10.8	11.0	10.9	11.0	11.6	10.5	10.8	10.9	11.2

Source: Statistics Portugal, Labour Force Survey.

Note: (p) – Provisional estimates.



METHODOLOGICAL NOTE

LABOUR FORCE SURVEY

The main purpose of the Labour Force Survey is to classify the population in terms of their participation in the labour market. It is a quarterly sample survey, addressed to all persons living in the national territory.

Most of the characteristics observed in this survey report to the situation in one pre-defined week (from Monday to Sunday), known as reference week. The reference weeks are uniformly distributed throughout the quarters and years. The interviews usually take place in the week following the reference week.

The information is obtained directly, through computer-assisted interview by using a mixed data collection mode: the initial interview is done face-to-face by an interviewer visiting the household and the other five interviews are done by telephone if certain requirements are met. However, it should be noted that, following the COVID-19 pandemic and the measures adopted by the competent authorities, Statistics Portugal has decided, between the first fortnight of March 2020 and the end of the 2nd quarter of 2022, to suspend the face-to-face collection mode, replacing it exclusively with telephone interviews. After analysing the impact of this suspension, Statistics Portugal decided to incorporate the variable "completed level of education" into the process of calibrating the individual weights of the samples for the 2nd quarter of 2020 to the 3rd quarter of 2023, in addition to the information usually used (monthly estimates of the resident population by sex, age group and region).²

The weights of the Monthly Employment and Unemployment Estimates for the months of February 1998 to January 2011 were calibrated with reference to the independent estimates of the resident population calculated from the final results of the 2011 Census, while the weights for the months of February 2011 onwards were calibrated with reference to the independent estimates of the resident population calculated from the final results of the 2021 Census.

MONTHLY EMPLOYMENT AND UNEMPLOYMENT ESTIMATES

In 2014, Statistics Portugal initiated a monthly release of Labour Force Survey estimates for the main labour market indicators in addition to the usual quarterly estimates' releases.

With this initiative, Statistics Portugal intends to provide to users monthly updated information on labour market recent developments, allowing, at the same time, a more complete reading picture than that provided so far by Eurostat in its monthly releases of the unemployed population and unemployment rate estimates for Portugal. With this dissemination, Statistics Portugal also satisfies a specific requirement from the PEEs (Principal European Economic Indicators).

² For more information, see the "[Methodological note on the revision of the Labour Force Survey data: the context of the COVID-19 pandemic](#)", published on 8 November 2023 together with the Press Release "Employment Statistics – 3rd quarter of 2023".



Taking advantage of the continuous nature of the Labour Force Survey collection process, it is possible to monthly obtain estimates related to successive sets of three months (moving quarters), assuring consistency with the quarterly released estimates.

The monthly estimates refer to centred moving quarters, where the reference month (m) corresponds to the central month of each moving quarter. In fact, the reference month of each Press Release corresponds to the central month of the quarter composed by m-1, m and m+1 months. Therefore, the monthly changes are calculated on values that contain common months. Therefore, the comparison of moving quarters without common months should be done in relation to reference months three months earlier.

The option for disseminating centred moving quarters series aimed at avoiding delays in the detection of turning points in the economic cycle that arise from the use of simple moving averages, but it implies that the estimates for the latest released moving quarter are provisional (see “Revisions” section below).

As estimates of centred moving quarters, the values (not seasonally adjusted) of the reference months February, May, August, and November of each year correspond to the estimates of the 1st, 2nd, 3rd, and 4th natural quarters, respectively, whose results are published and analysed with greater detail in the quarterly releases of the Labour Force Survey estimates.

The estimates for the last reference month are always provisional, as they correspond to a moving quarter where for the third month the data collection is not completed yet. In fact, for the first two months (m-1 and m) the data collection from the Labour Force Survey is already completed, while for the third month (m+1) only partially collected data are available.

In this context, in each monthly Press Release the provisional estimates for the reference month and the revised estimates for the previous months are published, due the availability of complete information for the last moving quarter.

INFORMATION AVAILABLE

The data series selected for monthly releases refer to both employed and unemployed population, by sex and age group, and to the corresponding rates. In relation to these data series, it should be noted the following:

- Unless otherwise stated, the data series analysed in this Press Release are seasonally adjusted. For this reason, the analysis focuses on the comparison with the most recent periods. As agreed, Eurostat started using these estimates in its unemployment monthly releases. The original data series (not seasonally adjusted; as in the Statistics Portugal quarterly releases), are available in Tables of the annex.
- The indicators analysed in this Press Release were calculated for the age subgroup of those aged 16 to 74 (as in the Eurostat News Release), which differs from the criterion adopted at the Statistics Portugal quarterly releases (people aged 16 to 89, in line with the concepts in force of the International Labour Organization).

The back series for all the released and analysed indicators in this Press Release, since February 1998 (quarter from January to March 1998), are available at Statistics Portugal website and the links to them can be found in the Excel file released together with this Press Release.

Due to rounding, totals may not correspond exactly to the sum of the parts.



REVISIONS

The monthly released data are subject to regular revisions, as previously mentioned. The revisions come from obtaining the final estimates for the previous reference month (moving quarter) due to the conclusion of its last month collection process. Therefore, in each Press Release the not seasonally adjusted final estimates for the previous reference month are published. In addition, are also presented the final estimates resulting from updating of the seasonally adjusted data series whenever a new observation is added.

Revision of October 2024 estimates (16 to 74) - main indicators -			
	Unit	Seasonally adjusted data	Not seasonally adjusted data
Active population		4.7	5.0
Employed population		- 0.2	0.4
Unemployed population	Thousands	4.9	4.6
Inactive population		- 4.6	- 5.1
Labour underutilisation		10.8	8.3
Employment rate		0.0	0.0
Unemployment rate		0.0	0.1
Men's unemployment rate		0.1	0.1
Women's unemployment rate	pp	0.0	0.1
Youth unemployment rate (16 to 24)		0.2	0.3
Adults' unemployment rate (25 to 74)		0.1	0.0
Labour underutilisation rate		0.1	0.1

SOME CONCEPTS

Unemployed: person aged 16 and 74 who during the reference period met simultaneously the following conditions:

- neither had a job nor was at work;
- had actively sought work, i.e., had actively searched for a paid or unpaid job during the specified period (reference period or the three previous weeks); and
- was available for a paid or unpaid job.

Employed: person aged 16 to 89 who, during the reference period, was in one of the following situations:

- worked for at least one hour for a wage or salary, in cash or in kind (including unpaid family work);
- had a formal attachment to his/her job but was not at work temporarily;
- was in early retirement but working in the reference week.

Working age resident population: Resident population aged 16 to 89.



Active: person aged 16 to 89 who, during the reference period, furnish the supply of labour force for the production of economic goods and services (was employed or unemployed).

Labour force: population formed by all active persons.

Extended labour force: corresponds to the labour force enlarged by the inactive seeking work but not immediately available and the inactive available but not seeking work.

Labour underutilisation: indicator that aggregates the unemployed population, the underemployment of part-time workers, the inactive seeking work but not immediately available, and the inactive available but not seeking work.

Unemployment rate: rate that defines the relation between the unemployed population and the labour force.

$$\text{U.R. (\%)} = (\text{Unemployed population} / \text{Labour force}) \times 100$$

Employment rate: rate that defines the relation between the employed population and the working age population.

$$\text{E.R. (\%)} = (\text{Employed population} / \text{Working age population}) \times 100$$

Activity rate of the working age population: rate that defines the relation between the labour force and the working age population.

$$\text{A.R. (\%)} = (\text{Labour force} / \text{Working age population}) \times 100$$

Inactivity rate of the working age population: rate that defines the relation between the working age inactive population and the working age population.

$$\text{I.R. (\%)} = (\text{Working age inactive population} / \text{Working age population}) \times 100$$

Labour underutilisation rate: rate that defines the relation between the labour underutilisation and the extended labour force.

$$\text{L.U.R. (\%)} = (\text{Labour underutilisation} / \text{Extended labour force}) \times 100$$

For the indicators selected for monthly dissemination, it was considered the age subgroup of those aged 16 to 74.



INSTITUTO NACIONAL DE ESTATÍSTICA
STATISTICS PORTUGAL

press release

DIÁSTAKE

For a more detailed definition of the concepts and methodological features of this statistical operation, consult the [Labour Force Survey](#) or the Monthly Employment and Unemployment Estimates methodological documents (both only in Portuguese and the latter currently being updated) available at <https://smi.ine.pt/> (tab Methodological documentation; theme “Labour market”).

Next Press Release

29 January 2025: “Monthly Employment and Unemployment Statistics – December 2024”.

30 January 2025: Eurostat News Release.
