



December 11th, 2024
TRANSPORT ACTIVITIES
Air Transport Flash Statistics
October 2024

MOVEMENT OF PASSENGERS AT NATIONAL AIRPORTS DECELERATED, DESPITE MAINTAINING THE TREND OF MONTHLY HIGHS

In **October 2024**, 6.5 million passengers and 24.0 thousand tonnes of freight and mail were handled at national airports, corresponding to year-on-year variations of +2.9% and +17.7%, respectively, compared with October 2023 (+3.6% and +17.2% in the previous month, in the same order).

Between January and October of 2024 there were historic monthly highs of passengers at national airports. In October 2024, there was a daily average of 103.7 thousand passengers disembarked, 2.5% higher value than the one registered in October 2023 (101.2 thousand).

Between **January and October of 2024**, the number of passengers handled increased by 4.2% (+20.6% in 2023) and the movement of freight and mail increased by 15.2% (-1.7% in 2023).

The United Kingdom was the main country of origin and destination of flights, having recorded increases in the number of disembarked (+1.6%) and embarked (+1.3%) passengers compared with the same period of 2023. France and Spain ranked 2nd and 3rd as the main countries of origin and destination.

Consult the information on the [Interactive Platform](#) (available only in Portuguese).

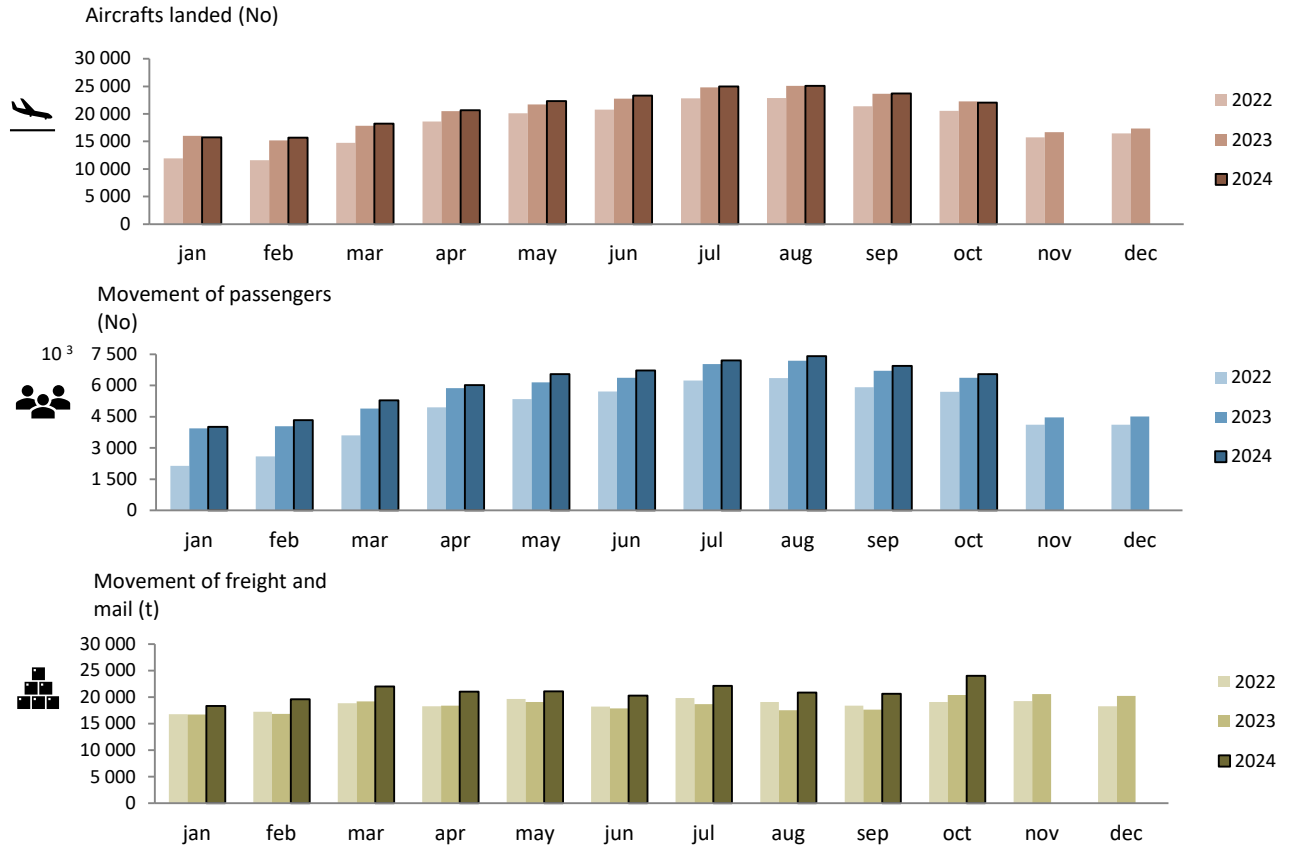
Monthly traffic at national airports

In **October 2024**, 22.0 thousand commercial aircrafts landed at national airports, corresponding to 6.5 million passengers (embarked, disembarked and direct transits) and 24.0 thousand tonnes of freight and mail were handled (-1.1%, +2.9% and +17.7%, respectively, compared with October 2023). In the previous month there were variations of +0.3%, +3.6% and +17.2%, in the same order.



DIÍSTAQUE

Figure 1. Aircrafts landed, passengers and freight/mail movement at national airports



Source: Survey to airports and aerodromes (ANA/ANAC/Statistics Portugal)

In October 2024, 82.7% of passengers disembarked at national airports corresponded to international traffic, reaching 2.7 million passengers (+2.4%¹), mostly from the European continent (70.1% of the total), corresponding to an increase of 1.2% compared with October 2023. The American continent was the second main origin, concentrating 8.5% of the total passengers disembarked (+6.3%).

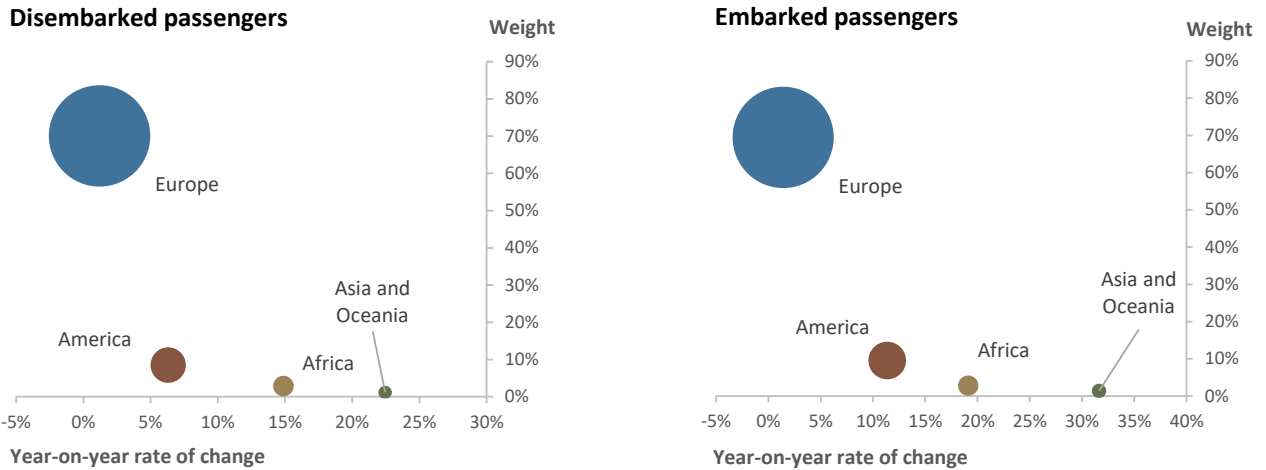
Regarding embarked passengers, 83.3% corresponded to international traffic, totalling 2.8 million passengers (+3.4%), having 69.5% of the total as main destination airports in the European continent, recording an increase of 1.4% compared with October 2023. Airports in the American continent were the second main destination of embarked passengers (9.6% of the total; +11.4%).

¹ Unless stated otherwise, the rates of change presented in this press release correspond to year-on-year rates of change.



DIISTAQUE

Figure 2. Passengers disembarked and embarked at national airports by nature at international traffic, by Continent of origin/destination – October 2024

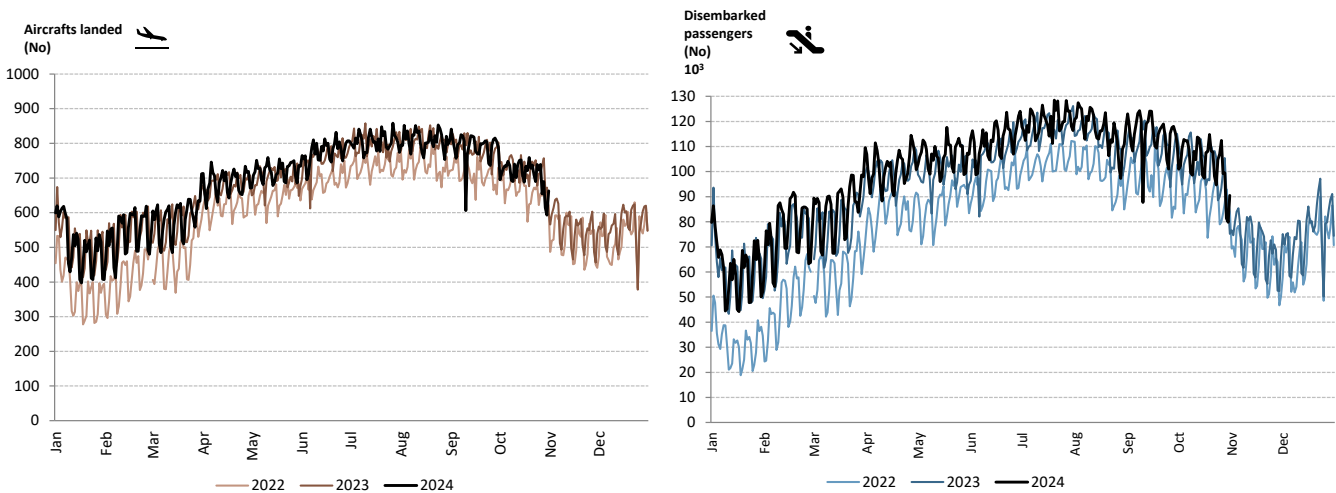


Source: Survey to airports and aerodromes (ANA/ANAC/Statistics Portugal)

The daily movement of aircrafts and passengers is typically influenced by seasonal and weekly cycle fluctuations. The highest daily values are generally recorded during the summer period and, last year, Saturday was the day of the week with the highest number of disembarked passengers.

Between January and October of 2024 there were historic monthly highs of passengers at national airports. In October 2024, there was a daily average of 103.7 thousand passengers disembarked, 2.5% higher value than the one registered in October 2023 (101.2 thousand).

Figure 3. Aircrafts landed and disembarked passengers at national airports – daily



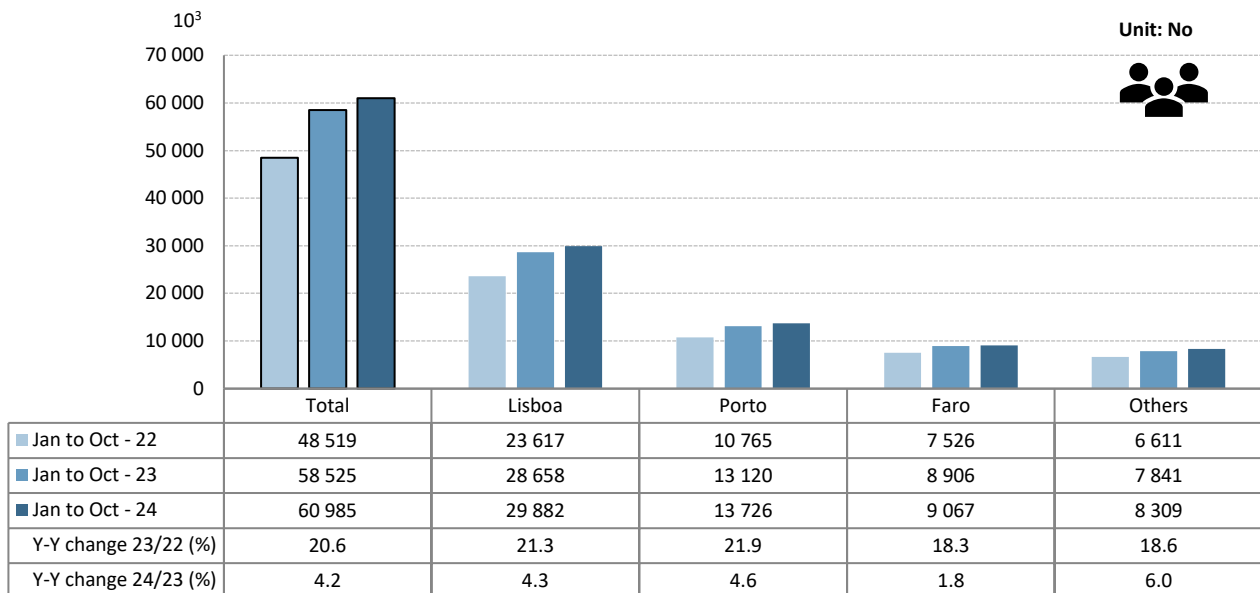
Source: Survey to airports and aerodromes (ANA/ANAC/Statistics Portugal)



Accumulated traffic at national airports

Between **January and October of 2024**, the movement of passengers at national airports increased by 4.2% compared with the same period of 2023 (+20.6% in 2023). The movement of passengers in Lisboa airport corresponded to 49.0% of total handled passengers (29.9 million; +4.3% compared with the same period of 2023). Porto airport accounted for 22.5% of total passengers handled (13.7 million; +4.6%). Faro airport recorded an increase of 1.8% in the movement of passengers, totalling 9.1 million.

Figure 4. Movement of passengers at national airports



Source: Survey to airports and aerodromes (ANA/ANAC/Statistics Portugal)

Considering the volume of passengers disembarked and embarked on international flights between January and October of 2024, the United Kingdom was the main country of origin and destination of flights, having recorded increases in the number of disembarked (+1.6%) and embarked (+1.3%) passengers compared with the same period of 2023. In the opposite direction, France recorded decreases in the number of disembarked (-3.6%) and embarked passengers (-3.8%), and occupied the 2nd position. Spain, Germany and Italy ranked 3rd, 4th and 5th, respectively, as the main countries of origin and destination.



Table 1. Main countries of origin and destination of flights with passengers at national airports

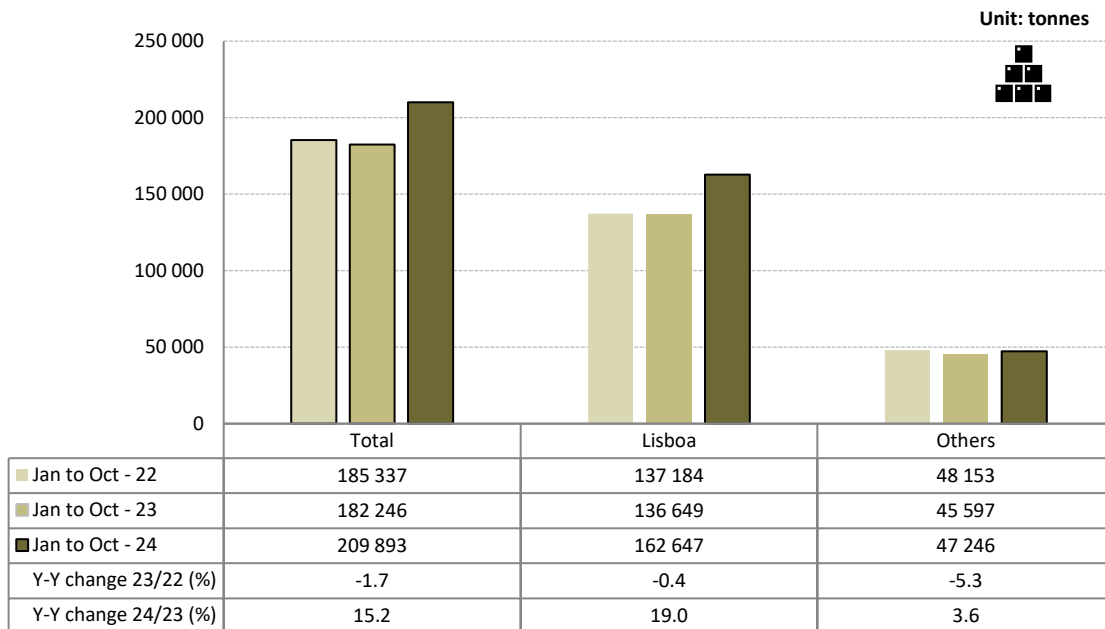
Ranking	Country of origin (of the flight)	Unit: No		Ranking	Country of destination (of the flight)	Unit: No	
		Jan to Oct 2024				Jan to Oct 2024	
		Passengers disembarked (10 ³)	Y-on-Y change (%)			Passengers embarked (10 ³)	Y-on-Y change (%)
1	United Kingdom	4 290.3	1.6	1	United Kingdom	4 276.1	1.3
2	France	3 674.2	-3.6	2	France	3 647.5	-3.8
3	Spain	3 129.9	3.0	3	Spain	3 071.5	3.0
4	Germany	2 233.5	5.8	4	Germany	2 241.1	5.9
5	Italy	1 406.8	3.8	5	Italy	1 406.6	4.9

Source: Survey to airports and aerodromes (ANA/ANAC/Statistics Portugal)

Between January and October of 2024, there was an increase of 15.2% in freight and mail handled at national airports (-1.7% in 2023). The movement of freight and mail at Lisboa airport represented 77.5% of the total, corresponding to 162.6 thousand tonnes (+19.0% compared with the same period of 2023).

Considering the group of other airports, the movement of freight and mail increased by 3.6%.

Figure 5. Freight and mail movement at national airports



Source: Survey to airports and aerodromes (ANA/ANAC/Statistics Portugal)



INSTITUTO NACIONAL DE ESTATÍSTICA
STATISTICS PORTUGAL

press release



METHODOLOGICAL NOTES

In this Press Release the following statistical data are used:

2024: preliminary results;

2022 and 2023: definitive results.

Main national airports (considered in this Press Release as national airports): Lisboa, Porto, Faro, Ponta Delgada, Madeira, Porto Santo, Beja, Horta, Flores, Santa Maria, Terceira, Pico, Graciosa, São Jorge, Corvo, Portimão, Bragança, Cascais, Vila Real and Viseu.

SOURCES: Survey to airports and aerodromes (ANA/ANAC/Statistics Portugal)

MAIN CONCEPTS:

Commercial aviation - Air transport flight performed for the public transport of passengers, freight or mail, for remuneration and for hire.

Commercial air traffic - Movement of aircrafts, passengers, freight and mail in commercial aviation.

INTERACTIVE PLATFORM AT STATISTICS PORTUGAL:

[Interactive Platform](#) (available only in Portuguese)

Monthly indicators at Statistics Portugal portal:

[Aircrafts landed \(No.\) in airports by Geographic localization, Type of traffic and Nature of traffic; Monthly](#)

[Aircrafts landed \(No.\) in airports by Continent of origin; Monthly](#)

[Aircrafts take-offs \(No.\) in airports by Geographic localization, Type of traffic and Nature of traffic; Monthly](#)

[Disembarked passengers \(No.\) in airports by Geographic localization, Type of traffic and Nature of traffic; Monthly](#)

[Disembarked passengers \(No.\) in Airports by Continent of origin; Monthly](#)

[Embarked passengers \(No.\) in airports by Geographic localization, Type of traffic and Nature of traffic; Monthly](#)

[Embarked passengers \(No.\) in airports by Destination continent; Monthly](#)

[Passengers in direct transit \(No.\) in airports by Geographic localization, Type of traffic and Nature of traffic; Monthly](#)

[Disembarked load \(t\) in airports by Geographic localization, Type of traffic and Nature of traffic; Monthly](#)

[Embarked load \(t\) in airports by Geographic localization, Type of traffic and Nature of traffic; Monthly](#)

[Disembarked mail \(t\) in airports by Geographic localization, Type of traffic and Nature of traffic; Monthly](#)

[Embarked mail \(t\) in airports by Geographic localization, Type of traffic and Nature of traffic; Monthly](#)



INSTITUTO NACIONAL DE ESTATÍSTICA
STATISTICS PORTUGAL

press release



ACRONYMS AND DESIGNATIONS

ANA	Portugal Airports, S.A.
ANAC	National Civil Aviation Authority
INE	Statistics Portugal

Next Press Release (monthly) - Air Transport Flash Statistics – January 13, 2024

Next Press Release (quarterly) - Transport activities (Q4 2024) – March 7th, 2024
