



September 12, 2024  
TRANSPORT ACTIVITIES  
Air Transport Flash Statistics  
July 2024

## MOVEMENT OF PASSENGERS AT NATIONAL AIRPORTS MAINTAINS TREND OF HISTORICAL HIGHS

In **July 2024**, 7.2 million passengers and 22.1 thousand tonnes of freight and mail were handled at national airports, corresponding to year-on-year variations of +2.6% and +18.5%, respectively, compared with July 2023.

During the first seven months of 2024 there were historic monthly highs of passengers at national airports. In July 2024, there was a daily average of nearly 120 thousand passengers disembarked, 2.3% higher value than the one registered in July 2023 (117.2 thousand).

In the **first seven months of 2024**, the number of passengers handled increased by 4.7% and the movement of freight and mail increased by 14.0%.

The United Kingdom was the main country of origin and destination of flights, having recorded increases in the number of disembarked (+1.9%) and embarked (+2.2%) passengers compared with the same period of 2023. France and Spain ranked 2<sup>nd</sup> and 3<sup>rd</sup> as the main countries of origin and destination.

Consult the information on the [Interactive Platform](#) (available only in Portuguese).

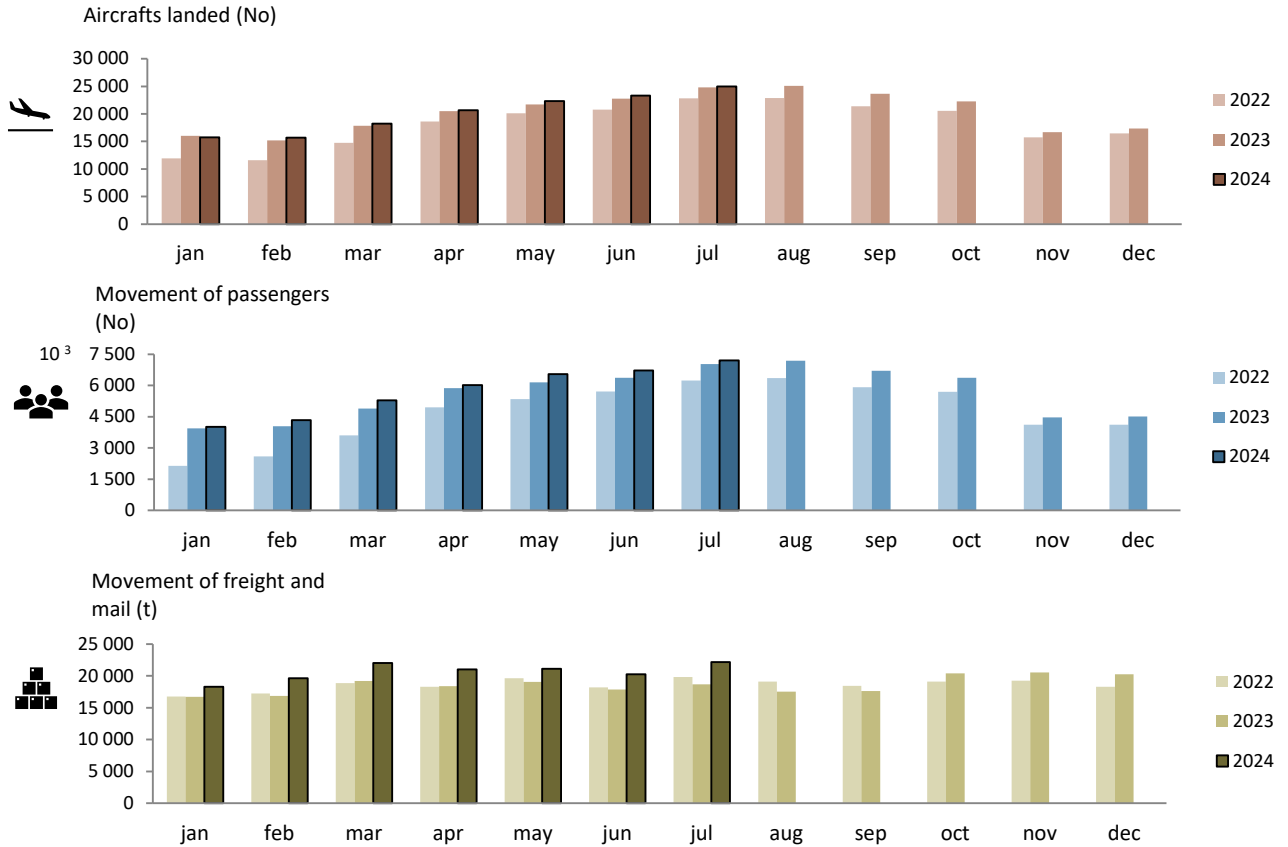
---

### Monthly traffic at national airports

In **July 2024**, nearly 25 thousand commercial aircrafts landed at national airports, corresponding to 7.2 million passengers (embarked, disembarked and direct transits) and 22.1 thousand tonnes of freight and mail were handled (+0.6%, +2.6% and +18.5%, respectively, compared with July 2023).



Figure 1. Aircrafts landed, passengers and freight/mail movement at national airports



Source: Survey to airports and aerodromes (ANA/ANAC/Statistics Portugal)

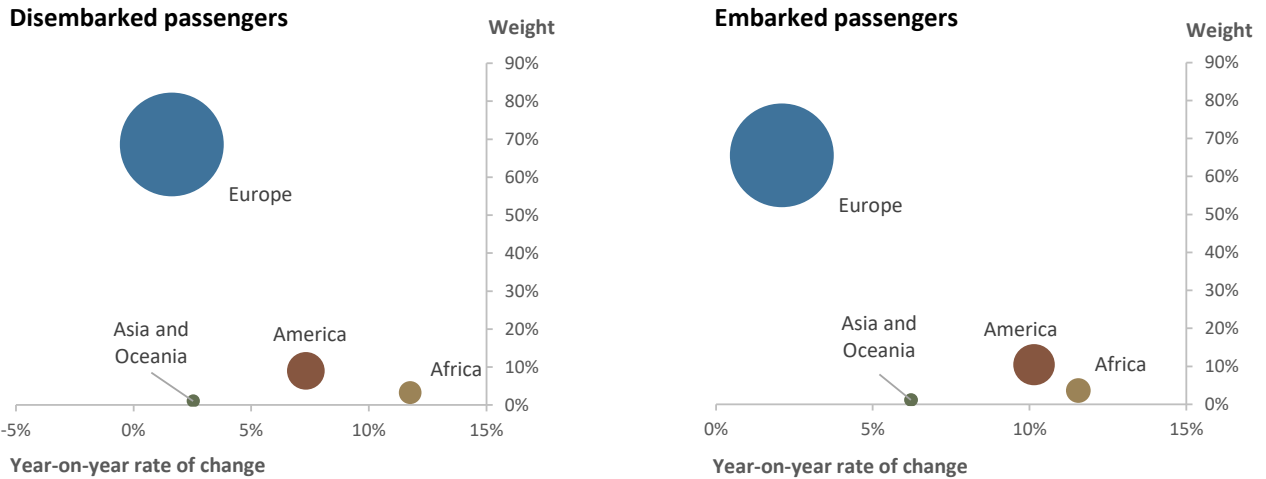
In July 2024, 82.0% of passengers disembarked at national airports corresponded to international traffic, reaching 3.0 million passengers (+2.6%<sup>1</sup>), mostly from the European continent (68.6% of the total), corresponding to an increase of 1.6% compared with July 2023. The American continent was the second main origin, concentrating 9.0% of the total passengers disembarked (+7.3%).

Regarding embarked passengers, 80.8% corresponded to international traffic, totalling 2.8 million passengers (+3.5%), having 65.5% of the total as main destination airports in the European continent, recording an increase of 2.1% compared with July 2023. Airports in the American continent were the second main destination of embarked passengers (10.4% of the total; +10.1%).

<sup>1</sup> Unless stated otherwise, the rates of change presented in this press release correspond to year-on-year rates of change.



Figure 2. Passengers disembarked and embarked at national airports by nature at international traffic, by Continent of origin/destination – July 2024

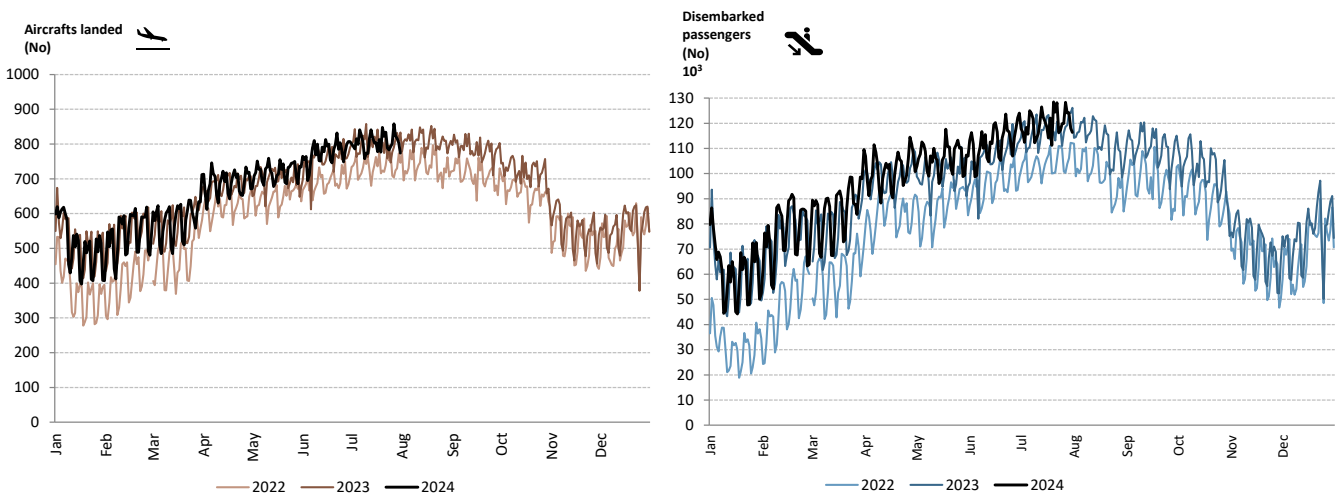


Source: Survey to airports and aerodromes (ANA/ANAC/Statistics Portugal)

The daily movement of aircrafts and passengers is typically influenced by seasonal and weekly cycle fluctuations. The highest daily values are generally recorded during the summer period and, last year, Saturday was the day of the week with the highest number of disembarked passengers.

During the first seven months of 2024 there were historic monthly highs of passengers at national airports. In July 2024, there was a daily average of nearly 120 thousand passengers disembarked, 2.3% higher value than the one registered in July 2023 (117.2 thousand).

Figure 3. Aircrafts landed and disembarked passengers at national airports – daily



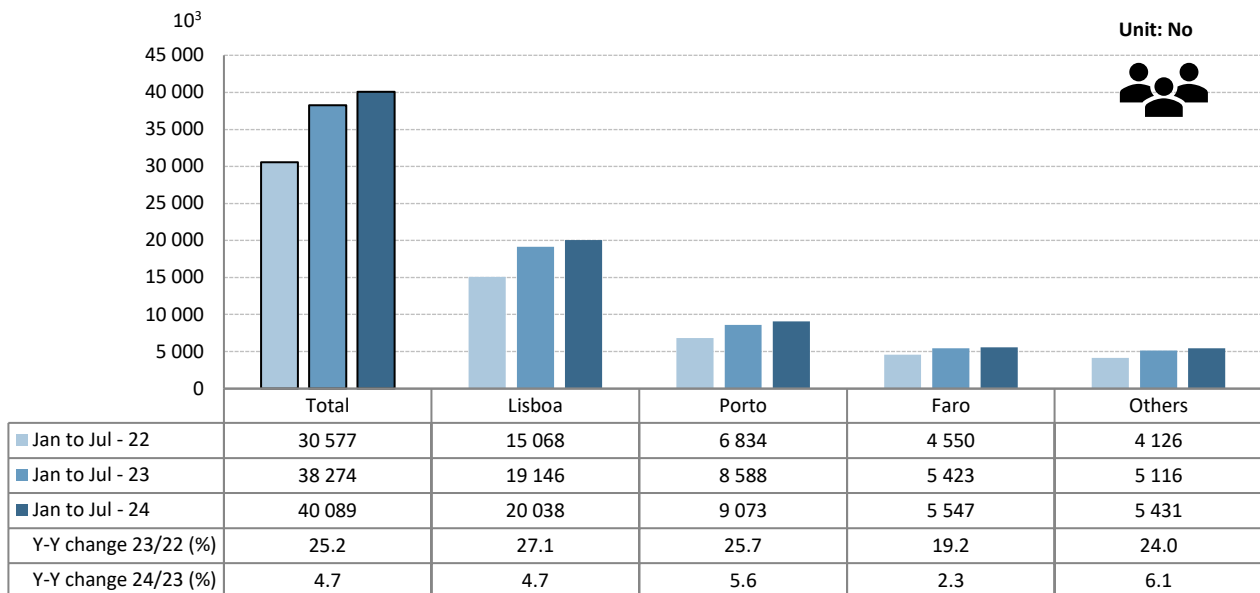
Source: Survey to airports and aerodromes (ANA/ANAC/Statistics Portugal)



## Accumulated traffic at national airports

In the **first seven months of 2024**, the movement of passengers at national airports increased by 4.7% compared with the same period of 2023 (+25.2% in 2023). The movement of passengers in Lisboa airport corresponded to 50.0% of total handled passengers (20.0 million; +4.7% compared with the same period of 2023). Porto airport accounted for 22.6% of total passengers handled (9.1 million; +5.6%). Faro airport recorded an increase of 2.3% in the movement of passengers, totalling 5.5 million.

Figure 4. Movement of passengers at national airports



Source: Survey to airports and aerodromes (ANA/ANAC/Statistics Portugal)

Considering the volume of passengers disembarked and embarked on international flights in the first seven months of 2024, the United Kingdom was the main country of origin and destination of flights, having recorded increases in the number of disembarked (+1.9%) and embarked (+2.2%) passengers compared with the same period of 2023. In the opposite direction, France recorded decreases (-2.4%) in the number of disembarked and embarked passengers, and occupied the 2<sup>nd</sup> position. Spain, Germany and Italy ranked 3<sup>rd</sup>, 4<sup>th</sup> and 5<sup>th</sup>, respectively, as the main countries of origin and destination.



Table 1. Main countries of origin and destination of flights with passengers at national airports

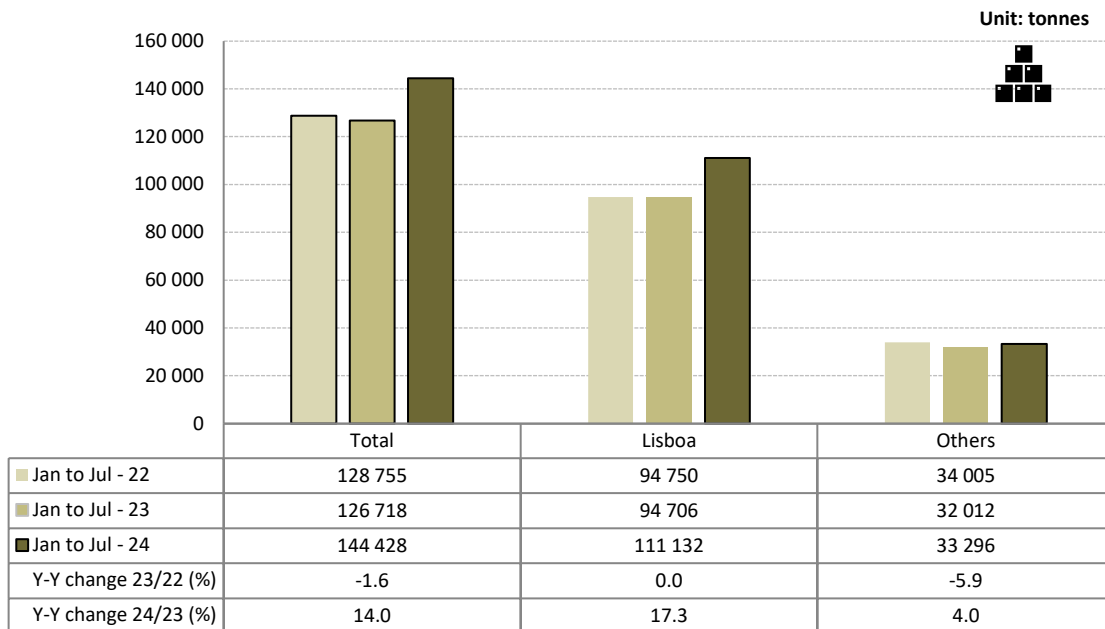
Ranking	Country of origin (of the flight)	Unit: No		Ranking	Country of destination (of the flight)	Unit: No	
		Jan to Jul 2024				Jan to Jul 2024	
		Passengers disembarked (10 <sup>3</sup> )	Y-on-Y change (%)			Passengers embarked (10 <sup>3</sup> )	Y-on-Y change (%)
1	United Kingdom	2 793.4	1.9	1	United Kingdom	2 713.4	2.2
2	France	2 507.9	-2.4	2	France	2 407.2	-2.4
3	Spain	2 089.8	3.8	3	Spain	2 028.0	3.7
4	Germany	1 466.1	7.0	4	Germany	1 444.2	7.4
5	Italy	932.2	3.0	5	Italy	927.8	3.8

Source: Survey to airports and aerodromes (ANA/ANAC/Statistics Portugal)

In the first seven months of 2024, there was an increase of 14.0% in freight and mail handled at national airports (-1.6% in 2023). The movement of freight and mail at Lisboa airport represented 76.9% of the total, corresponding to 111.1 thousand tonnes (+17.3% compared with the same period of 2023).

Considering the group of other airports, the movement of freight and mail increased by 4.0%.

Figure 5. Freight and mail movement at national airports



Source: Survey to airports and aerodromes (ANA/ANAC/Statistics Portugal)



## METHODOLOGICAL NOTES

In this Press Release the following statistical data are used:

2024: preliminary results;

2023: provisional results;

2022: definitive results.

**Main national airports** (considered in this Press Release as national airports): Lisboa, Porto, Faro, Ponta Delgada, Madeira, Porto Santo, Beja, Horta, Flores, Santa Maria, Terceira, Pico, Graciosa, São Jorge, Corvo, Portimão, Bragança, Cascais, Vila Real and Viseu.

**SOURCES:** Survey to airports and aerodromes (ANA/ANAC/Statistics Portugal)

## MAIN CONCEPTS:

**Commercial aviation** - Air transport flight performed for the public transport of passengers, freight or mail, for remuneration and for hire.

**Commercial air traffic** - Movement of aircrafts, passengers, freight and mail in commercial aviation.

## INTERACTIVE PLATFORM AT STATISTICS PORTUGAL:

[Interactive Platform](#) (available only in Portuguese)

## Monthly indicators at Statistics Portugal portal:

[Aircrafts landed \(No.\) in airports by Geographic localization, Type of traffic and Nature of traffic; Monthly](#)

[Aircrafts landed \(No.\) in airports by Continent of origin; Monthly](#)

[Aircrafts take-offs \(No.\) in airports by Geographic localization, Type of traffic and Nature of traffic; Monthly](#)

[Disembarked passengers \(No.\) in airports by Geographic localization, Type of traffic and Nature of traffic; Monthly](#)

[Disembarked passengers \(No.\) in Airports by Continent of origin; Monthly](#)

[Embarked passengers \(No.\) in airports by Geographic localization, Type of traffic and Nature of traffic; Monthly](#)

[Embarked passengers \(No.\) in airports by Destination continent; Monthly](#)

[Passengers in direct transit \(No.\) in airports by Geographic localization, Type of traffic and Nature of traffic; Monthly](#)

[Disembarked load \(t\) in airports by Geographic localization, Type of traffic and Nature of traffic; Monthly](#)

[Embarked load \(t\) in airports by Geographic localization, Type of traffic and Nature of traffic; Monthly](#)

[Disembarked mail \(t\) in airports by Geographic localization, Type of traffic and Nature of traffic; Monthly](#)

[Embarked mail \(t\) in airports by Geographic localization, Type of traffic and Nature of traffic; Monthly](#)



INSTITUTO NACIONAL DE ESTATÍSTICA  
STATISTICS PORTUGAL

press release



#### ACRONYMS AND DESIGNATIONS

ANA	Portugal Airports, S.A.
ANAC	National Civil Aviation Authority
INE	Statistics Portugal

---

**Next Press Release (monthly)** - Air Transport Flash Statistics – October 14, 2024

**Next Press Release (quarterly)** - Transport activities (Q3 2024) – December 6, 2024

---