



June 14, 2024  
TRANSPORT ACTIVITIES  
Air Transport Flash Statistics  
April 2024

## MOVEMENT OF PASSENGERS AT NATIONAL AIRPORTS MAINTAINS RECORD OF MONTHLY HISTORICAL HIGHS

In **Abril 2024**, 6.0 million passengers and 21.0 thousand tonnes of freight and mail were handled at national airports, corresponding to year-on-year variations of +2.3% and +14.4%, respectively, compared with April 2023.

At the beginning of 2024 there were still historic monthly highs of passengers at national airports. In April 2024, there was a daily average of 101.5 thousand passengers disembarked, a higher value than the one registered in April 2023 (99.2 thousand; +2.3%).

In the **first four months of 2024**, the number of passengers handled increased by 4.8% and the movement of freight and mail increased by 13.8%.

France was the main country of origin and destination of flights, despite the decrease in the number of disembarked (-2.4%) and embarked (-2.4%) passengers compared with the same period of 2023. The United Kingdom and Spain ranked 2<sup>nd</sup> and 3<sup>rd</sup> as the main countries of origin and destination.

---

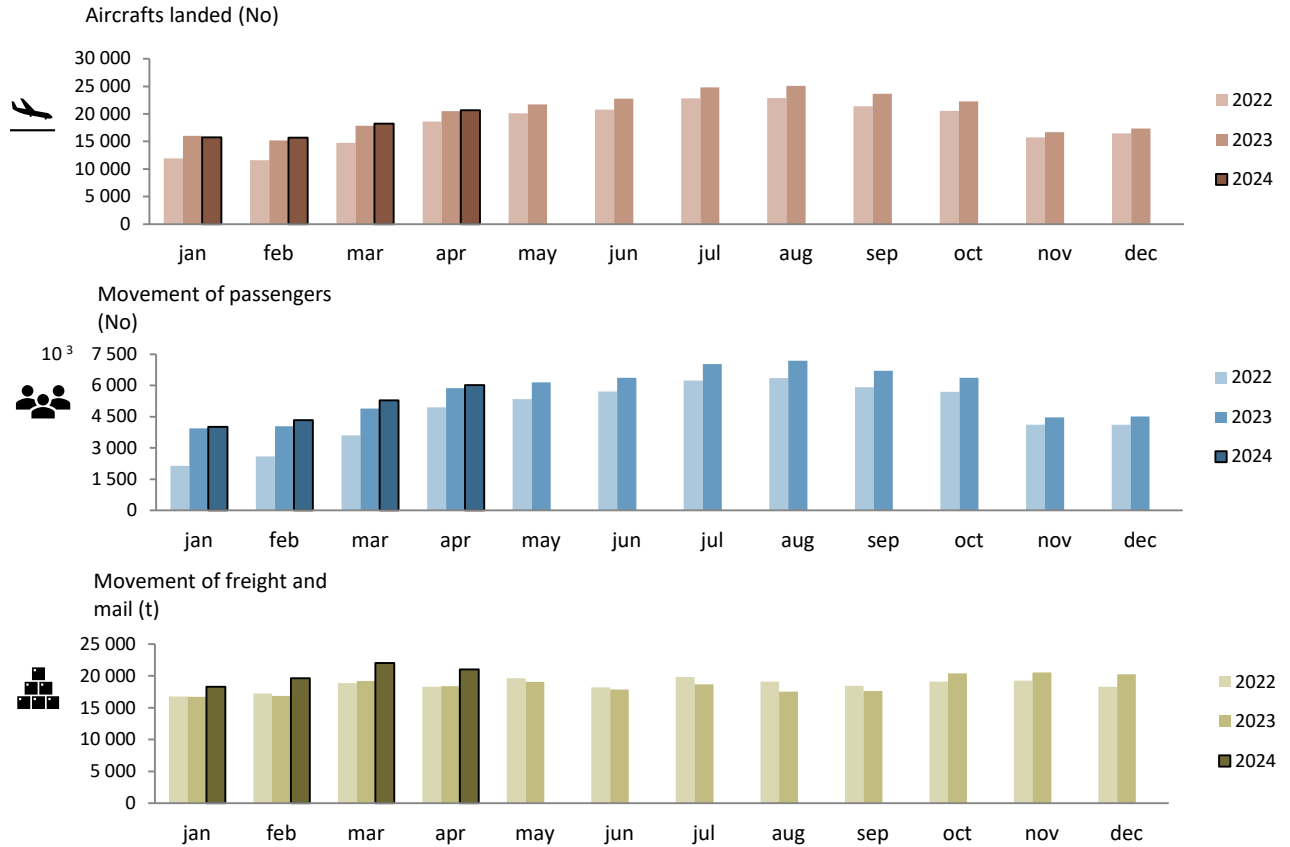
### Monthly traffic at national airports

In **April 2024**, 20.6 thousand commercial aircrafts landed at national airports, corresponding to 6.0 million passengers (embarked, disembarked and direct transits) and 21.0 thousand tonnes of freight and mail were handled (+0.7%, +2.3% and +14.4%, respectively, compared with April 2023).



# DIÍSTAQUE

Figure 1. Aircrafts landed, passengers and freight/mail movement at national airports



Source: Survey to airports and aerodromes (ANA/ANAC/Statistics Portugal)

In April 2024, 82.4% of passengers disembarked at national airports corresponded to international traffic, reaching 2.5 million passengers (+3.4%<sup>1</sup>), mostly from the European continent (69.3% of the total), corresponding to an increase of 1.5% compared with April 2023. The American continent was the second main origin, concentrating 8.9% of the total passengers disembarked (+15.1%).

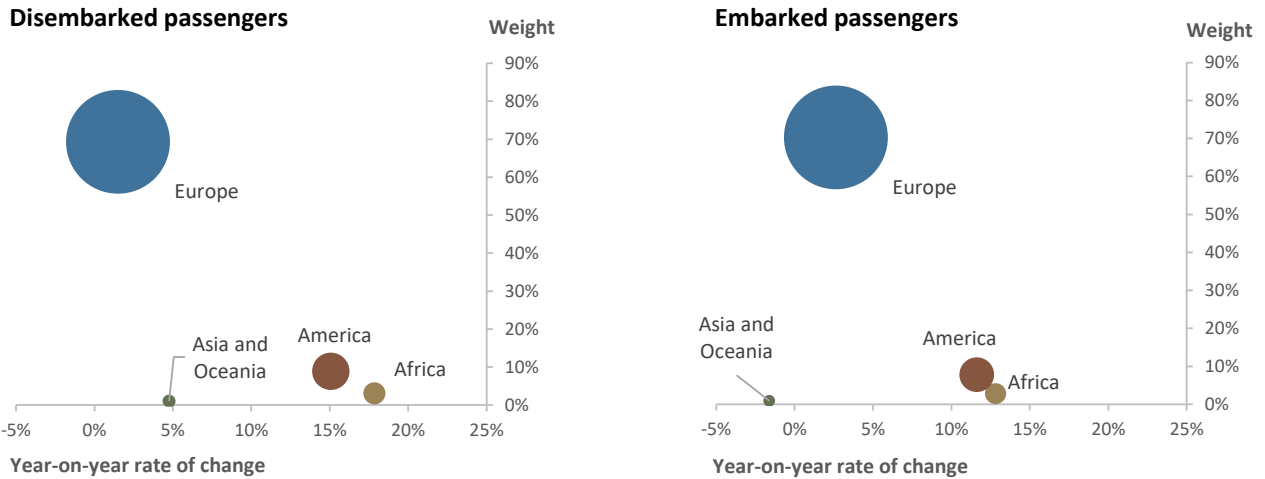
Regarding embarked passengers, 81.8% corresponded to international traffic, totalling 2.4 million passengers (+3.7%), having 70.3% of the total as main destination airports in the European continent, recording an increase of 2.6% compared with April 2023. Airports in the American continent were the second main destination of embarked passengers (7.8% of the total; +11.6%).

<sup>1</sup> Unless stated otherwise, the rates of change presented in this press release correspond to year-on-year rates of change.



# DIÍSTAQUE

Figure 2. Passengers disembarked and embarked at national airports by nature at international traffic, by Continent of origin/destination – April 2024

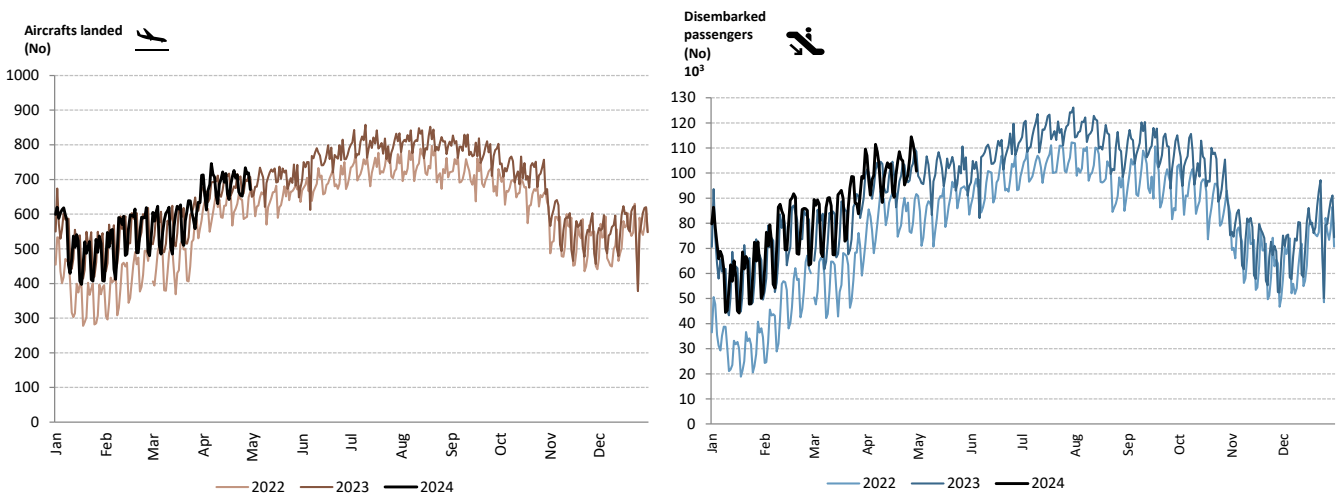


Source: Survey to airports and aerodromes (ANA/ANAC/Statistics Portugal)

The daily movement of aircrafts and passengers is typically influenced by seasonal and weekly cycle fluctuations. The highest daily values are generally recorded during the summer period and, last year, Saturday was the day of the week with the highest number of disembarked passengers.

At the beginning of 2024 there were still historic monthly highs of passengers at national airports. In April 2024, there was a daily average of 101.5 thousand passengers disembarked, a higher value than the one registered in April 2023 (99.2 thousand; +2.3%).

Figure 3. Aircrafts landed and disembarked passengers at national airports – daily



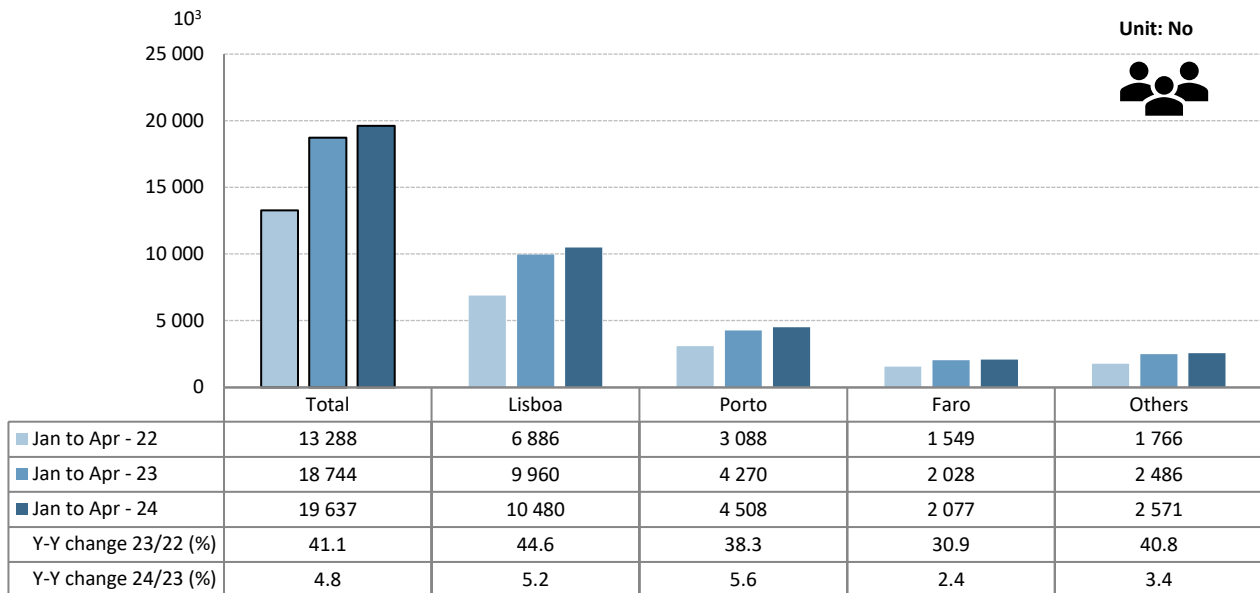
Source: Survey to airports and aerodromes (ANA/ANAC/Statistics Portugal)



## Accumulated traffic at national airports

In the **first four months of 2024**, the movement of passengers in Lisboa airport corresponded to 53.4% of total handled passengers (10.5 million; +5.2% compared with the same period of 2023). Porto airport accounted for 23.0% of total passengers handled (4.5 million; +5.6%). Faro airport recorded an increase of 2.4% in the movement of passengers (2.1 million).

Figure 4. Movement of passengers at national airports



Source: Survey to airports and aerodromes (ANA/ANAC/Statistics Portugal)

Considering the volume of passengers disembarked and embarked on international flights in the first four months of 2024, France was the main country of origin and destination of flights, despite the decrease in the number of disembarked (-2.4%) and embarked (-2.4%) passengers compared with the same period of 2023. The United Kingdom and Spain ranked 2<sup>nd</sup> and 3<sup>rd</sup>, respectively, as the main countries of origin and destination. Germany occupied the 4<sup>th</sup> position and recorded increases of 8.6% and 9.0% in the number of disembarked and embarked passengers, by the same order. Italy occupied the 5<sup>th</sup> position.



Table 1. Main countries of origin and destination of flights with passengers at national airports

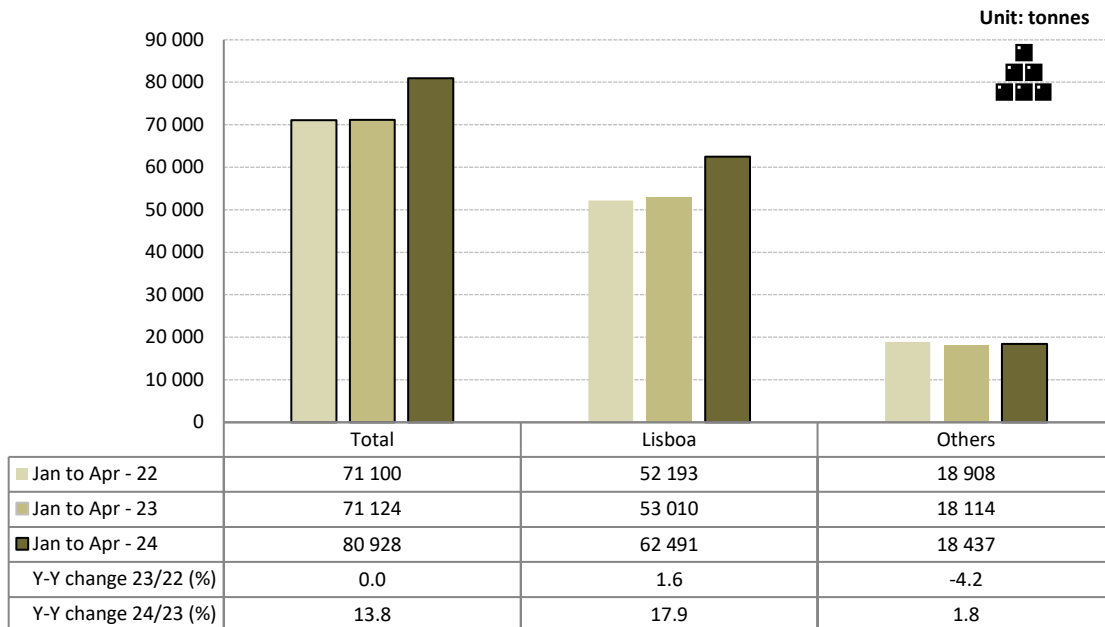
Ranking	Country of origin (of the flight)	Jan to Apr 2024		Ranking	Country of destination (of the flight)	Jan to Apr 2024	
		Passengers disembarked (10 <sup>3</sup> )	Y-on-Y change (%)			Passengers embarked (10 <sup>3</sup> )	Y-on-Y change (%)
		Unit: No				Unit: No	
1	France	1 249.0	-2.4	1	France	1 236.4	-2.4
2	United Kingdom	1 224.7	1.7	2	United Kingdom	1 231.2	2.6
3	Spain	1 032.3	0.8	3	Spain	1 014.5	0.2
4	Germany	700.0	8.6	4	Germany	702.9	9.0
5	Italy	480.8	2.2	5	Italy	485.0	3.1

Source: Survey to airports and aerodromes (ANA/ANAC/Statistics Portugal)

In the first four months of 2024, there was an increase of 13.8% in freight and mail handled at national airports. The movement of freight and mail at Lisboa airport represented 77.2% of the total, corresponding to 62.5 thousand tonnes (+17.9% compared with the same period of 2023).

Considering the group of other airports, the movement of freight and mail increased by 1.8%.

Figure 5. Freight and mail movement at national airports



Source: Survey to airports and aerodromes (ANA/ANAC/Statistics Portugal)



INSTITUTO NACIONAL DE ESTATÍSTICA  
STATISTICS PORTUGAL

press release



## METHODOLOGICAL NOTES

In this Press Release the following statistical data are used:

2024: preliminary results;

2023: provisional results;

2022: definitive results.

**Main national airports** (considered in this Press Release as national airports): Lisboa, Porto, Faro, Ponta Delgada, Madeira, Porto Santo, Beja, Horta, Flores, Santa Maria, Terceira, Pico, Graciosa, São Jorge, Corvo, Portimão, Bragança, Cascais, Vila Real and Viseu.

**SOURCES:** Survey to airports and aerodromes (ANA/ANAC/Statistics Portugal)

## MAIN CONCEPTS:

**Commercial aviation** - Air transport flight performed for the public transport of passengers, freight or mail, for remuneration and for hire.

**Commercial air traffic** - Movement of aircrafts, passengers, freight and mail in commercial aviation.

## INTERACTIVE PLATFORM AT STATISTICS PORTUGAL:

[Interactive Platform](#) (available only in Portuguese)

## Monthly indicators at Statistics Portugal portal:

[Aircrafts landed \(No.\) in airports by Geographic localization, Type of traffic and Nature of traffic; Monthly](#)

[Aircrafts landed \(No.\) in airports by Continent of origin; Monthly](#)

[Aircrafts take-offs \(No.\) in airports by Geographic localization, Type of traffic and Nature of traffic; Monthly](#)

[Disembarked passengers \(No.\) in airports by Geographic localization, Type of traffic and Nature of traffic; Monthly](#)

[Disembarked passengers \(No.\) in Airports by Continent of origin; Monthly](#)

[Embarked passengers \(No.\) in airports by Geographic localization, Type of traffic and Nature of traffic; Monthly](#)

[Embarked passengers \(No.\) in airports by Destination continent; Monthly](#)

[Passengers in direct transit \(No.\) in airports by Geographic localization, Type of traffic and Nature of traffic; Monthly](#)

[Disembarked load \(t\) in airports by Geographic localization, Type of traffic and Nature of traffic; Monthly](#)

[Embarked load \(t\) in airports by Geographic localization, Type of traffic and Nature of traffic; Monthly](#)

[Disembarked mail \(t\) in airports by Geographic localization, Type of traffic and Nature of traffic; Monthly](#)

[Embarked mail \(t\) in airports by Geographic localization, Type of traffic and Nature of traffic; Monthly](#)





INSTITUTO NACIONAL DE ESTATÍSTICA  
STATISTICS PORTUGAL

press release



#### ACRONYMS AND DESIGNATIONS

ANA	Portugal Airports, S.A.
ANAC	National Civil Aviation Authority
INE	Statistics Portugal

---

**Next Press Release (monthly)** - Air Transport Flash Statistics – July 15, 2024

**Next Press Release (quarterly)** - Transport activities (Q2 2024) – September 6, 2024

---