



## THE UNEMPLOYMENT RATE STOOD AT 6.3% AND THE LABOUR UNDERUTILISATION RATE AT 11.1%

### March 2024 (definitive estimates):

- The active population (5,367.0 thousand people) increased from the previous month (0.2%), from three months before (1.3%) and from the same month of 2023 (1.7%).
- The employed population (5,022.3 thousand) increased from February 2024 (0.4%), from December 2023 (1.4%) and from March 2023 (2.1%).
- The unemployed population (344.7 thousand) decreased from the three periods under comparison: 2.1%, 0.7% and 4.4%, respectively.
- The unemployment rate, which stood at 6.4%, decreased by 0.2 percentage points (pp) from the previous month, by 0.1 pp from three months before and by 0.4 pp from a year earlier.
- The inactive population (2,432.2 thousand) decreased from the previous month (0.4%), but it has increased from three months before (1.5%) and from the same month of 2023 (0.9%).
- The labour underutilisation rate was estimated at 11.2%, down from the three periods under comparison: 0.2 pp, 0.3 pp and 0.8 pp, respectively.

### April 2024 (provisional estimates)<sup>1</sup>:

- The active population (5,342.1 thousand) decreased from March (0.5%) and January 2024 (0.2%), having increased from April 2023 (1.2%).
- The employed population (5,004.7 thousand) decreased from the previous month (0.4%) and increased from three months before (1.9 thousand people, which corresponds to a nearly null relative change) and from a year earlier (1.5%).
- The unemployed population (337.4 thousand) decreased from the three periods under comparison: 2.1%, 3.5% and 2.8%, respectively.
- The unemployment rate stood at 6.3%, down from the previous month (0.1 pp), from three months before (0.2 pp) and from a year earlier (0.3 pp).
- The inactive population (2,460.9 thousand) increased from the three periods under comparison: 1.2%, 1.0% and 2.2%, respectively.
- The labour underutilisation rate stood at 11.1%, down from March 2024 (0.1 pp), down from January of the same year (0.4 pp) and down from April 2023 (0.9 pp).

<sup>1</sup> The estimates for the last reference month (in this case, the quarter centred in April 2024: from March to May 2024) are calculated with incomplete information for the last month of the quarter (May 2024). These estimates will be revised next month (as described in the methodological note).



The table below presents the main indicators of the Monthly Employment and Unemployment Estimates.

## Monthly Employment and Unemployment Estimates (16 to 74)

### Main Indicators

	Unit	Seasonally adjusted data						
		Mar 2023	Apr 2023	Dec 2023	Jan 2024	Feb 2024	Mar 2024	Apr 2024 (p)
Active population	Thousands	5,277.3	5,278.3	5,299.0	5,352.6	5,353.7	5,367.0	5,342.1
Employed population		4,916.8	4,931.1	4,952.0	5,002.8	5,001.7	5,022.3	5,004.7
Unemployed population		360.6	347.3	347.0	349.8	352.0	344.7	337.4
Inactive population		2,409.4	2,407.4	2,395.5	2,436.3	2,440.8	2,432.2	2,460.9
Labour underutilisation		652.6	652.6	627.9	631.7	625.3	616.0	610.2
Activity rate	%	68.7	68.7	68.9	68.7	68.7	68.8	68.5
Employment rate		64.0	64.2	64.4	64.2	64.2	64.4	64.1
Unemployment rate		6.8	6.6	6.5	6.5	6.6	6.4	6.3
Inactivity rate		31.3	31.3	31.1	31.3	31.3	31.2	31.5
Labour underutilisation rate		12.0	12.0	11.5	11.5	11.4	11.2	11.1

Source: Statistics Portugal, Labour Force Survey.

Note: (p) – Provisional estimates.

In **March 2024**, compared to the previous month, the active population increased by 13.3 thousand people (0.2%), due to the employed population increase (20.6 thousand; 0.4%) being higher than the unemployed population decrease (7.3 thousand; 2.1%). The inactive population decreased by 8.6 thousand (0.4%) due to the decrease of 8.6 thousand (0.4%) of other inactive persons, those not searching for a job nor available to work, while the remaining groups of the inactive population rested almost unchanged.

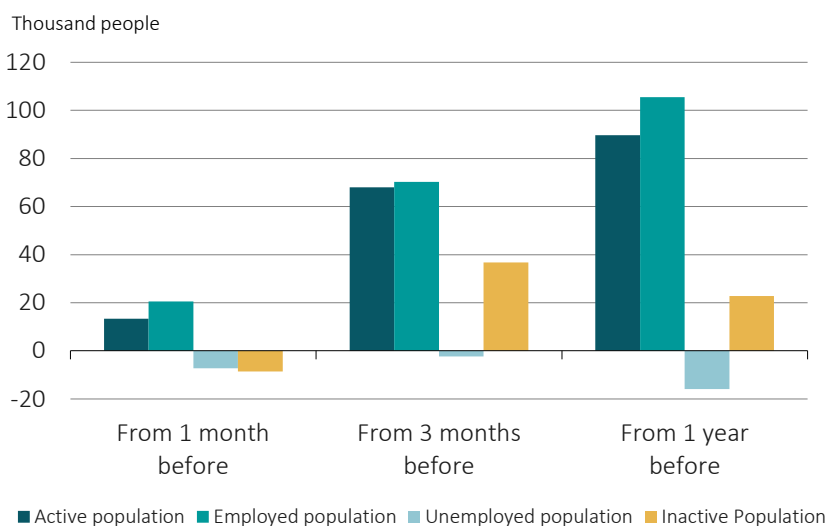
From three months before, the active population increased by 68.0 thousand (1.3%) due to the increase of the employed population (70.3 thousand; 1.4%) which more than compensated for the unemployed population decrease (2.3 thousand; 0.7%). The inactive population increased by 36.7 thousand (1.5%) due to the increase in the number of other inactive persons (42.0 thousand, 1.9%).

The active population increase by 89.7 thousand (1.7%) from March 2023 resulted from the increase observed in the employed population (105.5 thousand; 2.1%) which largely surpassed the decrease of the unemployed population (15.9 thousand; 4.4%). The inactive population increased by 22.8 thousand (0.9%), due to the increase in the number of other inactive persons (33.0 thousand; 1.5%).

These results determined the following changes in the unemployment rate, which stood at 6.4% in March 2024: a negative change of 0.2 pp from February 2024, of 0.1 pp from December 2023 and of 0.4 pp from March 2023.



Figure 1. Change in the active, employed, unemployed and inactive population in March 2024  
(seasonally adjusted data)



Also in March 2024, labour underutilisation covered 616.0 thousand people, down from the previous month (9.3 thousand; 1.5%), from three months before (11.9 thousand; 1.9%) and from a year earlier (36.6 thousand, 5.6%). The labour underutilisation rate was estimated at 11.2%, having decreased from the three periods under analysis: 0.2 pp, 0.3 pp and 0.8 pp, respectively.

In **April 2024**, compared to the previous month, the active population decreased by 24.9 thousand (0.5%) and the inactive population increased by 28.7 thousand (1.2%). The change of the active population resulted from the decrease of 17.6 thousand people (0.4%) in the employed population and of 7.3 thousand (2.1%) in the unemployed population. The change of the inactive population was mainly explained by the increase in the number of other inactive persons, those not searching for a job nor available to work (24.1 thousand; 1.0%).

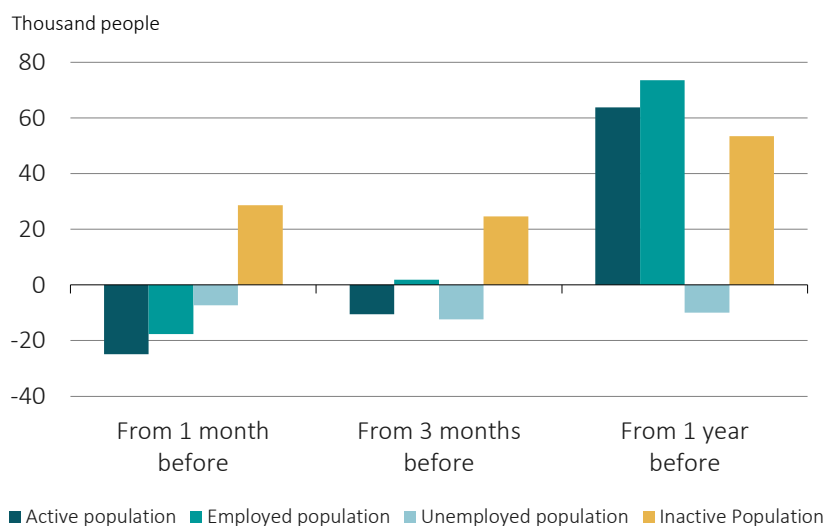
The decrease of 10.5 thousand people (0.2%) observed in the active population from three months before resulted from the decrease of 12.4 thousand (3.5%) in the unemployed population, which surpassed the slight increase of the employed population (1.9 thousand, which corresponded to a nearly null relative change). The increase of the inactive population (24.6 thousand; 1.0%) was mainly due to the increase in the number of other inactive persons (25.7%; 1.1%).

The active population increased by 63.8 thousand (1.2%) from April 2023 following the increase in the employed population (73.6 thousand; 1.5%) that exceeded the decrease of the unemployed population (9.9 thousand; 2.8%). The inactive population increased by 53.5 thousand people (2.2%), essentially due to the increase in the number of other inactive persons (70.3 thousand; 3.1%).

These results determined the following changes in the unemployment rate, which stood at 6.3% in April 2024: down from the three periods under comparison, namely, 0.1 pp, 0.2 pp and 0.3 pp.



Figure 2. Change in the active, employed, unemployed and inactive population in April 2024  
(seasonally adjusted data)



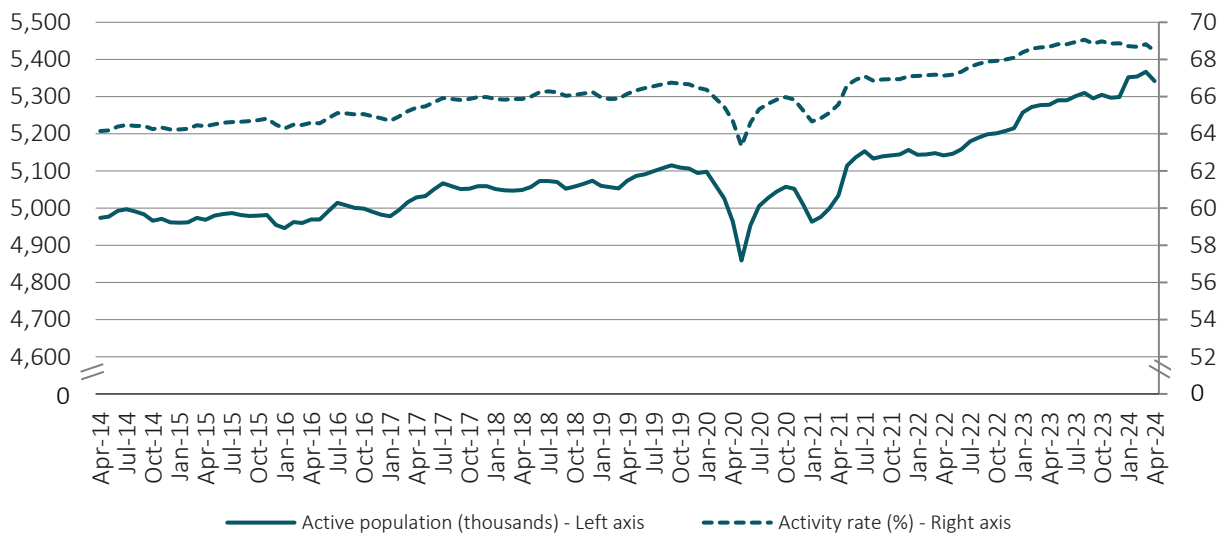
**Note:** The April 2024 estimates are provisional.

Also in April 2024, labour underutilisation covered 610.2 thousand people, down from the previous month (5.8 thousand; 0.9%), from three months before (21.5 thousand; 3.4%) and from the same month of 2023 (42.4 thousand; 6.5%). The labour underutilisation rate – estimated at 11.1% – decreased from March 2024 (0.1 pp), from January of the same year (0.4 pp) and from April 2023 (0.9 pp).



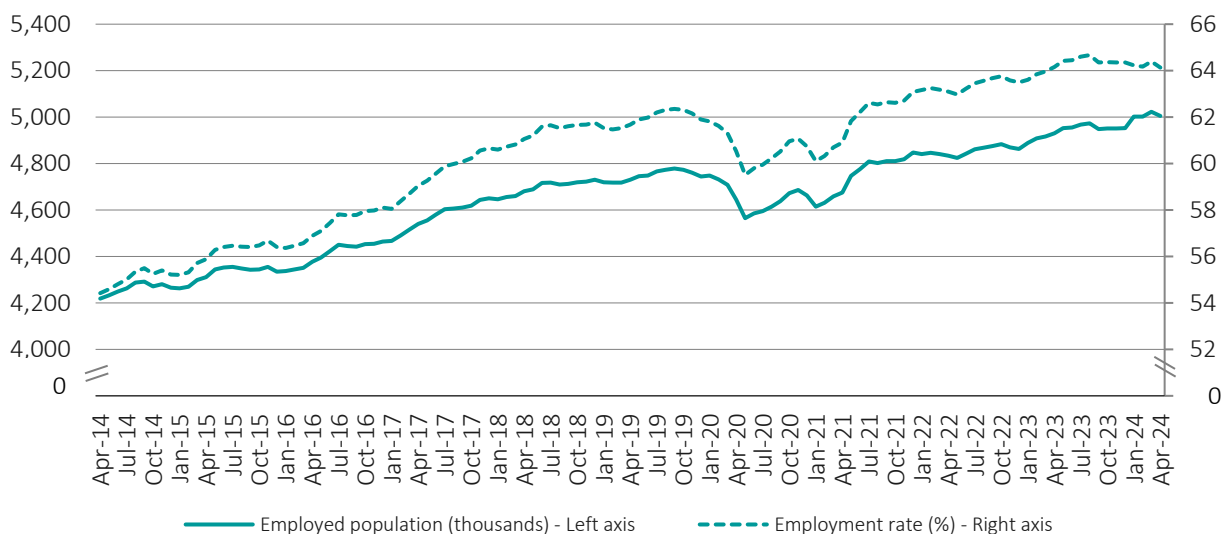
The following figures show the evolution in the last 10 years of the main indicators analysed in this Press Release. In March 2024, the active population (5,367.0 thousand) recorded the highest value since the beginning of the time series in 1998, as well as the employed population (5,022.3 thousand).

**Figure 3. Active population and activity rate**  
(seasonally adjusted data)



**Note:** The April 2024 estimates are provisional.

**Figure 4. Employed population and employment rate**  
(seasonally adjusted data)



**Note:** The April 2024 estimates are provisional.



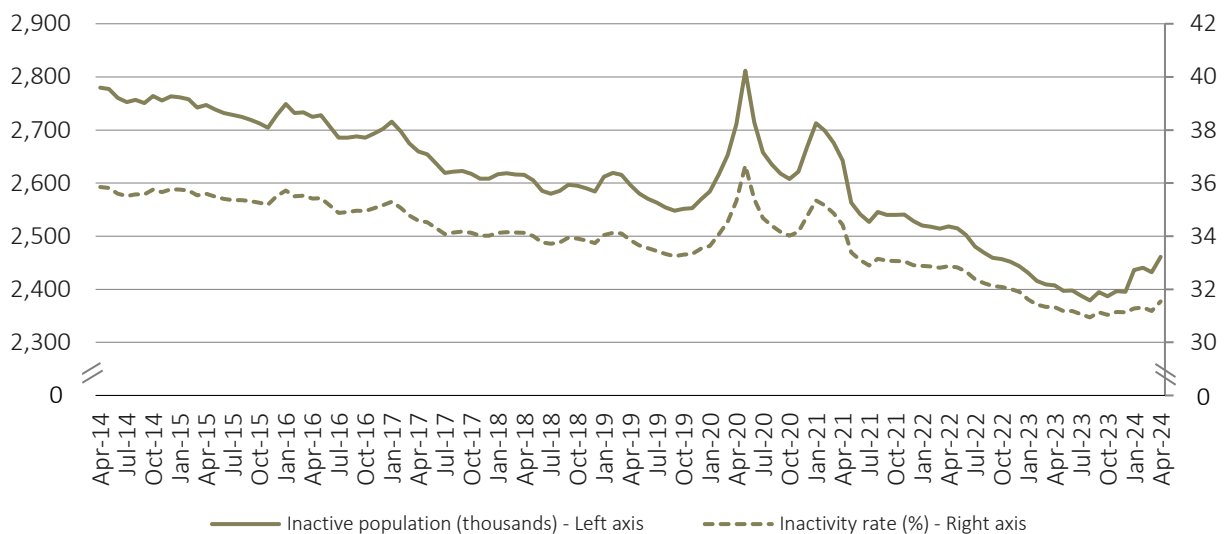
In April 2024, the unemployment rate stood at 6.3%, the lowest value since August 2023 (also 6.3%). The inactivity rate stood at 31.5%, recording the highest level since January 2023 (31.6%).

**Figure 5. Unemployed population and unemployment rate**  
(seasonally adjusted data)



**Note:** The April 2024 estimates are provisional.

**Figure 6. Inactive population and inactivity rate**  
(seasonally adjusted data)

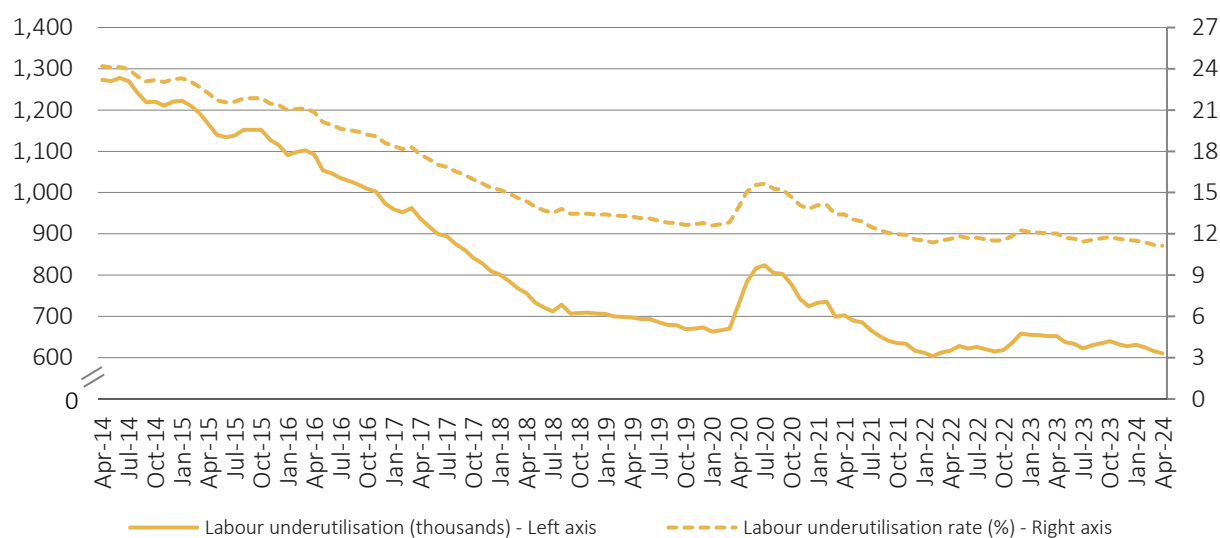


**Note:** The April 2024 estimates are provisional.



In April 2024, the labour underutilisation (610.2 thousand) reached its lowest value since February 2022 (603.5 thousand). On the other hand, the labour underutilisation rate stood at the lowest value since the start of the series in 2011 (11.1%).

Figure 7. Labour underutilisation and labour underutilisation rate  
(seasonally adjusted data)



Note: The April 2024 estimates are provisional.



## Criteria used when classifying the population aged 16 to 74 by labour status

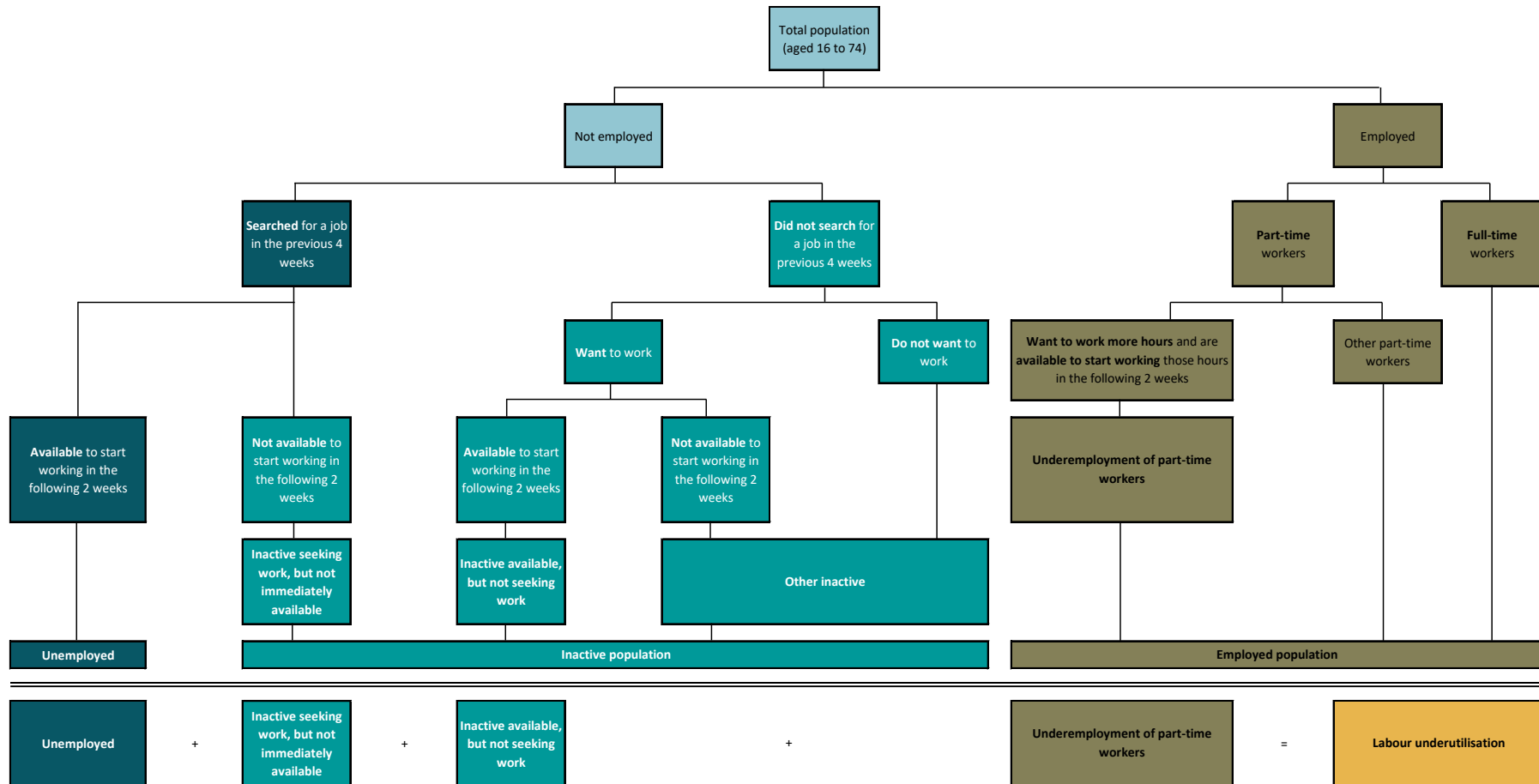






Table 1: Active population and activity rate by sex and age group (16 to 74 years)

	Seasonally adjusted data					Not seasonally adjusted data				
	Apr 2023	Jan 2024	Feb 2024	Mar 2024	Apr 2024 (p)	Apr 2023	Jan 2024	Feb 2024	Mar 2024	Apr 2024 (p)
	Thousands									
<b>Active population</b>	<b>5,278.3</b>	<b>5,352.6</b>	<b>5,353.7</b>	<b>5,367.0</b>	<b>5,342.1</b>	<b>5,272.6</b>	<b>5,361.3</b>	<b>5,360.2</b>	<b>5,369.5</b>	<b>5,336.2</b>
Men	2,634.5	2,670.8	2,675.8	2,684.0	2,681.0	2,632.8	2,678.9	2,681.2	2,687.2	2,679.2
Women	2,643.8	2,681.8	2,677.9	2,683.0	2,661.1	2,639.7	2,682.4	2,679.0	2,682.3	2,657.0
Youth (aged 16 to 24)	381.7	389.7	382.2	378.8	370.5	372.3	389.5	377.9	373.4	361.8
Adults (aged 25 to 74)	4,896.6	4,962.8	4,971.5	4,988.2	4,971.6	4,900.3	4,971.7	4,982.3	4,996.1	4,974.4
	%									
<b>Activity rate</b>	<b>68.7</b>	<b>68.7</b>	<b>68.7</b>	<b>68.8</b>	<b>68.5</b>	<b>68.6</b>	<b>68.8</b>	<b>68.8</b>	<b>68.8</b>	<b>68.4</b>
Men	71.7	71.6	71.6	71.8	71.7	71.7	71.8	71.8	71.9	71.7
Women	65.9	66.1	66.0	66.0	65.5	65.8	66.1	66.0	66.0	65.4
Youth (aged 16 to 24)	38.6	39.4	38.6	38.3	37.4	37.7	39.3	38.2	37.7	36.5
Adults (aged 25 to 74)	73.1	73.0	73.1	73.3	73.0	73.2	73.1	73.2	73.4	73.0

Source: Statistics Portugal, Labour Force Survey.

Note: (p) – Provisional estimates.

Table 2: Employed population and employment rate by sex and age group (16 to 74 years)

	Seasonally adjusted data					Not seasonally adjusted data				
	Apr 2023	Jan 2024	Feb 2024	Mar 2024	Apr 2024 (p)	Apr 2023	Jan 2024	Feb 2024	Mar 2024	Apr 2024 (p)
	Thousands									
<b>Employed population</b>	<b>4,931.1</b>	<b>5,002.8</b>	<b>5,001.7</b>	<b>5,022.3</b>	<b>5,004.7</b>	<b>4,925.8</b>	<b>4,994.5</b>	<b>4,992.0</b>	<b>5,016.1</b>	<b>4,999.4</b>
Men	2,468.5	2,510.5	2,517.7	2,535.4	2,534.7	2,465.4	2,508.0	2,515.1	2,532.7	2,531.6
Women	2,462.6	2,492.3	2,484.0	2,486.9	2,469.9	2,460.4	2,486.5	2,476.9	2,483.4	2,467.8
Youth (aged 16 to 24)	311.8	297.7	296.4	293.1	288.1	308.2	293.3	291.0	288.3	284.5
Adults (aged 25 to 74)	4,619.2	4,705.1	4,705.3	4,729.3	4,716.6	4,617.6	4,701.2	4,701.0	4,727.8	4,714.9
	%									
<b>Employment rate</b>	<b>64.2</b>	<b>64.2</b>	<b>64.2</b>	<b>64.4</b>	<b>64.1</b>	<b>64.1</b>	<b>64.1</b>	<b>64.0</b>	<b>64.3</b>	<b>64.1</b>
Men	67.2	67.3	67.4	67.8	67.8	67.1	67.2	67.3	67.8	67.7
Women	61.4	61.4	61.2	61.2	60.8	61.3	61.3	61.0	61.1	60.7
Youth (aged 16 to 24)	31.6	30.1	29.9	29.6	29.1	31.2	29.6	29.4	29.1	28.7
Adults (aged 25 to 74)	69.0	69.2	69.2	69.5	69.2	68.9	69.1	69.1	69.4	69.2

Source: Statistics Portugal, Labour Force Survey.

Note: (p) – Provisional estimates.



Table 3: Unemployed population and unemployment rate by sex and age group (16 to 74 years)

	Seasonally adjusted data					Not seasonally adjusted data				
	Apr 2023	Jan 2024	Feb 2024	Mar 2024	Apr 2024 (p)	Apr 2023	Jan 2024	Feb 2024	Mar 2024	Apr 2024 (p)
	Thousands									
<b>Unemployed population</b>	<b>347.3</b>	<b>349.8</b>	<b>352.0</b>	<b>344.7</b>	<b>337.4</b>	<b>346.7</b>	<b>366.8</b>	<b>368.2</b>	<b>353.4</b>	<b>336.8</b>
Men	166.0	160.3	158.1	148.6	146.2	167.4	170.9	166.1	154.4	147.6
Women	181.2	189.5	194.0	196.0	191.2	179.3	195.9	202.0	198.9	189.2
Youth (aged 16 to 24)	69.9	92.0	85.8	85.8	82.4	64.1	96.3	86.9	85.1	77.3
Adults (aged 25 to 74)	277.4	257.8	266.2	258.9	255.0	282.6	270.6	281.3	268.3	259.5
	%									
<b>Unemployment rate</b>	<b>6.6</b>	<b>6.5</b>	<b>6.6</b>	<b>6.4</b>	<b>6.3</b>	<b>6.6</b>	<b>6.8</b>	<b>6.9</b>	<b>6.6</b>	<b>6.3</b>
Men	6.3	6.0	5.9	5.5	5.5	6.4	6.4	6.2	5.7	5.5
Women	6.9	7.1	7.2	7.3	7.2	6.8	7.3	7.5	7.4	7.1
Youth (aged 16 to 24)	18.3	23.6	22.5	22.6	22.2	17.2	24.7	23.0	22.8	21.4
Adults (aged 25 to 74)	5.7	5.2	5.4	5.2	5.1	5.8	5.4	5.6	5.4	5.2

Source: Statistics Portugal, Labour Force Survey.

Note: (p) – Provisional estimates.

Table 4: Inactive population and inactivity rate by sex and age group (16 to 74 years)

	Seasonally adjusted data					Not seasonally adjusted data				
	Apr 2023	Jan 2024	Feb 2024	Mar 2024	Apr 2024 (p)	Apr 2023	Jan 2024	Feb 2024	Mar 2024	Apr 2024 (p)
	Thousands									
<b>Inactive population</b>	<b>2,407.4</b>	<b>2,436.3</b>	<b>2,440.8</b>	<b>2,432.2</b>	<b>2,460.9</b>	<b>2,413.2</b>	<b>2,427.6</b>	<b>2,434.3</b>	<b>2,429.7</b>	<b>2,466.8</b>
Men	1,038.8	1,061.8	1,059.1	1,053.0	1,058.1	1,040.4	1,053.7	1,053.7	1,049.9	1,059.9
Women	1,368.7	1,374.6	1,381.7	1,379.2	1,402.8	1,372.7	1,374.0	1,380.6	1,379.8	1,406.9
Youth (aged 16 to 24)	606.1	600.4	608.0	611.3	619.5	615.5	600.6	612.4	616.7	628.2
Adults (aged 25 to 74)	1,801.3	1,836.0	1,832.8	1,820.9	1,841.5	1,797.6	1,827.1	1,821.9	1,813.0	1,838.7
	%									
<b>Inactivity rate</b>	<b>31.3</b>	<b>31.3</b>	<b>31.3</b>	<b>31.2</b>	<b>31.5</b>	<b>31.4</b>	<b>31.2</b>	<b>31.2</b>	<b>31.2</b>	<b>31.6</b>
Men	28.3	28.4	28.4	28.2	28.3	28.3	28.2	28.2	28.1	28.3
Women	34.1	33.9	34.0	34.0	34.5	34.2	33.9	34.0	34.0	34.6
Youth (aged 16 to 24)	61.4	60.6	61.4	61.7	62.6	62.3	60.7	61.8	62.3	63.5
Adults (aged 25 to 74)	26.9	27.0	26.9	26.7	27.0	26.8	26.9	26.8	26.6	27.0

Source: Statistics Portugal, Labour Force Survey.

Note: (p) – Provisional estimates.



Table 5: Labour underutilisation and labour underutilisation rate (16 to 74 years)

	Seasonally adjusted data					Not seasonally adjusted data				
	Apr 2023	Jan 2024	Feb 2024	Mar 2024	Apr 2024 (p)	Apr 2023	Jan 2024	Feb 2024	Mar 2024	Apr 2024 (p)
	Thousands									
<b>Labour underutilisation</b>	<b>652.6</b>	<b>631.7</b>	<b>625.3</b>	<b>616.0</b>	<b>610.2</b>	<b>651.7</b>	<b>659.5</b>	<b>646.1</b>	<b>623.3</b>	<b>603.8</b>
Unemployed population	347.3	349.8	352.0	344.7	337.4	346.7	366.8	368.2	353.4	336.8
Underemployed part-time workers	151.0	143.2	140.3	138.3	135.2	154.9	146.9	143.5	138.6	133.0
Persons seeking work but not immediately available	29.4	34.0	29.3	28.6	30.9	28.2	35.3	28.5	27.2	29.7
Persons available to work but not seeking	125.1	104.7	103.7	104.4	106.7	121.9	110.5	105.9	104.2	104.3
	%									
<b>Labour underutilisation rate</b>	<b>12.0</b>	<b>11.5</b>	<b>11.4</b>	<b>11.2</b>	<b>11.1</b>	<b>12.0</b>	<b>12.0</b>	<b>11.8</b>	<b>11.3</b>	<b>11.0</b>

Source: Statistics Portugal, Labour Force Survey.

Note: (p) – Provisional estimates.



## METHODOLOGICAL NOTE

### LABOUR FORCE SURVEY

The main purpose of the Labour Force Survey is to classify the population in terms of their participation in the labour market. It is a quarterly sample survey, addressed to all persons living in the national territory.

Most of the characteristics observed in this survey report to the situation in one pre-defined week (from Monday to Sunday), known as reference week. The reference weeks are uniformly distributed throughout the quarters and years. The interviews usually take place in the week following the reference week.

The information is obtained directly, through computer-assisted interview by using a mixed data collection mode: the initial interview is done face-to-face by an interviewer visiting the household and the other five interviews are done by telephone if certain requirements are met. It should be noticed that, following the COVID-19 pandemic and the measures adopted by the competent authorities, Statistics Portugal has decided, between the first fortnight of March 2020 and the end of the collection of the 2<sup>nd</sup> quarter of 2022, to suspend the face-to-face collection mode, replacing it exclusively with telephone interviews. After analysing the impact of adopting an exclusively telephone data collection mode, in November 2023 Statistics Portugal revised the estimates for the 2<sup>nd</sup> quarter of 2020 to the 2<sup>nd</sup> quarter of 2023 by incorporating the variable "completed level of education" into the process of calibrating the individual weights, in addition to the information usually used (monthly estimates of the resident population by sex, age group and region). The estimation of the results for the 3<sup>rd</sup> quarter of 2023 was carried out in a similar way and the monthly employment and unemployment estimates released from the 29<sup>th</sup> of November 2023 onwards reflect this revision.<sup>2</sup>

Published data were calibrated by using the population estimates calculated from the final results of Census 2011.

### MONTHLY EMPLOYMENT AND UNEMPLOYMENT ESTIMATES

In 2014, Statistics Portugal initiated a monthly release of Labour Force Survey estimates for the main labour market indicators in addition to the usual quarterly estimates' releases.

With this initiative, Statistics Portugal intends to provide to users monthly updated information on labour market recent developments, allowing, at the same time, a more complete reading picture than that provided so far by Eurostat in its monthly releases of the unemployed population and unemployment rate estimates for Portugal. With this dissemination, Statistics Portugal also satisfies a specific requirement from the PEEIs (Principal European Economic Indicators).

<sup>2</sup> For more information on the context, methodology and impacts of this revision, see the "Methodological note on the revision of the Labour Force Survey data: the context of the COVID-19 pandemic", published on 8 November 2023 together with the [Press Release "Employment Statistics – 3<sup>rd</sup> quarter of 2023"](#).



Taking advantage of the continuous nature of the Labour Force Survey collection process, it is possible to monthly obtain estimates related to successive sets of three months (moving quarters), assuring consistency with the quarterly released estimates.

The monthly estimates refer to centred moving quarters, where the reference month (m) corresponds to the central month of each moving quarter. In fact, the reference month of each Press Release corresponds to the central month of the quarter composed by m-1, m and m+1 months. Therefore, the monthly changes are calculated on values that contain common months. Therefore, the comparison of moving quarters without common months should be done in relation to reference months three months earlier.

The option for disseminating centred moving quarters series aimed at avoiding delays in the detection of turning points in the economic cycle that arise from the use of simple moving averages, but it implies that the estimates for the latest released moving quarter are provisional (see “Revisions” section below).

As estimates of centred moving quarters, the values (not seasonally adjusted) of the reference months February, May, August, and November of each year correspond to the estimates of the 1<sup>st</sup>, 2<sup>nd</sup>, 3<sup>rd</sup>, and 4<sup>th</sup> natural quarters, respectively, whose results are published and analysed with greater detail in the quarterly releases of the Labour Force Survey estimates.

The estimates for the last reference month are always provisional, as they correspond to a moving quarter where for the third month the data collection is not completed yet. In fact, for the first two months (m-1 and m) the data collection from the Labour Force Survey is already completed, while for the third month (m+1) only partially collected data are available.

In this context, in each monthly Press Release the provisional estimates for the reference month and the revised estimates for the previous months are published, due the availability of complete information for the last moving quarter.

## INFORMATION AVAILABLE

The data series selected for monthly releases refer to both employed and unemployed population, by sex and age group, and to the corresponding rates. In relation to these data series, it should be noted the following:

- Unless otherwise stated, the data series analysed in this Press Release are seasonally adjusted. For this reason, the analysis focuses on the comparison with the most recent periods. As agreed, Eurostat started using these estimates in its unemployment monthly releases. The original data series (not seasonally adjusted; as in the Statistics Portugal quarterly releases), are available in Tables of the annex.
- The indicators analysed in this Press Release were calculated for the age subgroup of those aged 16 to 74 (as in the Eurostat News Release), which differs from the criterion adopted at the Statistics Portugal quarterly releases (people aged 16 to 89, in line with the concepts in force of the International Labour Organization).

The back series for all the released and analysed indicators in this Press Release, since February 1998 (quarter from January to March 1998), are available at Statistics Portugal website and the links to them can be found in the Excel file released together with this Press Release.

Due to rounding, totals may not correspond exactly to the sum of the parts.



## REVISIONS

The monthly released data are subject to regular revisions, as previously mentioned. The revisions come from obtaining the final estimates for the previous reference month (moving quarter) due to the conclusion of its last month collection process. Therefore, in each Press Release the not seasonally adjusted final estimates for the previous reference month are published. In addition, are also presented the final estimates resulting from updating of the seasonally adjusted data series whenever a new observation is added.

Revision of March 2024 estimates (16 to 74) - main indicators -			
	Unit	Seasonally adjusted data	Not seasonally adjusted data
Active population		6.5	7.6
Employed population		8.4	9.6
Unemployed population	Thousands	- 1.8	- 2.0
Inactive population		- 6.5	- 7.6
Labour underutilisation		- 8.3	- 9.4
Employment rate		0.1	0.1
Unemployment rate		- 0.1	0.0
Men's unemployment rate		0.0	- 0.1
Women's unemployment rate	pp	- 0.1	- 0.1
Youth unemployment rate (16 to 24)		0.3	0.3
Adults' unemployment rate (25 to 74)		- 0.1	0.0
Labour underutilisation rate		- 0.2	- 0.2

## SOME CONCEPTS

**Unemployed:** person aged 16 and 74 who during the reference period met simultaneously the following conditions:

- neither had a job nor was at work;
- had actively sought work, i.e., had actively searched for a paid or unpaid job during the specified period (reference period or the three previous weeks); and
- was available for a paid or unpaid job.

**Employed:** person aged 16 to 89 who, during the reference period, was in one of the following situations:

- worked for at least one hour for a wage or salary, in cash or in kind (including unpaid family work);
- had a formal attachment to his/her job but was not at work temporarily;
- was in early retirement but working in the reference week.

**Working age resident population:** Resident population aged 16 to 89.



**Active:** person aged 16 to 89 who, during the reference period, furnish the supply of labour force for the production of economic goods and services (was employed or unemployed).

**Labour force:** population formed by all active persons.

**Extended labour force:** corresponds to the labour force enlarged by the inactive seeking work but not immediately available and the inactive available but not seeking work.

**Labour underutilisation:** indicator that aggregates the unemployed population, the underemployment of part-time workers, the inactive seeking work but not immediately available, and the inactive available but not seeking work.

**Unemployment rate:** rate that defines the relation between the unemployed population and the labour force.

$$\text{U.R. (\%)} = (\text{Unemployed population} / \text{Labour force}) \times 100$$

**Employment rate:** rate that defines the relation between the employed population and the working age population.

$$\text{E.R. (\%)} = (\text{Employed population} / \text{Working age population}) \times 100$$

**Activity rate of the working age population:** rate that defines the relation between the labour force and the working age population.

$$\text{A.R. (\%)} = (\text{Labour force} / \text{Working age population}) \times 100$$

**Inactivity rate of the working age population:** rate that defines the relation between the working age inactive population and the working age population.

$$\text{I.R. (\%)} = (\text{Working age inactive population} / \text{Working age population}) \times 100$$

**Labour underutilisation rate:** rate that defines the relation between the labour underutilisation and the extended labour force.

$$\text{L.U.R. (\%)} = (\text{Labour underutilisation} / \text{Extended labour force}) \times 100$$

For the indicators selected for monthly dissemination, it was considered the age subgroup of those aged 16 to 74.

For a more detailed definition of the concepts and methodological features of this statistical operation, consult the [Labour Force Survey](#) or the [Monthly Employment and Unemployment Estimates](#) methodological documents (both only in Portuguese) available at Statistics Portugal website.



INSTITUTO NACIONAL DE ESTATÍSTICA  
STATISTICS PORTUGAL

press release

DIÍSTAQUE

---

#### Next Press Release

1 July 2024: “Monthly Employment and Unemployment Statistics – May 2024”.

2 July 2024: Eurostat News Release.

---