



12 January 2024

VITAL STATISTICS – Monthly data

December 2023

## DEATHS, LIVE BIRTHS AND MARRIAGES

### IN 2023, 117,809 DEATHS WERE RECORDED IN PORTUGAL, 5.7% LESS THAN IN 2022

In 2023, 117,809 deaths were registered in Portugal, 7,083 less (-5.7%) than in 2022 and 7,414 less (-5.9%) than in 2021. The number of deaths due to COVID-19 registered in 2023 was 2,109 (6,847 in 2022 and 11,991 in 2021), corresponding to 1.8% of total deaths.

In December 2023, the number of deaths was 11,151, higher than the number registered in November 2023 (1,617 more deaths; +17.0%), but lower than that registered in December 2022 (1,165 less deaths; -9.5%).

In November 2023, 7,371 children were born alive, corresponding to a decrease of 3.1% (232 less) compared to October 2023, but to an increase of 0.9% compared to November 2022 (7,304). The total number of live births registered in the first eleven months of 2023 (78,643) was higher than the value observed in the same period of 2022 (76,847), a further 1,796 (+2.3%).

In November 2023, the natural balance was -2,153, worsening in relation to the previous month (-1,641), but improving compared to the same month of 2022, when it reached -2,899. In the first eleven months of 2023, the cumulative value of the natural balance was -27,728, corresponding to an improvement from the value registered in the same period of 2022 (-35,484).

In November 2023, 1,770 marriages were celebrated, lower than the number registered in October 2023 (1,654 less; -48.3%) and lower than the number of marriages held in November 2022 (200 less marriages; -10.2%). In the first eleven months of 2023, 34,891 marriages were celebrated, 189 more (+0.5%) than in the same period of 2022.

---

In this press release, Statistics Portugal provides **preliminary data** on the number of deaths per month until December 2023<sup>1</sup>, and the number of live births and marriages per month until November 2023, that occurred in the national territory. The indicators published and analyzed in this Press Release are available on the Official Statistics Portal ([www.ine.pt](http://www.ine.pt)), with geographical breakdowns NUTS 2 and NUTS 3. The hyperlinks to these statistics can be found in the Excel file published together with this Press Release. The information is obtained from the Sistema Integrado do Registo e Identificação Civil (SIRIC) until January 5<sup>th</sup>, 2024. The data presented regarding the number of deaths due to COVID-19, whose source is the report “Number of New Cases and Deaths Per Day” of the Directorate-General for Health, were extracted on January 8<sup>th</sup>, 2024.

---

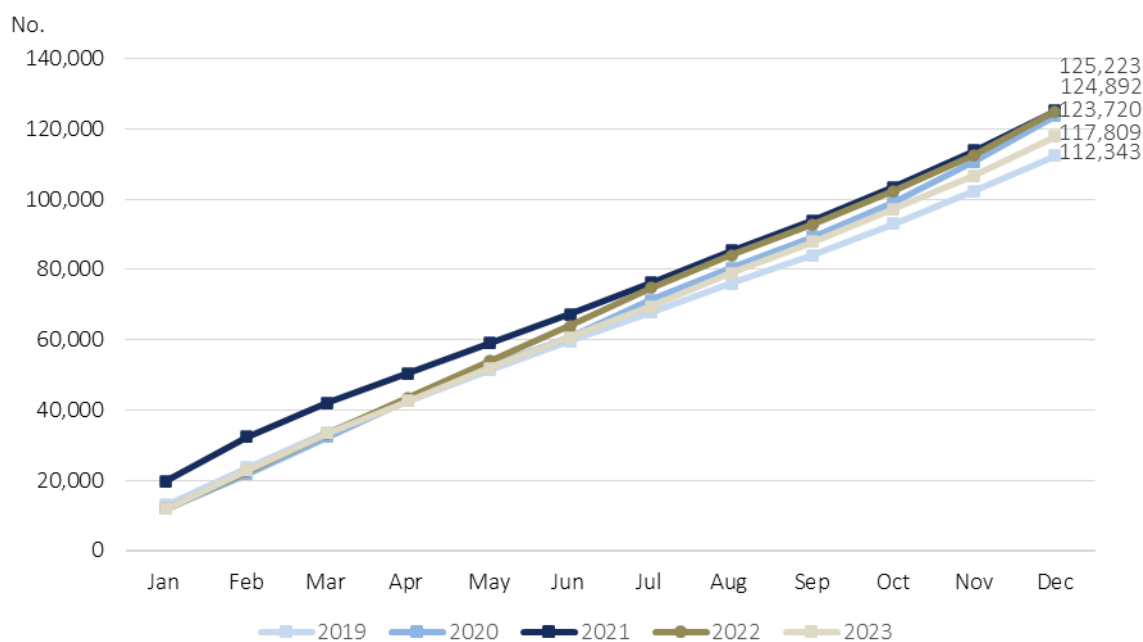
<sup>1</sup> After the release of mortality data for 2022 and considering the decrease of the impact of deaths due to COVID-19 on mortality, the analysis regarding the number of deaths per week was suspended. However, the release of indicators regarding the number of weekly deaths, by NUTS 3 breakdown, until the 52<sup>nd</sup> week of 2023, and daily deaths, by NUTS 2 breakdown, until December 31<sup>st</sup>, 2023, is assured.



Mortality decreased 9.5% when compared to the same month of 2022

In 2023, 117,809 deaths were registered in Portugal, 7,083 less (-5.7%) than in 2022 and 7,414 less (-5.9%) than in 2021. The number of deaths due to COVID-19 was 2,109 (6,847 in 2022 and 11,991 in 2021), corresponding to 1.8% of total deaths (5.5% in 2022 and 9.6% in 2021).

Figure 1. Monthly deaths (cumulative values), 2019 to 2023

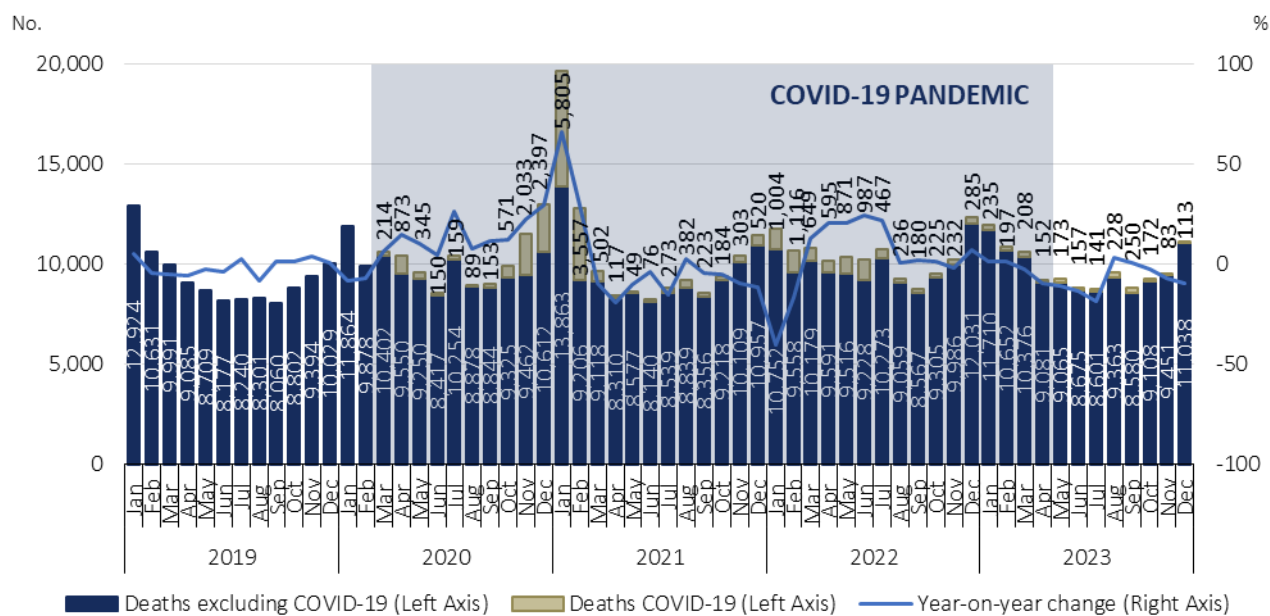


Source: Statistics Portugal, Deaths.

In January and February 2023, mortality increased 1.6% (189 and 175 more deaths, respectively) compared to the same months in 2022. From March 2023 onwards, and except for the months of August and September, the number of deaths was always lower than that recorded in 2022, mainly in the month of July, where there was a decrease of 18.6% compared to the same month of 2022.

In December 2023, there were 11,151 deaths, 1,617 more (+17.0%) than in the previous month. Compared to the same month of 2022, there was a reduction of 1,165 deaths (-9.5%). The number of deaths due to COVID-19 increased to 113 (30 more than in November 2023), accounting for 1.0% of all deaths. Compared to December 2022, there was a reduction of 172 deaths (-60.4%) due to COVID-19.

Figure 2. Deaths and year-on-year change, January 2019 to December 2023<sup>2</sup>



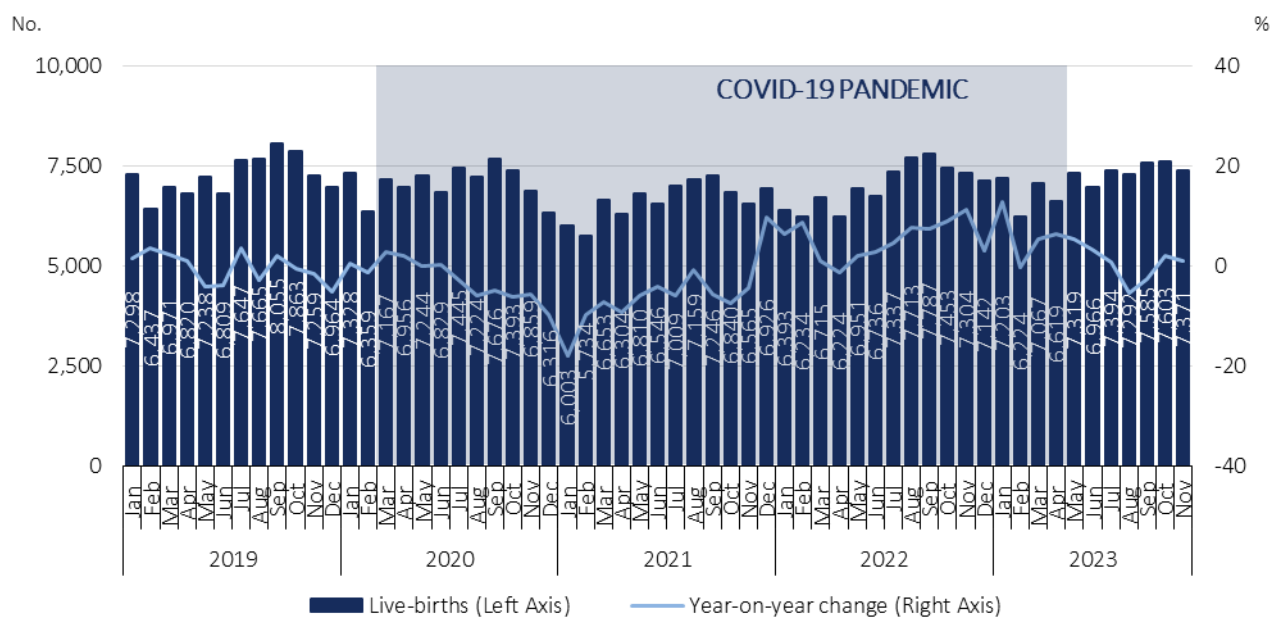
Source: Statistics Portugal, Deaths. Directorate-General of Health, [Number of New Cases and Deaths Per Day](#) (extracted on 08/01/2024).

<sup>2</sup> The World Health Organization (WHO) declared, on May 5<sup>th</sup>, the end of the global health emergency for COVID-19, accepting the recommendation of the emergency committee.

In November 2023, the number of live births increased 0.9% compared to November 2022

In November 2023, 7,371 children were born alive, corresponding to a decrease of 3.1% (232 less) compared to October 2023, but to an increase of 0.9% (67 more) compared to the same month of 2022.

Figure 3. Live births and year-on-year change, January 2019 to November 2023<sup>3</sup>



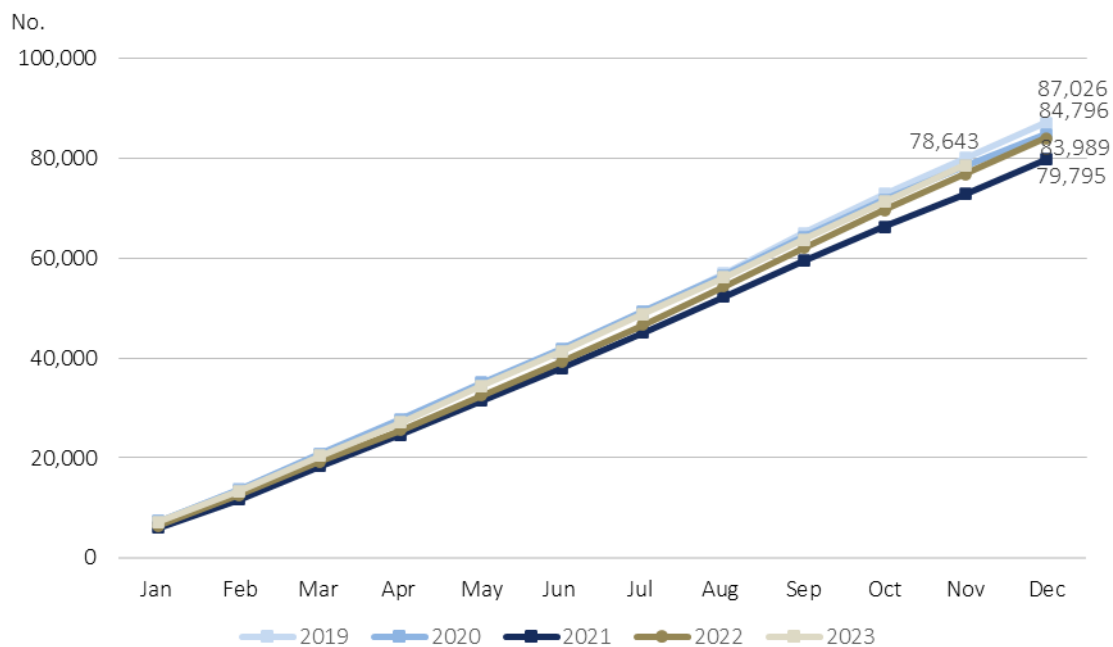
Source: Statistics Portugal, Live births.

The total number of live births registered in the first eleven months of 2023 (78,643) was higher than that observed in 2022 (76,847), a further 1,796 live births (+2.3%).

<sup>3</sup> The World Health Organization (WHO) declared, on May 5<sup>th</sup>, the end of the global health emergency for COVID-19, accepting the recommendation of the emergency committee.



Figure 4. Monthly live births (cumulative values), 2019 to 2023



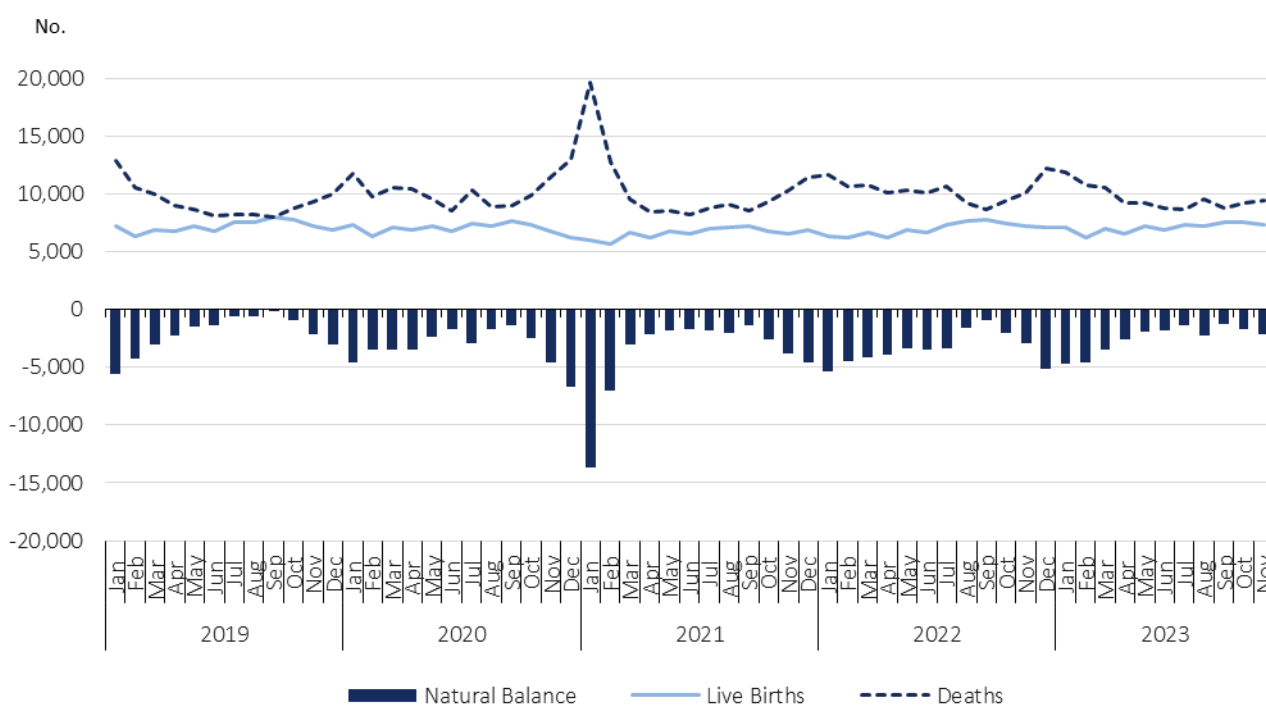
Source: Statistics Portugal, Live births.



## Natural balance of -2,153 in November 2023

In November 2023, the natural balance registered the value of -2,153, worsening compared to the value registered in October 2023 (-1,641) but improving compared with the same month of 2022 (-2,899).

Figure 5. Live births, deaths, and natural balance<sup>4</sup>, Portugal, January 2019 to November 2023

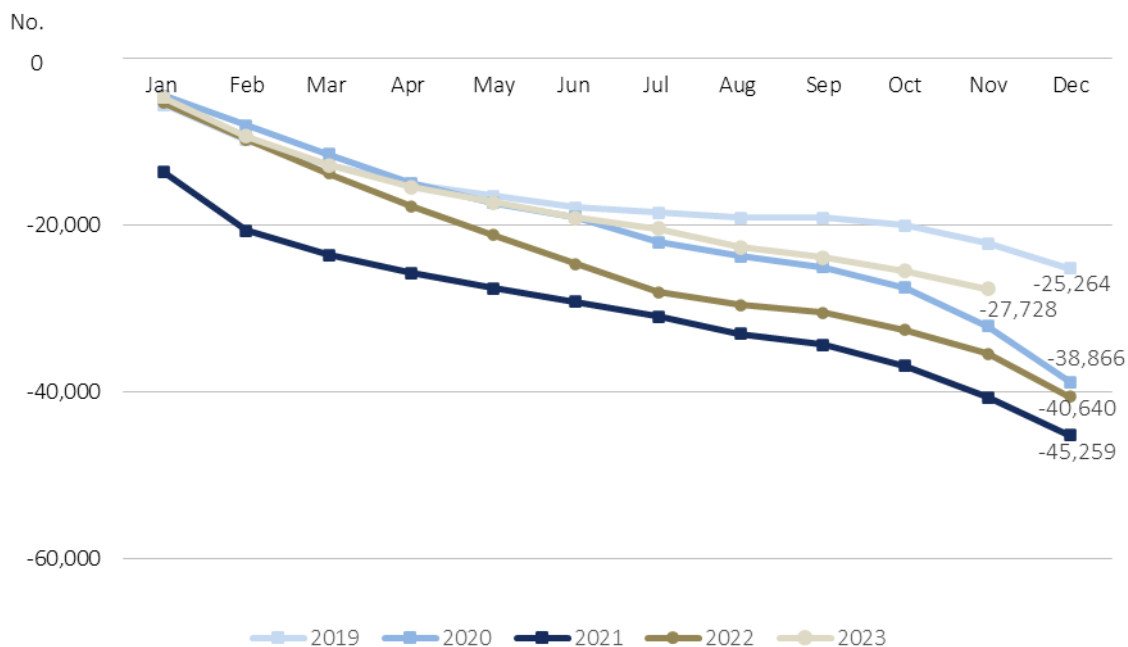


Source: Statistics Portugal, Live births, Deaths, and Demographic indicators.

In the first eleven months of 2023, the cumulative value of the natural balance was -27,728, improving from the same period of 2022 (-35,484).

<sup>4</sup> The natural balance is calculated based on the number of live births of mothers residing in Portugal and the number of deaths of residents in Portugal.

Figure 6. Monthly natural balance (cumulative values), 2019 to 2023



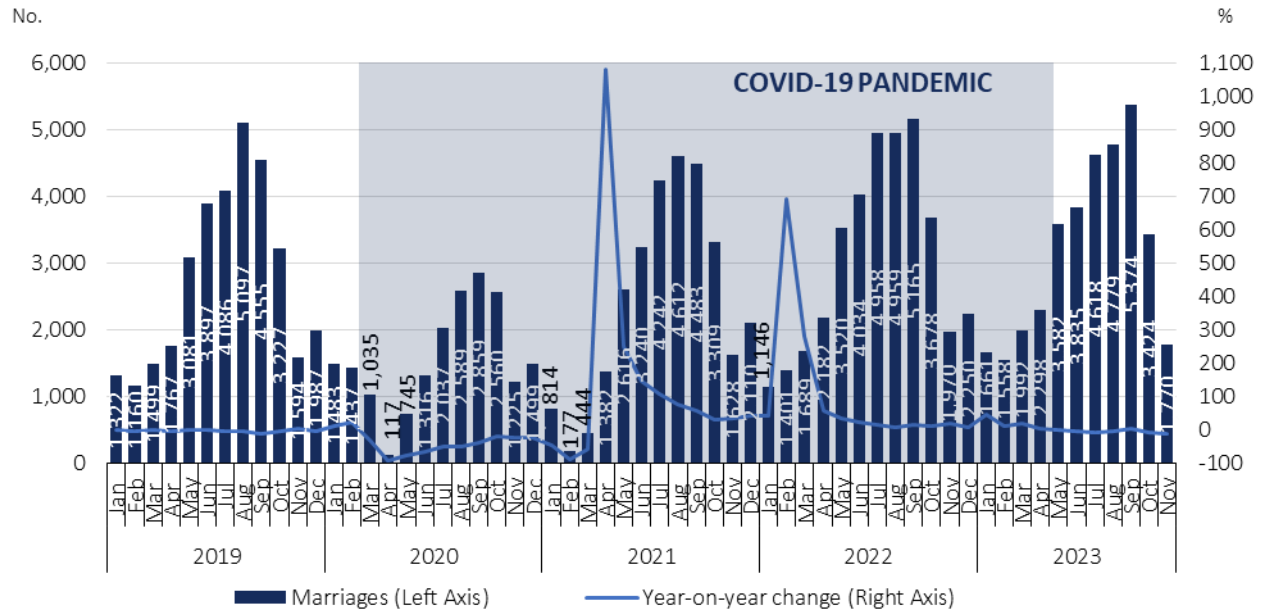
Source: Statistics Portugal, Live births, Deaths, and Demographic indicators.

In November 2023, the number of celebrated marriages decreased 10.2% compared to November 2022

In November 2023, 1,770 marriages were celebrated, lower than the number registered in October 2023 (1,654 less; -48.3%) and in November 2022 (200 less marriages; -10.2%).

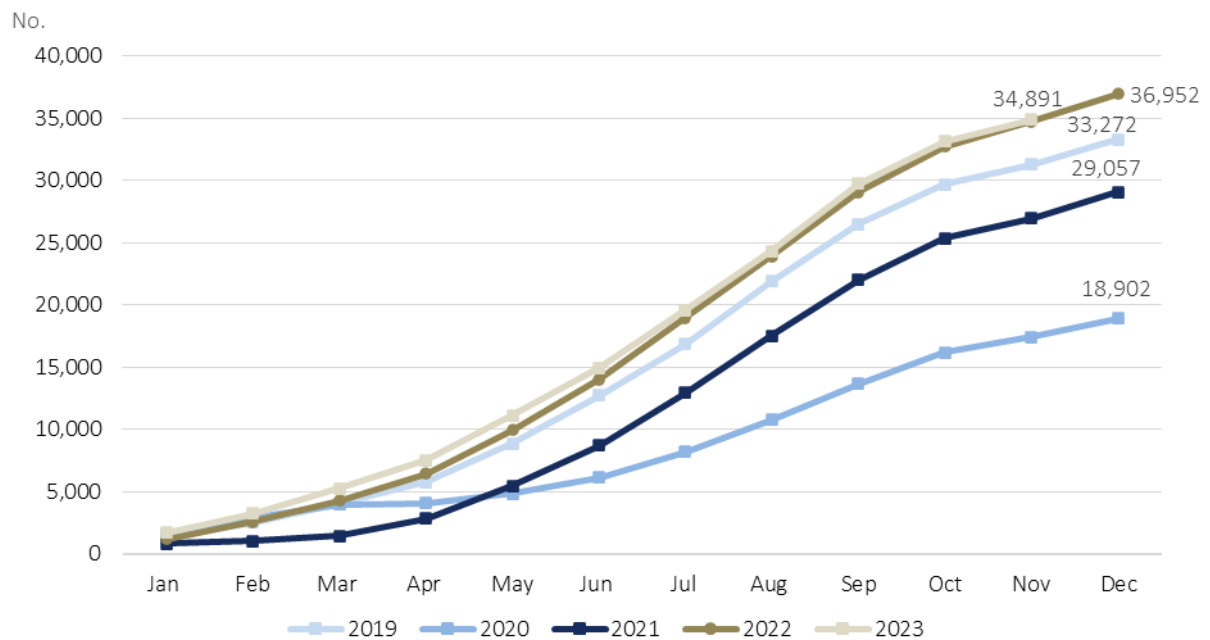
In the first eleven months of 2023, 34,891 marriages were celebrated, 189 more (+0.5%) than in the same period of 2022.

Figure 7. Marriages and year-on-year change, January 2019 to November 2023<sup>5</sup>



Source: Statistics Portugal, Marriages.

Figure 8. Monthly marriages (cumulative values), 2019 to 2023



Source: Statistics Portugal, Marriages.

<sup>5</sup> The World Health Organization (WHO) declared, on May 5<sup>th</sup>, the end of the global health emergency for COVID-19, accepting the recommendation of the emergency committee.





---

## TECHNICAL NOTE

Statistics Portugal releases the **preliminary** monthly **numbers** of deaths, live births, and marriages based on the information registered in the Civil Register Offices until January 5<sup>th</sup>, 2024. Indicators on the preliminary monthly number of live births, deaths, and marriages, from January to November 2023, with geographical breakdowns up to NUTS 3, by NUTS 2013 and NUTS 2024, as well as weekly number of deaths, until the 52<sup>nd</sup> week 2023, by NUTS 3 and daily number of deaths, until December 31<sup>st</sup>, 2023, by NUTS 2 are made available on the Statistics Portugal Website.

Data are obtained from statistical operations of direct and exhaustive collection on live births, deaths and marriages in Portuguese territory using facts that are subject to compulsory civil registration (birth and death) in the Sistema Integrado do Registo e Identificação Civil (SIRIC).

In addition to administrative information obtained from Civil Register Offices, Statistics Portugal collects an additional set of variables identified as statistically pertinent to the National Statistic System (NSS) and the European Statistical System (EES). Data is recorded and sent electronically, in compliance with the requirements set out by Statistics Portugal and laid down in liaison with the Instituto de Registos e Notariado (IRN) and the Instituto de Gestão Financeira e Equipamentos da Justiça (IGFEJ).

Data on the number of deaths due to COVID-19 are also used, whose source is the “Number of New Cases and Deaths Per Day” Report of the Directorate-General for Health.

## DEFINITIONS

**Marriage:** Contract signed by two persons that intend to start a family in full partnership and cohabitation according to legislation. Note: marriage can be held between persons from different or same sex.

**Live birth:** This is the complete expulsion or extraction from the mother's body, irrespective of the duration of the pregnancy, of a product of fertilization that, after separation, breathes or shows any other signs of life, such as a beating of the heart or umbilical cord or actual contraction of any muscle subject to voluntary movement, whether the umbilical cord has been severed and whether the placenta is retained.

**Death:** The permanent disappearance of vital functions.

**Natural balance:** The difference between the number of live births and the number of deaths during a given period.

**Year-on-year change:** The year-on-year change compares the level of a variable between the reference month and the same month of the previous year.

---

Detailed methodological information available at: [www.ine.pt](http://www.ine.pt), option Products, Metadata system.

Detailed statistical information available at: [www.ine.pt](http://www.ine.pt), option Products, Statistical data, database, theme Population, subtheme Births and natality rates and subtheme Mortality and life expectancy.



---

**Next Press Release**

16<sup>th</sup> February 2024: “Vital Statistics - Monthly data – January 2024”.

---