



INSTITUTO NACIONAL DE ESTATÍSTICA  
STATISTICS PORTUGAL

press release



October 13, 2023  
TRANSPORT ACTIVITIES  
Air Transport Flash Statistics  
August 2023

## MOVEMENT OF PASSENGERS AT NATIONAL AIRPORTS CONTINUES TO REACH HISTORICAL HIGHS

In **August 2023**, 7.2 million passengers and 17.5 thousand tonnes of freight and mail were handled at national airports, corresponding to year-on-year variations of +13.2% and -8.2%, respectively, compared to August 2022. Vis-à-vis August 2019, there were increases of 11.0% and 3.2%, in the same order.

Since the beginning of 2023, there have been monthly historical highs of passengers at national airports. In August 2023, there was a daily average of 112.9 thousand passengers disembarked, a higher value than the one registered in August 2022 (99.4 thousand; +13.5%) and 11.5% above the one recorded in August 2019 (101.3 thousand).

Between **January and August 2023**, the number of passengers increased by 23.1% compared with the same period of 2022, while the movement of freight and mail recorded a decrease (-2.4%). Vis-à-vis the same period of 2019, there were increases of 11.7% and 7.6%, respectively.

Considering the volume of passengers disembarked and embarked on international flights between January and August 2023, the United Kingdom was the main country of origin and destination of flights, with year-on-year growths of 19.4% in the number of disembarked passengers and 20.2% in the number of embarked passengers, vis-à-vis the same period of 2022. France occupied the second position, with increases of 20.9% and 21.4%, in the same order, followed by Spain, with significant increases compared to the same period of 2022 (+40.5% as country of origin of flights and +40.1% as country of destination).

---

### Monthly traffic at national airports

In **August 2023**, 25.1 thousand commercial aircrafts landed at national airports, corresponding to 7.2 million passengers (embarked, disembarked and direct transits) and 17.5 thousand tonnes of freight and mail were handled (+9.6%, +13.2% and -8.2%, respectively, vis-à-vis August 2022). Compared to August 2019, there were increases of 8.1%, 11.0% and 3.2%, in the same order.

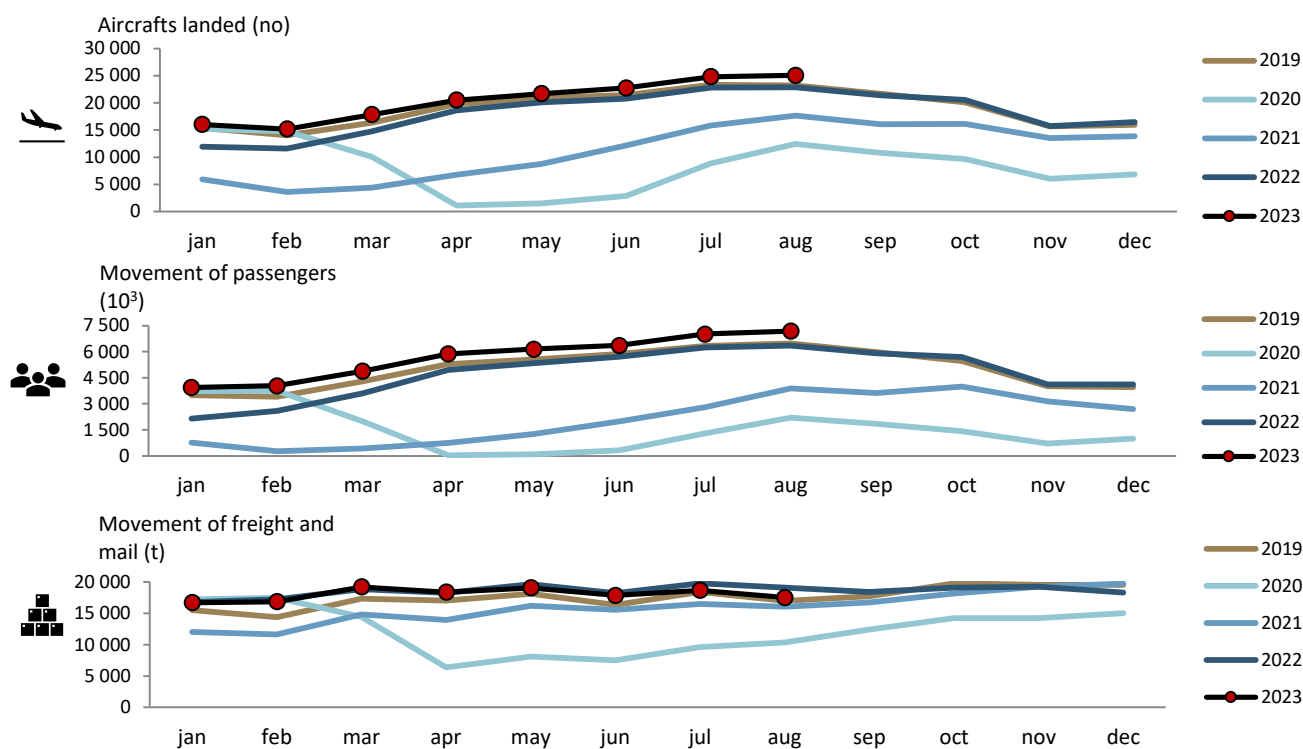


INSTITUTO NACIONAL DE ESTATÍSTICA  
STATISTICS PORTUGAL

press release



Figure 1. Aircrafts landed, passengers and freight/mail movement at national airports

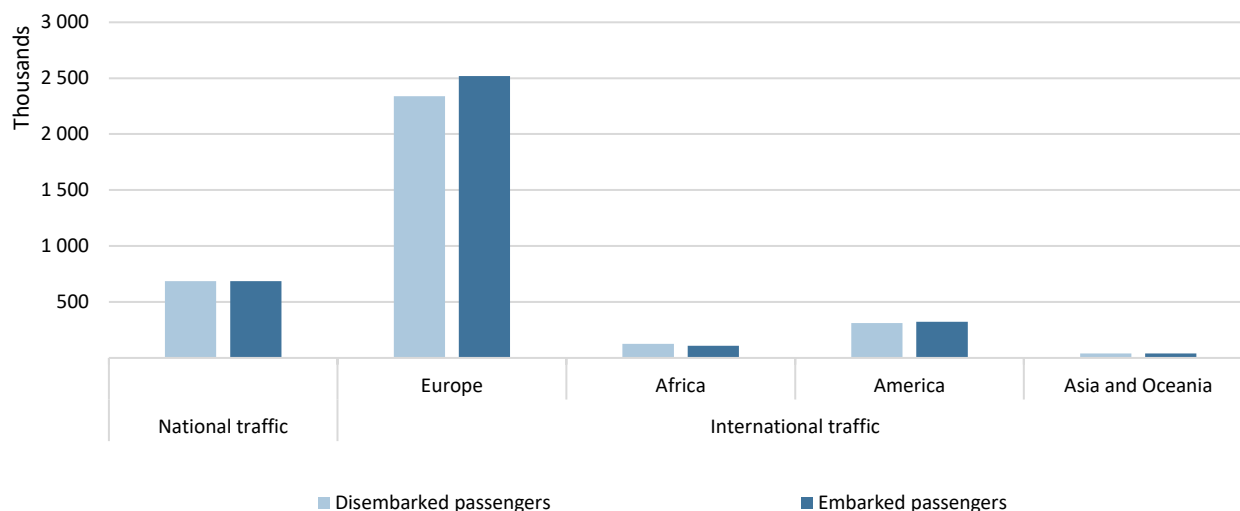


Source: Survey to airports and aerodromes (ANA/ANAC/Statistics Portugal)

In August 2023, 80.4% of passengers disembarked at national airports corresponded to international traffic, reaching 2.8 million passengers, mostly from the European continent (66.8% of the total), corresponding to an increase of 16.2% compared to August 2022. The American continent was the second main origin, concentrating 8.9% of the total passengers disembarked (+9.7%).

Regarding embarked passengers, 81.4% corresponded to international traffic, totalling nearly 3 million passengers, having as main destination airports in the European continent (68.6% of the total), recording an increase of 15.0% compared to August 2022. Airports in the American continent were the second main destination of embarked passengers (8.8% of the total; +12.7%).

Figure 2. Passengers disembarked and embarked at national airports by nature of traffic and Continent of origin/destination – August 2023

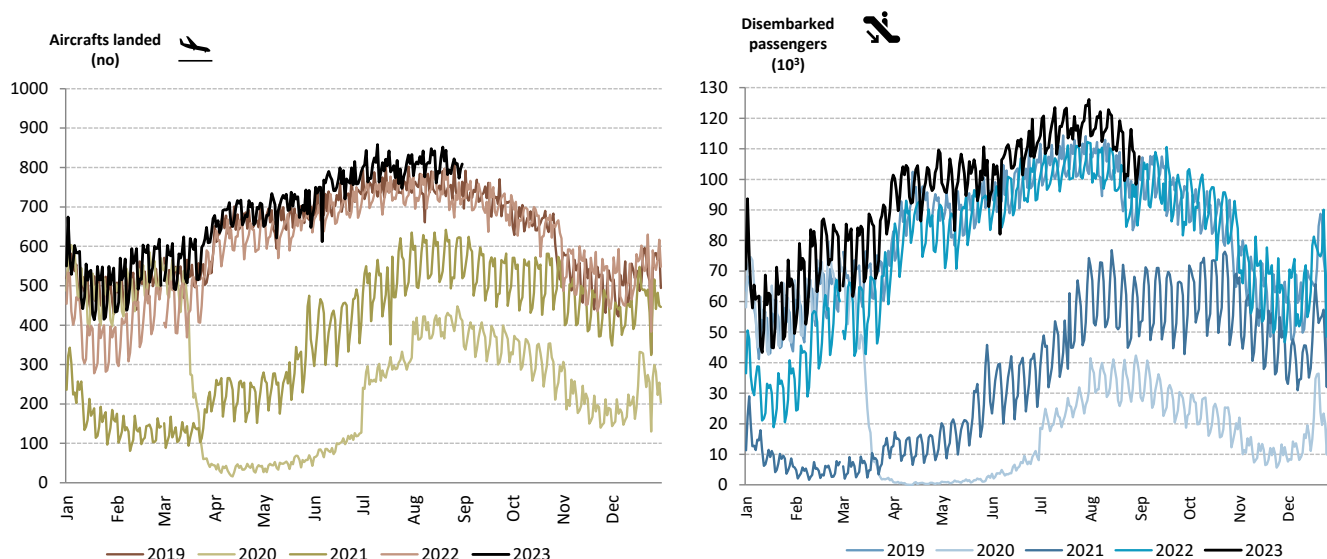


Source: Survey to airports and aerodromes (ANA/ANAC/Statistics Portugal)

The daily movement of aircrafts and passengers is typically influenced by seasonal and weekly cycle fluctuations and was significantly affected by the impact of the pandemic in 2020 and 2021, showing a recovery over 2022.

Since the beginning of 2023, there have been monthly historical highs of passengers at national airports. In August 2023, there was a daily average of 112.9 thousand passengers disembarked, a higher value than the one registered in August 2022 (99.4 thousand; +13.5%) and 11.5% above the one recorded in August 2019 (101.3 thousand).

Figure 3. Aircrafts landed and disembarked passengers at national airports – daily



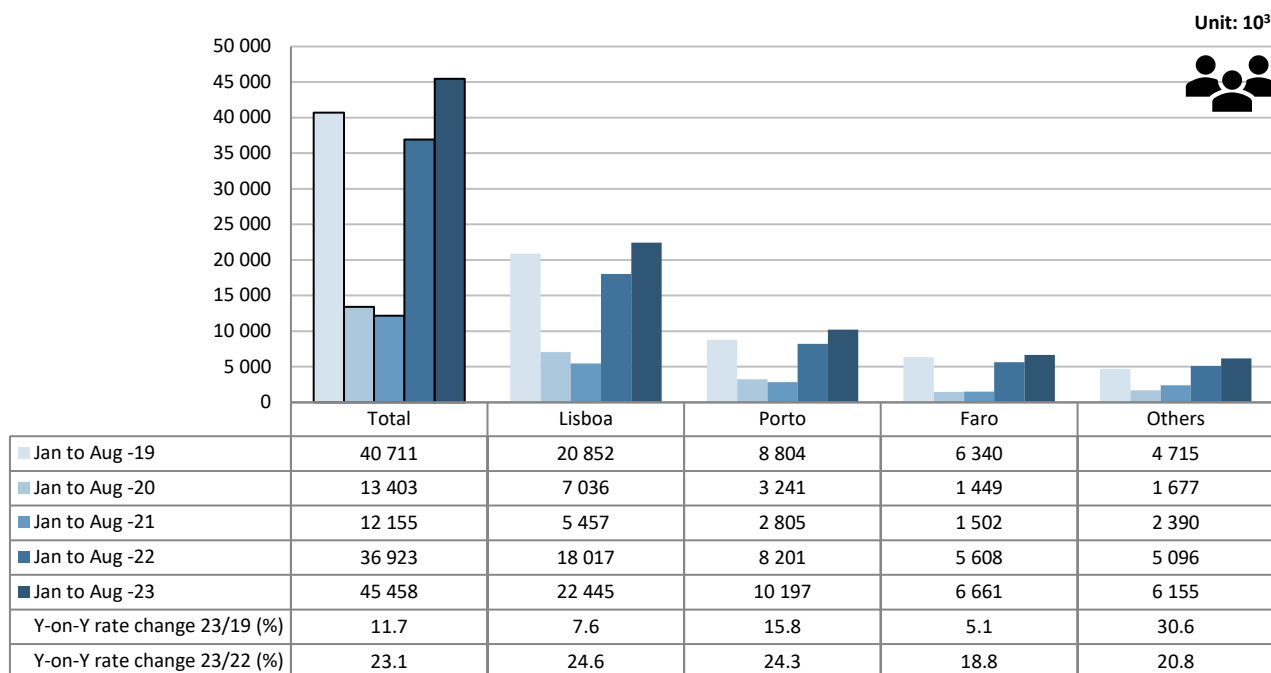
Source: Survey to airports and aerodromes (ANA/ANAC/Statistics Portugal)



## Accumulated traffic at national airports

Between **January and August 2023**, the movement of passengers at national airports increased by 23.1% compared with the same period of 2022 (+11.7% vis-à-vis the same period in 2019). The movement of passengers in Lisboa airport corresponded to 49.4% of total handled passengers (22.4 million), increasing by 24.6% vis-à-vis the same period of 2022 (+7.6% compared to 2019). Porto airport concentrated 22.4% of total passengers handled and increased by 24.3% (+15.8% vis-à-vis the same period in 2019). Faro airport increased by 18.8% (+5.1% compared to the same period of 2019).

Figure 4. Movement of passengers at national airports



Source: Survey to airports and aerodromes (ANA/ANAC/Statistics Portugal)

Considering the volume of passengers disembarked and embarked on international flights between January and August 2023, the United Kingdom was the main country of origin and destinations of flights, with year-on-year growths of 19.4% in the number of disembarked passengers and 20.2% in the number of embarked passengers, vis-à-vis the same period of 2022. France occupied the second position, with increases of 20.9% and 21.4%, in the same order, followed by Spain, with significant increases compared to the same period of 2022 (+40.5% as country of origin of flights and +40.1% as country of destination).



Table 1. Main countries of origin and destination of flights with passengers at national airports

Ranking	Country of origin (of the flight)	Jan to Aug 2023	
		Passengers disembarked (10 <sup>3</sup> )	Y-on-Y growth rate (%)
1	United Kingdom	3 264.9	19.4
2	France	2 988.4	20.9
3	Spain	2 387.3	40.5
4	Germany	1 616.5	9.3
5	Italy	1 059.0	38.7

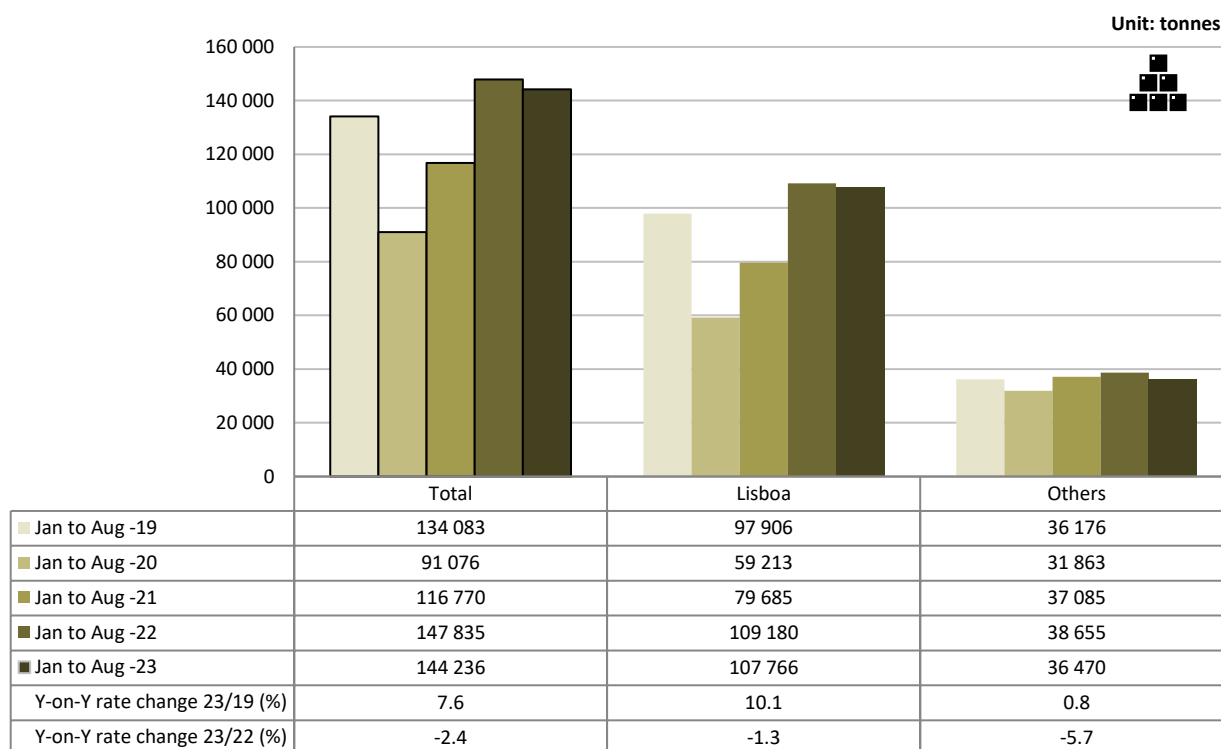
Ranking	Country of destination (of the flight)	Jan to Aug 2023	
		Passengers embarked (10 <sup>3</sup> )	Y-on-Y growth rate (%)
1	United Kingdom	3 193.8	20.2
2	France	2 944.9	21.4
3	Spain	2 334.0	40.1
4	Germany	1 607.8	9.4
5	Italy	1 049.0	38.5

Source: Survey to airports and aerodromes (ANA/ANAC/Statistics Portugal)

Between **January and August 2023**, there was a decrease in freight and mail handled at national airports (-2.4%; +7.6% compared with the same period of 2019). The movement of freight and mail at Lisboa airport represented 74.7% of the total, reaching 107.8 thousand tonnes (-1.3%; +10.1% compared with the same period of 2019).

Considering the group of other airports, the movement of freight and mail decreased by 5.7% (+0.8% vis-à-vis the same period of 2019).

Figure 5. Freight and mail movement at national airports



Source: Survey to airports and aerodromes (ANA/ANAC/Statistics Portugal)



INSTITUTO NACIONAL DE ESTATÍSTICA  
STATISTICS PORTUGAL

press release



## METHODOLOGICAL NOTES

In this Press Release the following statistical data are used:

2023: preliminary results;

2022: provisional results;

2019, 2020 and 2021: definitive results.

**Main national airports** (considered in this Press Release as national airports): Lisboa, Porto, Faro, Ponta Delgada, Madeira, Porto Santo, Beja, Horta, Flores, Santa Maria, Terceira, Pico, Graciosa, São Jorge, Corvo, Portimão, Bragança, Cascais, Vila Real and Viseu.

**SOURCES:** Survey to airports and aerodromes (ANA/ANAC/Statistics Portugal)

## MAIN CONCEPTS:

**Commercial aviation** - Air transport flight performed for the public transport of passengers, freight or mail, for remuneration and for hire.

**Commercial air traffic** - Movement of aircrafts, passengers, freight and mail in commercial aviation.

## Monthly indicators at Statistics Portugal portal:

[Aircrafts landed \(No.\) in airports by Geographic localization, Type of traffic and Nature of traffic; Monthly](#)

[Aircrafts landed \(No.\) in airports by Continent of origin; Monthly](#)

[Aircrafts take-offs \(No.\) in airports by Geographic localization, Type of traffic and Nature of traffic; Monthly](#)

[Disembarked passengers \(No.\) in airports by Geographic localization, Type of traffic and Nature of traffic; Monthly](#)

[Disembarked passengers \(No.\) in Airports by Continent of origin; Monthly](#)

[Embarked passengers \(No.\) in airports by Geographic localization, Type of traffic and Nature of traffic; Monthly](#)

[Embarked passengers \(No.\) in airports by Destination continent; Monthly](#)

[Passengers in direct transit \(No.\) in airports by Geographic localization, Type of traffic and Nature of traffic; Monthly](#)

[Disembarked load \(t\) in airports by Geographic localization, Type of traffic and Nature of traffic; Monthly](#)

[Embarked load \(t\) in airports by Geographic localization, Type of traffic and Nature of traffic; Monthly](#)

[Disembarked mail \(t\) in airports by Geographic localization, Type of traffic and Nature of traffic; Monthly](#)

[Embarked mail \(t\) in airports by Geographic localization, Type of traffic and Nature of traffic; Monthly](#)





INSTITUTO NACIONAL DE ESTATÍSTICA  
STATISTICS PORTUGAL

press release



#### ACRONYMS AND DESIGNATIONS

ANA	Portugal Airports, S.A.
ANAC	National Civil Aviation Authority
INE	Statistics Portugal

---

**Next Press Release (monthly)** - Air Transport Flash Statistics – November 13, 2023

**Next Press Release (quarterly)** - Transport activities (Q3 2023) – December 6, 2023

---