



September 14, 2023
TRANSPORT ACTIVITIES
Air Transport Flash Statistics
July 2023

AVERAGE DAILY MOVEMENT OF PASSENGERS AT NATIONAL AIRPORTS REACHED HISTORICAL HIGH

In **July 2023**, 7.0 million passengers and 18.7 thousand tonnes of freight and mail were handled at national airports, corresponding to year-on-year variations of +12.5% and -5.7%, respectively, compared to July 2022. Vis-à-vis July 2019, there were increases of 10.8% and 1.5%, in the same order.

Since the beginning of 2023, there have been monthly historical highs of passengers at national airports. In July 2023, there was a daily average of 117.2 thousand passengers disembarked at national airports, a higher value than the one registered in July 2022 (104.3 thousand; +12.4%) and 11.1% above the one recorded in July 2019 (105.5 thousand), corresponding to the highest average daily value since records began.

Between **January and July 2023**, the number of passengers increased by 25.2% compared with the same period of 2022, while the movement of freight and mail recorded a decrease (-1.6%). Vis-à-vis the same period of 2019, there were increases of 11.8% and 8.2%, respectively.

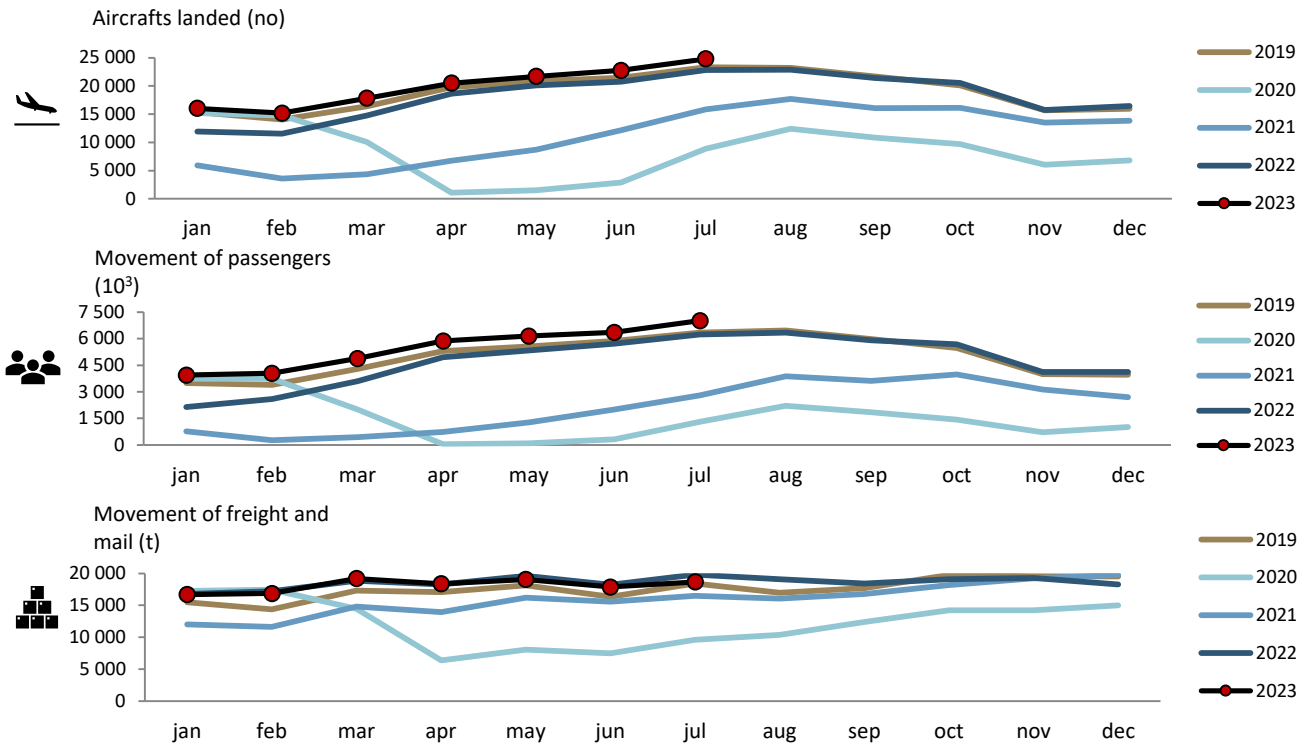
Considering the volume of passengers disembarked and embarked on international flights between January and July 2023, the United Kingdom was the main country of origin and destination of flights, with year-on-year growths of 20.8% in the number of disembarked passengers and 22.4% in the number of embarked passengers, vis-à-vis the same period of 2022. France occupied the second position, with increases of 21.6% and 22.2%, in the same order, followed by Spain, with significant increases compared to the same period of 2022 (+42.6% as country of origin of flights and +42.8% as country of destination).

Monthly traffic at national airports

In **July 2023**, 24.8 thousand commercial aircrafts landed at national airports, corresponding to 7.0 million passengers (embarked, disembarked and direct transits) and 18.7 thousand tonnes of freight and mail were handled (+8.7%, +12.5% and -5.7%, respectively, vis-à-vis July 2022). Compared to July 2019, there were increases of 6.4%, 10.8% and 1.5%, in the same order.



Figure 1. Aircrafts landed, passengers and freight/mail movement at national airports



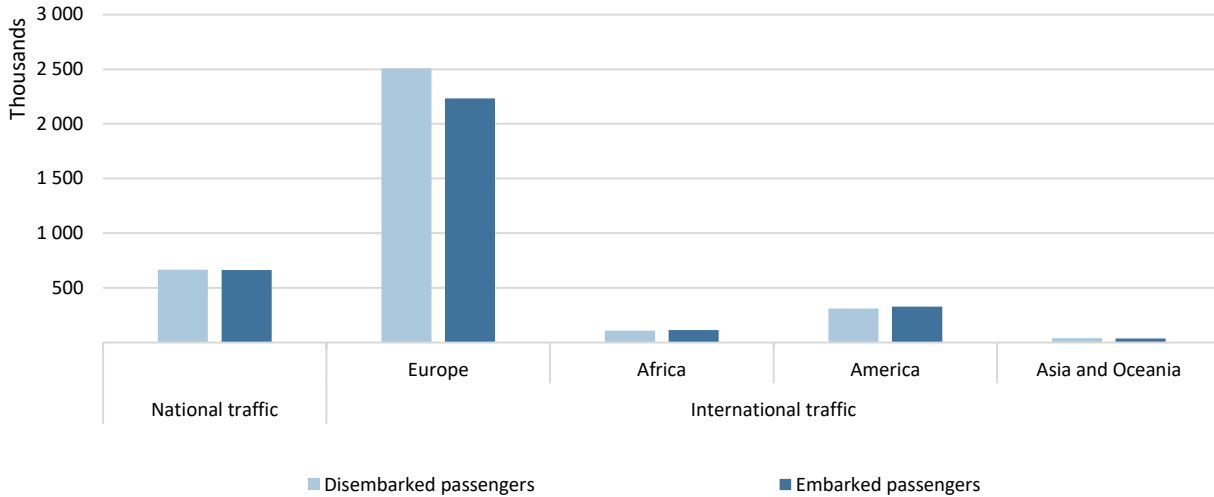
Source: Survey to airports and aerodromes (ANA/ANAC/Statistics Portugal)

In July 2023, 81.7% of passengers disembarked at national airports corresponded to international traffic, reaching nearly 3 million passengers, mostly from the European continent (69.0% of the total), corresponding to an increase of 13.0% compared to July 2022. The American continent was the second main origin, concentrating 8.6% of the total passengers disembarked (+9.1%).

Regarding embarked passengers, 80.3% corresponded to international traffic, totalling 2.7 million passengers, having as main destination airports in the European continent (66.1% of the total), recording an increase of 13.7% compared to July 2022. Airports in the American continent were the second main destination of embarked passengers (9.8% of the total; +13.6%).



Figure 2. Passengers disembarked and embarked at national airports by nature of traffic and Continent of origin/destination – July 2023

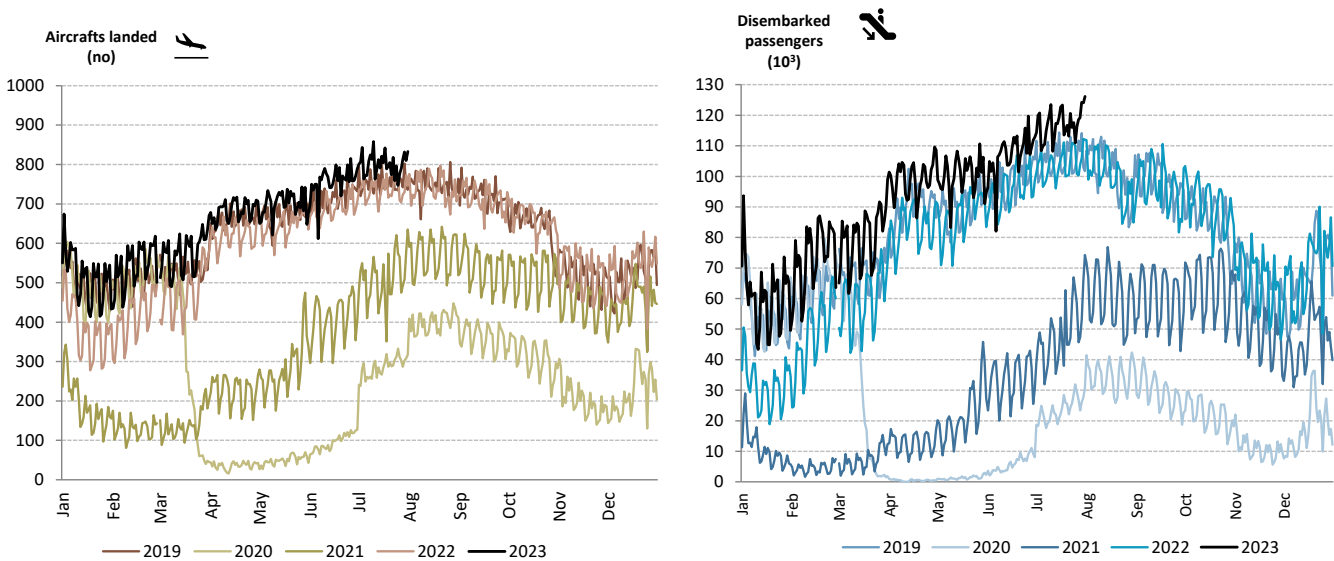


Source: Survey to airports and aerodromes (ANA/ANAC/Statistics Portugal)

The daily movement of aircrafts and passengers is typically influenced by seasonal and weekly cycle fluctuations and was significantly affected by the impact of the pandemic in 2020 and 2021, showing a recovery over 2022.

Since the beginning of 2023, there have been monthly historical highs of passengers at national airports. In July 2023, there was a daily average of 117.2 thousand passengers disembarked at national airports, a higher value than the one registered in July 2022 (104.3 thousand; +12.4%) and 11.1% above the one recorded in July 2019 (105.5 thousand), corresponding to the highest average daily value since records began.

Figure 3. Aircrafts landed and disembarked passengers at national airports – daily



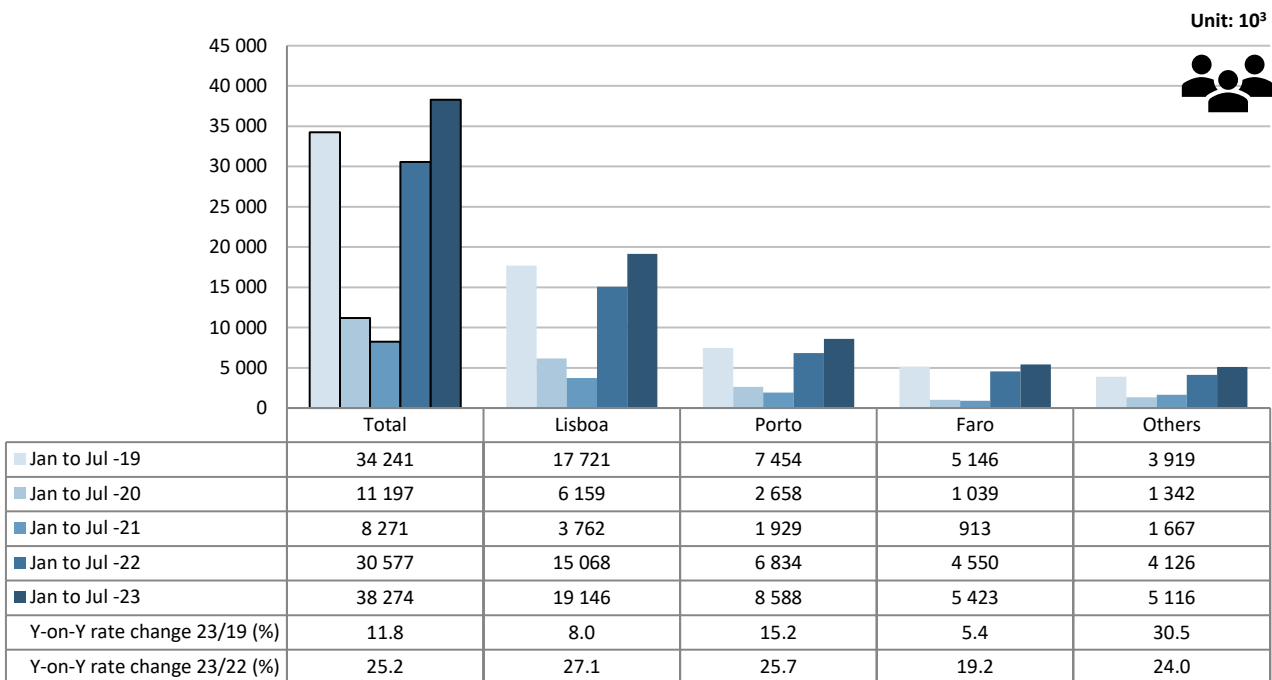
Source: Survey to airports and aerodromes (ANA/ANAC/Statistics Portugal)



Accumulated traffic at national airports

Between **January and July 2023**, the movement of passengers at national airports increased by 25.2% compared with the same period of 2022 (+11.8% vis-à-vis the same period in 2019). The movement of passengers in Lisboa airport corresponded to 50.0% of total handled passengers (19.1 million), increasing by 27.1% vis-à-vis the same period of 2022 (+8.0% compared to 2019). Porto airport concentrated 22.4% of total passengers handled and increased by 25.7% (+15.2% vis-à-vis the same period in 2019). Faro airport increased by 19.2% (+5.4% compared to the same period of 2019).

Figure 4. Movement of passengers at national airports



Source: Survey to airports and aerodromes (ANA/ANAC/Statistics Portugal)

Considering the volume of passengers disembarked and embarked on international flights between January and July 2023, the United Kingdom was the main country of origin and destinations of flights, with year-on-year growths of 20.8% in the number of disembarked passengers and 22.4% in the number of embarked passengers, vis-à-vis the same period of 2022. France occupied the second position, with increases of 21.6% and 22.2%, in the same order, followed by Spain, with significant increases compared to the same period of 2022 (+42.6% as country of origin of flights and +42.8% as country of destination).



DIÍSTAQUE

Table 1. Main countries of origin and destination of flights with passengers at national airports

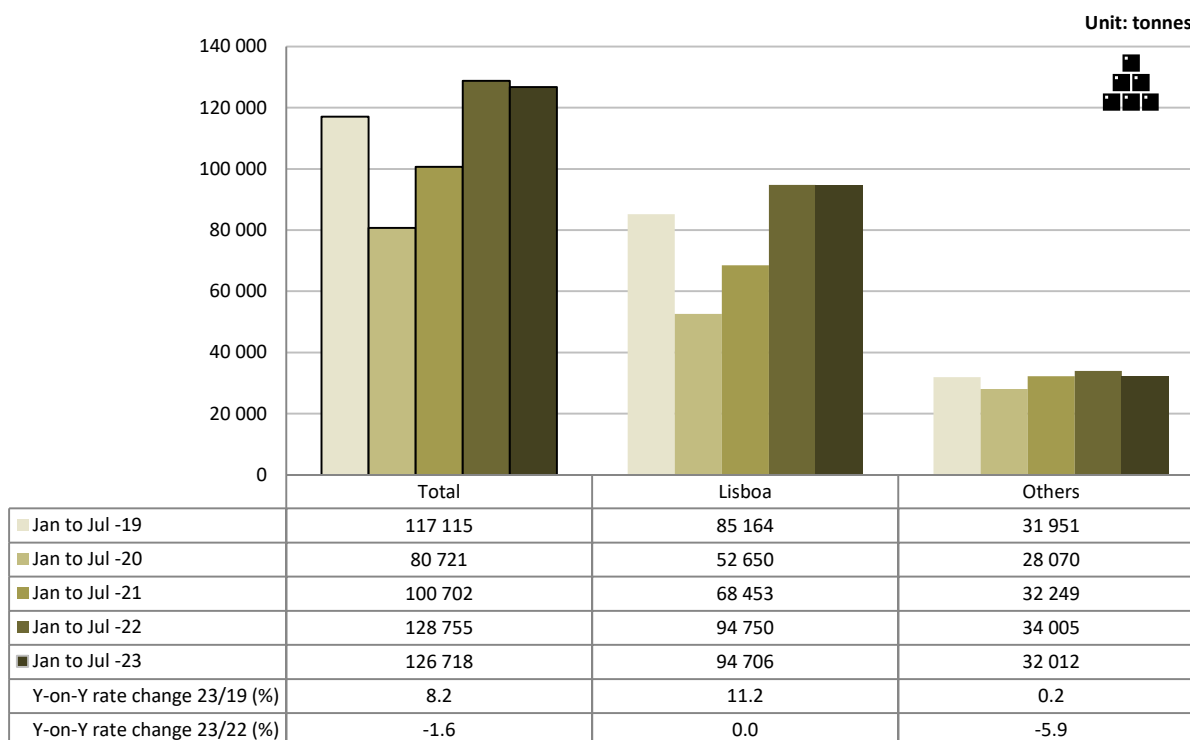
Ranking	Country of origin (of the flight)	Jan to Jul 2023		Ranking	Country of destination (of the flight)	Jan to Jul 2023	
		Passengers disembarked (10 ³)	Y-on-Y growth rate (%)			Passengers embarked (10 ³)	Y-on-Y growth rate (%)
1	United Kingdom	2 741.1	20.8	1	United Kingdom	2 656.0	22.4
2	France	2 570.8	21.6	2	France	2 465.4	22.2
3	Spain	2 014.4	42.6	3	Spain	1 955.5	42.8
4	Germany	1 370.3	9.6	4	Germany	1 344.7	10.0
5	Italy	905.3	42.2	5	Italy	893.6	41.9

Source: Survey to airports and aerodromes (ANA/ANAC/Statistics Portugal)

Between **January and July 2023**, there was a decrease in freight and mail handled at national airports (-1.6%; +8.2% compared with the same period of 2019). The movement of freight and mail at Lisboa airport represented 74.7% of the total, reaching a similar value to the one recorded in the same period of the previous year (94.7 thousand tonnes) and representing an increase of +11.2% compared with the same period of 2019.

Considering the group of other airports, the movement of freight and mail decreased by 5.9% (+0.2% vis-à-vis the same period of 2019).

Figure 5. Freight and mail movement at national airports



Source: Survey to airports and aerodromes (ANA/ANAC/Statistics Portugal)



METHODOLOGICAL NOTES

In this Press Release the following statistical data are used:

2023: preliminary results;

2022: provisional results;

2019, 2020 and 2021: definitive results.

Main national airports (considered in this Press Release as national airports): Lisboa, Porto, Faro, Ponta Delgada, Madeira, Porto Santo, Beja, Horta, Flores, Santa Maria, Terceira, Pico, Graciosa, São Jorge, Corvo, Portimão, Bragança, Cascais, Vila Real and Viseu.

SOURCES: Survey to airports and aerodromes (ANA/ANAC/Statistics Portugal)

MAIN CONCEPTS:

Commercial aviation - Air transport flight performed for the public transport of passengers, freight or mail, for remuneration and for hire.

Commercial air traffic - Movement of aircrafts, passengers, freight and mail in commercial aviation.

Monthly indicators at Statistics Portugal portal:

[Aircrafts landed \(No.\) in airports by Geographic localization, Type of traffic and Nature of traffic; Monthly](#)

[Aircrafts landed \(No.\) in airports by Continent of origin; Monthly](#)

[Aircrafts take-offs \(No.\) in airports by Geographic localization, Type of traffic and Nature of traffic; Monthly](#)

[Disembarked passengers \(No.\) in airports by Geographic localization, Type of traffic and Nature of traffic; Monthly](#)

[Disembarked passengers \(No.\) in Airports by Continent of origin; Monthly](#)

[Embarked passengers \(No.\) in airports by Geographic localization, Type of traffic and Nature of traffic; Monthly](#)

[Embarked passengers \(No.\) in airports by Destination continent; Monthly](#)

[Passengers in direct transit \(No.\) in airports by Geographic localization, Type of traffic and Nature of traffic; Monthly](#)

[Disembarked load \(t\) in airports by Geographic localization, Type of traffic and Nature of traffic; Monthly](#)

[Embarked load \(t\) in airports by Geographic localization, Type of traffic and Nature of traffic; Monthly](#)

[Disembarked mail \(t\) in airports by Geographic localization, Type of traffic and Nature of traffic; Monthly](#)

[Embarked mail \(t\) in airports by Geographic localization, Type of traffic and Nature of traffic; Monthly](#)



INSTITUTO NACIONAL DE ESTATÍSTICA
STATISTICS PORTUGAL

press release



ACRONYMS AND DESIGNATIONS

ANA	Portugal Airports, S.A.
ANAC	National Civil Aviation Authority
INE	Statistics Portugal

Next Press Release (monthly) - Air Transport Flash Statistics – October 13, 2023

Next Press Release (quarterly) - Transport activities (Q3 2023) – December 6, 2023
