



16<sup>th</sup> June 2023

VITAL STATISTICS – Monthly data

May 2023

## DEATHS, LIVE BIRTHS AND MARRIAGES

### NUMBER OF DEATHS DECREASES 11.7% COMPARED TO THE SAME MONTH OF 2022

In May 2023, the number of deaths was 9,168, lower than the number registered in April 2023 (44 less deaths; -0.5%) and in May 2022 (1,219 less deaths; -11.7%). In that month, the number of deaths due to COVID-19 increased to 171 (21 more deaths than in April 2023), accounting for 1.9% of all deaths. Compared to May 2022, there was a decrease of 700 deaths due to COVID-19.

In April 2023, 6,568 children were born alive, corresponding to an increase of 5.5% compared to April 2022 (6,224). The total number of live births registered in the first four months of 2023 (27,028) was higher than the value observed in the same period of 2022 (25,566), representing a further 1,462 live births (+5.7%).

In April 2023, the natural balance was -2,622, improving in relation to the same month of 2022, when it reached -3,942. In the first four months of 2023, the cumulative value of the natural balance was -15,452, corresponding to an improvement from the value registered in the same period of 2022 (-17,791).

In April 2023, 2,295 marriages were celebrated, corresponding to an increase of 5.2% compared to the number of marriages held in April 2022 (113 more marriages). In the first four months of 2023, 7,496 marriages were celebrated, 1,078 more (+16.8%) than in the same period of 2022.

---

In this press release, Statistics Portugal provides **preliminary data** on the number of deaths per month until May 2023<sup>1</sup>, and the number of live births and marriages per month until April 2023, that occurred in the national territory. The indicators published and analyzed in this Press Release are available on the Official Statistics Portal ([www.ine.pt](http://www.ine.pt)), with geographical breakdowns NUTS 2 and NUTS 3. The hyperlinks to these statistics can be found in the Excel file published together with this Press Release. The information is obtained from the Sistema Integrado do Registo e Identificação Civil (SIRIC) until June 9<sup>th</sup>, 2023. The data presented regarding the number of deaths due to COVID-19, whose source is the report “Number of New Cases and Deaths Per Day” of the Directorate-General for Health, were extracted on June 5<sup>th</sup>, 2023.

---

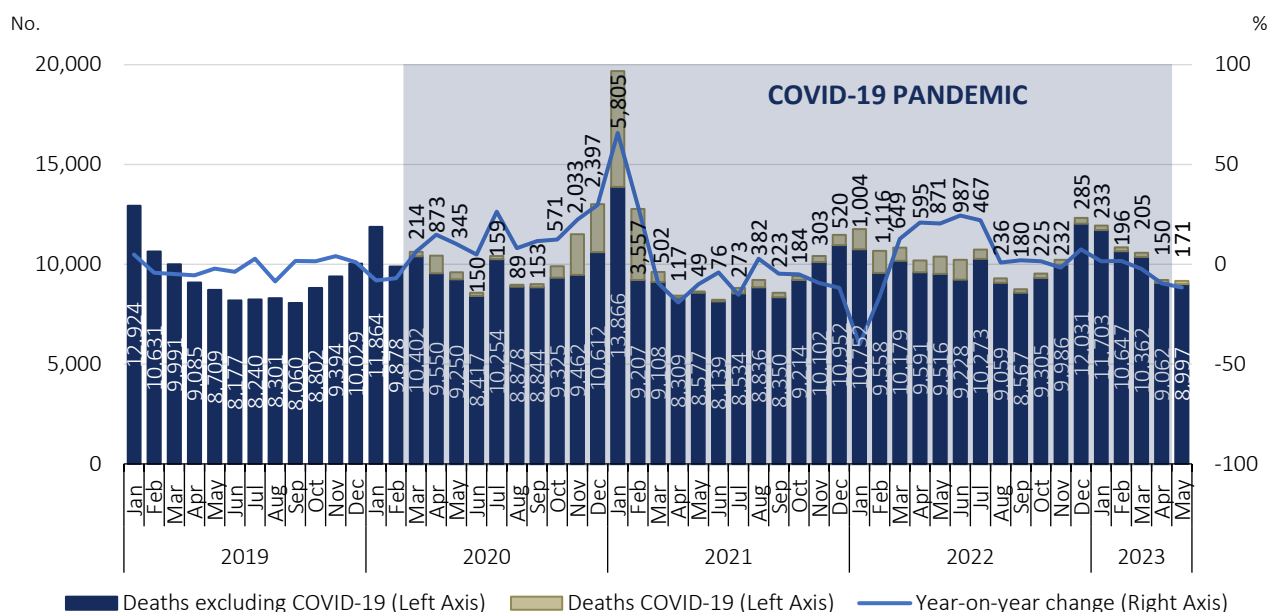
<sup>1</sup> After the release of mortality data for 2022 and considering the decrease of the impact of deaths due to COVID-19 on mortality, the analysis regarding the number of deaths per week was suspended. However, the release of indicators regarding the number of weekly deaths, by NUTS 3 breakdown, until the 22<sup>nd</sup> week of 2023, and daily deaths, by NUTS 2 breakdown, until June 4<sup>h</sup>, 2023 is assured.



In May 2023, mortality decreased 11.7% when compared to the same month of 2022

In May 2023, there were 9,168 deaths, 44 less than in the previous month. Compared to the same month of 2022, the number of deaths decreased (1,219 less deaths; -11.7%). The number of deaths due to COVID-19 increased to 171 (21 more than in April 2023), accounting for 1.9% of all deaths. Compared to May 2022, there was a decrease of 700 deaths (-80.4%) due to COVID-19.

Figure 1. Deaths and year-on-year change, January 2019 to May 2023<sup>2</sup>



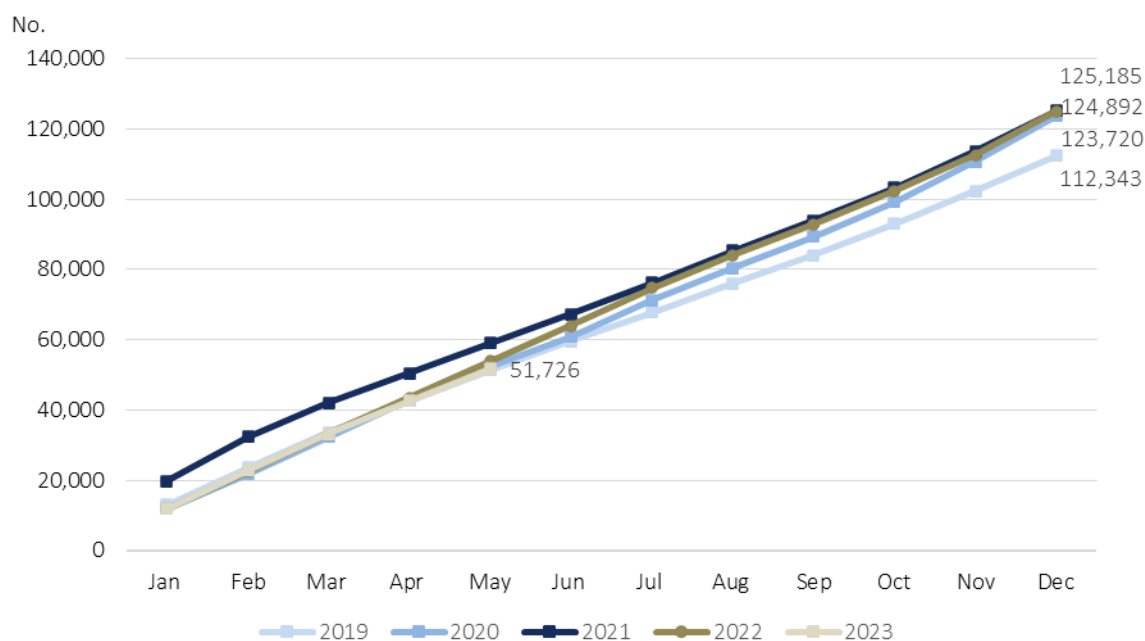
Source: Statistics Portugal, Deaths. Directorate-General of Health, [Number of New Cases and Deaths Per Day](#) (extracted on 05/06/2023).

<sup>2</sup> The World Health Organization (WHO) declared, on May 5<sup>th</sup>, the end of the global health emergency for COVID-19, accepting the recommendation of the emergency committee.



The number of deaths registered in the first five months of 2023 (51,726) was lower than the value registered in same period of 2022 (2,105 less deaths; -3.9%).

Figure 2. Monthly deaths (cumulative values), 2019, 2020, 2021, 2022 and 2023



Source: Statistics Portugal, Deaths.

The “excess mortality” indicator calculated by Eurostat, compares the number of deaths recorded each month, in the European Union (EU-27) and EFTA countries, with the average number of monthly deaths in the period 2016-2019. In March 2023, and contrary to what had happened in February, the EU-27 recorded excess mortality again. Of the 27 member states, ten had excess mortality, namely: Austria, Cyprus, Denmark, Germany, Greece, Ireland, Malta, Spain, The Netherlands, and Portugal.

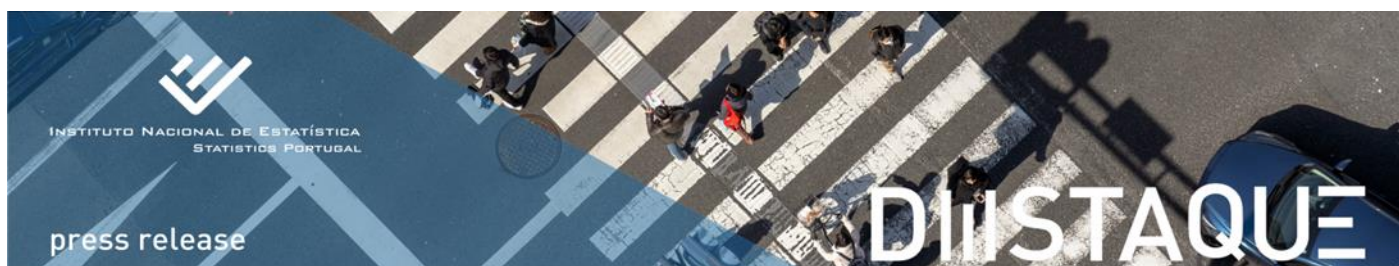


Figure 3. Monthly excess mortality in EU-27 and EFTA countries, December 2022 to March 2023  
(2016-2019 average = 100)

Countries	2022	2023		
	December	January	February	March
<b>EU 27</b>	<b>119.8</b>	<b>103.6</b>	<b>98.3</b>	<b>100.3<sup>(1)</sup></b>
Austria	130.1	114.0	100.5	109.1
Belgium	119.8	105.4	95.1	97.4
Bulgaria	95.1	86.6	90.9	89.7
Croatia	109.5	94.2	97.5	90.6
Cyprus	121.0	107.8	111.7	108.4
Czechia	123.7	108.2	92.9	94.0
Denmark	123.2	111.8	98.1	100.8
Estonia	124.0	110.1	92.4	92.7
Finland	127.7	109.4	101.8	100.0
France	126.4	105.3	98.8	99.9
Germany	138.2	114.2	98.7	104.2
Greece	110.7	104.9	111.0	110.3
Hungary	108.0	90.1	93.3	99.2
Ireland	125.7	115.4	100.8	109.1
Italy	113.7	96.5	101.6	X
Latvia	117.9	107.7	96.4	86.1
Lithuania	120.6	98.5	77.2	93.3
Luxembourg	109.6	115.9	90.7	97.6
Malta	111.2	103.8	101.7	105.8
Netherlands	123.4	113.4	104.2	112.3
Poland	117.8	105.0	91.5	98.8
<b>Portugal</b>	<b>114.7</b>	<b>96.8</b>	<b>105.7</b>	<b>104.1</b>
Romania	88.8	91.2	89.3	87.3
Slovakia	121.2	100.9	90.4	96.4
Slovenia	122.3	105.8	95.7	97.7
Spain	110.0	98.4	105.9	106.4
Sweden	119.7	108.7	91.5	96.2
Iceland	129.8	128.8	110.5	103.1
Liechtenstein	84.0	111.0	100.7	98.5
Norway	121.9	109.9	96.5	99.8
Switzerland	125.0	105.5	94.8	104.4

(1) Estimated value.

X Value not available.

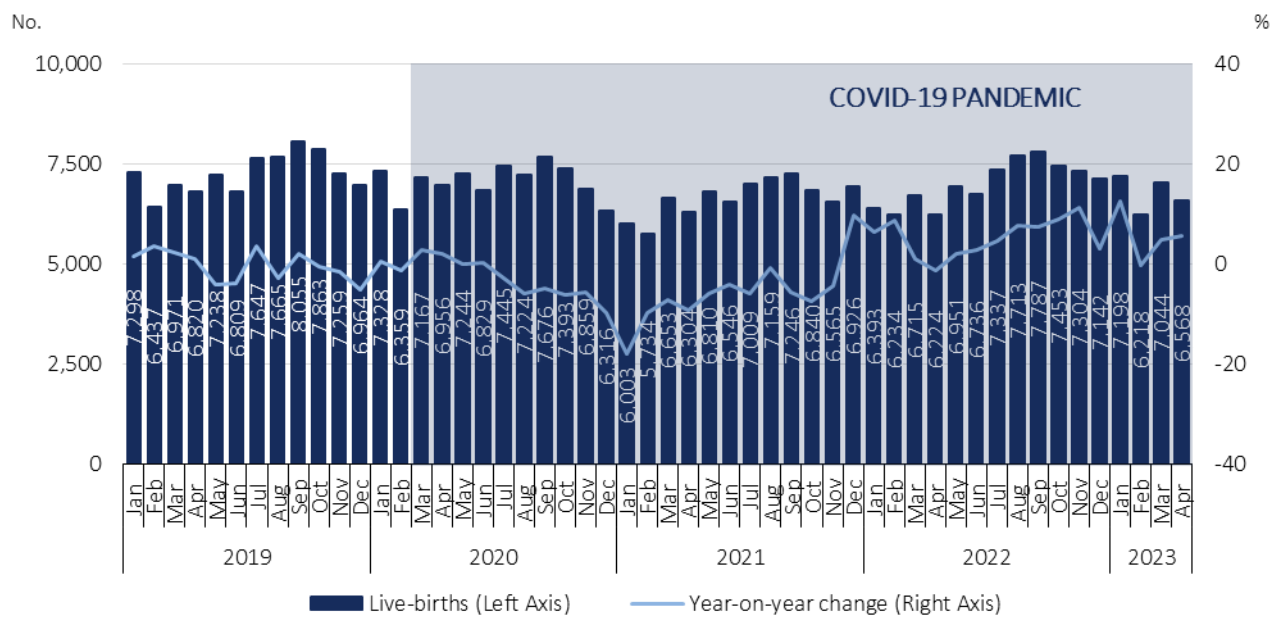
Source: Eurostat, [Excess mortality – monthly data](#) (extracted on 12/06/2023).



In April 2023, the number of live births increased 5.5% compared to April 2022

In April 2023, 6,568 children were born alive, corresponding to an increase of 5.5% (344 more) when compared to the same month of 2022.

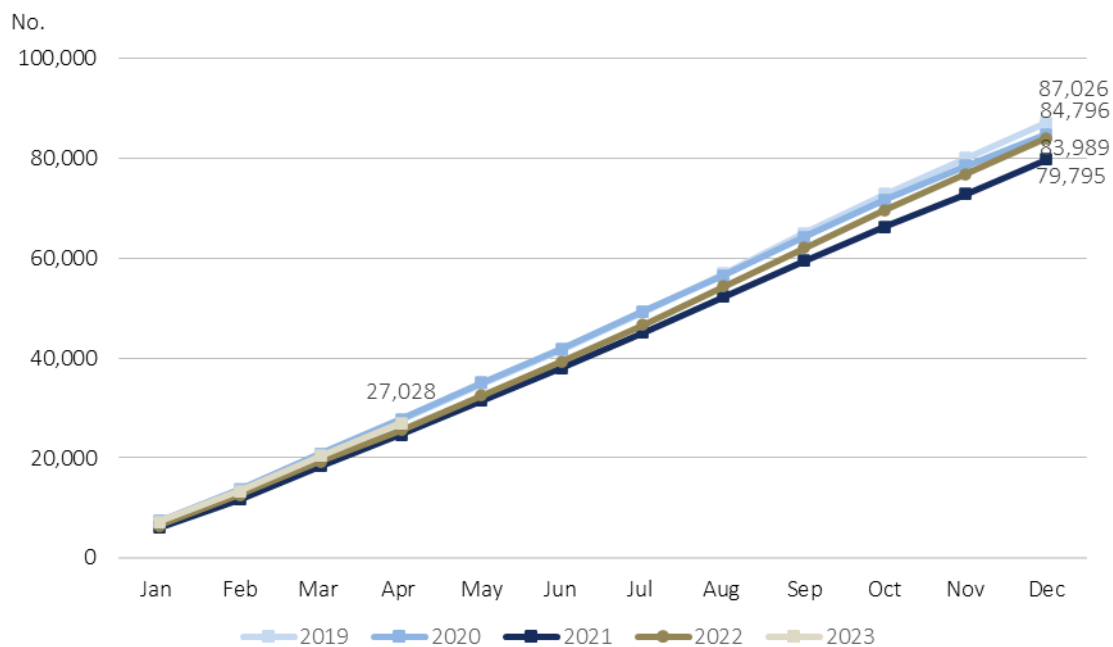
Figure 4. Live births and year-on-year change, January 2019 to April 2023



Source: Statistics Portugal, Live births.

The total number of live births registered in the first four months of 2023 (27,028) was higher than that observed in 2022 (25,566), representing a further 1,452 live births (+5.7%).

Figure 5. Monthly live births (cumulative values), 2019, 2020, 2021, 2022 and 2023



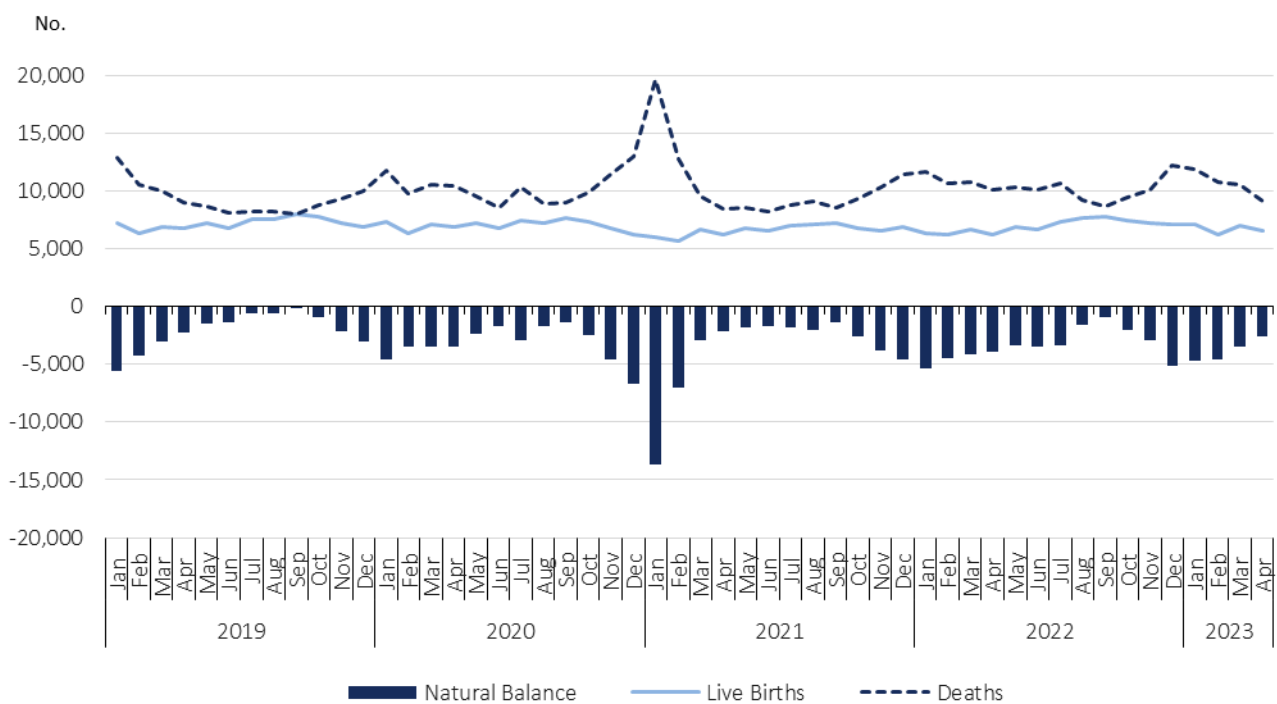
Source: Statistics Portugal, Live births.



In April 2023, the natural balance was -2,622

In April 2023, the natural balance registered the value of -2,622, improving when compared to the value registered in same month of 2022 (-3,942).

Figure 6. Live births, deaths, and natural balance<sup>3</sup>, Portugal, January 2019 to April 2023

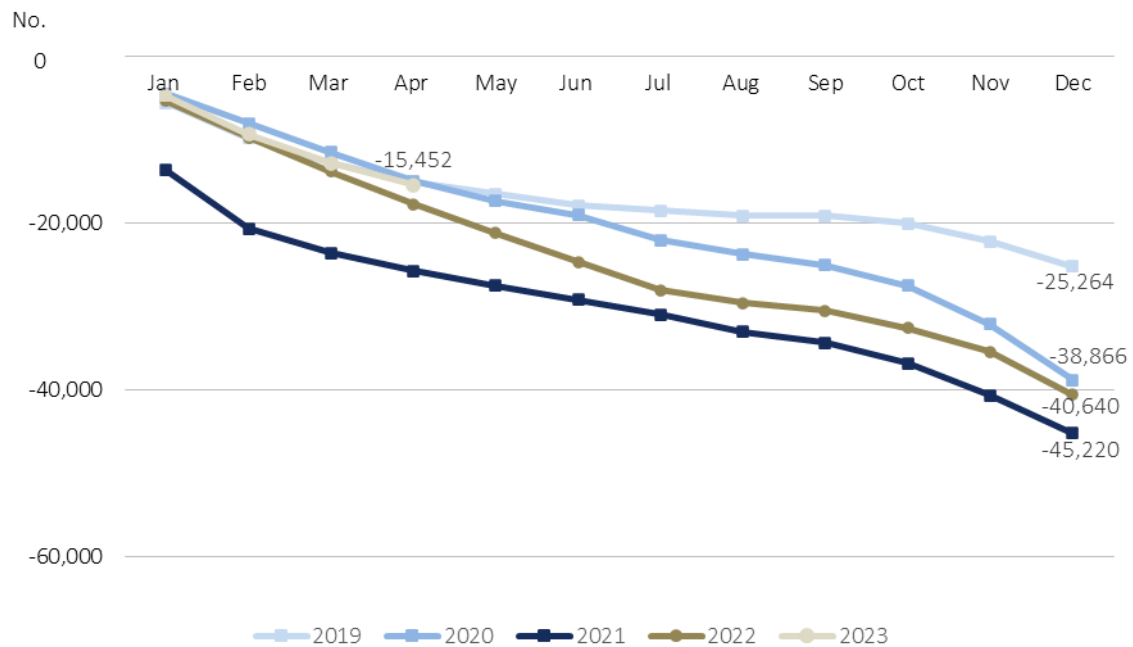


Source: Statistics Portugal, Live births, Deaths, and Demographic indicators.

In the first four months of 2023, the cumulative value of the natural balance was -15,452, improving the figure registered in same period of 2022 (-17,791).

<sup>3</sup> The natural balance is calculated based on the number of live births of mothers residing in Portugal and the number of deaths of residents in Portugal.

Figure 7. Monthly natural balance (cumulative values), 2019, 2020, 2021, 2022 and 2023



Source: Statistics Portugal, Live births, Deaths, and Demographic indicators.

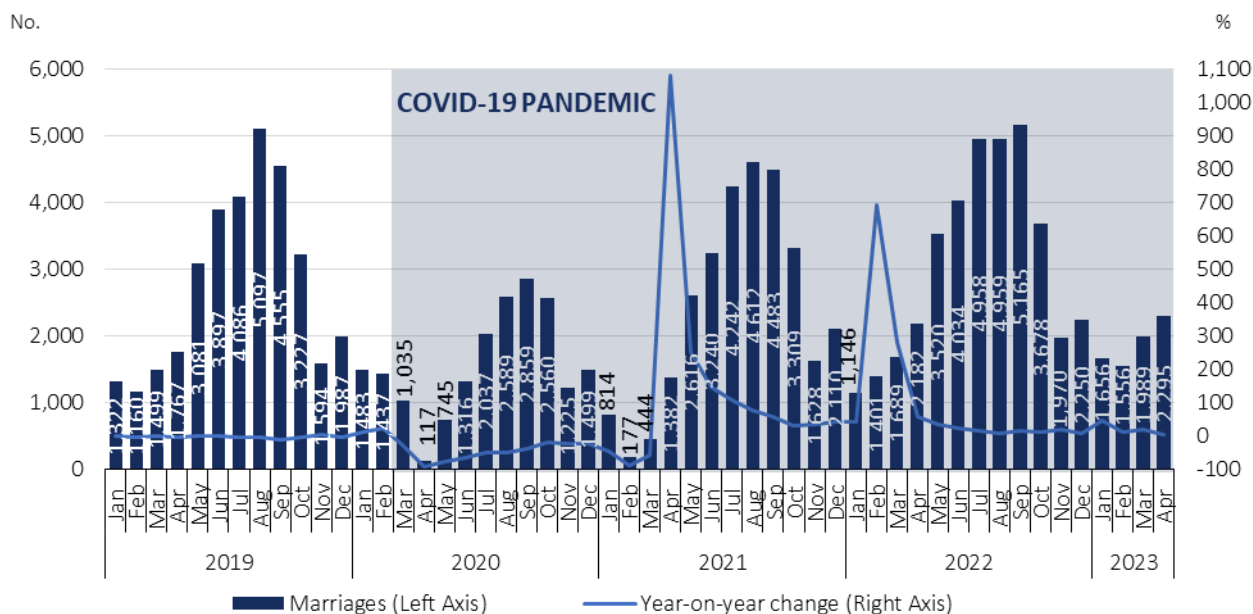
In April 2023, the number of celebrated marriages increased 5.2% compared to April 2022

In April 2023, 2,295 marriages were celebrated, corresponding to an increase of 5.2% compared to the number of marriages celebrated in April 2022 (113 more marriages).

In the first four months of 2023, 7,496 marriages were celebrated, 1,078 more (+16.8%) than in the same period of 2022.

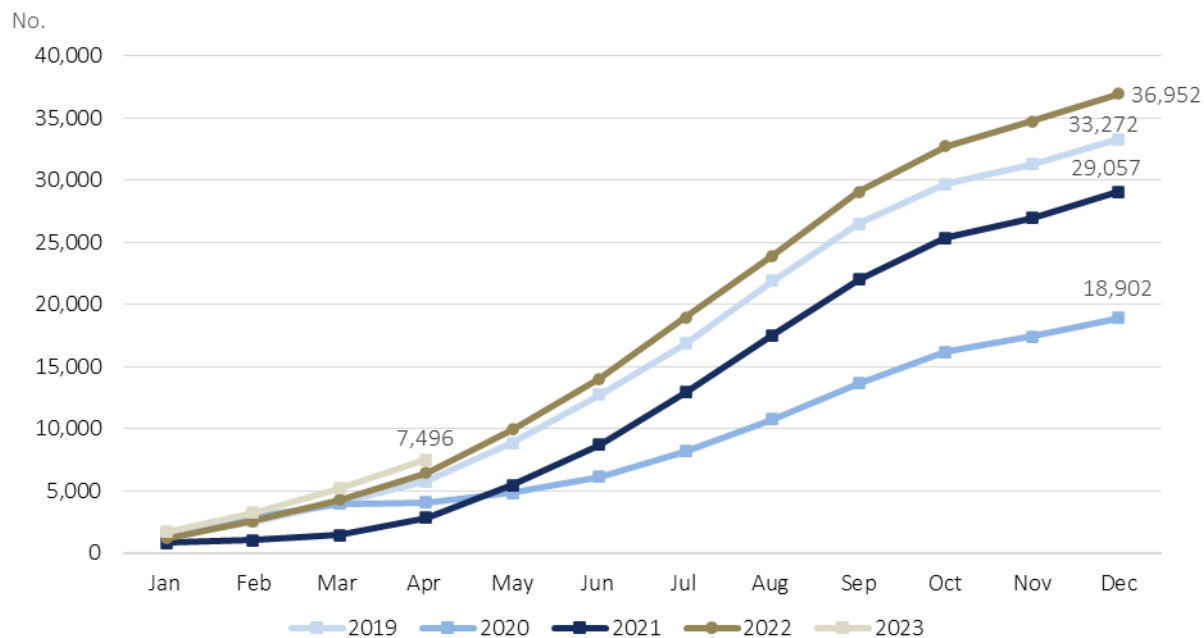


Figure 8. Marriages and year-on-year change, January 1919 to April 2023



Source: Statistics Portugal, Marriages.

Figure 9. Monthly marriages (cumulative values), 2019, 2020, 2021, 2022 and 2023



Source: Statistics Portugal, Marriages.



## TECHNICAL NOTE

Statistics Portugal releases the **preliminary** monthly **numbers** of deaths, live births, and marriages based on the information registered in the Civil Register Offices until June 9<sup>th</sup>, 2023. Indicators on the preliminary monthly number of live births, deaths, and marriages, from January to April 2023, with geographical breakdowns up to NUTS 3, as well as weekly number of deaths, until the 22<sup>nd</sup> week 2023, by NUTS 3 and daily number of deaths, until June 4<sup>th</sup>, 2023, by NUTS 2 are made available on the Statistics Portugal Website.

Data are obtained from statistical operations of direct and exhaustive collection on live births, deaths and marriages in Portuguese territory using facts that are subject to compulsory civil registration (birth and death) in the Sistema Integrado do Registo e Identificação Civil (SIRIC).

In addition to administrative information obtained from Civil Register Offices, Statistics Portugal collects an additional set of variables identified as statistically pertinent to the National Statistic System (NSS) and the European Statistical System (EES). Data is recorded and sent electronically, in compliance with the requirements set out by Statistics Portugal and laid down in liaison with the Instituto de Registos e Notariado (IRN) and the Instituto de Gestão Financeira e Equipamentos da Justiça (IGFEJ).

Data on the number of deaths due to COVID-19 are also used, whose source is the “Number of New Cases and Deaths Per Day” Report of the Directorate-General for Health.

## DEFINITIONS

**Marriage:** Contract signed by two persons that intend to start a family in full partnership and cohabitation according to legislation. Note: marriage can be held between persons from different or same sex.

**Live birth:** This is the complete expulsion or extraction from the mother's body, irrespective of the duration of the pregnancy, of a product of fertilization that, after separation, breathes or shows any other signs of life, such as a beating of the heart or umbilical cord or actual contraction of any muscle subject to voluntary movement, whether the umbilical cord has been severed and whether the placenta is retained.

**Death:** The permanent disappearance of vital functions.

**Natural balance:** The difference between the number of live births and the number of deaths during a given period.

**Year-on-year change:** The year-on-year change compares the level of a variable between the reference month and the same month of the previous year.

---

Detailed methodological information available at: [www.ine.pt](http://www.ine.pt), option Products, Metadata system.

Detailed statistical information available at: [www.ine.pt](http://www.ine.pt), option Products, Statistical data, database, theme Population, subtheme Births and natality rates and subtheme Mortality and life expectancy.

---

### Next Press Release

14<sup>th</sup> July 2023: “Vital Statistics - Monthly data – June 2023”.

---