



June 14, 2023  
TRANSPORT ACTIVITIES  
Air Transport Flash Statistics  
April 2023

## MOVEMENT OF PASSENGERS AT NATIONAL AIRPORTS CONTINUES TO REACH HISTORICAL HIGHS

In **April 2023**, 5.9 million passengers and 18.4 thousand tonnes of freight and mail were handled at national airports, corresponding to year-on-year variations of +18.7% and +0.6%, respectively, compared to April 2022. Vis-à-vis April 2019, there were increases of 11.0% and 7.7%, in the same order.

Since the beginning of 2023, monthly passenger values at national airports have always been higher than pre-pandemic levels. In April 2023, there was a daily average of nearly 99 thousand passengers disembarked at national airports, a value higher than the one registered in April 2022 (83.9 thousand; +18.4%) and 10.8% above the one recorded in April 2019 (89.6 thousand).

Between **January and April 2023**, the number of passengers increased by 41.1% compared with the same period of 2022, while the movement of freight and mail remained unchanged. Compared with the same period of 2019, there were increases of 13.7% and 10.7%, respectively.

France remained as the main country of origin and destination of international flights with passengers, followed by the United Kingdom and Spain. In the first four months of 2023, Spain and Italy recorded the highest increases compared to the same period of 2022: +65.7% and +67.8%, respectively, in passengers disembarked; +68.0% and +67.9%, in the same order, in passengers embarked.

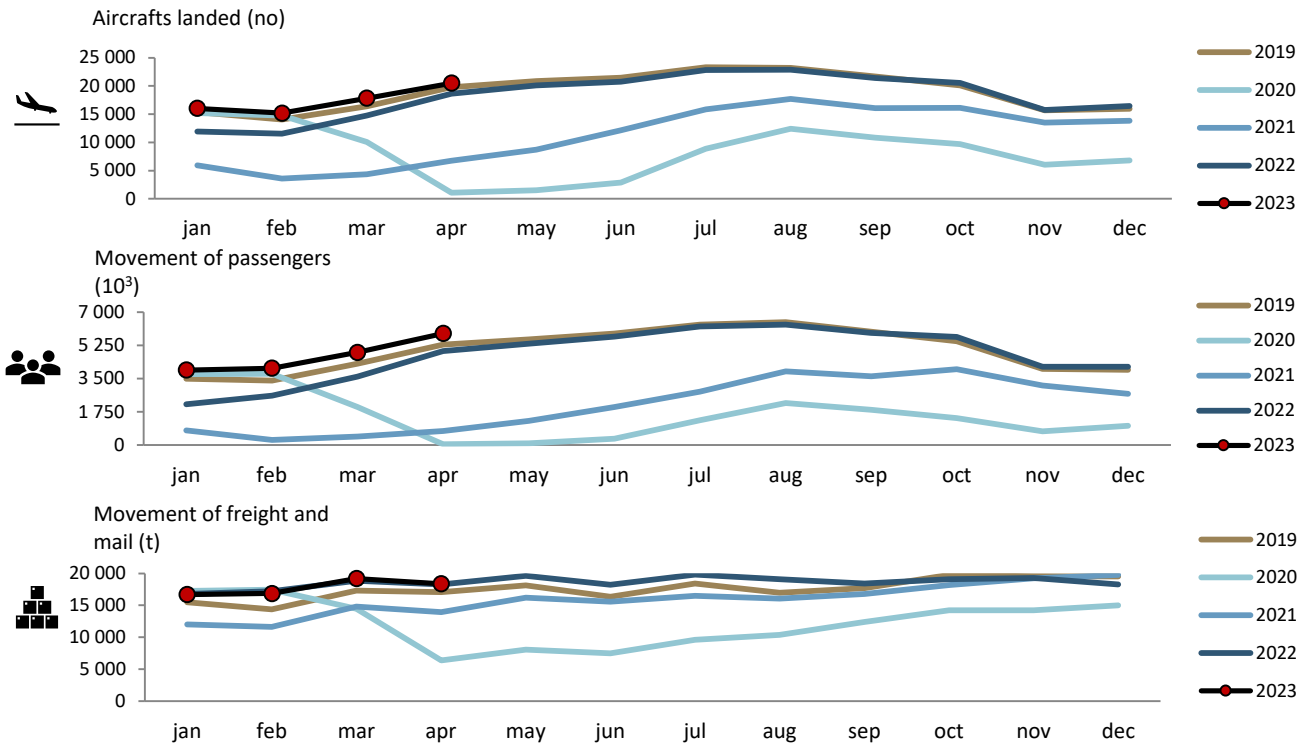
---

### Monthly traffic at national airports

In **April 2023**, 20.5 thousand commercial aircrafts landed at national airports, corresponding to 5.9 million passengers (embarked, disembarked and direct transits) and 18.4 thousand tonnes of freight and mail were handled (+10.1%, +18.7% and +0.6%, respectively, vis-à-vis April 2022). Compared to April 2019, there were increases of 3.7%, 11.0% and 7.7%, respectively.



Figure 1. Aircrafts landed, passengers and freight/mail movement at national airports



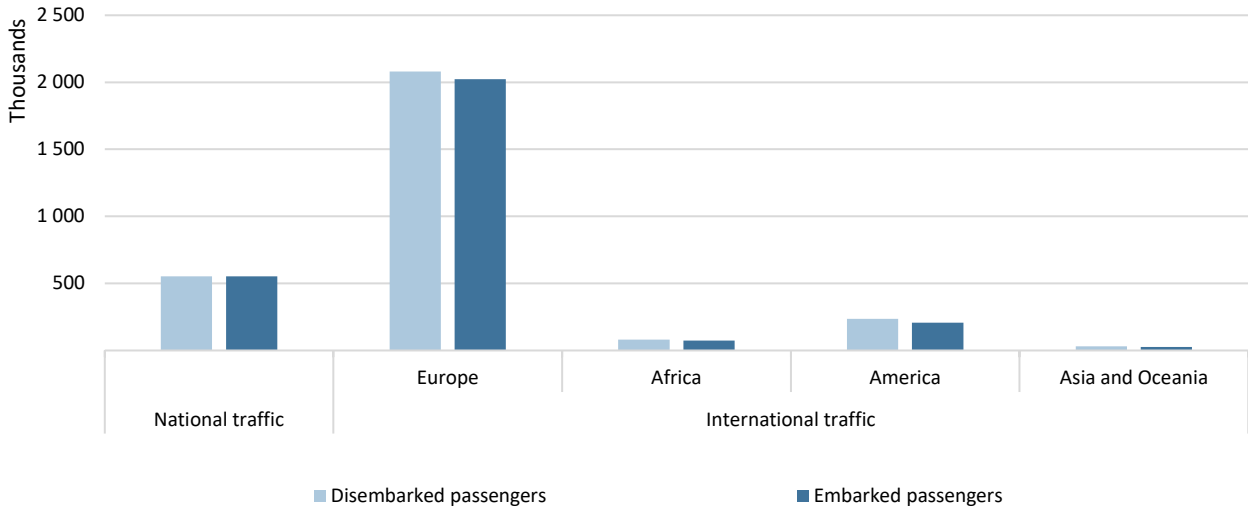
Source: Survey to airports and aerodromes (ANA/ANAC/Statistics Portugal)

In April 2023, 81.5% of passengers disembarked at national airports corresponded to international traffic, reaching 2.4 million passengers, mostly from the European continent (69.8% of the total), corresponding to an increase of 17.0% compared to April 2022. The American continent was the second main origin, concentrating 7.9% of the total passengers disembarked.

Regarding embarked passengers, 80.9% corresponded to international traffic, totalling 2.3 million passengers, having as main destination airports in the European continent (70.2% of the total), recording an increase of 18.5% compared to April 2022. Airports in the American continent were the second main destination of embarked passengers (7.2% of the total).



Figure 2. Passengers disembarked and embarked at national airports by nature of traffic and Continent of origin/destination – April 2023

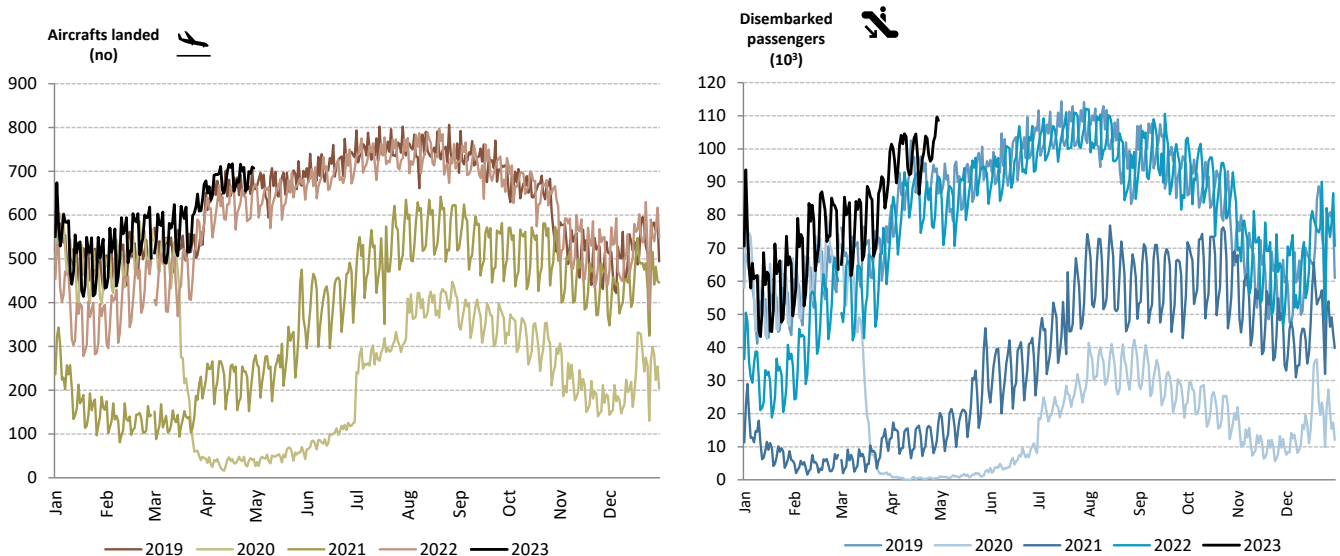


Source: Survey to airports and aerodromes (ANA/ANAC/Statistics Portugal)

The daily movement of aircrafts and passengers is typically influenced by seasonal and weekly cycle fluctuations and was significantly affected by the impact of the pandemic in 2020 and 2021, showing a recovery over 2022.

Since the beginning of 2023, monthly passenger values at national airports have always been higher than pre-pandemic levels. In April 2023, there was a daily average of nearly 99 thousand passengers disembarked at national airports, a value higher than the one registered in April 2022 (83.9 thousand; +18.4%) and 10.8% above the one recorded in April 2019 (89.6 thousand).

Figure 3. Aircrafts landed and disembarked passengers at national airports – daily



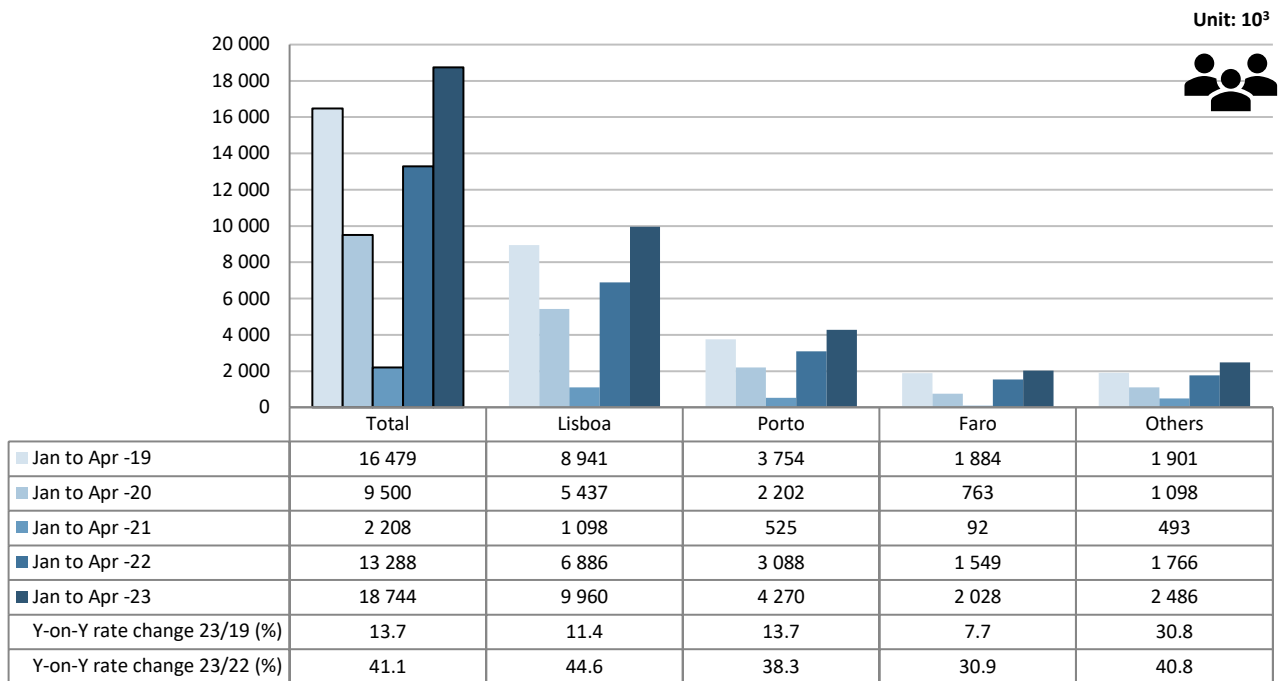
Source: Survey to airports and aerodromes (ANA/ANAC/Statistics Portugal)



## Accumulated traffic at national airports

Between January and April 2023, the movement of passengers at national airports increased by 41.1% compared to the same period of 2022 (+13.7% vis-à-vis 2019). The movement of passengers in Lisboa airport corresponded to 53.1% of total handled passengers (nearly 10 million), increasing by 44.6% vis-à-vis the same period of 2022 (+11.4% compared with 2019). Porto airport concentrated 22.8% of total passengers handled and increased by 38.3% (+13.7% vis-à-vis 2019). Faro airport increased by 30.9% (+7.7% compared to 2019).

Figure 4. Movement of passengers at national airports



Source: Survey to airports and aerodromes (ANA/ANAC/Statistics Portugal)

Considering the volume of passengers disembarked and embarked on international flights between January and April 2023, France remained as the main country of origin and destination of flights. The more significant growths compared to the same period of 2022 occurred with passengers from Spain (+65.7% and +68.0%, depending on the country of origin and destination, respectively) and from Italy (+67.8% and +67.9%, in the same order).



Table 1. Main countries of origin and destination of flights with passengers at national airports

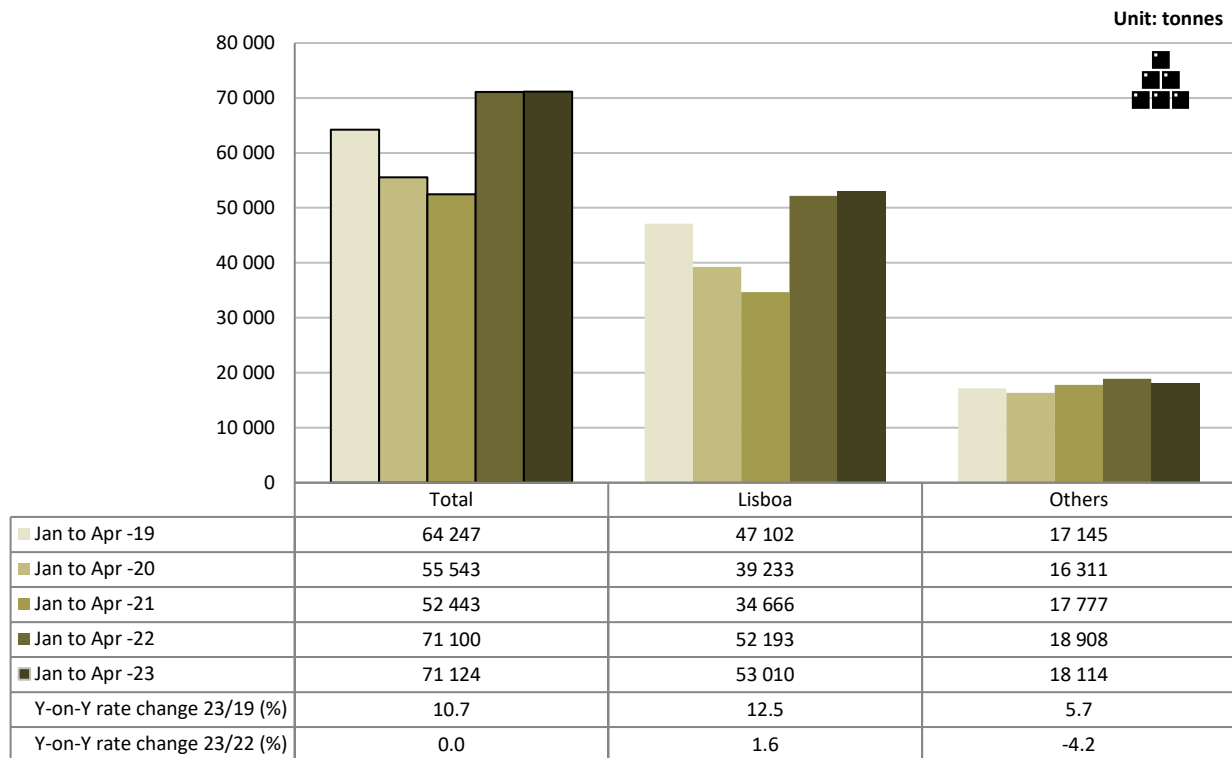
Ranking	Country of origin (of the flight)	Jan to Apr 2023		Ranking	Country of destination (of the flight)	Jan to Apr 2023	
		Passengers disembarked (10 <sup>3</sup> )	Y-on-Y growth rate (%)			Passengers embarked (10 <sup>3</sup> )	Y-on-Y growth rate (%)
1	France	1 279.6	28.6	1	France	1 266.6	29.9
2	United Kingdom	1 204.6	37.3	2	United Kingdom	1 199.8	39.6
3	Spain	1 024.2	65.7	3	Spain	1 012.1	68.0
4	Germany	644.4	18.7	4	Germany	644.8	18.4
5	Italy	470.5	67.8	5	Italy	470.5	67.9

Source: Survey to airports and aerodromes (ANA/ANAC/Statistics Portugal)

In the first four months of 2023, the freight and mail handled at national airports remained unchanged (nearly 71.1 thousand tonnes). The movement of freight and mail at Lisboa airport represented 74.5% of the total, corresponding to 53.0 thousand tonnes (+1.6%; +12.5% compared with the same period of 2019).

Considering the group of other airports, the movement of freight and mail decreased by 4.2% (+5.7% vis-à-vis 2019).

Figure 5. Freight and mail movement at national airports



Source: Survey to airports and aerodromes (ANA/ANAC/Statistics Portugal)



## METHODOLOGICAL NOTES

In this Press Release the following statistical data are used:

2023: preliminary results;

2022: provisional results;

2019, 2020 e 2021: definitive results.

**Main national airports** (considered in this Press Release as national airports): Lisboa, Porto, Faro, Ponta Delgada, Madeira, Porto Santo, Beja, Horta, Flores, Santa Maria, Terceira, Pico, Graciosa, São Jorge, Corvo, Portimão, Bragança, Cascais, Vila Real and Viseu.

**SOURCES:** Survey to airports and aerodromes (ANA/ANAC/Statistics Portugal)

## MAIN CONCEPTS:

**Commercial aviation** - Air transport flight performed for the public transport of passengers, freight or mail, for remuneration and for hire.

**Commercial air traffic** - Movement of aircrafts, passengers, freight and mail in commercial aviation.

## Monthly indicators at Statistics Portugal portal:

[Aircrafts landed \(No.\) in airports by Geographic localization, Type of traffic and Nature of traffic; Monthly](#)

[Aircrafts landed \(No.\) in airports by Continent of origin; Monthly](#)

[Aircrafts unglued \(No.\) in airports by Geographic localization, Type of traffic and Nature of traffic; Monthly](#)

[Disembarked passengers \(No.\) in airports by Geographic localization, Type of traffic and Nature of traffic; Monthly](#)

[Disembarked passengers \(No.\) in Airports by Continent of origin; Monthly](#)

[Embarked passengers \(No.\) in airports by Geographic localization, Type of traffic and Nature of traffic; Monthly](#)

[Embarked passengers \(No.\) in airports by Destination continent; Monthly](#)

[Passengers in direct transit \(No.\) in airports by Geographic localization, Type of traffic and Nature of traffic; Monthly](#)

[Disembarked load \(t\) in airports by Geographic localization, Type of traffic and Nature of traffic; Monthly](#)

[Embarked load \(t\) in airports by Geographic localization, Type of traffic and Nature of traffic; Monthly](#)

[Disembarked mail \(t\) in airports by Geographic localization, Type of traffic and Nature of traffic; Monthly](#)

[Embarked mail \(t\) in airports by Geographic localization, Type of traffic and Nature of traffic; Monthly](#)





INSTITUTO NACIONAL DE ESTATÍSTICA  
STATISTICS PORTUGAL

press release



#### ACRONYMS AND DESIGNATIONS

ANA	Portugal Airports, S.A.
ANAC	National Civil Aviation Authority
INE	Statistics Portugal

---

**Next Press Release (monthly)** - Air Transport Flash Statistics – July 13, 2023

**Next Press Release (quarterly)** - Transport activities (Q2 2023) – September 7, 2023

---