



12<sup>h</sup> May 2023

VITAL STATISTICS – Monthly data

April 2023

*Page 5, 1<sup>st</sup> paragraph, 1<sup>st</sup> line: where it was “... an increase of 4.2% (1,237 more) ...”, now it is “... an increase of 4.2% (279 more) ...”.*

## DEATHS, LIVE BIRTHS AND MARRIAGES

### IN APRIL 2023, MORTALITY DECREASED 12.1% COMPARED TO THE SAME MONTH OF 2022

In April 2023, the number of deaths was 8,949, lower than the number registered in March 2023 (1,604 less deaths; -15.2%) and in April 2022 (1,237 less deaths; -12.1%). In that month, the number of deaths due to COVID-19 decreased to 147 (49 less deaths than in March 2023), accounting for 1.6% of all deaths. Compared to April 2022, there was a decrease of 448 deaths due to COVID-19.

In March 2023, 6,994 children were born alive, corresponding to an increase of 4.2% compared to March 2022 (6,715). The total number of live births registered in the first three months of 2023 (20,385) was higher than the value observed in the same period of 2022 (19,342), representing a further 1,043 live births (+5.4%).

In March 2023, the natural balance was -3,535, improving in relation to the same month of 2022, when it reached -4,085. In the first three months of 2023, the cumulative value of the natural balance was -12,885, registering an improvement from the value registered in the same period of 2022 (-13,849).

In March 2023, 1,985 marriages were celebrated, corresponding to an increase of 17.5% compared to the number of marriages held in March 2022 (296 more marriages). In the first three months of 2023, 5,196 marriages were celebrated, 960 more (+22.7%) than in the same period of 2022.

---

In this press release, Statistics Portugal provides **preliminary data** on the number of deaths per month until April 2023<sup>1</sup>, and the number of live births and marriages per month until March 2023, that occurred in the national territory. The indicators published and analyzed in this Press Release are available on the Official Statistics Portal ([www.ine.pt](http://www.ine.pt)), with geographical breakdowns NUTS 2 and NUTS 3. The hyperlinks to these statistics can be found in the Excel file published together with this Press Release. The information is obtained from the Sistema Integrado do Registo e Identificação Civil (SIRIC) until May 4<sup>th</sup>, 2023. The data presented regarding the number of deaths due to COVID-19, whose source is the report “Number of New Cases and Deaths Per Day” of the Directorate-General for Health, were extracted on May 8<sup>th</sup>, 2023.

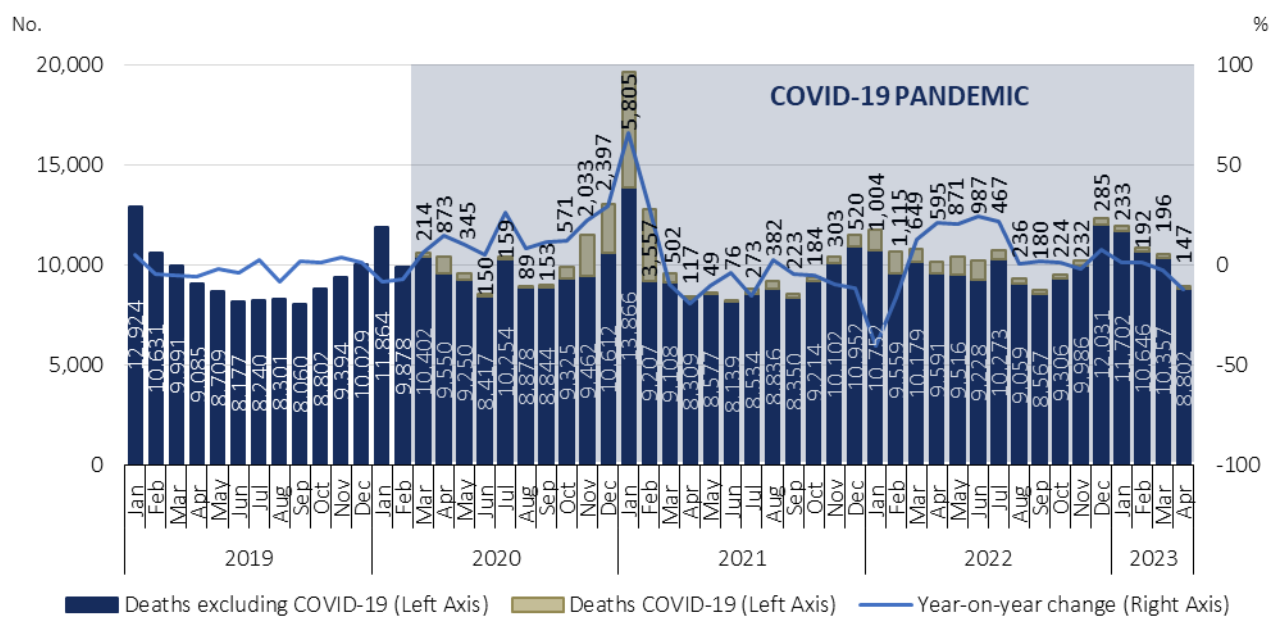
---

<sup>1</sup> After the release of mortality data for 2022 and considering the decrease of the impact of deaths due to COVID-19 on mortality, the analysis regarding the number of deaths per week was suspended. However, the release of indicators regarding the number of weekly deaths, by NUTS 3 breakdown, until the 17<sup>th</sup> week of 2023, and daily deaths, by NUTS 2 breakdown, until April 30<sup>th</sup>, 2023 is assured.

In April 2023, mortality decreased 12.1% when compared to the same month of 2022

In April 2023, there were 8,949 deaths, 1,604 less than in the previous month. Compared to the same month of 2022, the number of deaths decreased (1,237 less deaths; -12.1%). The number of deaths due to COVID-19 decreased to 147 (49 less than in March 2023), accounting for 1.6% of all deaths. Compared to April 2022, there was a decrease of 448 deaths (-75.3%) due to COVID-19.

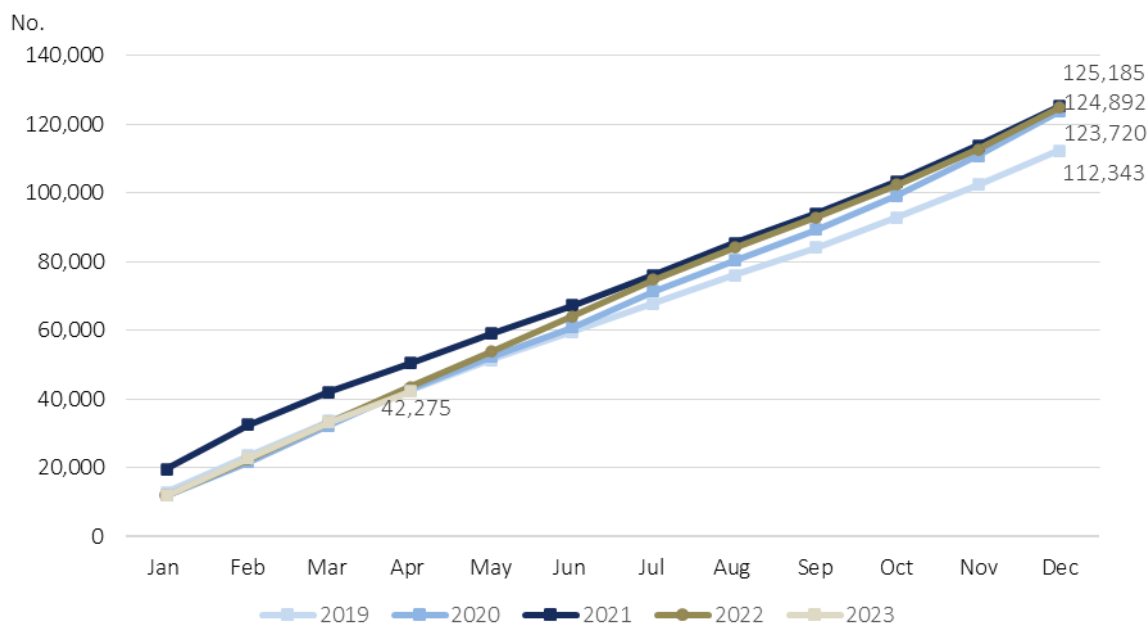
Figure 1. Deaths and year-on-year change, January 2019 to April 2023



Source: Statistics Portugal, Deaths. Directorate-General of Health, [Number of New Cases and Deaths Per Day](#) (extracted on 08/05/2023).

The number of deaths registered in the first four months of 2023 (42,275) was lower than the value registered in same period of 2022 (1,169 less deaths; -2.7%).

Figure 2. Monthly deaths (cumulative values), 2019, 2020, 2021, 2022 and 2023



Source: Statistics Portugal, Deaths.

The “excess mortality” indicator calculated by Eurostat, compares the number of deaths recorded each month, in the European Union (EU-27) and EFTA countries, with the average number of monthly deaths in the period 2016-2019. In February 2023, and for the first time since the COVID-19 pandemic began, there was no excess mortality in the EU-27. Of the 27 member states, only nine countries registered excess mortality, namely: Austria, Cyprus, Greece, Ireland, Italy, Malta, Spain, the Netherlands and Portugal.



Figure 3. Monthly excess mortality in EU-27 and EFTA countries, November 2022 to February 2023  
(2016-2019 average = 100)

Countries	2022		2023	
	November	December	January	February
<b>EU 27</b>	<b>108.6</b>	<b>119.7</b>	<b>102.9</b>	<b>97.7<sup>(1)</sup></b>
Austria	116.1	130.1	114.0	100.6
Belgium	102.0	119.7	105.3	94.9
Bulgaria	99.4	95.7	86.3	89.2
Croatia	103.4	109.5	94.2	98.0
Cyprus	128.9	121.0	103.6	112.5
Czechia	106.4	124.3	107.1	91.8
Denmark	107.1	123.1	111.7	98.0
Estonia	114.0	124.0	109.8	92.0
Finland	122.7	121.2	108.5	100.0
France	109.0	126.4	105.2	98.4
Germany	116.4	138.2	113.6	98.8
Greece	109.6	111.1	109.0	112.3
Hungary	106.2	108.0	89.9	91.6
Ireland	115.5	125.7	115.4	100.7
Italy	109.4	113.7	95.3	100.8
Latvia	104.1	117.8	107.7	96.3
Lithuania	101.3	120.6	98.5	77.2
Luxembourg	104.3	110.6	115.9	90.6
Malta	117.2	111.2	103.8	101.7
Netherlands	113.1	123.4	113.3	104.0
Poland	102.9	117.8	105.0	91.5
<b>Portugal</b>	<b>113.0</b>	<b>114.7</b>	<b>96.8</b>	<b>105.8</b>
Romania	94.7	88.8	84.3	87.4
Slovakia	107.9	118.0	101.0	85.1
Slovenia	113.5	124.7	106.2	95.6
Spain	104.9	109.9	98.3	103.9
Sweden	102.6	119.7	108.3	91.3
Iceland	112.7	129.8	129.0	110.7
Liechtenstein	108.1	84.0	107.0	105.9
Norway	113.9	121.2	108.3	94.4
Switzerland	113.8	124.5	106.4	94.5

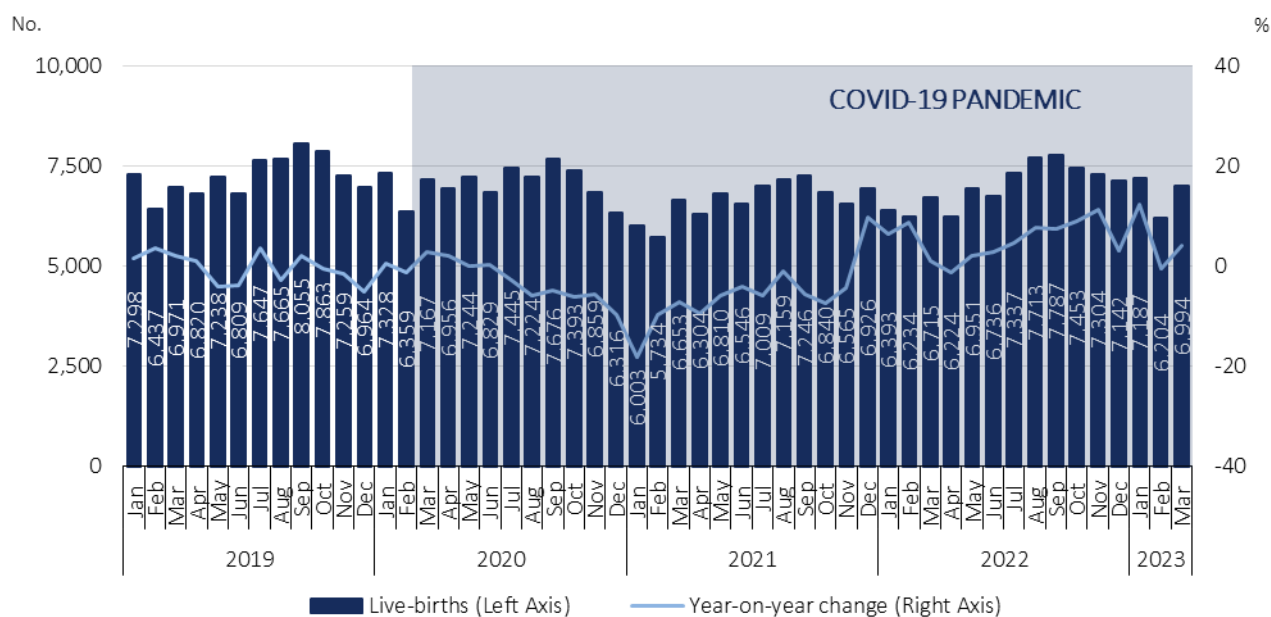
<sup>(1)</sup> Estimated value.

Source: Eurostat, [Excess mortality – monthly data](#) (extracted on 08/05/2023).

In March 2023, the number of live births increased 4.2% compared to March 2022

In March 2023, 6,994 children were born alive, corresponding to an increase of 4.2% (279 more) when compared to the same month of 2022.

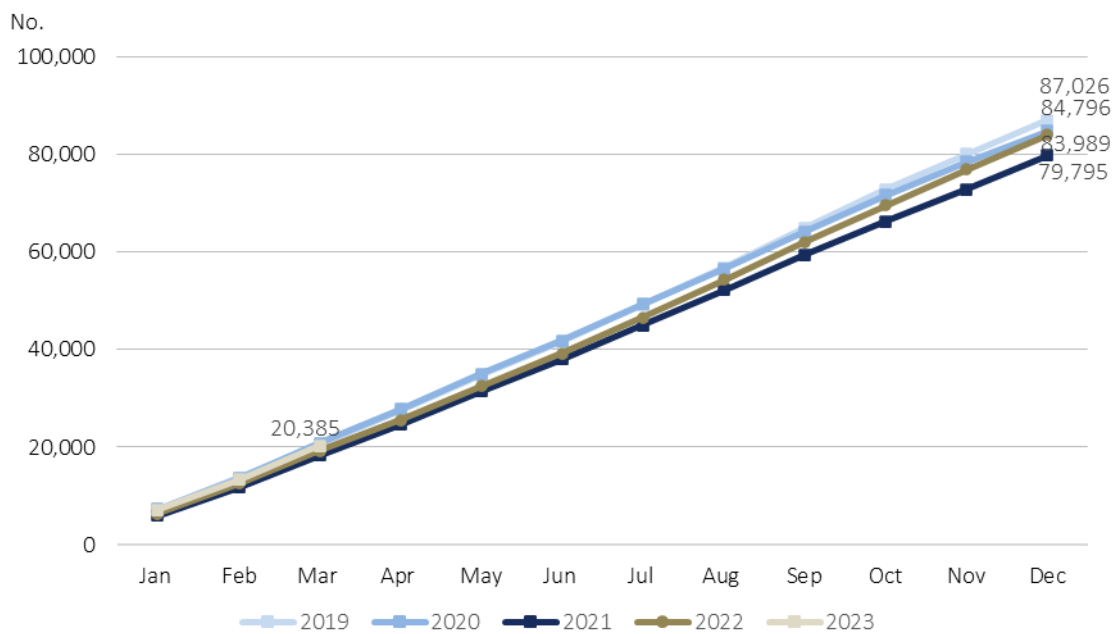
Figure 4. Live births and year-on-year change, January 2019 to March 2023



Source: Statistics Portugal, Live births.

The total number of live births registered in the first three months of 2023 (20,385) was higher than that observed in 2022 (19,342), representing a further 1,043 live births (+5.4%).

Figure 5. Monthly live births (cumulative values), 2019, 2020, 2021, 2022 and 2023



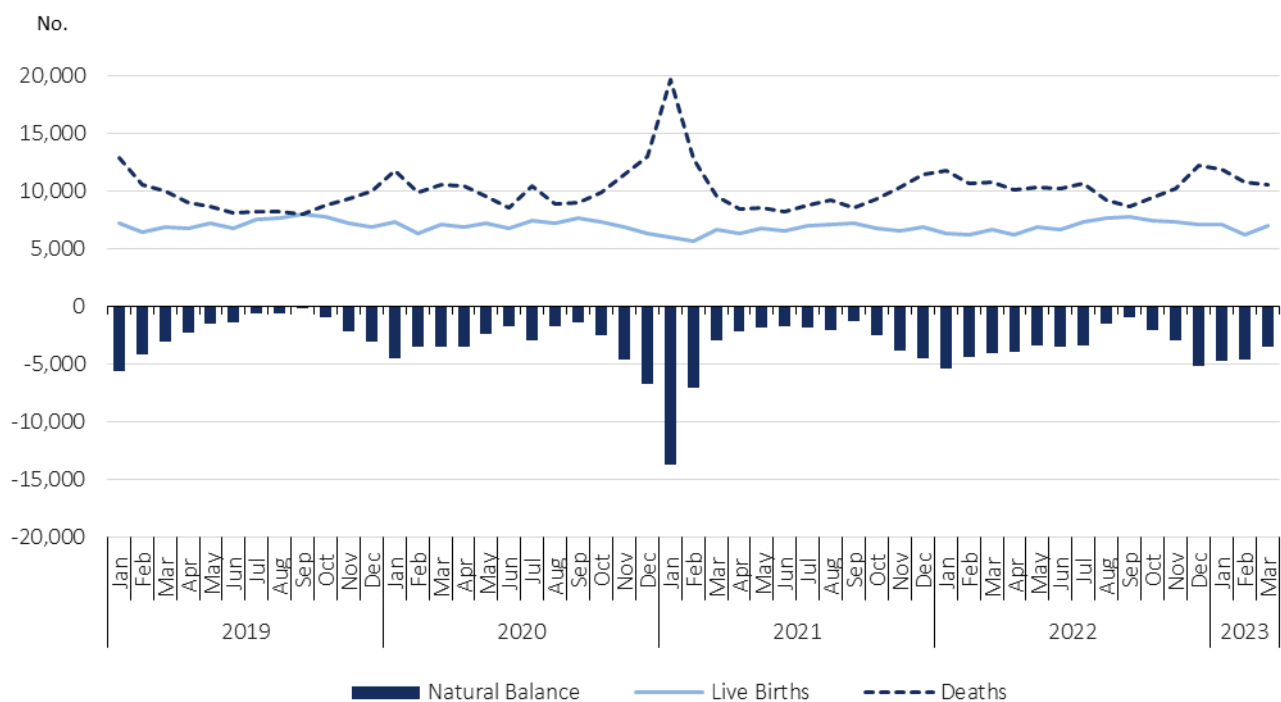
Source: Statistics Portugal, Live births.



In March 2023, the natural balance was -3,535

In March 2023, the natural balance registered the value of -3,535, improving when compared to the value registered in same month of 2022 (-4,085).

Figure 6. Live births, deaths, and natural balance<sup>2</sup>, Portugal, January 2019 to March 2023

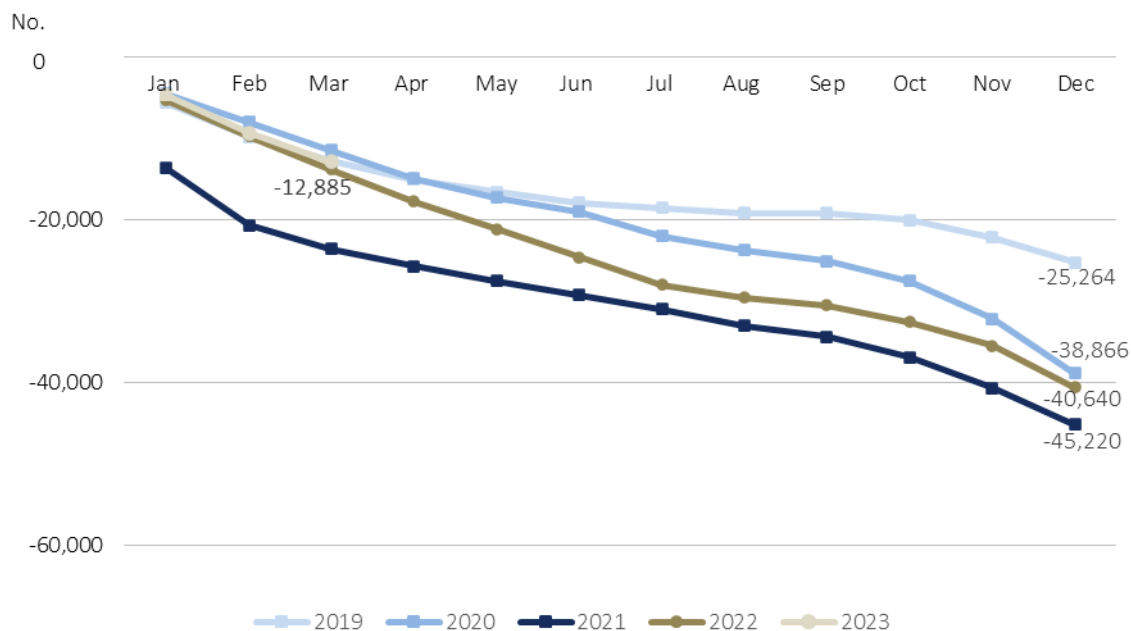


Source: Statistics Portugal, Live births, Deaths, and Demographic indicators.

In the first three months of 2023, the cumulative value of the natural balance was -12,885, improving the figure registered in same period of 2022 (-13,849).

<sup>2</sup> The natural balance is calculated based on the number of live births of mothers residing in Portugal and the number of deaths of residents in Portugal.

Figure 7. Monthly natural balance (cumulative values), 2019, 2020, 2021, 2022 and 2023



Source: Statistics Portugal, Live births, Deaths, and Demographic indicators.

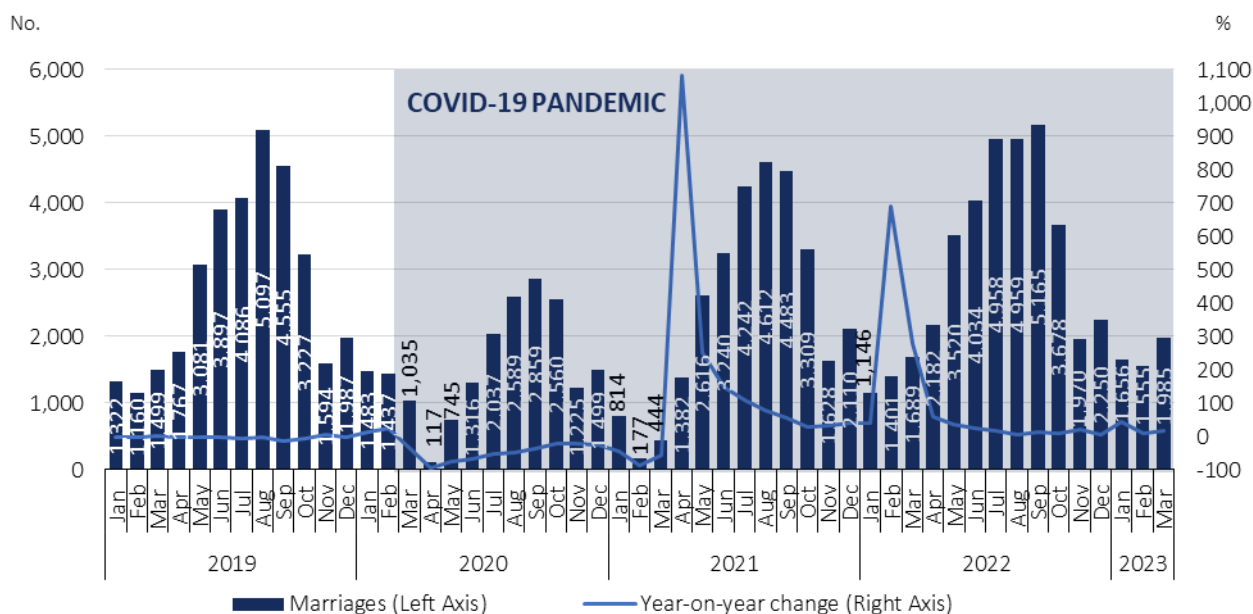
In March 2023, the number of celebrated marriages increased 17.5% compared to March 2022

In March 2023, 1,985 marriages were celebrated, corresponding to an increase of 17.5% compared to the number of marriages celebrated in March 2022 (296 more marriages).

In the first three months of 2023, 5,196 marriages were celebrated, 960 more (+22.7%) than in the same period of 2022.

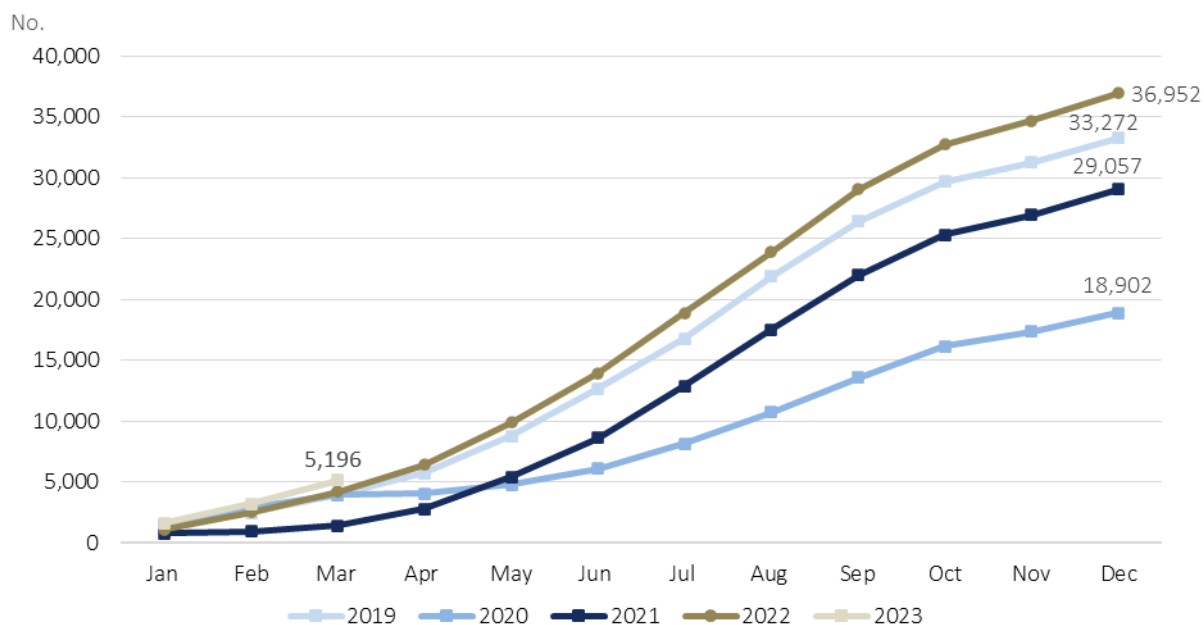


Figure 8. Marriages and year-on-year change, January 2019 to March 2023



Source: Statistics Portugal, Marriages.

Figure 9. Monthly marriages (cumulative values), 2019, 2020, 2021, 2022 and 2023



Source: Statistics Portugal, Marriages.



---

## TECHNICAL NOTE

Statistics Portugal releases the **preliminary** monthly **numbers** of deaths, live births, and marriages based on the information registered in the Civil Register Offices until May 4<sup>th</sup>, 2023. Indicators on the preliminary monthly number of live births, deaths, and marriages, from January to March 2023, with geographical breakdowns up to NUTS 3, as well as weekly number of deaths, until the 17<sup>th</sup> week 2023, by NUTS 3 and daily number of deaths, until April 30<sup>th</sup>, 2023, by NUTS 2 are made available on the Statistics Portugal Website.

Data are obtained from statistical operations of direct and exhaustive collection on live births, deaths and marriages in Portuguese territory using facts that are subject to compulsory civil registration (birth and death) in the Sistema Integrado do Registo e Identificação Civil (SIRIC).

In addition to administrative information obtained from Civil Register Offices, Statistics Portugal collects an additional set of variables identified as statistically pertinent to the National Statistic System (NSS) and the European Statistical System (EES). Data is recorded and sent electronically, in compliance with the requirements set out by Statistics Portugal and laid down in liaison with the Instituto de Registos e Notariado (IRN) and the Instituto de Gestão Financeira e Equipamentos da Justiça (IGFEJ).

Data on the number of deaths due to COVID-19 are also used, whose source is the “Number of New Cases and Deaths Per Day” Report of the Directorate-General for Health.

## DEFINITIONS

**Marriage:** Contract signed by two persons that intend to start a family in full partnership and cohabitation according to legislation. Note: marriage can be held between persons from different or same sex.

**Live birth:** This is the complete expulsion or extraction from the mother's body, irrespective of the duration of the pregnancy, of a product of fertilization that, after separation, breathes or shows any other signs of life, such as a beating of the heart or umbilical cord or actual contraction of any muscle subject to voluntary movement, whether the umbilical cord has been severed and whether the placenta is retained.

**Death:** The permanent disappearance of vital functions.

**Natural balance:** The difference between the number of live births and the number of deaths during a given period.

**Year-on-year change:** The year-on-year change compares the level of a variable between the reference month and the same month of the previous year.

---

Detailed methodological information available at: [www.ine.pt](http://www.ine.pt), option Products, Metadata system.

Detailed statistical information available at: [www.ine.pt](http://www.ine.pt), option Products, Statistical data, database, theme Population, subtheme Births and natality rates and subtheme Mortality and life expectancy.

---

### Next Press Release

16<sup>th</sup> June 2023: “Vital Statistics - Monthly data – May 2023”.

---