



17th March 2023

VITAL STATISTICS – Monthly data

February 2023

DEATHS, LIVE BIRTHS AND MARRIAGES

IN JANUARY 2023, THE NUMBER OF CELEBRATED MARRIAGES INCREASED BY 44.5% COMPARED TO JANUARY 2022

In February 2023, the number of deaths was 10,803, lower than the number registered in January 2023 (1,123 less deaths; -9.4%), but higher than that recorded in February 2022 (129 more deaths; +1.2%). In this month, the number of deaths due to COVID-19 decreased to 191 (41 less deaths than in January 2023), accounting for 1.8% of all deaths. Compared with February 2022, there was a decrease of 924 deaths due to COVID-19.

In January 2023, 7,146 children were born alive, corresponding to an increase of 11.8% compared to January 2022 (6,393).

In January 2023, the natural balance was -4,756, improving in relation to the same month of 2022, when it reached the value of -5,344.

In January 2023, 1,656 marriages were celebrated, corresponding to an increase of 44.5% compared to the number of marriages held in January 2022 (510 more marriages).

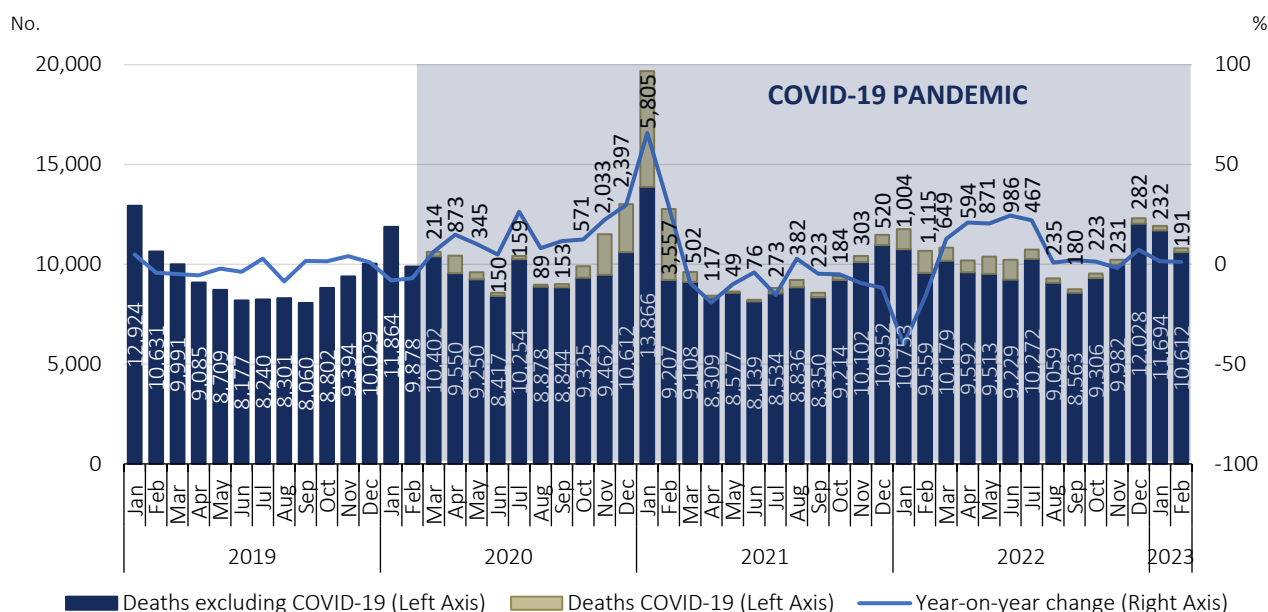
In this press release, Statistics Portugal provides **preliminary data** on the number of deaths per month until February 2023¹, and the number of live births and marriages per month until January 2023, that occurred in the national territory. The indicators published and analyzed in this Press Release are available on the Official Statistics Portal (www.ine.pt), with geographical breakdowns NUTS 2 and NUTS 3. The hyperlinks to these statistics can be found in the Excel file published together with this Press Release. The information is obtained from the Sistema Integrado do Registo e Identificação Civil (SIRIC) until March 14th, 2023. The data presented regarding the number of deaths due to COVID-19, whose source is the report “Number of New Cases and Deaths Per Day” of the Directorate-General for Health, were extracted on March 10th, 2023.

¹ After the release of mortality data for 2022 and considering the decrease of the impact of deaths due to COVID-19 on mortality, the analysis regarding the number of deaths per week was suspended, however, the release of indicators regarding the number of weekly deaths, by NUTS 3 breakdown, until the 9th week of 2023, and daily deaths, by NUTS 2 breakdown, until March 5th, 2023 is assured.

In February 2023, mortality increased by 1.2% when compared to the same month of 2022

In February 2023, there were 10,803 deaths, 1,123 less than in the previous month. Compared to the same month of 2022, the number of deaths increased (129 more deaths; +1.2%). However, the number of deaths due to COVID-19 decreased to 191 (41 less than in January 2023), accounting for 1.8% of all deaths. Compared to February 2022, there was a decrease of 924 deaths (-82.9%) due to COVID-19.

Figure 1. Deaths and year-on-year change, January 2019 to February 2023

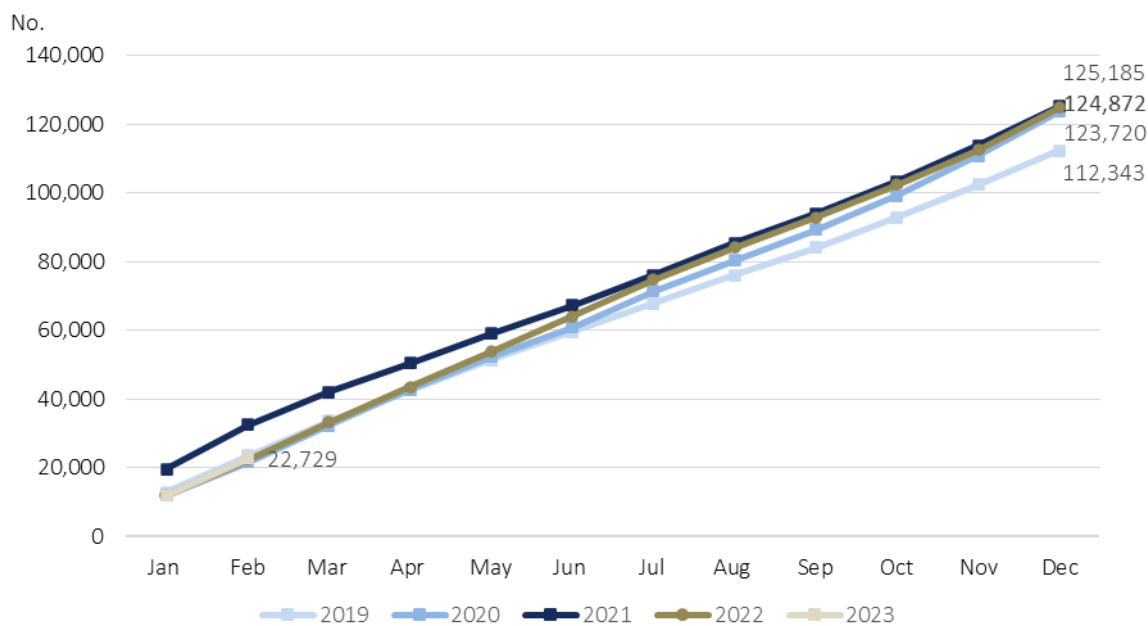


Source: Statistics Portugal, Deaths. Directorate-General of Health, [Number of New Cases and Deaths Per Day](#) (extracted on 10/03/2023).



The number of deaths registered in the first two months of 2023 (22,729) was slightly higher than the value registered in same period of 2022 (298 more deaths; +1.3%).

Figure 2. Monthly deaths (cumulative values), 2019, 2020, 2021, 2022 and 2023

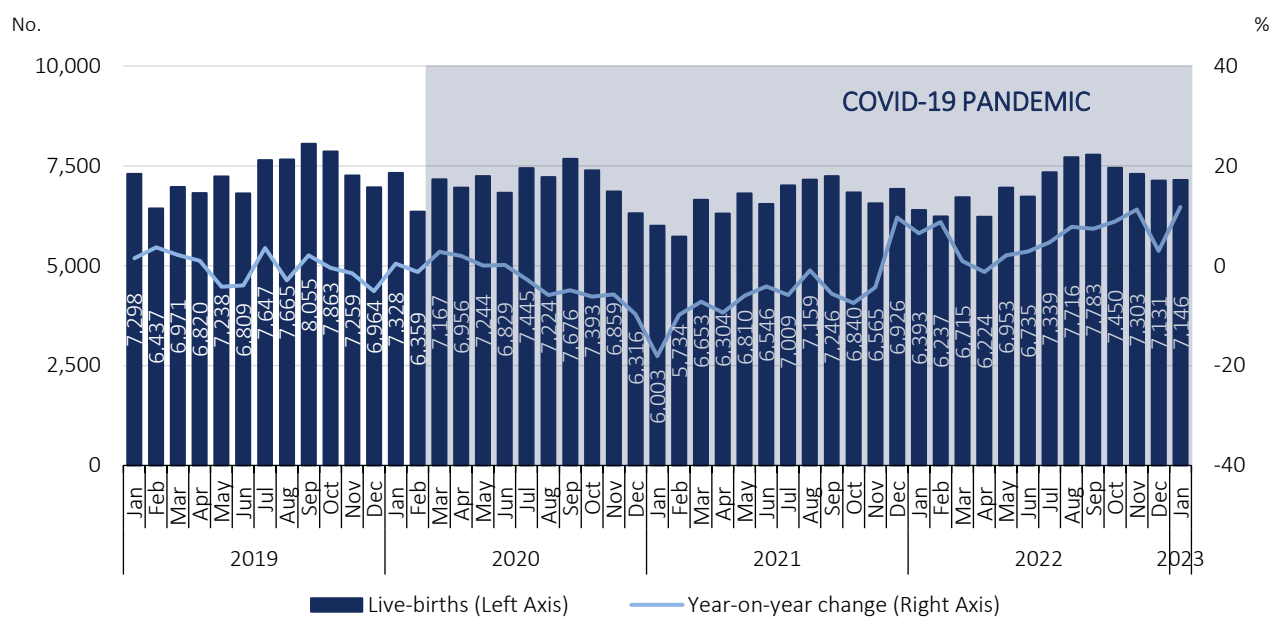


Source: Statistics Portugal, Deaths.

In January 2023, the number of live births increased by 11.8% compared to January 2022

In January 2023, 7,146 children were born alive, corresponding to an increase of 11.8% (753 more) when compared to the same month of 2022.

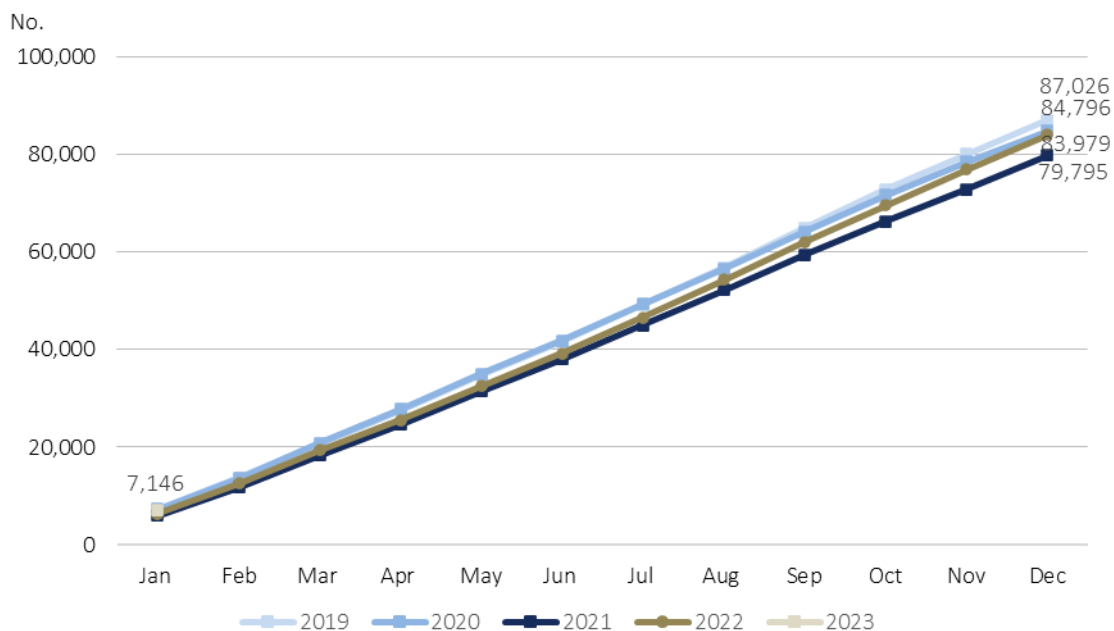
Figure 3. Live births and year-on-year change, January 2019 to January 2023



Source: Statistics Portugal, Live births.

The total number of live births registered in 2022 (83,979) was higher than that observed in 2021 (79,795), representing a further 4,184 live births (+5.2 %), although lower than the number of live births registered in 2019 (87,026) and 2020 (84,796).

Figure 4. Monthly live births (cumulative values), 2019, 2020, 2021, 2022 and 2023

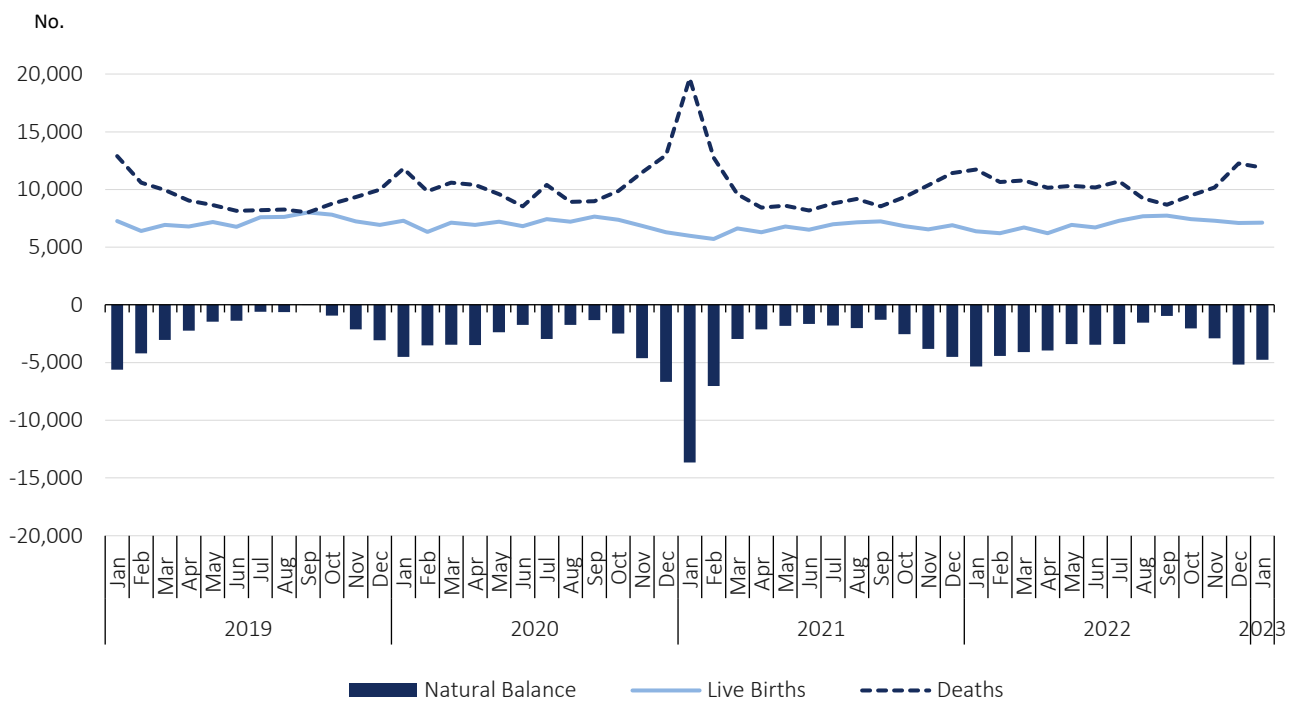


Source: Statistics Portugal, Live births.

In January 2023, the natural balance was -4,756

In January 2023, the natural balance registered the value of -4,756, improving when compared to the value registered in same month of 2022 (-5,344).

Figure 5. Live births, deaths, and natural balance², January 2019 to January 2023

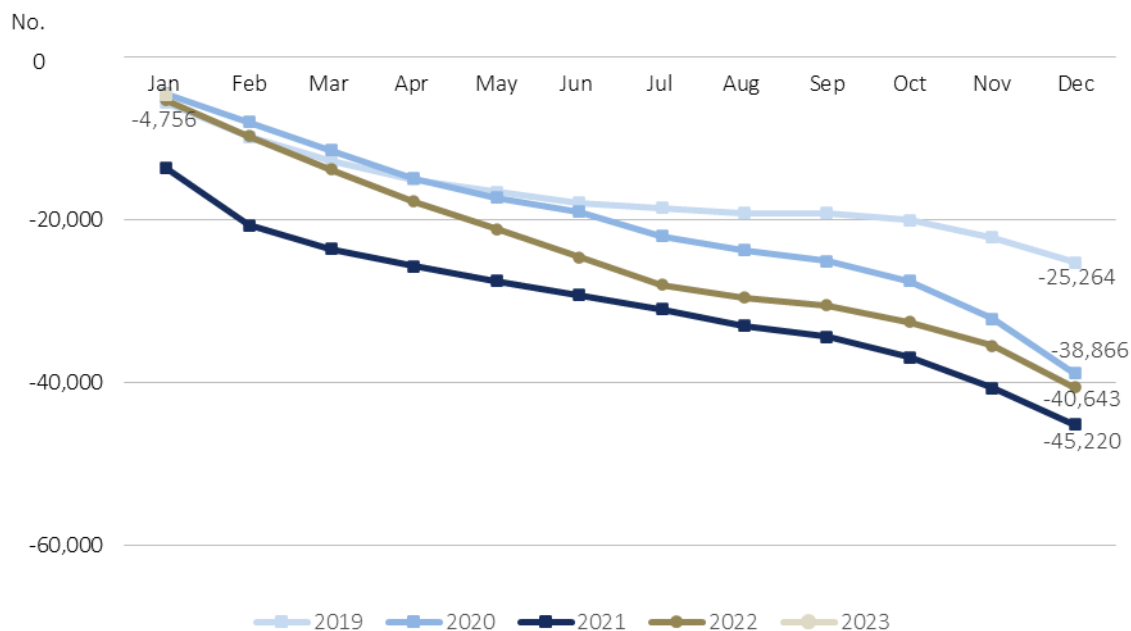


Source: Statistics Portugal, Live births, Deaths, and Demographic indicators.

In 2022, the cumulative value of the natural balance was -40,643, improving the figure registered in 2021 (-45,220), though worsening when compared to the same period of 2019 (-25,264) and of 2020 (-38,866).

² The natural balance is calculated based on the number of live births of mothers residing in Portugal and the number of deaths of residents in Portugal.

Figure 6. Monthly natural balance (cumulative values), 2019, 2020, 2021, 2022 and 2023



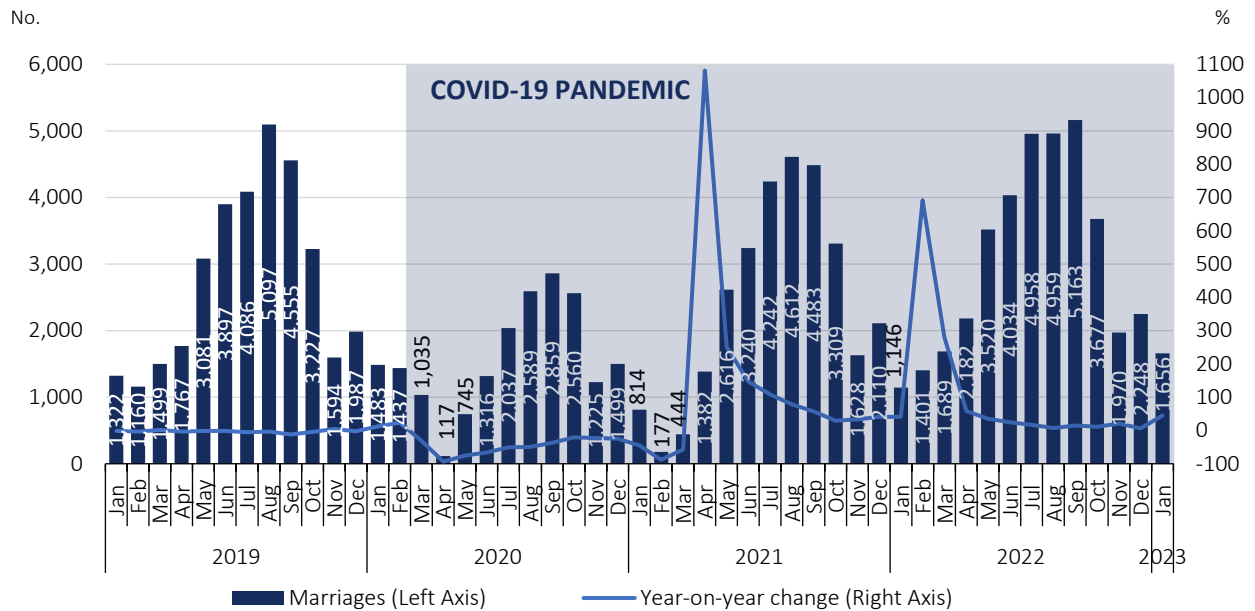
Source: Statistics Portugal, Live births, Deaths, and Demographic indicators.

In January 2023, the number of celebrated marriages increased by 44.5% compared to January 2022

In January 2023, 1,656 marriages were celebrated, corresponding to an increase of 44.5% regarding the number of marriages celebrated in January 2022 (510 more marriages).

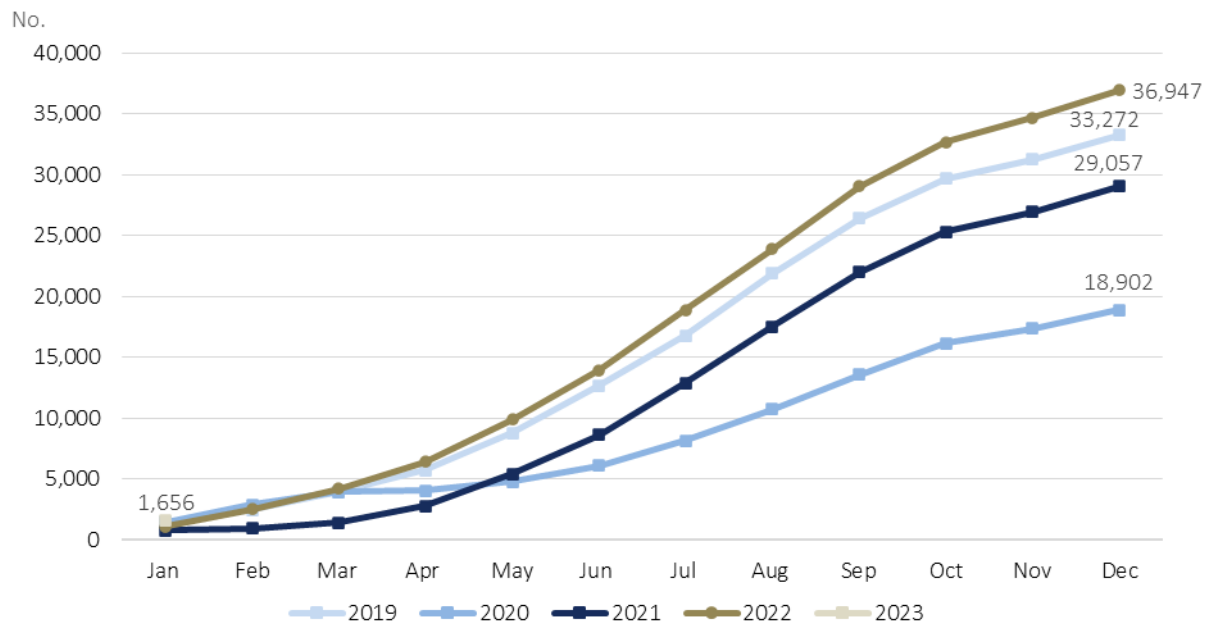
Throughout 2022, 36,947 marriages were celebrated, 7,890 more (+27.2%) than in the same period of 2021 and, respectively, 3,674 more (+11.0%) and 18,044 more (+95.5%) than in the same months of 2019 and 2020.

Figure 7. Marriages and year-on-year change, January 2019 to January 2023



Source: Statistics Portugal, Marriages.

Figure 8. Monthly marriages (cumulative values), 2019, 2020, 2021, 2022 and 2023



Source: Statistics Portugal, Marriages.



TECHNICAL NOTE

Statistics Portugal releases the **preliminary** monthly **numbers** of deaths, live births, and marriages based on the information registered in the Civil Register Offices until March 14th, 2023. Data for 2022 were revised, with information updated to this date. Indicators on the preliminary monthly number of live births, deaths, and marriages, from January 2022 to January 2023, with geographical breakdowns up to NUTS 3, as well as weekly number of deaths, until the 9th week 2023, by NUTS 3 and daily number of deaths, until March 5th, 2023, by NUTS 2 are made available on the Statistics Portugal Website.

Data are obtained from statistical operations of direct and exhaustive collection on live births, deaths and marriages in Portuguese territory using facts that are subject to compulsory civil registration (birth and death) in the Sistema Integrado do Registo e Identificação Civil (SIRIC).

In addition to administrative information obtained from Civil Register Offices, Statistics Portugal collects an additional set of variables identified as statistically pertinent to the National Statistic System (NSS) and the European Statistical System (EES). Data is recorded and sent electronically, in compliance with the requirements set out by Statistics Portugal and laid down in liaison with the Instituto de Registos e Notariado (IRN) and the Instituto de Gestão Financeira e Equipamentos da Justiça (IGFEJ).

Data on the number of deaths due to COVID-19 are also used, whose source is the “Number of New Cases and Deaths Per Day” Report of the Directorate-General for Health.

DEFINITIONS

Marriage: Contract signed by two persons that intend to start a family in full partnership and cohabitation according to legislation. Note: marriage can be held between persons from different or same sex.

Live birth: This is the complete expulsion or extraction from the mother's body, irrespective of the duration of the pregnancy, of a product of fertilization that, after separation, breathes or shows any other signs of life, such as a beating of the heart or umbilical cord or actual contraction of any muscle subject to voluntary movement, whether the umbilical cord has been severed and whether the placenta is retained.

Death: The permanent disappearance of vital functions.

Natural balance: The difference between the number of live births and the number of deaths during a given period.

Year-on-year change: The year-on-year change compares the level of a variable between the reference month and the same month of the previous year.

Detailed methodological information available at: www.ine.pt, option Products, Metadata system.

Detailed statistical information available at: www.ine.pt, option Products, Statistical data, database, theme Population, subtheme Births and natality rates and subtheme Mortality and life expectancy.

Next Press Release

14th April 2023: “Vital Statistics - Monthly data – March 2023”.
