



March 13, 2023
TRANSPORT ACTIVITIES
Air Transport Flash Statistics
January 2023

AIR PASSENGER TRANSPORT KEEP GROWTH TREND

In **January 2023**, 3.9 million passengers and 16.7 thousand tonnes of freight and mail were handled at national airports, corresponding to year-on-year variations of +84.0% and -0.4%, respectively, compared to January 2022.

Compared to January 2020 (before the start of the pandemic), the movement of passengers increased by 5.7% and the movement of freight and mail decreased by 3.2%.

In January 2023, there was a daily average of 60.7 thousand passengers disembarked at national airports, a value significantly higher than the one registered in January 2022 (31.9 thousand; +89.9%) and 5.4% above the one recorded in January 2020 (57.6 thousand).

France was the main country of origin and destination of flights, but it was Spain and the United Kingdom that registered the highest growths compared to January 2022, occupying second and third position, respectively.

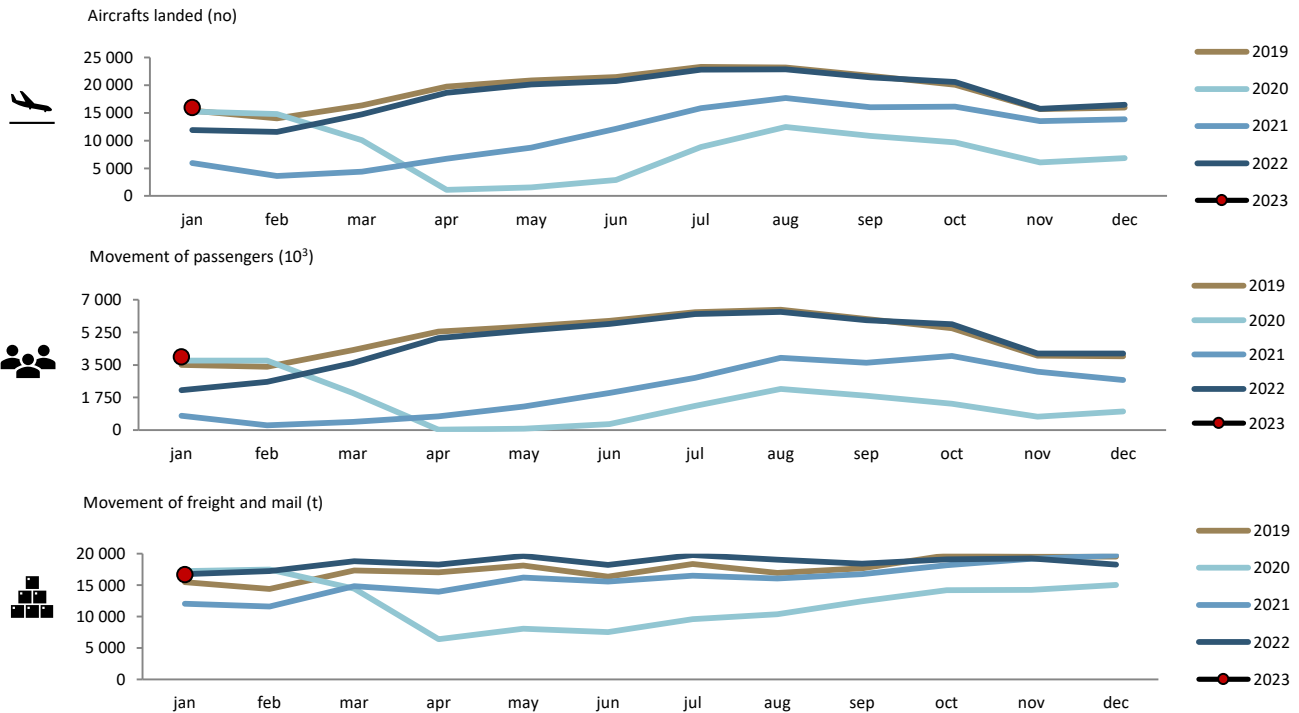
3.9 million passengers handled at national airports

In **January 2023**, 16.0 thousand commercial aircrafts landed at national airports, corresponding to 3.9 million passengers (embarked, disembarked and direct transits) and 16.7 thousand tonnes of freight and mail were handled (+34.4%, +84.0% and -0.4%, respectively, compared to January 2022).

Compared to January 2020, there were increases of 5.2% in the number of aircrafts landed and 5.7% in the movement of passengers, with the movement of freight and mail decreasing by 3.2% (+3.0%, +4.0% and -6.4% in the previous month, respectively).



Figure 1. Aircrafts landed, passengers and freight/mail movement at national airports



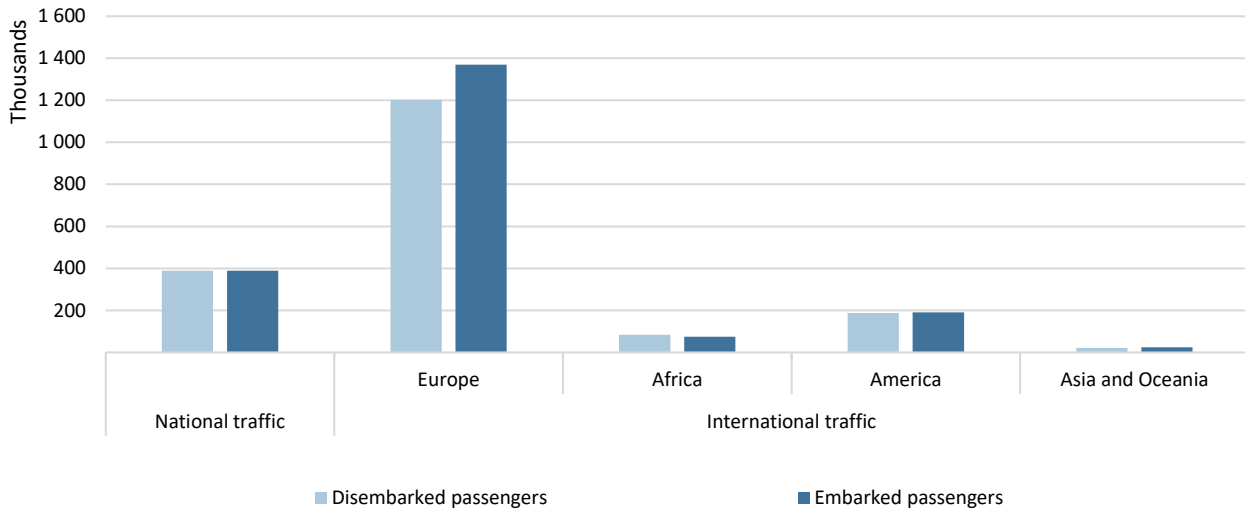
Source: Survey to airports and aerodromes (ANA/ANAC/Statistics Portugal)

Considering the total number of passengers disembarked at national airports in January 2023, 79.4% corresponded to international traffic, reaching 1.5 million passengers, mostly from the European continent (63.8% of the total), corresponding to an increase of 94.4% compared to January 2022. The American continent was the second main origin, concentrating 10.0% of the total passengers disembarked.

Regarding embarked passengers, 81.0% corresponded to international traffic, totalling 1.7 million passengers, having as main destination airports in the European continent (66.9% of the total), registering an 80.9% growth compared to January 2022. Airports in the American continent were the second main destination of embarked passengers (9.3% of the total).



Figure 2. Passengers disembarked and embarked at national airports by nature of traffic and Continent of origin/destination – January 2023



Source: Survey to airports and aerodromes (ANA/ANAC/Statistics Portugal)

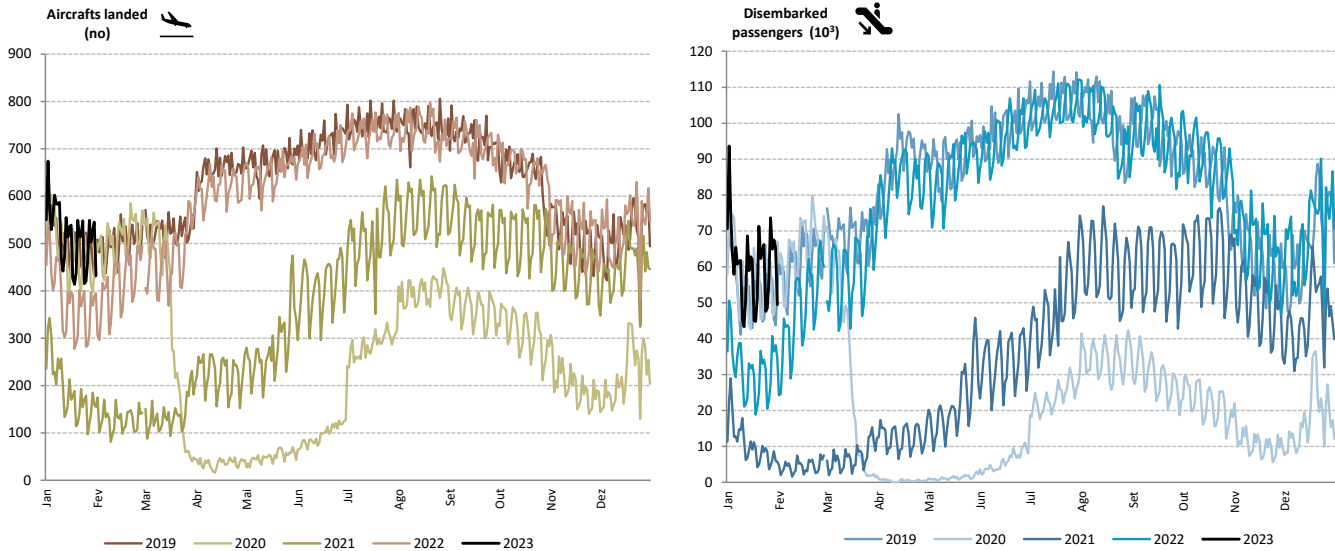
Daily average of 60.7 thousand passengers disembarked

The daily movement of aircrafts and passengers is typically influenced by seasonal and weekly cycle fluctuations and was significantly affected by the impact of the pandemic in 2020 and 2021, showing a recovery over 2022.

In January 2023, there was a daily average of 60.7 thousand passengers disembarked at national airports, a value significantly higher than the one registered in January 2022 (31.9 thousand; +89.9%) and 5.4% above the one recorded in January 2020 (57.6 thousand).



Figure 3. Aircrafts landed and disembarked passengers at national airports – daily



Source: Survey to airports and aerodromes (ANA/ANAC/Statistics Portugal)

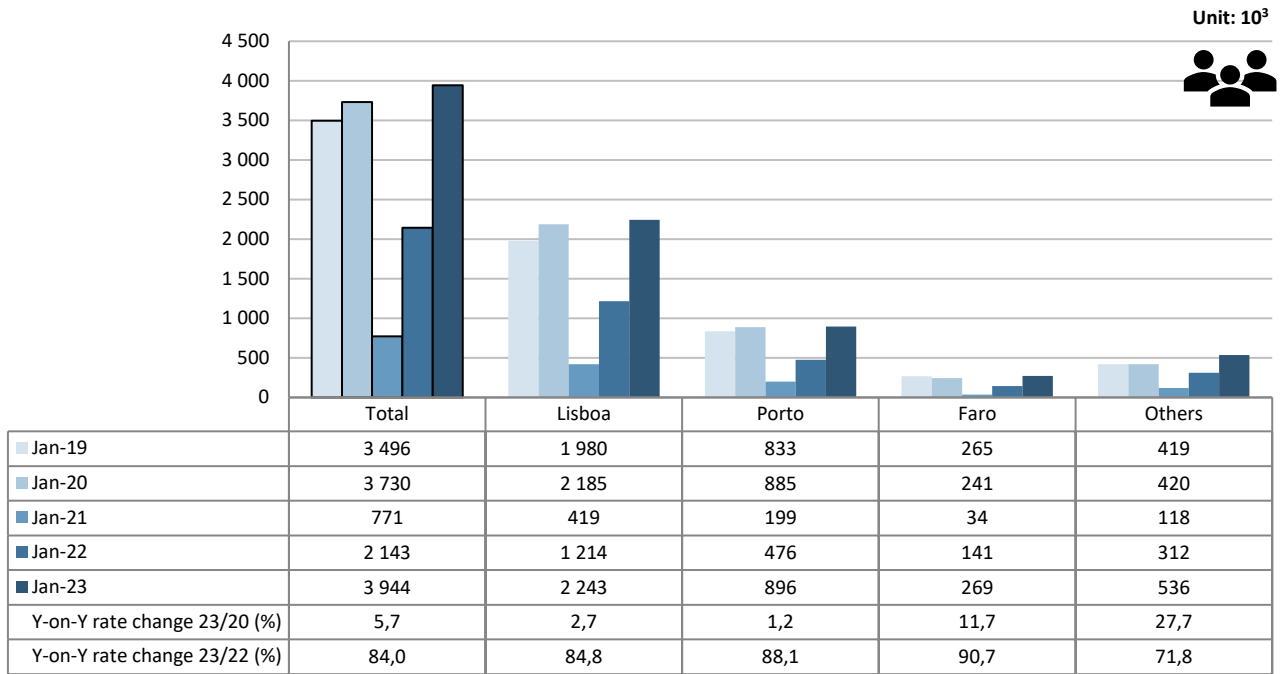
Movement of passengers at Madeira airport surpassed that of Faro, corresponding to the 3rd largest in January 2023

In January 2023, the movement of passengers in Lisboa airport corresponded to 56.9% of total handled passengers (2.2 million), +84.8% vis-à-vis January 2022 (+2.7% compared with January 2020). Faro airport almost doubled the value recorded in January 2022 (+90.7%) and recorded the highest growth compared to January 2020 (+11.7%). The Porto airport concentrated 22.7% of total passengers handled and increased by 88.1% compared to January 2022 (+1.2% vis-à-vis January 2020).

It is important to highlight that the Madeira airport was the 3rd airport with the highest passenger traffic in January 2023 (313.7 thousand; +86.0%), surpassing the Faro airport.



Figure 4. Movement of passengers at national airports



Source: Survey to airports and aerodromes (ANA/ANAC/Statistics Portugal)

France was the main country of origin and destination of flights

Considering the volume of passengers disembarked and embarked on international flights in January 2023, France was the main country of origin and destination of flights, but it was Spain and the United Kingdom that registered the highest growths compared to January 2022, occupying second and third position, respectively. Brazil and Germany switched between 4th and 5th position if country of origin or destination of the flights.

Table 1. Main countries of origin and destination of flights with passengers at national airports

Ranking	Country of origin (of the flight)	Jan 2023		Ranking	Country of destination (of the flight)	Jan 2023	
		Passengers disembarked (10 ³)	Y-on-Y growth rate (%)			Passengers embarked (10 ³)	Y-on-Y growth rate (%)
1	France	238,0	80,8	1	France	273,6	72,8
2	Spain	225,0	134,8	2	Spain	237,8	142,2
3	United Kingdom	188,3	154,5	3	United Kingdom	232,2	114,9
4	Brazil	115,6	73,8	4	Germany	130,3	37,4
5	Germany	111,7	68,9	5	Brazil	107,8	91,0

Source: Survey to airports and aerodromes (ANA/ANAC/Statistics Portugal)

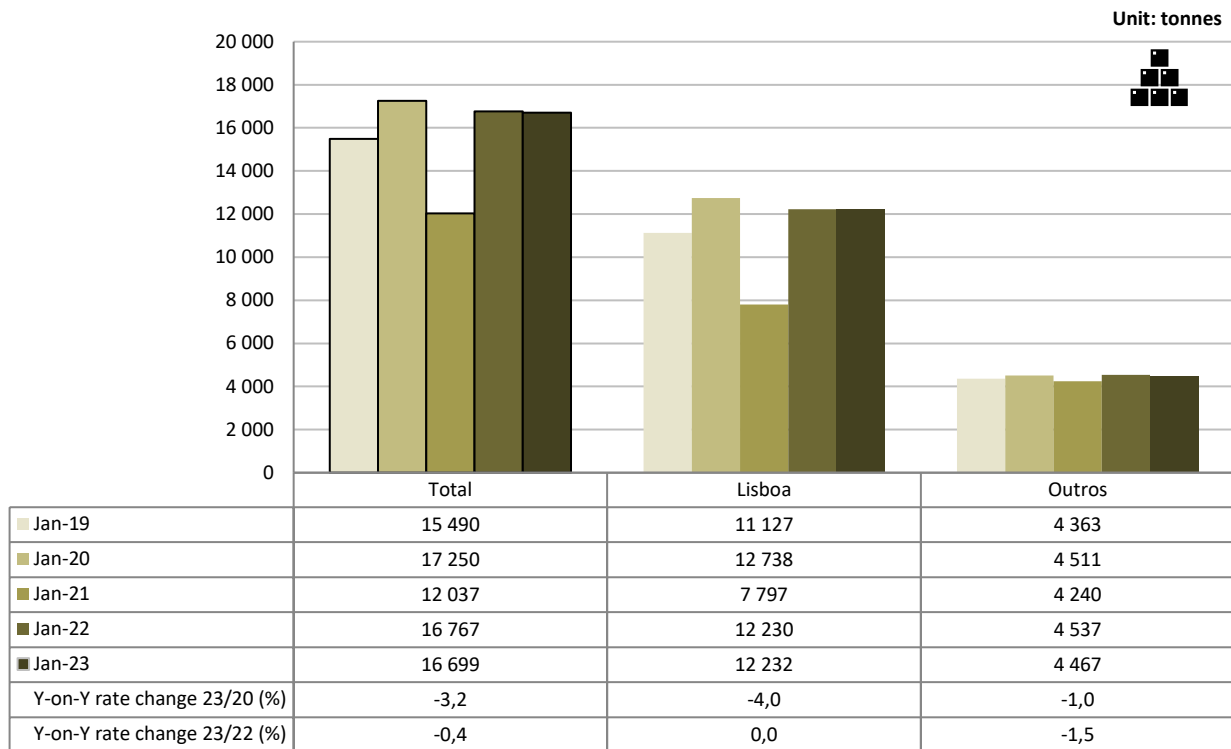


Movement of freight and mail with slight decrease

In January 2023, there was a slight decrease (-0.4%) in freight and mail handled at national airports (-3.2% compared with January 2020). The movement of freight and mail at Lisboa airport represented 73.2% of the total, corresponding to 12.2 thousand tonnes (value similar to January 2022).

Considering the group of other airports, the movement of freight and mail decreased by 1.5% (-1.0% compared with January 2020).

Figure 5. Freight and mail movement at national airports



Source: Survey to airports and aerodromes (ANA/ANAC/Statistics Portugal)



METHODOLOGICAL NOTES

In this Press Release the following statistical data are used:

2023: preliminary results;

2022: provisional results;

2019, 2020 e 2021: definitive results.

Main national airports (considered in this Press Release as national airports): Lisboa, Porto, Faro, Ponta Delgada, Madeira, Porto Santo, Beja, Horta, Flores, Santa Maria, Terceira, Pico, Graciosa, São Jorge, Corvo, Portimão, Bragança, Cascais, Vila Real and Viseu.

SOURCES: Survey to airports and aerodromes (ANA/ANAC/Statistics Portugal)

MAIN CONCEPTS:

Commercial aviation - Air transport flight performed for the public transport of passengers, freight or mail, for remuneration and for hire.

Commercial air traffic - Movement of aircrafts, passengers, freight and mail in commercial aviation.

Monthly indicators at Statistics Portugal portal:

[Aircrafts landed \(No.\) in airports by Geographic localization, Type of traffic and Nature of traffic; Monthly](#)

[Aircrafts landed \(No.\) in airports by Continent of origin; Monthly](#)

[Aircrafts unglued \(No.\) in airports by Geographic localization, Type of traffic and Nature of traffic; Monthly](#)

[Disembarked passengers \(No.\) in airports by Geographic localization, Type of traffic and Nature of traffic; Monthly](#)

[Disembarked passengers \(No.\) in Airports by Continent of origin; Monthly](#)

[Embarked passengers \(No.\) in airports by Geographic localization, Type of traffic and Nature of traffic; Monthly](#)

[Embarked passengers \(No.\) in airports by Destination continent; Monthly](#)

[Passengers in direct transit \(No.\) in airports by Geographic localization, Type of traffic and Nature of traffic; Monthly](#)

[Disembarked load \(t\) in airports by Geographic localization, Type of traffic and Nature of traffic; Monthly](#)

[Embarked load \(t\) in airports by Geographic localization, Type of traffic and Nature of traffic; Monthly](#)

[Disembarked mail \(t\) in airports by Geographic localization, Type of traffic and Nature of traffic; Monthly](#)

[Embarked mail \(t\) in airports by Geographic localization, Type of traffic and Nature of traffic; Monthly](#)



INSTITUTO NACIONAL DE ESTATÍSTICA
STATISTICS PORTUGAL

press release



ACRONYMS AND DESIGNATIONS

ANA	Portugal Airports, S.A.
ANAC	National Civil Aviation Authority
INE	Statistics Portugal

Next Press Release (monthly) - Air Transport Flash Statistics – April 13, 2023

Next Press Release (quarterly) - Transport activities (1st Q 2023) – June 6, 2023
