



13th January 2023

VITAL STATISTICS – Monthly data

December 2022

Rectified version at 4:30 pm

Page 1, 3rd paragraph, 2nd line: where it read "... of 2022 (79,269) ...", now reads "... of 2022 (76,269) ..."

DEATHS, LIVE BIRTHS AND MARRIAGES

IN 2022, 124,755 DEATHS WERE REGISTERED IN PORTUGAL, 0.3% LESS THAN IN 2021

In 2022, there were 124,755 deaths in Portugal, minus 430 (-0.3%) than in 2021 and 1,035 more (0.8%) than in 2020. The number of deaths from COVID-19 recorded in 2022 was 6,822 (11,988 in 2021 and 6,986 in 2020), corresponding to 5.5% of all deaths.

In December 2022, the number of deaths was 12,244, higher than the numbers registered in November 2022 (2,047 more deaths; +20.1%) and in December 2021 (772 more deaths; +6.7%). In this month, the number of deaths due to COVID-19 increased to 278 (51 more deaths than in November 2022), accounting for 2.3% of all deaths. Compared with December 2021, there was a decrease of 241 deaths due to COVID-19.

In November 2022, 7,164 children were born alive, corresponding to an increase of 9.1% compared to November 2021 (6,565). The total number of live births registered in the first eleven months of 2022 (76,269) was higher than the value observed in the same period of 2021 (72,869), representing a further 3,400 (+4.7%) live births.

In November 2022, the natural balance was -3,017, a slight improvement compared to the same month of 2021, when it reached the value of -3,813. In the first eleven months of 2022, the cumulative value of the natural balance was -35,999, also registering an improvement from the value registered in the same period of 2021 (-40,701).

In November 2022, 1,968 marriages were celebrated, corresponding to an increase of 20.9% compared to the number of marriages held in November 2021 (340 more marriages). In the first eleven months of 2022, 34,685 marriages were celebrated, 7,338 more (+28.7%) than in the same period of 2021.

In this press release, Statistics Portugal provides **preliminary data** on the number of deaths per month until December 2022, and per week until the 52nd week of 2022 (December 26th, 2022, to January 1st, 2023), and the number of live births and marriages per month until November 2022, that occurred in the national territory. The indicators published and analyzed in this Press Release are available on the Official Statistics Portal (www.ine.pt), with geographical breakdowns NUTS 2 and NUTS 3. The hyperlinks to these statistics can be found in the Excel file published together with this Press Release. The information is obtained from the Sistema Integrado do Registo e Identificação Civil (SIRIC) until January 10th, 2023. The data presented regarding the number of deaths due to COVID-19, whose source is the report "Number of New Cases and Deaths Per Day" of the Directorate-General for Health, were extracted on January 10th, 2023.

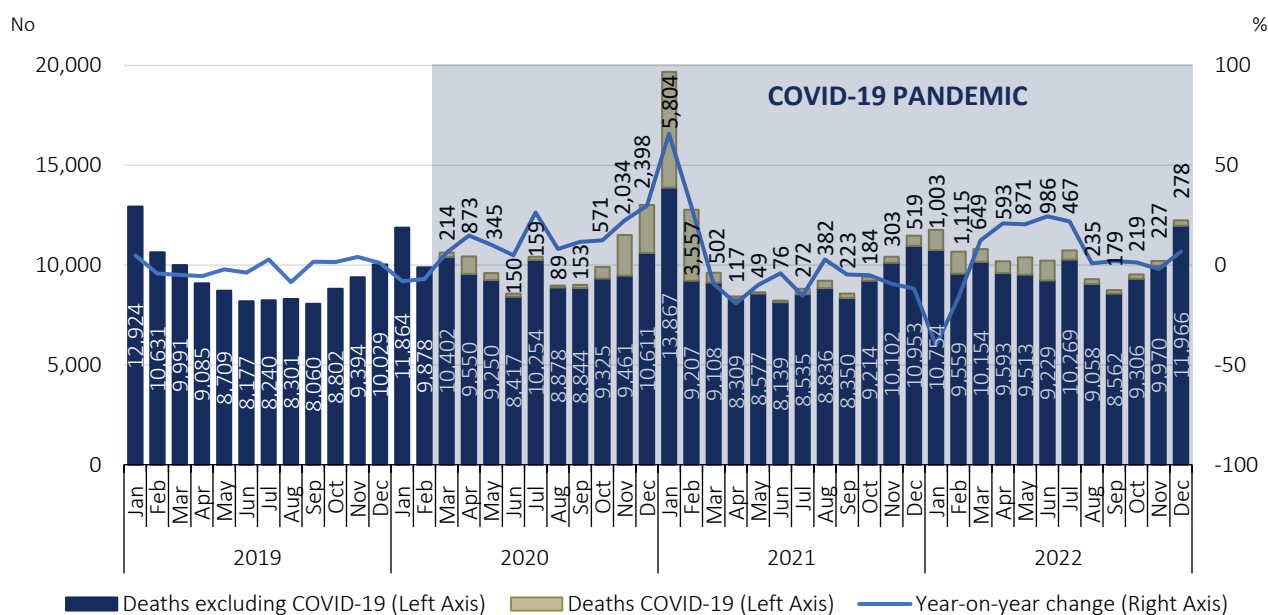
In December 2022, mortality increased by 6,7% when compared to the same month of 2021

In 2022, there were 124,755 deaths in Portugal, minus 430 (-0.3%) than in 2021 and, respectively, 1,035 (+0.8%) and 12,412 (+11.0%) more than in 2020 and in 2019. The number of deaths due to COVID-19 was 6,822 (11,988 in 2021 and 6,986 in 2020), corresponding to 5.5% of all deaths (9.6% in 2021 and 6.2 % in 2020).

In January and February 2022, mortality decreased by 40.2% (7,914 fewer deaths) and 16.4% (2,090 fewer deaths), respectively, compared to the same months of 2021. As of March 2022, and except for November, the number of deaths was always higher than that registered in 2021, particularly from April to July, when there were increases of more than 20% compared to the same months of 2021.

In December 2022, the number of deaths rose to 12,244, 2,047 more than in the previous month. Compared to the same month of 2021, the number of deaths increased (772 more deaths; +6.7%). The number of deaths due to COVID-19 increased to 278 (51 more than in November 2022), accounting for 2.3% of all deaths. Compared to December 2021, there was a decrease of 241 deaths (-46.4%) due to COVID-19.

Figure 1. Deaths and year-on-year change, January 2019 to December 2022



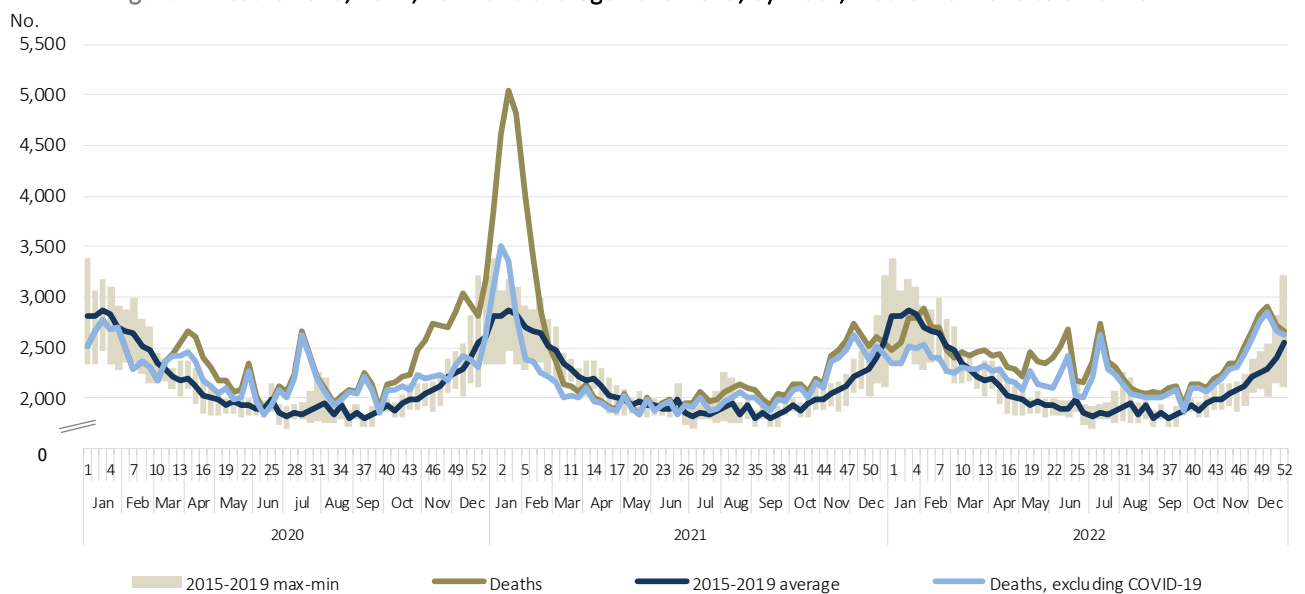
Source: Statistics Portugal, Deaths. Directorate-General of Health, [Number of New Cases and Deaths Per Day](#) (extracted on 10/01/2023).



Between January 31st and February 20th, 2022 (weeks 5 to 7), the number of deaths was higher than the average of the 5 years before the pandemic¹. Between February 21st and March 6th (weeks 8 and 9), the number of deaths returned to figures below the 2015-2019 average, as had already been registered in the last week of 2021 and the first four weeks of 2022. From March 7th to December 25th (weeks 10 to 51), the number of weekly deaths was always above the average for the reference period (2015-2019).

In the 52nd week of 2022 (December 26th, 2022, to January 1st, 2023), there were 2,669 deaths, also higher than the average for 2015-2019. The number of deaths due to COVID-19 was 47, accounting for 1.8% of all deaths.

Figure 2. Deaths 2020, 2021, 2022 and average 2015-2019, by week, weeks 1 of 2020 to 52 of 2022

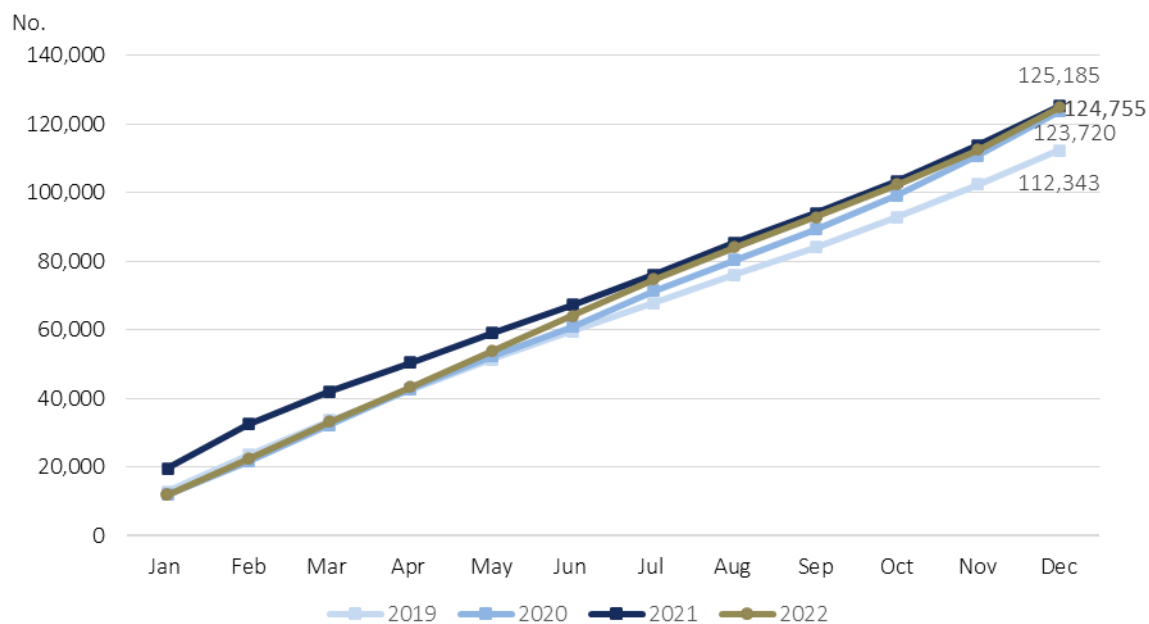


Source: Statistics Portugal, Deaths. Directorate-General of Health, [Number of New Cases and Deaths Per Day](#) (extracted on 10/01/2023).

Despite the sharp reduction in mortality observed in the first two months of 2022, compared to the same months of 2021, the number of deaths registered in 2022 (124,755) was, only, slightly lower than the total for 2021 (430 fewer deaths; -0.3%), in particular due to the increase in mortality from March to July.

¹ In this press release, to measure the variation in the number of deaths in relation to the pre-pandemic period, a simple calculation measure was adopted, using the average number of deaths for the five-year period 2015-2019 as basis for comparison. This measure should not, therefore, be confused with other indicators published in some studies, specially by the EuroMOMO platform. For more information see <https://www.euromomo.eu/>.

Figure 3. Monthly deaths (cumulative values), 2019, 2020, 2021, and 2022

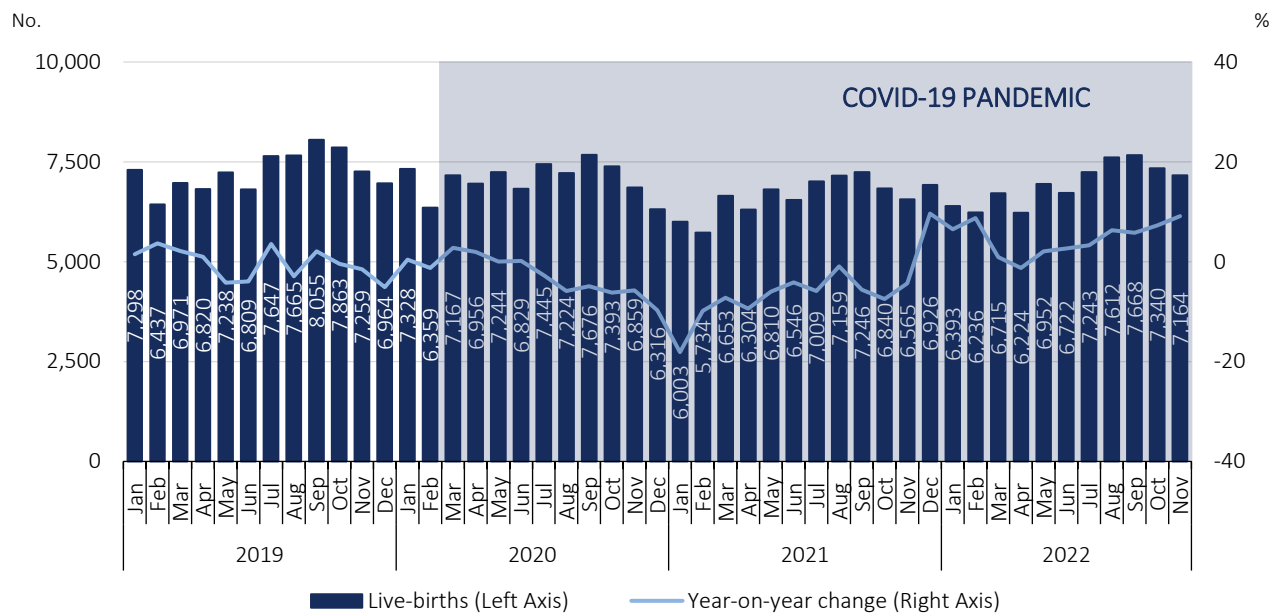


Source: Statistics Portugal, Deaths.

In November 2022, the number of live births increased 9.1% compared to the same month of 2021

In November 2022, 7,164 children were born alive, corresponding to an increase of 9.1% (599 more) when compared to the same month of 2021.

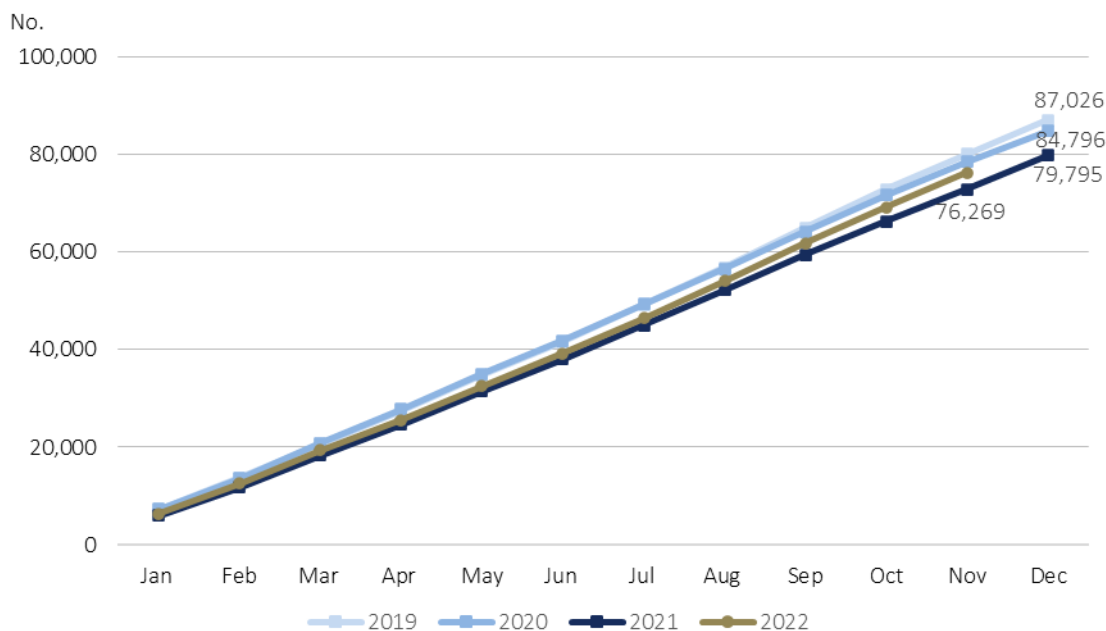
Figure 5. Live births and year-on-year change, January 2019 to November 2022



Source: Statistics Portugal, Live births.

The total number of live births registered in the first eleven months of 2022 (79,269) was higher than that observed in the same period of 2021 (72,869), representing a further 3,400 live births (+4.7%).

Figure 6. Monthly live births (cumulative values), 2019, 2020, 2021, and 2022

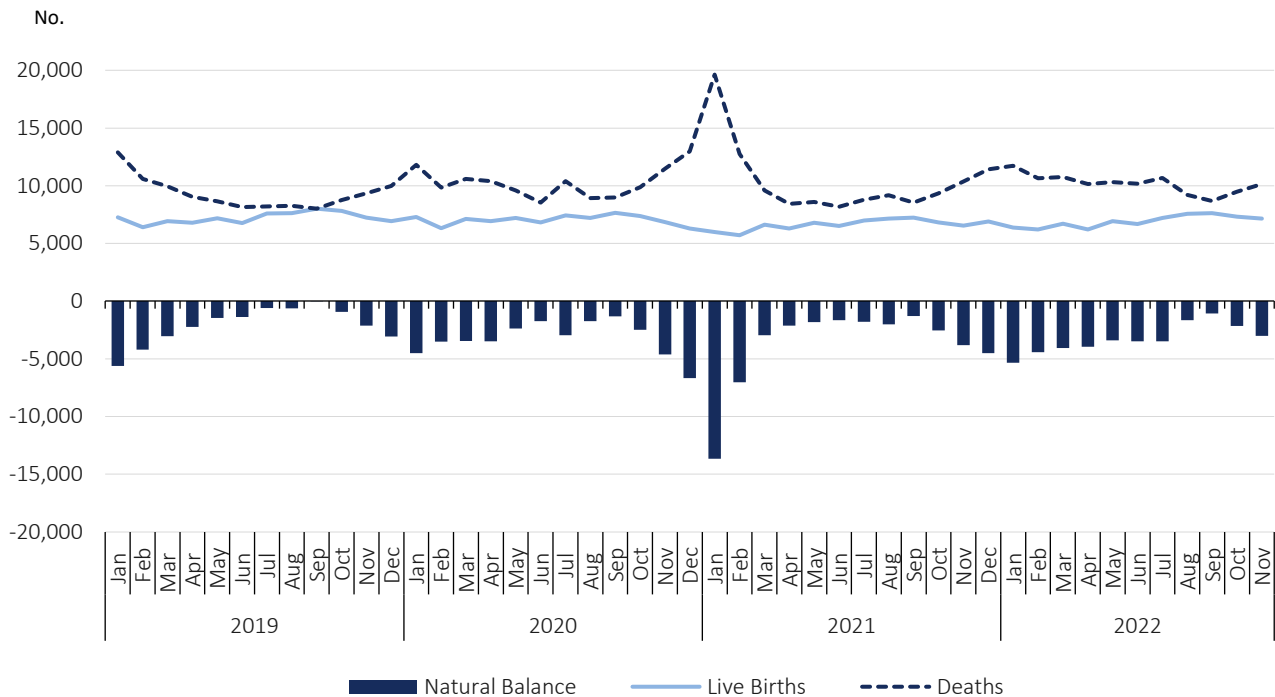


Source: Statistics Portugal, Live births.

In November 2022, the natural balance was -3,017

In November 2022, the natural balance registered the value of -3,017, slightly improving when compared to the value registered in the same month of 2021 (-3,813).

Figure 7. Live births, deaths, and natural balance², January 2019 to November 2022

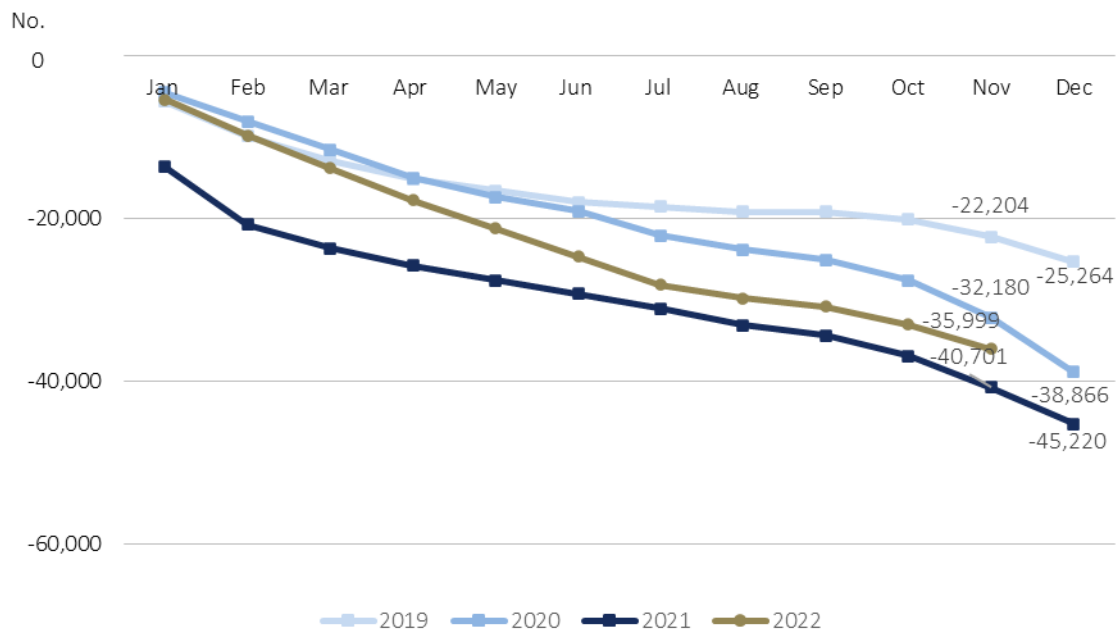


Source: Statistics Portugal, Live births, Deaths, and Demographic indicators.

In the first eleven months of 2022, the cumulative value of the natural balance was -35,999, improving the figure registered in the same period of 2021 (-40,701), though worsening when compared to the same period of 2019 (-22,204) and of 2020 (-32,180).

² The natural balance is calculated based on the number of live births of mothers residing in Portugal and the number of deaths of residents in Portugal.

Figure 8. Monthly natural balance (cumulative values), 2019, 2020, 2021, and 2022

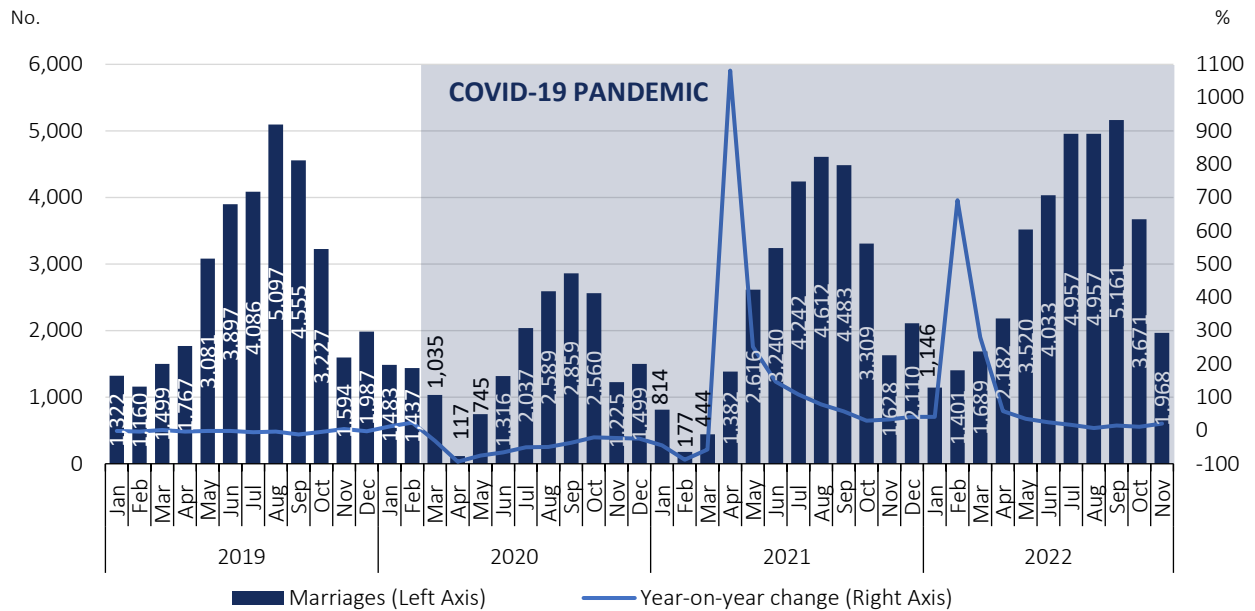


Source: Statistics Portugal, Live births, Deaths, and Demographic indicators.

In November 2022, the number of celebrated marriages increased by 20.9% compared to November 2021

In November 2022, 1,968 marriages were celebrated, corresponding to an increase of 20.9% regarding the number of marriages celebrated in November 2021 (340 more marriages).

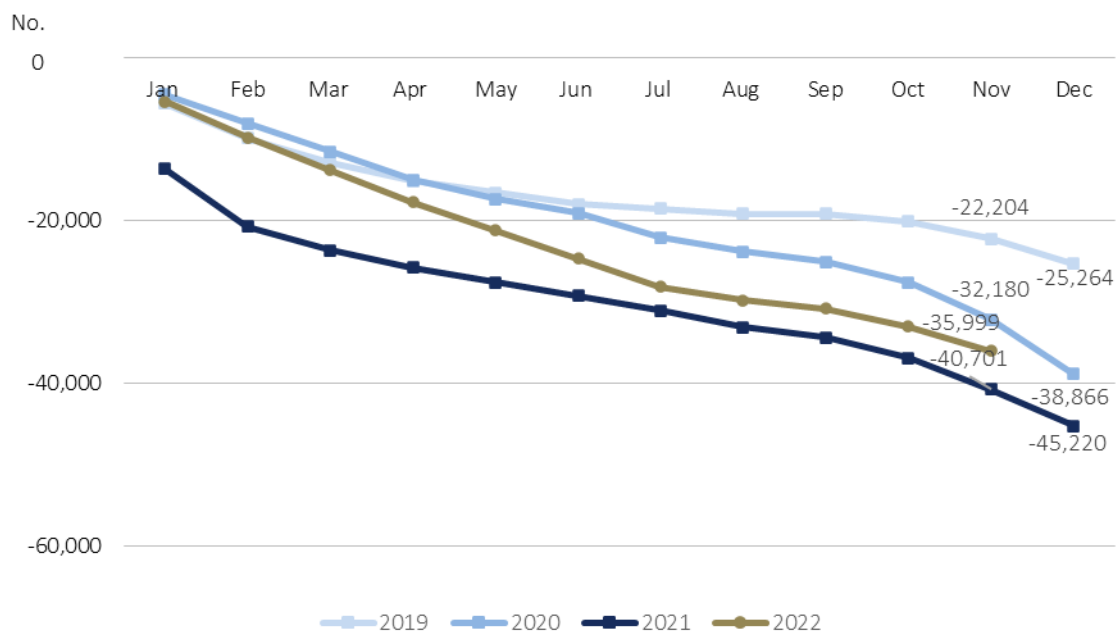
Figure 9. Marriages and year-on-year change, January 2019 to November 2022



Source: Statistics Portugal, Marriages.

In the first eleven months of 2022, 34,685 marriages were celebrated, 7,738 more (+28.7%) than in the same period of 2021, and respectively, 3,400 (+10.9%) and 17,282 (+99.3%) more than in the same months of 2019 and 2020.

Figure 10. Monthly marriages (cumulative values), 2019, 2020, 2021, and 2022



Source: Statistics Portugal, Marriages.



TECHNICAL NOTE

Statistics Portugal releases the **preliminary** monthly **numbers** of deaths, live births, and marriages based on the information registered in the Civil Register Offices until January 10th, 2023. Indicators on the preliminary monthly number of live births, deaths, and marriages, from January to November 2022, with geographical breakdowns up to NUTS 3, as well as weekly number of deaths, until the 52nd week 2022, by NUTS 3 and daily number of deaths, until January 1st, 2023, by NUTS 2 are made available on the Statistics Portugal Website.

Data are obtained from statistical operations of direct and exhaustive collection on live births, deaths and marriages in Portuguese territory using facts that are subject to compulsory civil registration (birth and death) in the Sistema Integrado do Registo e Identificação Civil (SIRIC).

In addition to administrative information obtained from Civil Register Offices, Statistics Portugal collects an additional set of variables identified as statistically pertinent to the National Statistic System (NSS) and the European Statistical System (EES). Data is recorded and sent electronically, in compliance with the requirements set out by Statistics Portugal and laid down in liaison with the Instituto de Registos e Notariado (IRN) and the Instituto de Gestão Financeira e Equipamentos da Justiça (IGFEJ).

Data on the number of deaths due to COVID-19 are also used, whose source is the “Number of New Cases and Deaths Per Day” Report of the Directorate-General for Health.

DEFINITIONS

Marriage: Contract signed by two persons that intend to start a family in full partnership and cohabitation according to legislation. Note: marriage can be held between persons from different or same sex.

Live birth: This is the complete expulsion or extraction from the mother's body, irrespective of the duration of the pregnancy, of a product of fertilization that, after separation, breathes or shows any other signs of life, such as a beating of the heart or umbilical cord or actual contraction of any muscle subject to voluntary movement, whether the umbilical cord has been severed and whether the placenta is retained.

Death: The permanent disappearance of vital functions.

Natural balance: The difference between the number of live births and the number of deaths during a given period.

Year-on-year change: The year-on-year change compares the level of a variable between the reference month and the same month of the previous year.

Detailed methodological information available at: www.ine.pt, option Products, Metadata system.

Detailed statistical information available at: www.ine.pt, option Products, Statistical data, database, theme Population, subtheme Births and natality rates and subtheme Mortality and life expectancy.



Next Press Release

17th February 2023: “Vital Statistics - Monthly data – January 2023”.
