



INSTITUTO NACIONAL DE ESTATÍSTICA  
STATISTICS PORTUGAL

press release



16 December 2022  
TRANSPORT ACTIVITIES  
Air Transport Flash Statistics  
October 2022

## FOR THE FIRST TIME THE MOVEMENT OF PASSENGERS AT NATIONAL AIRPORTS EXCEEDED 2019 LEVEL

In **October 2022**, 5.7 million passengers and 19.1 thousand tonnes of freight and mail were handled at national airports, corresponding to year-on-year variations of +42.6% and +5.1%, respectively.

For the first time, the movement of passengers exceeded 2019 level (+4.0% in October; -1.0% in the previous month), while the movement of freight and mail decreased by 3.4% (+4.0% in the previous month).

In October 2022, there was a daily average of 90.7 thousand passengers disembarked at national airports (97.2 thousand in the previous month), exceed that recorded in October 2019 (85.9 thousand).

Between **January and October 2022**, the number of passengers handled increased by 145.5% vis-à-vis the same period of 2021 (-7.0% compared to the same period of 2019). The United Kingdom was the main country of origin and destinations of flights, with growths of 257.4% in the number of disembarked passengers and 262.3% in the number of embarked passengers.

---

### Monthly traffic at national airports

In **October 2022**, 20.6 thousand commercial aircrafts landed at national airports, corresponding to 5.7 million passengers (embarked, disembarked and direct transits) and 19.1 thousand tonnes of freight and mail were handled (+27.7%, +42.6% and +5.1%, respectively, compared to October 2021).

Compared to October 2019, there were increases of 2.3% in the number of aircrafts landed and 4.0% in the movement of passengers, with the movement of freight and mail decreasing by 3.4% (-1.4%, -1.0% and +4.0% in the previous month, respectively).

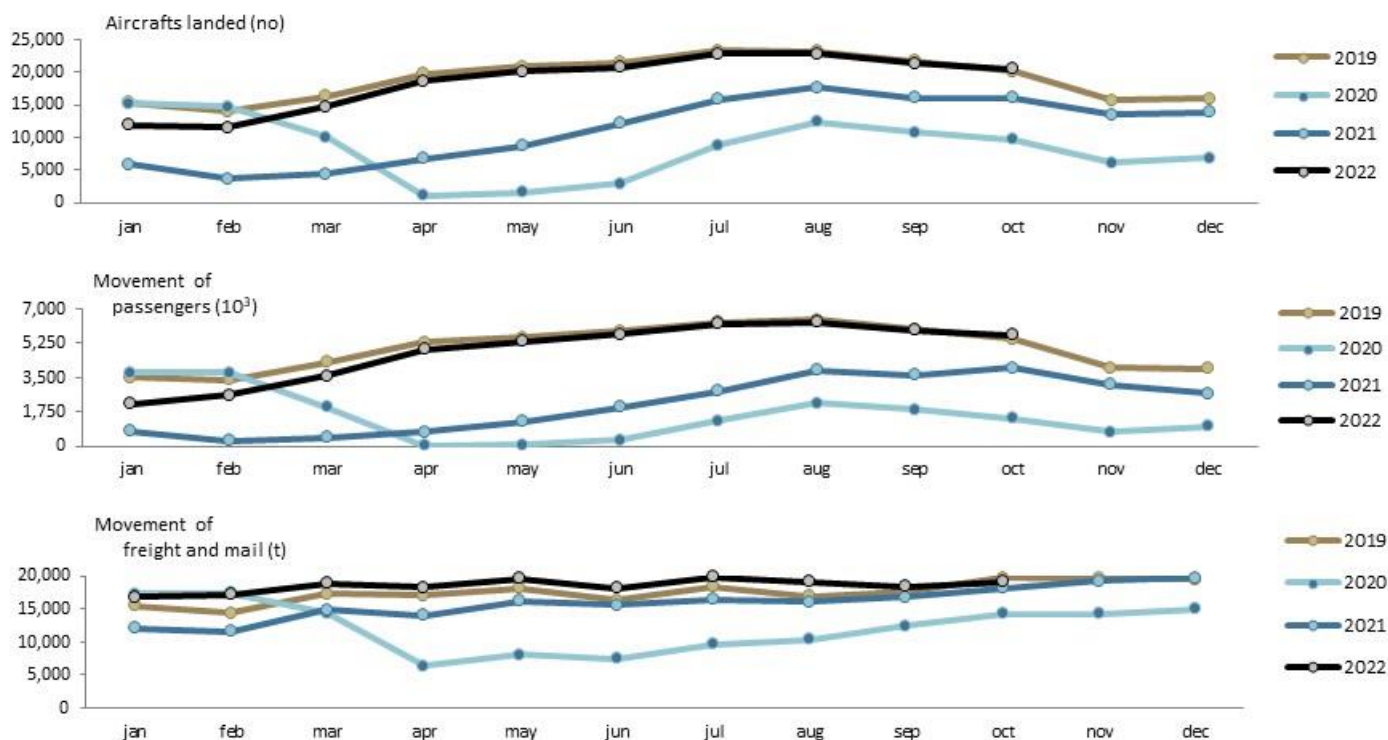


INSTITUTO NACIONAL DE ESTATÍSTICA  
STATISTICS PORTUGAL

press release



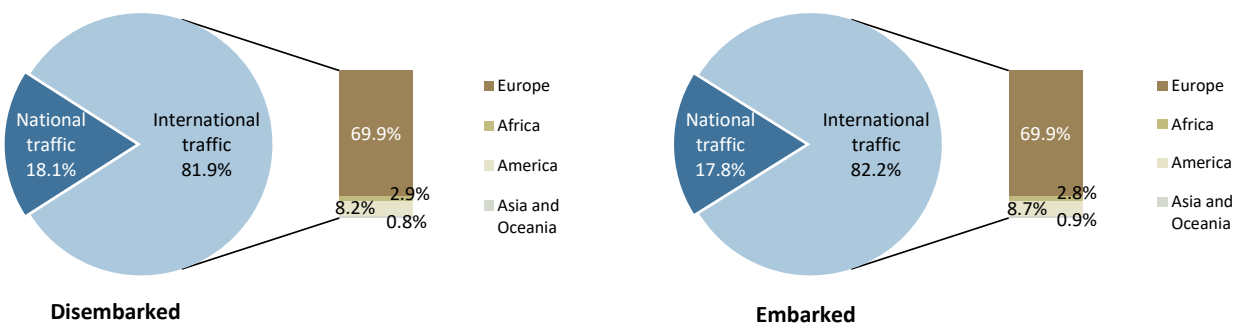
Figure 1. Aircrafts landed, passengers and freight/mail movement at national airports



Source: Survey to airports and aerodromes (ANA/ANAC/Statistics Portugal)

Considering the total number of passengers disembarked in October 2022, 81.9% corresponded to international traffic (80.0% in the same month of 2021), the majority coming from the European continent (69.9% of the total). Regarding embarked passengers, 82.2% corresponded to international traffic (80.0% in October 2021), with the main destination being airports at the European continent (69.9% of the total).

Figure 2. Proportion of passengers disembarked and embarked at national airports by nature of traffic – October 2022



Source: Survey to airports and aerodromes (ANA/ANAC/Statistics Portugal)

TRANSPORT ACTIVITIES - Air transport flash statistics – October 2022



INSTITUTO NACIONAL DE ESTATÍSTICA  
STATISTICS PORTUGAL

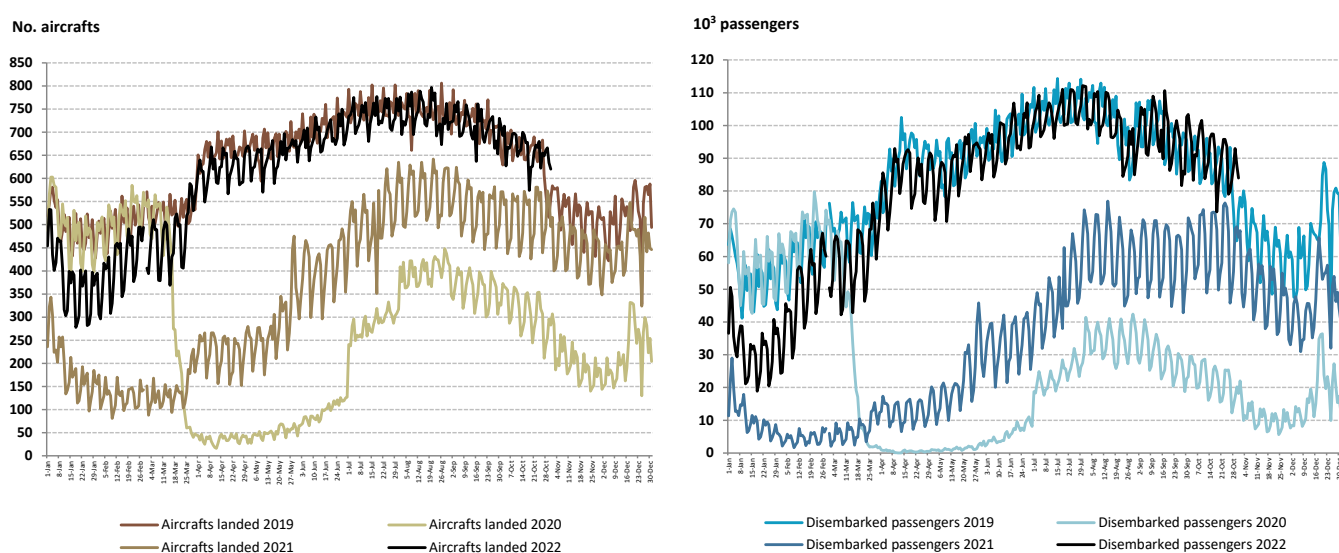
press release



The daily movement of aircrafts and passengers is typically heavily influenced by seasonal and weekly cycle fluctuations but was significantly affected by the impact of the pandemic in 2020 and 2021, as shown in the figure below.

In 2022, there has been a trend towards approaching the levels recorded in the pre-pandemic period, with the month of October recording a daily average of 90.7 thousand passengers disembarked at national airports (97.2 thousand in the previous month), 5.6% higher than that recorded in October 2019 (85.9 thousand).

Figure 3. Aircrafts landed and disembarked passengers at national airports – daily



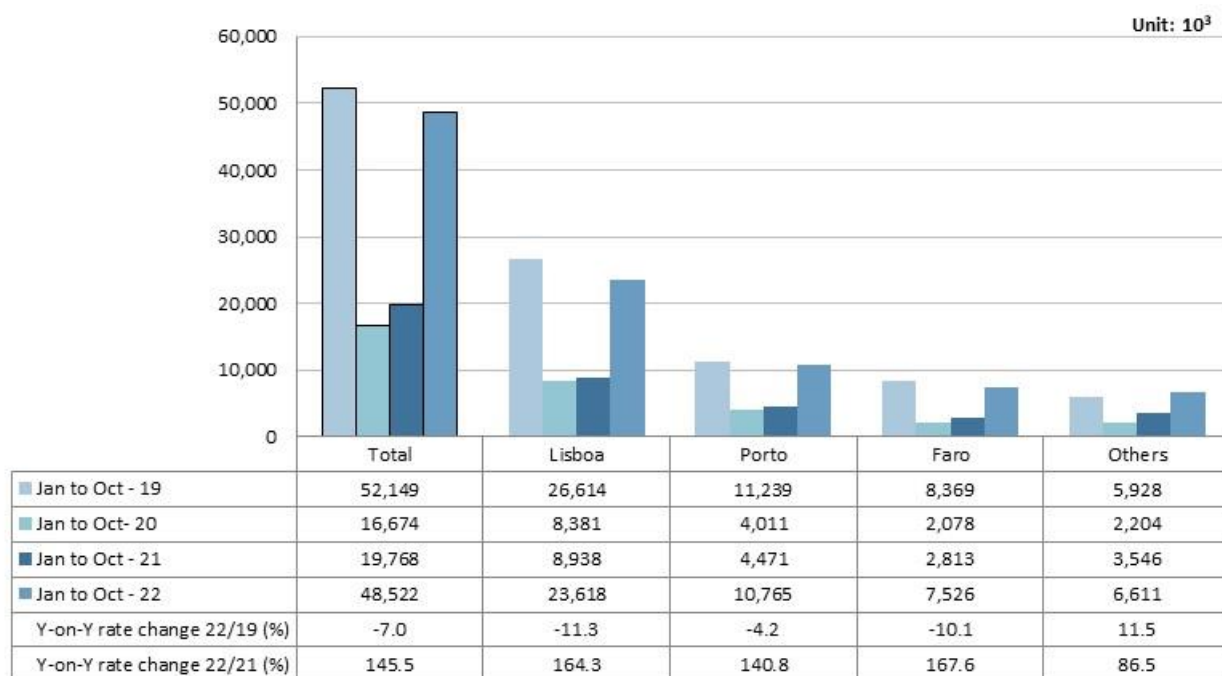
Source: Survey to airports and aerodromes (ANA/ANAC/Statistics Portugal)

### Accumulated traffic at national airports

Between **January and October 2022**, the number of passengers handled at national airports increased by 145.5% vis-à-vis the same period of 2021 (-7.0% compared to the same period of 2019). The movement of passengers in Lisboa airport corresponded to 48.7% of total handled passengers (23.6 million) and increased by 164.3% vis-à-vis the same period of 2021 (-11.3% compared with the same period of 2019). Considering the three airports with the highest annual passenger traffic, Faro recorded the major increase compared to 2021 (+167.6%) and Porto recorded the closest approach to 2019 levels (-4.2%).



Figure 4. Movement of passengers at national airports



Source: Survey to airports and aerodromes (ANA/ANAC/Statistics Portugal)

Considering the volume of passengers disembarked and embarked on international flights between January and October 2022, the United Kingdom was the main country of origin and destination of flights, with year-on-year growths of 257.4% in the number of disembarked passengers and 262.3% in the number of embarked passengers, compared to 2021. France occupied the second position as the main country of origin and destination, and Spain took the 3<sup>rd</sup> position, recording significant increases compared to the same period of 2021 (+238.6% in the number of disembarked passengers and +232.0% in the number of embarked passengers).

Table 1. Main countries of origin and destination of flights with passengers at national airports

Ranking	Country of origin (of the flight)	Jan to Oct 2022	
		Passengers disembarked (10 <sup>3</sup> )	Y-on-Y growth rate (%)
1	United Kingdom	3,595.0	257.4
2	France	3,100.9	126.0
3	Spain	2,245.9	238.6
4	Germany	1,933.3	144.6
5	Switzerland	1,011.7	65.2

Ranking	Country of destination (of the flight)	Jan to Oct 2022	
		Passengers embarked (10 <sup>3</sup> )	Y-on-Y growth rate (%)
1	United Kingdom	3,590.5	262.3
2	France	3,076.5	127.8
3	Spain	2,211.8	232.0
4	Germany	1,933.4	152.9
5	Switzerland	1,018.7	65.4

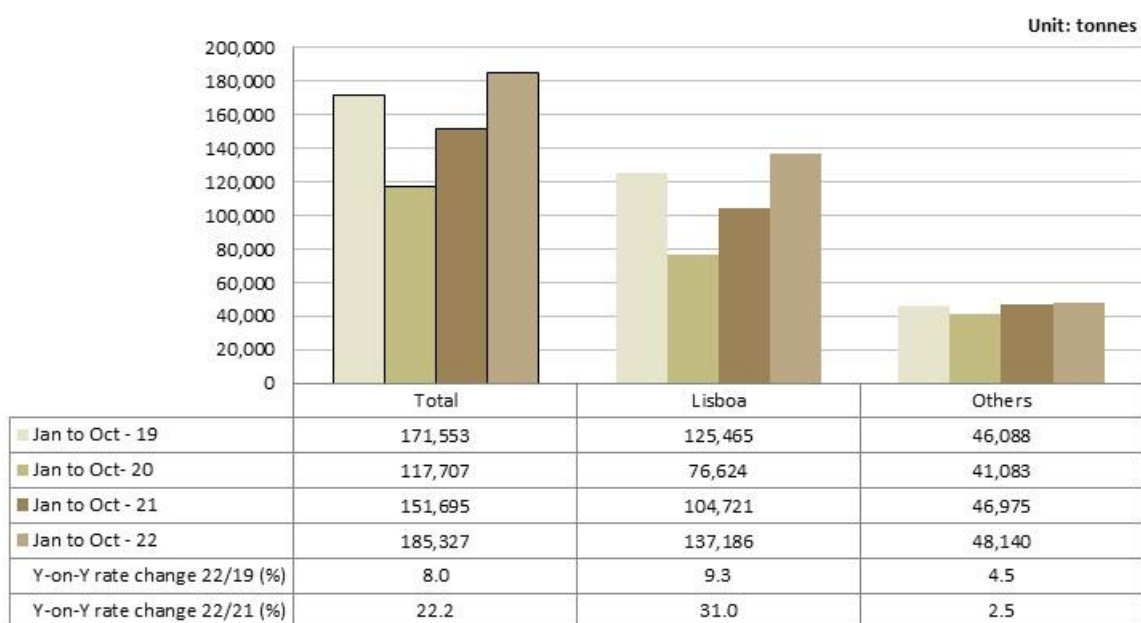
Source: Survey to airports and aerodromes (ANA/ANAC/Statistics Portugal)



Between January and October 2022, the movement of freight and mail at Lisboa airport represented 74.0% of the total, corresponding to 137.2 thousand tonnes (+31.0% vis-à-vis the same period of 2021). Compared to the same period of 2019, there was an increase of 9.3%.

Considering the group of other airports, the movement of freight and mail increased by 2.5% (+4.5% compared to the same period of 2019).

Figure 5. Freight and mail movement at national airports



Source: Survey to airports and aerodromes (ANA/ANAC/Statistics Portugal)





INSTITUTO NACIONAL DE ESTATÍSTICA  
STATISTICS PORTUGAL

press release



## METHODOLOGICAL NOTES

In this Press Release the following statistical data are used:

2022: preliminary results;

2019, 2020 e 2021: definitive results.

**Main national airports** (considered in this Press Release as national airports): Lisboa, Porto, Faro, Ponta Delgada, Funchal, Porto Santo, Beja, Horta, Flores, Santa Maria, Terceira (Lajes), Pico, Graciosa, São Jorge, Corvo, Portimão, Bragança, Cascais, Vila Real and Viseu.

**SOURCES:** Survey to airports and aerodromes (ANA/ANAC/Statistics Portugal)

## MAIN CONCEPTS:

**Commercial aviation** - Air transport flight performed for the public transport of passengers, freight or mail, for remuneration and for hire.

**Commercial air traffic** - Movement of aircrafts, passengers, freight and mail in commercial aviation.

## Monthly indicators at Statistics Portugal portal:

[Aircrafts landed \(No.\) in airports by Geographic localization, Type of traffic and Nature of traffic; Monthly](#)

[Aircrafts landed \(No.\) in airports by Continent of origin; Monthly](#)

[Aircrafts unglued \(No.\) in airports by Geographic localization, Type of traffic and Nature of traffic; Monthly](#)

[Disembarked passengers \(No.\) in airports by Geographic localization, Type of traffic and Nature of traffic; Monthly](#)

[Disembarked passengers \(No.\) in Airports by Continent of origin; Monthly](#)

[Embarked passengers \(No.\) in airports by Geographic localization, Type of traffic and Nature of traffic; Monthly](#)

[Embarked passengers \(No.\) in airports by Destination continent; Monthly](#)

[Passengers in direct transit \(No.\) in airports by Geographic localization, Type of traffic and Nature of traffic; Monthly](#)

[Disembarked load \(t\) in airports by Geographic localization, Type of traffic and Nature of traffic; Monthly](#)

[Embarked load \(t\) in airports by Geographic localization, Type of traffic and Nature of traffic; Monthly](#)

[Disembarked mail \(t\) in airports by Geographic localization, Type of traffic and Nature of traffic; Monthly](#)

[Embarked mail \(t\) in airports by Geographic localization, Type of traffic and Nature of traffic; Monthly](#)



INSTITUTO NACIONAL DE ESTATÍSTICA  
STATISTICS PORTUGAL

press release



#### ACRONYMS AND DESIGNATIONS

ANA	Portugal Airports, S.A.
ANAC	National Civil Aviation Authority
INE	Statistics Portugal

---

**Next Press Release (monthly)** - Air Transport Flash Statistics – January 13, 2023

**Next Press Release (quarterly)** - Transport activities (4<sup>th</sup> Q 2022) - March 8, 2023

---