



2 November 2022  
MONTHLY EMPLOYMENT AND UNEMPLOYMENT ESTIMATES  
September 2022

*Tables 1 to 4 were revised on 4-11-2022. "Youth (aged 15 to 24)" was replaced by "Youth (aged 16 to 24)".*

## **IN SEPTEMBER, THE UNEMPLOYMENT RATE STOOD AT 6.1% AND THE LABOUR UNDERUTILISATION RATE AT 11.4%**

### **August 2022:**

- The active population (5,197.7 thousand) increased by 0.1% from July 2022, by 0.3% from May of that year, and by 0.7% from August 2021.
- The employed population (4,884.0 thousand) increased from the three periods under comparison: by 0.1%, 0.3% and 1.0%, respectively.
- The unemployed population (313.7 thousand) increased by 1.0% from July and by 0.7% from May, having decreased by 3.9% from August 2021.
- The unemployment rate stood at 6.0%, remained unchanged from the previous month and from three months before, but decreased by 0.3 pp from a year earlier.
- The inactive population (2,461.0 thousand) decreased from the three periods under comparison: by 0.3%, 0.7% and 2.3%, respectively.
- The labour underutilisation rate was estimated at 11.4%, down 0.1 pp from the previous month and from three months before and down 0.7 pp from the same month of 2021.

### **September 2022<sup>1</sup>:**

- The active population (5,193.5 thousand) decreased by 0.1% from August, increased by 0.3% from June and by 0.6% from September 2021.
- The employed population (4,874.7 thousand) has also decreased from the previous months (0.2%) and increased from three months before (0.1%) and from a year earlier (0.8%).
- The unemployed population (318.8 thousand) increased from the previous month (1.6%) and from three months before (2.7%), having decreased from a year earlier (2.6%).
- The unemployment rate stood at 6.1%, up 0.1 pp from August and from June of 2022 and down 0.2 pp from the same month of 2021.
- The inactive population (2,464.4 thousand) increased by 0.1% from the previous month and decreased by 0.6% from three months earlier and by 2.0% from one year before.

<sup>1</sup> The estimates for the last reference month (in this case, the quarter centred in September 2022: from August to October 2022) were calculated with incomplete information for the last month of the quarter (October 2022). These estimates will be revised next month (as described in the methodological note).



- The labour underutilisation rate stood at 11.4% and remained unchanged from the previous month, having decreased from three months before by 0.2 pp and from the same month of 2021 by 0.5 pp.

The table below presents the main indicators of the Monthly Employment and Unemployment Estimates.

## Monthly Employment and Unemployment Estimates (16 to 74)

### Main Indicators

	Unit	Seasonally adjusted data						
		Aug 2021	Sep 2021	May 2022	Jun 2022	Jul 2022	Aug 2022	Sep 2022 (p)
Active population	Thousands	5,160.3	5,164.2	5,182.3	5,181.0	5,191.4	5,197.7	5,193.5
Employed population		4,833.7	4,837.1	4,870.7	4,870.5	4,880.6	4,884.0	4,874.7
Unemployed population		326.6	327.1	311.6	310.5	310.7	313.7	318.8
Inactive population		2,518.3	2,515.2	2,478.1	2,479.0	2,469.1	2,461.0	2,464.4
Labour underutilisation		644.6	631.8	617.2	618.2	617.2	609.1	607.6
Activity rate	%	67.2	67.2	67.7	67.6	67.8	67.9	67.8
Employment rate		62.9	63.0	63.6	63.6	63.7	63.8	63.7
Unemployment rate		6.3	6.3	6.0	6.0	6.0	6.0	6.1
Inactivity rate		32.8	32.8	32.3	32.4	32.2	32.1	32.2
Labour underutilisation rate		12.1	11.9	11.5	11.6	11.5	11.4	11.4

Source: Statistics Portugal, Labour Force Survey.

Note: (p) – Provisional estimates.

In **August 2022**, from the previous month, the active population increased by 6.3 thousand people (0.1%) and the inactive population decreased by 8.1 thousand (0.3%)<sup>2</sup>. The evolution of the active population was due to the increase of the employed population (3.4 thousand; 0.1%) and of the unemployed population (3.0 thousand; 1.0%). The change in the inactive population was explained, mainly, by the decrease in the number of inactive persons searching for a job but not available to work (5.5 thousand; 13.7%) and in the number of inactive persons available to work but not seeking a job (3.4 thousand; 2.7%).

The increase observed in the active population from three months before (15.4 thousand; 0.3%) came also from the increase of the employed population (13.3 thousand; 0.3%) and of the unemployed population (2.1 thousand; 0.7%). The inactive population decreased from this month (17.1 thousand; 0.7%) due to the decrease in the number of other inactive persons not available to work nor seeking a job (10.5 thousand; 0.5%) and in the number of inactive persons available to work but not seeking for a job (9.9 thousand; 7.4%).

The increase of the active population (37.4 thousand; 0.7%) from August 2021 was followed by an increase in the employed population (50.3 thousand; 1.0%) that surpassed the decrease of the unemployed population

<sup>2</sup> The changes in the active population and in the inactive population are not necessarily symmetrical. They are also influenced by the total population change that result from the natural balance and the net migration.



(12.9 thousand; 3.9%). The inactive population decreased by 57.3 thousand people (2.3%) due to the decrease in the number of other inactive persons not available nor seeking a job (40.8 thousand; 1.7%) and in the number of inactive persons available to work but not seeking for a job (26.7 thousand; 17.8%).

These results determined the following changes in the unemployment rate – that stood at 6.0% in August 2022: the same value as in the previous month and in three months before, but down 0.3 pp the same month of 2021.

**Figure 1. Change in the active, employed, unemployed and inactive population in August 2022**  
(seasonally adjusted data)



Also in August 2022, the labour underutilisation covered 609.1 thousand people, down from the previous month and from three months before (8.1 thousand, which corresponds to 1.3% from both) and from one year earlier (35.5 thousand; 5.5%). The labour underutilisation rate was estimated at 11.4%, down from July and May of 2022 (0.1 pp for both) and from August 2021 (0.7 pp).

In **September 2022**, the estimated active population decreased from the previous month by 4.2 thousand people (0.1%) and the estimated inactive population increased by 3.4 thousand (0.1%). The decrease of the active population resulted from the decrease of the employed population (9.3 thousand; 0.2%) that surpassed the increase of the unemployed population (5.1 thousand; 1.6%). On the other hand, the inactive population increase was explained by the increase observed in the number of inactive persons not available nor seeking a job (9.9 thousand; 0.4%).

The increase of the active population from three months before (12.5 thousand; 0.2%) came from the increase of 4.2 thousand people (0.1%) in the employed population and of 8.3 thousand (2.7%) in the unemployed population. The inactive population decreased by 14.6 thousand (0.6%) in this period mainly due to the decrease of 8.1 thousand people (6.3%) in the number of inactive persons available to work but not seeking for a job and

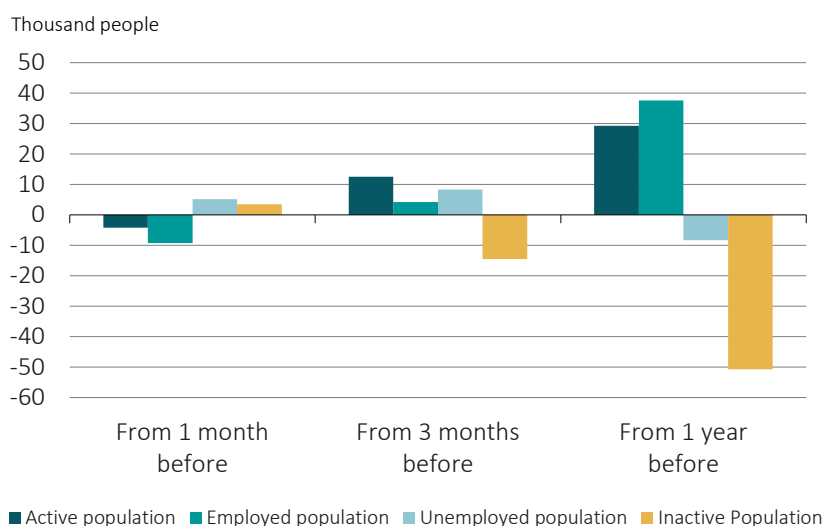


to the decrease of 7.3 thousand (19.5%) in the number of inactive persons seeking for a job, but not available to work.

Finally, the active population increase (29.3 thousand; 0.6%) from September 2021 was followed by an increase of the employed population (37.6 thousand; 0.8%) that offset the decrease of the unemployed population (8.3 thousand; 2.6%). The inactive population decreased by 50.8 thousand people (2.0%) due to the decrease in the number of inactive persons not available to work nor seeking a job (36.8 thousand; 1.6%) and in the number of inactive persons available to work but not seeking for a job (25.7 thousand; 17.5%).

These results determined the following changes in the unemployment rate which stood at 6.1%: up 0.1 pp from both August and June of 2022 and down 0.2 pp from September 2021.

**Figure 2. Change in the active, employed, unemployed and inactive population in September 2022**  
(Seasonally adjusted data)



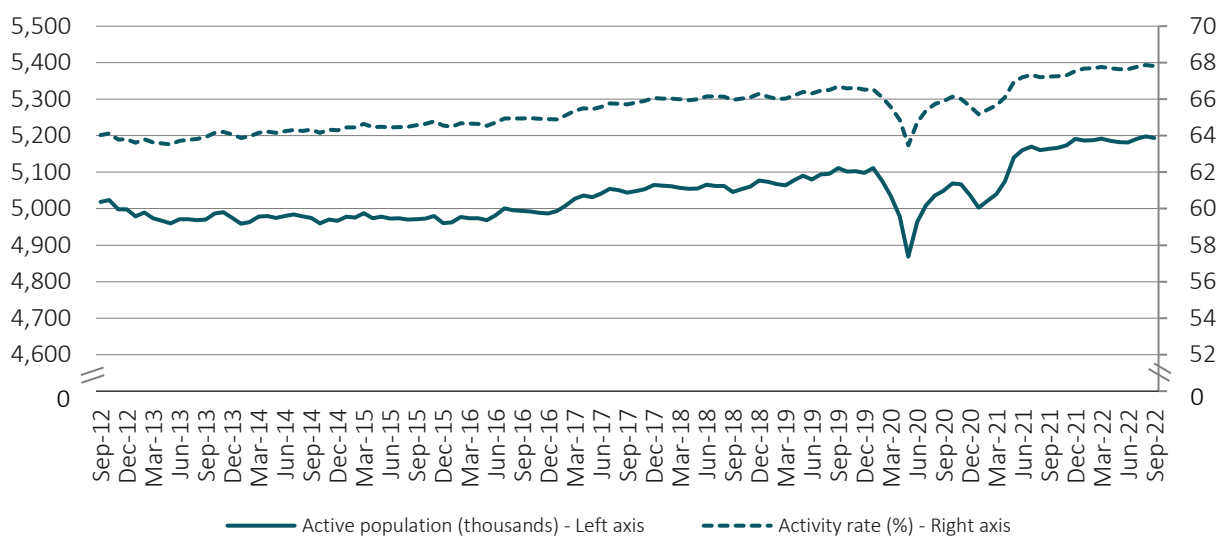
**Note:** The September 2022 estimates are provisional.

Also in September 2022, the labour underutilisation covered 607.6 thousand people, a lower number than in the previous month (1.5 thousand; 0.2%), than in three months before (10.6 thousand; 1.7%) and than in a year earlier (24.2 thousand; 3.8%). The labour underutilisation rate was estimated at 11.4% and remained unchanged from the previous month, down 0.2 pp from three months before and down 0.5 pp from a year earlier.



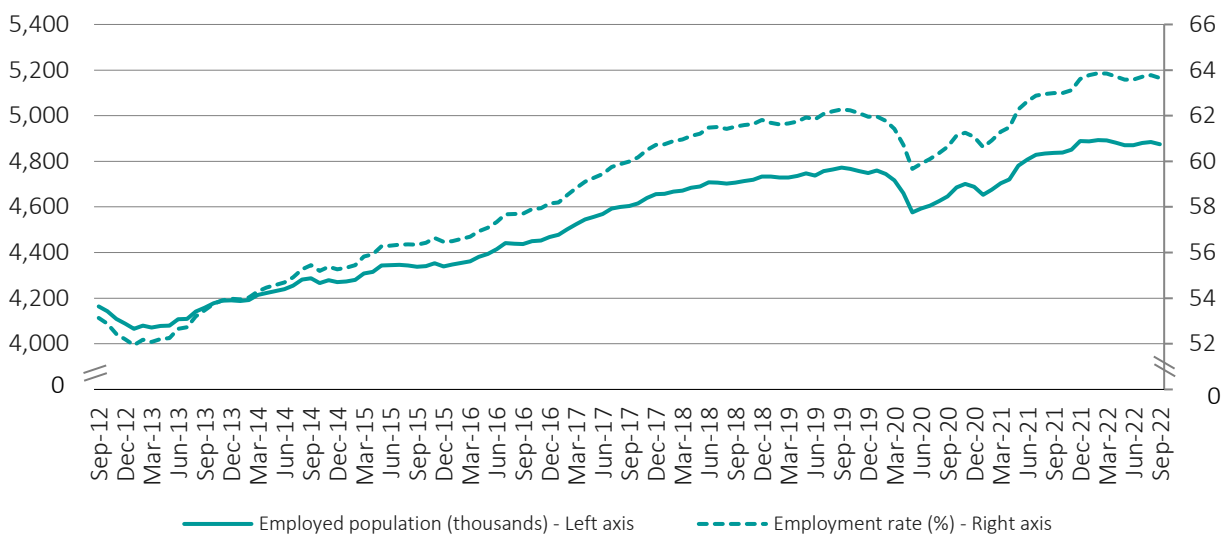
The following figures show the evolution in the last 10 years of the main indicators analysed in this Press Release. In August 2022, the active population reached its highest value since February 1998 (5,197.7 thousand). In the other hand, the employment rate reached its peak (63.9%) in February 2022 and has remained stable and near that value in recent months (63.8% in August 2022).

**Figure 3. Active population and activity rate**  
(seasonally adjusted data)



**Note:** The September 2022 estimates are provisional.

**Figure 4. Employed population and employment rate**  
(seasonally adjusted data)

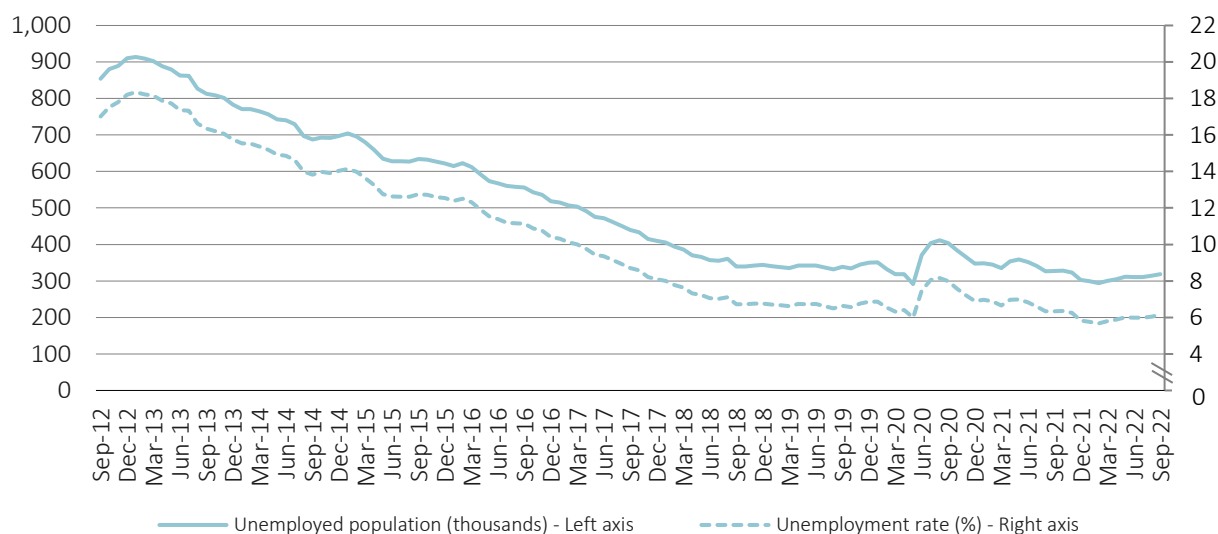


**Note:** The September 2022 estimates are provisional.



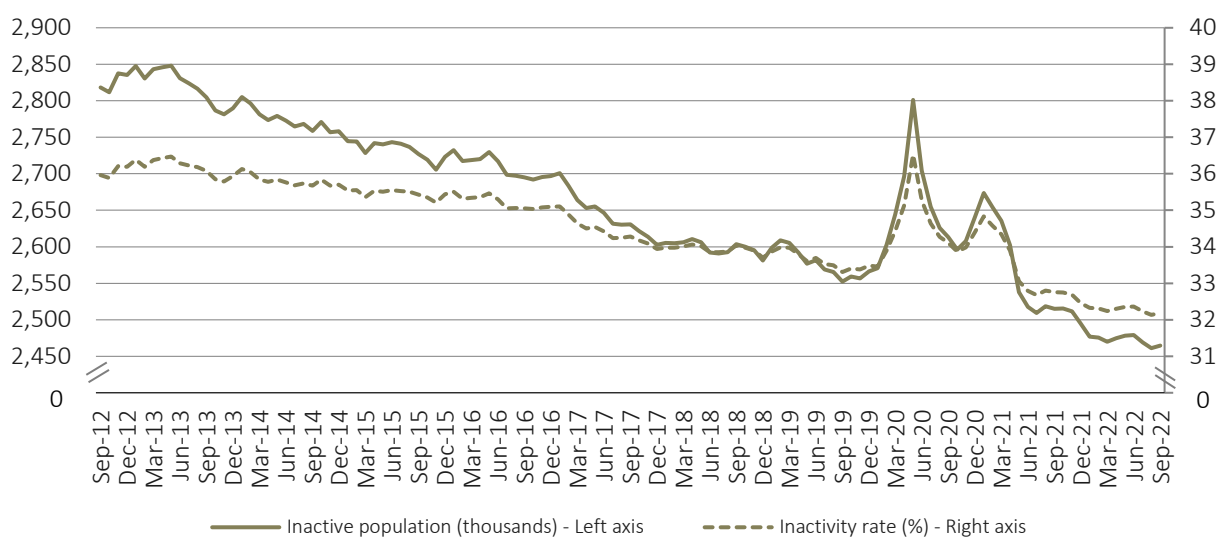
In September 2022, the unemployment rate stood at 6.1%, the highest value since December 2021. On the other hand, the inactive population has recorded, in August 2022, its lowest value since February 1998 (2,461.0 thousand people).

**Figure 5. Unemployed population and unemployment rate**  
(seasonally adjusted data)



**Note:** The September 2022 estimates are provisional.

**Figure 6. Inactive population and inactivity rate**  
(seasonally adjusted data)

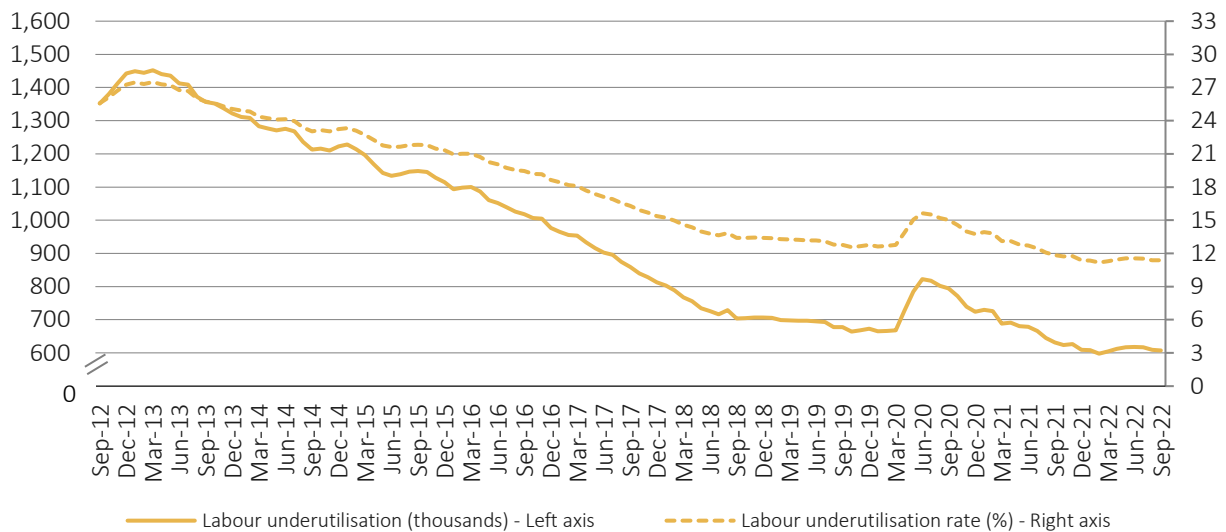


**Note:** The September 2022 estimates are provisional.



The labour underutilisation remains relatively stable, reaching in February 2022 its lowest value (598.1 thousand) of the past 10 years. This was reflected in the underutilisation rate, which registered its lowest value also in that month (11.2%); in August and in September of 2022 it stood at 11.4%.

**Figure 7. Labour underutilisation and labour underutilisation rate**  
(seasonally adjusted data)



**Note:** The September 2022 estimates are provisional.



## Criteria used when classifying the population aged 16 to 74 by labour status

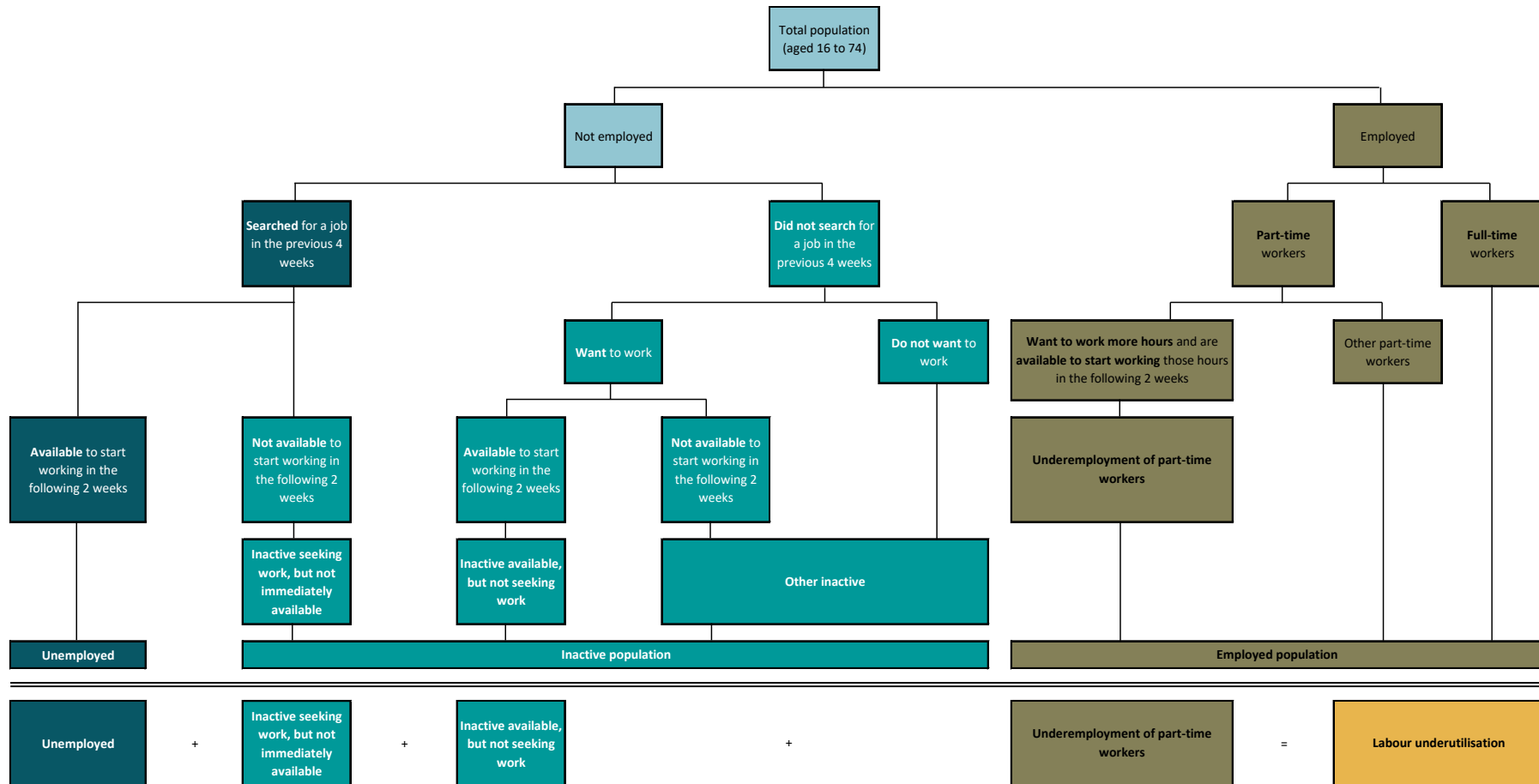






Table 1: Active population and active rate by sex and age group (16 to 74)

	Seasonally adjusted data					Not seasonally adjusted data				
	Sep 2021	Jun 2022	Jul 2022	Aug 2022	Sep 2022 (p)	Sep 2021	Jun 2022	Jul 2022	Aug 2022	Sep 2022 (p)
	Thousands									
<b>Active population</b>	<b>5,164.2</b>	<b>5,181.0</b>	<b>5,191.4</b>	<b>5,197.7</b>	<b>5,193.5</b>	<b>5,173.2</b>	<b>5,179.4</b>	<b>5,194.1</b>	<b>5,204.6</b>	<b>5,204.5</b>
Men	2,588.7	2,580.3	2,582.7	2,599.1	2,593.3	2,594.5	2,579.4	2,584.8	2,603.6	2,601.0
Women	2,575.5	2,600.7	2,608.6	2,598.6	2,600.1	2,578.7	2,600.0	2,609.3	2,601.0	2,603.6
Youth (aged 16 to 24)	318.8	322.3	329.7	339.1	349.5	329.2	317.1	332.7	350.0	361.9
Adults (aged 25 to 74)	4,845.4	4,858.7	4,861.7	4,858.6	4,843.9	4,844.0	4,862.3	4,861.3	4,854.6	4,842.6
	%									
<b>Activity rate</b>	<b>67.2</b>	<b>67.6</b>	<b>67.8</b>	<b>67.9</b>	<b>67.8</b>	<b>67.4</b>	<b>67.6</b>	<b>67.8</b>	<b>68.0</b>	<b>68.0</b>
Men	70.6	70.7	70.7	71.2	71.1	70.7	70.7	70.8	71.3	71.3
Women	64.2	64.9	65.1	64.8	64.9	64.3	64.8	65.1	64.9	65.0
Youth (aged 16 to 24)	32.1	32.7	33.5	34.5	35.6	33.2	32.2	33.8	35.6	36.8
Adults (aged 25 to 74)	72.5	72.8	72.8	72.8	72.6	72.4	72.8	72.8	72.7	72.5

Source: Statistics Portugal, Labour Force Survey.

Note: (p) – Provisional estimates.

Table 2: Employed population and employment rate by sex and age group (16 to 74)

	Seasonally adjusted data					Not seasonally adjusted data				
	Sep 2021	Jun 2022	Jul 2022	Aug 2022	Sep 2022 (p)	Sep 2021	Jun 2022	Jul 2022	Aug 2022	Sep 2022 (p)
	Thousands									
<b>Employed population</b>	<b>4,837.1</b>	<b>4,870.5</b>	<b>4,880.6</b>	<b>4,884.0</b>	<b>4,874.7</b>	<b>4,844.6</b>	<b>4,890.7</b>	<b>4,904.1</b>	<b>4,898.8</b>	<b>4,884.1</b>
Men	2,428.9	2,430.9	2,438.2	2,456.1	2,448.6	2,437.7	2,440.2	2,452.6	2,467.9	2,459.0
Women	2,408.1	2,439.6	2,442.4	2,427.9	2,426.1	2,406.9	2,450.5	2,451.5	2,430.9	2,425.1
Youth (aged 16 to 24)	246.4	261.1	271.4	275.9	287.0	251.3	262.8	278.9	284.2	293.8
Adults (aged 25 to 74)	4,590.7	4,609.4	4,609.2	4,608.1	4,587.7	4,593.3	4,627.9	4,625.3	4,614.5	4,590.3
	%									
<b>Employment rate</b>	<b>63.0</b>	<b>63.6</b>	<b>63.7</b>	<b>63.8</b>	<b>63.7</b>	<b>63.1</b>	<b>63.8</b>	<b>64.0</b>	<b>64.0</b>	<b>63.8</b>
Men	66.2	66.6	66.8	67.3	67.1	66.5	66.8	67.2	67.6	67.4
Women	60.0	60.8	60.9	60.6	60.5	60.0	61.1	61.1	60.6	60.5
Youth (aged 16 to 24)	24.8	26.5	27.6	28.1	29.2	25.3	26.7	28.3	28.9	29.9
Adults (aged 25 to 74)	68.7	69.1	69.0	69.0	68.7	68.7	69.3	69.3	69.1	68.8

Source: Statistics Portugal, Labour Force Survey.

Note: (p) – Provisional estimates.



Table 3: Unemployed population and unemployment rate by sex and age group (16 to 74)

	Seasonally adjusted data					Not seasonally adjusted data				
	Sep 2021	Jun 2022	Jul 2022	Aug 2022	Sep 2022 (p)	Sep 2021	Jun 2022	Jul 2022	Aug 2022	Sep 2022 (p)
	Thousands									
<b>Unemployed population</b>	<b>327.1</b>	<b>310.5</b>	<b>310.7</b>	<b>313.7</b>	<b>318.8</b>	<b>328.6</b>	<b>288.7</b>	<b>290.0</b>	<b>305.8</b>	<b>320.4</b>
Men	159.7	149.4	144.5	143.0	144.7	156.8	139.2	132.2	135.7	141.9
Women	167.4	161.1	166.2	170.7	174.1	171.8	149.5	157.8	170.1	178.4
Youth (aged 16 to 24)	72.4	61.2	58.3	63.2	62.5	77.9	54.3	53.9	65.7	68.1
Adults (aged 25 to 74)	254.7	249.3	252.4	250.5	256.2	250.7	234.4	236.1	240.1	252.3
	%									
<b>Unemployment rate</b>	<b>6.3</b>	<b>6.0</b>	<b>6.0</b>	<b>6.0</b>	<b>6.1</b>	<b>6.4</b>	<b>5.6</b>	<b>5.6</b>	<b>5.9</b>	<b>6.2</b>
Men	6.2	5.8	5.6	5.5	5.6	6.0	5.4	5.1	5.2	5.5
Women	6.5	6.2	6.4	6.6	6.7	6.7	5.8	6.0	6.5	6.9
Youth (aged 16 to 24)	22.7	19.0	17.7	18.7	17.9	23.7	17.1	16.2	18.8	18.8
Adults (aged 25 to 74)	5.3	5.1	5.2	5.2	5.3	5.2	4.8	4.9	4.9	5.2

Source: Statistics Portugal, Labour Force Survey.

Note: (p) – Provisional estimates.

Table 4: Inactive population and inactivity rate by sex and age group (16 to 74)

	Seasonally adjusted data					Not seasonally adjusted data				
	Sep 2021	Jun 2022	Jul 2022	Aug 2022	Sep 2022 (p)	Sep 2021	Jun 2022	Jul 2022	Aug 2022	Sep 2022 (p)
	Thousands									
<b>Inactive population</b>	<b>2,515.2</b>	<b>2,479.0</b>	<b>2,469.1</b>	<b>2,461.0</b>	<b>2,464.4</b>	<b>2,506.2</b>	<b>2,480.7</b>	<b>2,466.4</b>	<b>2,454.1</b>	<b>2,453.4</b>
Men	1,079.3	1,070.3	1,068.3	1,051.3	1,056.6	1,073.5	1,071.2	1,066.3	1,046.9	1,049.0
Women	1,435.9	1,408.8	1,400.8	1,409.7	1,407.8	1,432.7	1,409.4	1,400.2	1,407.2	1,404.4
Youth (aged 16 to 24)	673.9	662.8	654.9	644.4	633.1	663.5	668.0	651.8	633.5	620.7
Adults (aged 25 to 74)	1,841.2	1,816.3	1,814.3	1,816.7	1,831.4	1,842.6	1,812.7	1,814.6	1,820.6	1,832.7
	%									
<b>Inactivity rate</b>	<b>32.8</b>	<b>32.4</b>	<b>32.2</b>	<b>32.1</b>	<b>32.2</b>	<b>32.6</b>	<b>32.4</b>	<b>32.2</b>	<b>32.0</b>	<b>32.0</b>
Men	29.4	29.3	29.3	28.8	28.9	29.3	29.3	29.2	28.7	28.7
Women	35.8	35.1	34.9	35.2	35.1	35.7	35.2	34.9	35.1	35.0
Youth (aged 16 to 24)	67.9	67.3	66.5	65.5	64.4	66.8	67.8	66.2	64.4	63.2
Adults (aged 25 to 74)	27.5	27.2	27.2	27.2	27.4	27.6	27.2	27.2	27.3	27.5

Source: Statistics Portugal, Labour Force Survey.

Note: (p) – Provisional estimates.



Table 5: Labour underutilisation and labour underutilisation rate (16 to 74)

	Seasonally adjusted data					Not seasonally adjusted data				
	Sep 2021	Jun 2022	Jul 2022	Aug 2022	Sep 2022 (p)	Sep 2021	Jun 2022	Jul 2022	Aug 2022	Sep 2022 (p)
	Thousands									
<b>Labour underutilisation</b>	<b>631.8</b>	<b>618.2</b>	<b>617.2</b>	<b>609.1</b>	<b>607.6</b>	<b>634.5</b>	<b>596.1</b>	<b>599.6</b>	<b>603.1</b>	<b>608.0</b>
Unemployed population	327.1	310.5	310.7	313.7	318.8	328.6	288.7	290.0	305.8	320.4
Underemployed part-time workers	139.5	141.0	139.9	137.7	137.6	136.2	142.5	140.1	135.2	132.5
Persons seeking work but not immediately available	18.0	37.1	39.9	34.4	29.8	18.0	37.1	39.9	34.4	29.8
Persons available to work but not seeking	147.2	129.6	126.7	123.3	121.5	151.7	127.9	129.7	127.7	125.3
	%									
<b>Labour underutilisation rate</b>	<b>11.9</b>	<b>11.6</b>	<b>11.5</b>	<b>11.4</b>	<b>11.4</b>	<b>11.9</b>	<b>11.2</b>	<b>11.2</b>	<b>11.2</b>	<b>11.3</b>

Source: Statistics Portugal, Labour Force Survey.

Note: (p) – Provisional estimates.



## METHODOLOGICAL NOTE

### LABOUR FORCE SURVEY

The main purpose of the Labour Force Survey is to characterise the population in terms of the labour market. It is a quarterly sample survey, addressed to families occupying the same dwelling in the national territory, which makes available quarterly and annual data.

Most of the characteristics observed in this survey report to the situation in one pre-defined week (from Monday to Sunday), known as reference week. The reference weeks are uniformly distributed throughout the quarters and years. The interviews usually take place in the week following the reference week.

The information is obtained directly, through computer-assisted interview by using a mixed data collection mode: the initial interview is done face-to-face by an interviewer visiting the household and the other five interviews are done by telephone if certain requirements are met. It should be noticed that, following the COVID-19 pandemic and the measures adopted by the competent authorities, Statistics Portugal has decided, between the first fortnight of March 2020 and the end of the collection of the 2<sup>nd</sup> quarter of 2022, to suspend the face-to-face collection mode, replacing it exclusively with the telephone interview one.

Published data were calibrated by using the population estimates calculated from the final results of Census 2011.

### MONTHLY EMPLOYMENT AND UNEMPLOYMENT ESTIMATES

In 2014, Statistics Portugal initiated a monthly release of Labour Force Survey estimates for the main labour market indicators in addition to the usual quarterly estimates' releases.

With this initiative, Statistics Portugal intends to provide to users monthly updated information on labour market recent developments, allowing, at the same time, a more complete reading picture than that provided so far by Eurostat in its monthly releases of the unemployed population and unemployment rate estimates for Portugal. With this dissemination, Statistics Portugal also satisfies a specific requirement from the PEEIs (Principal European Economic Indicators).

Taking advantage of the continuous nature of the Labour Force Survey collection process, it is possible to monthly obtain estimates related to successive sets of three months (moving quarters), assuring consistency with the quarterly released estimates.

The monthly estimates refer to centred moving quarters, where the reference month (m) corresponds to the central month of each moving quarter. In fact, the reference month of each Press Release corresponds to the central month of the quarter composed by m-1, m and m+1 months. Therefore, the monthly changes are calculated on values that contain common months. Therefore, the comparison of moving quarters without common months should be done in relation to reference months three months earlier.



The option for disseminating centred moving quarters series aimed at avoiding delays in the detection of turning points in the economic cycle that arise from the use of simple moving averages, but it implies that the estimates for the latest released moving quarter are provisional (see “Revisions” section below).

As estimates of centred moving quarters, the values (not seasonally adjusted) of the reference months February, May, August and November of each year correspond to the estimates of the 1st, 2nd, 3rd and 4th natural quarters, respectively, whose results are published and analysed with greater detail in the quarterly releases of the Labour Force Survey estimates.

The estimates for the last reference month are always provisional, as they correspond to a moving quarter where for the third month the data collection is not completed yet. In fact, for the first two months ( $m-1$  and  $m$ ) the data collection from the Labour Force Survey is already completed, while for the third month ( $m+1$ ) only partially collected data are available.

In this context, in each monthly Press Release the provisional estimates for the reference month and the revised estimates for the previous months are published, due the availability of complete information for the last moving quarter.

## INFORMATION AVAILABLE

The data series selected for monthly releases refer to both employed and unemployed population, by sex and age group, and to the corresponding rates. In relation to these data series, it should be noted the following:

- Unless otherwise stated, the data series analysed in this Press Release are seasonally adjusted. For this reason, the analysis focuses on the comparison with the most recent periods. As agreed, Eurostat started using these estimates in its unemployment monthly releases. The original data series (not seasonally adjusted; as in the Statistics Portugal quarterly releases), are available in Tables of the annex.
- The indicators analysed in this Press Release were calculated for the age subgroup of those aged 16 to 74 (as in the Eurostat News Release), which differs from the criterion adopted at the Statistics Portugal quarterly releases (people aged 16 to 89, in line with the concepts in force of the International Labour Organization).

The back series for all the released and analysed indicators in this Press Release, since February 1998 (quarter from January to March 1998), are available at the Statistics Portugal website and the links to them can be found in the Excel file released together with this Press Release.

Due to rounding, totals may not correspond exactly to the sum of the parts.

## REVISIONS

The monthly released data are subject to regular revisions, as previously mentioned. The revisions come from obtaining the final estimates for the previous reference month (moving quarter) due to the conclusion of its last month collection process. Therefore, in each Press Release the not seasonally adjusted final estimates for the previous reference month are published. In addition, are also presented the final estimates resulting from updating of the seasonally adjusted data series whenever a new observation is added.



## Revision of August 2022 estimates (16 to 74) - main indicators -

	Unit	Seasonally adjusted data	Not seasonally adjusted data
Active population		0.8	0.2
Employed population		- 0.4	- 1.0
Unemployed population	Thousands	1.2	1.3
Inactive population		- 0.8	- 0.2
Labour underutilisation		- 3.5	- 4.8
Employment rate		0.0	0.0
Unemployment rate		0.0	0.0
Men's unemployment rate		0.2	0.1
Women's unemployment rate	pp	- 0.1	- 0.1
Youth unemployment rate (16 to 24)		2.0	2.2
Adults' unemployment rate (25 to 74)		- 0.1	- 0.2
Labour underutilisation rate		0.0	- 0.1

### SOME CONCEPTS

**Unemployed:** person aged 16 and 74 who during the reference period met simultaneously the following conditions:

- neither had a job nor was at work;
- had actively sought work, i.e., had actively searched for a paid or unpaid job during the specified period (reference period or the three previous weeks); and
- was available for a paid or unpaid job.

**Employed:** person aged 16 to 89 who, during the reference period, was in one of the following situations:

- worked for at least one hour for a wage or salary, in cash or in kind (including unpaid family work);
- had a formal attachment to his/her job but was not at work temporarily;
- was in early retirement but working in the reference week.

**Working age resident population:** Resident population aged 16 to 89.

**Active:** person aged 16 to 89 who, during the reference period, furnish the supply of labour force for the production of economic goods and services (was employed or unemployed).

**Labour force:** population formed by all active persons.

**Extended labour force:** corresponds to the labour force enlarged by the inactive seeking work but not immediately available and the inactive available but not seeking work.





**Labour underutilisation:** indicator that aggregates the unemployed population, the underemployment of part-time workers, the inactive seeking work but not immediately available, and the inactive available but not seeking work.

**Unemployment rate:** rate that defines the relation between the unemployed population and the labour force.

$$\text{U.R. (\%)} = (\text{Unemployed population} / \text{Labour force}) \times 100$$

**Employment rate:** rate that defines the relation between the employed population and the working age population.

$$\text{E.R. (\%)} = (\text{Employed population} / \text{Working age population}) \times 100$$

**Activity rate of the working age population:** rate that defines the relation between the labour force and the working age population.

$$\text{A.R. (\%)} = (\text{Labour force} / \text{Working age population}) \times 100$$

**Inactivity rate of the working age population:** rate that defines the relation between the working age inactive population and the working age population.

$$\text{I.R. (\%)} = (\text{Working age inactive population} / \text{Working age population}) \times 100$$

**Labour underutilisation rate:** rate that defines the relation between the labour underutilisation and the extended labour force.

$$\text{L.U.R. (\%)} = (\text{Labour underutilisation} / \text{Extended labour force}) \times 100$$

For the indicators selected for monthly dissemination, it was considered the age subgroup of those aged 16 to 74.

Para For a more detailed definition of the concepts and methodological features of this statistical operation, consult the [Labour Force Survey](#) or the [Monthly Employment and Unemployment Estimates](#) methodological documents (both only in Portuguese) available at the Statistics Portugal website.

---

#### Next Press Release

30 November 2022: “Monthly Employment and Unemployment Statistics – October 2022”.

1 December 2022: Eurostat News Release.

---