



INSTITUTO NACIONAL DE ESTATÍSTICA  
STATISTICS PORTUGAL

press release



17 October 2022  
TRANSPORT ACTIVITIES  
Air Transport Flash Statistics  
August 2022

## AIR PASSENGER TRANSPORT HAS NOT YET SURPASSED 2019 LEVELS

In **August 2022**, 6.3 million passengers and 19.1 thousand tonnes of freight and mail were handled at national airports, corresponding to year-on-year variations of +63.1% and +18.6%, respectively (+122.5% and +20.0% in July, in the same order). Compared to August 2019, the movement of passengers decreased by 1.9% and the movement of freight and mail increased by 12.5% (-1.5% and +7.6% in the previous month, respectively).

In August 2022, there was a daily average of 99.4 thousand passengers disembarked at national airports (104.3 thousand in the previous month), approaching that recorded in August 2019 (101.3 thousand).

Between **January and August 2022**, the number of passengers handled increased by 203.3% vis-à-vis the same period of 2021 (-9.3% compared to the same period of 2019). The United Kingdom was the main country of origin and destinations of flights, with growths of 416.4% in the number of disembarked passengers and 450.8% in the number of embarked passengers.

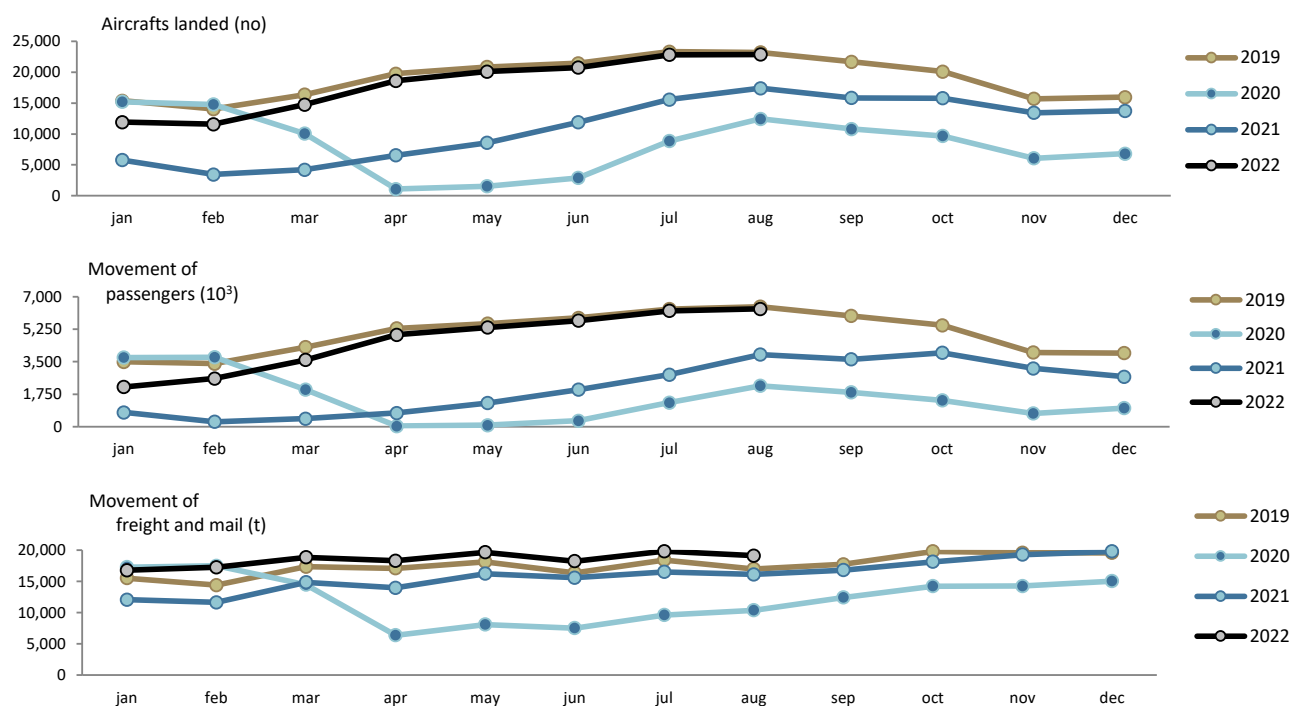
---

### Monthly traffic at national airports

In **August 2022**, 22.9 thousand commercial aircrafts landed at national airports, corresponding to 6.3 million passengers (embarked, disembarked and direct transits) and 19.1 thousand tonnes of freight and mail were handled (+31.5%, +63.1% and +18.6%, respectively, compared to August 2021). In July 2022, there had been variations of +46.6%, +122.5% and +20.0%, in the same order.

Compared to August 2019, there were variations of -1.4% in the number of aircrafts landed, -1.9% in the movement of passengers and +12.5% in the movement of freight and mail (-2.1%, -1.5% and +7.6% in the previous month, respectively).

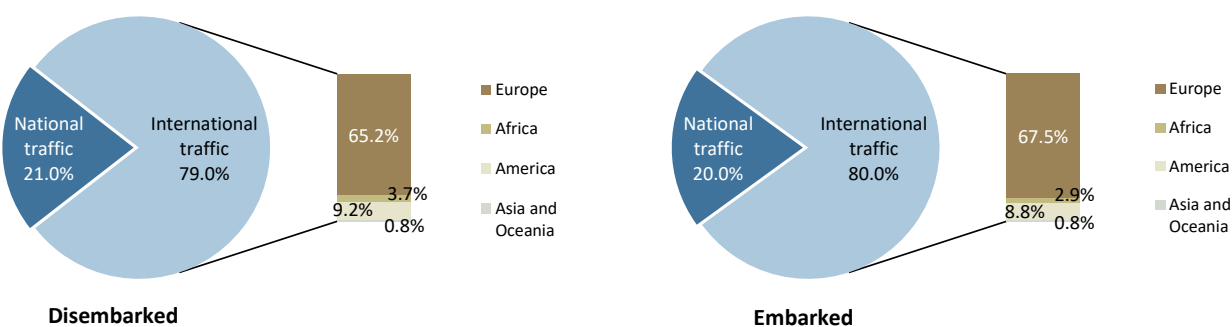
Figure 1. Aircrafts landed, passengers and freight/mail movement at national airports



Source: Survey to airports and aerodromes (ANA/ANAC/Statistics Portugal)

Considering the total number of passengers disembarked in August 2022, 79.0% corresponded to international traffic (74.4% in the same month of 2021), the majority coming from the European continent (65.2% of the total). Regarding embarked passengers, 80.0% corresponded to international traffic (75.6% in August 2021), with the main destination being airports at the European continent (67.5% of the total).

Figure 2. Proportion of passengers disembarked and embarked at national airports by nature of traffic – August 2022



Source: Survey to airports and aerodromes (ANA/ANAC/Statistics Portugal)



INSTITUTO NACIONAL DE ESTATÍSTICA  
STATISTICS PORTUGAL

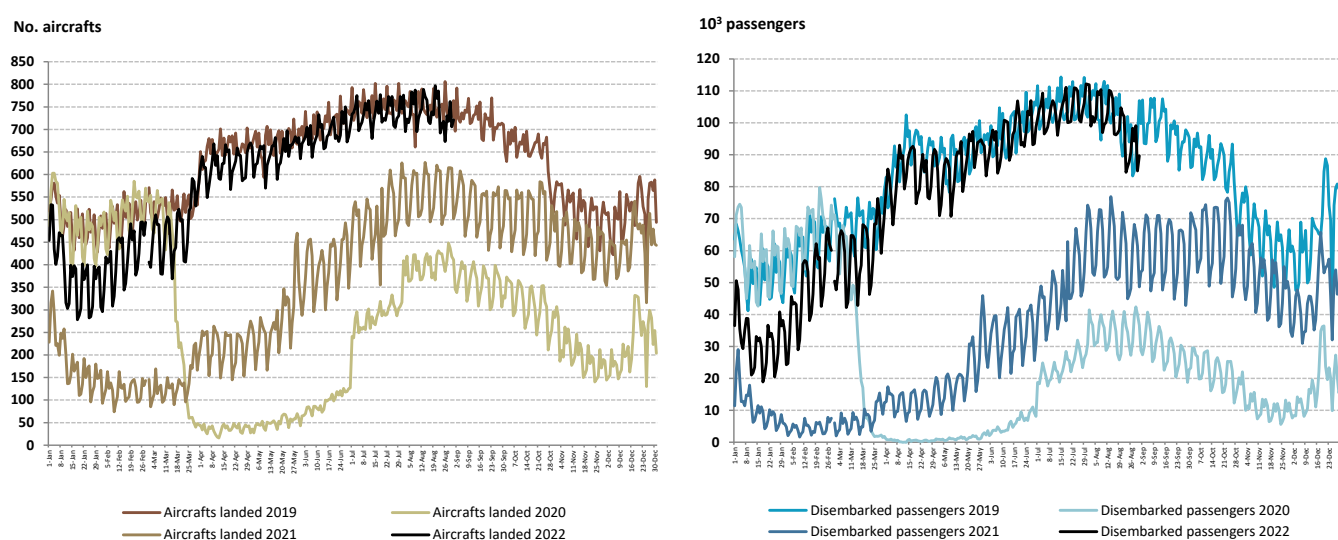
press release



The daily movement of aircrafts and passengers is typically heavily influenced by seasonal and weekly cycle fluctuations but was significantly affected by the impact of the pandemic in 2020 and 2021, as shown in the figure below.

The year 2022 revealed a trend towards approaching the levels recorded in the pre-pandemic period. In August 2022, there was a daily average of 99.4 thousand passengers disembarked at national airports (104.3 thousand in the previous month), approaching that recorded in August 2019 (101.3 thousand).

Figure 3. Aircrafts landed and disembarked passengers at national airports – daily



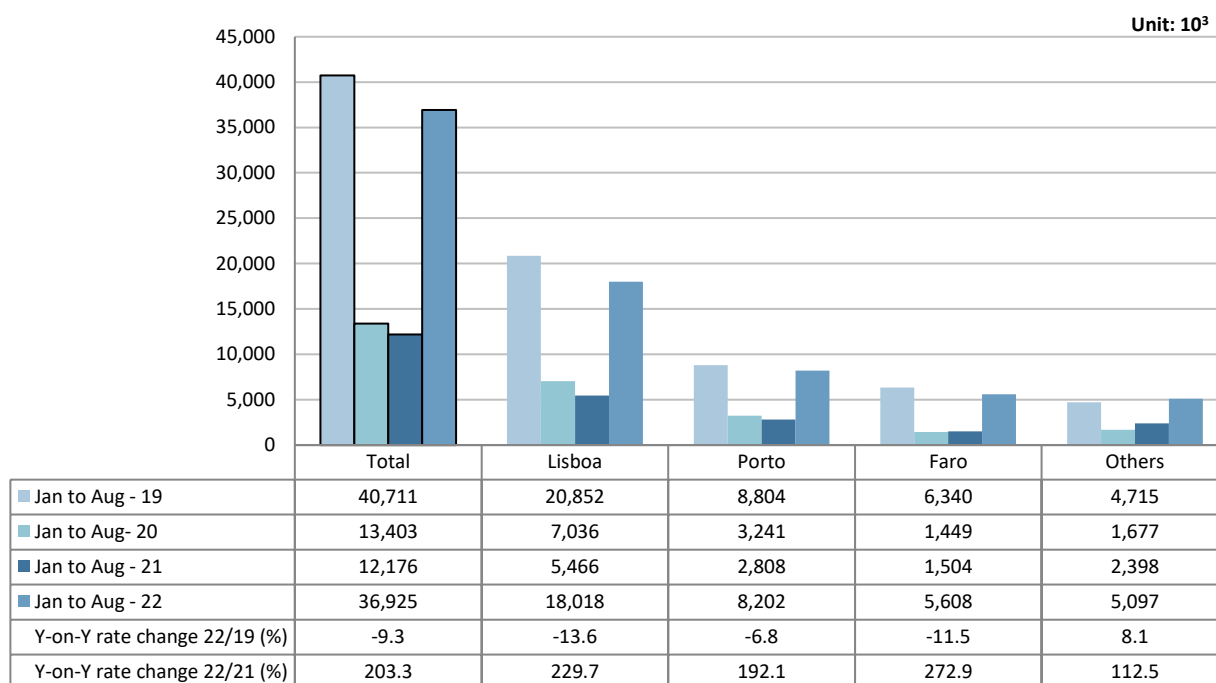
Source: Survey to airports and aerodromes (ANA/ANAC/Statistics Portugal)

### Accumulated traffic at national airports

Between **January and August 2022**, the number of passengers handled at national airports increased by 203.3% vis-à-vis the same period of 2021 (-9.3% compared to the same period of 2019). The movement of passengers in Lisboa airport corresponded to 48.8% of total handled passengers (18.0 million) and increased by 229.7% vis-à-vis the same period of 2021 (-13.6% compared with the same period of 2019). Considering the three airports with the highest annual passenger traffic, Faro recorded the major increase compared to 2021 (+272.9%) and Porto recorded the closest approach to 2019 levels (-6.8%).



Figure 4. Movement of passengers at national airports



Source: Survey to airports and aerodromes (ANA/ANAC/Statistics Portugal)

Considering the volume of passengers disembarked and embarked on international flights between January and August 2022, the United Kingdom was the main country of origin and destination of flights, with year-on-year growths of 416.4% in the number of disembarked passengers and 450.8% in the number of embarked passengers, compared to 2021, justified by the closure of the air corridor between Portugal and the United Kingdom for most of the period under review of 2021. France occupied the second position and registered increases of 143.6% in the number of disembarked passengers and 150.9% in the number of embarked passengers, compared to the same period of 2021. Spain took the 3<sup>rd</sup> position, as the main country of origin and destination.

Table 1. Main countries of origin and destination of flights with passengers at national airports

| Ranking | Country of origin<br>(of the flight) | Jan to Aug 2022                           |                        |
|---------|--------------------------------------|---|------------------------|
|         |                                      | Passengers disembarked (10 <sup>3</sup> ) | Y-on-Y growth rate (%) |
| 1       | United Kingdom                       | 2,733.3                                   | 416.4                  |
| 2       | France                               | 2,395.8                                   | 143.6                  |
| 3       | Spain                                | 1,698.5                                   | ...                    |
| 4       | Germany                              | 1,479.6                                   | 247.0                  |
| 5       | Switzerland                          | 788.1                                     | ...                    |

... Confidential data / value not disclosed in 2021

| Ranking | Country of destination<br>(of the flight) | Jan to Aug 2022                        |                        |
|---------|---|--|------------------------|
|         |   | Passengers embarked (10 <sup>3</sup> ) | Y-on-Y growth rate (%) |
| 1       | United Kingdom                            | 2,656.3                                | 450.8                  |
| 2       | France                                    | 2,349.5                                | 150.9                  |
| 3       | Spain                                     | 1,666.5                                | ...                    |
| 4       | Germany                                   | 1,469.2                                | 270.2                  |
| 5       | Switzerland                               | 791.2                                  | ...                    |



INSTITUTO NACIONAL DE ESTATÍSTICA  
STATISTICS PORTUGAL

press release

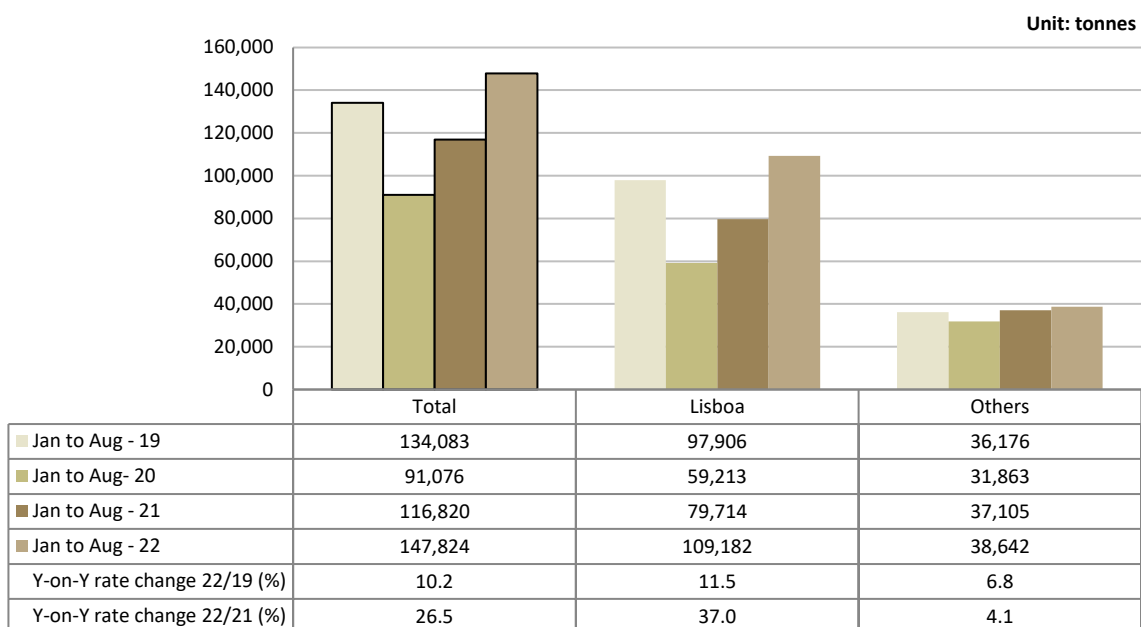


Source: Survey to airports and aerodromes (ANA/ANAC/Statistics Portugal)

Between January and August 2022, the movement of freight and mail at Lisboa airport represented 73.9% of the total, corresponding to 109.2 thousand tonnes (+37.0% vis-à-vis the same period of 2021). Compared to the same period of 2019, there was an increase of 11.5%.

Considering the group of other airports, the movement of freight and mail increased by 4.1% (+6.8% compared to the same period of 2019).

Figure 5. Freight and mail movement at national airports



Source: Survey to airports and aerodromes (ANA/ANAC/Statistics Portugal)



INSTITUTO NACIONAL DE ESTATÍSTICA  
STATISTICS PORTUGAL

press release



## METHODOLOGICAL NOTES

In this Press Release the following statistical data are used:

2022: preliminary results;

2021: provisional results;

2019 and 2020: definitive results.

**Main national airports** (considered in this Press Release as national airports): Lisboa, Porto, Faro, Ponta Delgada, Funchal, Porto Santo, Beja, Horta, Flores, Santa Maria, Terceira (Lajes), Pico, Graciosa, São Jorge, Corvo, Portimão, Bragança, Cascais, Vila Real and Viseu.

**SOURCES:** Survey to airports and aerodromes (ANA/ANAC/Statistics Portugal)

## MAIN CONCEPTS:

**Commercial aviation** - Air transport flight performed for the public transport of passengers, freight or mail, for remuneration and for hire.

**Commercial air traffic** - Movement of aircrafts, passengers, freight and mail in commercial aviation.

## Monthly indicators at Statistics Portugal portal:

[Aircrafts landed \(No.\) in airports by Geographic localization, Type of traffic and Nature of traffic; Monthly](#)

[Aircrafts landed \(No.\) in airports by Continent of origin; Monthly](#)

[Aircrafts unglued \(No.\) in airports by Geographic localization, Type of traffic and Nature of traffic; Monthly](#)

[Disembarked passengers \(No.\) in airports by Geographic localization, Type of traffic and Nature of traffic; Monthly](#)

[Disembarked passengers \(No.\) in Airports by Continent of origin; Monthly](#)

[Embarked passengers \(No.\) in airports by Geographic localization, Type of traffic and Nature of traffic; Monthly](#)

[Embarked passengers \(No.\) in airports by Destination continent; Monthly](#)

[Passengers in direct transit \(No.\) in airports by Geographic localization, Type of traffic and Nature of traffic; Monthly](#)

[Disembarked load \(t\) in airports by Geographic localization, Type of traffic and Nature of traffic; Monthly](#)

[Embarked load \(t\) in airports by Geographic localization, Type of traffic and Nature of traffic; Monthly](#)

[Disembarked mail \(t\) in airports by Geographic localization, Type of traffic and Nature of traffic; Monthly](#)

[Embarked mail \(t\) in airports by Geographic localization, Type of traffic and Nature of traffic; Monthly](#)





INSTITUTO NACIONAL DE ESTATÍSTICA  
STATISTICS PORTUGAL

press release



#### ACRONYMS AND DESIGNATIONS

|      |                                   |
|------|-----------------------------------|
| ANA  | Portugal Airports, S.A.           |
| ANAC | National Civil Aviation Authority |
| INE  | Statistics Portugal               |

---

**Next Press Release (monthly)** - Air Transport Flash Statistics – November 16, 2022

**Next Press Release (quarterly)** - Transport activities (3<sup>rd</sup> Q 2022) - December 6, 2022

---