



12 October 2022

INDICES OF PRODUCTION, EMPLOYMENT AND WAGES IN CONSTRUCTION

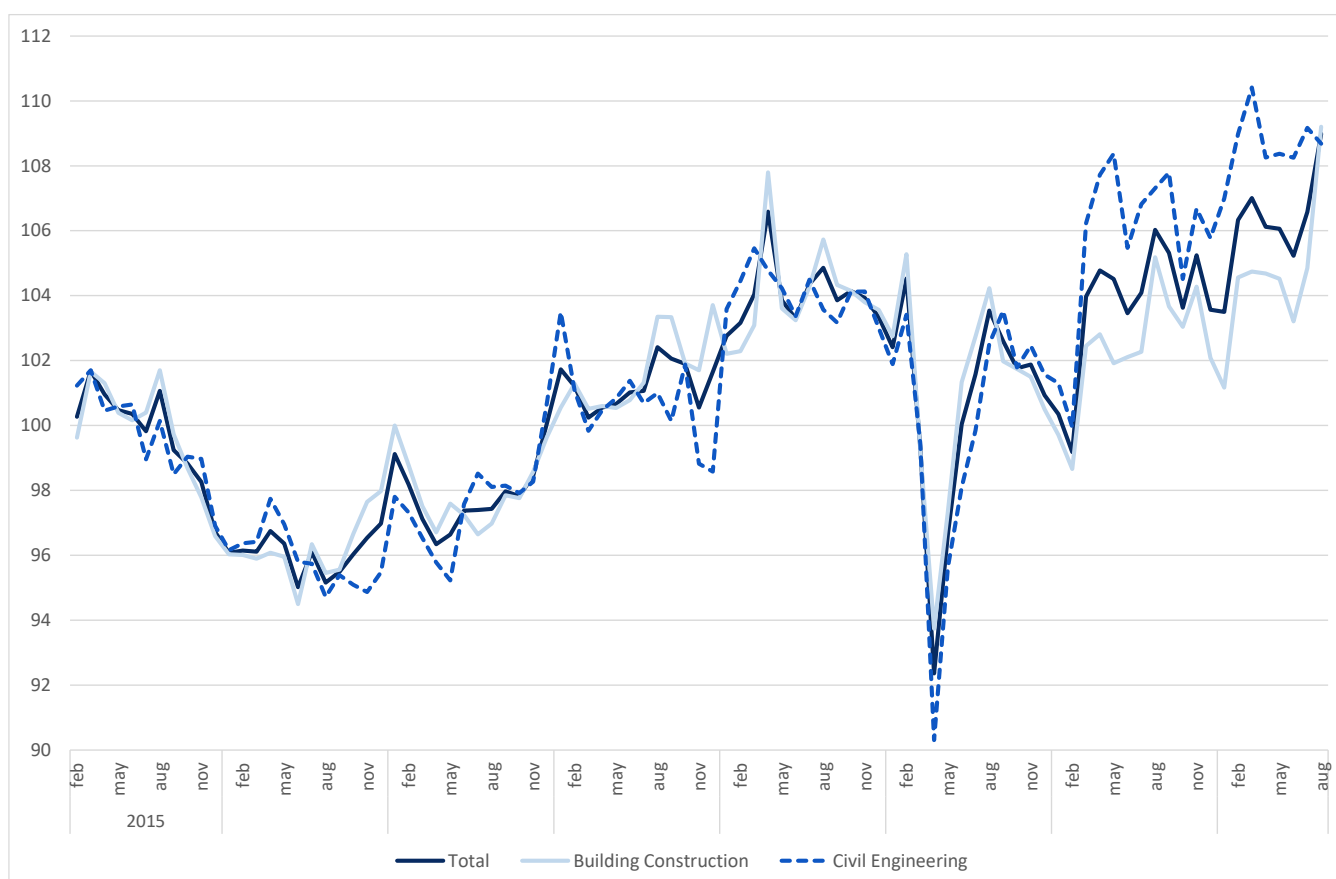
August 2022

## CONSTRUCTION PRODUCTION GREW 2.3%

The index of production in construction increased 2.3% in August, grew to 0.4 percentage points from July, in year-on-year terms (3 months moving average, working days and seasonally adjusted).

Employment and wages and salaries grew 1.1% and 5.4% (1.4% and 6.3% in the previous month), respectively.

Figure 1. Indices of Production in Construction (2015=100)



Next press release – November 11<sup>th</sup> 2022