



IN JULY, THE UNEMPLOYMENT RATE STOOD AT 5.9% AND THE LABOUR UNDERUTILISATION RATE AT 11.5%

June 2022:

- The active population (5,189.5 thousand) increased by 0.1% from May 2022 and by 0.4% from June 2021, having a near null relative change from March 2022.
- The employed population (4,879.8 thousand) increased from the previous month (0.1%) and from one year before (1.3%) and decreased from three months before (0.2%).
- The unemployed population (309.7 thousand) decreased by 0.4% from May, increased by 3.2% from March and decreased by 11.9% from June 2021.
- The unemployment rate stood at 6.0%, remained unchanged from the previous month, up 0.2 percentage points (pp) from three months before and down 0.8 pp from a year earlier.
- The inactive population (2,470.5 thousand) decreased by 0.2% from the previous month and from three months earlier and decreased by 1.6% from June 2021.
- The labour underutilisation rate was estimated at 11.6%, up 0.1 pp from the previous month, up 0.3 pp from three months before and down 1.1 pp from the same month of 2021.

July 2022¹:

- The active population (5,182.5 thousand) decreased by 0.1% from June, increased by 0.1% from July 2021, having a near null relative change from April 2022.
- The employed population (4,876.2 thousand) decreased from the previous month and from three months before (0.1% for both), having increased by 0.9% from a year earlier.
- The unemployed population (306.2 thousand) decreased by 1.1% from the previous month and by 10.2% from July 2021, having increased from April 2022 (0.6%).
- The unemployment rate stood at 5.9%, down 0.1 pp from the previous month, down 0.7 pp from one year before, but remained unchanged from three months before.
- The inactive population (2,478.0 thousand) increased from the previous month (0.3%) and from three months before (0.1%) and decreased from a year earlier (1.0%).
- The labour underutilisation rate stood at 11.5%, down 0.1 pp from the previous month, up 0.1 pp from three months before and down 0.9 pp from July 2021.

¹ The estimates for the last reference month (in this case, the quarter centred in July 2022: from June to August 2022) were calculated with incomplete information for the last month of the quarter (August 2022). These estimates will be revised next month (as described in the methodological note).



The table below presents the main indicators of the Monthly Employment and Unemployment Estimates.

Monthly Employment and Unemployment Estimates (16 to 74)

Main Indicators

	Unit	Seasonally adjusted data						
		Jun 2021	Jul 2021	Mar 2022	Apr 2022	May 2022	Jun 2022	Jul 2022 (p)
Active population	Thousands	5,168.4	5,175.8	5,187.4	5,184.8	5,186.0	5,189.5	5,182.5
Employed population		4,816.9	4,834.8	4,887.3	4,880.4	4,874.9	4,879.8	4,876.2
Unemployed population		351.4	341.0	300.1	304.4	311.1	309.7	306.2
Inactive population		2,509.4	2,503.6	2,474.3	2,475.8	2,474.4	2,470.5	2,478.0
Labour underutilisation		677.4	666.0	604.3	612.2	617.8	618.7	614.0
Activity rate	%	67.3	67.4	67.7	67.7	67.7	67.7	67.7
Employment rate		62.7	63.0	63.8	63.7	63.6	63.7	63.7
Unemployment rate		6.8	6.6	5.8	5.9	6.0	6.0	5.9
Inactivity rate		32.7	32.6	32.3	32.3	32.3	32.3	32.3
Labour underutilisation rate		12.7	12.4	11.3	11.4	11.5	11.6	11.5

Source: Statistics Portugal, Labour Force Survey.

Note: (p) – Provisional estimates.

In **June 2022**, from the previous month, the active population increased by 3.5 thousand people and the inactive population decreased by 3.9 thousand people². The evolution of the active population was due to the increase of the employed population (3.9 thousand; 0.1%) having compensated the decrease in the unemployed population (1.4 thousand; 0.4%). The change in the inactive population was explained, mainly, by the decrease in the number of inactive persons who have not looked for a job nor were available to work (6.2 thousand; 0.2%) and the number of inactive persons available to work but not seeking a job (3.7 thousand; 2.8%).

The active population increased from three months before (2.1 thousand; which corresponds to a null relative change) as the decrease of the employed population (7.5 thousand; 0.2%) was lower than the increase of the unemployed population (9.6 thousand; 3.2%). The inactive population decreased from this month (3.8 thousand; 0.2%) mainly due to the decrease in the number of inactive persons nor available nor seeking a job (8.9 thousand; 0.4%).

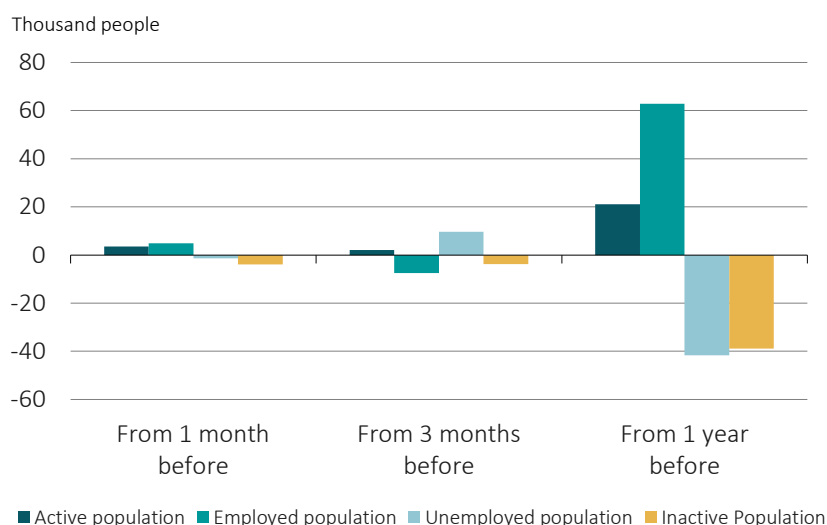
The increase of the active population (21.1 thousand; 0.4%) from June 2021 was followed by an increase of the employed population (62.9 thousand; 1.3%) that largely surpassed the decrease of the unemployed population (41.7 thousand; 11.9%). The inactive population decreased by 38.9 thousand people (1.6%) mainly due to the decrease in the number of inactive persons available to work but not seeking a job (23,4 thousand; 15,3%) and the number of inactive persons nor available nor seeking a job (21.8 thousand; 0.9%).

² The changes in the active population and in the inactive population are not necessarily symmetrical. They are also influenced by the total population change that result from the natural balance and the net migration.



These results determined the following changes in the unemployment rate – that stood at 6.0% in June 2022: the same value from the previous month, up 0.2 pp from three months before and down 0.8 pp from the same month of 2021.

Figure 1. Change in the active, employed, unemployed and inactive population in June 2022
(seasonally adjusted data)



Also in June 2022, the labour underutilisation covered 618.7 thousand people, remained almost unchanged from the previous month, increased from three months before (14.4 thousand; 2.4%), but down from one year earlier (58.7 thousand; 8.7%). The labour underutilisation rate was estimated at 11.6%, up 0.1 pp from the previous month, up 0.3 pp from three months before and down 1.1 pp from a year earlier.

In **July 2022**, the estimated active population decreased from the previous month by 7.0 thousand people (0.1%) and the estimated inactive population increased by 7.5 thousand (0.3%). The decrease of the active population resulted from the decrease of the employed population by 3.6 thousand (0.1%) and of the unemployed population by 3.5 thousand (1.1%). On the other hand, the inactive population increase was explained, essentially, by the increase in the number of inactive persons who have not looked for a job nor were available to work (8.5 thousand; 0.4%) and the number of inactive persons seeking a job but not available to work (4.3 thousand; 11.8%).

The decrease of the active population from three months before (2.3 thousand; which corresponds to null relative change) came from the decrease of the employed population (4.2 thousand; 0.1%), which overcome the increase of the unemployed population (1.8 thousand; 0.6%). The inactive population increased by 2.2 thousand (0.1%) mainly due to the increase in the number of inactive persons seeking to work but not available (13.2 thousand; 47.1%) being higher than the decrease of the number of inactive persons available to work but not seeking (11.7 thousand; 8.7%).



Finally, the active population increase (6.7 thousand; 0.1%) from July 2021 was followed by an increase of the employed population (41.4 thousand; 0.9%) that offset the decrease of the unemployed population (34.8 thousand; 10.2%). The inactive population decreased by 25.6 thousand people (1.0%) due to the decrease in the number of inactive persons available but not seeking a job (25.2 thousand; 17.0%).

These results determined the following changes in the unemployment rate which stood at 5.9%: down 0.1 pp from June, remained unchanged from April 2022 and down 0.7 pp from July 2021.

Figure 2. Change in the active, employed, unemployed and inactive population in July 2022
(Seasonally adjusted data)



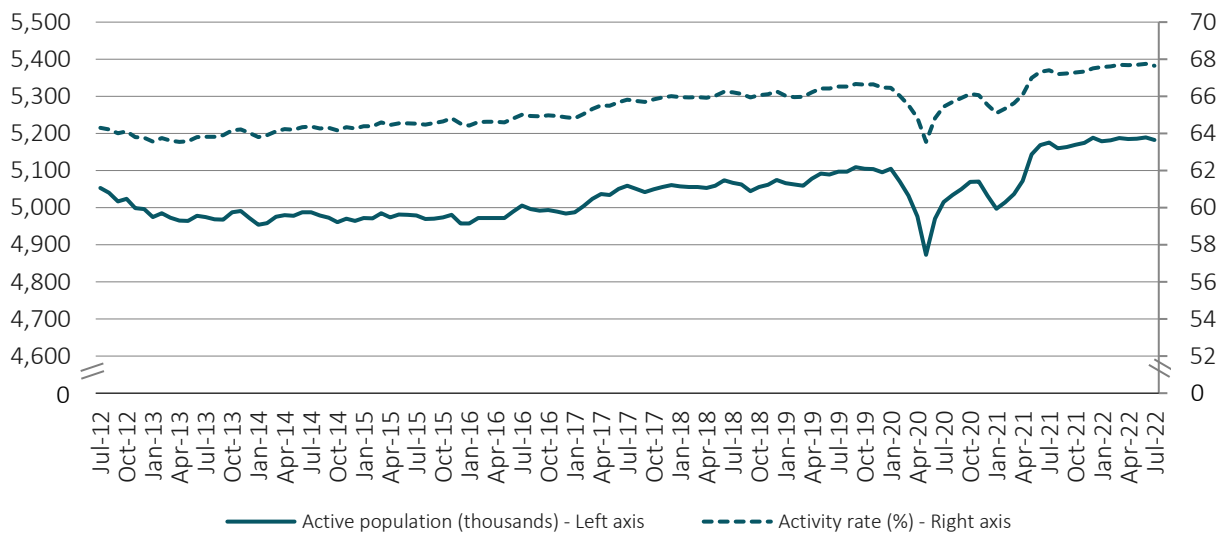
Note: The June 2022 estimates are provisional.

Also in July 2022, the labour underutilisation covered 614.0 thousand people, a lower number than in the previous month (4.7 thousand; 0.8%), higher than in three months before (1.8 thousand; 0.3%) and lower than a year earlier (52.0 thousand; 7.8%). The labour underutilisation rate was estimated at 11.5%, having decreased from the previous month (0.1 pp) and from a year before (0.9 pp), and having increased from three months before (0.1 pp).



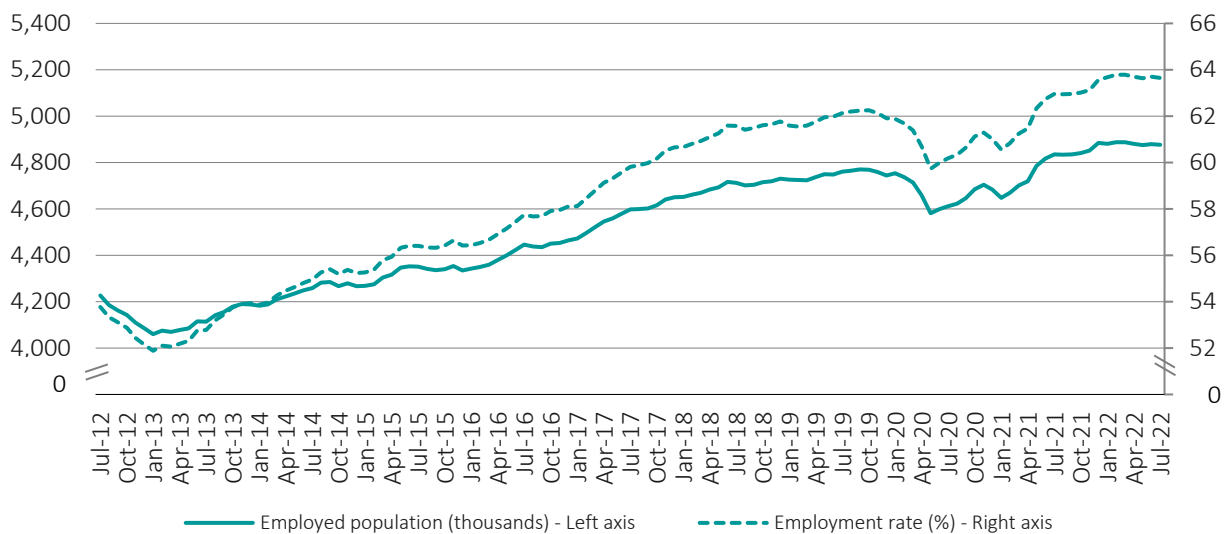
The following figures show the evolution in the last 10 years of the main indicators analysed in this Press Release. Despite the decrease observed in July 2022, the active population remained near the maximum of the past 10 years, recorded in June 2022 (5,159.5 thousand). In March 2022, the employment rate reached its highest value of the past 10 years (63.8%) and has remained stable and near that value in the previous months (63.7% in July).

Figure 3. Active population and activity rate
(seasonally adjusted data)



Note: The July 2022 estimates are provisional.

Figure 4. Employed population and employment rate
(seasonally adjusted data)

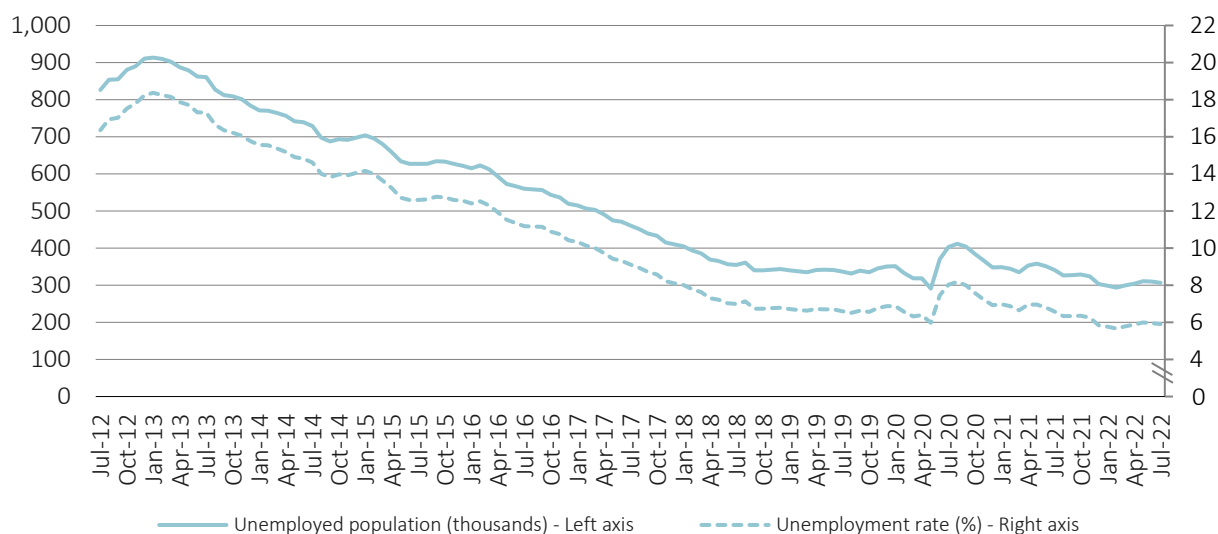


Note: The July 2022 estimates are provisional.



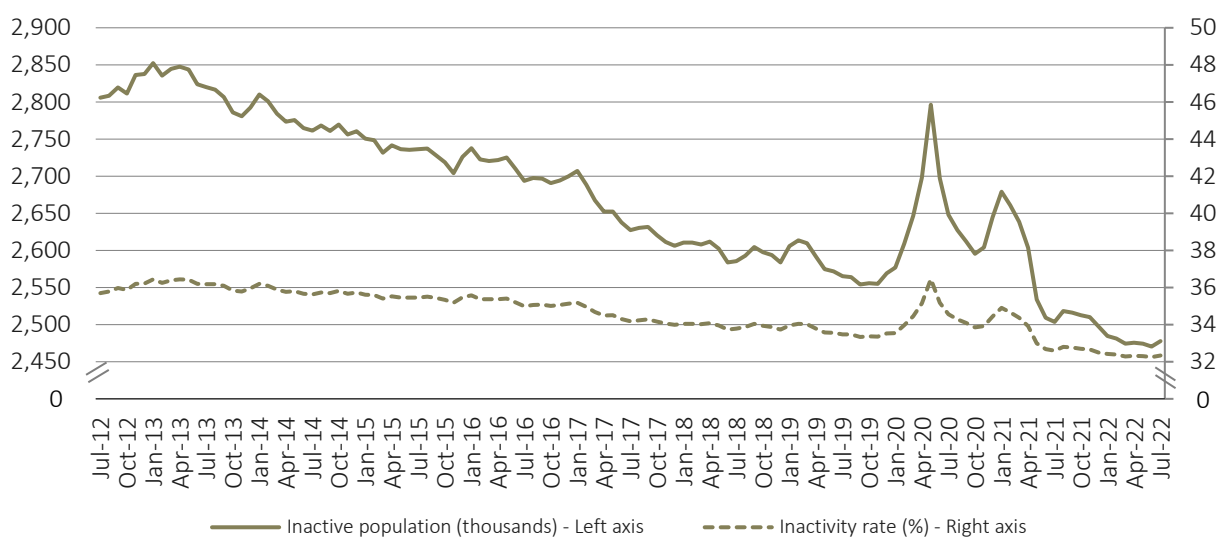
In July 2022, the unemployment rate stood at 5.9%, near its lowest value in the last 10 years observed in February (5.7%). In June 2022, the inactive population recorded its lowest value since February 1998 (2,470.5 thousand people).

Figure 5. Unemployed population and unemployment rate
(seasonally adjusted data)



Note: The July 2022 estimates are provisional.

Figure 6. Inactive population and inactivity rate
(seasonally adjusted data)

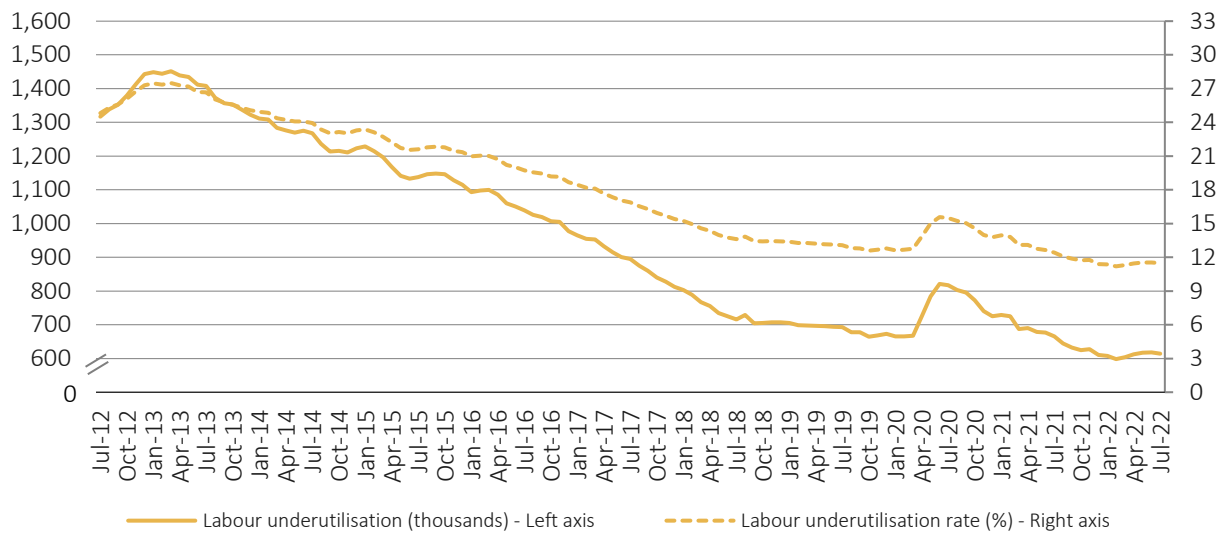


Note: The July 2022 estimates are provisional.



The labour underutilisation remained relatively stable, reaching in February 2022 its lowest value (598.1 thousand) since the beginning of the data series started in 2011. This was reflected in the underutilisation rate, which registered its lowest value also in that month (11.3%); in July it stood at 11.5%.

Figure 7. Labour underutilisation and labour underutilisation rate
(seasonally adjusted data)



Note: The July 2022 estimates are provisional.



Criteria used when classifying the population aged 16 to 74 by labour status

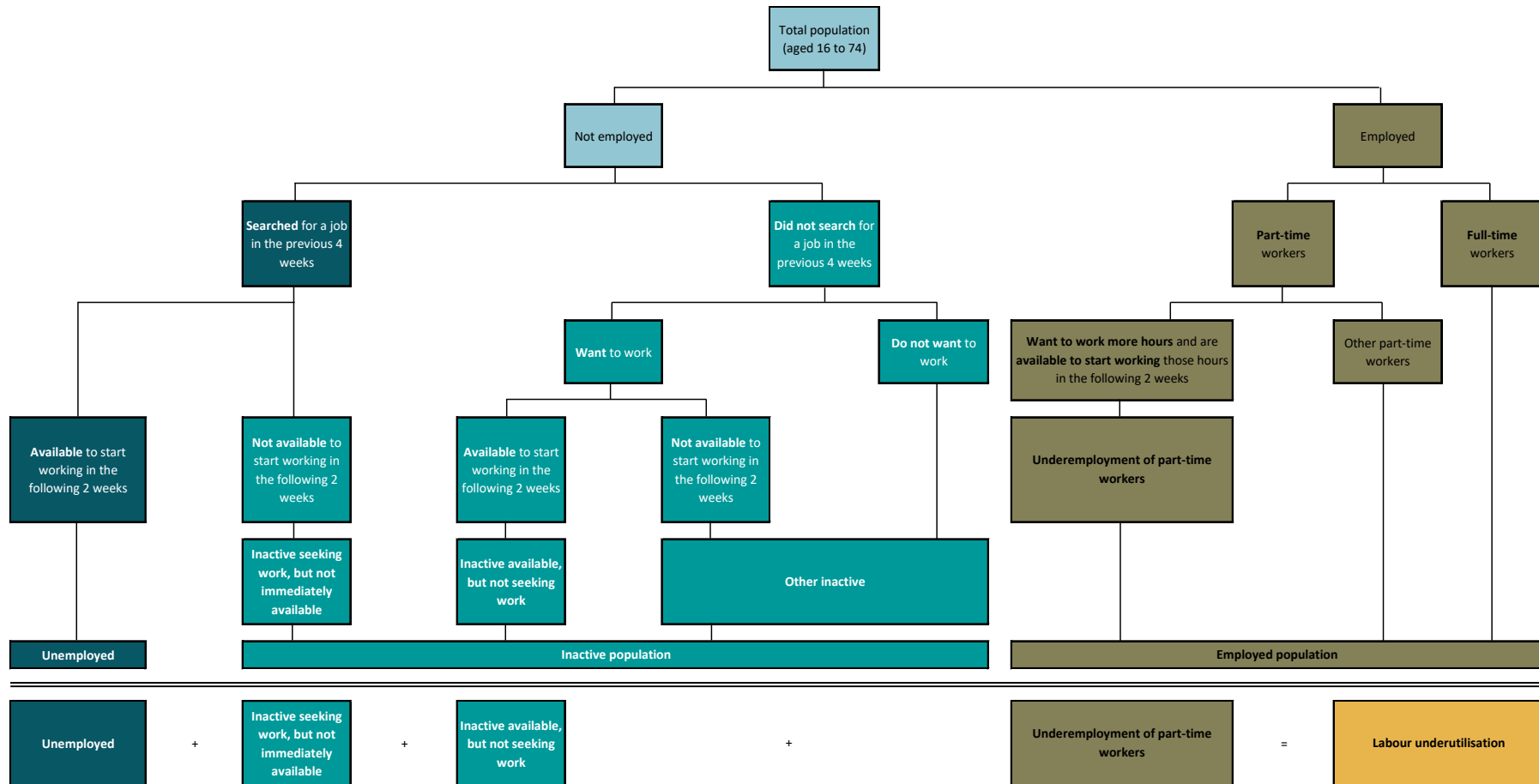




Table 1: Active population and active rate by sex and age group (16 to 74)

	Unit	Seasonally adjusted data						
		Jun 2021	Jul 2021	Mar 2022	Apr 2022	May 2022	Jun 2022	Jul 2022 (p)
Active population	Thousands	5,168.4	5,175.8	5,187.4	5,184.8	5,186.0	5,189.5	5,182.5
Employed population		4,816.9	4,834.8	4,887.3	4,880.4	4,874.9	4,879.8	4,876.2
Unemployed population		351.4	341.0	300.1	304.4	311.1	309.7	306.2
Inactive population		2,509.4	2,503.6	2,474.3	2,475.8	2,474.4	2,470.5	2,478.0
Labour underutilisation		677.4	666.0	604.3	612.2	617.8	618.7	614.0
Activity rate	%	67.3	67.4	67.7	67.7	67.7	67.7	67.7
Employment rate		62.7	63.0	63.8	63.7	63.6	63.7	63.7
Unemployment rate		6.8	6.6	5.8	5.9	6.0	6.0	5.9
Inactivity rate		32.7	32.6	32.3	32.3	32.3	32.3	32.3
Labour underutilisation rate		12.7	12.4	11.3	11.4	11.5	11.6	11.5

Source: Statistics Portugal, Labour Force Survey.

Note: (p) – Provisional estimates.

Table 2: Employed population and employment rate by sex and age group (16 to 74)

	Seasonally adjusted data					Not seasonally adjusted data				
	Jul 2021	Apr 2022	May 2022	Jun 2022	Jul 2022 (p)	Jul 2021	Apr 2022	May 2022	Jun 2022	Jul 2022 (p)
	Thousands									
Active population	5,175.8	5,184.8	5,186.0	5,189.5	5,182.5	5,172.3	5,174.0	5,171.6	5,179.4	5,179.1
Men	2,590.2	2,592.2	2,580.2	2,579.8	2,579.9	2,592.2	2,584.5	2,575.2	2,579.4	2,581.8
Women	2,585.6	2,592.5	2,605.8	2,609.8	2,602.6	2,580.1	2,589.5	2,596.5	2,600.0	2,597.3
Youth (aged 15 to 24)	337.6	331.0	326.1	321.2	319.6	340.4	322.9	317.1	317.1	322.4
Adults (aged 25 to 74)	4,838.2	4,853.8	4,859.9	4,868.3	4,862.9	4,831.9	4,851.1	4,854.5	4,862.3	4,856.7
	%									
Activity rate	67.4	67.7	67.7	67.7	67.7	67.4	67.5	67.5	67.6	67.6
Men	70.6	71.0	70.7	70.7	70.7	70.7	70.8	70.5	70.7	70.7
Women	64.5	64.7	65.0	65.1	64.9	64.3	64.6	64.8	64.8	64.8
Youth (aged 15 to 24)	34.0	33.6	33.1	32.6	32.5	34.3	32.7	32.2	32.2	32.7
Adults (aged 25 to 74)	72.4	72.7	72.8	72.9	72.8	72.3	72.7	72.7	72.8	72.7

Source: Statistics Portugal, Labour Force Survey.

Note: (p) – Provisional estimates.



Table 3: Unemployed population and unemployment rate by sex and age group (16 to 74)

	Seasonally adjusted data					Not seasonally adjusted data				
	Jul 2021	Apr 2022	May 2022	Jun 2022	Jul 2022 (p)	Jul 2021	Apr 2022	May 2022	Jun 2022	Jul 2022 (p)
	Thousands									
Unemployed population	341.0	304.4	311.1	309.7	306.2	320.6	304.4	298.8	288.7	286.0
Men	158.8	139.6	147.7	149.1	145.1	146.6	141.3	144.0	139.2	133.0
Women	182.2	164.8	163.4	160.6	161.1	174.0	163.1	154.8	149.5	153.0
Youth (aged 15 to 24)	78.0	67.9	60.0	60.8	56.7	73.8	63.8	53.0	54.3	52.5
Adults (aged 25 to 74)	263.0	236.4	251.0	248.8	249.5	246.8	240.6	245.8	234.4	233.5
	%									
Unemployment rate	6.6	5.9	6.0	6.0	5.9	6.2	5.9	5.8	5.6	5.5
Men	6.1	5.4	5.7	5.8	5.6	5.7	5.5	5.6	5.4	5.2
Women	7.0	6.4	6.3	6.2	6.2	6.7	6.3	6.0	5.8	5.9
Youth (aged 15 to 24)	23.1	20.5	18.4	18.9	17.8	21.7	19.8	16.7	17.1	16.3
Adults (aged 25 to 74)	5.4	4.9	5.2	5.1	5.1	5.1	5.0	5.1	4.8	4.8

Source: Statistics Portugal, Labour Force Survey.

Note: (p) – Provisional estimates.

Table 4: Inactive population and inactivity rate by sex and age group (16 to 74)

	Seasonally adjusted data					Not seasonally adjusted data				
	Jul 2021	Apr 2022	May 2022	Jun 2022	Jul 2022 (p)	Jul 2021	Apr 2022	May 2022	Jun 2022	Jul 2022 (p)
	Thousands									
Inactive population	2,503.6	2,475.8	2,474.4	2,470.5	2,478.0	2,507.1	2,486.6	2,488.8	2,480.7	2,481.4
Men	1,078.2	1,058.7	1,070.5	1,070.8	1,071.2	1,076.1	1,066.4	1,075.6	1,071.2	1,069.3
Women	1,425.4	1,417.2	1,403.9	1,399.7	1,406.8	1,430.9	1,420.2	1,413.2	1,409.4	1,412.1
Youth (aged 15 to 24)	655.3	655.2	659.5	663.9	665.0	652.5	663.3	668.5	668.0	662.2
Adults (aged 25 to 74)	1,848.3	1,820.7	1,814.9	1,806.7	1,813.0	1,854.6	1,823.3	1,820.3	1,812.7	1,819.2
	%									
Inactivity rate	32.6	32.3	32.3	32.3	32.3	32.6	32.5	32.5	32.4	32.4
Men	29.4	29.0	29.3	29.3	29.3	29.3	29.2	29.5	29.3	29.3
Women	35.5	35.3	35.0	34.9	35.1	35.7	35.4	35.2	35.2	35.2
Youth (aged 15 to 24)	66.0	66.4	66.9	67.4	67.5	65.7	67.3	67.8	67.8	67.3
Adults (aged 25 to 74)	27.6	27.3	27.2	27.1	27.2	27.7	27.3	27.3	27.2	27.3

Source: Statistics Portugal, Labour Force Survey.

Note: (p) – Provisional estimates.



Table 5: Labour underutilisation and labour underutilisation rate (16 to 74)

	Seasonally adjusted data					Not seasonally adjusted data				
	Jul 2021	Apr 2022	May 2022	Jun 2022	Jul 2022 (p)	Jul 2021	Apr 2022	May 2022	Jun 2022	Jul 2022 (p)
	Thousands									
Labour underutilisation	666.0	612.2	617.8	618.7	614.0	649.4	606.4	600.7	596.1	596.0
Unemployed population	341.0	304.4	311.1	309.7	306.2	320.6	304.4	298.8	288.7	286.0
Underemployed part-time workers	141.6	144.6	143.1	143.2	143.0	142.3	143.9	141.6	142.5	142.5
Persons seeking work but not immediately available	34.8	28.2	31.1	37.1	41.4	34.8	28.2	31.1	37.1	41.4
Persons available to work but not seeking	148.6	135.1	132.4	128.7	123.4	151.7	130.0	129.1	127.9	126.1
	%									
Labour underutilisation rate	12.4	11.4	11.5	11.6	11.5	12.1	11.4	11.3	11.2	11.1

Source: Statistics Portugal, Labour Force Survey.

Note: (p) – Provisional estimates.



METHODOLOGICAL NOTE

LABOUR FORCE SURVEY

The main purpose of the Labour Force Survey is to characterise the population in terms of the labour market. It is a quarterly sample survey, addressed to families occupying the same dwelling in the national territory, which makes available quarterly and annual data.

Most of the characteristics observed in this survey report to the situation in one pre-defined week (from Monday to Sunday), known as reference week. The reference weeks are uniformly distributed throughout the quarters and years. The interviews usually take place in the week following the reference week.

The information is obtained directly, through computer-assisted interview. Until the first fortnight of March 2020, the data were collected by using a mixed data collection mode: the initial interview is done face-to-face by an interviewer visiting the household and the other five interviews are done by telephone if certain requirements are met. Following the COVID-19 pandemic and the measures adopted by the competent authorities, Statistics Portugal has decided, as of that date and until further notice, to suspend the face-to-face collection mode, replacing it exclusively with the telephone interview one.

Published data were calibrated by using the population estimates calculated from the final results of Census 2011.

MONTHLY EMPLOYMENT AND UNEMPLOYMENT ESTIMATES

In 2014, Statistics Portugal initiated a monthly release of Labour Force Survey estimates for the main labour market indicators in addition to the usual quarterly estimates' releases.

With this initiative, Statistics Portugal intends to provide to users monthly updated information on labour market recent developments, allowing, at the same time, a more complete reading picture than that provided so far by Eurostat in its monthly releases of the unemployed population and unemployment rate estimates for Portugal. With this dissemination, Statistics Portugal also satisfies a specific requirement from the PEEIs (Principal European Economic Indicators).

Taking advantage of the continuous nature of the Labour Force Survey collection process, it is possible to monthly obtain estimates related to successive sets of three months (moving quarters), assuring consistency with the quarterly released estimates.

The monthly estimates refer to centred moving quarters, where the reference month (m) corresponds to the central month of each moving quarter. In fact, the reference month of each Press Release corresponds to the central month of the quarter composed by m-1, m and m+1 months. Therefore, the monthly changes are calculated on values that contain common months. Therefore, the comparison of moving quarters without common months should be done in relation to reference months three months earlier.



The option for disseminating centred moving quarters series aimed at avoiding delays in the detection of turning points in the economic cycle that arise from the use of simple moving averages, but it implies that the estimates for the latest released moving quarter are provisional (see “Revisions” section below).

As estimates of centred moving quarters, the values (not seasonally adjusted) of the reference months February, May, August and November of each year correspond to the estimates of the 1st, 2nd, 3rd and 4th natural quarters, respectively, whose results are published and analysed with greater detail in the quarterly releases of the Labour Force Survey estimates.

The estimates for the last reference month are always provisional, as they correspond to a moving quarter where for the third month the data collection is not completed yet. In fact, for the first two months ($m-1$ and m) the data collection from the Labour Force Survey is already completed, while for the third month ($m+1$) only partially collected data are available.

In this context, in each monthly Press Release the provisional estimates for the reference month and the revised estimates for the previous months are published, due the availability of complete information for the last moving quarter.

INFORMATION AVAILABLE

The data series selected for monthly releases refer to both employed and unemployed population, by sex and age group, and to the corresponding rates. In relation to these data series, it should be noted the following:

- Unless otherwise stated, the data series analysed in this Press Release are seasonally adjusted. For this reason, the analysis focuses on the comparison with the most recent periods. As agreed, Eurostat started using these estimates in its unemployment monthly releases. The original data series (not seasonally adjusted; as in the Statistics Portugal quarterly releases), are available in Tables of the annex.
- The indicators analysed in this Press Release were calculated for the age subgroup of those aged 16 to 74 (as in the Eurostat News Release), which differs from the criterion adopted at the Statistics Portugal quarterly releases (people aged 16 to 89, in line with the concepts in force of the International Labour Organization).

The back series for all the released and analysed indicators in this Press Release, since February 1998 (quarter from January to March 1998), are available at the Statistics Portugal website and the links to them can be found in the Excel file released together with this Press Release.

Due to rounding, totals may not correspond exactly to the sum of the parts.

REVISIONS

The monthly released data are subject to regular revisions, as previously mentioned. The revisions come from obtaining the final estimates for the previous reference month (moving quarter) due to the conclusion of its last month collection process. Therefore, in each Press Release the not seasonally adjusted final estimates for the previous reference month are published. In addition, are also presented the final estimates resulting from updating of the seasonally adjusted data series whenever a new observation is added.



Revision of June 2022 estimates (16 to 74)

- main indicators -

	Unit	Seasonally adjusted data	Not seasonally adjusted data
Active population		20.3	13.4
Employed population		24.3	24.6
Unemployed population	Thousands	- 4.0	- 11.2
Inactive population		- 20.4	- 13.4
Labour underutilisation		1.0	- 10.9
Employment rate		0.3	0.3
Unemployment rate		- 0.1	- 0.2
Men's unemployment rate		- 0.1	- 0.3
Women's unemployment rate	pp	- 0.1	- 0.1
Youth unemployment rate (16 to 24)		- 0.4	- 0.3
Adults' unemployment rate (25 to 74)		- 0.1	- 0.3
Labour underutilisation rate		0.0	- 0.2

SOME CONCEPTS

Unemployed: person aged 16 and 74 who during the reference period met simultaneously the following conditions:

- neither had a job nor was at work;
- had actively sought work, i.e., had actively searched for a paid or unpaid job during the specified period (reference period or the three previous weeks); and
- was available for a paid or unpaid job.

Employed: person aged 16 to 89 who, during the reference period, was in one of the following situations:

- worked for at least one hour for a wage or salary, in cash or in kind (including unpaid family work);
- had a formal attachment to his/her job but was not at work temporarily;
- was in early retirement but working in the reference week.

Working age resident population: Resident population aged 16 to 89.

Active: person aged 16 to 89 who, during the reference period, furnish the supply of labour force for the production of economic goods and services (was employed or unemployed).

Labour force: population formed by all active persons.

Extended labour force: corresponds to the labour force enlarged by the inactive seeking work but not immediately available and the inactive available but not seeking work.



Labour underutilisation: indicator that aggregates the unemployed population, the underemployment of part-time workers, the inactive seeking work but not immediately available, and the inactive available but not seeking work.

Unemployment rate: rate that defines the relation between the unemployed population and the labour force.

$$\text{U.R. (\%)} = (\text{Unemployed population} / \text{Labour force}) \times 100$$

Employment rate: rate that defines the relation between the employed population and the working age population.

$$\text{E.R. (\%)} = (\text{Employed population} / \text{Working age population}) \times 100$$

Activity rate of the working age population: rate that defines the relation between the labour force and the working age population.

$$\text{A.R. (\%)} = (\text{Labour force} / \text{Working age population}) \times 100$$

Inactivity rate of the working age population: rate that defines the relation between the working age inactive population and the working age population.

$$\text{I.R. (\%)} = (\text{Working age inactive population} / \text{Working age population}) \times 100$$

Labour underutilisation rate: rate that defines the relation between the labour underutilisation and the extended labour force.

$$\text{L.U.R. (\%)} = (\text{Labour underutilisation} / \text{Extended labour force}) \times 100$$

For the indicators selected for monthly dissemination, it was considered the age subgroup of those aged 16 to 74.

Para For a more detailed definition of the concepts and methodological features of this statistical operation, consult the [Labour Force Survey](#) or the [Monthly Employment and Unemployment Estimates](#) methodological documents (both only in Portuguese) available at the Statistics Portugal website.

Next Press Release

29 September 2022: “Monthly Employment and Unemployment Statistics – August 2022”.

30 September 2022: Eurostat News Release.
