



15 July 2022

VITAL STATISTICS – Monthly data

June 2022

MORTALITY, LIVE BIRTHS AND MARRIAGES

MARRIAGES CELEBRATED IN MAY REACH PRE-PANDEMIC VALUES

In June 2022, the number of deaths was 10,156, lower than that registered in May 2022 (217 less deaths; -2.1%) and higher than that observed in June 2021 (1,941 more deaths; +23.6%). From January to June 2022, there were 63,926 deaths, 3,386 fewer deaths than in the same period of 2021 (-5.0%).

In June 2022, the number of deaths due to COVID-19 increased to 977 (108 more deaths than in May 2022), accounting for 9.6% of all deaths. Compared with June 2021, there was an increase of 901 deaths due to COVID-19.

In May 2022, 6,772 children were born alive, corresponding to a reduction of 0.6%, compared to the same month of 2021. However, the total number of live births registered in the first five months of 2022 (31,979) was higher than that observed in the same period of 2021 (31,504), representing 475 more (1.5 %) live births.

In May 2022, the natural balance was -3,570, having increased compared to the same month of 2021, when it recorded the value of -1,807. In the first five months of 2022, the accumulated value of the natural balance was -21,672, improving the figure registered in the same period of 2021 (-27,576).

The number of marriages celebrated in May 2022 was 3,503, corresponding to 1.3 times the number of marriages celebrated in May 2021 (887 more marriages). From January to May 2022, 9,909 marriages were celebrated, 4,476 more than in the same period of 2021.

In this press release, Statistics Portugal provides **preliminary data** regarding the number of deaths, per month until June 2022 and per week until the 26th week of 2022 (June 27th to July 3rd, 2022), and the number of live births and marriages per month until May 2022, that occurred in the national territory, making a comparison with the same period of the last year. Indicators on the preliminary monthly number of live births, deaths, and marriages, from January to April 2022, with geographical breakdowns up to NUTS 3, as well as weekly number of deaths, until the 26th week of 2022, by NUTS 3 and daily number of deaths, until July 3rd, by NUTS 2 are made available on the Statistics Portugal Website.

The information is obtained through the Civil Register collected under the Integrated Civil Registration and Identification System (SIRIC) until July 12th, 2022.

The data presented regarding the number of deaths due to COVID-19, whose source is the Directorate-General for Health (report “Number of New Cases and Deaths Per Day”), were extracted on July 12th, 2022.

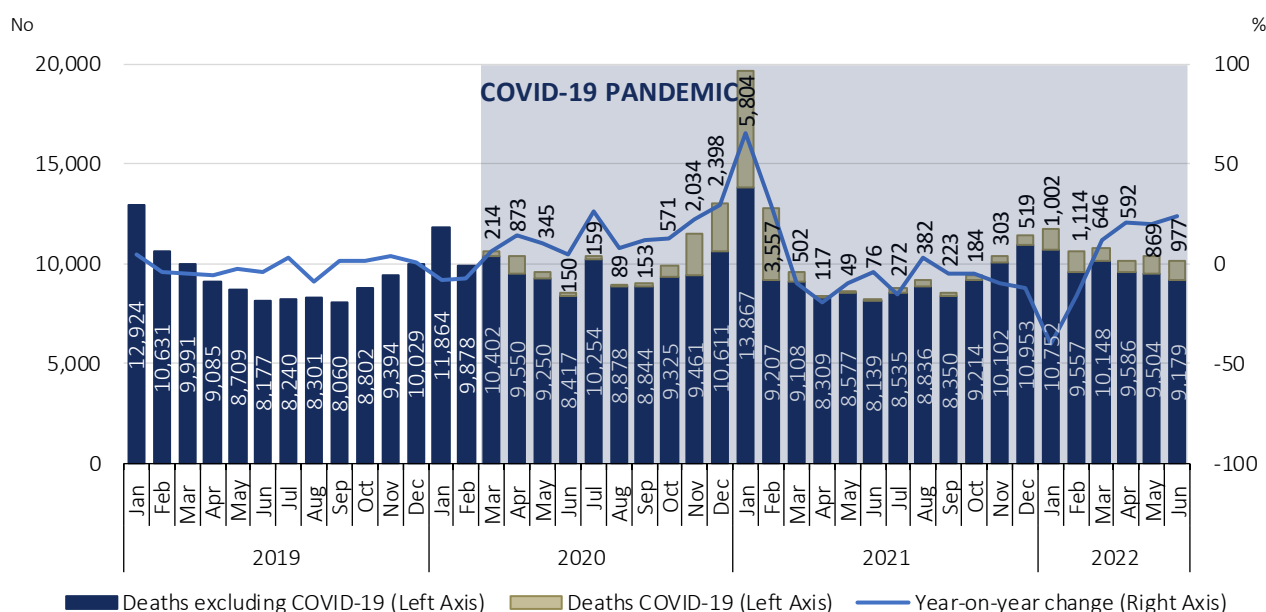
VITAL STATISTICS – Monthly Data – June 2022



In June 2022, mortality increased by 23.6% when compared to the same month of 2021

In June 2022, the number of deaths was 10,156, 217 fewer deaths than in the previous month. Compared to the same month of 2021, the number of deaths increased by 23.6% (1,941 more deaths). The number of deaths due to COVID-19 increased to 977 (108 more deaths compared with May 2022), accounting for 9.6% of all deaths. Compared with June 2021, there was an increase of 901 deaths due to COVID-19.

Figure 1. Deaths and year-on-year change, January 2019 to June 2022

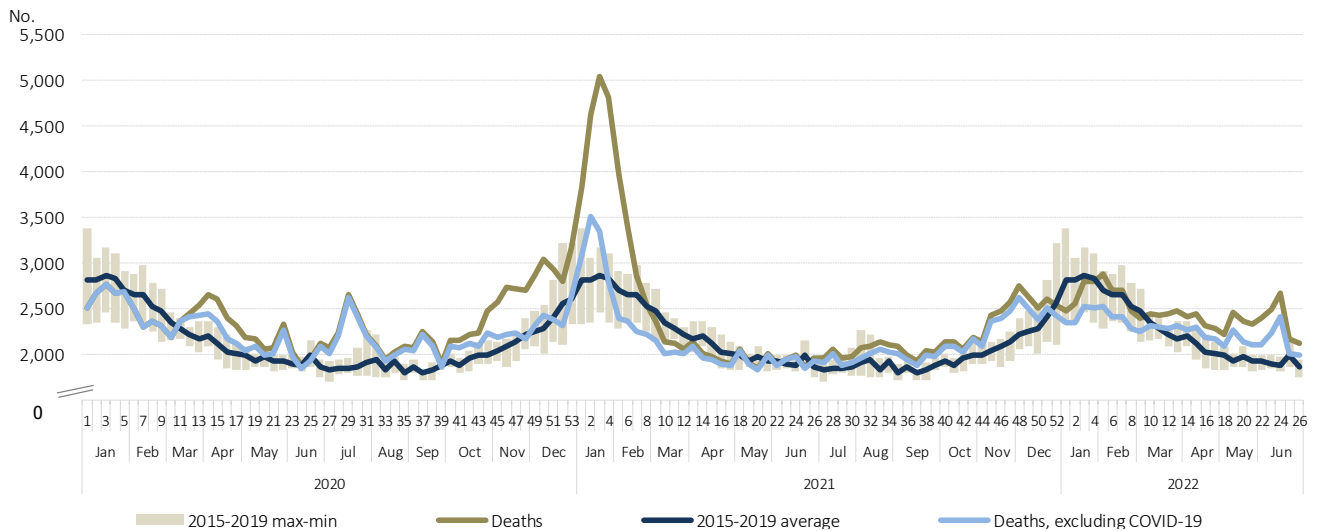


Source: Statistics Portugal, Deaths. Directorate-General of Health, [Number of New Cases and Deaths Per Day](#) (extracted on 12/07/2022).

Between January 31st and February 20th, 2022 (weeks 5 to 7), the number of deaths was higher than the average of the 5 years before the pandemic. Between February 21st and March 6th (weeks 8 and 9), the number of deaths returned to figures below the 2015-2019 average, as had already been registered in the last week of 2021 and the first four weeks of 2022. From March 7th to July 3rd (weeks 10 to 26), the number of deaths was again above the average for the reference period (2015-2019).

In the 26th week of 2022 (June 27th to July 3rd), there were 2,114 deaths, of which 134 were due to COVID-19, accounting for 6.3% of all deaths.

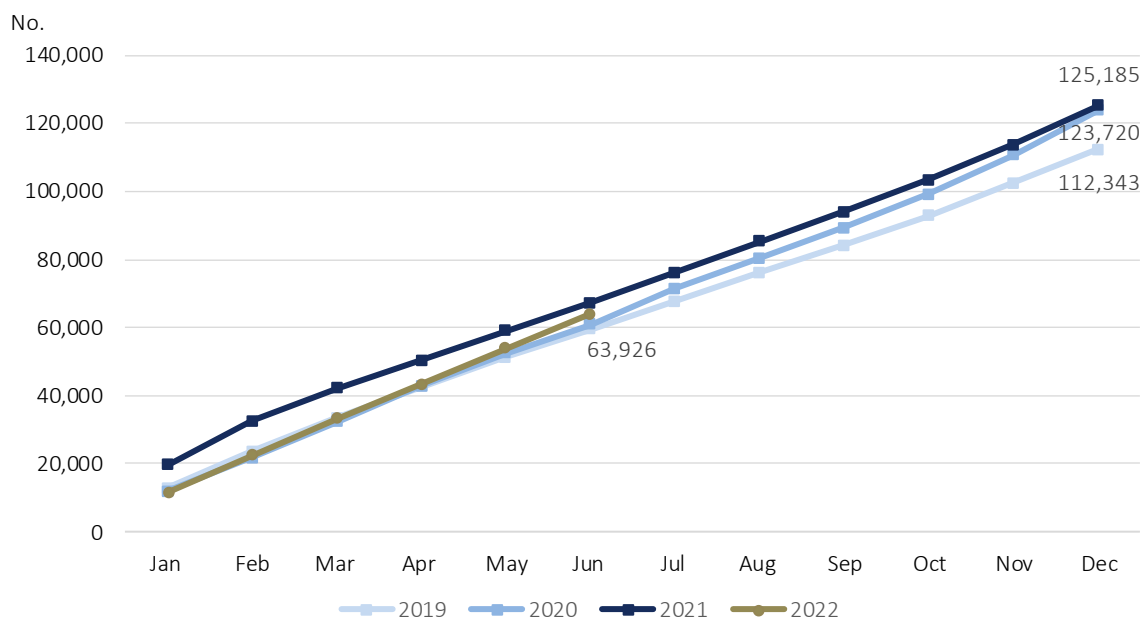
Figure 2. Deaths 2020, 2021, 2022 and average 2015-2019, by week, weeks 1 of 2020 to 26 of 2022



Source: Statistics Portugal, Deaths. Directorate-General of Health, [Number of New Cases and Deaths Per Day](#) (extracted on 12/07/2022).

In the first semester of 2022, there were 63,926 deaths, 3,386 fewer deaths than in the same period of 2021 (-5.0%).

Figure 3. Monthly deaths (cumulative numbers), 2019, 2020, 2021 and 2022

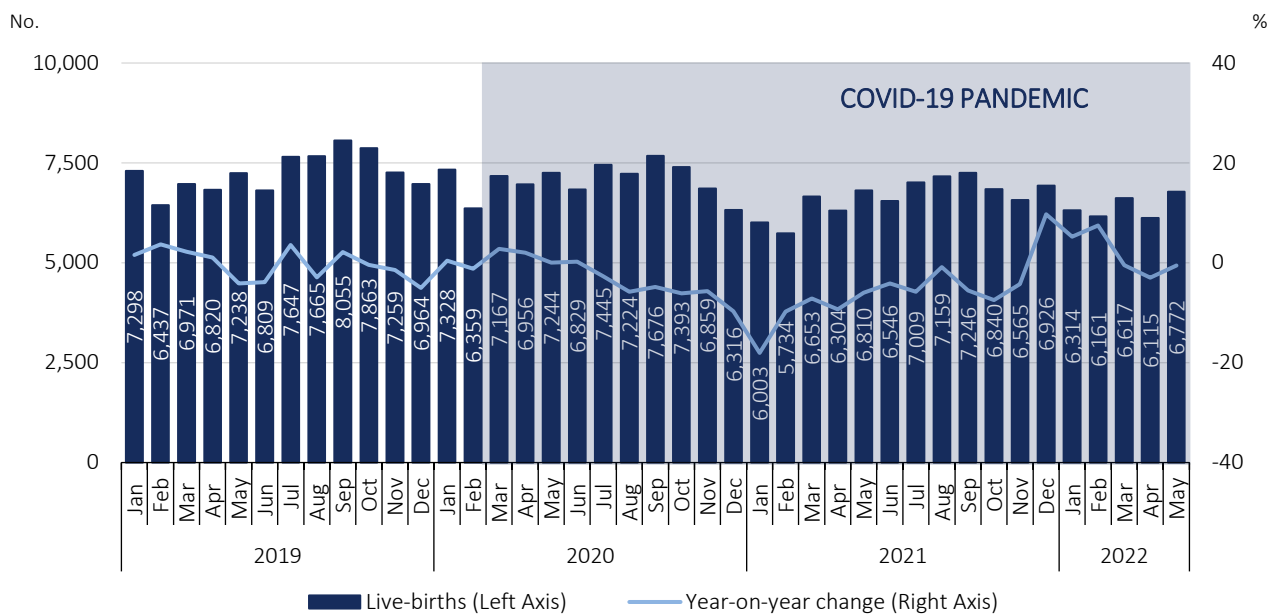


Source: Statistics Portugal, Deaths.

In May 2022, the number of live births decreased 0.6% compared to the same month of 2021

In April and May 2022, respectively, 6,115 and 6,772 children were born alive, corresponding to decreases of 3.0% (189 less) and 0.6% (38 less) compared to the same months of 2021.

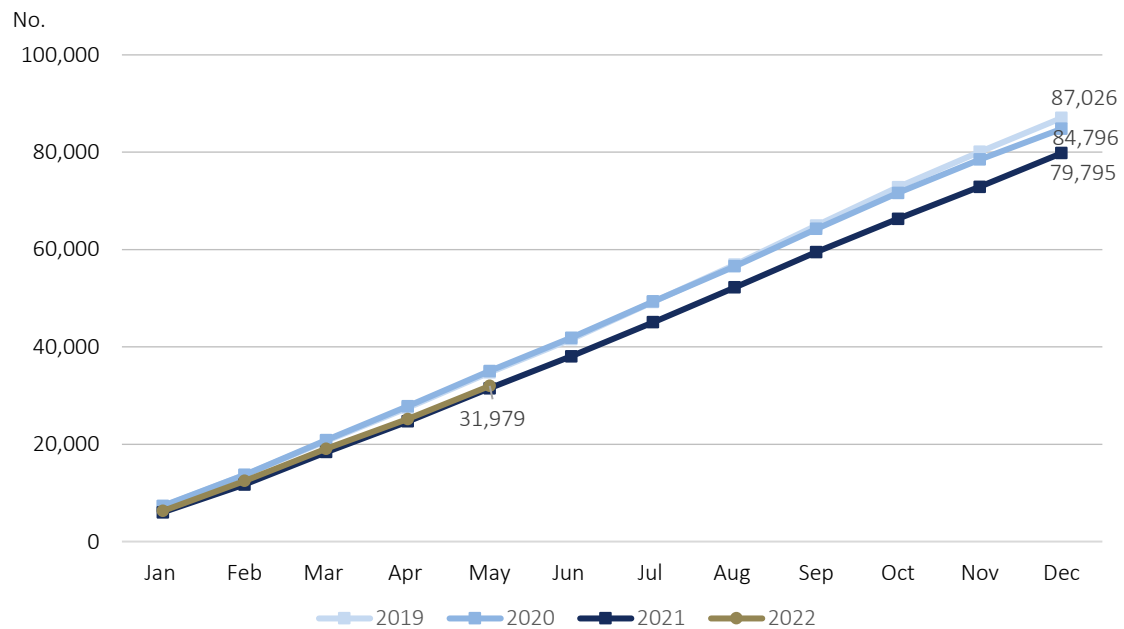
Figure 4. Live births and year-on-year change, January 2019 to May 2022



Source: Statistics Portugal, Live births.

The total number of live births registered in the first five months of 2022 (31,979) was higher than that observed in the same period of 2021 (31,504), representing 475 more (1.5 %) live births.

Figure 5. Monthly live births (cumulative numbers), 2019, 2020, 2021 and 2022

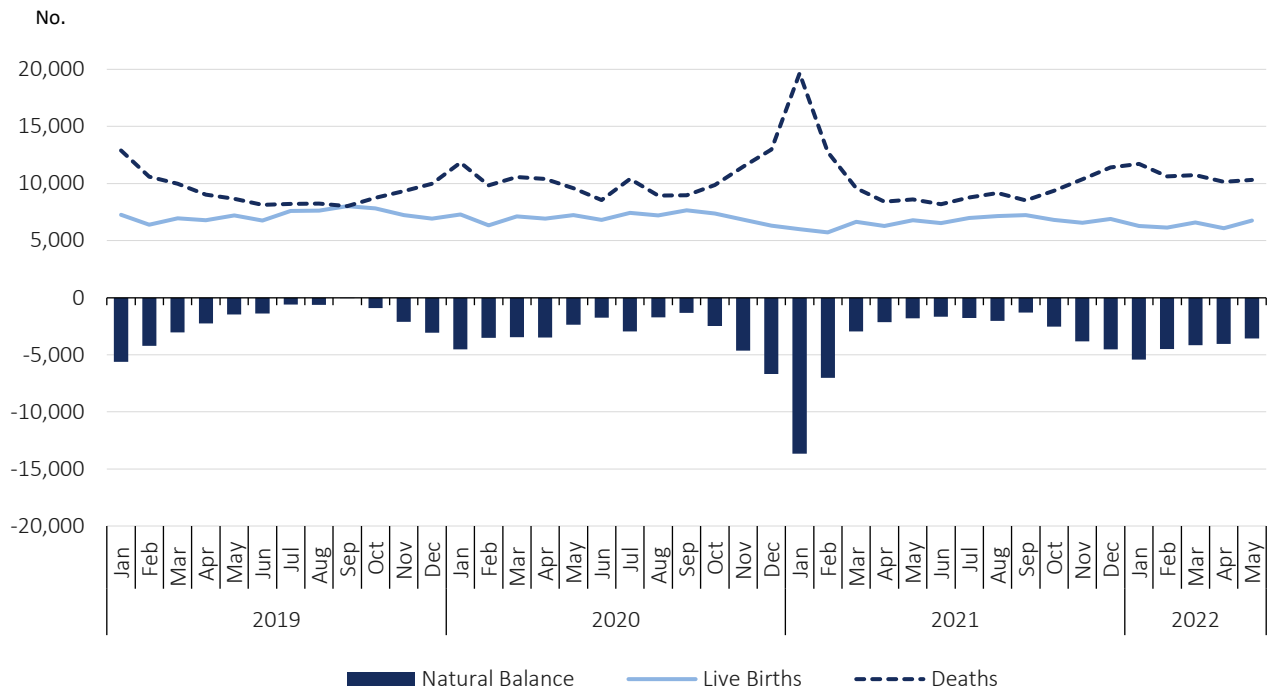


Source: Statistics Portugal, Live births.

In May 2022, the natural balance was -3,570

In April and May 2022, the natural balance registered, respectively, values of -4,044 and -3,570. The value of the natural balance recorded in May worsened compared to that registered in the same month of 2021 (-1,807).

Figure 6. Live births, deaths, and natural balance¹, January 2019 to May 2022

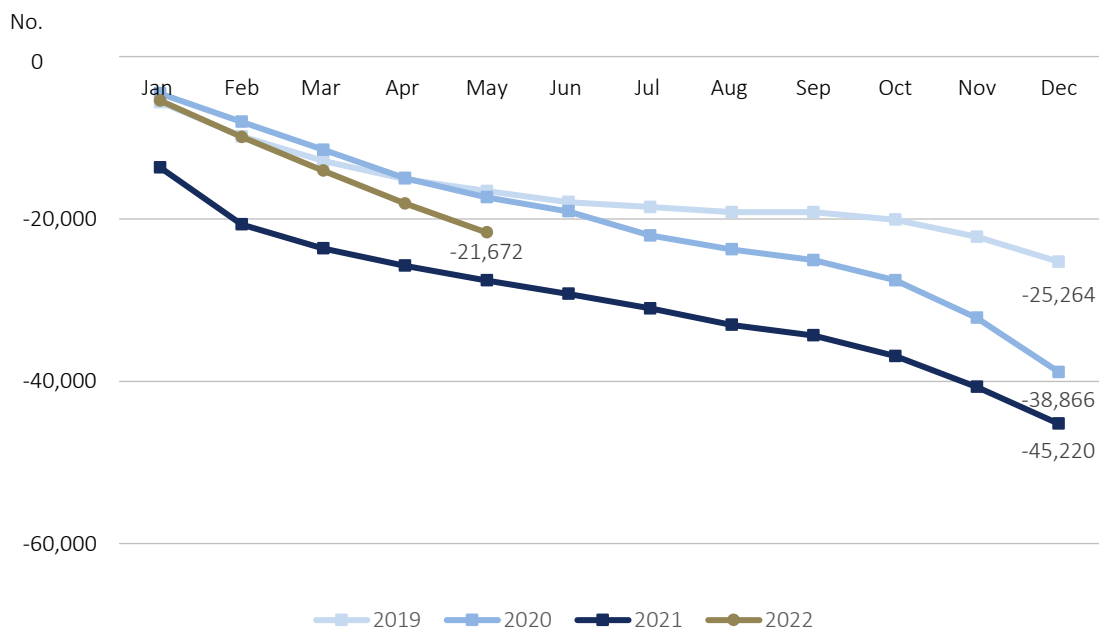


Source: Statistics Portugal, Live births, Deaths, and Demographic indicators.

In the first five months of 2022, the accumulated value of the natural balance was -21,672, improving the figure registered in the same period of 2021 (-27,576).

¹ The natural balance is calculated based on the number of live births of mothers residing in Portugal and the number of deaths of residents in Portugal.

Figure 7. Monthly natural balance (cumulative numbers), 2019, 2020, 2021 and 2022

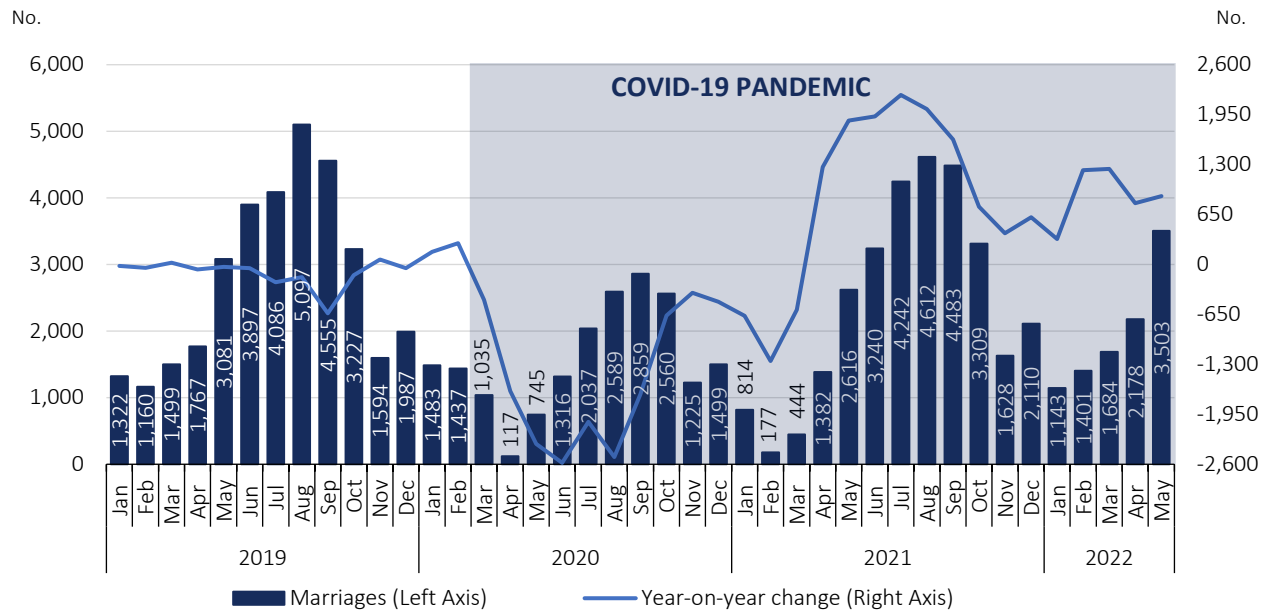


Source: Statistics Portugal, Live births, Deaths, and Demographic indicators.

In May 2022, 887 more marriages were celebrated than in May 2021

In April and May 2022, 2,178 and 3,503 marriages, respectively, were celebrated, corresponding to 1.6 and 1.3 times the number of marriages celebrated in April and May 2021 (796 and 887 more marriages).

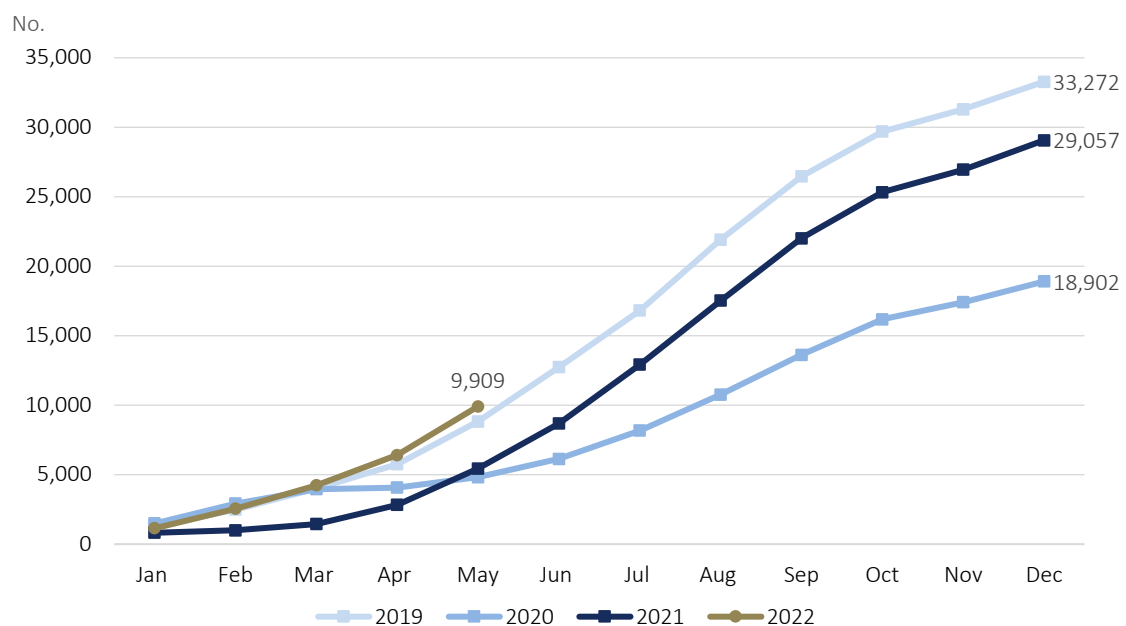
Figure 8. Marriages and year-on-year change, January 2019 to May 2022



Source: Statistics Portugal, Marriages.

From January to May 2022, 9,909 marriages were celebrated, 4,476 more than in the same period of 2021, and, respectively, 1,080 and 5,092 more than in the same months of 2019 and 2020.

Figure 9: Monthly marriages (cumulative numbers), 2019, 2020, 2021 and 2022



Source: Statistics Portugal, Marriages.



TECHNICAL NOTE

Statistics Portugal releases the **preliminary** monthly **numbers** of deaths, live births, and marriages based on the information registered in the Civil Register Offices until July 12th, 2022. Indicators on the preliminary monthly number of live births, deaths, and marriages, from January to April 2022, with geographical breakdowns up to NUTS 3, as well as weekly number of deaths, until the 26th week 2022, by NUTS 3 and daily number of deaths, until July 3rd by NUTS 2 are made available on the Statistics Portugal Website. In this Press Release the total **preliminary figures** of live births and marriages are disclosed for the month of May 2022.

Data are obtained from statistical operations of direct and exhaustive collection on live births, deaths and marriages in Portuguese territory using facts that are subject to compulsory civil registration (birth and death) in the Sistema Integrado do Registo e Identificação Civil (SIRIC).

In addition to administrative information obtained from Civil Register Offices, Statistics Portugal collects an additional set of variables identified as statistically pertinent to the National Statistic System (NSS) and the European Statistical System (EES). Data is recorded and sent electronically, in compliance with the requirements set out by Statistics Portugal and laid down in liaison with the Instituto de Registos e Notariado (IRN) and the Instituto de Gestão Financeira e Equipamentos da Justiça (IGFEJ).

Data on the number of deaths due to COVID-19 are also used, whose source is the “Number of New Cases and Deaths Per Day” Report of the Directorate-General for Health.

DEFINITIONS

Marriage: Contract signed by two persons that intend to start a family in full partnership and cohabitation according to legislation. Note: marriage can be held between persons from different or same sex.

Live birth: This is the complete expulsion or extraction from the mother's body, irrespective of the duration of the pregnancy, of a product of fertilization that, after separation, breathes or shows any other signs of life, such as a beating of the heart or umbilical cord or actual contraction of any muscle subject to voluntary movement, whether the umbilical cord has been severed and whether the placenta is retained.

Death: The permanent disappearance of vital functions.

Natural balance: The difference between the number of live births and the number of deaths during a given period, usually a calendar year.

Year-on-year change: The year-on-year change compares the level of a variable between the reference month and the same month of the previous year.

Detailed methodological information available at: www.ine.pt, option Products, Metadata system.

Detailed statistical information available at: www.ine.pt, option Products, Statistical data, database, theme Population, subtheme Births and natality rates and subtheme Mortality and life expectancy.