



14 June 2022

INDICES OF PRODUCTION, EMPLOYMENT AND WAGES IN CONSTRUCTION

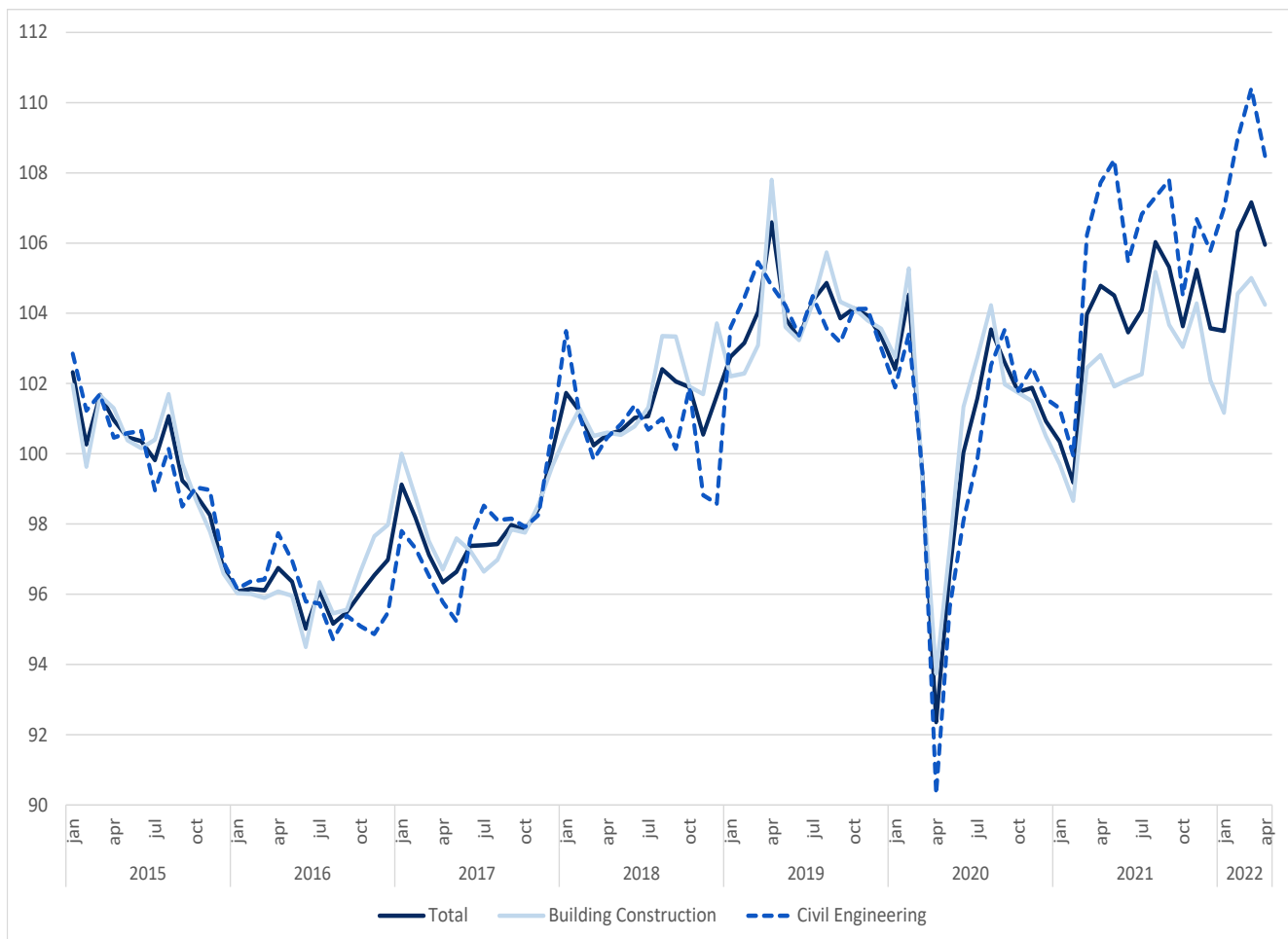
April 2022

CONSTRUCTION PRODUCTION INDEX GREW 3.7%

The index of production in construction increased 3.7% in year-on-year terms, in April (3 months moving average, working days and seasonally adjusted), down by 0.7 percentage points from March.

Employment and wages and salaries grew 2.5% and 8.8% (2.3% and 8.7% in the previous month), respectively.

Figure 1. Indices of Production in Construction (2015=100)



Next press release – July 13th 2022