



IN APRIL, THE UNEMPLOYMENT RATE STOOD AT 5.8% AND THE LABOUR UNDERUTILISATION RATE AT 11.2%

March 2022:

- The active population (5,188.6 thousand) increased by 0.1% from the previous month, had a null relative change from three months before and increased by 2.9% from the same month of 2021.
- The employed population (4,889.2 thousand) remained almost unchanged from the previous month and increased from three months before (0.1%) and from the same month of 2021 (4.0%).
- The unemployed population (299.4 thousand) increased by 2.1% from February of 2021, having decreased by 1.4% from three months before and by 11.2% from March of last year.
- The unemployment rate stood at 5.8%, up 0.1 percentage points(pp) from the previous month, down 0.1 pp from three months before and down 0.9 pp from a year earlier.
- The inactive population (2,473.1 thousand) decrease from the three comparison periods: 0.3%, 0.9% and 6.1%, respectively.
- The labour underutilisation rate was estimated at 11.2%, down 0.1 pp from the previous month, down 0.2 pp from three months before and down 1.7 pp from a year earlier.

April 2022¹:

- The active population (5,183.2 thousand) decreased by 0.1% from March 2022, remained almost unchanged from January of 2022 and increased by 2.2% from April 2021.
- The employed population (4,882.7 thousand) decreased by 0.1% from the previous month, had a null relative change from three months before, having increased by 3.5% from a year earlier.
- The unemployed population (300.4 thousand) increased by 0.3% from the previous month, by 0.5% from January of the same year, having decreased from April of last year (14.7%).
- The unemployment rate stood at 5.8%, remained unchanged both from the previous month and three months before, but down 1.1 pp from a year before.
- The inactive population (2,477.4 thousand) increased by 0.2% from the previous month and decreased by 0.2% and by 4.9% from three months before and from a year earlier, respectively.
- The labour underutilisation rate stood at 11.2%, the same value as in the previous month, down 0.1 pp from three months before and down 1.8 pp from April 2021.

¹ The estimates for the last reference month (in this case, the quarter centred in April 2022: from March to May 2022) were calculated with incomplete information for the last month of the quarter (May 2022). These estimates will be revised next month (as described in the methodological note).



The table below presents the main indicators of the Monthly Employment and Unemployment Estimates.

Monthly Employment and Unemployment Estimates (16 to 74)

Main Indicators

	Unit	Seasonally adjusted data						
		Mar 2021	Apr 2021	Dec 2021	Jan 2022	Feb 2022	Mar 2022	Apr 2022 (p)
Active population		5,040.5	5,072.2	5,189.9	5,180.7	5,182.6	5,188.6	5,183.2
Employed population		4,703.1	4,719.7	4,886.2	4,881.7	4,889.3	4,889.2	4,882.7
Unemployed population	Thousands	337.3	352.4	303.7	299.0	293.3	299.4	300.4
Inactive population		2,635.0	2,604.2	2,495.8	2,483.0	2,480.2	2,473.1	2,477.4
Labour underutilisation		676.9	683.3	609.2	603.9	593.6	599.6	598.4
Activity rate		65.7	66.1	67.5	67.6	67.6	67.7	67.7
Employment rate		61.3	61.5	63.6	63.7	63.8	63.8	63.7
Unemployment rate	%	6.7	6.9	5.9	5.8	5.7	5.8	5.8
Inactivity rate		34.3	33.9	32.5	32.4	32.4	32.3	32.3
Labour underutilisation rate		12.9	13.0	11.4	11.3	11.1	11.2	11.2

Source: Statistics Portugal, Labour Force Survey.

Note: (p) – Provisional estimates.

In **March 2022**, from the previous month, the active population increased by 6.0 thousand people and the inactive population decreased by 7.1 thousand people². This happened in the active population due to the increase of the unemployed population (6.1 thousand; 2.1%), given that the employed population remained almost unchanged. Similarly, the change in the inactive population was explained by the decrease in the number of inactive persons who have not looked for a job nor were not available to work (5.8 thousand; 0.2%) and the number of inactive persons available to work, but who have not looked for a job (2.3 thousand; 1.8%).

The increase of the active population compared to three months before (1.3 thousand; which corresponds to a null relative change) came from the increase of the employed population (3.0 thousand; 0.1%) being lower than the increase of the unemployed population (4.3 thousand; 1.4%). The inactive population decreased from December 2021 (22.7 thousand; 0.9%) mainly due to the decrease in the number of inactive persons who have not looked for a job nor were not available to work (16.7 thousand; 0.7%).

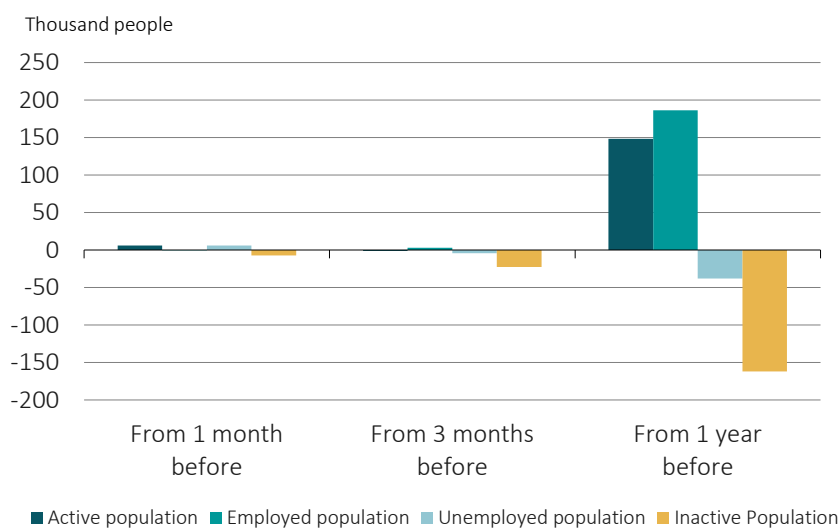
The increase of the active population (148.1 thousand; 2.9%) from March 2021 was followed by an increase of the employed population (186.1 thousand; 4.0%) that largely surpassed the decrease of the unemployed population (37.9 thousand; 11.2%). The inactive population decreased by 161.9 thousand people (6.1%), mainly due to the decrease in the number of inactive persons who have not looked for a job nor were not available to work (121.5 thousand; 5.0%).

² The changes in the active population and in the inactive population are not necessarily symmetrical. They are also influenced by the total population change that result from the natural balance and the net migration.



These results determined the following changes in the unemployment rate – that stood at 5.8% in March 2022: up 0.1 pp from the previous month, down 0.1 pp from three months before and down 0.9 pp from the same month of 2021.

Figure 1. Change in the active, employed, unemployed and inactive population in March 2022
(seasonally adjusted data)



Also in March 2022, the labour underutilisation covered 599.6 thousand people, having decreased from the previous month (6.0 thousand; 1.0%) and from three months before (9.6 thousand; 1.6%) and from one year before (77.3 thousand; 11.4%). The labour underutilisation rate was estimated at 11.2%, increased by 0.1 pp from the month before, having decrease from three months before and a year earlier (0.2 pp and 1.7 pp, respectively).

In **April 2022**, the estimated active population decreased from the previous month by 5.4 thousand people (0.1%) and the estimated inactive population increased by 4.3 thousand (0.2%). The decrease of the active population resulted from the reduction of the employed population by 6.5 thousand (0.1%), having the unemployed population increased by 1.0 thousand (0.3%). On the other hand, the inactive population increase was explained by the increase in the number of inactive persons who have not looked for a job nor were not available to work (7.3 thousand; 0.3%).

The slight increase of the active population from three months before (2.5 thousand; which corresponds to a null relative change) came from the slight increase of the employed population (1.0 thousand; which corresponds to a null relative change) and of the unemployed population (1.4 thousand; 0.5%). The inactive population decreased by 5.6 thousand (0.2%) due to the decrease in the number of inactive persons available but not seeking a job (8.8 thousand; 6.6%).

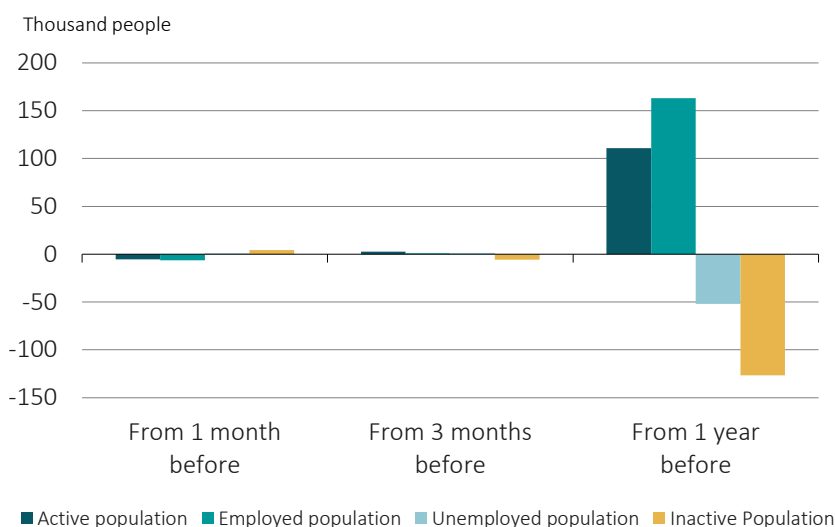
Finally, the active population increase (111.0 thousand; 2.2%) from April 2021 was followed by an increase of the employed population (163.0 thousand; 3.5%) that offset the decrease of the unemployed population



(52.0 thousand; 14.7%). The inactive population decreased by 126.8 thousand people (4.9%) due to the decrease in the number of inactive persons who have not looked for a job nor were not available to work (90.8 thousand; 3.8%) and the number of inactive persons available but not seeking a job (47.1 thousand; 27.4%)

These results determined the following changes in the unemployment rate which stood at 5.8%: the same value of the previous month and from three months before and down 0.1 pp from April of the same year.

Figure 2. Change in the active, employed, unemployed and inactive population in April 2022
(Seasonally adjusted data)



Note: The April 2022 estimates are provisional.

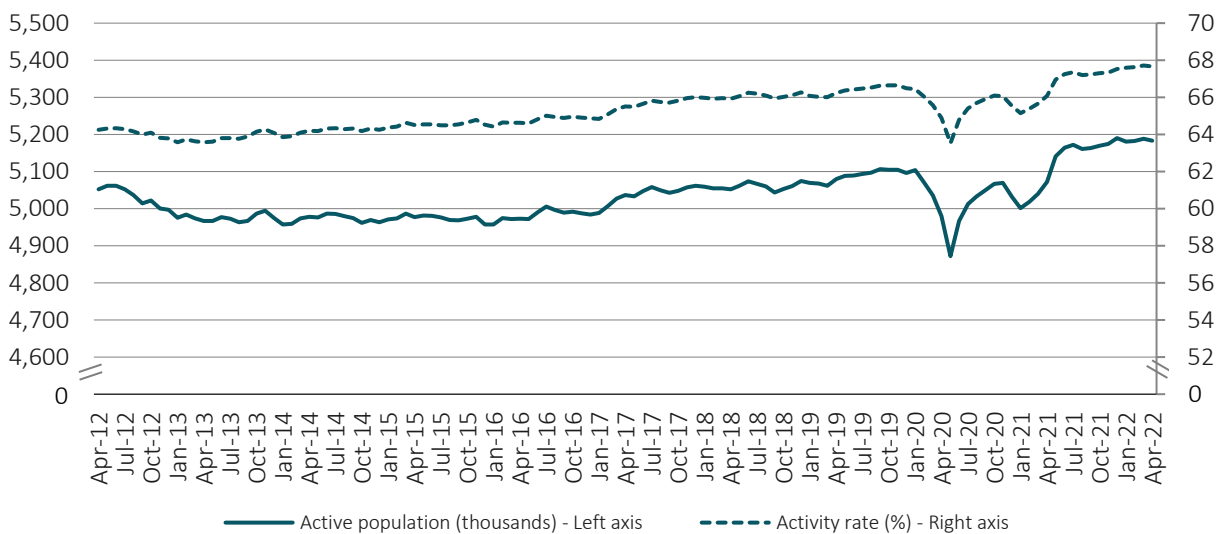
Also in April 2022, the labour underutilisation covered 598.4 thousand people, a lower number than in the previous month (1.2 thousand; 0.2%), than in three months before (5.5 thousand; 0.9%) and than in the same month of 2021 (84.9 thousand; 12.4%). The labour underutilisation rate was estimated at 11.2%, having remained unchanged from the previous month and decreased 0.1 pp from the three months before and 1.8 pp from the same month of last year.



The following figures present the evolution in the last 10 years of the main indicators analysed in this Press Release.

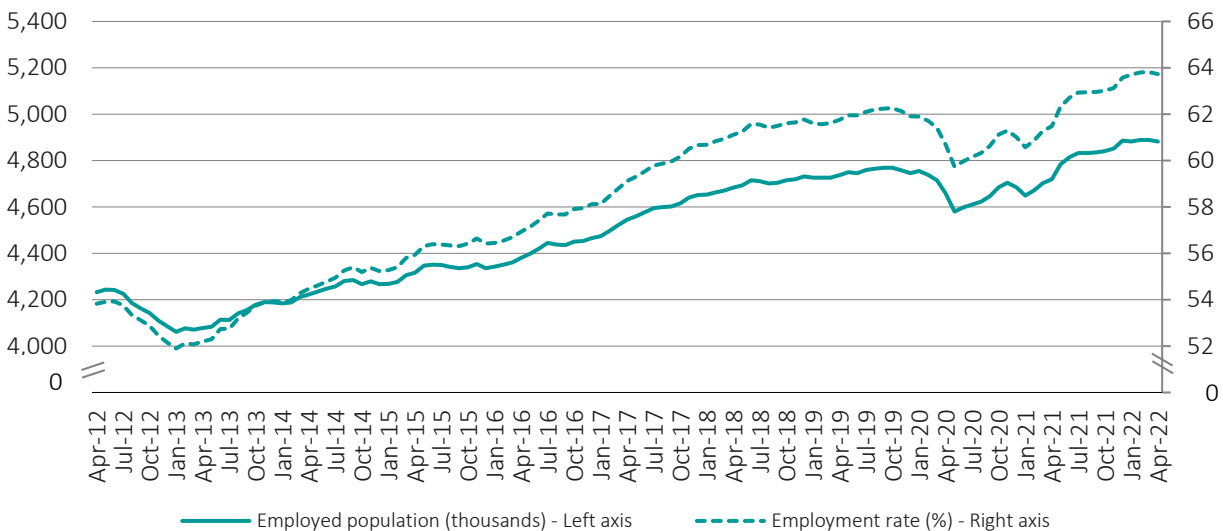
Despite the decrease observed in April 2022, the active population remained near the maximum of the past 10 years, recorded in December 2021 (5,189.9 thousand). The employment rate reached its highest value since February 1998 in March 2022 (63.8%).

Figure 3. Active population and activity rate
(seasonally adjusted data)



Note: The April 2022 estimates are provisional.

Figure 4. Employed population and employment rate
(seasonally adjusted data)

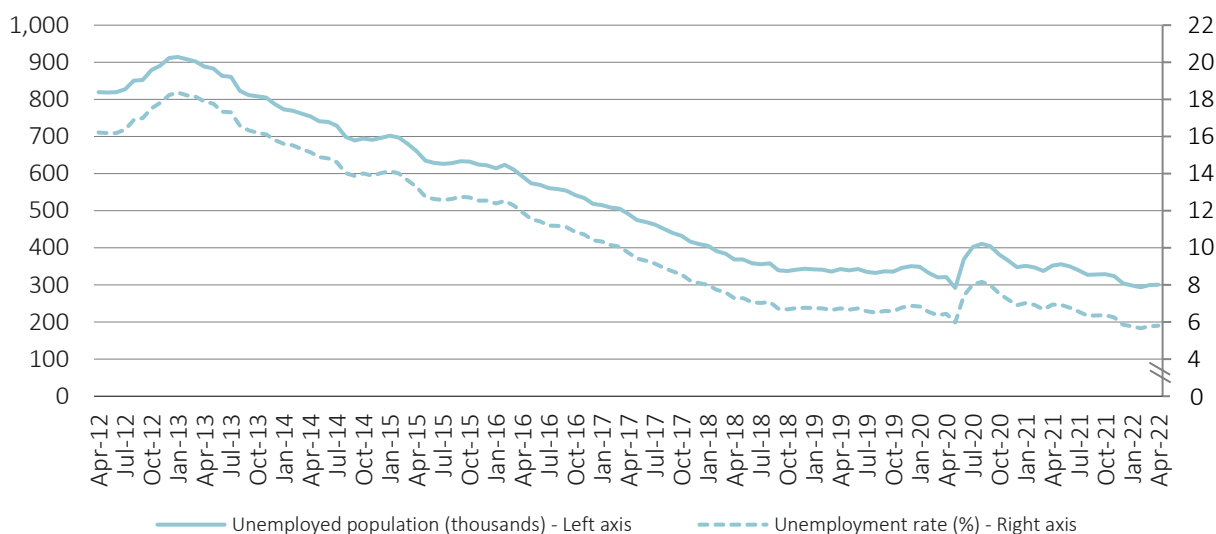


Note: The April 2022 estimates are provisional.



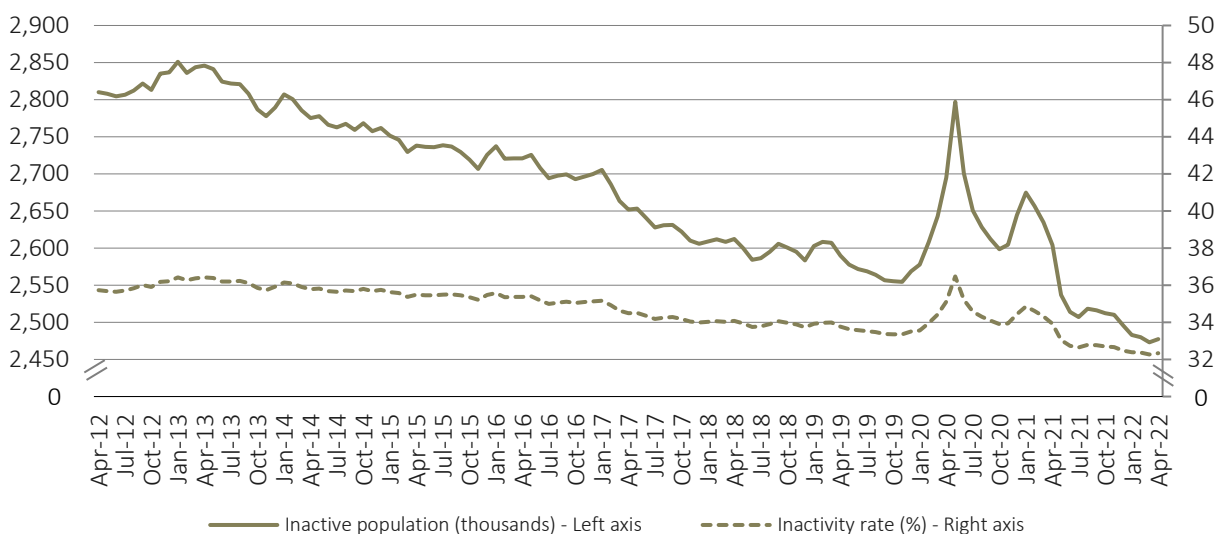
In February 2022, the unemployment rate stood at 5.7%, corresponding to its lowest value in the last 10 years. In the following month (March 2022), the inactive population recorded its lowest value since February 1998 (2,473.1 thousand people).

Figure 5. Unemployed population and unemployment rate
(seasonally adjusted data)



Note: The April 2022 estimates are provisional.

Figure 6. Inactive population and inactivity rate
(seasonally adjusted data)

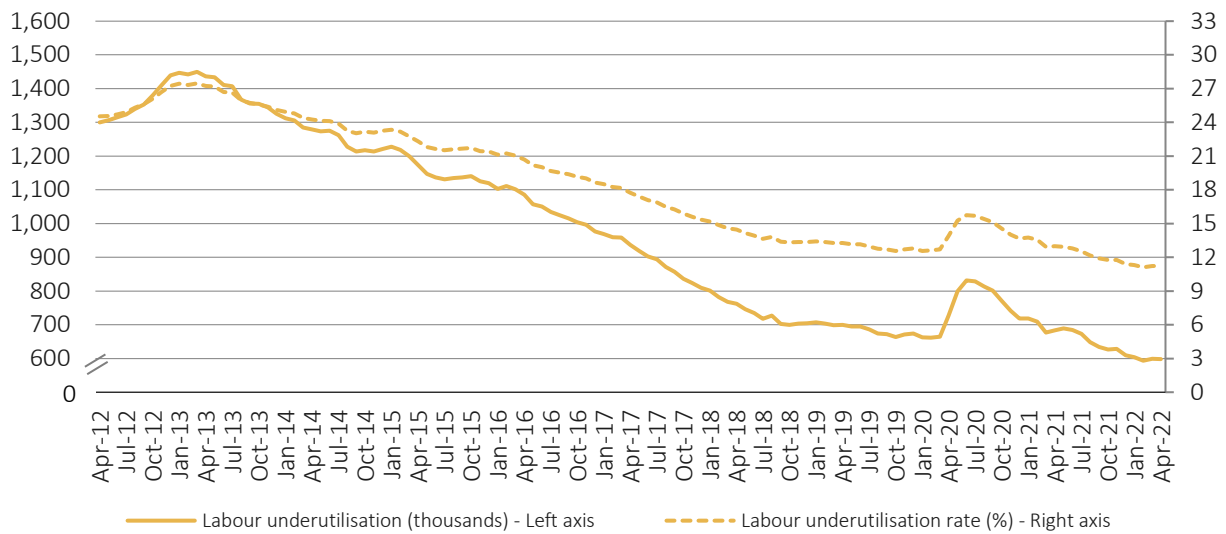


Note: The April 2022 estimates are provisional.



The labour underutilisation continued its downward trend, having reached in February 2022 its lowest value (593.6 thousand) since the beginning of the data series started in 2011, which was reflected in the underutilisation rate, which registered its lowest value also in that month (11.1%).

Figure 7. Labour underutilisation and labour underutilisation rate
(seasonally adjusted data)



Note: The April 2022 estimates are provisional.



Criteria used when classifying the population aged 16 to 74 by labour status

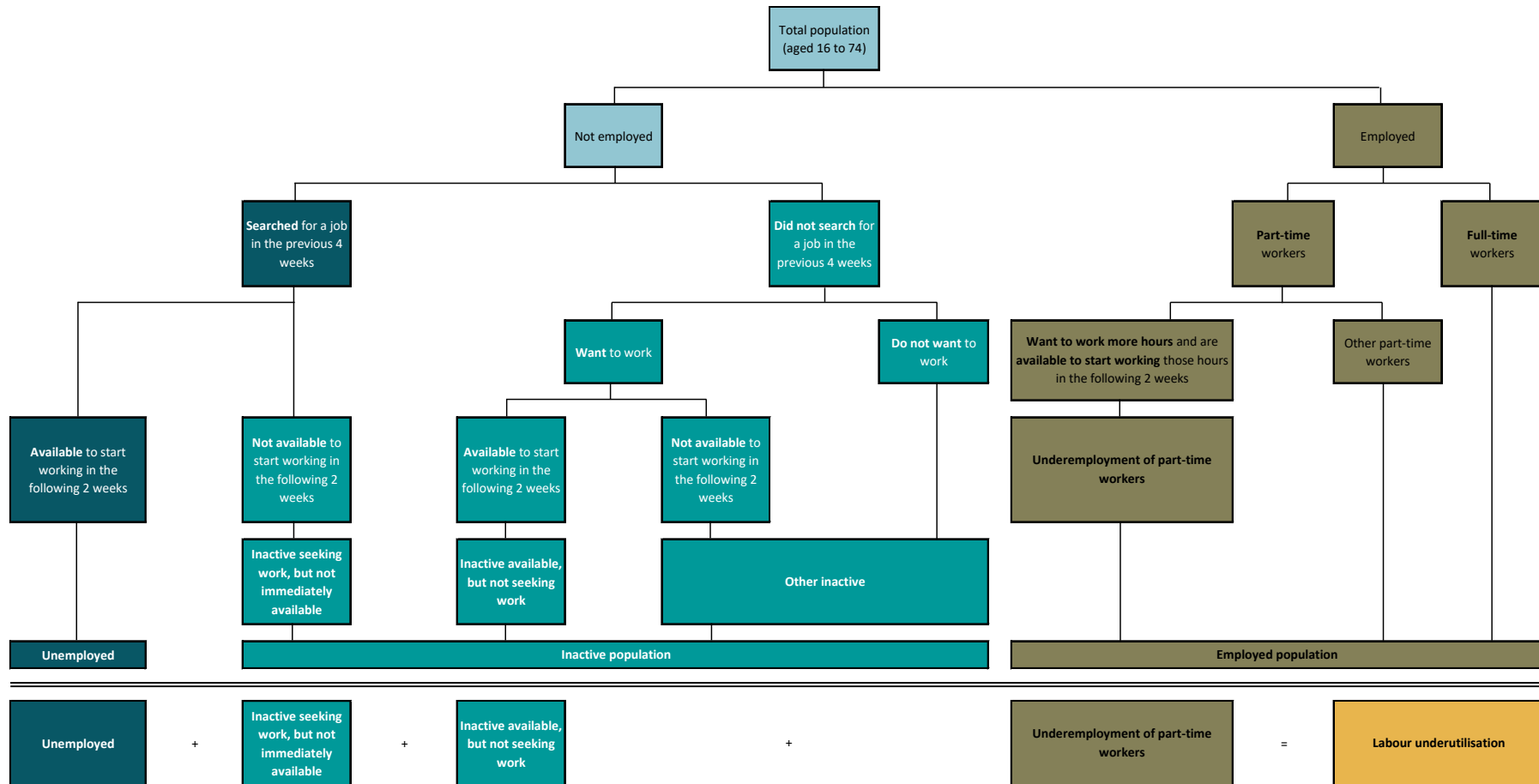




Table 1: Active population and active rate by sex and age group (16 to 74)

	Seasonally adjusted data					Not seasonally adjusted data				
	Apr 2021	Jan 2022	Feb 2022	Mar 2022	Apr 2022 (p)	Apr 2021	Jan 2022	Feb 2022	Mar 2022	Apr 2022 (p)
	Thousands									
Active population	5,072.2	5,180.7	5,182.6	5,188.6	5,183.2	5,063.0	5,179.9	5,180.9	5,184.3	5,171.8
Men	2,552.7	2,598.8	2,595.0	2,595.6	2,593.9	2,545.5	2,595.4	2,589.9	2,590.4	2,585.4
Women	2,519.5	2,582.0	2,587.6	2,593.0	2,589.3	2,517.6	2,584.5	2,591.1	2,593.9	2,586.4
Youth (aged 15 to 24)	322.5	320.5	323.3	326.3	331.2	315.9	318.0	319.1	320.5	323.4
Adults (aged 25 to 74)	4,749.7	4,860.3	4,859.3	4,862.4	4,852.0	4,747.1	4,861.9	4,861.8	4,863.8	4,848.4
	%									
Activity rate	66.1	67.6	67.6	67.7	67.7	66.0	67.6	67.6	67.7	67.5
Men	69.6	71.1	71.1	71.1	71.0	69.4	71.1	70.9	70.9	70.8
Women	62.8	64.4	64.5	64.7	64.6	62.8	64.4	64.6	64.7	64.5
Youth (aged 15 to 24)	32.5	32.4	32.7	33.1	33.6	31.8	32.2	32.3	32.5	32.8
Adults (aged 25 to 74)	71.1	72.8	72.8	72.8	72.7	71.0	72.8	72.8	72.9	72.6

Source: Statistics Portugal, Labour Force Survey.

Note: (p) – Provisional estimates.

Table 2: Employed population and employment rate by sex and age group (16 to 74)

	Seasonally adjusted data					Not seasonally adjusted data				
	Apr 2021	Jan 2022	Feb 2022	Mar 2022	Apr 2022 (p)	Apr 2021	Jan 2022	Feb 2022	Mar 2022	Apr 2022 (p)
	Thousands									
Employed population	4,719.7	4,881.7	4,889.3	4,889.2	4,882.7	4,709.4	4,866.5	4,872.5	4,876.4	4,871.2
Men	2,380.1	2,454.5	2,462.8	2,464.9	2,460.8	2,369.8	2,441.5	2,449.2	2,452.9	2,450.2
Women	2,339.6	2,427.2	2,426.6	2,424.3	2,421.9	2,339.6	2,425.0	2,423.2	2,423.5	2,421.0
Youth (aged 15 to 24)	244.1	254.5	258.6	259.6	265.4	241.2	250.5	253.3	255.8	262.2
Adults (aged 25 to 74)	4,475.7	4,627.3	4,630.8	4,629.6	4,617.4	4,468.2	4,616.1	4,619.2	4,620.6	4,608.9
	%									
Employment rate	61.5	63.7	63.8	63.8	63.7	61.4	63.5	63.6	63.6	63.6
Men	64.9	67.2	67.4	67.5	67.4	64.6	66.8	67.1	67.2	67.1
Women	58.3	60.5	60.5	60.5	60.4	58.3	60.5	60.4	60.4	60.4
Youth (aged 15 to 24)	24.6	25.8	26.2	26.3	26.9	24.3	25.4	25.7	25.9	26.6
Adults (aged 25 to 74)	67.0	69.3	69.4	69.4	69.2	66.8	69.1	69.2	69.2	69.1

Source: Statistics Portugal, Labour Force Survey.

Note: (p) – Provisional estimates.



Table 3: Unemployed population and unemployment rate by sex and age group (16 to 74)

	Seasonally adjusted data					Not seasonally adjusted data				
	Apr 2021	Jan 2022	Feb 2022	Mar 2022	Apr 2022 (p)	Apr 2021	Jan 2022	Feb 2022	Mar 2022	Apr 2022 (p)
	Thousands									
Unemployed population	352.4	299.0	293.3	299.4	300.4	353.6	313.4	308.4	308.0	300.7
Men	172.5	144.2	132.2	130.7	133.1	175.6	153.9	140.6	137.5	135.2
Women	179.9	154.8	161.1	168.7	167.4	178.0	159.5	167.8	170.4	165.5
Youth (aged 15 to 24)	78.4	66.0	64.7	66.7	65.8	74.7	67.5	65.8	64.8	61.2
Adults (aged 25 to 74)	274.0	233.0	228.6	232.8	234.6	278.9	245.9	242.6	243.2	239.5
	%									
Unemployment rate	6.9	5.8	5.7	5.8	5.8	7.0	6.0	6.0	5.9	5.8
Men	6.8	5.6	5.1	5.0	5.1	6.9	5.9	5.4	5.3	5.2
Women	7.1	6.0	6.2	6.5	6.5	7.1	6.2	6.5	6.6	6.4
Youth (aged 15 to 24)	24.3	20.6	20.0	20.4	19.9	23.6	21.2	20.6	20.2	18.9
Adults (aged 25 to 74)	5.8	4.8	4.7	4.8	4.8	5.9	5.1	5.0	5.0	4.9

Source: Statistics Portugal, Labour Force Survey.

Note: (p) – Provisional estimates.

Table 4: Inactive population and inactivity rate by sex and age group (16 to 74)

	Seasonally adjusted data					Not seasonally adjusted data				
	Apr 2021	Jan 2022	Feb 2022	Mar 2022	Apr 2022 (p)	Apr 2021	Jan 2022	Feb 2022	Mar 2022	Apr 2022 (p)
	Thousands									
Inactive population	2,604.2	2,483.0	2,480.2	2,473.1	2,477.4	2,613.3	2,483.8	2,481.9	2,477.4	2,488.8
Men	1,113.1	1,054.0	1,057.2	1,055.9	1,057.0	1,120.3	1,057.3	1,062.3	1,061.1	1,065.5
Women	1,491.1	1,429.0	1,423.0	1,417.2	1,420.4	1,493.0	1,426.5	1,419.6	1,416.3	1,423.3
Youth (aged 15 to 24)	669.7	667.5	664.2	660.6	655.0	676.3	670.0	668.4	666.3	662.8
Adults (aged 25 to 74)	1,934.4	1,815.4	1,816.0	1,812.6	1,822.4	1,937.0	1,813.8	1,813.5	1,811.1	1,826.0
	%									
Inactivity rate	33.9	32.4	32.4	32.3	32.3	34.0	32.4	32.4	32.3	32.5
Men	30.4	28.9	28.9	28.9	29.0	30.6	28.9	29.1	29.1	29.2
Women	37.2	35.6	35.5	35.3	35.4	37.2	35.6	35.4	35.3	35.5
Youth (aged 15 to 24)	67.5	67.6	67.3	66.9	66.4	68.2	67.8	67.7	67.5	67.2
Adults (aged 25 to 74)	28.9	27.2	27.2	27.2	27.3	29.0	27.2	27.2	27.1	27.4

Source: Statistics Portugal, Labour Force Survey.

Note: (p) – Provisional estimates.



Table 5: Labour underutilisation and labour underutilisation rate (16 to 74)

	Seasonally adjusted data					Not seasonally adjusted data				
	Apr 2021	Jan 2022	Feb 2022	Mar 2022	Apr 2022 (p)	Apr 2021	Jan 2022	Feb 2022	Mar 2022	Apr 2022 (p)
	Thousands									
Labour underutilisation	683.3	603.9	593.6	599.6	598.4	675.8	634.6	618.2	614.0	598.2
Unemployed population	352.4	299.0	293.3	299.4	300.4	353.6	313.4	308.4	308.0	300.7
Underemployed part-time workers	142.3	144.3	143.4	144.7	145.3	135.0	148.1	144.0	146.0	142.3
Persons seeking work but not immediately available	17.2	27.4	28.3	29.4	28.3	17.2	27.4	28.3	29.4	28.3
Persons available to work but not seeking	171.4	133.1	128.5	126.2	124.3	170.1	145.7	137.4	130.6	126.8
	%									
Labour underutilisation rate	13.0	11.3	11.1	11.2	11.2	12.9	11.9	11.6	11.5	11.2

Source: Statistics Portugal, Labour Force Survey.

Note: (p) – Provisional estimates.



METHODOLOGICAL NOTE

LABOUR FORCE SURVEY

The main purpose of the Labour Force Survey is to characterise the population in terms of the labour market. It is a quarterly sample survey, addressed to families occupying the same dwelling in the national territory, which makes available quarterly and annual data.

Most of the characteristics observed in this survey report to the situation in one pre-defined week (from Monday to Sunday), known as reference week. The reference weeks are uniformly distributed throughout the quarters and years. The interviews usually take place in the week following the reference week.

The information is obtained directly, through computer-assisted interview. Until the first fortnight of March 2020, the data were collected by using a mixed data collection mode: the initial interview is done face-to-face by an interviewer visiting the household and the other five interviews are done by telephone if certain requirements are met. Following the COVID-19 pandemic and the measures adopted by the competent authorities, Statistics Portugal has decided, as of that date and until further notice, to suspend the face-to-face collection mode, replacing it exclusively with the telephone interview one.

Published data were calibrated by using the population estimates calculated from the final results of Census 2011.

MONTHLY EMPLOYMENT AND UNEMPLOYMENT ESTIMATES

In 2014, Statistics Portugal initiated a monthly release of Labour Force Survey estimates for the main labour market indicators in addition to the usual quarterly estimates' releases.

With this initiative, Statistics Portugal intends to provide to users monthly updated information on labour market recent developments, allowing, at the same time, a more complete reading picture than that provided so far by Eurostat in its monthly releases of the unemployed population and unemployment rate estimates for Portugal. With this dissemination, Statistics Portugal also satisfies a specific requirement from the PEEIs (Principal European Economic Indicators).

Taking advantage of the continuous nature of the Labour Force Survey collection process, it is possible to monthly obtain estimates related to successive sets of three months (moving quarters), assuring consistency with the quarterly released estimates.

The monthly estimates refer to centred moving quarters, where the reference month (m) corresponds to the central month of each moving quarter. In fact, the reference month of each Press Release corresponds to the central month of the quarter composed by m-1, m and m+1 months. Therefore, the monthly changes are calculated on values that contain common months. Therefore, the comparison of moving quarters without common months should be done in relation to reference months three months earlier.



The option for disseminating centred moving quarters series aimed at avoiding delays in the detection of turning points in the economic cycle that arise from the use of simple moving averages, but it implies that the estimates for the latest released moving quarter are provisional (see “Revisions” section below).

As estimates of centred moving quarters, the values (not seasonally adjusted) of the reference months February, May, August and November of each year correspond to the estimates of the 1st, 2nd, 3rd and 4th natural quarters, respectively, whose results are published and analysed with greater detail in the quarterly releases of the Labour Force Survey estimates.

The estimates for the last reference month are always provisional, as they correspond to a moving quarter where for the third month the data collection is not completed yet. In fact, for the first two months ($m-1$ and m) the data collection from the Labour Force Survey is already completed, while for the third month ($m+1$) only partially collected data are available.

In this context, in each monthly Press Release the provisional estimates for the reference month and the revised estimates for the previous months are published, due the availability of complete information for the last moving quarter.

INFORMATION AVAILABLE

The data series selected for monthly releases refer to both employed and unemployed population, by sex and age group, and to the corresponding rates. In relation to these data series, it should be noted the following:

- Unless otherwise stated, the data series analysed in this Press Release are seasonally adjusted. For this reason, the analysis focuses on the comparison with the most recent periods. As agreed, Eurostat started using these estimates in its unemployment monthly releases. The original data series (not seasonally adjusted; as in the Statistics Portugal quarterly releases), are available in Tables of the annex.
- The indicators analysed in this Press Release were calculated for the age subgroup of those aged 16 to 74 (as in the Eurostat News Release), which differs from the criterion adopted at the Statistics Portugal quarterly releases (people aged 16 to 89, in line with the concepts in force of the International Labour Organization).

The back series for all the released and analysed indicators in this Press Release, since February 1998 (quarter from January to March 1998), are available at the Statistics Portugal website and the links to them can be found in the Excel file released together with this Press Release.

Due to rounding, totals may not correspond exactly to the sum of the parts.

REVISIONS

The monthly released data are subject to regular revisions, as previously mentioned. The revisions come from obtaining the final estimates for the previous reference month (moving quarter) due to the conclusion of its last month collection process. Therefore, in each Press Release the not seasonally adjusted final estimates for the previous reference month are published. In addition, are also presented the final estimates resulting from updating of the seasonally adjusted data series whenever a new observation is added.



Revision of March 2022 estimates (16 to 74)

- main indicators -

	Unit	Seasonally adjusted data	Not seasonally adjusted data
Active population		4.0	0.0
Employed population		3.2	0.0
Unemployed population	Thousands	0.8	0.0
Inactive population		- 4.0	0.0
Labour underutilisation		3.4	0.0
Employment rate		0.0	0.0
Unemployment rate		0.1	0.0
Men's unemployment rate		0.0	0.0
Women's unemployment rate	pp	0.0	0.0
Youth unemployment rate (16 to 24)		- 0.2	0.0
Adults' unemployment rate (25 to 74)		0.0	0.0
Labour underutilisation rate		0.0	0.0

SOME CONCEPTS

Unemployed: person aged 16 and 74 who during the reference period met simultaneously the following conditions:

- neither had a job nor was at work;
- had actively sought work, i.e., had actively searched for a paid or unpaid job during the specified period (reference period or the three previous weeks); and
- was available for a paid or unpaid job.

Employed: person aged 16 to 89 who, during the reference period, was in one of the following situations:

- worked for at least one hour for a wage or salary, in cash or in kind (including unpaid family work);
- had a formal attachment to his/her job but was not at work temporarily;
- was in early retirement but working in the reference week.

Working age resident population: Resident population aged 16 to 89.

Active: person aged 16 to 89 who, during the reference period, furnish the supply of labour force for the production of economic goods and services (was employed or unemployed).

Labour force: population formed by all active persons.

Extended labour force: corresponds to the labour force enlarged by the inactive seeking work but not immediately available and the inactive available but not seeking work.



Labour underutilisation: indicator that aggregates the unemployed population, the underemployment of part-time workers, the inactive seeking work but not immediately available, and the inactive available but not seeking work.

Unemployment rate: rate that defines the relation between the unemployed population and the labour force.

$$\text{U.R. (\%)} = (\text{Unemployed population} / \text{Labour force}) \times 100$$

Employment rate: rate that defines the relation between the employed population and the working age population.

$$\text{E.R. (\%)} = (\text{Employed population} / \text{Working age population}) \times 100$$

Activity rate of the working age population: rate that defines the relation between the labour force and the working age population.

$$\text{A.R. (\%)} = (\text{Labour force} / \text{Working age population}) \times 100$$

Inactivity rate of the working age population: rate that defines the relation between the working age inactive population and the working age population.

$$\text{I.R. (\%)} = (\text{Working age inactive population} / \text{Working age population}) \times 100$$

Labour underutilisation rate: rate that defines the relation between the labour underutilisation and the extended labour force.

$$\text{L.U.R. (\%)} = (\text{Labour underutilisation} / \text{Extended labour force}) \times 100$$

For the indicators selected for monthly dissemination, it was considered the age subgroup of those aged 16 to 74.

Para For a more detailed definition of the concepts and methodological features of this statistical operation, consult the [Labour Force Survey](#) or the [Monthly Employment and Unemployment Estimates](#) methodological documents (both only in Portuguese) available at the Statistics Portugal website.

Next Press Release

29 June 2022: “Monthly Employment and Unemployment Statistics – May 2022”.

30 June 2022: Eurostat News Release.
