



Maio 13th 2022

VITAL STATISTICS – Monthly data

April 2022

MORTALITY, LIVE BIRTHS AND MARRIAGES

NUMBER OF LIVE BIRTHS DECREASED 1.2% COMPARED TO MARCH 2021

In April 2022, the number of deaths was 10,120, lower than that registered in March 2022 (661 fewer deaths; -6.1%) and higher than that observed in April 2021 (1,694 more deaths; +20.1%). The number of deaths due to COVID-19 was 590, accounting for 5.8% of all deaths. The number of deaths due to COVID-19 decreased compared to March 2022 (55 less deaths) and increased compared to April 2021 (473 more deaths).

In March 2022, 6,573 children were born alive, corresponding to a reduction of 1.2%, compared to the same month of 2021.

In March 2022, the natural balance was -4,177, having increased compared to the same month of 2021, when it recorded the value of -2,956.

The number of marriages celebrated in March 2022 was 1,680, corresponding to 3.8 times the number of marriages celebrated in March 2021 (1,236 more marriages).

In this press release, Statistics Portugal provides **preliminary data** regarding the number of deaths, per month until April 2022 and per week until the 17th week of 2022 (Abril 25th to May 1st, 2022), and the number of live births and marriages per month until March 2022, that occurred in the national territory, making a comparison with the same period of the last year. Indicators on the preliminary monthly number of live births, deaths, and marriages, from January to February 2022, with geographical breakdowns up to NUTS 3, as well as weekly number of deaths, until the 17th week of 2022, by NUTS 3 and daily number of deaths, until May 1st, by NUTS 2 are made available on the Statistics Portugal Website.

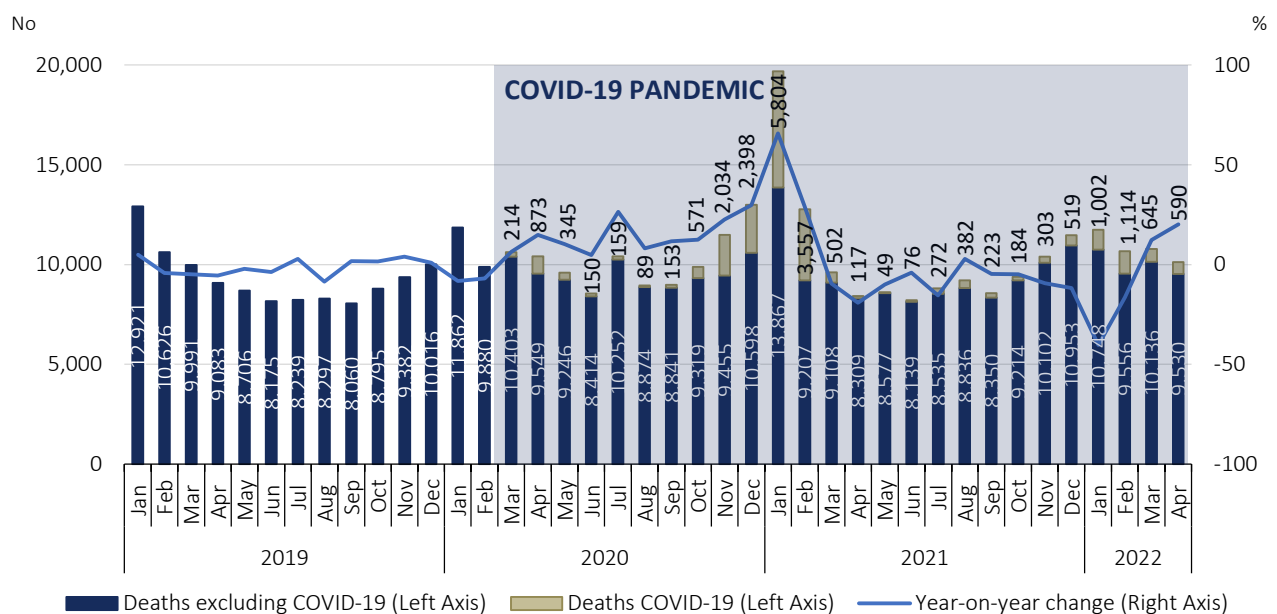
The information is obtained through the Civil Register collected under the Integrated Civil Registration and Identification System (SIRIC) until May 10th, 2022.

The data presented regarding the number of deaths due to COVID-19, whose source is the Directorate-General for Health (report “Number of New Cases and Deaths Per Day”), were extracted on May 5th, 2022.

In April 2022, mortality increased by 20.1% when compared to the same month of 2021

In April 2022, the number of deaths was 10,120, 661 fewer deaths than in the previous month. Compared to the same month of 2021, the number of deaths increased by 20.1% (1,694 more deaths). The number of deaths due to COVID-19 decreased to 590 (55 less deaths compared with March 2022), accounting for 5.8% of all deaths. Compared with April 2021, there was an increase of 473 deaths due to COVID-19.

Figure 1: Deaths and year-on-year change, January 2019 to April 2022

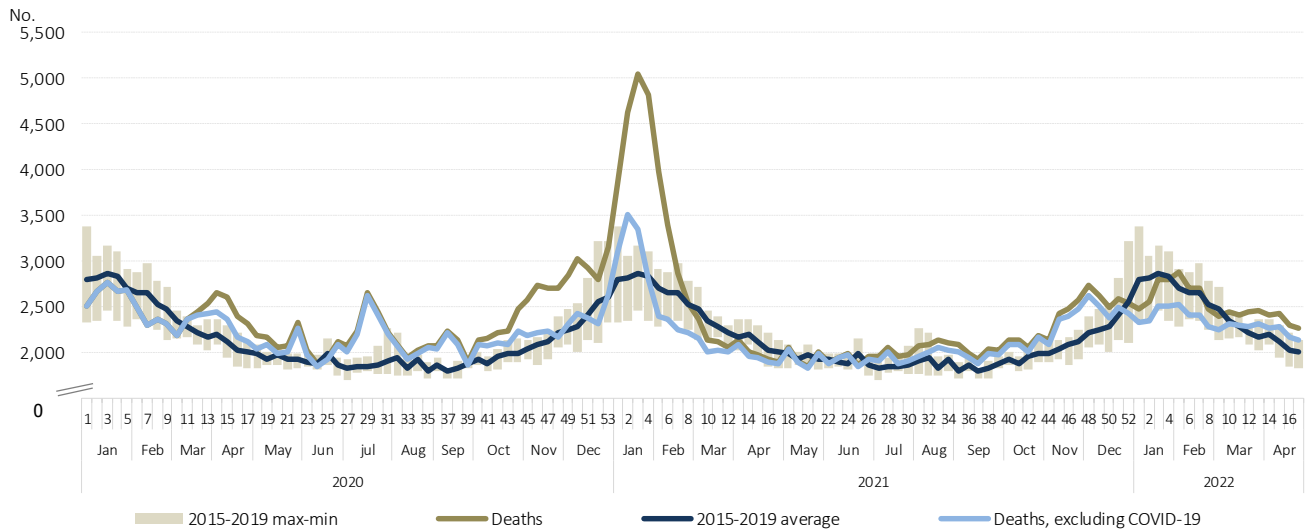


Source: Statistics Portugal, Deaths. Directorate-General of Health, [Number of New Cases and Deaths Per Day](#) (extracted on 5/05/2022).

Between January 31st and February 20th, 2022 (weeks 5 to 7), the number of deaths was higher than the average of the 5 years before the pandemic. Between February 21st and March 6th (weeks 8 and 9), the number of deaths returned to figures below the 2015-2019 average, as had already been registered in the last week of 2021 and the first four weeks of 2022. From March 7th to May 1st (weeks 10 to 17), the number of deaths was again above the average for the reference period (2015-2019).

In the 17th week of 2022 (April 25th to May 1st), there were 2,255 deaths, of which 127 were due to COVID-19, accounting for 5.6% of all deaths.

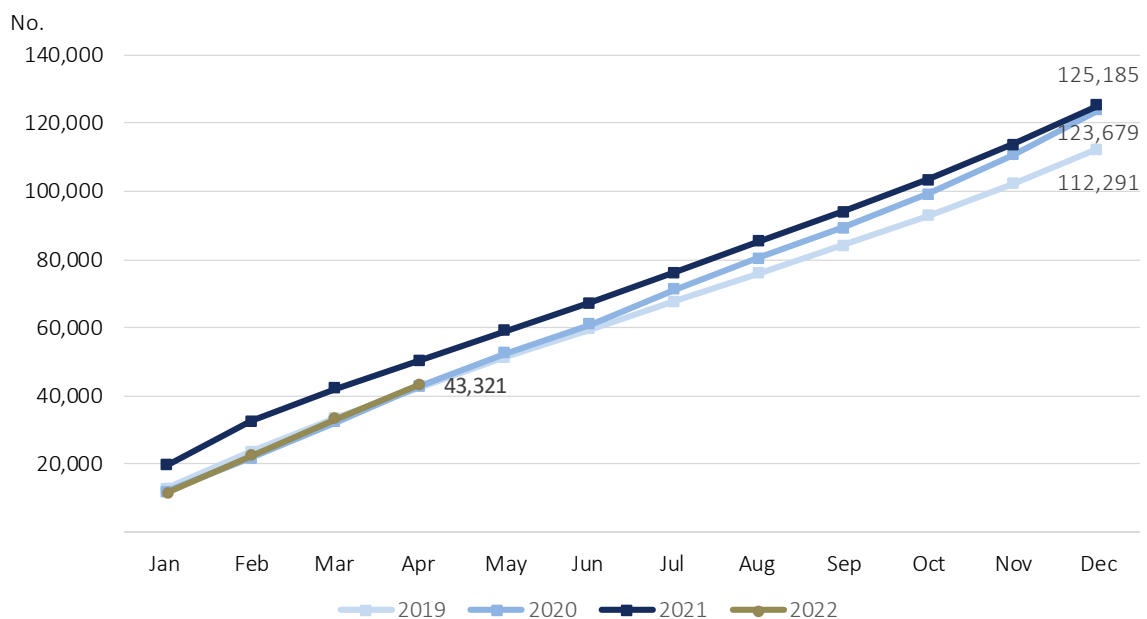
Figure 2: Deaths 2020, 2021, 2022 and average 2015-2019, by week, weeks 1 of 2020 to 17 of 2022



Source: Statistics Portugal, Deaths. Directorate-General of Health, [Number of New Cases and Deaths Per Day](#) (extracted on 5/05/2022).

From January to April 2022, there were 43,321 deaths, 7,150 fewer deaths than in the same period of 2021 (-14.2%).

Figure 3: Monthly deaths (cumulative numbers), 2019, 2020, 2021 and 2022



Source: Statistics Portugal, Deaths.



The “excess mortality” indicator calculated by Eurostat, which compares the number of deaths recorded each month, in the European Union (EU-27) and EFTA countries, with the average number of monthly deaths in the period 2016-2019, reached a new peak in November 2021, in the EU-27 countries and in Portugal, respectively, of 26.4% and 14.1%. In December 2021, excess mortality decreased slightly and again in January 2022. In this month, Portugal did not record excess mortality. In February 2022, excess mortality in the EU-27 increased slightly (to 7.4%), and Portugal, despite remaining below the value of the EU-27, again had excess mortality (4.0%).

Figure 4: Monthly excess mortality in EU-27 and EFTA countries by month, October 2021 to February 2022

(2016-2019 average = 100)

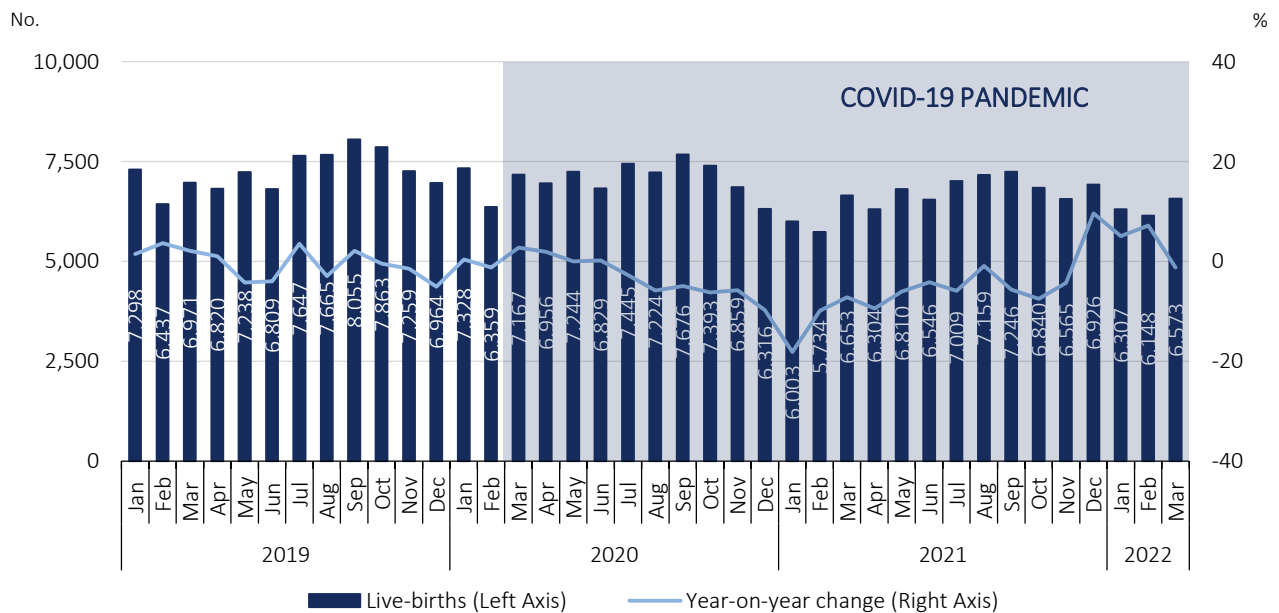
Countries	2021			2022	
	October	November	December	January	February
EU 27	118.1	126.4	123.4	107.2	107.4
Austria	112.6	134.8	119.8	97.5	102.7
Belgium	111.4	116.9	113.3	99.0	99.7
Bulgaria	174.3	188.9	143.3	124.8	144.1
Croatia	122.6	160.4	144.8	118.2	122.1
Cyprus	119.2	121.7	123.5	130.2	122.7
Czechia	108.8	143.4	140.8	104.3	103.8
Denmark	113.9	114.0	117.7	110.4	106.7
Estonia	127.6	140.5	123.6	107.8	119.4
Finland	112.7	114.7	105.6	107.4	107.5
France	107.6	107.2	114.9	110.0	107.3
Germany	112.0	122.7	123.1	102.6	98.0
Greece	118.0	131.3	132.1	120.3	124.9
Hungary	110.3	151.2	140.3	101.7	104.2
Ireland	114.2	116.3	105.8	95.8	102.6
Italy	105.7	106.3	110.2	105.5	104.8
Latvia	151.3	155.7	118.6	105.8	111.7
Lithuania	141.9	135.8	128.0	105.3	109.3
Luxembourg	109.3	117.9	116.7	100.9	105.9
Malta	112.0	112.7	118.8	109.7	x
Netherlands	114.7	135.0	131.2	99.1	98.2
Poland	114.6	151.0	169.2	124.4	114.9
Portugal	107.9	114.1	106.6	95.6	104.0
Romania	210.6	169.2	109.9	102.4	128.3
Slovakia	127.0	173.0	164.4	108.3	106.8
Slovenia	119.0	151.0	126.1	103.0	114.8
Spain	104.9	109.7	110.9	106.6	106.2
Sweden	100.1	102.8	104.4	104.4	106.2
Iceland	85.9	108.8	130.3	x	x
Liechtenstein	80.9	107.4	113.3	134.3	x
Norway	111.2	120.3	116.4	97.9	105.2
Switzerland	107.1	116.5	125.7	103.5	101.7

Source: Eurostat, [Excess mortality – monthly data](#) (extracted on 5/05/2022).

In March 2022, the number of live births decreased 1.2% compared to the same month of 2021

In February 2022, 6,148 children were born alive, corresponding to an increase of 7.2% (414 more) compared to February 2021. In March 2022, 6,573 children were born alive, representing a reduction of 1.2% (80 less) compared to the same month of the previous year.

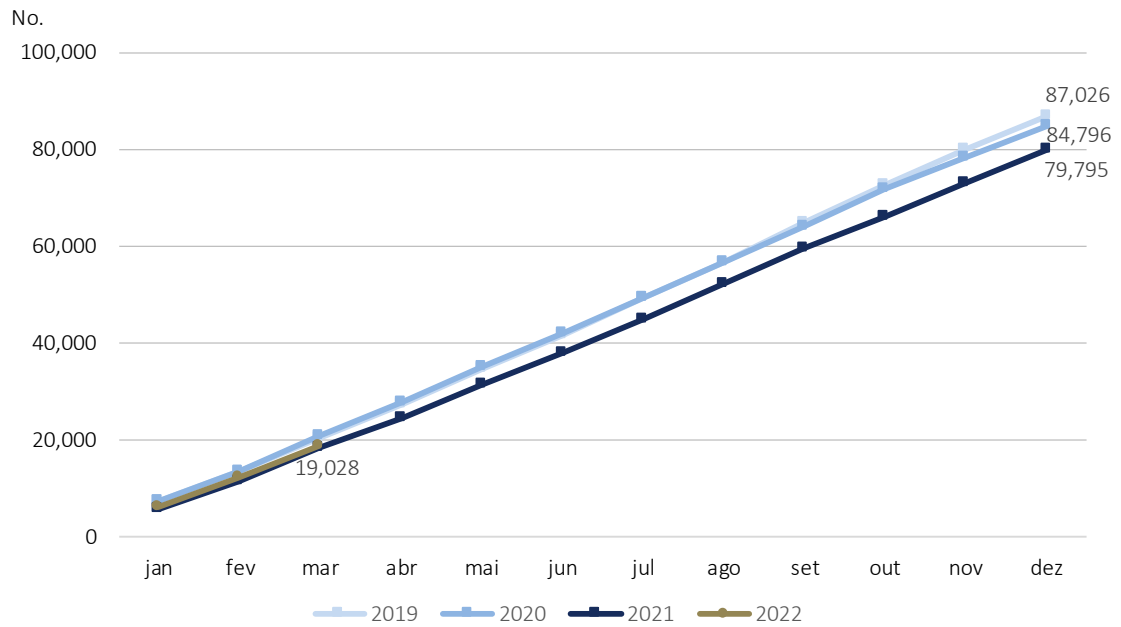
Figure 5: Live births and year-on-year change, January 2019 to March 2022



Source: Statistics Portugal, Live births.

The total number of live births registered in the first quarter of 2022 (19,028) was higher than that observed in the same period of 2021 (18,390), representing 638 more (3.5 %) live births.

Figure 6: Monthly live births (cumulative numbers), 2019, 2020, 2021 and 2022

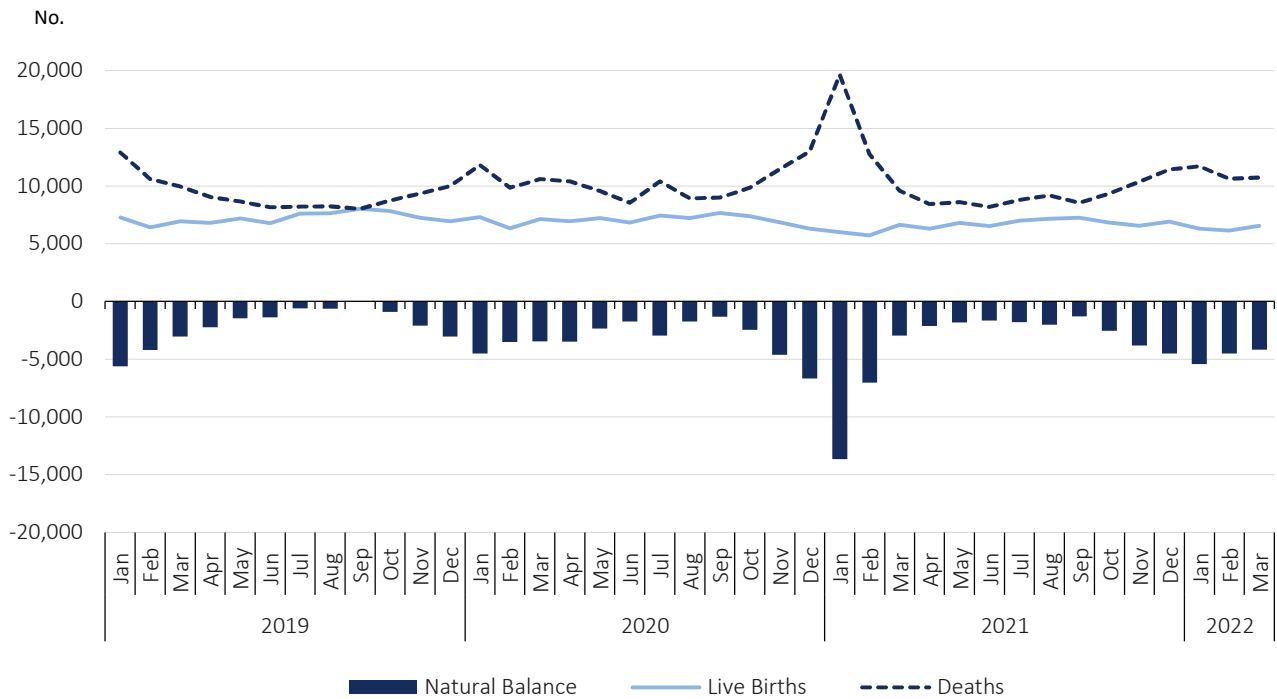


Source: Statistics Portugal, Live births.

In March 2022, the natural balance was -4,177

In February and March 2022, the natural balance registered, respectively, values of -4,502 and -4,177. The value of the natural balance recorded in March worsened compared to that registered in the same month of 2021 (-2,956).

Figure 7: Live births, deaths, and natural balance¹, January 2019 to March 2022

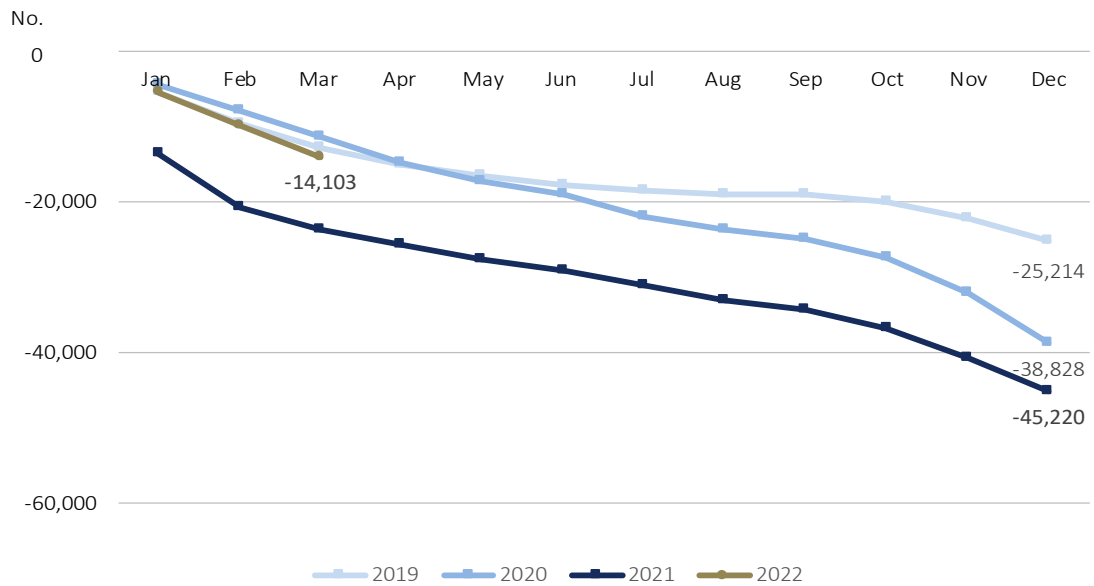


Source: Statistics Portugal, Live births, Deaths, and Demographic indicators.

In the first quarter of 2022, the accumulated value of the natural balance was -14,103, improving the figure observed in the same period of 2021 (-23,641).

¹ The natural balance is calculated based on the number of live births of mothers residing in Portugal and the number of deaths of residents in Portugal.

Figure 8: Monthly natural balance (cumulative numbers), 2019, 2020, 2021 and 2022

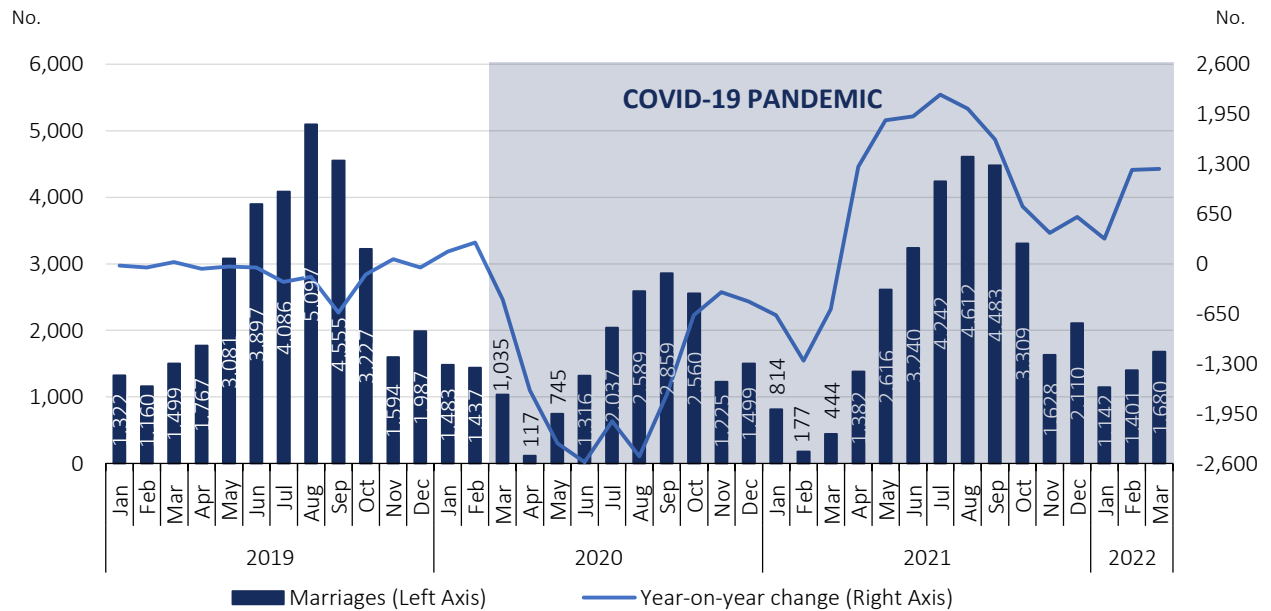


Source: Statistics Portugal, Live births, Deaths, and Demographic indicators.

In March 2022, 1,236 more marriages were celebrated than in March 2021

In February and March 2022, 1,401 and 1,680 marriages, respectively, were celebrated, corresponding to 7.9 and 3.8 times the number of marriages celebrated in February and March 2021 (1,224 and 1,236 more marriages).

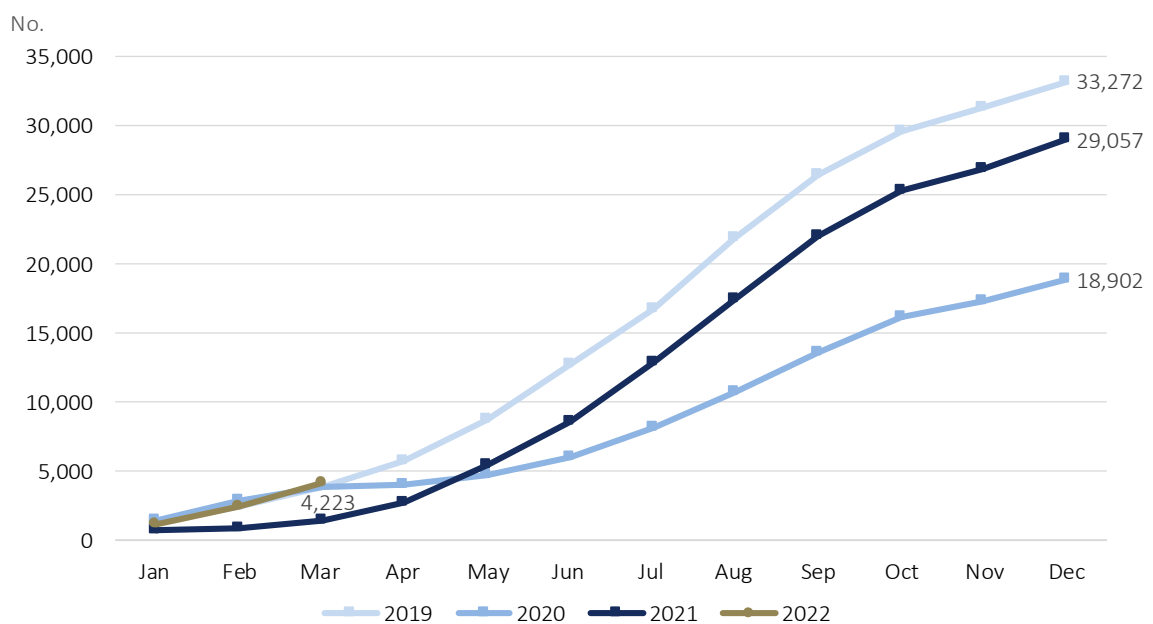
Figure 9: Marriages and year-on-year change, January 2019 to March 2022



Source: Statistics Portugal, Marriages.

From January to March 2022, 4,223 marriages were celebrated, 2,788 more than in the same period of 2021, and, respectively, 242 and 268 more than in the same months of 2019 and 2020.

Figure 10: Monthly marriages (cumulative numbers), 2019, 2020, 2021 and 2022



Source: Statistics Portugal, Marriages.



TECHNICAL NOTE

Statistics Portugal releases the **preliminary** monthly **numbers** of deaths, live births, and marriages based on the information registered in the Civil Register Offices until May 10th, 2022. Indicators on the preliminary monthly number of live births, deaths, and marriages, from January to February 2022, with geographical breakdowns up to NUTS 3, as well as weekly number of deaths, until the 17th week 2022, by NUTS 3 and daily number of deaths, until May 1st by NUTS 2 are made available on the Statistics Portugal Website. In this Press Release the total **preliminary figures** of live births and marriages are disclosed for the month of March 2022.

Data are obtained from statistical operations of direct and exhaustive collection on live births, deaths and marriages in Portuguese territory using facts that are subject to compulsory civil registration (birth and death) in the Sistema Integrado do Registo e Identificação Civil (SIRIC).

In addition to administrative information obtained from Civil Register Offices, Statistics Portugal collects an additional set of variables identified as statistically pertinent to the National Statistic System (NSS) and the European Statistical System (EES). Data is recorded and sent electronically, in compliance with the requirements set out by Statistics Portugal and laid down in liaison with the Instituto de Registos e Notariado (IRN) and the Instituto de Gestão Financeira e Equipamentos da Justiça (IGFEJ).

Data on the number of deaths due to COVID-19 are also used, whose source is the “Number of New Cases and Deaths Per Day” Report of the Directorate-General for Health.

DEFINITIONS

Marriage: Contract signed by two persons that intend to start a family in full partnership and cohabitation according to legislation. Note: marriage can be held between persons from different or same sex.

Live birth: This is the complete expulsion or extraction from the mother's body, irrespective of the duration of the pregnancy, of a product of fertilization that, after separation, breathes or shows any other signs of life, such as a beating of the heart or umbilical cord or actual contraction of any muscle subject to voluntary movement, whether the umbilical cord has been severed and whether the placenta is retained.

Death: The permanent disappearance of vital functions.

Natural balance: The difference between the number of live births and the number of deaths during a given period, usually a calendar year.

Year-on-year change: The year-on-year change compares the level of a variable between the reference month and the same month of the previous year.

Detailed methodological information available at: www.ine.pt, option Products, Metadata system.

Detailed statistical information available at: www.ine.pt, option Products, Statistical data, database, theme Population, subtheme Births and natality rates and subtheme Mortality and life expectancy.