



12 April 2022

INDICES OF PRODUCTION, EMPLOYMENT AND WAGES IN CONSTRUCTION

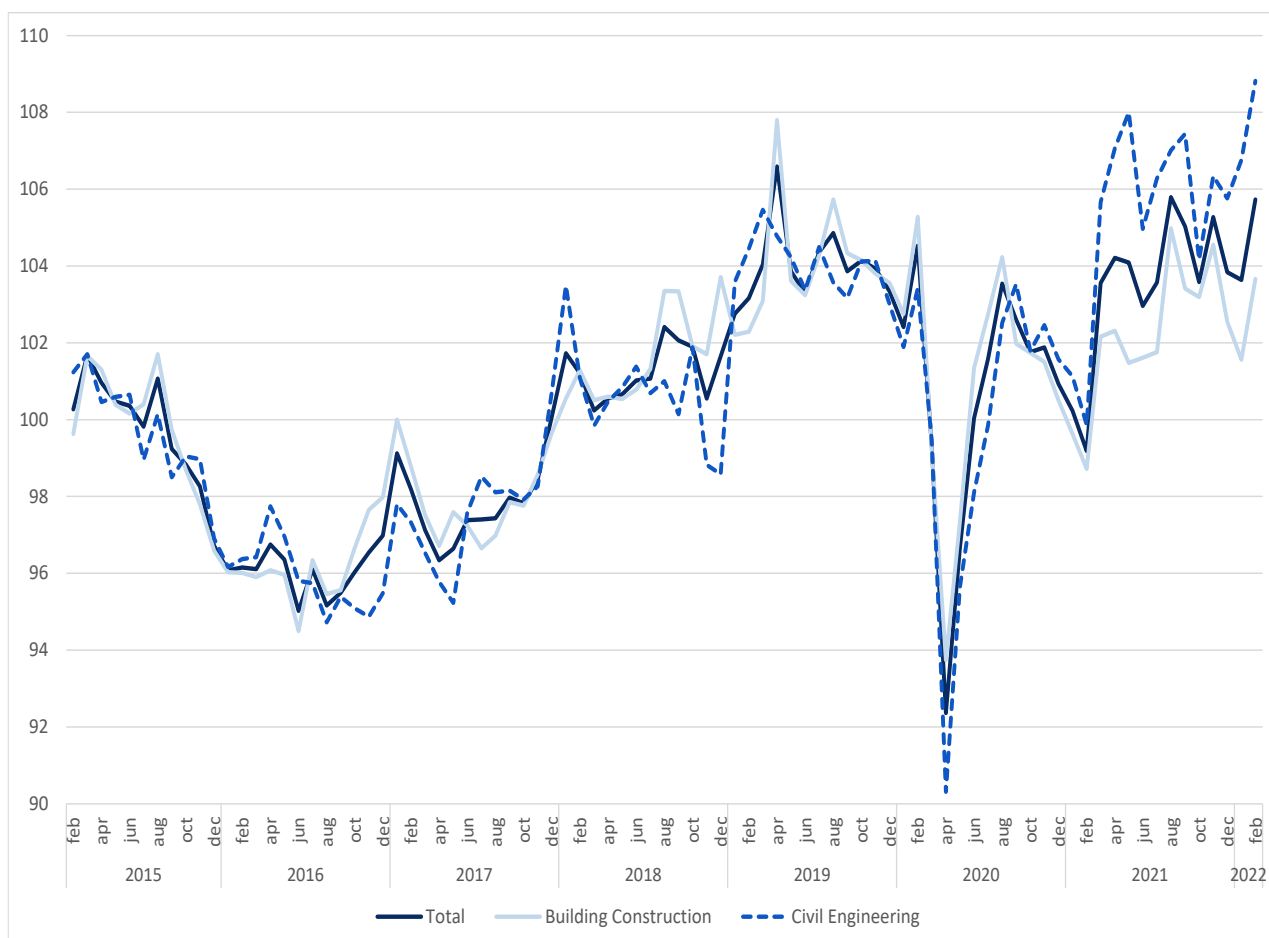
February 2022

CONSTRUCTION PRODUCTION INDEX GREW 4.3%

The index of production in construction increased 4.3% in year-on-year terms, in February (3 months moving average, working days and seasonally adjusted), up by 1.1 percentage points from January.

Employment and wages and salaries grew 1.9% and 6.5% (2.1% and 6.2% in the previous month), respectively.

Figure 1. Indices of Production in Construction (2015=100)



Next press release – May 12th 2022