



11 February 2022

INDICES OF PRODUCTION, EMPLOYMENT AND WAGES IN CONSTRUCTION

December 2021

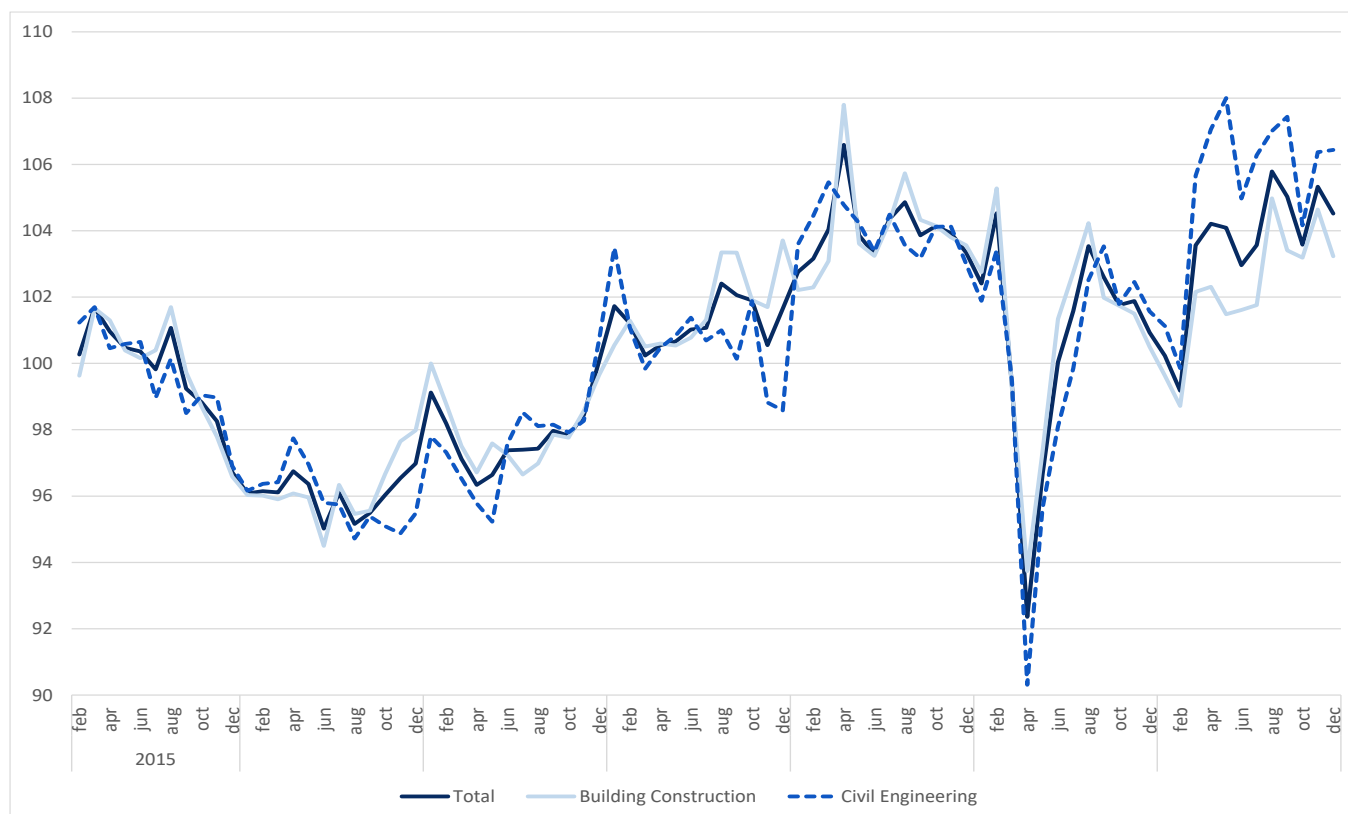
CONSTRUCTION PRODUCTION INDEX GREW UP TO 2.9%

The index of production in construction increased 2.9% in year-on-year terms, in December (3 months moving average, working days and seasonally adjusted), up by 0.4 percentage points from November.

Employment and wages and salaries grew 1.9% and 6.5% (1.8% and 9.7% in the previous month), respectively.

In the year 2021, index of production in construction grew 2.9% (decreased by 3.3% in 2020). Employment and wages and salaries increases, in 2021, 1.6% and 7.1%, respectively (diminished 0.4% and 1.0% in 2020).

Figure 1. Indices of Production in Construction (2015=100)



Next press release – March 10th 2022