



31 January 2022
MONTHLY EMPLOYMENT AND UNEMPLOYMENT ESTIMATES
December 2021

IN DECEMBER, THE UNEMPLOYMENT RATE STOOD AT 5.9% AND THE LABOUR UNDERUTILISATION RATE AT 11.7%

November 2021:

- The active population (5,178.3 thousand) increased by 0.2% from the previous month, by 0.4% from three months before and by 2.1% from the same month of 2020.
- The employed population (4,852.8 thousand) increased from the three comparison periods: 0.3%, 0.4% and 3.1%, respectively.
- The unemployed population (325.5 thousand) decreased by 1.2% from October 2021 and by 11.5% from November 2020, having remained almost unchanged from August 2021.
- The unemployment rate stood at 6.3%, down 0.1 percentage points (pp) from the previous month, the same value as in three months before and down 0.9 pp from a year earlier.
- The inactive population (2,506.8 thousand) decreased from the three comparison periods: 0.2%, 0.5% and 3.6%, respectively.
- The labour underutilisation rate was estimated at 11.7%, the same value as in the previous month, down 0.6 pp from August and down 2.3 pp from November 2020.

December 2021¹:

- The active population (5,169.9 thousand) decreased by 0.2% from the previous month and increased by 0.1% compared to September and by 2.6% from a year earlier.
- The employed population (4,865.9 thousand) increased by 0.3% from November, by 0.6% from September and by 3.7% from December 2020.
- The unemployed population (304.0 thousand) decreased from the three comparison periods: 6.6%, 7.4% and 12.3%, respectively.
- The unemployment rate stood at 5.9%, down 0.4 pp from the previous month, down 0.5 pp from three months before and down 1.0 pp from a year before.
- The inactive population (2,515.8 thousand) has increased from November 2021 (0.4%), remained practically unchanged from September of the same year and decrease from December 2020 (4.7%).
- The labour underutilisation rate stood at 11.7%, the same value as in the previous month and down both from three months before (0.3 pp) and from a year earlier (2.0 pp).

¹ The estimates for the last reference month (in this case, the quarter centred in December 2021: from November 2021 to January 2022) were calculated with incomplete information for the last month of the quarter (January 2022). These estimates will be revised next month (as described in the methodological note).



The table below presents the main indicators of the Monthly Employment and Unemployment Estimates.

Monthly Employment and Unemployment Estimates (16 to 74)

Main Indicators

	Unit	Seasonally adjusted data						
		Nov 2020	Dec 2020	Aug 2021	Sep 2021	Oct 2021	Nov 2021	Dec 2021 (p)
Active population	Thousands	5,072.9	5,037.7	5,158.0	5,164.4	5,169.3	5,178.3	5,169.9
Employed population		4,705.2	4,691.3	4,832.9	4,836.0	4,839.8	4,852.8	4,865.9
Unemployed population		367.7	346.5	325.1	328.4	329.6	325.5	304.0
Inactive population		2,601.2	2,639.1	2,520.6	2,514.9	2,512.9	2,506.8	2,515.8
Labour underutilisation		739.8	719.9	654.2	637.8	622.4	623.3	622.1
Activity rate	%	66.1	65.6	67.2	67.3	67.3	67.4	67.3
Employment rate		61.3	61.1	62.9	63.0	63.0	63.1	63.3
Unemployment rate		7.2	6.9	6.3	6.4	6.4	6.3	5.9
Inactivity rate		33.9	34.4	32.8	32.7	32.7	32.6	32.7
Labour underutilisation rate		14.0	13.7	12.3	12.0	11.7	11.7	11.7

Source: Statistics Portugal, Labour Force Survey.

Note: (p) – Provisional estimates.

In **November 2021**, from the previous month, the active population increased (9.0 thousand people; 0.2%), while the inactive population decreased (6.1 thousand; 0.2%)². The increase of the active population was due to the increase of the employed population (13.0 thousand; 0.3%) being higher than the decreased of the unemployed population (4.1 thousand; 1.2%), while the decrease of the inactive population was explained by the decrease in the number of inactive persons available to work but not seeking a job (4.7 thousand; 3.4%) and of inactive persons who have not looked for a job and were not available to work (9.4 thousand; 0.4%).

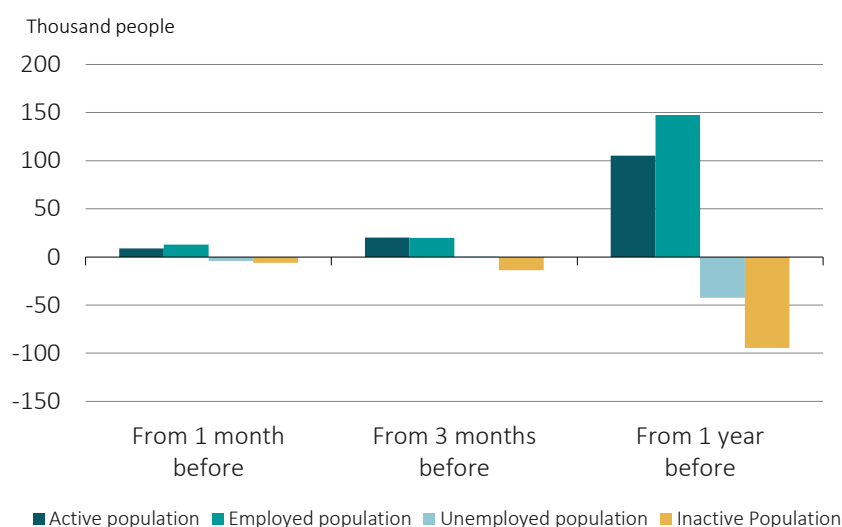
The increase of the active population compared to three months before (20.3 thousand; 0.4%) came almost exclusively from the increase of the employed population (19.9 thousand; 0.4%) given that the unemployed population remained almost unchanged. The inactive population decreased from August of 2021 (13.8 thousand; 0.5%) mainly due the decrease in the number of inactive persons available to work but not searching for a job (9.5 thousand; 6.6%).

The increase of the active population (105.4 thousand; 2.1%) from November 2020 was followed by an increase of the employed population (147.6 thousand; 3.1%) that surpassed the decrease of the unemployed population (42.2 thousand; 11.5%). The inactive population decreased by 94.4 thousand people (3.6%), due to the decrease of the number of inactive persons available to work but not seeking a job (58.5 thousand; 30.3%) and the number of other inactive persons not available and not seeking a job (36.9 thousand; 1.5%).

² The changes in the active population and in the inactive population are not necessarily symmetrical. They are also influenced by the total population change that result from the natural balance and the net migration.

These results determined the following changes in the unemployment rate – that stood at 6.3% in November 2021: down 0.1 pp from in the previous month, same value as in three months before and down 0.9 pp from the same month of 2020.

Figure 1. Change in the active, employed, unemployed and inactive population in November 2021
(seasonally adjusted data)



Also in November 2021, the labour underutilisation covered 623.3 thousand people, remaining almost unchanged from the previous month, and having decreased from three months before (30.9 thousand; 4.7%) and from a year before (116.5 thousand; 15.8%). The labour underutilisation rate was estimated at 11.7% remained unchanged from the previous month and decreased from by 0.6 pp from three months before and by 2.3 pp from a year earlier.

In **December 2021**, the estimated active population decreased from the previous month by 8.4 thousand people (0.2%) and the estimated inactive population increased by 9.0 thousand (0.4%). The decrease of the active population resulted from the decrease of the unemployed population by 21.5 thousand (6.6%) having surpassed the increase of the employed population (13.1 thousand; 0.3%), while the increase of the inactive population was explained by the increase of the number of inactive persons available to work but not seeking a job (6.9 thousand; 5.1%) and of inactive persons looking for a job but not available to work (6.0 thousand; 26.6%).

On the other hand, the increase of the active population from three months before (5.5 thousand; 0.1%) came from the increase of the employed population (29.9 thousand; 0.6%) being higher than the decrease of the unemployed population (24.4 thousand; 7.4%). The inactive population remained almost unchanged due to the increase of the number of inactive persons looking for a job but not available to work (10.5 thousand; 58.7%) being similar to the combined decrease of the number of inactive persons available to work but not seeking a job (2.9 thousand; 2.0%) and the other inactive persons not available and not seeking a job (6.7 thousand; 0.3%).



Finally, the active population increase (132.2 thousand; 2.6%) from December 2020 was followed by the increase of the employed population (174.6 thousand; 3.7%) that offset the decrease of the unemployed population (42.5 thousand; 12.3%). The inactive population decreased by 123.3 thousand people (4.7%), due to the decrease in the number of inactive persons available to work but not seeking a job (59.0 thousand; 29.5%) and of other inactive persons not available and not seeking a job (64.8 thousand; 2.7%).

These results determined the following changes in the unemployment rate – which stood at 5.9%: down 0.4 pp from November 2021, down 0.5 pp from September of the same year and down 1.0 pp from December 2020.

Figure 2. Change in the active, employed, unemployed and inactive population in December 2021
(Seasonally adjusted data)



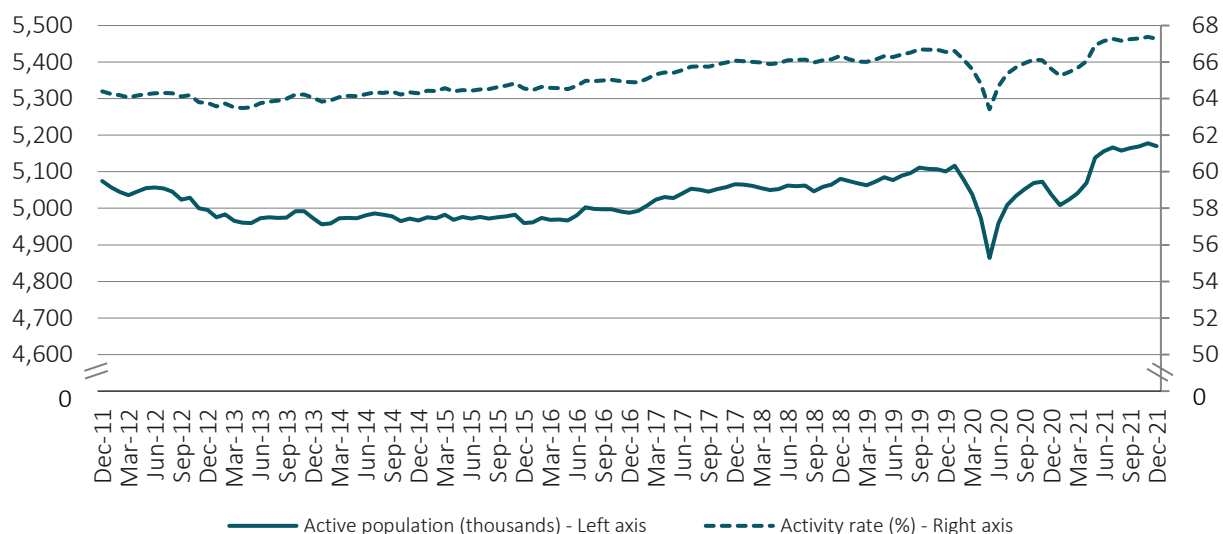
Note: The December 2021 estimates are provisional.

Also in December 2021, the labour underutilisation covered 622.1 thousand people, a lower number than in the previous month (1.2 thousand; 0.2%), than in three months before (15.7 thousand; 2.5%), and than that of the same month of 2020 (97.8 thousand; 13.6%). The labour underutilisation rate was estimated at 11.7%, the same value as in the previous month, down 0.3 pp from three months before and down 2.0 pp from a year earlier.

The following figures present the evolution in the last 10 years of the main population and respective rates under analysis in this Press Release.

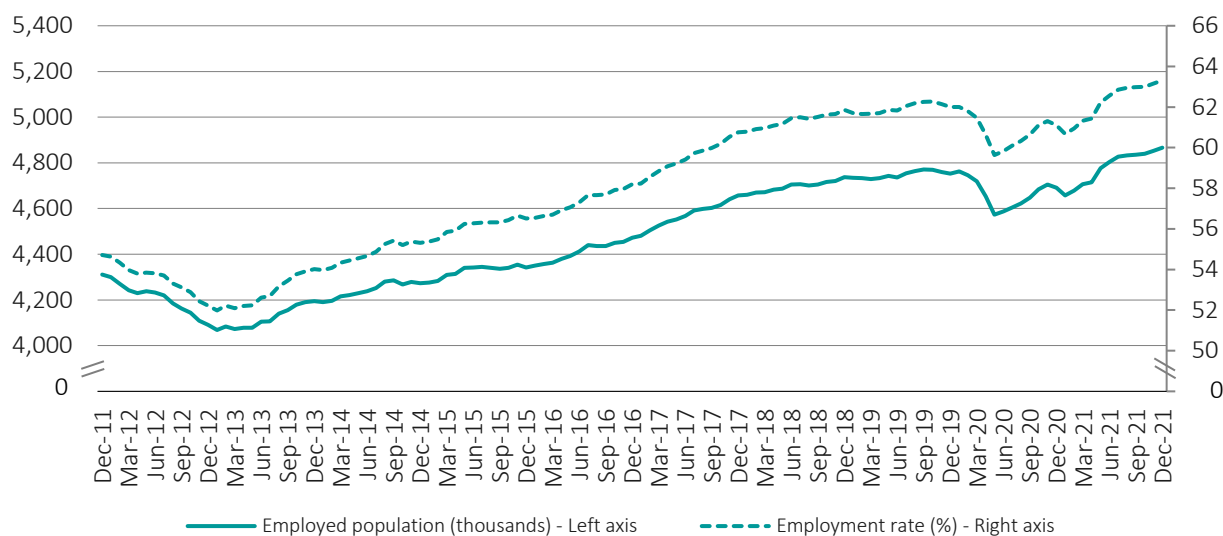
Despite the decrease in December 2021, the active population has record one of the highest values of the last 10 years. The employed population has record continuous monthly growth since February 2021.

Figure 3. Active population and activity rate
(seasonally adjusted data)



Note: The December 2021 estimates are provisional.

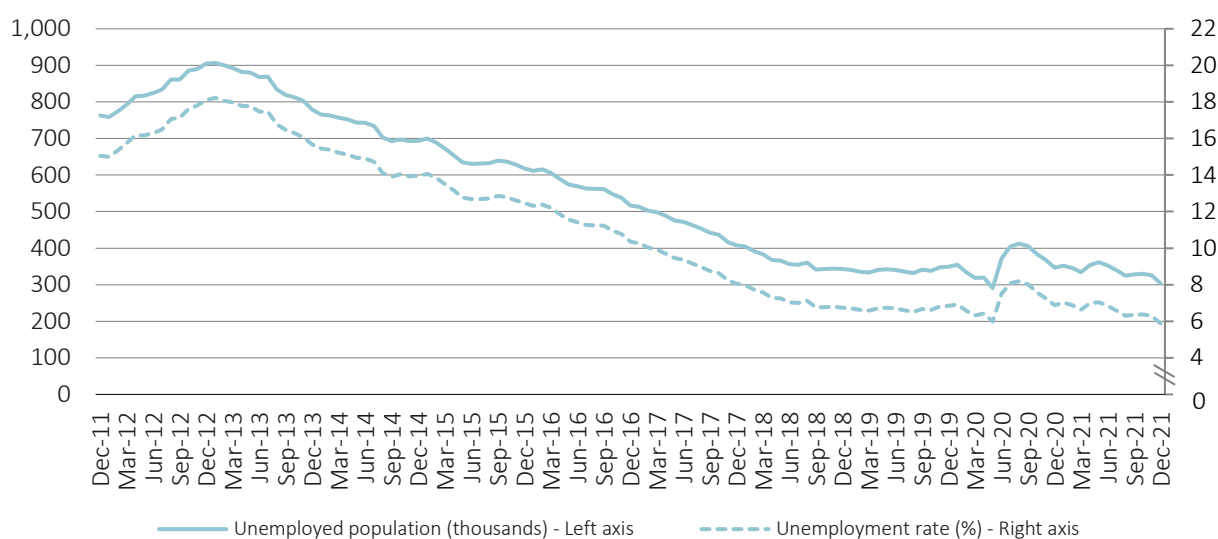
Figure 4. Employed population and employment rate
(seasonally adjusted data)



Note: The December 2021 estimates are provisional.

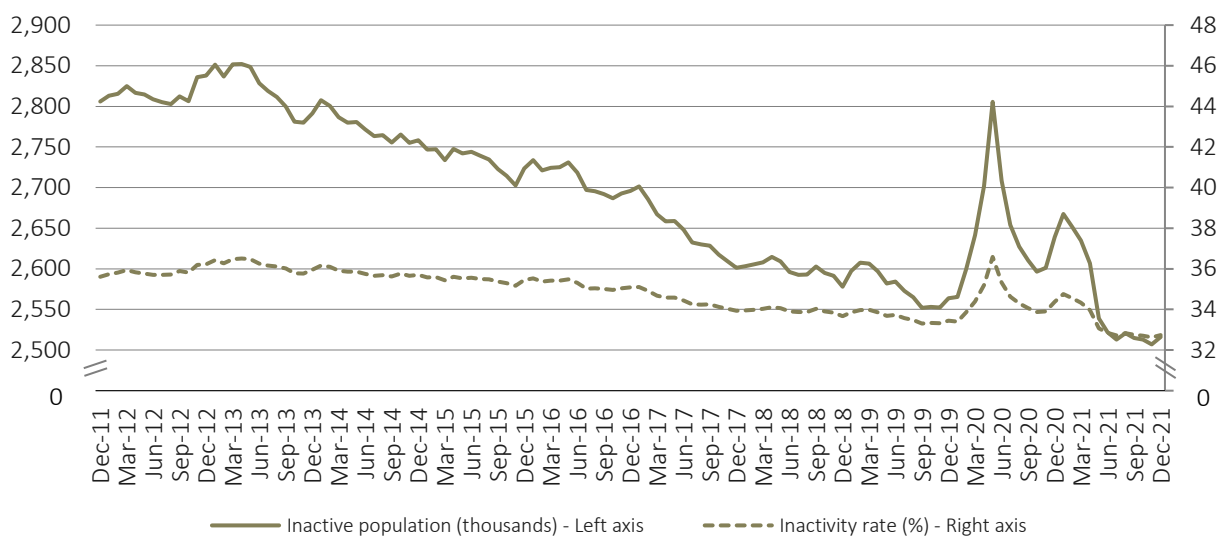
Since January 2013, and only with the exception from June to August 2020, it is observed a downwards trend in the unemployed population. Since June 2020, the inactive population has been decreasing except between November 2020 and January 2021 and in August and December 2021. Despite the increase in December 2021, it registered one of the lowest values in the last 10 years.

Figure 5. Unemployed population and unemployment rate
(seasonally adjusted data)



Note: The December 2021 estimates are provisional.

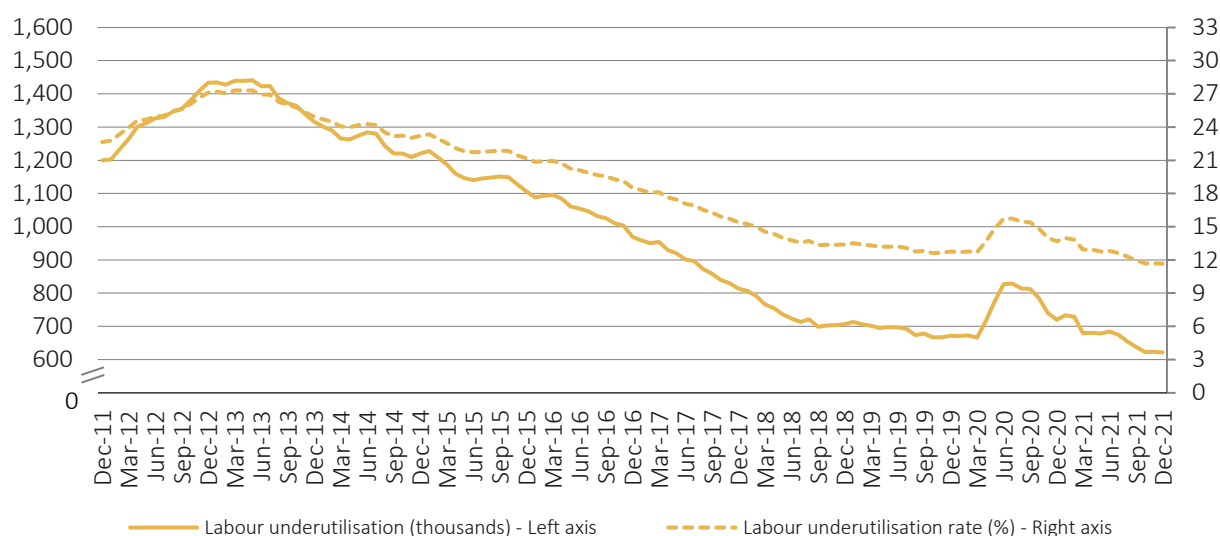
Figure 6. Inactive population and inactivity rate
(seasonally adjusted data)



Note: The December 2021 estimates are provisional.

In December 2021, the labour underutilisation reached its lowest value (622.1 thousand) since the beginning of the series started in 2011. It should be noted that, in February 2020 (before the COVID-19 pandemic), this estimate covered 673.0 thousand people and that its highest value was reached in May 2013 (1,440.9 thousand).

Figure 7. Labour underutilisation and labour underutilisation rate
(seasonally adjusted data)



Note: The December 2021 estimates are provisional.



Criteria used when classifying the population aged 16 to 74 by labour status

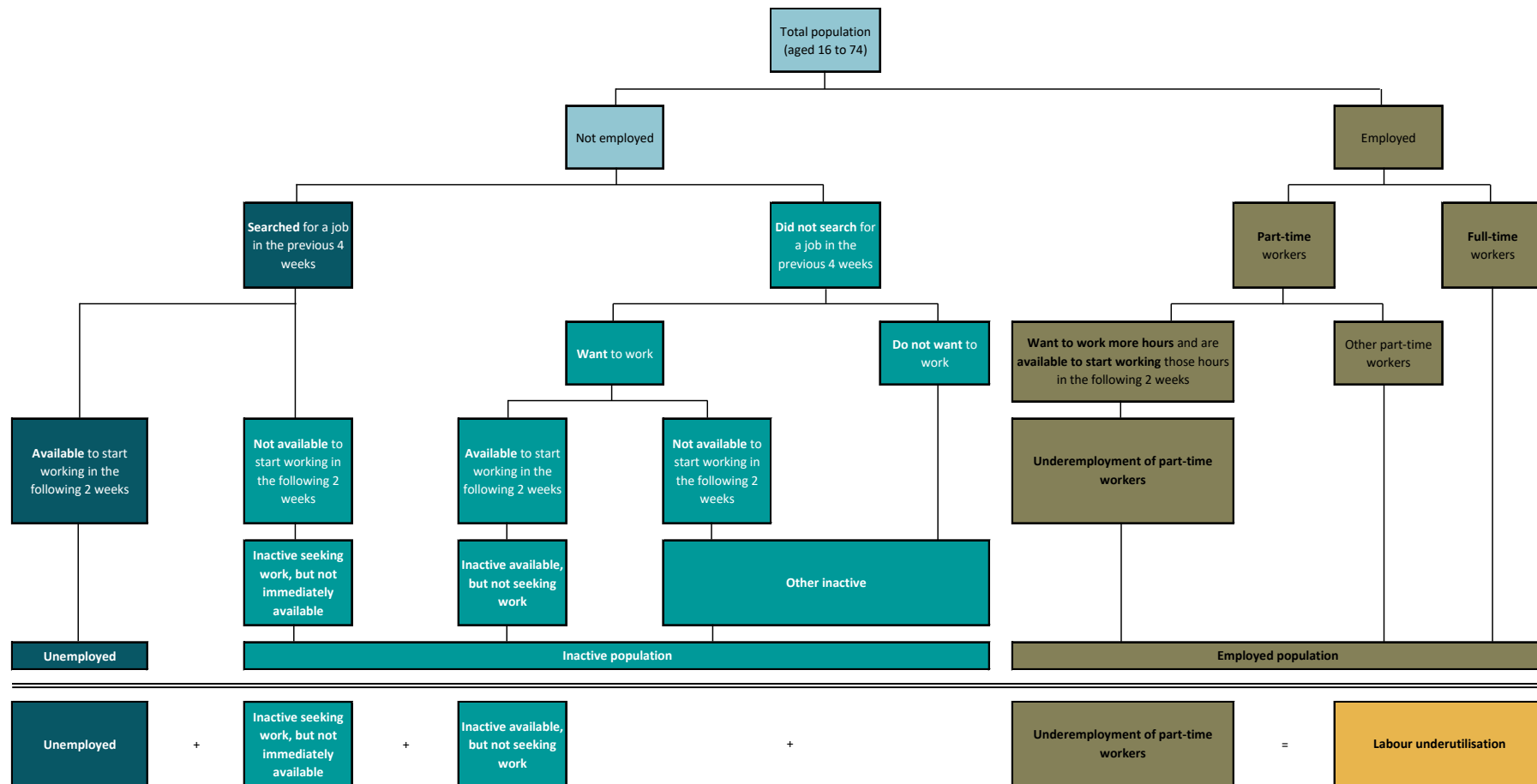




Table 1: Active population and active rate by sex and age group (16 to 74)

	Seasonally adjusted data					Not seasonally adjusted data				
	Dec 2020	Sep 2021	Oct 2021	Nov 2021	Dec 2021 (p)	Dec 2020	Sep 2021	Oct 2021	Nov 2021	Dec 2021 (p)
	Thousands									
Active population	5,037.7	5,164.4	5,169.3	5,178.3	5,169.9	5,035.6	5,173.2	5,181.1	5,184.1	5,165.7
Men	2,514.2	2,587.4	2,590.6	2,600.6	2,590.8	2,512.2	2,594.5	2,596.8	2,606.1	2,588.1
Women	2,523.5	2,577.0	2,578.7	2,577.7	2,579.1	2,523.4	2,578.7	2,584.3	2,578.0	2,577.7
Youth (aged 15 to 24)	312.6	319.5	322.6	325.1	325.6	312.8	329.2	331.2	327.5	325.3
Adults (aged 25 to 74)	4,725.2	4,844.9	4,846.7	4,853.2	4,844.3	4,722.8	4,844.0	4,849.9	4,856.6	4,840.4
	%									
Activity rate	65.6	67.3	67.3	67.4	67.3	65.6	67.4	67.4	67.5	67.2
Men	68.8	70.5	70.6	70.8	70.6	68.8	70.7	70.8	71.0	70.5
Women	62.7	64.2	64.3	64.2	64.3	62.7	64.3	64.4	64.2	64.2
Youth (aged 15 to 24)	31.7	32.2	32.5	32.7	32.7	31.7	33.2	33.3	32.9	32.7
Adults (aged 25 to 74)	70.6	72.5	72.5	72.5	72.4	70.6	72.4	72.5	72.6	72.3

Source: Statistics Portugal, Labour Force Survey.

Note: (p) – Provisional estimates.

Table 2: Employed population and employment rate by sex and age group (16 to 74)

	Seasonally adjusted data					Not seasonally adjusted data				
	Dec 2020	Sep 2021	Oct 2021	Nov 2021	Dec 2021 (p)	Dec 2020	Sep 2021	Oct 2021	Nov 2021	Dec 2021 (p)
	Thousands									
Employed population	4,691.3	4,836.0	4,839.8	4,852.8	4,865.9	4,677.1	4,844.6	4,846.0	4,853.5	4,851.2
Men	2,345.2	2,427.7	2,434.7	2,441.3	2,438.2	2,337.9	2,437.7	2,440.1	2,443.5	2,430.7
Women	2,346.1	2,408.3	2,405.1	2,411.5	2,427.7	2,339.2	2,406.9	2,405.8	2,410.1	2,420.4
Youth (aged 15 to 24)	239.0	247.0	251.3	252.5	256.9	235.6	251.3	253.0	250.9	253.2
Adults (aged 25 to 74)	4,452.3	4,589.0	4,588.5	4,600.4	4,609.0	4,441.6	4,593.3	4,593.0	4,602.6	4,598.0
	%									
Employment rate	61.1	63.0	63.0	63.1	63.3	60.9	63.1	63.1	63.2	63.1
Men	64.2	66.2	66.3	66.5	66.4	64.0	66.5	66.5	66.6	66.2
Women	58.3	60.0	59.9	60.1	60.5	58.1	60.0	60.0	60.0	60.3
Youth (aged 15 to 24)	24.2	24.9	25.3	25.4	25.8	23.9	25.3	25.5	25.2	25.5
Adults (aged 25 to 74)	66.5	68.6	68.6	68.8	68.9	66.4	68.7	68.7	68.8	68.7

Source: Statistics Portugal, Labour Force Survey.

Note: (p) – Provisional estimates.



Table 3: Unemployed population and unemployment rate by sex and age group (16 to 74)

	Seasonally adjusted data					Not seasonally adjusted data				
	Dec 2020	Sep 2021	Oct 2021	Nov 2021	Dec 2021 (p)	Dec 2020	Sep 2021	Oct 2021	Nov 2021	Dec 2021 (p)
	Thousands									
Unemployed population	346.5	328.4	329.6	325.5	304.0	358.4	328.6	335.2	330.6	314.5
Men	169.0	159.7	155.9	159.3	152.5	174.3	156.8	156.7	162.6	157.3
Women	177.4	168.6	173.6	166.2	151.4	184.2	171.8	178.5	168.0	157.2
Youth (aged 15 to 24)	73.6	72.5	71.3	72.6	68.7	77.2	77.9	78.2	76.6	72.1
Adults (aged 25 to 74)	272.9	255.8	258.2	252.9	235.3	281.2	250.7	256.9	254.0	242.4
	%									
Unemployment rate	6.9	6.4	6.4	6.3	5.9	7.1	6.4	6.5	6.4	6.1
Men	6.7	6.2	6.0	6.1	5.9	6.9	6.0	6.0	6.2	6.1
Women	7.0	6.5	6.7	6.4	5.9	7.3	6.7	6.9	6.5	6.1
Youth (aged 15 to 24)	23.5	22.7	22.1	22.3	21.1	24.7	23.7	23.6	23.4	22.2
Adults (aged 25 to 74)	5.8	5.3	5.3	5.2	4.9	6.0	5.2	5.3	5.2	5.0

Source: Statistics Portugal, Labour Force Survey.

Note: (p) – Provisional estimates.

Table 4: Inactive population and inactivity rate by sex and age group (16 to 74)

	Seasonally adjusted data					Not seasonally adjusted data				
	Dec 2020	Sep 2021	Oct 2021	Nov 2021	Dec 2021 (p)	Dec 2020	Sep 2021	Oct 2021	Nov 2021	Dec 2021 (p)
	Thousands									
Inactive population	2,639.1	2,514.9	2,512.9	2,506.8	2,515.8	2,641.3	2,506.2	2,501.1	2,500.9	2,520.0
Men	1,139.3	1,080.5	1,079.2	1,070.7	1,080.8	1,141.4	1,073.5	1,073.0	1,065.3	1,083.5
Women	1,499.8	1,434.4	1,433.7	1,436.1	1,435.0	1,499.9	1,432.7	1,428.1	1,435.7	1,436.5
Youth (aged 15 to 24)	673.5	673.2	670.7	668.9	668.7	673.3	663.5	662.1	666.5	668.9
Adults (aged 25 to 74)	1,965.6	1,841.7	1,842.2	1,837.9	1,847.2	1,968.0	1,842.6	1,839.0	1,834.5	1,851.1
	%									
Inactivity rate	34.4	32.7	32.7	32.6	32.7	34.4	32.6	32.6	32.5	32.8
Men	31.2	29.5	29.4	29.2	29.4	31.2	29.3	29.2	29.0	29.5
Women	37.3	35.8	35.7	35.8	35.7	37.3	35.7	35.6	35.8	35.8
Youth (aged 15 to 24)	68.3	67.8	67.5	67.3	67.3	68.3	66.8	66.7	67.1	67.3
Adults (aged 25 to 74)	29.4	27.5	27.5	27.5	27.6	29.4	27.6	27.5	27.4	27.7

Source: Statistics Portugal, Labour Force Survey.

Note: (p) – Provisional estimates.



Table 5: Labour underutilisation and labour underutilisation rate (16 to 74)

	Seasonally adjusted data					Not seasonally adjusted data				
	Dec 2020	Sep 2021	Oct 2021	Nov 2021	Dec 2021 (p)	Dec 2020	Sep 2021	Oct 2021	Nov 2021	Dec 2021 (p)
	Thousands									
Labour underutilisation	719.9	637.8	622.4	623.3	622.1	737.5	634.5	623.7	630.1	638.1
Unemployed population	346.5	328.4	329.6	325.5	304.0	358.4	328.6	335.2	330.6	314.5
Underemployed part-time workers	145.1	147.2	139.2	140.9	148.3	150.2	136.2	135.3	143.2	153.5
Persons seeking work but not immediately available	28.0	18.0	14.5	22.5	28.5	28.0	18.0	14.5	22.5	28.5
Persons available to work but not seeking	200.3	144.2	139.1	134.4	141.3	200.8	151.7	138.7	133.8	141.6
	%									
Labour underutilisation rate	13.7	12.0	11.7	11.7	11.7	14.0	11.9	11.7	11.8	12.0

Source: Statistics Portugal, Labour Force Survey.

Note: (p) – Provisional estimates.



INSTITUTO NACIONAL DE ESTATÍSTICA
STATISTICS PORTUGAL

press release

DIÁSTAKE

METHODOLOGICAL NOTE

LABOUR FORCE SURVEY

The main purpose of the Labour Force Survey is to characterise the population in terms of the labour market. It is a quarterly sample survey, addressed to families occupying the same dwelling in the national territory, which makes available quarterly and annual data.

Most of the characteristics observed in this survey report to the situation in one pre-defined week (from Monday to Sunday), known as reference week. The reference weeks are uniformly distributed throughout the quarters and years. The interviews usually take place in the week following the reference week.

The information is obtained directly, through computer-assisted interview, by using a mixed data collection mode: the initial interview is done face-to-face by an interviewer visiting the household and the other five interviews are done by telephone if certain requirements are met.

Published data were calibrated by using the population estimates calculated from the final results of Census 2011.

MONTHLY EMPLOYMENT AND UNEMPLOYMENT ESTIMATES

In 2014, Statistics Portugal initiated a monthly release of Labour Force Survey estimates for the main labour market indicators in addition to the usual quarterly estimates' releases.

With this initiative, Statistics Portugal intends to provide to users monthly updated information on labour market recent developments, allowing, at the same time, a more complete reading picture than that provided so far by Eurostat in its monthly releases of the unemployed population and unemployment rate estimates for Portugal. With this dissemination, Statistics Portugal also satisfies a specific requirement from the PEEIs (Principal European Economic Indicators).

Taking advantage of the continuous nature of the Labour Force Survey collection process, it is possible to monthly obtain estimates related to successive sets of three months (moving quarters), assuring consistency with the quarterly released estimates.

The monthly estimates refer to centred moving quarters, where the reference month (m) corresponds to the central month of each moving quarter. In fact, the reference month of each Press Release corresponds to the central month of the quarter composed by $m-1$, m and $m+1$ months. Therefore, the monthly changes are calculated on values that contain common months. Therefore, the comparison of moving quarters without common months should be done in relation to reference months three months earlier.

The option for disseminating centred moving quarters series aimed at avoiding delays in the detection of turning points in the economic cycle that arise from the use of simple moving averages, but it implies that the estimates for the latest released moving quarter are provisional (see "Revisions" section below).



As estimates of centred moving quarters, the values (not seasonally adjusted) of the reference months February, May, August and November of each year correspond to the estimates of the 1st, 2nd, 3rd and 4th natural quarters, respectively, whose results are published and analysed with greater detail in the quarterly releases of the Labour Force Survey estimates.

The estimates for the last reference month are always provisional, as they correspond to a moving quarter where for the third month the data collection is not completed yet. In fact, for the first two months ($m-1$ and m) the data collection from the Labour Force Survey is already completed, while for the third month ($m+1$) only partially collected data are available.

In this context, in each monthly Press Release the provisional estimates for the reference month and the revised estimates for the previous months are published, due the availability of complete information for the last moving quarter.

INFORMATION AVAILABLE

The data series selected for monthly releases refer to both employed and unemployed population, by sex and age group, and to the corresponding rates. In relation to these data series, it should be noted the following:

- Unless otherwise stated, the data series analysed in this Press Release are seasonally adjusted. For this reason, the analysis focuses on the comparison with the most recent periods. As agreed, Eurostat started using these estimates in its unemployment monthly releases. The original data series (not seasonally adjusted; as in the Statistics Portugal quarterly releases), are available in Tables of the annex.
- The indicators analysed in this Press Release were calculated for the age subgroup of those aged 16 to 74 (as in the Eurostat News Release), which differs from the criterion adopted at the Statistics Portugal quarterly releases (people aged 16 to 89, in line with the concepts in force of the International Labour Organization).

The back series for all the released and analysed indicators in this Press Release, since February 1998 (quarter from January to March 1998), are available at the Statistics Portugal website and the links to them can be found in the Excel file released together with this Press Release.

Due to rounding, totals may not correspond exactly to the sum of the parts.

REVISIONS

The monthly released data are subject to regular revisions, as previously mentioned. The revisions come from obtaining the final estimates for the previous reference month (moving quarter) due to the conclusion of its last month collection process. Therefore, in each Press Release the not seasonally adjusted final estimates for the previous reference month are published. In addition, are also presented the final estimates resulting from updating of the seasonally adjusted data series whenever a new observation is added.



Revision of November 2021 estimates (16 to 74) - main indicators -			
	Unit	Seasonally adjusted data	Not seasonally adjusted data
Active population		- 1.4	- 1.4
Employed population		0.0	0.0
Unemployed population	Thousands	- 1.4	- 1.4
Inactive population		1.4	1.4
Labour underutilisation		1.9	1.9
Employment rate		0.0	0.0
Unemployment rate		0.0	0.0
Men's unemployment rate		- 0.1	- 0.1
Women's unemployment rate	pp	0.0	0.0
Youth unemployment rate (16 to 24)		- 0.1	0.0
Adults' unemployment rate (25 to 74)		0.0	- 0.1
Labour underutilisation rate		0.0	0.0

SOME CONCEPTS

Unemployed: person aged 16 and 74 who during the reference period met simultaneously the following conditions:

- neither had a job nor was at work;
- had actively sought work, i.e. had actively searched for a paid or unpaid job during the specified period (reference period or the three previous weeks); and
- was available for a paid or unpaid job.

Employed: person aged 16 to 89 who, during the reference period, was in one of the following situations:

- worked for at least one hour for a wage or salary, in cash or in kind (including unpaid family work);
- had a formal attachment to his/her job but was not at work temporarily;
- was in early retirement, but working in the reference week.

Working age resident population: Resident population aged 16 to 89.

Active: person aged 16 to 89 who, during the reference period, furnish the supply of labour force for the production of economic goods and services (was employed or unemployed).

Labour force: population formed by all active persons.

Extended labour force: corresponds to the labour force enlarged by the inactive seeking work but not immediately available and the inactive available but not seeking work.



Labour underutilisation: indicator that aggregates the unemployed population, the underemployment of part-time workers, the inactive seeking work but not immediately available, and the inactive available but not seeking work.

Unemployment rate: rate that defines the relation between the unemployed population and the labour force.

$$U.R. (\%) = (\text{Unemployed population} / \text{Labour force}) \times 100$$

Employment rate: rate that defines the relation between the employed population and the working age population.

$$E.R. (\%) = (\text{Employed population} / \text{Working age population}) \times 100$$

Activity rate of the working age population: rate that defines the relation between the labour force and the working age population.

$$A.R. (\%) = (\text{Labour force} / \text{Working age population}) \times 100$$

Inactivity rate of the working age population: rate that defines the relation between the working age inactive population and the working age population.

$$I.R. (\%) = (\text{Working age inactive population} / \text{Working age population}) \times 100$$

Labour underutilisation rate: rate that defines the relation between the labour underutilisation and the extended labour force.

$$L.U.R. (\%) = (\text{Labour underutilisation} / \text{Extended labour force}) \times 100$$

For the indicators selected for monthly dissemination, it was considered the age subgroup of those aged 16 to 74.

Para For a more detailed definition of the concepts and methodological features of this statistical operation, consult the [Labour Force Survey](#) or the [Monthly Employment and Unemployment Estimates](#) methodological documents (both only in Portuguese) available at the Statistics Portugal website.

Next Press Release

2 March 2022: “Monthly Employment and Unemployment Statistics – January 2022”.

3 March 2022: Eurostat News Release.
