



January 14th 2022

VITAL STATISTICS – Monthly data

December 2021

MORTALITY, LIVE BIRTHS AND MARRIAGES

IN 2021, 125,032 DEATHS WERE REGISTERED IN PORTUGAL, MORE 1.1% THAN IN 2020 AND MORE 11.3% THAN IN 2019

In 2021, there were 125,032 deaths in Portugal, corresponding to an increase of 1,353 (1.1%) deaths compared with 2020 and of 12,741 (11.3%) deaths compared with 2019. The number of deaths from COVID-19 registered in 2021 was 12,004 (6,972 in 2020), accounting for 9.6% of all deaths.

In December 2021, the number of deaths was 11,337, higher than that registered in November (947 more deaths) and lower in 1,659 deaths (-12.8%) than in December 2020. The number of deaths due to COVID-19 increased to 518, accounting for 4.6% of all deaths. The number of deaths due to COVID-19 increased compared with November 2021 (222 more deaths) and decreased compared with December 2020 (1,877 fewer deaths).

In November 2021, 6,464 children were born alive, corresponding to a reduction of 5.5%, when compared to the same month of 2020. The total number of live births registered from January to November 2021 was 72,416, lower than those recorded in the same period of 2019 and 2020, respectively, by 7,646 and 5,988 live births.

In November 2021, the natural balance was -3,902, less negative when compared with the same month of 2020, when it recorded the value of -4,632. The natural balance accumulated until November 2021 was -41,142, worse regarding the same period of 2019 (-22,164) and 2020 (-32,229).

In November 2021, 1,625 marriages were celebrated, which represents an increase of 32.7% (400 more marriages) when compared with November 2020. From January to November 2021 26,923 marriages were celebrated, 9,520 more than in same period of 2020 and 4,362 less than in the same period of 2019.

In this press release, Statistics Portugal provides **preliminary data** regarding the number of deaths, per month until December 2021 and per week until the 52nd week (December 27th to January 2nd), and the number of live births and marriages per month until November 2021, that occurred in the national territory, making a comparison with the homologous period. Indicators on the preliminary monthly number of live births, deaths, and marriages, from January to October 2021, with geographical breakdowns up to NUTS 3, as well as weekly number of deaths, until the 52nd week, by NUTS 3 and daily number of deaths, until January 2nd, by NUTS 2 are made available on the Statistics Portugal Website.

The information is obtained through the Civil Register collected under the Integrated Civil Registration and Identification System (SIRIC) until January 11th, 2022.

VITAL STATISTICS – Monthly Data – December 2021



Mortality increased in December compared to the previous month, but decreased again compared to the same month of 2020

In 2021, there were 125,032 deaths in Portugal, corresponding to an increase of 1,353 (1.1%) deaths compared with 2020 and of 12,741 (11.3%) deaths compared with 2019. The number of deaths from COVID-19 registered in 2021 was 12,004 (6,972 in 2020), accounting for 9.6% of all deaths.

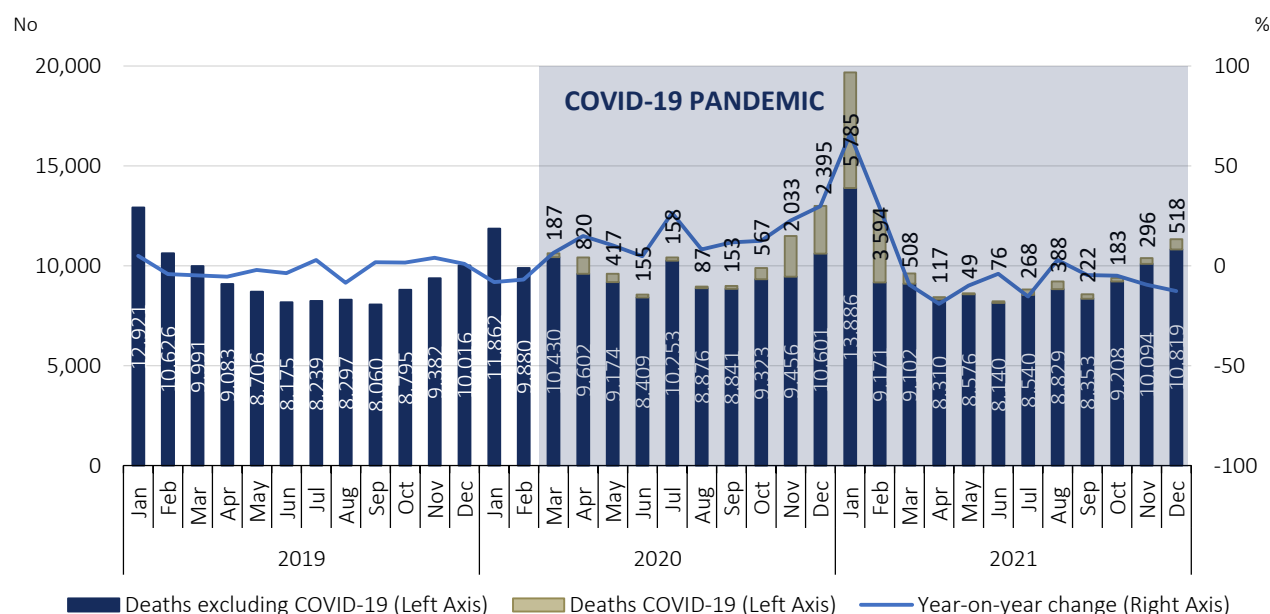
January 2021 registered the highest number of monthly deaths since the beginning of the pandemic (19,671), corresponding to an increase in mortality of 65.8% (+7,809 deaths) compared to the same month of 2020. Of the total deaths, 5,785 were by COVID-19, representing 29.4% of the mortality in January and the maximum of monthly deaths due to COVID-19.

In February, mortality started to decrease, although it continued to register higher values than in the same period of 2020. However, excluding deaths by COVID-19, mortality in this month would have been situated, for the first time after the start of the pandemic, below the year-on-year value of 2020.

Between March and November 2021, except for the month of August, the total number of deaths continued to decrease compared to the values registered in the same months of 2020.

In December 2021, the number of deaths was 11,337, 947 more deaths than in the previous month. In this month, however, there was a decrease of 12.8% when compared with the same period of 2020 (1,659 fewer deaths). The number of deaths due to COVID-19 increased to 518 (222 more deaths compared with November 2021), accounting for 4.6% of all deaths. Compared with December 2020, there was a decrease of 1,877 deaths due to COVID-19.

Figure 1: Deaths and year-on-year change, January 2019 to December 2021



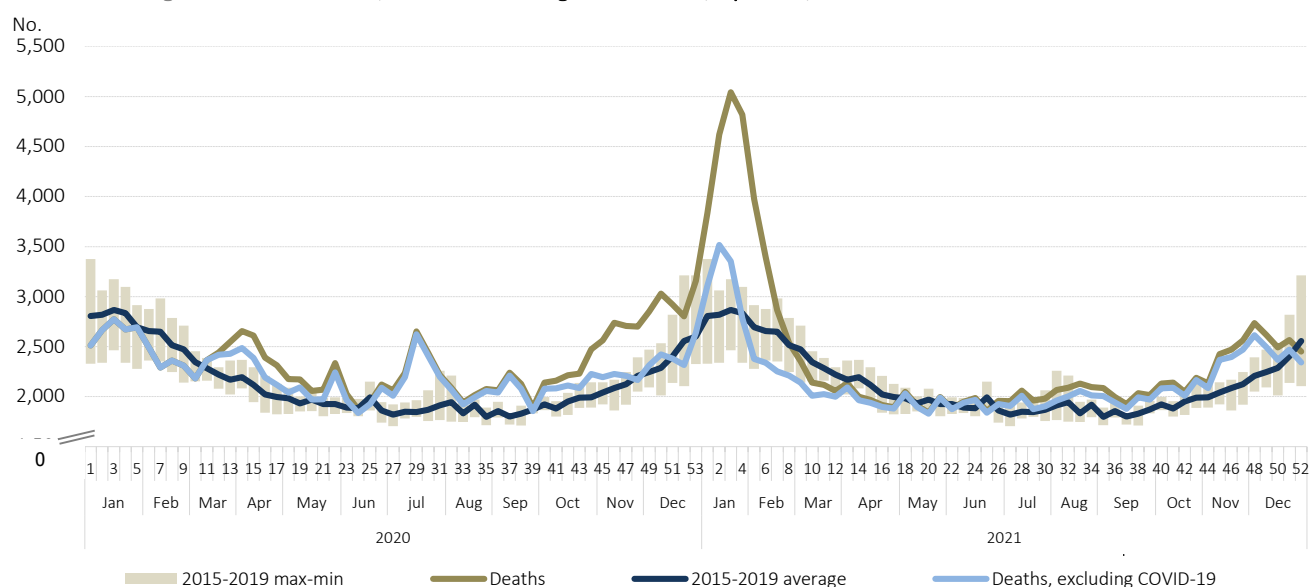
Source: Statistics Portugal, Deaths. Directorate-General of Health, Daily COVID-19 Status Report.



Analyzing weekly mortality, it was in the 3rd week of 2021 (January 18th to 24th) that the highest number of deaths (5,044) was registered since the beginning of the pandemic. However, it was in the 4th week (January 25th to 31st) that the highest number of deaths by COVID-19 (2,036) was reached.

Between December 6th and 26th (weeks 49 to 51), the number of deaths continued above the 2015-2019 average. In week 52 (December 27th, 2021, to January 2nd, 2022), the number of deaths was lower than the average of the 5 years before the pandemic. In this week, there were 2,450 deaths, of which 110 were due to COVID-19, accounting for 4.5% of all deaths.

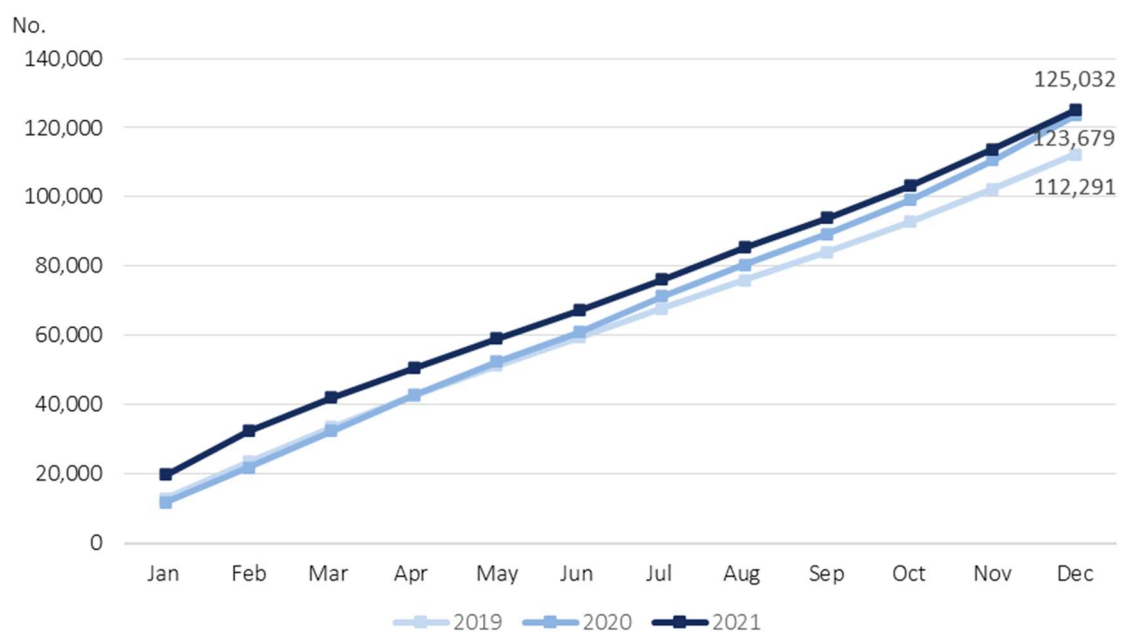
Figure 2: Deaths 2020, 2021 and average 2015-2019, by week, weeks 1 of 2020 to 52 of 2021



Source: Statistics Portugal, Deaths. Directorate-General of Health, Daily COVID-19 Status Report.

Despite the reduction in mortality observed from March 2021 compared to the same months of 2020, this did not compensate for the high number of deaths registered in January and February 2021.

Figure 3: Monthly deaths (cumulative numbers), 2019, 2020 and 2021



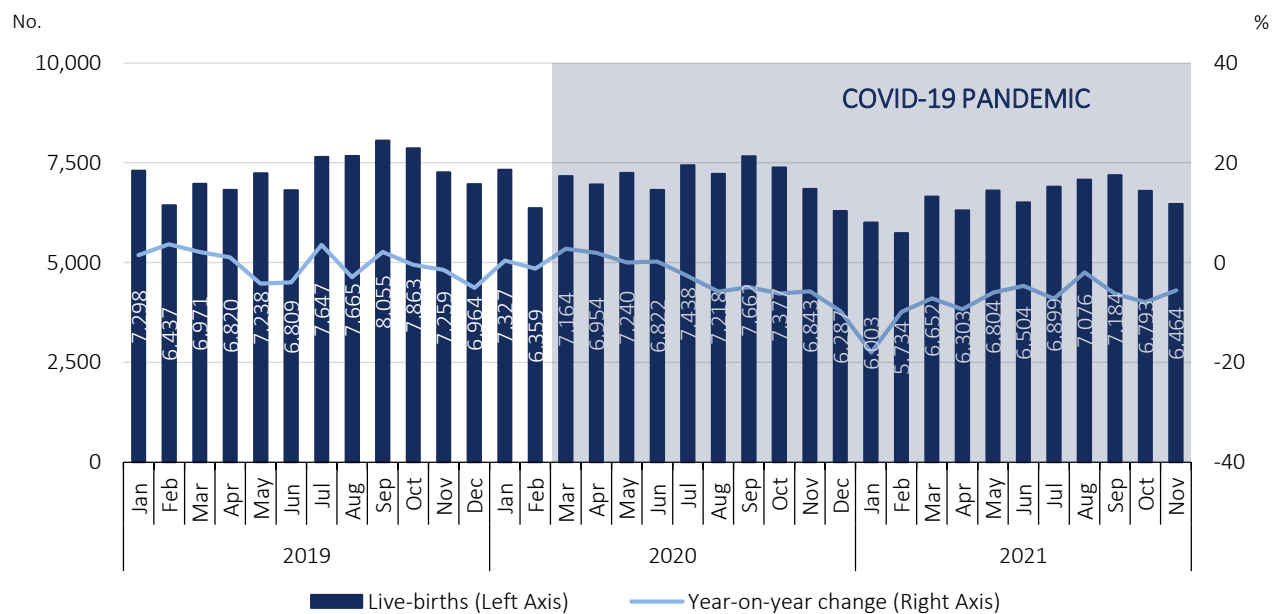
Source: Statistics Portugal, Deaths.



In November, the number of live births decreased by 5.5% when compared to the same month of 2020

In October and November 2021, 6,793 and 6,464 children were born alive, corresponding to reductions of 7.9% (584 less) and 5.5% (379 less) when compared to the same months of 2020.

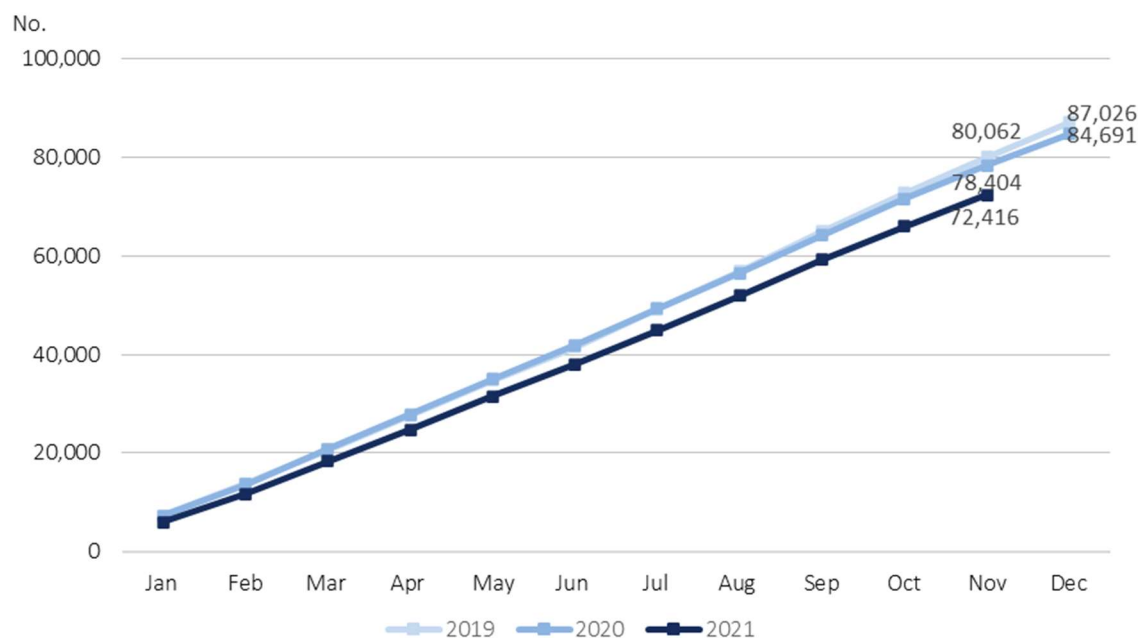
Figure 4: Live births and year-on-year change, January 2019 to November 2021



Source: Statistics Portugal, Live births.

Despite some recovery in births from March 2021, the total number of live births between January and November 2021 (72,416) was lower than that registered in the same months of 2019 and 2020, representing, respectively, a total of 7,646 and 5,988 less live births.

Figure 5: Monthly live births (cumulative numbers), 2019, 2020 and 2021



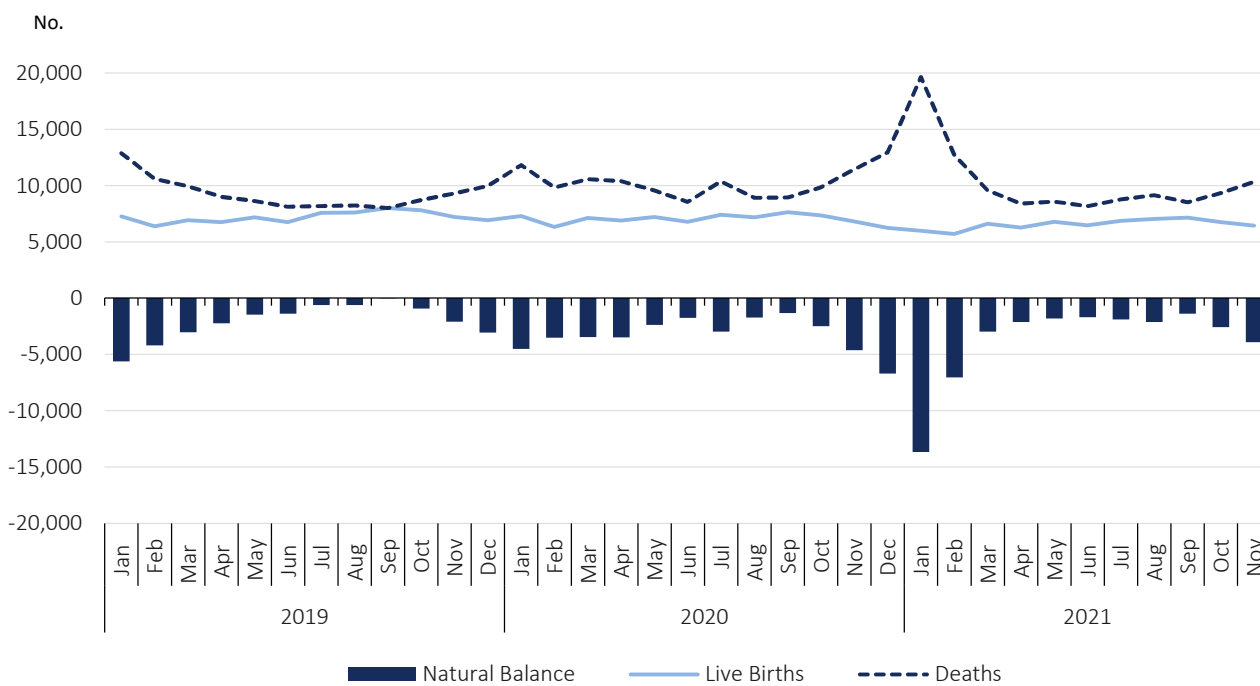
Source: Statistics Portugal, Live births.

In November, the natural balance was -3,902

The increase in the number of deaths, to which mortality due to COVID-19 contributed, as well as the decrease in the number of live births, resulted in a strong reduction of the natural balance in 2020 and in the first two months of 2021. As of March 2021, the natural balance, despite being negative, has eased.

In October and November 2021, the natural balance registered, respectively, values of -2,571 and -3,902. The value of the natural balance recorded in November was less negative when compared to that registered in the same month of 2020 (-4,632).

Figure 6: Live births, deaths, and natural balance¹, January 2019 to November 2021

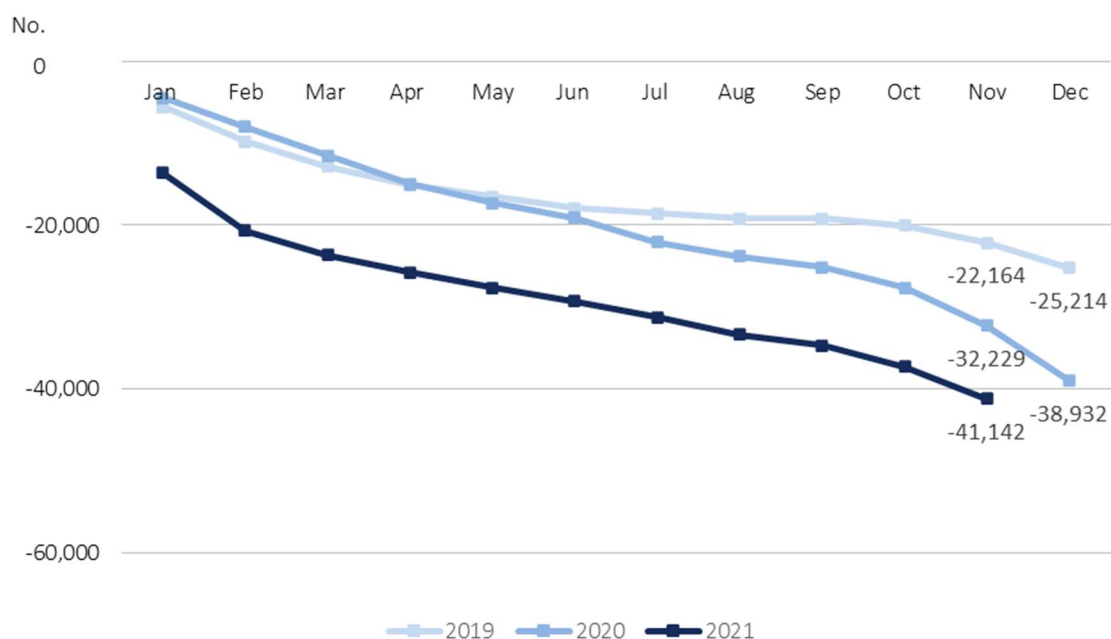


Source: Statistics Portugal, Live births, Deaths and Demographic indicators.

From January to November 2021, the accumulated value of the natural balance was -41,142, lower than the accumulated value in the same period of 2019 (-22,614) and 2020 (-32,229).

¹ The natural balance is calculated based on the number of live births of mothers residing in Portugal and the number of deaths of residents in Portugal.

Figure 7: Monthly natural balance (cumulative numbers), 2019, 2020 and 2021



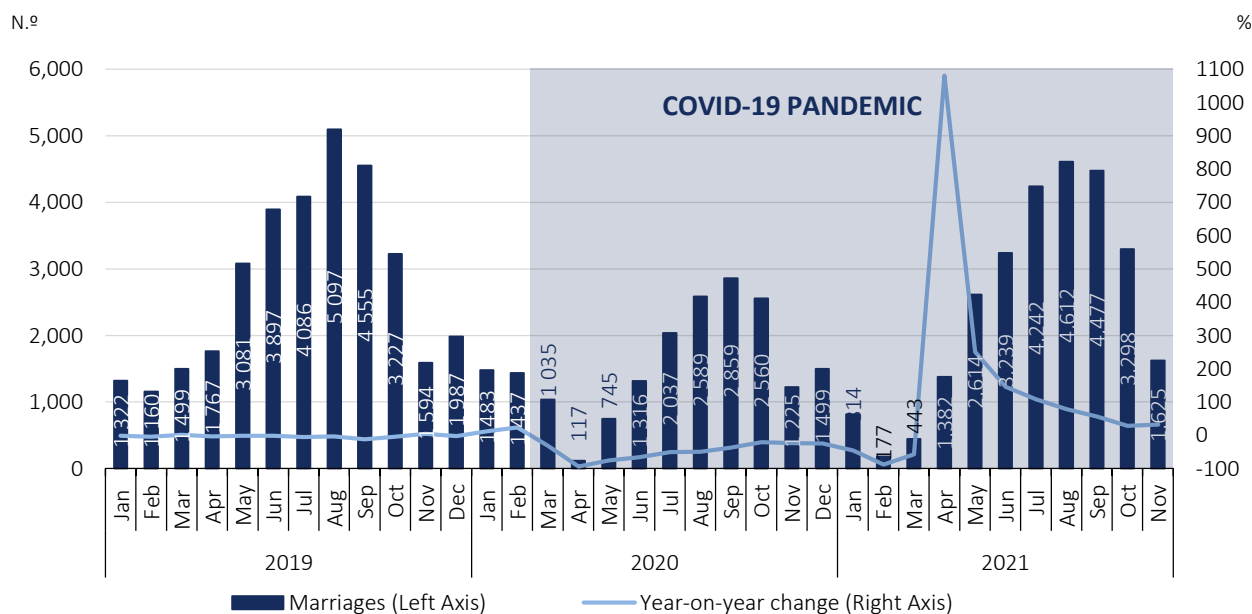
Source: Statistics Portugal, Live births, Deaths and Demographic indicators.

In November, marriage celebrations-maintained growth trend

The measures resulting from the containment of the pandemic had an impact on the lives of citizens, including mobility and social contact. As such, the statistical data on marriages celebrated from March 2020 onwards should be read in this context.

In October and November 2021, 3,298 and 1,625 marriages were celebrated, respectively, which corresponds to an increase of 28.8% and 32.7% regarding the months of October and November 2020 (738 and 400 more, respectively).

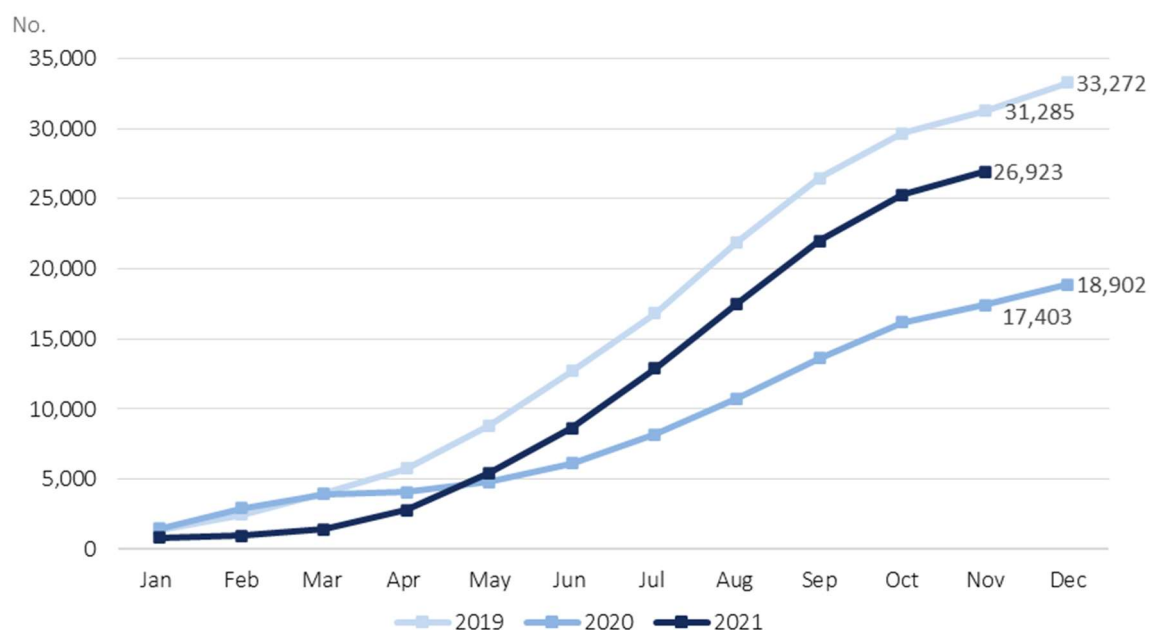
Figure 8: Marriages and year-on-year change, January 1919 to November 2021



Source: Statistics Portugal, Marriages.

From January to November 2021, 26,923 marriages were celebrated, 9,520 more than in the same period of 2020 and 4,362 less than in the same period of 2019.

Figure 9: Monthly marriages (cumulative numbers), 2019, 2020 and 2021



Source: Statistics Portugal, Marriages.



TECHNICAL NOTE

Statistics Portugal releases the preliminary weekly deaths, based on the information registered in the Civil Register Offices until January 11th, 2021. Indicators on the preliminary monthly number of live births, deaths, and marriages, from January to October 2021, with geographical breakdowns up to NUTS 3, as well as weekly number of deaths, until the 52nd week, by NUTS 3 and daily number of deaths, until January 2nd, by NUTS 2 are made available on the Statistics Portugal Website. In this Press Release the total preliminary figures of live births and marriages are disclosed for the month of November 2021.

Data are obtained from statistical operations of direct and exhaustive collection on live births, deaths and marriages in Portuguese territory using facts that are subject to compulsory civil registration (birth and death) in the Sistema Integrado do Registo e Identificação Civil (SIRIC).

In addition to administrative information obtained from Civil Register Offices, Statistics Portugal collects an additional set of variables identified as statistically pertinent to the National Statistic System (NSS) and the European Statistical System (EES). Data is recorded and sent electronically, in compliance with the requirements set out by Statistics Portugal and laid down in liaison with the Instituto de Registos e Notariado (IRN) and the Instituto de Gestão Financeira e Equipamentos da Justiça (IGFEJ).

Data on the number of deaths by COVID-19 are also used, whose source is the daily situation report COVID-19 of the Directorate-General for Health that provides only a partial measure of the pandemic on mortality.

DEFINITIONS

Marriage: Contract signed by two persons that intend to start a family in full partnership and cohabitation according to legislation. Note: marriage can be held between persons from different or same sex.

Live birth: This is the complete expulsion or extraction from the mother's body, irrespective of the duration of the pregnancy, of a product of fertilization that, after separation, breathes or shows any other signs of life, such as a beating of the heart or umbilical cord or actual contraction of any muscle subject to voluntary movement, whether the umbilical cord has been severed and whether the placenta is retained.

Death: The permanent disappearance of vital functions.

Natural balance: The difference between the number of live births and the number of deaths during a given period, usually a calendar year.

Year-on-year change: The year-on-year change compares the level of a variable between the reference month and the same month of the previous year.

Detailed methodological information available at: www.ine.pt, option Products, Metadata system.

Detailed statistical information available at: www.ine.pt, option Products, Statistical data, database, theme Population, subtheme Births and natality rates and subtheme Mortality and life expectancy.