



13 December 2021

INDICES OF PRODUCTION, EMPLOYMENT AND WAGES IN CONSTRUCTION

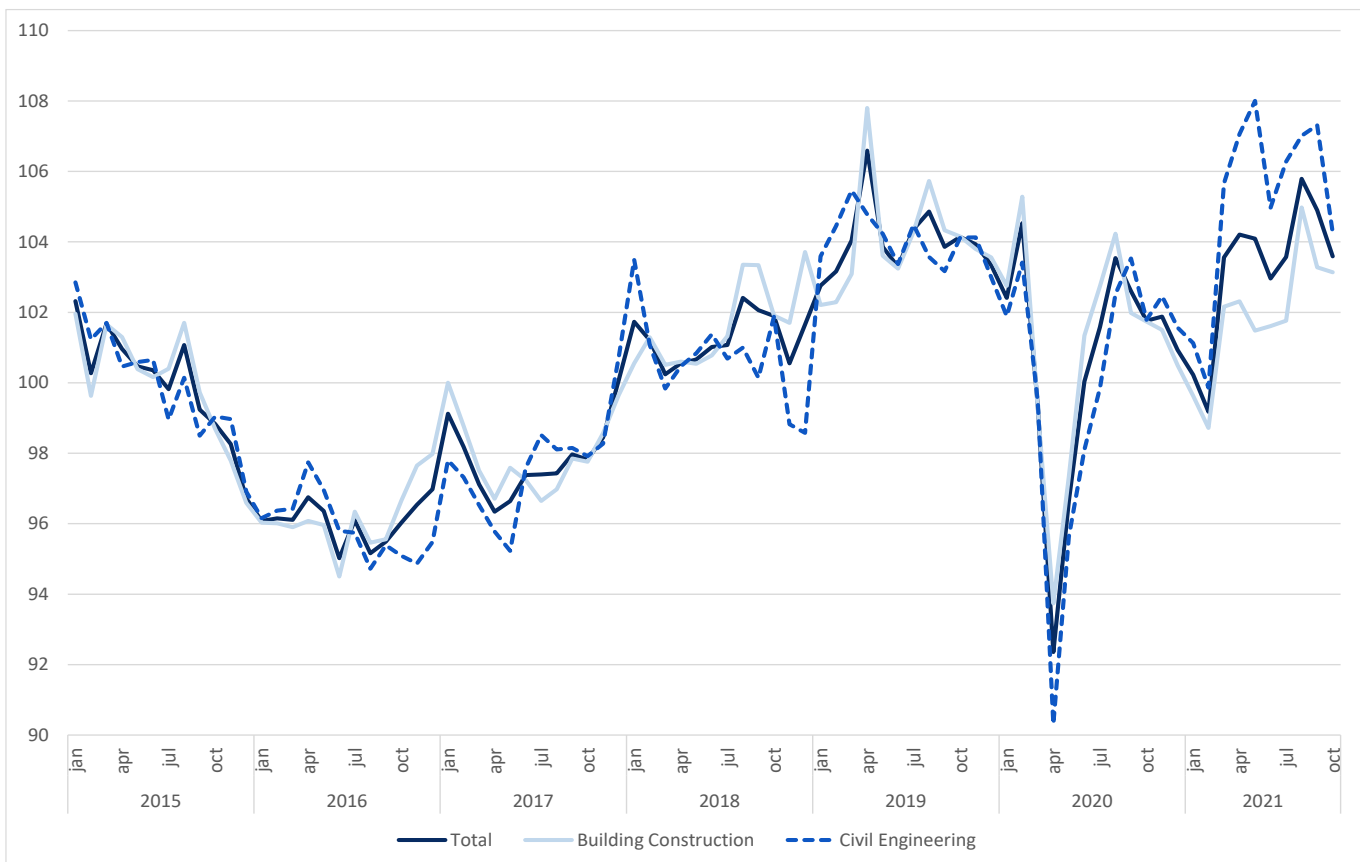
October 2021

CONSTRUCTION PRODUCTION INDEX STOOD AT 2.1%

The index of production in construction increased 2.1% in year-on-year terms, in October (3 months moving average, working days and seasonally adjusted), same change rate as in September.

Employment and wages and salaries grew 1.6% and 6.0% (2.0% and 6.2% in the previous month), respectively.

Figure 1. Indices of Production in Construction (2015=100)



Next press release – January 13th 2022