



November 12th 2021

VITAL STATISTICS – Monthly data

October 2021

MORTALITY, LIVE BIRTHS AND MARRIAGES

IN SEPTEMBER LIVE BIRTHS DECREASE BY 7.1% WHEN COMPARED TO THE HOMOLOGOUS MONTH OF 2020

In October 2021, the number of deaths was 9,314, higher than the figure registered in previous month (+749 deaths). In this month, there were 576 fewer deaths (-5.8%) than in September 2020. The number of deaths due to COVID-19 decreased to 183 (minus 39 compared to September 2021), accounting for 2.0% of the total number of deaths. The total number of deaths registered from January to October 2021 was 103,211, higher than in 2019 and 2020, respectively, in 10,318 and 4,017 deaths.

In September 2021, 7,117 children were born alive, corresponding to a reduction of 7.1%, when compared to the same month of 2020. The total number of live births registered from January to September 2021 was 58,732, lower than that recorded in the same period of 2019 and 2020, respectively, less 6,208 and 5,452 live births.

In September 2021, the natural balance was -1,427, worsening when compared with the same month of 2020, when it recorded the value of -1,331. The natural balance accumulated until September 2021 was -35,074, worse regarding the same period of 2019 (-19,150) and 2020 (-25,112).

In September 2021, 4,430 weddings were celebrated, corresponding to 1.5 times the number of marriages celebrated in September 2020 (+1,571). From January to September 2021 21,911 weddings were celebrated, 8,293 more than in same period of 2020 and 4,353 less than in the same period of 2019.

In this press release, Statistics Portugal provides **preliminary data** regarding the number of deaths, per month until October 2021 and per week until the 43rd week (October 25th to 31st), and the number of live births and marriages per month until September 2021, that occurred in the national territory, making a comparison with the homologous period. Indicators on the preliminary monthly number of live births, deaths, and marriages, from January to September 2021, with geographical breakdowns up to NUTS 3, as well as weekly number of deaths, until the 43rd week, by NUTS 3 and daily number of deaths, until October 31st, by NUTS 2 are made available on the Statistics Portugal Website.

The information is obtained through the Civil Register collected under the Integrated Civil Registration and Identification System (SIRIC) until November 9th, 2021.



Mortality increased in October compared to the previous month, but decreased again compared to the same month of 2020

January 2021 registered the highest number of monthly deaths since the beginning of the pandemic (19,671), corresponding to an increase in mortality of 65.8% (+7,809 deaths) compared to the same month of 2020. Of the total deaths, 5,785 were by COVID-19, representing 29.4% of the mortality in January and the maximum of monthly deaths due to COVID-19.

In February, mortality started to decrease, although it continued to register higher values than in the same period of 2020. However, excluding deaths by COVID-19, mortality in this month would have been situated, for the first time after the start of the pandemic, below the year-on-year value of 2020.

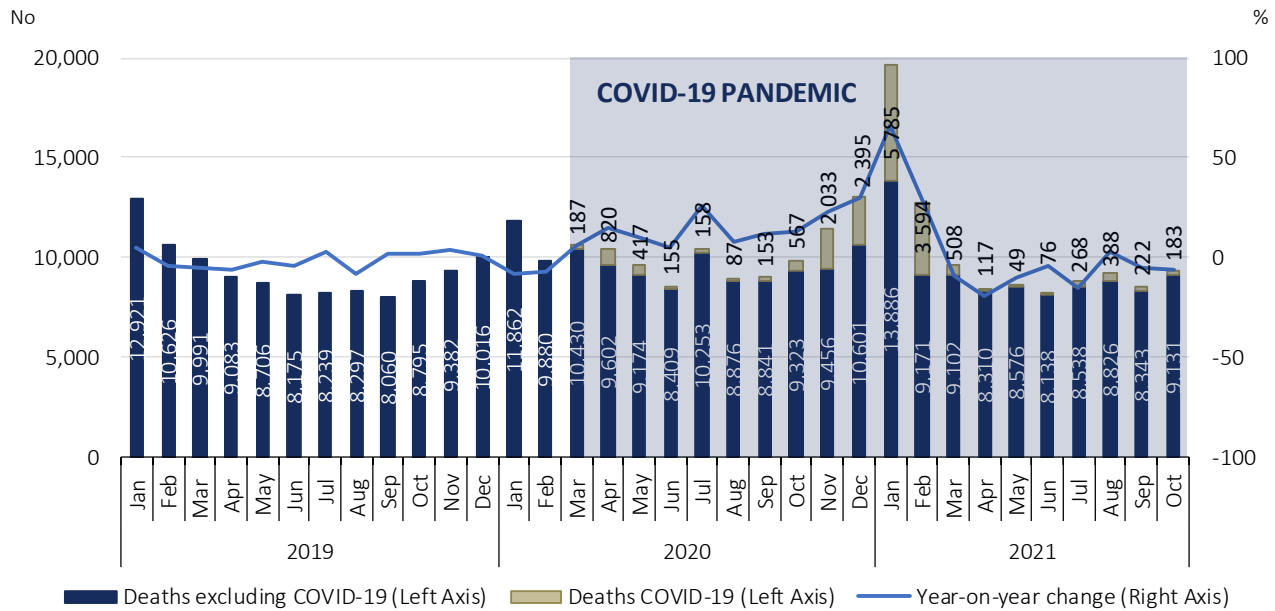
Between March and September 2021, except for the month of August, the total number of deaths continued to decrease compared to the values registered in the same months of 2020.

The number of deaths due to COVID-19 continued the downward trend, started in February, reaching the lowest number in May 2021 (49 deaths). In June, and more significantly in July and August, mortality by COVID-19 increased, decreasing again in September.

The monthly number of deaths due to COVID-19 in 2021 was, in March, higher than that registered in March 2020 (+321 deaths). However, between April and June it was below the figures registered in the same months of 2020. From July to September, the number of deaths by COVID-19 once again exceeded the values registered in the same months of 2020.

In October 2021, the number of deaths was 9,314, 749 more deaths than in the previous month. In this month, however, there was a decrease of 5,8% when compared with the same period of 2020 (576 fewer deaths). The number of deaths due to COVID-19 decreased to 183 (39 fewer deaths compared to September 2021), accounting for 2.0% of total deaths. Compared with October 2020, there was a decrease of 384 deaths due to COVID-19.

Figure 1: Deaths and year-on-year change, January 2019 to October 2021

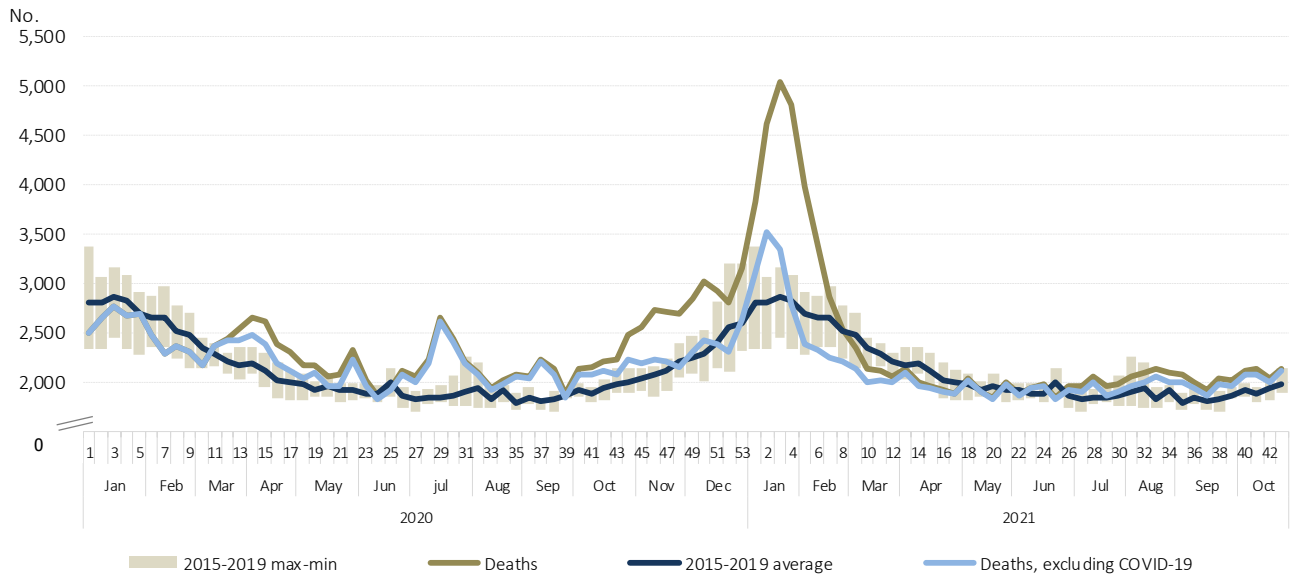


Source: Statistics Portugal, Deaths. Directorate-General of Health, Daily COVID-19 Status Report.

Analyzing weekly mortality, it was in the 3rd week of 2021 (January 18th to 24th) that the highest number of deaths (5,044) was registered since the beginning of the pandemic. However, it was in the 4th week (January 25th to 31st) that the highest number of deaths by COVID-19 (2,036) was reached.

Between October 3rd and 31st (weeks 40 to 43), the number of deaths continued above the 2015-2019 average. In week 43, there were 2,142 deaths, of which 24 were due to COVID-19, accounting for 1.1% of the total number of deaths.

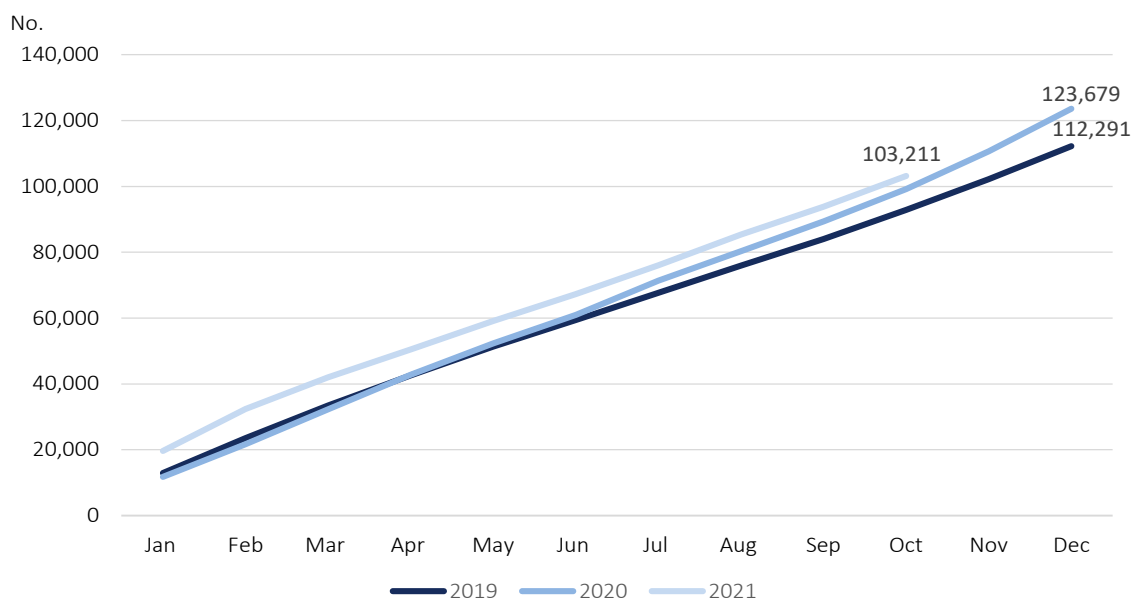
Figure 2: Deaths 2020, 2021 and average 2015-2019, by week, weeks 1 of 2020 to 43 of 2021



Source: Statistics Portugal, Deaths. Directorate-General of Health, Daily COVID-19 Status Report.

Despite the reduction in mortality observed from March 2021 compared to the same months of 2020, this did not compensate for the high number of deaths registered in January and February 2021. The total number of deaths registered from January to October 2021 was 103,211, higher than in 2019 and 2020, respectively, in 10,318 and 4,017 deaths.

Figure 3: Monthly deaths (cumulative numbers), 2019, 2020 and 2021



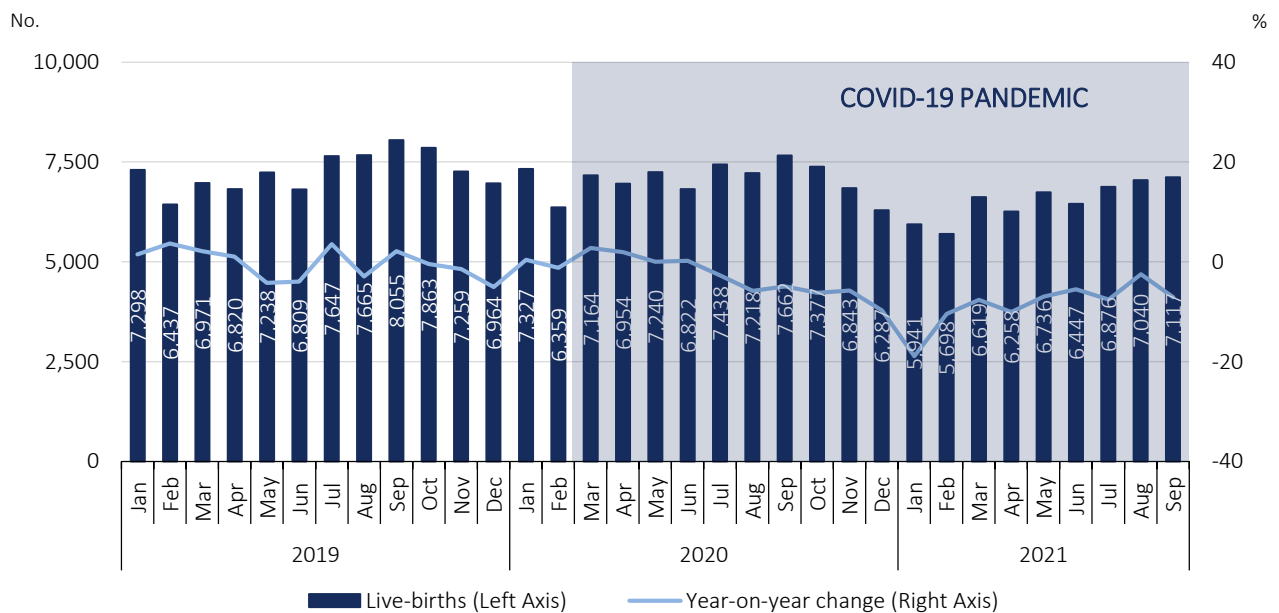
Source: Statistics Portugal, Deaths.



In September, the number of live births decreased by 7.1% when compared to the same month of 2020

In August and September 2021, 7,040 and 7,117 children were born alive, corresponding to reductions of 2.5% (-178) and 7.1% (-545) when compared to the same months of 2020. Although, in terms of year-on-year change, August had the smallest decrease since January 2021, in September there was again a negative variation, similar to the average of the 2nd quarter of 2021.

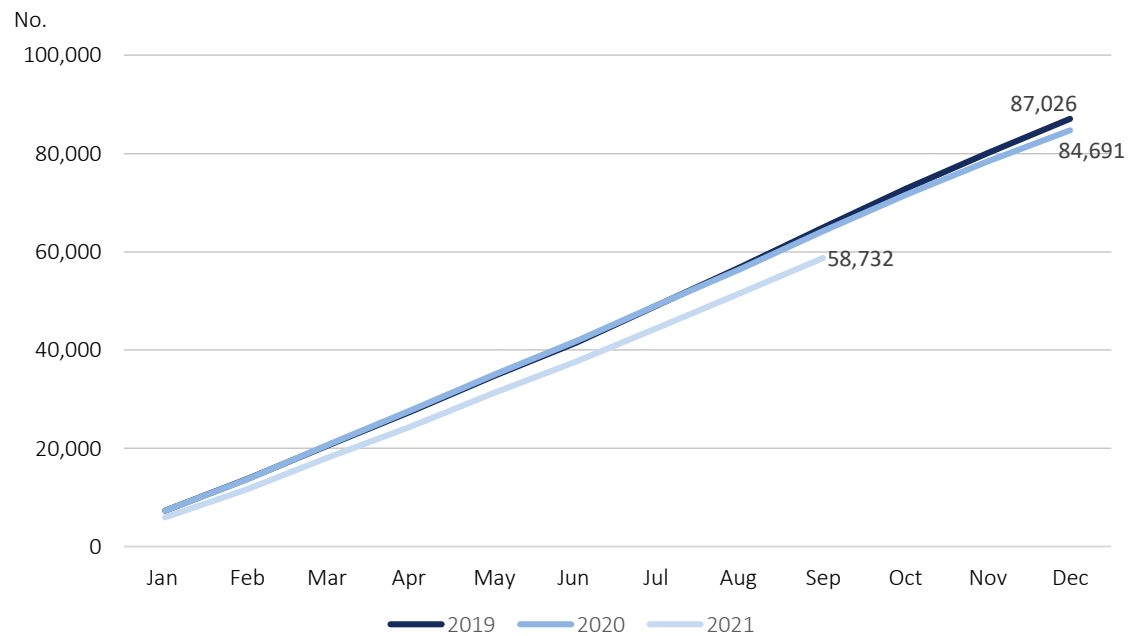
Figure 4: Live births and year-on-year change, January 2019 to September 2021



Source: Statistics Portugal, Live births.

Despite some recovery in births from March 2021, the total number of live births between January and September 2021 (58,732) was always lower than that registered in the same months 2019 and 2020, representing, respectively, a total of 6,208 and 5,452 less live births.

Figure 5: Monthly live births (cumulative numbers), 2019, 2020 and 2021



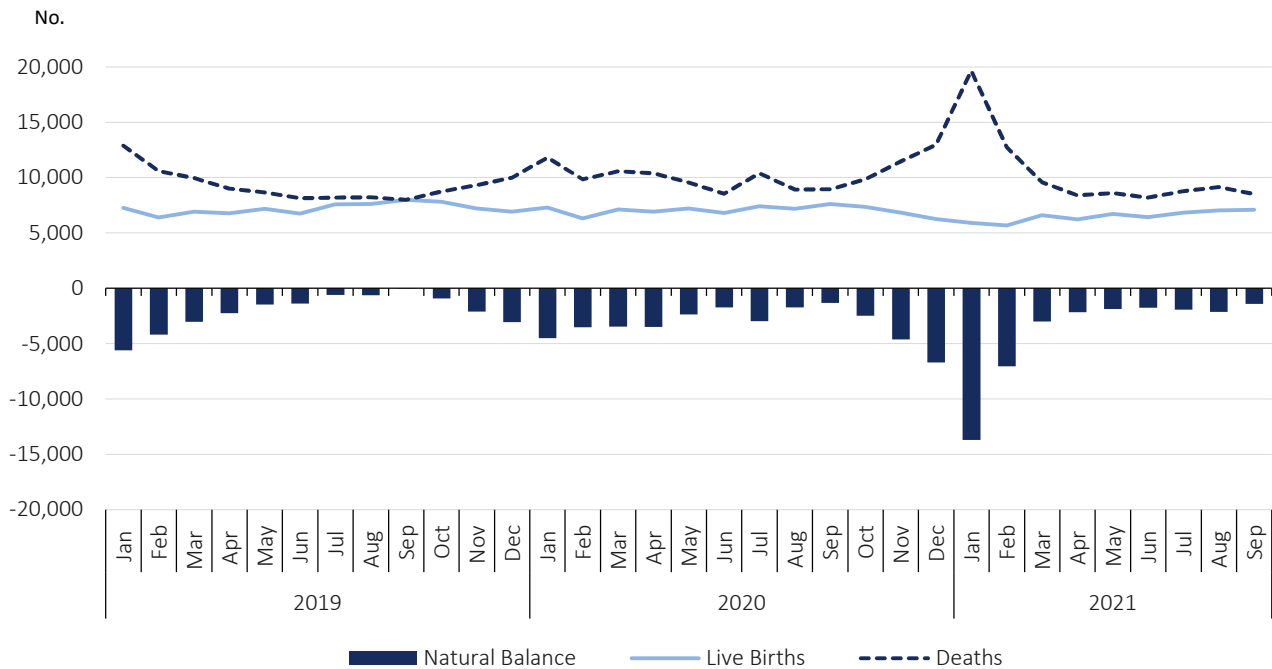
Source: Statistics Portugal, Live births.

In September the natural balance was -1,427

The increase in the number of deaths, to which mortality due to COVID-19 contributed, as well as the decrease in the number of live births, resulted in a strong reduction of the natural balance in 2020 and in the first two months of 2021. As of March 2021, the natural balance became less negative.

In August and September 2021, the natural balance registered, respectively, values of -2,131 and -1,427. The value of the natural balance recorded in September worsened when compared to that registered in the same month of 2020 (-1,331).

Figure 6: Live births, deaths and natural balance¹, January 2019 to September 2021

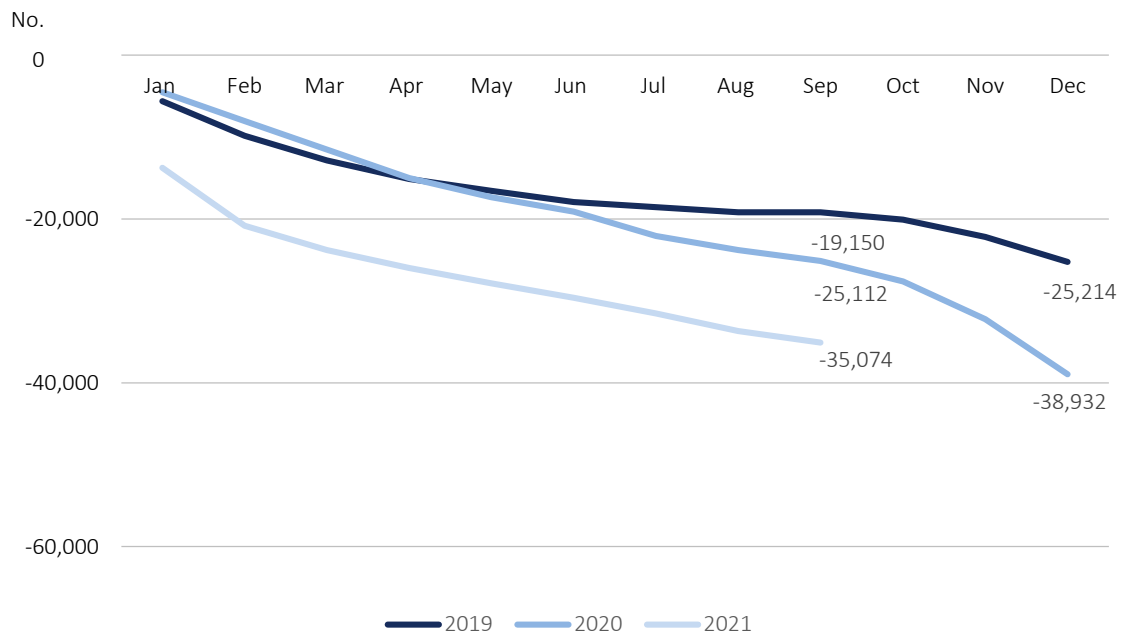


Source: Statistics Portugal, Live births, Deaths and Demographic indicators.

From January to September 2021, the accumulated value of the natural balance was -35,074, lower than the accumulated value in the same period of 2019 (-19,150) and 2020 (-25,112).

¹ The natural balance is calculated based on the number of live births of mothers residing in Portugal and the number of deaths of residents in Portugal.

Figure 7: Monthly natural balance (cumulative numbers), 2019, 2020 and 2021



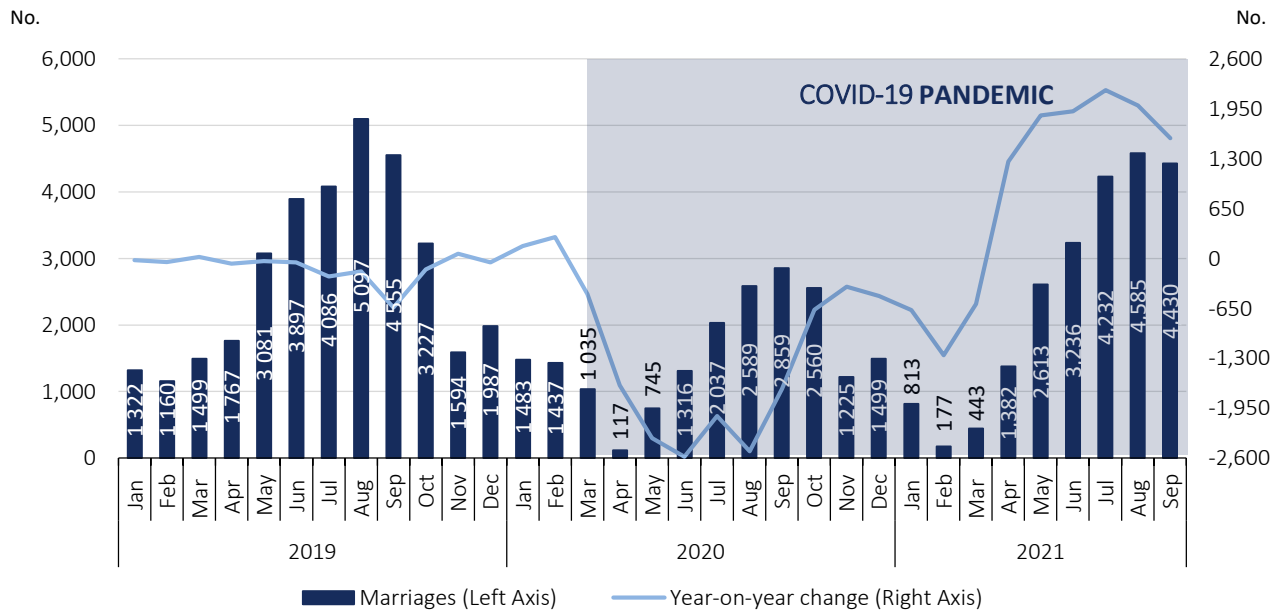
Source: Statistics Portugal, Live births, Deaths and Demographic indicators.

Marriages celebrations maintain growth trend in September

The measures resulting from the containment of the pandemic had an impact on the lives of citizens, including mobility and social contact. As such the statistical data on marriages celebrated from March 2020 onwards should be read in this context.

In August and September 2021, respectively, 4,585 and 4,430 marriages were celebrated, corresponding to 1.8 and 1.5 times the number of marriages celebrated in August and September 2020 (+1,997 and +1,571 marriages).

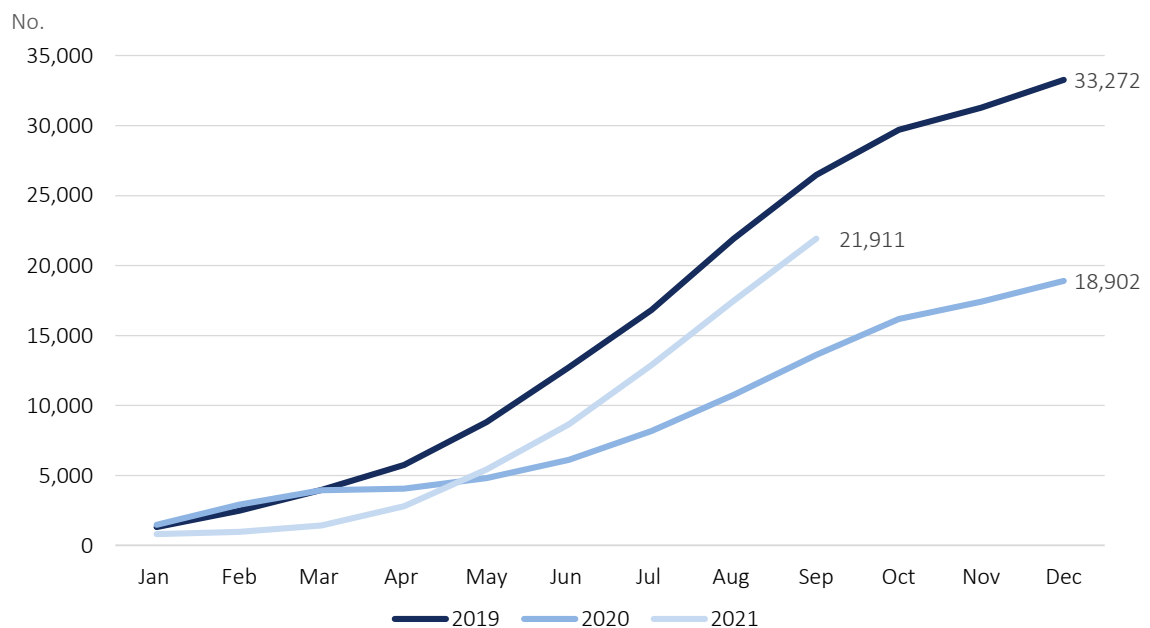
Figure 8: Marriages and year-on-year change, January 2019 to September 2021



Source: Statistics Portugal, Marriages.

From January to September 2021, 21,911 marriages were celebrated, 8,293 more than in the same period of 2020 and 4,353 less than in the same period of 2019.

Figure 9: Monthly marriages (cumulative numbers), 2019, 2020 and 2021



Source: Statistics Portugal, Marriages.



TECHNICAL NOTE

Statistics Portugal releases the preliminary weekly deaths, based on the information registered in the Civil Register Offices until November 9th, 2021. Indicators on the preliminary monthly number of live births, deaths, and marriages, from January to September 2021, with geographical breakdowns up to NUTS 3, as well as weekly number of deaths, until the 43rd week, by NUTS 3 and daily number of deaths, until October 31st, by NUTS 2 are made available on the Statistics Portugal Website. In this Press Release the total preliminary figures of live births and marriages are disclosed for the month of September 2021.

Data are obtained from statistical operations of direct and exhaustive collection on live births, deaths and marriages in Portuguese territory using facts that are subject to compulsory civil registration (birth and death) in the Sistema Integrado do Registo e Identificação Civil (SIRIC).

In addition to administrative information obtained from Civil Register Offices, Statistics Portugal collects an additional set of variables identified as statistically pertinent to the National Statistic System (NSS) and the European Statistical System (EES). Data is recorded and sent electronically, in compliance with the requirements set out by Statistics Portugal and laid down in liaison with the Instituto de Registos e Notariado (IRN) and the Instituto de Gestão Financeira e Equipamentos da Justiça (IGFEJ).

Data on the number of deaths by COVID-19 are also used, whose source is the daily situation report COVID-19 of the Directorate-General for Health that provides only a partial measure of the pandemic on mortality.

DEFINITIONS

Marriage: Contract signed by two persons that intend to start a family in full partnership and cohabitation according to legislation. Note: marriage can be held between persons from different or same sex.

Live birth: This is the complete expulsion or extraction from the mother's body, irrespective of the duration of the pregnancy, of a product of fertilization that, after separation, breathes or shows any other signs of life, such as a beating of the heart or umbilical cord or actual contraction of any muscle subject to voluntary movement, whether the umbilical cord has been severed and whether the placenta is retained.

Death: The permanent disappearance of vital functions.

Natural balance: The difference between the number of live births and the number of deaths during a given period, usually a calendar year.

Year-on-year change: The year-on-year change compares the level of a variable between the reference month and the same month of the previous year.

Detailed methodological information available at: www.ine.pt, option Products, Metadata system.

Detailed statistical information available at: www.ine.pt, option Products, Statistical data, database, theme Population, subtheme Births and natality rates and subtheme Mortality and life expectancy.