



8 October 2021

Indices of Production, Employment and Wages in Construction

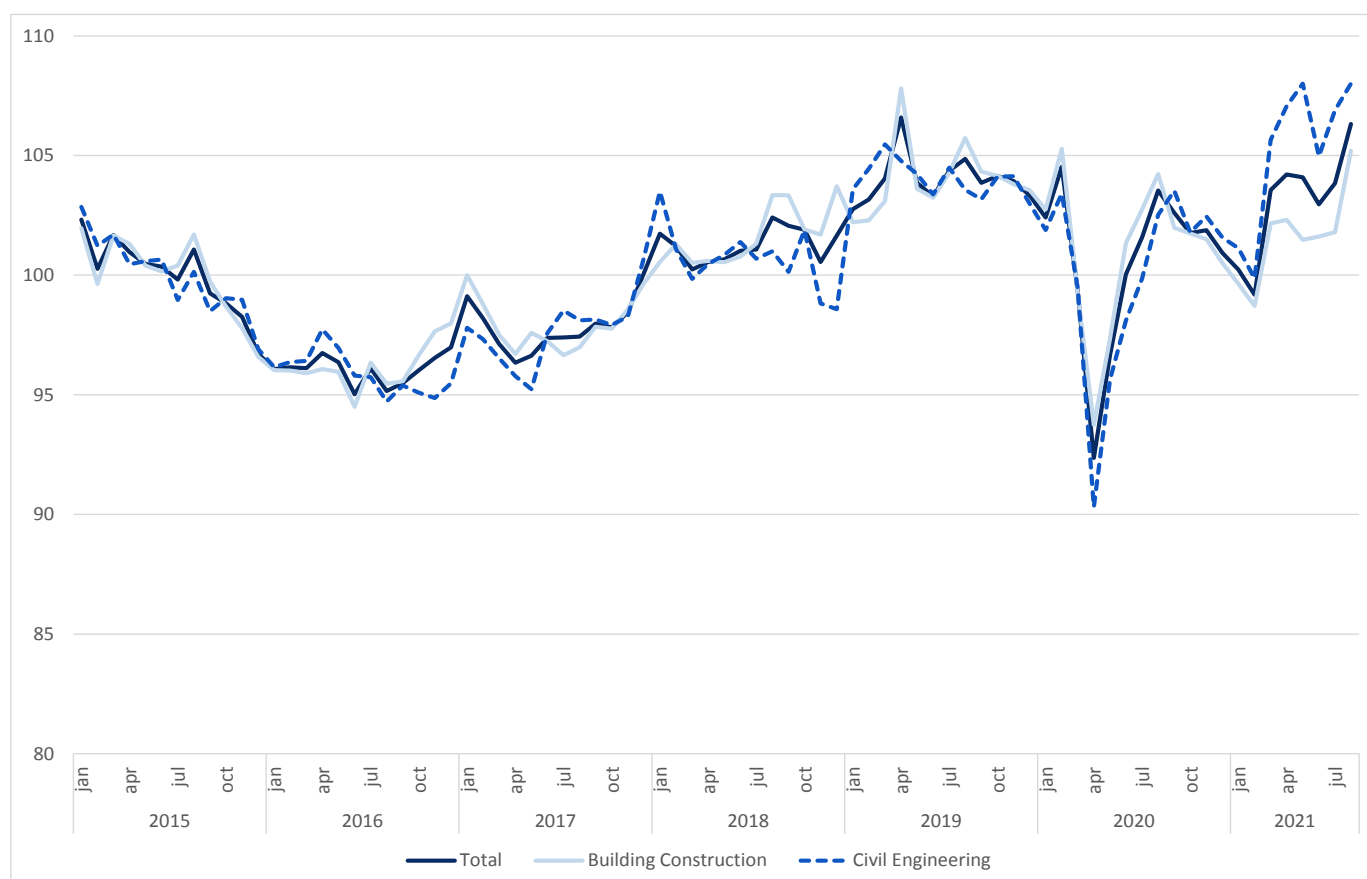
August 2021

CONSTRUCTION PRODUCTION INDEX INCREASED 2.6%

The index of production in construction increased 2.6% in year-on-year terms (3 months moving average, working days and seasonally adjusted), slowing down by 1.6 percentage points from June.

Employment and wages and salaries change rates stood at 1.6% and 5.8% (2.0% and 5.6% in the previous month), respectively.

Figure 1. Indices of Production in Construction (2015=100)



Next press release – 10 November 2021