

17 March 2021

Transport Activities

January 2021 – Air Transport Flash Statistics

Significant decrease in passenger air transport in the beginning of 2021

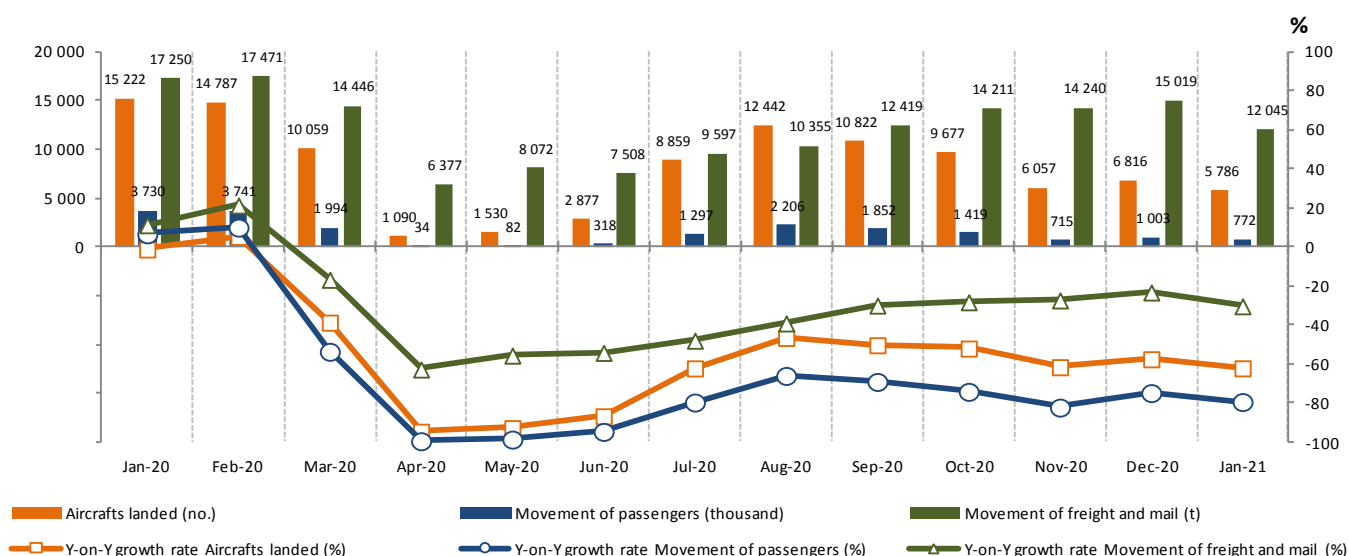
In **January 2021** there was a movement of 772 thousand passengers at national airports, representing a year-on-year decrease of 79.3% (-74.7% in December). The movement of freight and mail totalled 12.0 thousand tonnes, corresponding to a decrease of 30.2% (-23.1% in December).

France was the main country of origin and destination of flights with passengers.

Despite the circumstances determined by the COVID-19 pandemic, Statistics Portugal calls for the best collaboration by companies, families and public entities in responding to Statistics Portugal’s data requests. The quality of official statistics, particularly its ability to identify the impacts of the COVID-19 pandemic, crucially depends on this collaboration, which Statistics Portugal thanks in advance.

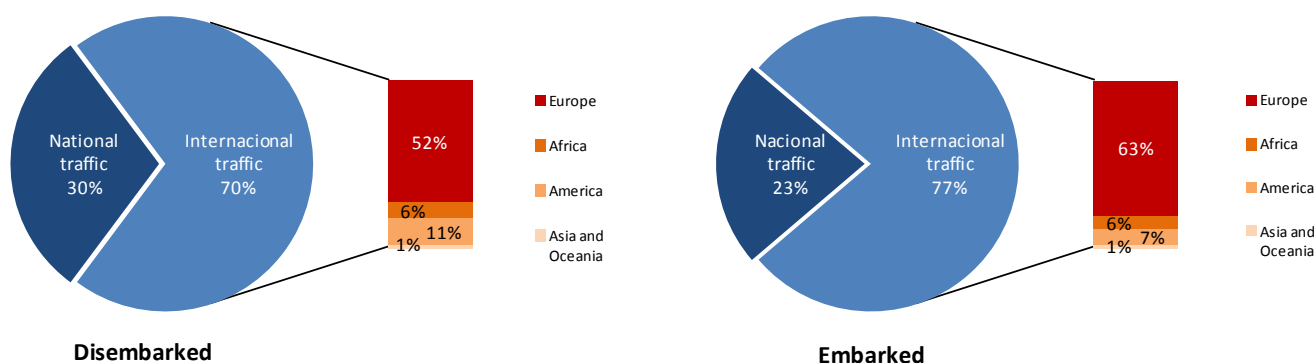
In **January 2021**, 5.8 thousand commercial aircrafts landed at national airports, representing a year-on-year rate of change of -62.0% (-57.3% in December and -61.4% in November). There was a movement of 772 thousand passengers (embarked, disembarked and direct transits), representing a year-on-year rate of change of -79.3% (-74.7% in December and -82.1% in November). The movement of freight and mail at national airports totalled 12.0 thousand tonnes, corresponding to a decrease of 30.2% (-23.1% in December and -27.2% in November).

Figure 1 – Aircrafts landed, passengers and freight/mail movement at national airports



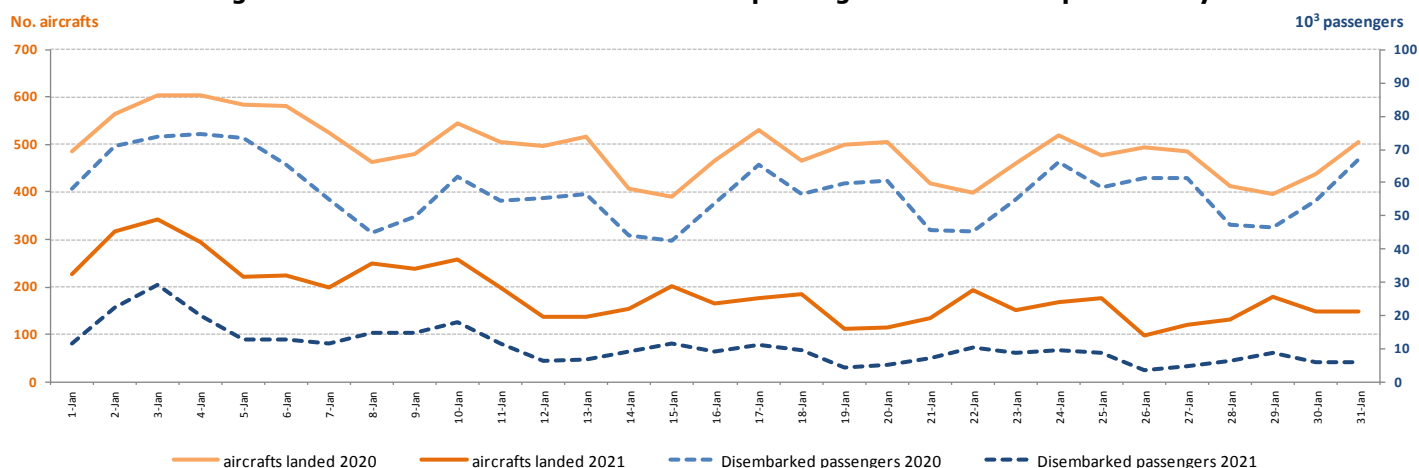
Considering the total number of passengers disembarked at national airports in January 2021, around 70% corresponded to international traffic (82% in the same period last year), the majority coming from airports located at the European continent (52%). Regarding embarked passengers, about 77% are associated with international traffic (83% in the same period last year), with the main destination being airports located at the European continent (63%).

Figure 2 – Proportion of passengers disembarked and embarked in national airports by nature of traffic – January 2021



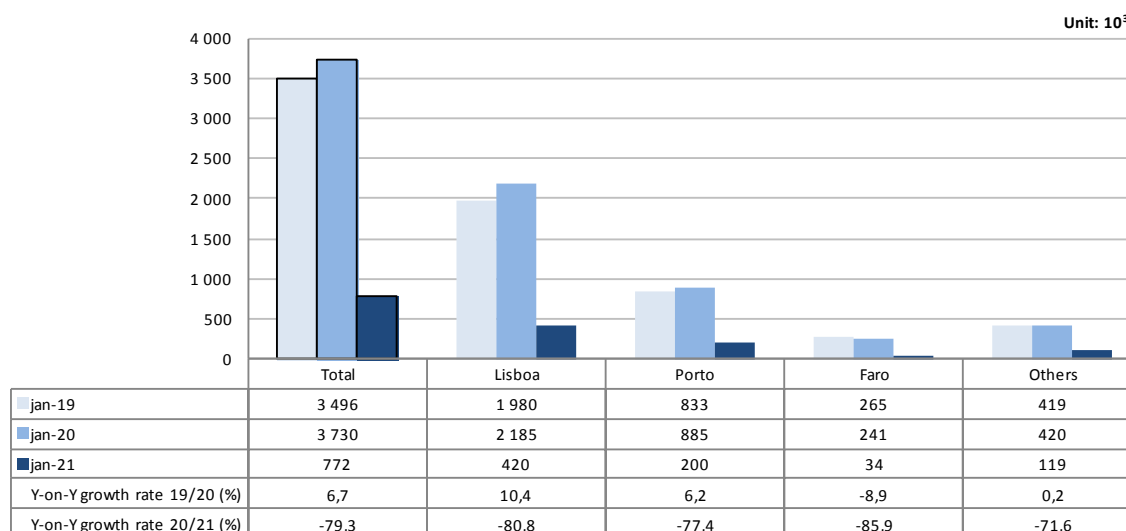
Comparing the number of aircrafts landed and the number of passengers daily disembarked in January 2021 with the same month of 2020, there were daily reductions of more than 40% in the number of aircraft landed and 60% in the number of passengers disembarked.

Figure 3 – Aircrafts landed and disembarked passengers in national airports – daily



In **January 2021**, the movement of passengers in Lisboa airport corresponded to 54.3% of total handled passengers (420 thousand) and recorded a decrease of 80.8%. Considering the three airports with the highest annual passenger traffic, Faro recorded the major decrease in the movement of passengers in January (-85.9%). It is important to highlight that Madeira airport (at Madeira Island) was the 3rd airport with the highest passenger traffic (52.6 thousand, -76.6%), surpassing Faro airport.

Figure 4 – Movement of passengers at national airports



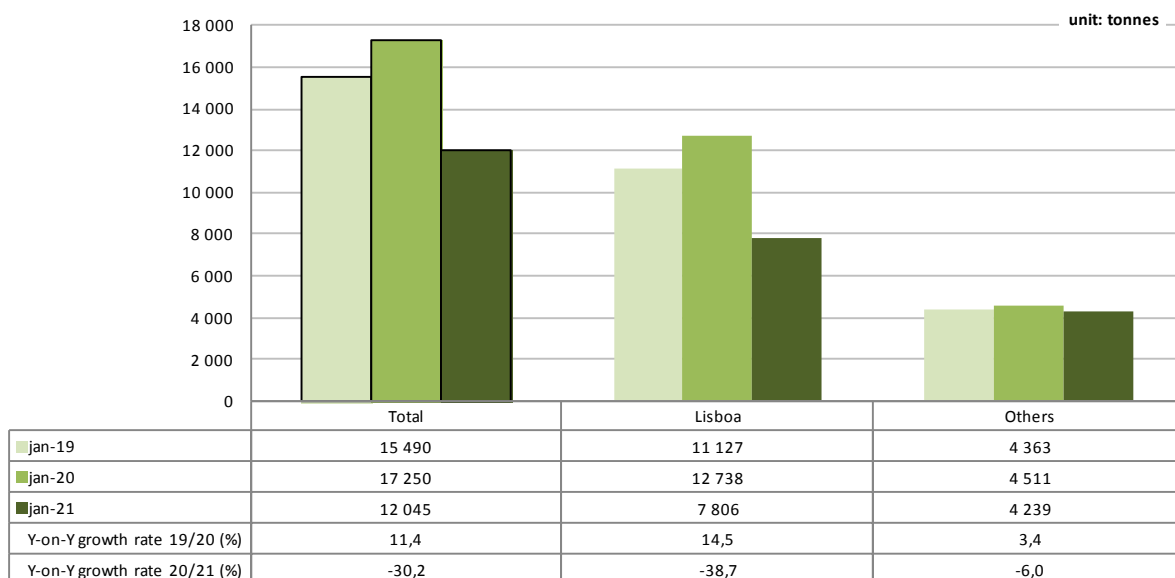
Considering the volume of passengers disembarked and embarked on international flights in January 2021, France was the main country of origin and destination of flights. Brazil was the second main country of origin and the 4th of destination. Switzerland was the 3rd main country of origin and the 2nd of destination. Spain recorded the major reductions in both indicators and occupied the 5th position. The United Kingdom no longer appears in this set of main countries of origin and destination.

Figure 5 – Main country of origin and destination of flights with passengers at national airports

Ranking	Country of origin (of the flight)	Jan - 2021		Ranking	Country of destination (of the flight)	Jan - 2021	
		Passengers disembarked (10 ³)	Y-on-Y growth rate (%)			Passengers embarked (10 ³)	Y-on-Y growth rate (%)
1	France	54,4	-76,1	1	France	86,5	-65,3
2	Brazil	30,9	-71,6	2	Switzerland	38,8	-56,3
3	Switzerland	21,3	-70,2	3	Germany	36,6	-75,2
4	Germany	18,8	-84,6	4	Brazil	22,7	-77,0
5	Spain	18,0	-91,4	5	Spain	20,8	-90,5

In January 2021, the movement of freight and mail at Lisboa airport represented 64.8% of the total, corresponding to 7.8 thousand tonnes (-38.7% compared with the same period of previous year). The aggregate of other airports decreased by 6.0%.

Figure 6 – Freight and mail movement at national airports



EXPLANATORY NOTES

In this Press Release the following statistical data are used:

January 2019: definitive results;
January 2020: provisional results;
January 2021: preliminary results.

Main national airports (considered in this Press Release as national airports): Lisboa, Porto, Faro, Ponta Delgada, Funchal, Porto Santo, Beja, Horta, Flores, Santa Maria, Terceira (Lajes), Pico, Graciosa, São Jorge, Corvo, Portimão, Bragança, Cascais and Viseu.
Note: Vila Real remains closed.

SOURCES: Airports and airfields survey (ANAC/ANA/Statistics Portugal)

MAIN CONCEPTS:

Commercial aviation - Air transport flight performed for the public transport of passengers, freight or mail, for remuneration and for hire.

Commercial air traffic - Movement of aircrafts, passengers, freight and mail in commercial aviation.

Monthly indicators at Statistics Portugal portal:

[Aircrafts landed \(No.\) in airports by Geographic localization, Type of traffic and Nature of traffic; Monthly](#)
[Aircrafts landed \(No.\) in airports by Continent of origin; Monthly](#)
[Aircrafts unglued \(No.\) in airports by Geographic localization, Type of traffic and Nature of traffic; Monthly](#)
[Disembarked passengers \(No.\) in airports by Geographic localization, Type of traffic and Nature of traffic; Monthly](#)
[Disembarked passengers \(No.\) in Airports by Continent of origin; Monthly](#)
[Embarked passengers \(No.\) in airports by Geographic localization, Type of traffic and Nature of traffic; Monthly](#)
[Embarked passengers \(No.\) in airports by Destination continent; Monthly](#)
[Passengers in direct transit \(No.\) in airports by Geographic localization, Type of traffic and Nature of traffic; Monthly](#)
[Disembarked load \(t\) in airports by Geographic localization, Type of traffic and Nature of traffic; Monthly](#)
[Embarked load \(t\) in airports by Geographic localization, Type of traffic and Nature of traffic; Monthly](#)
[Disembarked mail \(t\) in airports by Geographic localization, Type of traffic and Nature of traffic; Monthly](#)
[Embarked mail \(t\) in airports by Geographic localization, Type of traffic and Nature of traffic; Monthly](#)

Next Press Release "Air Transport Flash Statistics": April 19, 2021

Next Press Release "Transport activities" (1stQ 2021): June 7, 2021