

17 November 2020

Transport Activities

September 2020 – Air Transport Flash Statistics

---

### Reversal of the recovery trend in the movement of passengers

**In September 2020** there was a movement of 1.9 million passengers at national airports, representing a decrease of 69.0%<sup>1</sup> (-65.9% in August). The movement of freight and mail totalled 12.4 thousand tonnes, corresponding to a decrease of 29.8% (-39.0% in August).

The number of passengers disembarked at national airports on flights from the United Kingdom decreased by 73.9% (-69.1% in August). Between August 21 and September 10, period during which the United Kingdom included Portugal in the safe travel list, there was a lower reduction in the number of passengers disembarking at national airports on flights from the United Kingdom (-53.5%), when compared to the decreased recorded in the accumulated of the remaining days of August and September (-80.2%).

**Despite the circumstances determined by the COVID-19 pandemic, Statistics Portugal calls for the best collaboration by companies, families and public entities in responding to Statistics Portugal's data requests. The quality of official statistics, particularly its ability to identify the impacts of the COVID-19 pandemic, crucially depends on this collaboration, which Statistics Portugal thanks in advance.**

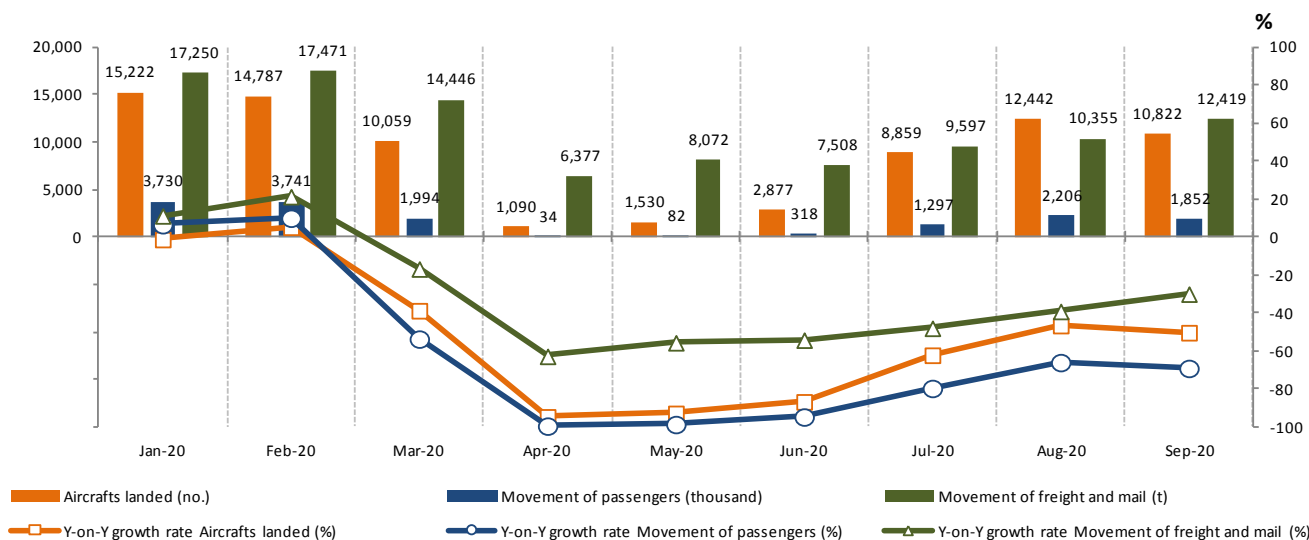
---

**In September 2020**, 10.8 thousand commercial aircrafts landed at national airports, representing a year-on-year growth rate of -50.2% (-46.4% in August and -62.0% in July). There was a movement of 1.9 million passengers (embarked, disembarked and direct transits), representing a year-on-year growth rate of -69.0% (-65.9% in August and -79.5% in July). The movement of freight and mail at national airports totalled 12.4 thousand tonnes, corresponding to a decrease of 29.8% (-39.0% in August and -47.8% in July).

---

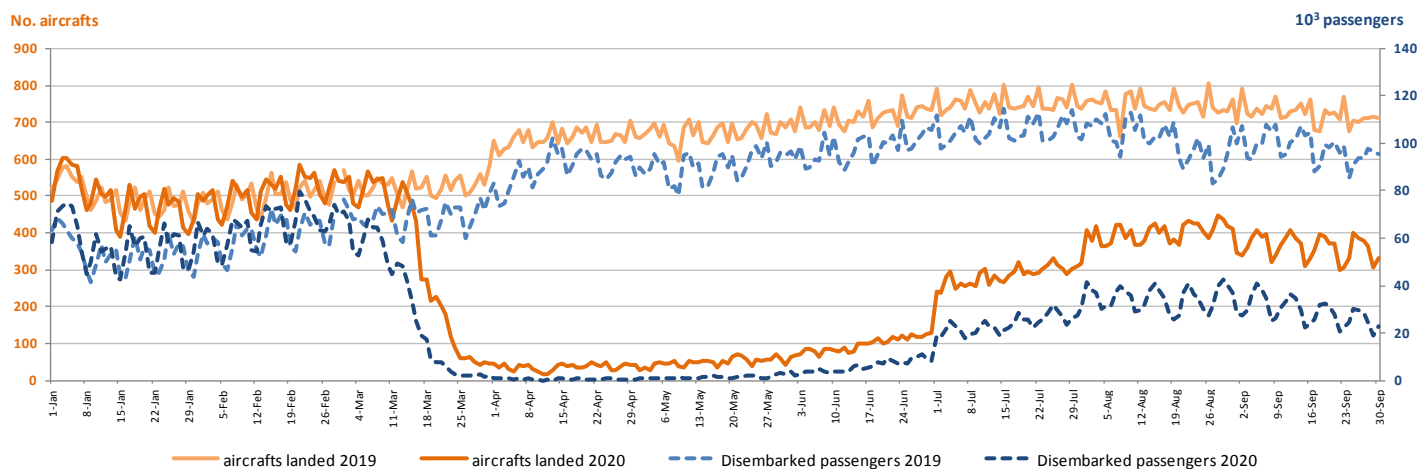
<sup>1</sup> Unless stated otherwise, the rates of change presented in this press release are year-on-year rates of change.

**Figure 1 – Aircrafts landed, passengers and freight/mail movement at national airports**



Considering the number of aircrafts landed and the number of passengers daily disembarked between January and September 2020, and comparing with the same period of the previous year, is visible the impact of the COVID-19 pandemic and the measures adopted at the airspace level from the beginning of the second fortnight of March. Despite the recovery verified in July and August, in September there was a reversal of the trend, with daily reductions of more than 40% in the number of aircraft landed and 60% in the number of passengers disembarked.

**Figure 2 – Aircrafts landed and disembarked passengers in national airports – daily**

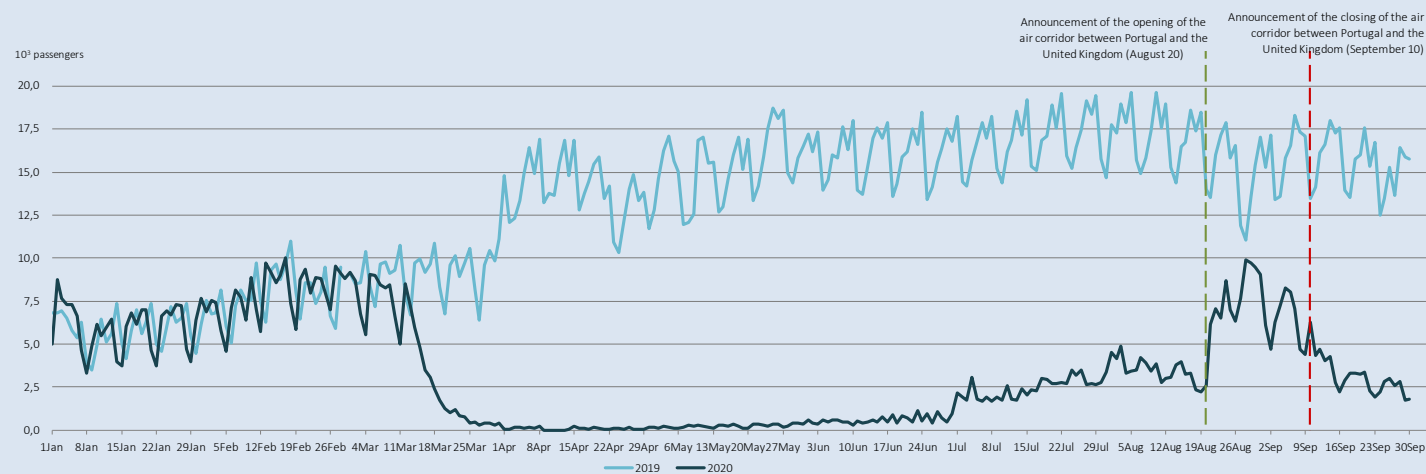


### Daily movement of passengers from the United Kingdom

After the impact of the COVID-19 pandemic and the measures adopted at the airspace level from the beginning of the second fortnight of March, between April and June there were reductions of more than 90% in the number of passengers disembarked at national airports on flights from the United Kingdom. The number of passengers disembarked decreased by 85.5% in July, by 69.1% in August and by 73.9% in September.

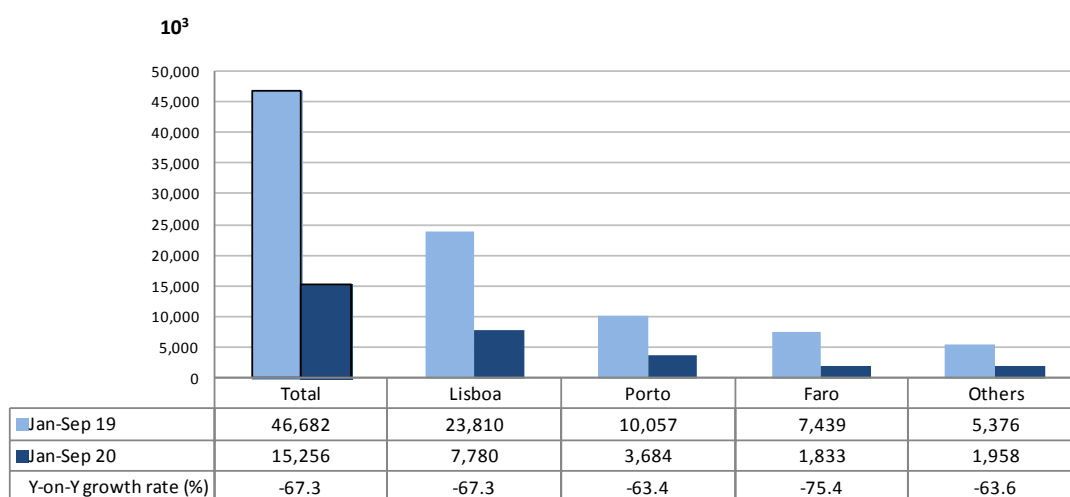
Between August 21 and September 10, opening and closing announcement dates of the air corridor between Portugal and the United Kingdom, the decrease in the number of passengers disembarking at national airports on flights from the United Kingdom was 53.5%, evolution that contrasts with the decrease registered in the accumulated of the remaining days of the months of August and September (-80.2%). In the period between the two announcements, disembarked, at national airports, 53.8% of the total passengers on flights from the United Kingdom in August and September 2020 (33.1% in the same period of 2019). Faro airport concentrated 63.4% (58.8% in 2019) of passengers flying from the United Kingdom between August 21 and September 10.

**Figure 3 – Disembarked passengers at national airports on flights from the United Kingdom – daily**



Between January and September 2020, 77.7 thousand commercial aircraft landed at national airports (-55.9% compared to the same period in the previous year) and 15.3 million passengers were handled (-67.3%). The movement of passengers in Lisboa airport corresponded to 51.0% of total handled passengers (7.8 million) and recorded a decrease of 67.3%. Considering the three airports with the highest passenger traffic, Faro airport recorded the greatest decrease in the movement of passengers in this period (-75.4%).

**Figure 4 – Movement of passengers at national airports**



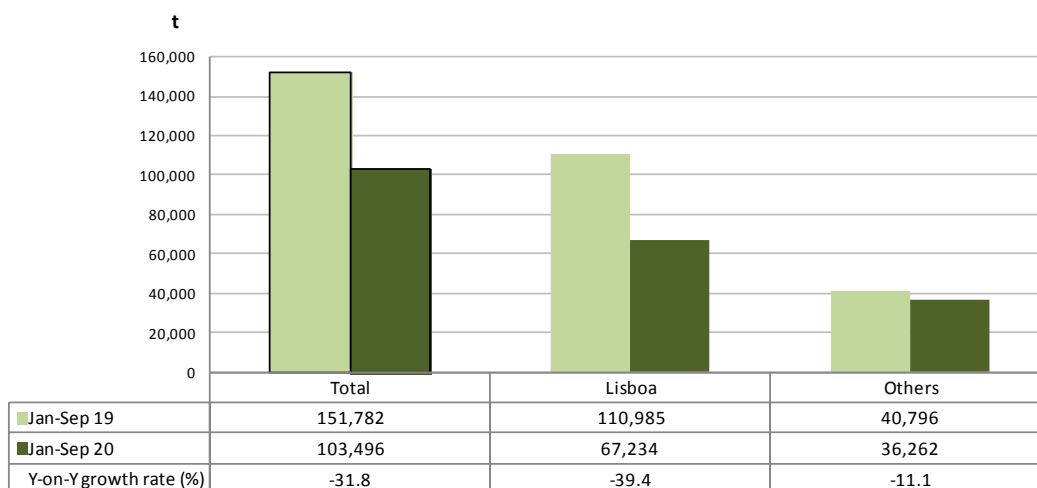
Between January and September 2020, and considering the volume of passengers disembarked and embarked on international flights, France was the main country of origin and destination of flights. The United Kingdom was the second main country of origin and destination and showed the major reduction in the number of passengers disembarked and embarked compared to the same period in the previous year (-73.9% and -72.9%, respectively). There were no changes in the ranking of the top 5 countries of origin or destination of flights, compared to the period from January to August.

**Figure 5 – Main country of origin and destination of flights with passengers at national airports**

Ranking	Country of origin (of the flight)	Jan to Sep 20		Ranking	Country of destination (of the flight)	Jan to Sep 20	
		Passengers disembarked (10 <sup>3</sup> )	Y-on-Y growth rate (%)			Passengers embarked (10 <sup>3</sup> )	Y-on-Y growth rate (%)
1.º	France	1,161.7	-61.6	1.º	France	1,168.8	-61.1
2.º	United Kingdom	929.6	-73.9	2.º	United Kingdom	959.4	-72.9
3.º	Germany	712.5	-64.6	3.º	Germany	740.0	-63.3
4.º	Spain	634.4	-70.4	4.º	Spain	645.9	-69.6
5.º	Switzerland	394.1	-53.7	5.º	Switzerland	415.3	-51.4

Between January and September 2020, there was a decrease of 31.8% in freight and mail movement at national airports, reaching 103.5 thousand tonnes. The movement of freight and mail at Lisboa airport represented 65.0% of the total, corresponding to 67.2 thousand tonnes (-39.4% compared to the same period in the previous year).

**Figure 6 – Freight and mail movement at national airports**



**EXPLANATORY NOTES**

In this "Press Release" the following statistical data are used:

January to September 2019: Definitive results;  
January to September 2020: Preliminary results.

**SOURCES:** Autoridade Nacional de Aviação Civil and ANA – Aeroportos de Portugal, S.A.

**MAIN CONCEPTS:**

**Commercial aviation** - Air transport flight performed for the public transport of passengers, freight or mail, for remuneration and for hire.

**Commercial air traffic** - Movement of aircrafts, passengers, freight and mail in commercial aviation.

Next Press Release "Air Transport Flash Statistics": December 18, 2020

Next Press Release "Transport activities" (3<sup>rd</sup> Q 2020): December 2, 2020