

31 August 2020

## Monthly Employment and Unemployment Estimates

July 2020

**In June, the employed population increased by 0.3%, the unemployment rate increased by 1.4 percentage points and the labour underutilisation rate increased by 0.9 percentage points**

June 2020 – definitive estimates:

- The employed population has changed by +0.3% from the previous month and by -3.0% from three months before and by -3.4% from the same month of 2019<sup>1</sup>.
- The unemployment rate (concept of the International Labour Organization, ILO) stood at 7.3%, 1.4 percentage points (pp) more than in the previous month, 1.1 pp more than three months before and 0.7 pp more than in the same month of the previous year.
- The labour underutilisation rate<sup>2</sup> was estimated at 15.5%, up 0.9 pp from the previous month, up 3.1 pp from three months before and up 2.5 pp from the same month of 2019.

July 2020 – provisional estimates:

- The employed population has changed by +0.1% from the previous month, by -1.7% from three months before and by -3.5% from the same month of 2019.
- The unemployment rate (ILO concept) stood at 8.1%, up 0.8 pp from the previous month, up 1.8 pp from three months before and up 1.6 pp from the same month of the previous year.
- The labour underutilisation rate was estimated at 15.7%, 0.2 pp more than in the previous month, 2.3 pp more than three months before and 2.8 pp more than in the same month of 2019.
- The monthly increase of the labour underutilisation rate in this month was exclusively due to the increase of unemployment and of underemployment of part-time workers, given that the number of inactive seeking work but not immediately available and of inactive available but not seeking work have both decreased (see section 3, page 7).

The information in this Press Release is influenced by the current situation determined by the pandemic COVID-19, either by the natural disturbance associated with the impact of the pandemic in obtaining primary information or by the behavioural changes resulting from the measures adopted to safeguard public health (for more, see page 7). For these reasons, Statistics Portugal advises special care in the analysis of the provisional estimates.

Despite the circumstances, Statistics Portugal will try to maintain the statistical production and release calendar, although some adjustments might occur. We reinforce our call for better collaboration by citizens, private and public entities in answering to Statistics Portugal's requests. The quality of official statistics, particularly its ability to identify the impacts of the COVID-19 pandemic, depends crucially on this collaboration that Statistics Portugal is grateful for in advance.

<sup>1</sup> In the estimates published on this Press Release, obtained as described in the Technical Note (annex), it was considered the population aged 15 to 74 and the values were seasonally adjusted (unless otherwise stated).

<sup>2</sup> For a more detail definition of these indicators, read the publication "*Estatísticas do Emprego – 2.º trimestre de 2012*" (only available in Portuguese) – chapter 4 (Concepts) and 6 (Theme under analysis) available at: <http://www.ine.pt/xurl/pub/143643471>. The labour underutilisation is used by the International Labour Organization (ILO) as a suplementar indicator of the official unemployment rate, maintaining the unemployment rate concept unchanged (<https://ilostat.ilo.org>).

Monthly Employment and Unemployment Estimates								
Main indicators								
	Unit	Seasonally adjusted data						
		Jun 2019	Jul 2019	Mar 2020	Apr 2020	May 2020	Jun 2020	Jul 2020 (p)
Active population (15 to 74)		5,173.1	5,178.8	5,129.6	5,070.3	4,944.9	5,038.9	5,081.0
Employed population (15 to 74)		4,832.2	4,843.0	4,812.4	4,751.5	4,655.3	4,668.6	4,671.3
Unemployed population (15 to 74)	Thousands	340.9	335.8	317.2	318.8	289.6	370.3	409.7
Inactive population (15 to 74)		2,595.7	2,589.3	2,649.8	2,709.7	2,835.5	2,741.8	2,700.8
Labour underutilisation (15 to 74)		698.8	693.8	663.6	713.8	772.1	828.8	841.8
Activity rate (15 to 74)		66.6	66.7	65.9	65.2	63.6	64.8	65.3
Employment rate (15 to 74)		62.2	62.3	61.9	61.1	59.8	60.0	60.0
Unemployment rate (15 to 74)	%	6.6	6.5	6.2	6.3	5.9	7.3	8.1
Inactivity rate (15 to 74)		33.4	33.3	34.1	34.8	36.4	35.2	34.7
Labour underutilisation rate (15 to 74)		13.0	12.9	12.4	13.4	14.6	15.5	15.7

Source: Statistics Portugal, Labour Force Survey.

Note: (p) - Provisional estimates.

## 1. Introduction

The transition from state of emergency to state of calamity and, since July, to state of alert, for the generality of the country, dictated some normalization of the labour market due to the easing of restrictions on people's mobility and business activity and had expression in the results of monthly employment and unemployment statistics. From February and June (definitive estimates) the employed population decreased 3.5% (170.1 thousand) and in the same time span the unemployed population increased by 11.7% (38.7 thousand) resulting in an increase by 0.9 pp of the unemployment rate and by 3.1 pp of the labour underutilisation rate, that stood, in June, at 15.5%, encompassing 828.8 thousand people, of which 370.3 thousand unemployed and 286.1 thousand inactive available but not seeking work. This indicator is a broader measure than the official unemployment rate by including in addition to unemployment population, the underemployment of part-time workers, the inactive seeking work but not immediately available, and the inactive available but not seeking work.

This Press Release is organised as follows: in the next section the estimates for the quarters centred in June (definitive estimates) and July (provisional estimates) are analysed; in the last section the impact of the COVID-19 pandemic on the results of the Labour Force Survey is further discussed.

## 2. Monthly estimates analysis

### A. Active population and activity rate

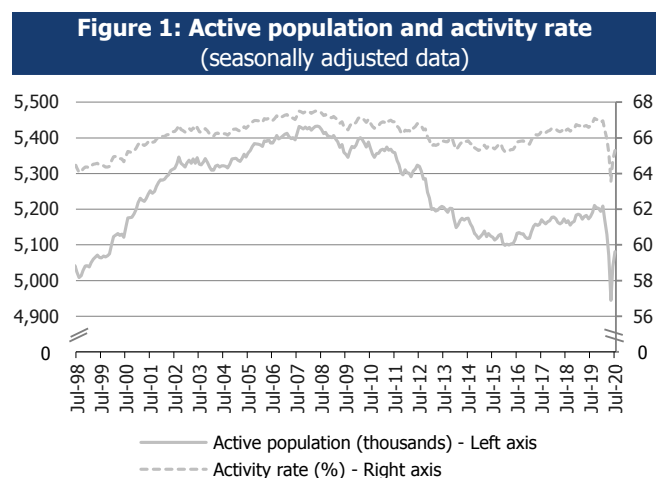
In June 2020, the active population – estimated at 5,038.9 thousand people – has increased by 1.9% (94.0 thousand) from the month before, decreased by 1.8% (90.7 thousand) from March of the same year

and by 2.6% (134.2 thousand) from June 2019.

In July 2020, the provisional estimate of the active population stood at 5 081.0 thousand people, having increased by 0.8% (42.1 thousand) from the month

before, by 0.2% (10.7 thousand) from three months before and decreased by 1.9% (97.8 thousand) from the same month of 2019.

The activity rate that stood at 65.3% increased by 0.5 pp when compared to the previous month and by 0.1 pp from three months before and decreased by 1.4% from the same month of the year before.



**Note:** The July 2020 estimates are provisional.

## B. Employed population and employment rate

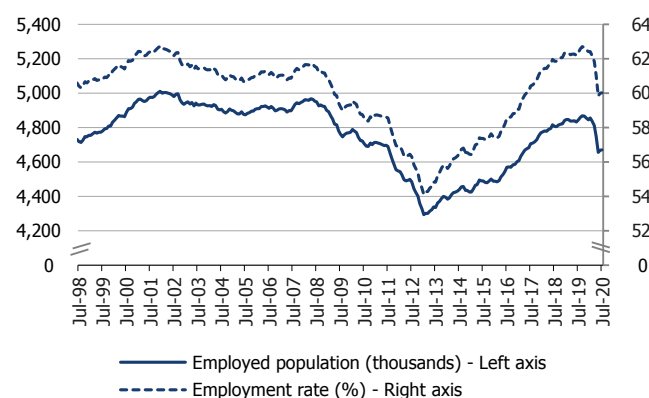
In June 2020, the employed population estimate was 4,668.6 thousand people, having increased by 0.3% (13.3 thousand) from the previous month and decreased by 3.0% (143.8 thousand) from March 2020 and by 3.4% (163.6 thousand) from June 2019.

In July 2020, the provisional estimate for the employed population, which stood at 4,671.3 thousand people, has increased slightly by 0.1% (2.7 thousand) from the previous month. It has decreased by 1.7% (80.2 thousand) when compared to three months before and by 3.5% (171.7 thousand) from the same month of 2019.

The employment rate – estimated at 60.0% – remained unchanged from the previous month and decreased

by 1.1 pp from three months before and by 2.3 pp from July 2019.

**Figure 2: Employed population and employment rate**  
(seasonally adjusted data)



**Note:** The July 2020 estimates are provisional.

## C. Unemployed population and unemployment rate

In June 2020, the unemployed population estimate was 370.3 thousand people, having increased by 27.9% (80.7 thousand) from May 2020, by 16.7% (53.1 thousand) from March 2020 (three months before) and by 8.6% (29.4 thousand) when comparing to June 2019.

The unemployment rate stood at 7.3%, having increased by 1.4 pp from the previous month, by 1.1 pp from March 2020 and by 0.7 pp from June 2019.

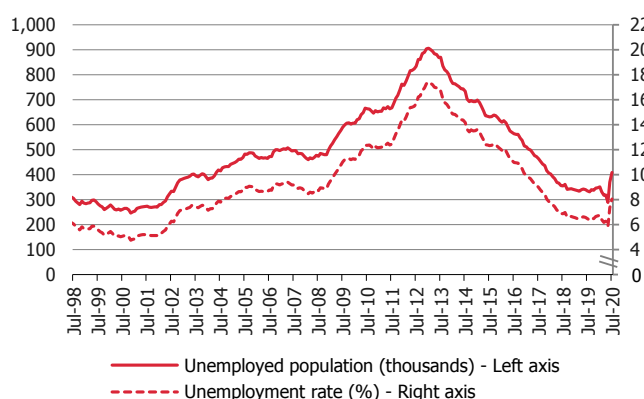
In July 2020, the unemployed population – estimated provisionally at 409.7 thousand people – has increased by 10.6% (39.4 thousand) from the previous month, by 28.5% (90.9 thousand) from three months before and by 22.0% (73.9 thousand) when compared to one year before.

In July 2020, the provisional estimate for the unemployment rate was 8.1% and it has increased by

0.8 pp from the previous month's level, by 1.8 pp from three months before and by 1.6 pp from July 2019.

The youth unemployment rate stood at 26.3%, which corresponds to a decrease by 1.1 pp from June 2020. The adults' unemployment rate estimate was 6.8% and has increased by 0.8 pp from the previous month.

**Figure 3: Unemployed population and unemployment rate (seasonally adjusted data)**



**Note:** The July 2020 estimates are provisional.

#### D. Inactive population and inactivity rate

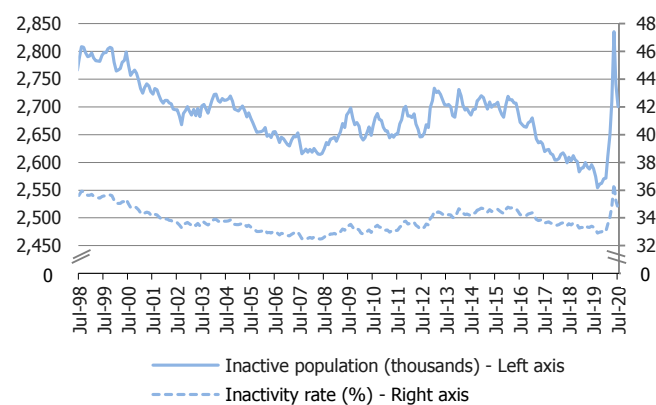
In June 2020, the inactive population – estimated at 2,741.8 thousand people – has decreased by 3.3% (93.7 thousand) from May 2020, having increased by 3.5% (92.0 thousand) from three months before and by 5.6% (146.1 thousand) from the same month of 2019.

In July 2020, the inactive population – estimated provisionally at 2,700.8 thousand people – has decreased by 1.5% (41.0 thousand) from the previous month and by 0.3% (8.9 thousand) from three months before and increased by 4.3% (111.5 thousand) when compared to one year before.

The inactivity rate, which stood at 34.7%, has decreased by 0.5 pp when compared to June 2020 and

has increased by 0.1 pp from April of the same year and by 1.4 pp from July 2019.

**Figure 4: Inactive population and inactivity rate (seasonally adjusted data)**



**Note:** The July 2020 estimates are provisional.

#### E. Supplementary indicators to unemployment and the labour underutilisation

The labour underutilisation is an indicator that aggregates the unemployed population, the underemployment of part-time workers, the inactive seeking work but not immediately available, and the inactive available but not seeking work<sup>4</sup>. This indicator is supplemented by its corresponding rate – the labour underutilisation rate<sup>5</sup> – and allow its data users a broader measure of the labour underutilisation than the more restrictive measure given by the official unemployment rate (ILO concept).

In June 2020, the labour underutilisation was estimated at 828.8 thousand people, having increased by 7.3% (56.7 thousand) from the month before, by 24.9% (165.2 thousand) from three months before and by

<sup>4</sup> For a more detail definition of these indicators, read the publication "Estatísticas do Emprego – 2.º trimestre de 2012" (only available in Portuguese) – chapter 4 (Concepts) and 6 (Theme under analysis) available at: <http://www.ine.pt/xurl/pub/143643471>

<sup>5</sup> See concepts in the Technical Note and Diagram in page 9.

18.6% (130.0 thousand) when compared to the same month of 2019.

The labour underutilisation rate was 15.5%, having increased by 0.9 pp from May 2020, by 3.1 pp from three months before and by 2.5 pp from June 2019.

In July 2020, the provisional estimate of labour underutilisation stood at 841.8 thousand people, having increased by 1.6% (13.0 thousand) when compared to the estimate of June 2020, by 17.9% (128.0 thousand) to the one from three months before and by 21.3% (148.0 thousand) to July 2019 estimate.

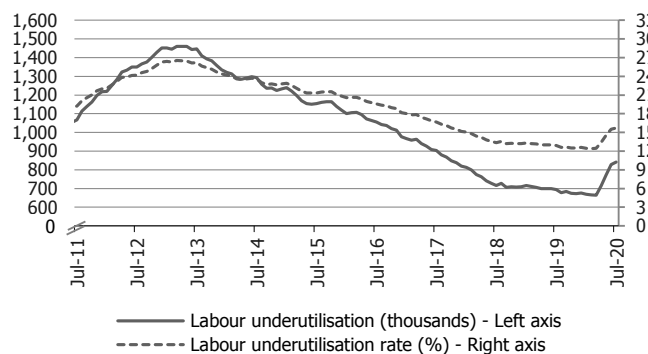
The provisional estimate of the labour underutilisation rate of July 2020 stood at 15.7% and it has increased by 0.2 pp from the month before, by 2.3 pp from April of the same year and by 2.8 pp from July 2019.

population (13.3 thousand) and the unemployed population (80.7 thousand).

Compared to three months before, the reduction of the active population (90.7 thousand) was due to the decrease of the employed population (143.8 thousand) having exceeded the unemployed population increase (53.1 thousand). The inactive population increased by 92.0 thousand people.

The same pattern was observed when comparing to June 2019; in which the active population decrease (134.2 thousand) was explained by the decrease in the employed population (163.6 thousand) having exceeded the unemployed population increase (29.4 thousand). The inactive population has increased by 146.1 thousand people.

**Figure 5: Labour underutilisation and labour underutilisation rate**  
(seasonally adjusted data)

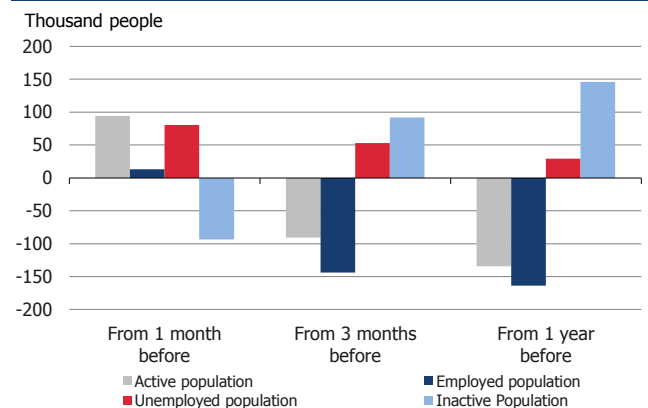


**Note:** The July 2020 estimates are provisional.

In summary (Figure 6), in June 2020, from the previous month, the active population has increased (94.0 thousand), while the inactive population has decreased (93.7 thousand).<sup>6</sup> The active population increase was due to the increase in both the employed

<sup>6</sup> The changes in the active population and in the inactive population are not necessarily symmetrical. They are also influenced by the total population change that results from the natural balance and the net migration.

**Figure 6: Change in the active, employed, unemployed and inactive population in June 2020**  
(seasonally adjusted data)

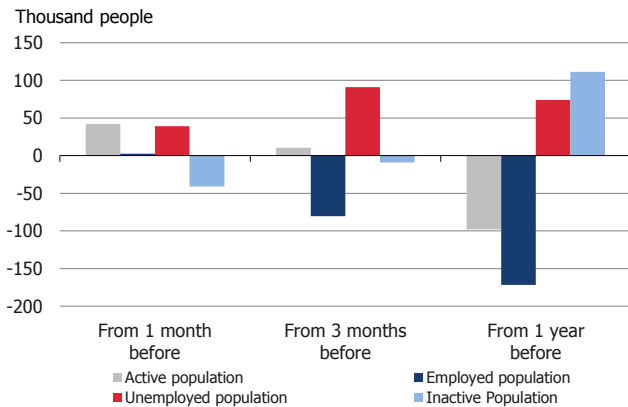


Regarding the provisional estimates of July 2020 (Figure 7), the active population monthly increase (42.1 thousand) was due to the slight increase in the employed population (2.7 thousand) and the increase of the unemployed population (39.4 thousand). In turn, the inactive population decreased by 41.0 thousand people, which was mainly explained by the decrease in the number of persons available to work but not seeking work (32.9 thousand).

When comparing to three months before, the increase of the active population (10.7 thousand) was due to the decrease observed in the employed population (80.2 thousand) having been compensated by the increase of the unemployed population (90.9 thousand). On the other hand, the inactive population has decreased by 8.9 thousand.

Comparing to July 2019; the active population has also decreased (97.8 thousand) due to the decrease observed in the employed population (171.3 thousand) being higher than the increase verified in the unemployed population (73.9 thousand). The inactive population has increased by 111.5 thousand people and the majority of this increase was, again, due to the increase in the number of persons available to work but not seeking work (77.3 thousand).

**Figure 7: Change in the active, employed, unemployed and inactive population in July 2020**  
(seasonally adjusted data)



**Note:** The July 2020 estimates are provisional.



### 3. The impact of the COVID-19 pandemic on the results of Labour Force Survey published in this Press Release

Since mid-March 2020, some measures have been taken to safeguard the public health due to COVID-19 pandemic, which have affected the normal functioning of the labour market and, therefore, the monthly employment and unemployment estimates.

In particular, the declaration of a state of emergency led to the temporary closure of several enterprises and restricted the free movement of persons, and it was accompanied by the closure of schools, which led many parents to stay at home (even if they could not work remotely from there) to take care of their children. At the same time, measures have been taken to protect workers' jobs, such as the new layoff regime with simpler rules.

In May and, mainly, since June, the restrictions to mobility were partially eased, but continued to affect the labour market functioning in the period under analysis. It should be noticed that the monthly estimates correspond to moving quarters, whose reference month is the central month of each of these quarters<sup>7</sup>. Thus, the definite estimates of June 2020 comprise the months of May, June and July, while the provisional estimates of July 2020 include the months of June, July and August.

As explained in section B of the Press Release "Employment Estimates – 2<sup>nd</sup> quarter 2020", released on 5 August 2020, one of the impacts of the COVID-19 pandemic on the results of the Labour Force Survey relates to the classification of people according to their Labour Status. During the pandemic, persons previously classified as unemployed and those who actually lost their jobs may now be classified as inactive, if they have not actively search for a job<sup>8</sup> due to restrictions on mobility, reduction or even interruption of the normal channels of information on job vacancies as a result of the partial or even total closure of a very significant proportion of enterprises. Also, the non-availability to start working in the reference week or in the two following weeks, if they had found a job, because they had to take care of children or other dependents or because they fell ill due to the pandemic, leads those persons to be now part of the inactive population.

Likewise, persons previously classified as employed may now fail to meet the criteria of the International Labour Organization (ILO), whose operationalisation is harmonised within the European Union together with Eurostat, and those criteria are required to be part of the employed population (for more details, see the concept of employed in the Technical Note). Therefore, those persons may now be considered as not employed (this is, as unemployed or as inactive). This is the case of persons who are absent from work due to a reduction in the economic activity or to layoff for an estimated duration of more than 3 months, while earning a salary of less than 50% of the usual one. Nonetheless, the measures taken to safeguard the public health due to COVID-19 pandemic covered a large number of people potentially in this situation, which kept them in the employed population<sup>9</sup>.

<sup>7</sup> For more information, please see the Technical Note.

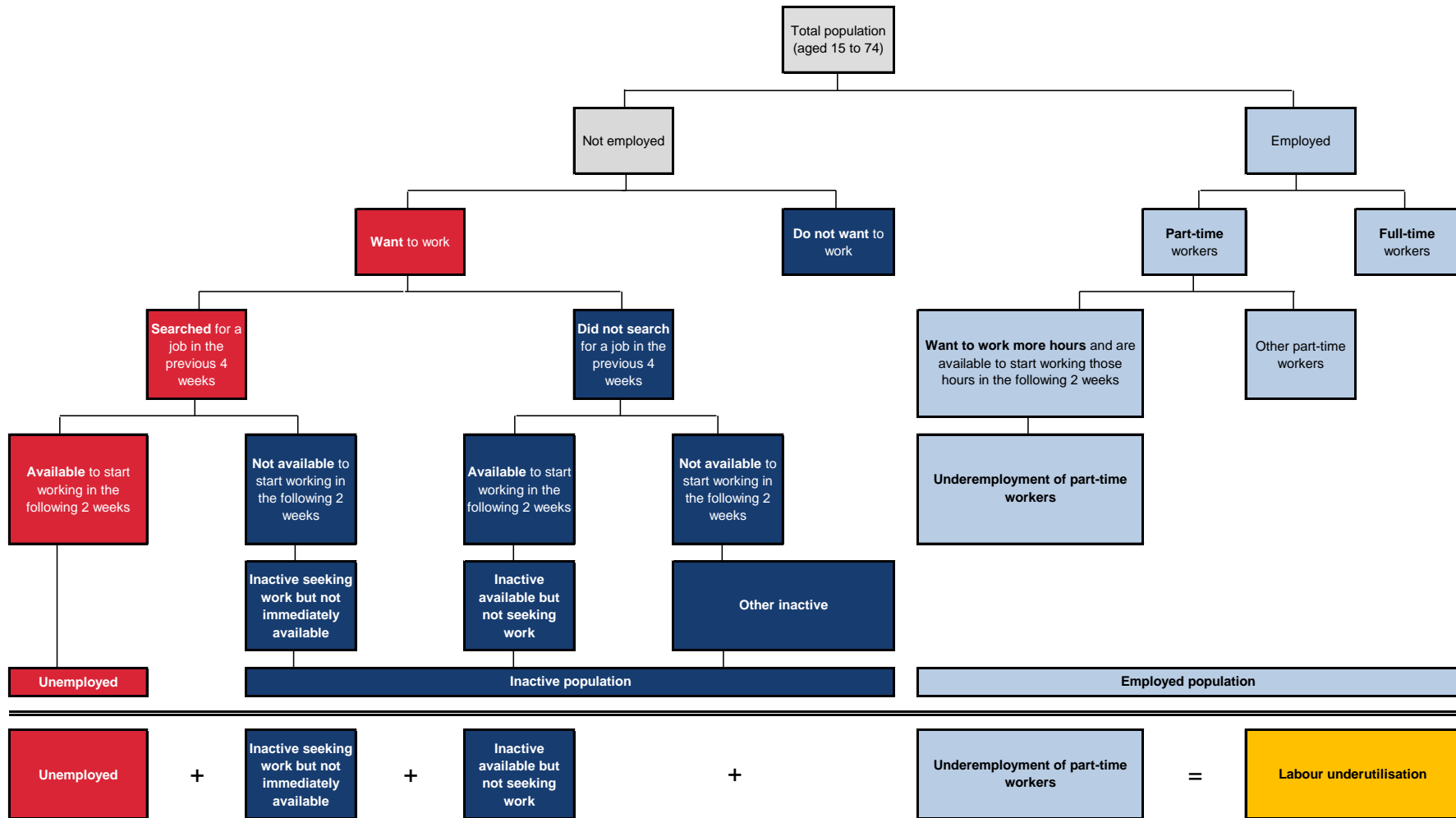
<sup>8</sup> Essential criterion for their classification as unemployed; for more details, see the concept of unemployed in the Technical Note

<sup>9</sup> For a detailed analysis, see section B. The impact of the COVID-19 pandemic on the results of the Labour Force Survey in the Press Release "Employment Statistics – 2<sup>nd</sup> quarter 2020", available at [Statistics Portugal website](https://www.ine.pt).

The end of the emergency state (in May), the transition to calamity state ended in June and the introduction of the state of alert since the beginning of July have enabled the reopening of various economic activities, while the self-isolation duty became not as restrictive as before. This may have made possible the beginning of the fulfilment of the criteria of active job search and willingness to start working, essential for the classification of non-employed people in the active population as unemployed. The possibility of compliance with both criteria is already visible in the definitive results of June and reinforced in the provisional estimates of July, where a strong increase of the unemployed population in comparison to the three periods (previous month, three months before and the same month of the previous year) is observed and a monthly decrease of the inactive population that fulfils only one of the criteria needed to be classified as unemployed is verified, resulting in the increase of the unemployment rate to 8.1% in July (provisional estimate). In fact, there is a monthly increase, in July 2020, of 13.0 thousand people in labour underutilisation, which was totally explained by the increase in unemployment (39.4 thousand) and in underemployment of part-time workers (12.4 thousand), given that the number of persons seeking work but not available and of persons available to work but not seeking have both decreased (by 6.0 thousand and 32.9 thousand, respectively).



**Criteria used when classifying the population aged 15 to 74 by labour status**



**Table 1: Active population and active rate by sex and age group (15 to 74)**

	Seasonally adjusted data					Not seasonally adjusted data				
	Jul 2019	Apr 2020	May 2020	Jun 2020	Jul 2020 (p)	Jul 2019	Apr 2020	May 2020	Jun 2020	Jul 2020 (p)
	Thousands									
<b>Active population (15 to 74)</b>	<b>5,178.8</b>	<b>5,070.3</b>	<b>4,944.9</b>	<b>5,038.9</b>	<b>5,081.0</b>	<b>5,195.5</b>	<b>5,069.4</b>	<b>4,949.9</b>	<b>5,053.6</b>	<b>5,094.7</b>
Men (15 to 74)	2,611.7	2,567.3	2,499.2	2,534.6	2,551.2	2,624.1	2,564.8	2,501.1	2,543.9	2,561.3
Women (15 to 74)	2,567.0	2,503.0	2,445.7	2,504.3	2,529.8	2,571.4	2,504.7	2,448.7	2,509.7	2,533.4
Youth (aged 15 to 24)	375.0	341.8	309.9	319.9	322.9	378.6	333.3	300.4	314.6	325.4
Adults (aged 25 to 74)	4,803.7	4,728.5	4,635.0	4,719.0	4,758.1	4,816.9	4,736.1	4,649.4	4,739.0	4,769.3
	%									
<b>Active rate (15 to 74)</b>	<b>66.7</b>	<b>65.2</b>	<b>63.6</b>	<b>64.8</b>	<b>65.3</b>	<b>66.9</b>	<b>65.2</b>	<b>63.6</b>	<b>65.0</b>	<b>65.5</b>
Men (15 to 74)	70.4	69.2	67.4	68.3	68.8	70.8	69.1	67.4	68.6	69.0
Women (15 to 74)	63.2	61.5	60.1	61.5	62.1	63.3	61.5	60.1	61.6	62.2
Youth (aged 15 to 24)	34.4	31.2	28.3	29.2	29.5	34.7	30.4	27.4	28.7	29.7
Adults (aged 25 to 74)	71.9	70.7	69.3	70.6	71.2	72.1	70.8	69.6	70.9	71.3

Source: Statistics Portugal, Labour Force Survey.

Note: (p) - Provisional estimates.

**Table 2: Employed population and employment rate by sex and age group (15 to 74)**

	Seasonally adjusted data					Not seasonally adjusted data				
	Jul 2019	Apr 2020	May 2020	Jun 2020	Jul 2020 (p)	Jul 2019	Apr 2020	May 2020	Jun 2020	Jul 2020 (p)
	Thousands									
<b>Employed population (15 to 74)</b>	<b>4,843.0</b>	<b>4,751.5</b>	<b>4,655.3</b>	<b>4,668.6</b>	<b>4,671.3</b>	<b>4,879.5</b>	<b>4,750.9</b>	<b>4,671.4</b>	<b>4,704.2</b>	<b>4,706.0</b>
Men (15 to 74)	2,461.8	2,433.7	2,355.5	2,354.6	2,349.8	2,482.8	2,428.7	2,360.3	2,371.2	2,368.5
Women (15 to 74)	2,381.2	2,317.7	2,299.8	2,314.0	2,321.5	2,396.7	2,322.2	2,311.2	2,333.1	2,337.4
Youth (aged 15 to 24)	301.6	271.6	243.7	232.1	238.0	309.9	268.1	240.6	235.1	244.8
Adults (aged 25 to 74)	4,541.4	4,479.9	4,411.6	4,436.4	4,433.3	4,569.7	4,482.8	4,430.8	4,469.2	4,461.2
	%									
<b>Employment rate (15 to 74)</b>	<b>62.3</b>	<b>61.1</b>	<b>59.8</b>	<b>60.0</b>	<b>60.0</b>	<b>62.8</b>	<b>61.1</b>	<b>60.0</b>	<b>60.5</b>	<b>60.5</b>
Men (15 to 74)	66.4	65.6	63.5	63.5	63.3	66.9	65.5	63.6	63.9	63.9
Women (15 to 74)	58.7	56.9	56.5	56.8	57.0	59.0	57.0	56.8	57.3	57.4
Youth (aged 15 to 24)	27.7	24.8	22.2	21.2	21.7	28.4	24.5	22.0	21.4	22.3
Adults (aged 25 to 74)	68.0	67.0	66.0	66.4	66.3	68.4	67.1	66.3	66.9	66.7

Source: Statistics Portugal, Labour Force Survey.

Note: (p) - Provisional estimates.

**Table 3: Unemployed population and unemployment rate by sex and age group (15 to 74)**

	Seasonally adjusted data					Not seasonally adjusted data				
	Jul 2019	Apr 2020	May 2020	Jun 2020	Jul 2020 (p)	Jul 2019	Apr 2020	May 2020	Jun 2020	Jul 2020 (p)
	Thousands									
<b>Unemployed population (15 to 74)</b>	<b>335.8</b>	<b>318.8</b>	<b>289.6</b>	<b>370.3</b>	<b>409.7</b>	<b>316.0</b>	<b>318.6</b>	<b>278.4</b>	<b>349.4</b>	<b>388.8</b>
Men (15 to 74)	150.0	133.6	143.7	180.0	201.4	141.3	136.1	140.9	172.8	192.8
Women (15 to 74)	185.8	185.2	145.9	190.3	208.3	174.7	182.5	137.6	176.6	196.0
Youth (aged 15 to 24)	73.4	70.3	66.2	87.7	84.9	68.8	65.3	59.8	79.5	80.7
Adults (aged 25 to 74)	262.4	248.6	223.4	282.5	324.8	247.2	253.3	218.6	269.9	308.1
	%									
<b>Unemployment rate (15 to 74)</b>	<b>6.5</b>	<b>6.3</b>	<b>5.9</b>	<b>7.3</b>	<b>8.1</b>	<b>6.1</b>	<b>6.3</b>	<b>5.6</b>	<b>6.9</b>	<b>7.6</b>
Men (15 to 74)	5.7	5.2	5.7	7.1	7.9	5.4	5.3	5.6	6.8	7.5
Women (15 to 74)	7.2	7.4	6.0	7.6	8.2	6.8	7.3	5.6	7.0	7.7
Youth (aged 15 to 24)	19.6	20.6	21.4	27.4	26.3	18.2	19.6	19.9	25.3	24.8
Adults (aged 25 to 74)	5.5	5.3	4.8	6.0	6.8	5.1	5.3	4.7	5.7	6.5

Source: Statistics Portugal, Labour Force Survey.

Note: (p) - Provisional estimates.

**Table 4: Inactive population and inactivity rate by sex and age group (15 to 74)**

	Seasonally adjusted data					Not seasonally adjusted data				
	Jul 2019	Apr 2020	May 2020	Jun 2020	Jul 2020 (p)	Jul 2019	Apr 2020	May 2020	Jun 2020	Jul 2020 (p)
	Thousands									
<b>Inactive population (15 to 74)</b>	<b>2,589.3</b>	<b>2,709.7</b>	<b>2,835.5</b>	<b>2,741.8</b>	<b>2,700.8</b>	<b>2,572.5</b>	<b>2,710.6</b>	<b>2,830.5</b>	<b>2,727.0</b>	<b>2,687.0</b>
Men (15 to 74)	1,097.1	1,141.8	1,209.8	1,174.5	1,158.2	1,084.7	1,144.4	1,207.9	1,165.1	1,148.1
Women (15 to 74)	1,492.2	1,568.0	1,625.6	1,567.3	1,542.6	1,487.9	1,566.2	1,622.6	1,561.9	1,538.9
Youth (aged 15 to 24)	714.8	753.5	785.8	776.1	773.6	711.2	762.0	795.3	781.4	771.1
Adults (aged 25 to 74)	1,874.4	1,956.2	2,049.7	1,965.7	1,927.1	1,861.3	1,948.6	2,035.3	1,945.6	1,915.9
	%									
<b>Inactivity rate (15 to 74)</b>	<b>33.3</b>	<b>34.8</b>	<b>36.4</b>	<b>35.2</b>	<b>34.7</b>	<b>33.1</b>	<b>34.8</b>	<b>36.4</b>	<b>35.0</b>	<b>34.5</b>
Men (15 to 74)	29.6	30.8	32.6	31.7	31.2	29.2	30.9	32.6	31.4	31.0
Women (15 to 74)	36.8	38.5	39.9	38.5	37.9	36.7	38.5	39.9	38.4	37.8
Youth (aged 15 to 24)	65.6	68.8	71.7	70.8	70.5	65.3	69.6	72.6	71.3	70.3
Adults (aged 25 to 74)	28.1	29.3	30.7	29.4	28.8	27.9	29.2	30.4	29.1	28.7

Source: Statistics Portugal, Labour Force Survey.

Notes: (p) - Provisional estimates.

**Table 5: Labour underutilisation and labour underutilisation rate (15 to 74)**

	Seasonally adjusted data					Not seasonally adjusted data				
	Jul 2019	Apr 2020	May 2020	Jun 2020	Jul 2020 (p)	Jul 2019	Apr 2020	May 2020	Jun 2020	Jul 2020 (p)
	Thousands									
<b>Labour underutilisation (15 to 74)</b>	<b>693.8</b>	<b>713.8</b>	<b>772.1</b>	<b>828.8</b>	<b>841.8</b>	<b>673.2</b>	<b>712.3</b>	<b>748.7</b>	<b>795.2</b>	<b>816.9</b>
Unemployed population	335.8	318.8	289.6	370.3	409.7	316.0	318.6	278.4	349.4	388.8
Underemployed part-time workers	157.7	136.9	133.0	150.9	163.3	145.8	144.2	132.7	145.4	151.7
Persons seeking work but not immediately available	24.5	23.0	23.3	21.6	15.6	27.1	23.5	25.4	23.8	17.3
Persons available to work but not seeking	175.9	235.1	326.3	286.1	253.2	184.4	226.0	312.1	276.7	259.1
	%									
<b>Labour underutilisation rate (15 to 74)</b>	<b>12.9</b>	<b>13.4</b>	<b>14.6</b>	<b>15.5</b>	<b>15.7</b>	<b>12.5</b>	<b>13.4</b>	<b>14.2</b>	<b>14.9</b>	<b>15.2</b>

**Source:** Statistics Portugal, Labour Force Survey.

**Notes:** (p) - Provisional estimates.

## TECHNICAL NOTE

### Labour Force Survey

The main purpose of the Labour Force Survey is to characterise the population in terms of the labour market. It is a quarterly sample survey, addressed to families occupying the same dwelling in the national territory, which makes available quarterly and annual data.

Most of the characteristics observed in this survey report to the situation in one pre-defined week (from Monday to Sunday), known as reference week. The reference weeks are uniformly distributed throughout the quarters and years. The interviews usually take place in the week following the reference week.

The information is obtained directly, through computer-assisted interview, by using a mixed data collection mode: the initial interview is done face-to-face by an interviewer visiting the household and the other five interviews are done by telephone, if certain requirements are met.

Published data were calibrated by using the population estimates calculated from the final results of Census 2011.

### Monthly Employment and Unemployment Estimates

In 2014, Statistics Portugal initiated a monthly release of Labour Force Survey estimates for the main labour market indicators in addition to the usual quarterly estimates releases.

With this initiative, Statistics Portugal intends to provide to users monthly updated information on labour market recent developments, allowing, at the same time, a more complete reading picture than that provided so far by Eurostat in its monthly releases of the unemployed population and unemployment rate estimates for Portugal. With this dissemination, Statistics Portugal satisfies also a specific requirement from the PEEIs (Principal European Economic Indicators).

Taking advantage of the continuous nature of the Labour Force Survey collection process, it is possible to monthly obtain estimates related to successive sets of three months (moving quarters), assuring consistency with the quarterly released estimates.

The monthly estimates refer to *centred* moving quarters, where the reference month ( $m$ ) corresponds to the central month of each moving quarter. In fact, the reference month of each Press Release corresponds to the central month of the quarter composed by  $m-1$ ,  $m$  and  $m+1$  months. As a consequence, the monthly changes are calculated on values that contain common months. Therefore, the comparison of moving quarters without common months should be done in relation to reference months three months earlier.

The option for disseminating centred moving quarters series aimed at avoiding delays in the detection of turning points in the economic cycle that arise from the use of simple moving averages, but it implies that the estimates for the latest released moving quarter are provisional (see "Revisions" section below).

As estimates of centred moving quarters, the values (not seasonally adjusted) of the reference months February, May, August and November of each year correspond to the estimates of the 1<sup>st</sup>, 2<sup>nd</sup>, 3<sup>rd</sup> and 4<sup>th</sup> natural quarters, respectively, whose results are published and analysed with greater detail in the quarterly releases of the Labour Force Survey estimates.

The estimates for the last reference month are always provisional, as they correspond to a moving quarter where for the third month the data collection is not completed yet. In fact, for the first two months ( $m-1$  and  $m$ ) the data collection from the Labour Force Survey is already completed, while for the third month ( $m+1$ ) only partially collected data are available.

In this context, in each monthly Press Release the provisional estimates for the reference month and the definitive estimates for the previous months are published.

*(to be continued)*

(continuation)

### Information available

The data series selected for monthly releases refer to both employed and unemployed population, by sex and age group, and to the corresponding rates. In relation to these data series, it should be noted the following:

- For the purpose of creating long monthly data series needed for subsequent adjustment of seasonality, the two latest data series of the Labour Force Survey (from 1998 to 2010; from 2011 onwards) were previously linked.
- Unless otherwise stated, the data series analysed in this Press Release are seasonally adjusted. For this reason, the analysis focuses on the comparison with the most recent periods. As agreed, Eurostat started using these estimates in its unemployment monthly releases. The original data series (not seasonally adjusted; as in the Statistics Portugal quarterly releases), are available in Tables 1 and 2 of the annex and at the Statistics Portugal Portal ([www.ine.pt](http://www.ine.pt)).
- The indicators analysed in this Press Release were calculated for the age subgroup of those aged 15 to 74 (as in the Eurostat News Release), which differs from the criterion adopted at the Statistics Portugal quarterly releases (people aged 15 and over, in line with the concepts in force of the International Labour Organization).

The back series for all the released and analysed indicators in this Press Release, since February 1998 (quarter from January to March 1998), are available at the Statistics Portugal Portal.

Due to rounding, totals may not correspond exactly to the sum of the parts.

### Revisions

The monthly released data are subject to revisions, as previously mentioned. The revisions come from obtaining the definitive estimates for the previous month (moving quarter) due to the conclusion of its last month collection process. In addition, the revisions also come from the updating of the seasonally adjusted data series whenever a new observation is added. Therefore, in each Press Release the not seasonally adjusted definitive estimates for the previous reference month are published.

The impact of those revisions, measured by the difference between the estimates now released for June 2020 (definitive estimates) and the ones for that month published in the last Press Release, is the following:

Revision of June 2020 estimates - main indicators			
	Unit	Seasonally adjusted data	Not seasonally adjusted data
Active population (15 to 74)		30.1	28.9
Employed population (15 to 74)		10.7	10.7
Unemployed population (15 to 74)	Thousands	19.4	18.2
Inactive population (15 to 74)		- 30.0	- 29.0
Labour underutilisation (15 to 74)		8.8	8.0
Employment rate (15 to 74)		0.1	0.2
Unemployment rate (15 to 74)		0.3	0.3
Men's unemployment rate (15 to 74)		0.3	0.3
Women's unemployment rate (15 to 74)	p.p.	0.4	0.3
Youth unemployment rate (15 to 24)		1.8	1.8
Adults' unemployment rate (25 to 74)		0.3	0.2
Labour underutilisation rate (15 to 74)		0.1	0.1

In June 2020, the upwards revision (+0.3 pp) of the seasonally adjusted unemployment rate was followed by an also upwards revision for young people (+1.8 pp), women (+0.4 pp), men and adults (+0.3 pp for both). The upwards revision of the unemployment rate was followed by an upwards revision of the unemployed population (+5.5%; +19.4 thousand) and of the employed population (+0.2%, +10.7 thousand).

(to be continued)



*(continuation)*

### Some concepts

**Unemployed:** person aged 15 and 74 who, during the reference period, was simultaneously in the following situations:

- without work, i.e. was not in paid employment or self-employment;
- seeking work, i.e. had taken specific steps in a specified recent period (reference period or the three previous weeks) to seek paid employment or self-employment; and
- currently available for work, i.e. was available for paid employment or self-employment during the reference period.

**Employed:** person aged 15 and over who, during the reference period, was in one of the following situations:

- did any work for pay or profit for at least one hour, including a familiar gain in money or gender;
- was not working but had jobs from which was temporarily absent<sup>(a)</sup>;
- had a business, but was temporarily not working for a specific reason;
- was in a pre-retirement situation while working.

<sup>(a)</sup> According to the internationally defined criteria, there is a group of persons who, although absent from work in the reference week, should be classified as employed. This is the case of persons on vacation, taking holidays, maternity/paternity leave or absent due to illness. For other predefined absences, it is necessary to check the duration of such absence: if the absence lasts up to 3 months, the person shall be deemed to have a formal link to employment; if it lasts more than 3 months, the person will only be classified as employed if he continues to receive an income equal to or greater than 50%. Otherwise, these persons are considered as not employed.

**Labour force (active population):** all persons aged 15 or over who, during the reference period, made up the available labour force for the production of economic goods and services (employed and unemployed).

**Extended labour force:** labour force enlarged by the inactive seeking work but not immediately available and the inactive available but not seeking work.~

**Labour underutilisation:** indicator that aggregates the unemployed population, the underemployment of part-time workers, the inactive seeking work but not immediately available, and the inactive available but not seeking work.

**Unemployment rate:** ratio between the unemployed population and the labour force.

$$U.R. (\%) = (\text{Unemployed population} / \text{Labour force}) \times 100$$

**Employment rate (15 and over):** ratio between the employed population and the working age total population (15 and over).

$$E.R. (\%) = (\text{Employed population} / \text{Total population 15 and over}) \times 100$$

**Participation rate (15 and over):** ratio between the labour force and the working age total population (15 and over).

$$P.R. (\%) = (\text{Labour force} / \text{Total population 15 and over}) \times 100$$

**Inactivity rate (15 and over):** ratio between the working age inactive population (15 and over) and the working age total population (15 and over).

$$I.R. (\%) = (\text{Inactive population 15 and over} / \text{Total population 15 and over}) \times 100$$

*(to be continued)*

*(continuation)*

**Labour underutilisation rate:** ratio that defines the relationship among the labour underutilisation and the extended labour force.

$L.U.R. (\%) = (\text{Labour underutilisation} / \text{Extended labour force}) \times 100$

For the indicators selected for monthly dissemination, it was considered the age subgroup of those aged 15 to 74.

For a more detailed definition of the concepts and methodological features of this statistical operation, consult the [Labour Force Survey](#) or the [Monthly Employment and Unemployment Estimates](#) methodological documents (both only in Portuguese) available at the Statistics Portugal website.

**Next Press Release:**

30 September 2020: "Monthly Employment and Unemployment Statistics – August 2020".

1 October 2020: Eurostat News Release.