

Vital Statistics – preliminary data

2019

Natural balance remains negative

In 2019 were registered 87,000 live births and 112,253 deaths in national territory. The number of live births of mothers residing in Portugal was 86,557, 0.5% less than 2018. The number of deaths of residents in Portugal was 111,757, 1.1% less than 2018. The natural balance remained negative (-25,200), although lower when compared to the previous year as a result of the greater reduction in the number of deaths than in the number of live births.

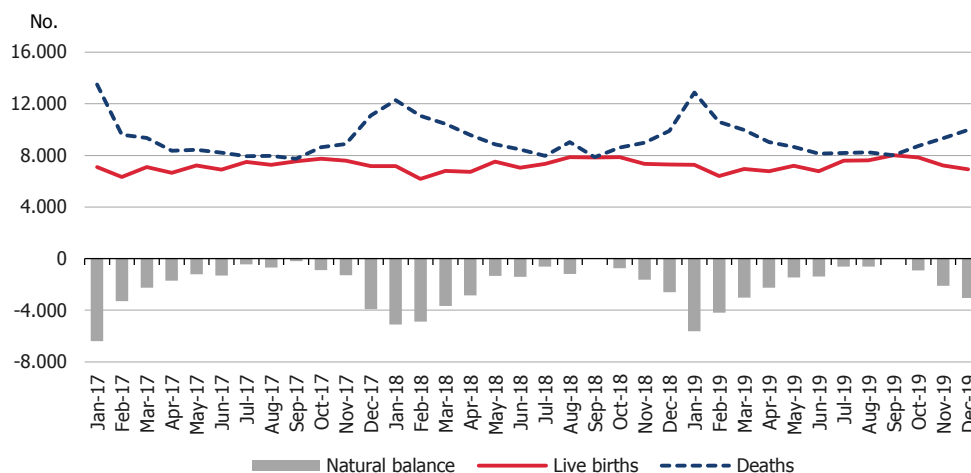
Live births by place of residence of the mother, deaths by place of residence and natural balance (No.)

	Live births			Deaths			Natural balance (Portugal)
	Total	Portugal	Abroad	Total	Portugal	Abroad	
2019⁽¹⁾	87.000	86.557	443	112.253	111.757	496	-25.200
January	7.298	7.266	32	12.921	12.883	38	-5.617
February	6.437	6.404	33	10.626	10.599	27	-4.195
March	6.971	6.941	30	9.990	9.967	23	-3.026
April	6.820	6.782	38	9.082	9.025	57	-2.243
May	7.238	7.194	44	8.706	8.659	47	-1.465
June	6.809	6.768	41	8.175	8.140	35	-1.372
July	7.647	7.597	50	8.238	8.201	37	-604
August	7.664	7.623	41	8.296	8.244	52	-621
September	8.054	8.005	49	8.057	8.008	49	-3
October	7.864	7.831	33	8.787	8.735	52	-904
November	7.255	7.229	26	9.377	9.331	46	-2.102
December	6.943	6.917	26	9.998	9.965	33	-3.048
2018⁽²⁾	87.381	87.020	361	113.573	113.051	522	-26.031

(1) Preliminary values based on the information registered in the Civil Register Offices until the end of January 2020.

(2) The natural balance value for 2018 integrates updated live births and deaths data, differing from the value previously released.

Live births, deaths and natural balance (No.) - Portugal



Technical Note

Statistics Portugal releases the preliminary annual values of live births and deaths for 2019, based on the information registered in the Civil Register Offices until the end of January 2020.

Jointly with the regular release on the Statistics Portugal Website of the monthly preliminary values - January to November – of live births and deaths by sex and NUTS 1, 2 and 3 geographical breakdown, the preliminary number of live births and deaths for December (total values, Portugal and abroad) are also made available. The provisional monthly values from January to December 2019, by sex and geographical breakdown up to NUTS 3, will be available in March 2020. In April the final figures will be released by sex and NUTS 1, 2, 3 and Municipalities.

Data on live births and deaths are obtained from statistical operations of direct and exhaustive collection on live births and deaths in Portuguese territory using facts that are subject to compulsory civil registration (birth and death) in the Sistema Integrado do Registo e Identificação Civil (SIRIC).

In addition to administrative information obtained from Civil Register Offices, Statistics Portugal collects still an additional set of variables identified as statistically pertinent to the National Statistic System (NSS) and the European Statistical System (EES).

Data are recorded and sent electronically, in compliance with the requirements set out by Statistics Portugal and laid down in liaison with the Instituto de Registos e Notariado (IRN) and the Instituto de Gestão Financeira e Equipamentos da Justiça (IGFEJ).

Definitions:

Live birth: This is the complete expulsion or extraction from the mother's body, irrespective of the duration of the pregnancy, of a product of fertilization that, after separation, breathes or shows any other signs of life, such as a beating of the heart or umbilical cord or actual contraction of any muscle subject to voluntary movement, whether or not the umbilical cord has been severed and whether or not the placenta is retained.

Death: The permanent disappearance of vital functions.

Natural balance: The difference between the number of live births and the number of deaths during a given period, usually a calendar year.

Detailed methodological information available at: www.ine.pt, option Products, Metadata system.

Detailed statistical information available at: www.ine.pt, option Products, Statistical data, database, theme Population.