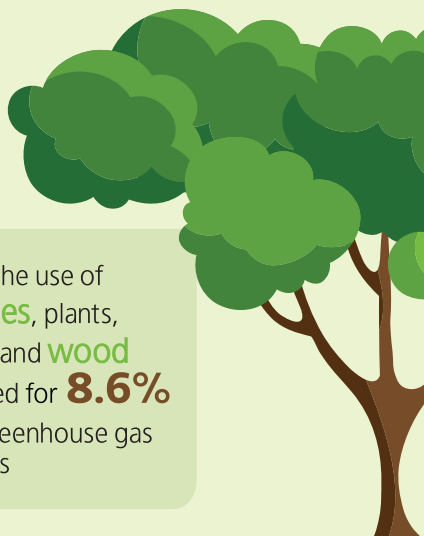




# International Day of Forests

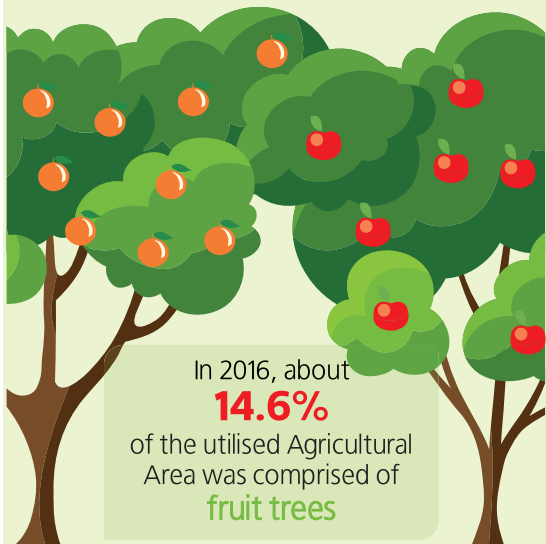
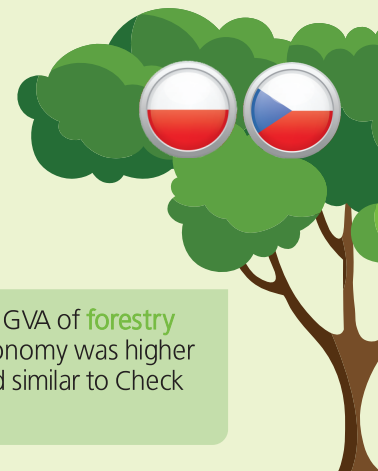
In 2016, the use of soils, **trees**, plants, biomass and **wood** accounted for **8.6%** of the greenhouse gas emissions



In 2015, the contribution of **forestry and logging** to the national GVA was **0.6%**

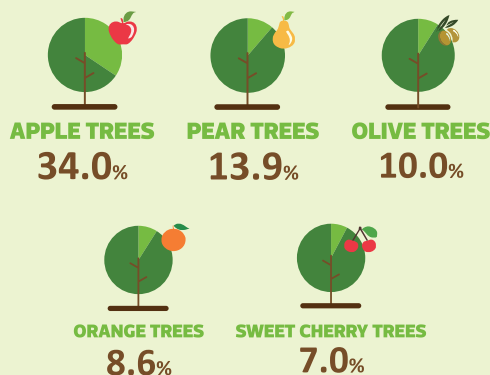


In 2015, the weight of GVA of **forestry and logging** in the economy was higher than in Spain, Italy and similar to Check Republic and Poland.



In 2016, about **14.6%** of the utilised Agricultural Area was comprised of **fruit trees**

**Main fruit trees**  
sold by tree nurseries in mainland Portugal during the 2016/2017 campaign



Traditionally, there is a surplus in trade balance in **forest products**.

In 2018, it stood at **€ 2.564.8 million**

