

8 January 2018

Monthly Employment and Unemployment Estimates

November 2017

October unemployment rate at 8.4%

The October 2017 unemployment rate was 8.4%, down by 0.1 percentage points (p.p.) from the previous month's level and by 0.5 p.p. from three months before. That value corresponds to a downwards revision of 0.1 p.p. from the provisional estimate released one month ago. Only going back to February 2005 it is possible to find a rate as lower as that.

Statistics Portugal estimates that the October unemployed population was 435.0 thousand people, having decreased by 1.1% from the previous month's level (4.6 thousand fewer people). The employed population estimate was 4,730.7 thousand people, having increased by 0.3% (12.1 thousand more people) from the previous month's level.

The provisional unemployment rate estimate for November 2017 was 8.2%. For this month, the provisional estimate for the unemployed population was 424.2 thousand people and that for the employed population was 4,745.1 thousand people.

Monthly Employment and Unemployment Estimates							
Main indicators							
	Unit	Seasonally adjusted data					
		Nov 2016	July 2017	Aug 2017	Sep 2017	Oct 2017	Nov 2017 (p)
Employed population (15 to 74)	Thousands	4,586.0	4,704.6	4,711.8	4,718.6	4,730.7	4,745.1
Unemployed population (15 to 74)	Thousands	538.2	458.7	451.5	439.6	435.0	424.2
Employment rate (15 to 74)		58.8	60.4	60.5	60.6	60.8	61.0
Unemployment rate (15 to 74)	%	10.5	8.9	8.7	8.5	8.4	8.2
Youth unemployment rate (15 to 24)	%	27.0	23.0	24.6	24.5	24.6	23.7
Adults' unemployment rate (25 to 74)	%	9.2	7.8	7.5	7.3	7.1	7.0

Source: Statistics Portugal, Labour Force Survey.

Note: (p) - Provisional estimates.

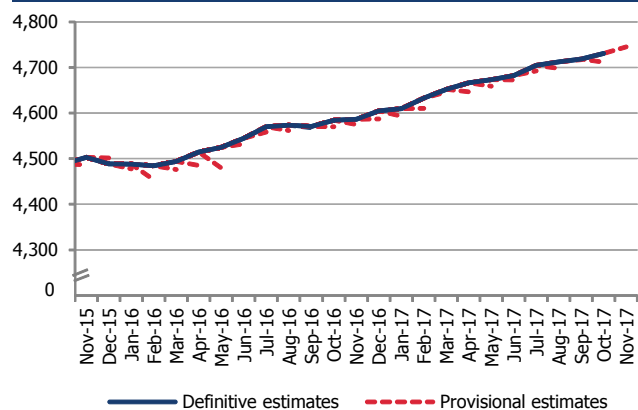
1. Employed population and employment rate ⁽¹⁾

In October 2017, the employed population estimate was 4,730.7 thousand people, having increased by 0.3% (12.1 thousand) from the previous month (September 2017) and by 0.6% (26.1 thousand) from three months before (July 2017). That value was revised upwards, from the provisional one released a month ago, by 0.4% (19.5 thousand).

⁽¹⁾ In the estimates published on this Press Release, obtained as described in the technical note (annex), it was considered the population aged 15 to 74 and the values were seasonally adjusted (unless otherwise stated).

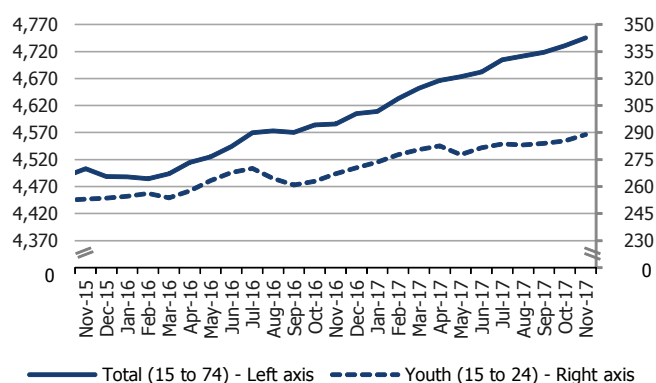
In November 2017, the provisional estimate for the employed population was 4,745.1 thousand people, having increased by 0.3% (14.4 thousand) from the previous month (October 2017) and increased by 0.7% (33.3 thousand) from three months before (August 2017).

Figure 1: Employed population - definitive and provisional estimates
(seasonally adjusted data; thousands)



Still in November 2017, and comparing to the previous month, the employed population increased for all groups under analysis: women (0.6%; 12.9 thousand); adults (25 to 74 years old) (0.2%; 10.8 thousand); young people (15 to 24 years old) (1.2%; 3.5 thousand); and men (0.1%; 1.5 thousand).

Figure 2: Total and youth employed population
(seasonally adjusted data; thousands)



The employment rate was 61.0%, having increased by 0.2 percentage points (p.p.) from the previous month's level and by 0.5 p.p. from three months before.

The employment rate of men (65.2%) exceeded that of women (57.1%) by 8.1 p.p.. Compared to the previous month's value, the former increased by 0.1 p.p. and the latter by 0.3 p.p..

The employment rate of adults was 66.6% and increased by 0.2 p.p. when comparing to October 2017, while that of young people was 26.5% and increased by 0.3 p.p. if compared to that month's value.

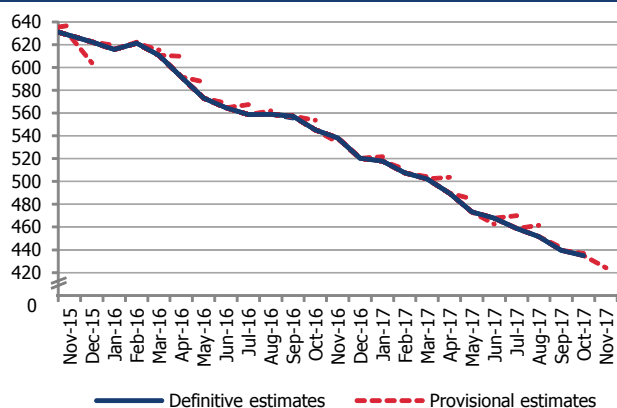
2. Unemployed population and unemployment rate

In October 2017, the unemployed population estimate was 435.0 thousand people, having decreased by 1.1% (4.6 thousand) from September 2017 and by 5.2% (23.7 thousand) from July 2017. That value was revised downwards by 0.4% (1.9 thousand).

In November 2017, the provisional estimate for the unemployed population was 424.2 thousand people, having decreased by 2.5% (10.8 thousand) from the previous month (October 2017) and by 6.1% (27.3 thousand) from the value observed three months before (August 2017).

Also in November 2017, and comparing to the previous month, the unemployed population decreased for women (4.4%; 10.1 thousand), adults (2.2%; 7.5 thousand) and young people (3.5%; 3.2 thousand). On the other hand, the unemployed population of men remained practically unchanged.

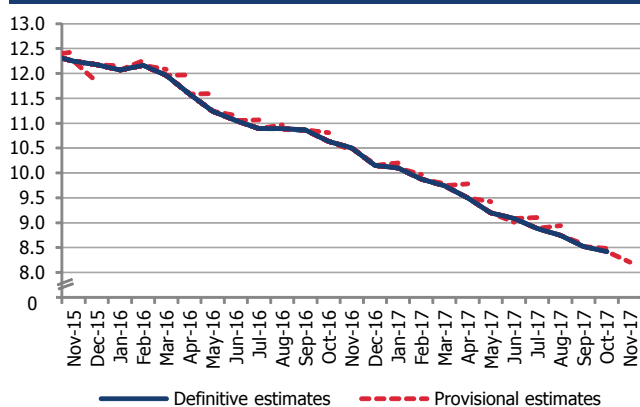
Figure 3: Unemployed population - definitive and provisional estimates
(seasonally adjusted data; thousands)



In October 2017, the unemployment rate was 8.4% and only going back to February 2005 it is possible to find a rate as lower as this. That rate decreased by 0.1 p.p. from the previous month and by 0.5 p.p. from three months before, which corresponds to a downwards revision of 0.1 p.p. from the provisional estimate released one month ago.

In November 2017, the provisional estimate for the unemployment rate was 8.2%, having decreased by 0.2 p.p. from the previous month's level and by 0.5 p.p. from August 2017.

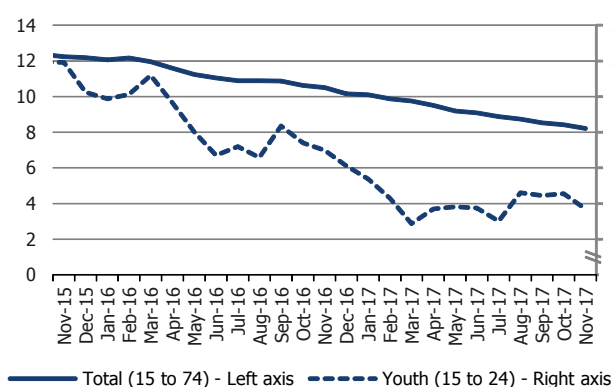
Figure 4: Unemployment rate - definitive and provisional estimates
(seasonally adjusted data; %)



The unemployment rate of women (8.6%) was higher than that of men (7.8%) by 0.8 p.p.. Both rates decreased from the previous month's respective levels, the former by 0.4 p.p. and the latter by 0.1 p.p..

The youth unemployment rate stood at 23.7% and decreased by 0.9 p.p. from the month before, while the adults' unemployment rate was 7.0% and decreased by 0.1 p.p. from that month.

Figure 5: Total and youth unemployment rate
(seasonally adjusted data; %)



In October 2017, the not seasonally adjusted unemployment rate was 8.5%, having remained unchanged both from the previous month's level and from three months before. Compared to October 2016, the not seasonally adjusted unemployment rate decreased by 2.2 p.p., continuing the series of year-on-year reductions started in August 2013.

The unemployment rate monthly stability was followed by a practically null change of the unemployed population and by the increase of the employed population (0.1%; 6.8 thousand). On the other hand, the stability from July 2017 came from the decrease of both the unemployed population (0.5%; 2.1 thousand) and the employed population (0.2%; 9.6 thousand). In

turn, for the year-on-year reduction contributed the unemployed population decline (20.0%; 109.9 thousand) and the employed population growth (3.2%; 145.7 thousand).

In November 2017, the provisional estimate for the not seasonally adjusted unemployment rate was 8.3%, having decreased by 0.2 p.p. from the previous month and by 0.3 p.p. from three months before. On the other hand, from November 2016 that rate decreased by 2.3 p.p..

The monthly reduction recorded in the unemployment rate was followed by the decrease of the unemployed population (2.5%; 11.0 thousand) and by the increase of the employed population (0.1%; 5.6 thousand). Similarly, the decrease recorded from August 2017 was followed by reduction of the unemployed population (3.5%; 15.4 thousand) and by the slight increase of the employed population (1.6 thousand, which corresponds to a nearly null change). Regarding the year-on-year decrease, both the decline of the unemployed population (21.1%; 114.6 thousand) and the growth of the employed population (3.5%; 160.4 thousand) gave their contribution.

Figure 7: Total and youth unemployment rate
(seasonally adjusted data; %)

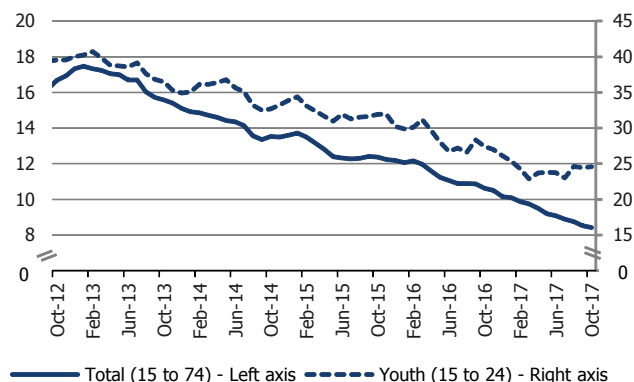


Figure 6: Employed and unemployed population
(seasonally adjusted data; thousands)

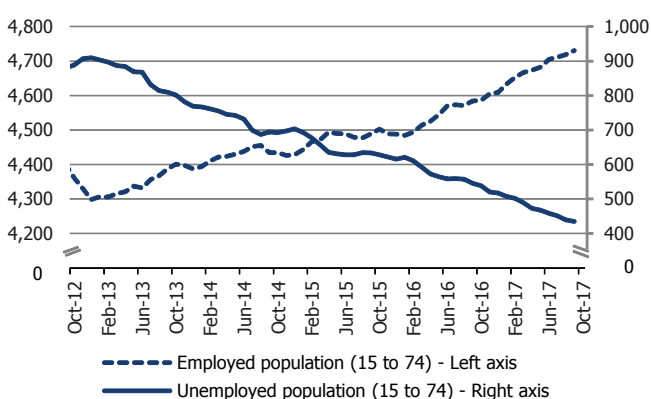


Table 1: Employed population and employment rate by sex and age group (15 to 74)

	Seasonally adjusted data					Not seasonally adjusted data				
	Nov 2016	Aug 2017	Sep 2017	Oct 2017	Nov 2017 (p)	Nov 2016	Aug 2017	Sep 2017	Oct 2017	Nov 2017 (p)
	Thousands									
Employed population (15 to 74)	4,586.0	4,711.8	4,718.6	4,730.7	4,745.1	4,577.9	4,736.7	4,725.9	4,732.7	4,738.3
Men (15 to 74)	2,334.8	2,406.2	2,415.1	2,423.3	2,424.8	2,332.8	2,425.7	2,426.6	2,429.2	2,422.9
Women (15 to 74)	2,251.2	2,305.6	2,303.5	2,307.4	2,320.3	2,245.0	2,311.0	2,299.3	2,303.5	2,315.4
Youth (aged 15 to 24)	267.1	283.0	284.0	285.4	288.9	265.0	291.2	286.4	284.4	288.3
Adults (aged 25 to 74)	4,318.9	4,428.8	4,434.6	4,445.3	4,456.1	4,312.9	4,445.5	4,439.5	4,448.3	4,450.0
	%									
Employment rate (15 to 74)	58.8	60.5	60.6	60.8	61.0	58.7	60.8	60.7	60.8	60.9
Men (15 to 74)	62.6	64.6	64.9	65.1	65.2	62.6	65.1	65.2	65.3	65.1
Women (15 to 74)	55.4	56.7	56.7	56.8	57.1	55.2	56.9	56.6	56.7	57.0
Youth (aged 15 to 24)	24.4	25.9	26.0	26.2	26.5	24.2	26.7	26.3	26.1	26.4
Adults (aged 25 to 74)	64.5	66.2	66.3	66.4	66.6	64.4	66.4	66.3	66.5	66.5

Source: Statistics Portugal, Labour Force Survey.

Note: (p) - Provisional estimates.

Table 2: Unemployed population and unemployment rate by sex and age group (15 to 74)

	Seasonally adjusted data					Not seasonally adjusted data				
	Nov 2016	Aug 2017	Sep 2017	Oct 2017	Nov 2017 (p)	Nov 2016	Aug 2017	Sep 2017	Oct 2017	Nov 2017 (p)
	Thousands									
Unemployed population (15 to 74)	538.2	451.5	439.6	435.0	424.2	543.2	444.0	439.9	439.6	428.6
Men (15 to 74)	273.1	212.0	207.6	206.9	206.3	275.7	207.2	204.9	207.1	208.4
Women (15 to 74)	265.1	239.5	232.0	228.0	217.9	267.4	236.8	235.0	232.5	220.2
Youth (aged 15 to 24)	98.7	92.4	91.9	92.9	89.7	101.8	93.2	96.1	97.8	92.5
Adults (aged 25 to 74)	439.5	359.2	347.7	342.0	334.5	441.4	350.8	343.8	341.8	336.1
	%									
Unemployment rate (15 to 74)	10.5	8.7	8.5	8.4	8.2	10.6	8.6	8.5	8.5	8.3
Men (15 to 74)	10.5	8.1	7.9	7.9	7.8	10.6	7.9	7.8	7.9	7.9
Women (15 to 74)	10.5	9.4	9.1	9.0	8.6	10.6	9.3	9.3	9.2	8.7
Youth (aged 15 to 24)	27.0	24.6	24.5	24.6	23.7	27.7	24.2	25.1	25.6	24.3
Adults (aged 25 to 74)	9.2	7.5	7.3	7.1	7.0	9.3	7.3	7.2	7.1	7.0

Source: Statistics Portugal, Labour Force Survey.

Notes: (p) - Provisional estimates.

TECHNICAL NOTE

Labour Force Survey

The main purpose of the Labour Force Survey is to characterise the population in terms of the labour market. It is a quarterly sample survey, addressed to families occupying the same dwelling in the national territory, which makes available quarterly and annual data.

Most of the characteristics observed in this survey report to the situation in one pre-defined week (from Monday to Sunday), known as reference week. The reference weeks are uniformly distributed throughout the quarters and years. The interviews usually take place in the week following the reference week.

The information is obtained directly, through computer-assisted interview, by using a mixed data collection mode: the initial interview is done face-to-face by an interviewer visiting the household and the other five interviews are done by telephone, if certain requirements are met.

Published data were calibrated by using the population estimates calculated from the final results of Census 2011.

Monthly Employment and Unemployment Estimates

In 2014, Statistics Portugal initiated a monthly release of Labour Force Survey estimates for the main labour market indicators in addition to the usual quarterly estimates releases.

With this initiative, Statistics Portugal intends to provide to users monthly updated information on labour market recent developments, allowing, at the same time, a more complete reading picture than that provided so far by Eurostat in its monthly releases of the unemployed population and unemployment rate estimates for Portugal. With this dissemination, Statistics Portugal satisfies also a specific requirement from the PEEIs (Principal European Economic Indicators).

Taking advantage of the continuous nature of the Labour Force Survey collection process, it is possible to monthly obtain estimates related to successive sets of three months (moving quarters), assuring consistency with the quarterly released estimates.

The monthly estimates refer to *centred* moving quarters, where the reference month (m) corresponds to the central month of each moving quarter. In fact, the reference month of each Press Release corresponds to the central month of the quarter composed by $m-1$, m and $m+1$ months. As a consequence, the monthly changes are calculated on values that contain common months. Therefore, the comparison of moving quarters without common months should be done in relation to reference months three months earlier.

The option for disseminating centred moving quarters series aimed at avoiding delays in the detection of turning points in the economic cycle that arise from the use of simple moving averages, but it implies that the estimates for the latest released moving quarter are provisional (see "Revisions" section below).

As estimates of centred moving quarters, the values (not seasonally adjusted) of the reference months February, May, August and November of each year correspond to the estimates of the 1st, 2nd, 3rd and 4th natural quarters, respectively, whose results are published and analyzed with greater detail in the quarterly releases of the Labour Force Survey estimates.

The estimates for the last reference month are always provisional, as they correspond to a moving quarter where for the third month the data collection is not completed yet. In fact, for the first two months ($m-1$ and m) the data collection from the Labour Force Survey is already completed, while for the third month ($m+1$) only partially collected data are available.

In this context, in each monthly Press Release the provisional estimates for the reference month and the definitive estimates for the previous months are published.

(to be continued)

(continuation)

Information available

The data series selected for monthly releases refer to both employed and unemployed population, by sex and age group, and to the corresponding rates. In relation to these data series, it should be noted the following:

- For the purpose of creating long monthly data series needed for subsequent adjustment of seasonality, the two latest data series of the Labour Force Survey (from 1998 to 2010; from 2011 onwards) were previously linked.
- Unless otherwise stated, the data series analyzed in this Press Release are seasonally adjusted. For this reason, the analysis focuses on the comparison with the most recent periods. As agreed, Eurostat started using these estimates in its unemployment monthly releases. The original data series (not seasonally adjusted; as in the Statistics Portugal quarterly releases), are available in Tables 1 and 2 of the annex and at the Statistics Portugal Portal (www.ine.pt).
- The indicators analyzed in this Press Release were calculated for the age subgroup of those aged 15 to 74 (as in the Eurostat News Release), which differs from the criterion adopted at the Statistics Portugal quarterly releases (people aged 15 and over, in line with the concepts in force of the International Labour Organization).

The back series for all the released and analyzed indicators in this Press Release, since February 1998 (quarter from January to March 1998), are available at the Statistics Portugal Portal.

Due to rounding, totals may not correspond exactly to the sum of the parts.

Revisions

The monthly released data are subject to revisions, as previously mentioned. The revisions come from obtaining the definitive estimates for the previous month (moving quarter) due to the conclusion of its last month collection process. In addition, the revisions also come from the updating of the seasonally adjusted data series whenever a new observation is added. Therefore, in each Press Release the definitive estimates for the previous reference month are published.

The impact of those revisions, measured by the difference between the estimates now released for October 2017 (definitive estimates) and the ones for that month published in the last Press Release, is the following:

Revision of October 2017 estimates - main indicators			
	Unit	Seasonally adjusted data	Not seasonally adjusted data
Employed population (15 to 74)	Thousands	19.5	19.9
Unemployed population (15 to 74)		- 1.9	- 1.9
Employment rate (15 to 74)		0.3	0.2
Unemployment rate (15 to 74)		- 0.1	- 0.1
Men's unemployment rate (15 to 74)	p.p.	0.0	0.0
Women's unemployment rate (15 to 74)		- 0.1	0.0
Youth unemployment rate (15 to 24)		- 1.0	- 1.0
Adults' unemployment rate (25 to 74)		0.0	0.0

In October 2017, the downwards revision of the seasonally adjusted unemployment rate (-0.1 p.p.) was reflected only on the youth unemployment rate (-1.0 p.p.) as well as on that of women (-0.1 p.p.). The downwards revision of the unemployment rate was followed by the downwards revision of the unemployed population (-1.9 thousand; -0.4%) and by the upwards revision of the employed population (+19.5 thousand; +0.4%). In the unemployed population, the highest downwards revisions occurred for young people (-3.7%) and women (-0.5%). In the employed population the major upwards revisions were observed for adults (+0.3%) and women (+0.6%).

(to be continued)

(continuation)

Some concepts

Unemployed: person aged 15 and 74 who, during the reference period, was simultaneously in the following situations:

- without work, i.e. was not in paid employment or self-employment;
- seeking work, i.e. had taken specific steps in a specified recent period (reference period or the three previous weeks) to seek paid employment or self-employment; and
- currently available for work, i.e. was available for paid employment or self-employment during the reference period.

Employed: person aged 15 and over who, during the reference period, was in one of the following situations:

- did any work for pay or profit for at least one hour, including a familiar gain in money or gender;
- was not working but had jobs from which was temporarily absent;
- had a business, but was temporarily not working for a specific reason;
- was in a pre-retirement situation while working.

Unemployment rate: ratio between the unemployed population and the labour force.

U.R. (%) = (Unemployed population / Labour force) x 100

Employment rate (15 and over): ratio between the employed population and the working age total population (15 and over).

E.R. (%) = (Employed population / Total population 15 and over) x 100

For the indicators selected for monthly dissemination, it was considered the age subgroup of those aged 15 to 74.

For a more detailed definition of the concepts and methodological features of this statistical operation, consult the [Labour Force Survey](#) or the [Monthly Employment and Unemployment Estimates](#) methodological documents (both only in Portuguese) available at the Statistics Portugal website.

Next Press Release:

30 January 2018: "Monthly Employment and Unemployment Statistics – December 2017".

31 January 2018: Eurostat News Release.